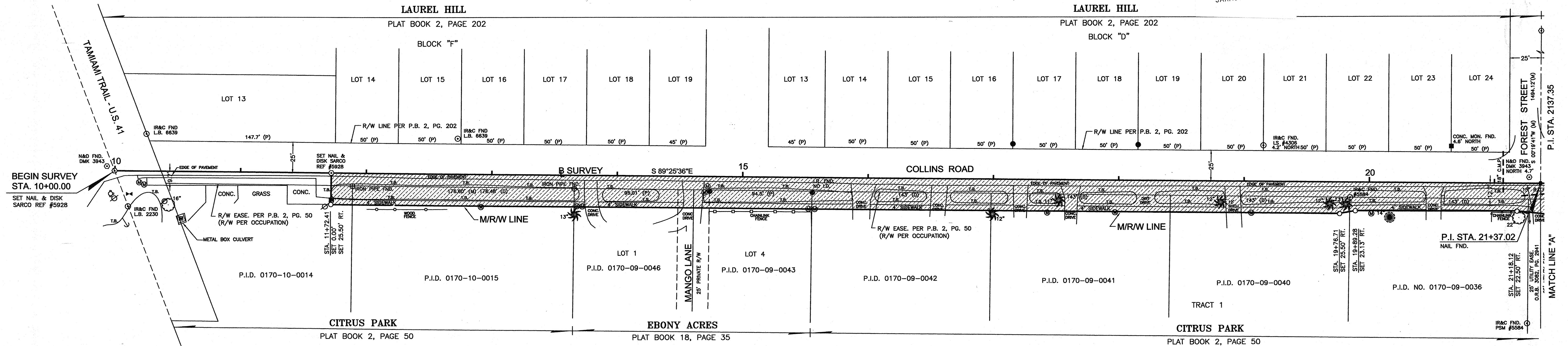


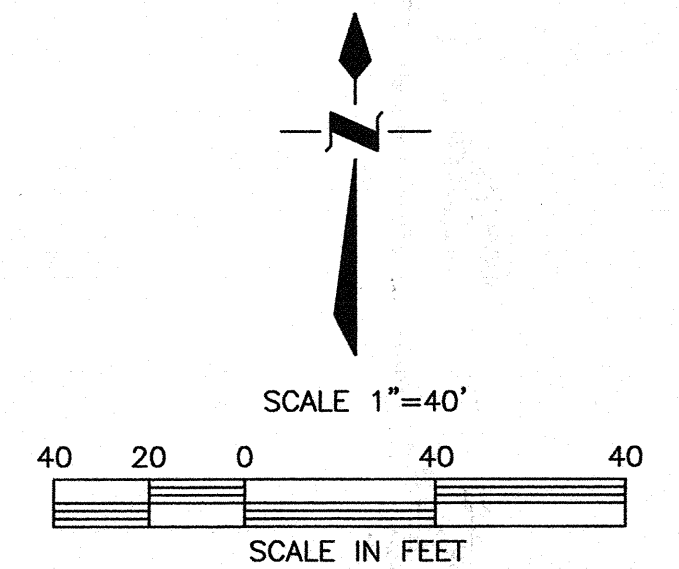
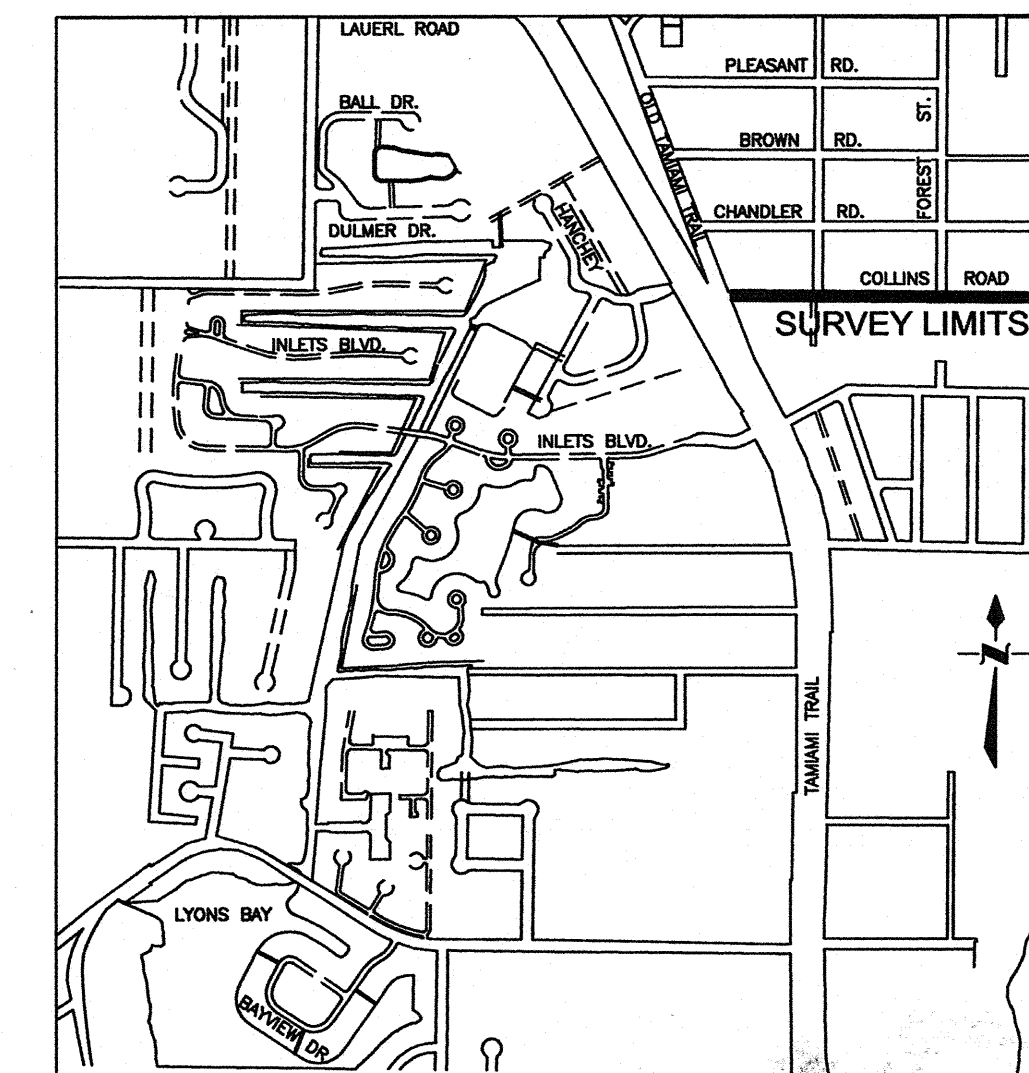
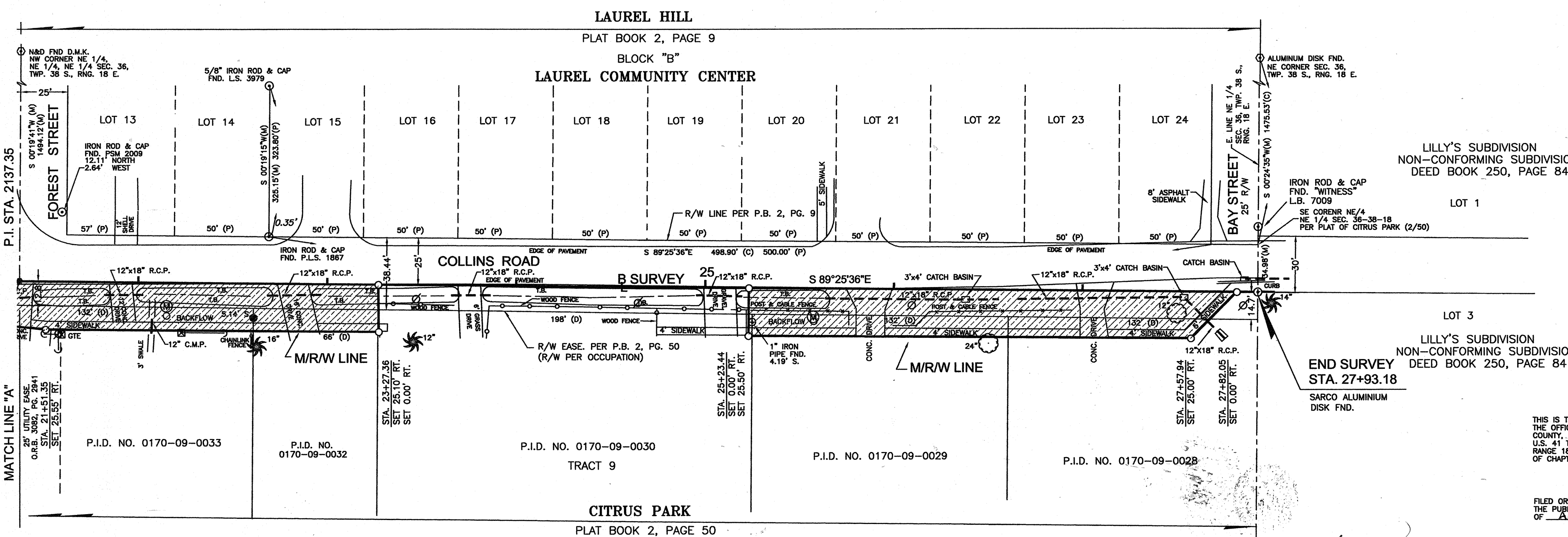
SECTION 36, TOWNSHIP 38 SOUTH, RANGE 18 EAST

FILED FOR RECORD
2008 APR 18 PM 4:45
KAREN E. RUSHING
CLERK OF CIRCUIT COURT
SARASOTA COUNTY, FL



SECTION 36, TOWNSHIP 38 SOUTH, RANGE 18 EAST

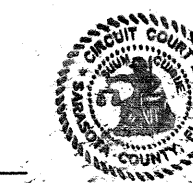
SECTION 36, TOWNSHIP 38 SOUTH, RANGE 18 EAST



SECTION 36, TOWNSHIP 38 SOUTH, RANGE 18 EAST

LI KURNAT, MANAGER
REAL PROPERTY

KAREN E. RUSHING
CLERK OF THE CIRCUIT COURT
SARASOTA COUNTY, FLORIDA



SURVEYOR'S NOTES
1. BEARINGS SHOWN HEREON ARE BASED ON ASSUMED DATUM, THE CENTERLINE OF COLLINS ROAD BEING S 89°25'36"E.
2. THIS MAP WAS PREPARED WITHOUT THE BENEFIT OF AN ABSTRACT OF TITLE OR AN ATTORNEY'S OPINION OF TITLE. THEREOF, ANY DEED OVERLAP OR HATUS OR ANY RECORDED OR UNRECORDED RIGHTS-OF-WAY AND OR EASEMENTS MAY NOT BE SHOWN.
3. ANY REPRODUCTION OF THIS MAP SHALL NOT BE "CERTIFIED A TRUE COPY" WITHOUT MY SIGNATURE AND DATE THEREOF IN INK, TOGETHER WITH MY EMBOSSED SEAL ON SAID COPY.
4. IMPROVEMENTS SUCH AS, BUT NOT LIMITED TO, UNDERGROUND UTILITIES, LANDSCAPE FEATURES, ECT., HAVE NOT BEEN LOCATED EXCEPT AS SHOWN.
5. A CHANGE OR JOG ON THE MAINTAINED RIGHT-OF-WAY LINE IS NOT NECESSARILY LOCATED AT AN INTERSECTING PROPERTY LINE.

M/R/W MARKERS SET: 12-05-07

SARASOTA COUNTY SURVEY-MAPPING
PLANNING & DEVELOPMENT SERVICES BUSINESS CENTER
1301 CATTLEMEN ROAD BLDG. "E" SARASOTA, FLORIDA 34232
941/861-6802 • 941/861-6865 • FAX 941/861-6157

TERI S. OWEN, Professional Surveyor and Mapper No. 5928
1-8-08

Table with columns for ABBREVIATION and LEGEND, listing symbols for various survey markers and features.

Table with columns for SYMBOL and LEGEND, listing symbols for various survey markers and features.

Table with columns for PROJ. NO., DWG DATE, FIELD DATE, DRAWN BY, and CHECKED BY, containing project and drawing information.

B.C.C. RESO. NO. 2008-062 O.R.I. 2008.047799