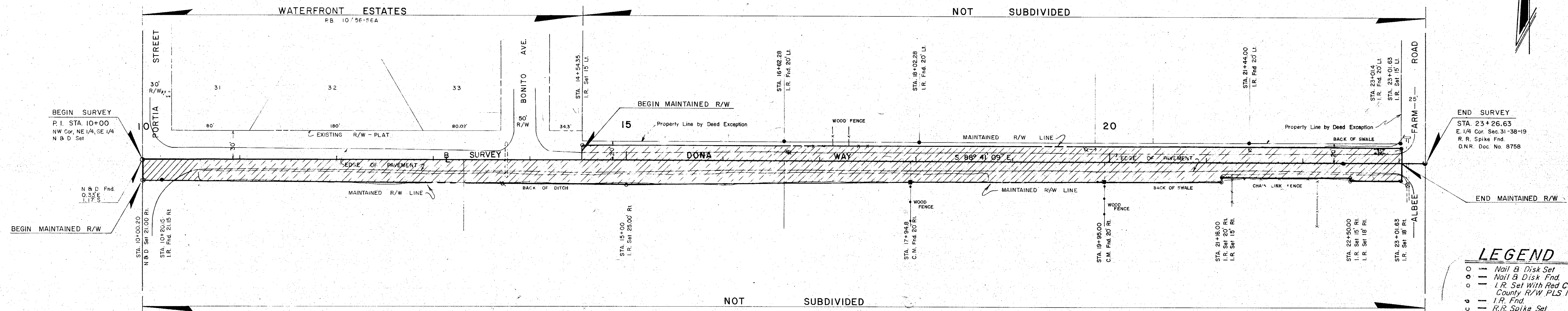
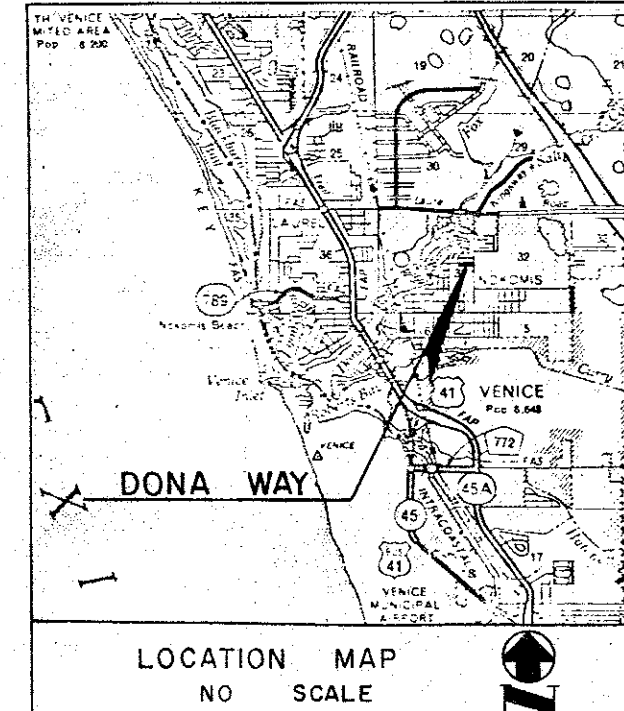


N 1/2, SEC. 31, TWP 38S, RGE. 19E



S 1/2, SEC. 31, TWP 38S, RGE. 19E



- LEGEND**
- — Nail & Disk Set
 - — Nail & Disk Fnd.
 - — I.R. Set With Red Cap Stamped County R/W PLS 1867
 - — I.R. Fnd.
 - — R.R. Spike Set
 - — R.R. Spike Fnd.
 - △ — 1" x 2" Hub Set
 - △ — 1" x 2" Hub Fnd.
 - — Conc. Mon. Set
 - — Conc. Mon. Fnd.
 - — Water Valve
 - — Utility Pole
 - — G.T. & TV. Cable Box
 - — G.T. Manhole
 - — Light Pole
 - — Fire Hydrant
 - — Guy Wire

SURVEYOR'S CERTIFICATE

I HEREBY CERTIFY THAT THIS MAINTAINED R/W MAP REPRESENTS A BOUNDARY SURVEY OF THE ROAD AS SHOWN, THAT THE SURVEY WAS RECENTLY PERFORMED UNDER MY DIRECTION, AND THAT IT IS TRUE AND CORRECT TO THE BEST OF MY KNOWLEDGE AND BELIEF, AND THAT IT MEETS THE MINIMUM TECHNICAL STANDARDS FOR LAND SURVEYING IN THE STATE OF FLORIDA (CH. 21 HH-6, F.A.C.) EFFECTIVE SEPT. 1, 1981.

DATE OF SURVEY: 8-6-86

E. Emerson
E. R. EMERSON, COUNTY SURVEYOR
PROFESSIONAL LAND SURVEYOR NO. 1867
STATE OF FLORIDA
1301 CATTLEMEN ROAD
SARASOTA, FLORIDA 33592

August 14, 1986
DATE

THIS IS TO CERTIFY THAT THE NUMBERED SHEET ONE (1) OF ONE (1) CONSTITUTE THE OFFICIAL MAINTENANCE MAP SHOWING THE LOCATION AND SURVEY BY THE SARASOTA COUNTY, FLORIDA, TRANSPORTATION DEPARTMENT FOR DONA WAY LYING BETWEEN PORTIA STREET AND ALBEE FARM ROAD IN SECTION 31, TOWNSHIP 38S, RANGE 19E, SARASOTA COUNTY, FLORIDA. THE PROPERTY SHOWN CROSS-HATCHED ON THIS MAP HAS BEEN VESTED IN SARASOTA COUNTY, FLORIDA, PURSUANT TO THE PROVISIONS OF CHAPTER 95.361, FLORIDA STATUTES OF 1985.

ACCEPTED FOR FILES AND RECORDED IN THE PUBLIC RECORDS OF SARASOTA COUNTY, FLORIDA THIS 26th DAY OF AUGUST A.D. 1986, IN ROAD PLAT BOOK 3 PAGE 12.

Kam F. P. ...
CLERK OF THE CIRCUIT COURT
SARASOTA COUNTY, FLORIDA

THIS IS TO CERTIFY THAT THIS MAINTENANCE MAP WAS APPROVED BY RESOLUTION NO. 88-390 PASSED AND ADOPTED BY THE BOARD OF COUNTY COMMISSIONERS OF SARASOTA COUNTY, FLORIDA, ON THE 26th DAY OF AUGUST A.D. 1986.

BOARD OF COUNTY COMMISSIONERS OF SARASOTA COUNTY, FLORIDA BY:

Mary Carlson
VICE CHAIRMAN

ATTEST:
R.H. HACKNEY JR. CLERK OF THE CIRCUIT COURT AND EX-OFFICIO CLERK OF THE BOARD OF COUNTY COMMISSIONERS OF SARASOTA COUNTY, FLORIDA BY:

Virginia R. Bartolo
DEPUTY CLERK

THIS IS TO CERTIFY THAT THE LIMITS OF THE ROADWAY OUTSIDE OF PLATTED RIGHT-OF-WAY AS SHOWN CROSS-HATCHED HEREON, HAS BEEN MAINTAINED CONTINUOUSLY FOR OVER FOUR (4) YEARS WITHOUT INTERRUPTION.

Richard J. Christman
SUPERINTENDENT
ROAD & BRIDGE DIVISION
DATE 7-30-86

SURVEYOR'S NOTES

BEARINGS ARE BASED ON WATERFRONT ESTATES, PLAT BOOK 10, PAGES 56-56A, THE SOUTH LINE THEREOF BEING S88°41'09"E.

SARASOTA COUNTY TRANSPORTATION DEPARTMENT			
ENGINEERING DIVISION, CADASTRAL SECTION			
MAINTAINED RIGHT OF WAY MAP			
DONA WAY PORTIA STREET TO ALBEE FARM ROAD			
DRAWN	BY	DATE	
W.F.W.		6-16-86	
CHECKED	BY	DATE	
P.B.S.		7-18-86	
COMPARED	BY	DATE	
K.C.W.		8-7-86	
REF	F.B. 285 Pg 62-64		
SCALE	PROJECT NO.	SHEET 1 OF 1	
1" = 50'	84033		