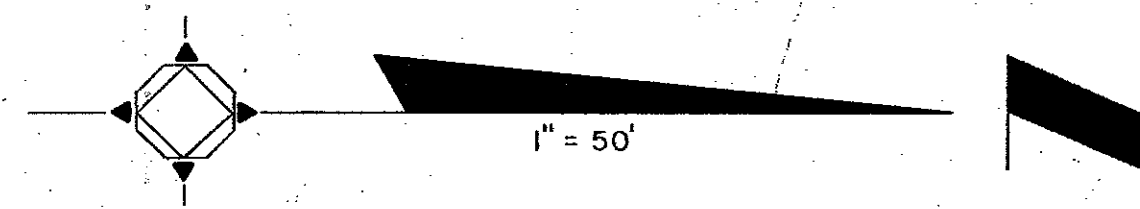


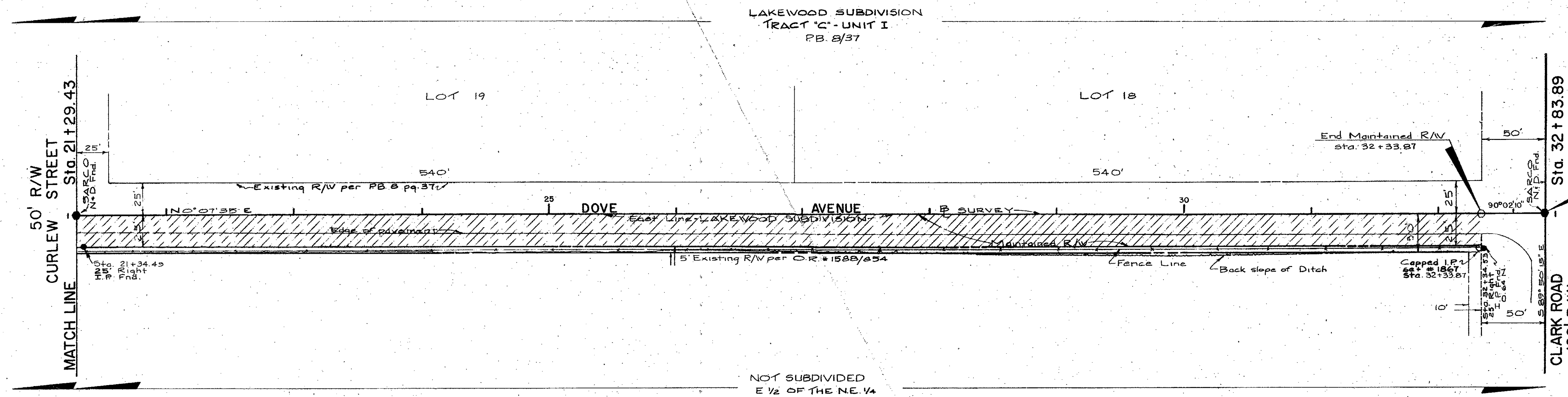
NOT SUBDIVIDED  
E 1/2 OF THE NE 1/4



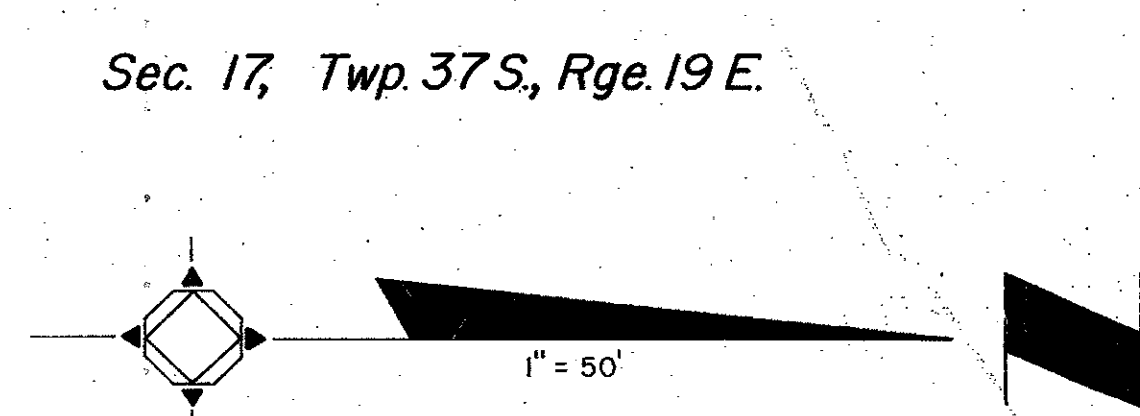
**SURVEYOR'S NOTES**

(1) BEARINGS BASED ON PLAT OF LAKEWOOD SUBDIVISION, P.B. 8, PG. 37, PUBLIC RECORDS OF SARASOTA COUNTY, FLORIDA, W. LINE OF SUBDIVISION BEING N00°07'35"E

(2) LOCATION OF FENCE LINE AND TOP OF BANK NOT DIMENSIONED, FENCE LINE AND TOP OF BANK FALL WITHIN THE 5' R/W PER O.R. 1588, PG. 854.



NOT SUBDIVIDED  
E 1/2 OF THE NE 1/4



**LEGEND**

- = Nail & Disk Set # 1867
- = Nail & Disk Fnd.
- = I.P. Set # 1867
- = I.P. Fnd.
- ⊗ = Telephone Pole

THIS IS TO CERTIFY THAT THIS MAP CONSTITUTES THE OFFICIAL MAINTENANCE MAP SHOWING LOCATION AND SURVEY BY SARASOTA COUNTY, FLORIDA TRANSPORTATION DEPARTMENT FOR THAT PORTION OF DOVE AVENUE BETWEEN HAWKINS ROAD AND CLARK ROAD (SR 72) ALL LYING IN SECTION 17, TOWNSHIP 37 SOUTH, RANGE 19 EAST, SARASOTA COUNTY, FLORIDA. THE PROPERTY SHOWN CROSS-HATCHED ON SAID MAP HAS BEEN VESTED IN SARASOTA COUNTY, FLORIDA PURSUANT TO THE PROVISIONS OF CHAPTER 95.361, FLORIDA STATUTES OF 1983.

THIS IS TO CERTIFY THAT THIS MAINTENANCE MAP WAS APPROVED BY RESOLUTION PASSED AND ADOPTED BY THE BOARD OF COUNTY COMMISSIONERS OF SARASOTA COUNTY, FLORIDA THE 2nd DAY OF July, A.D. 1985.

*James McSherry*  
BOARD OF COUNTY COMMISSIONERS (CHAIRMAN)  
SARASOTA COUNTY, FLORIDA

ATTEST:  
R.H. HACKNEY JR. CLERK OF CIRCUIT COURT  
AND EX-OFFICIO CLERK OF THE BOARD OF COUNTY COMMISSIONERS OF SARASOTA COUNTY, FLORIDA

BY: *Paul K. ...*  
DEPUTY CLERK

Sec. 17, Twp. 37 S., Rge. 19 E.

THIS IS TO CERTIFY THAT THE LIMITS OF THE ROADWAY OUTSIDE OF THE PLATTED RIGHT-OF-WAY AS SHOWN CROSS-HATCHED HEREON, HAS BEEN MAINTAINED CONTINUOUSLY FOR OVER FOUR YEARS WITHOUT INTERRUPTION.

*Paul K. ...* 6/21/85  
SUPERINTENDENT  
ROAD & BRIDGE DIVISION

**SURVEYOR'S CERTIFICATE**

I HEREBY CERTIFY THAT THIS MAINTAINED R/W MAP REPRESENTS A BOUNDARY SURVEY OF THE ROADWAY AS SHOWN, THAT THE SURVEY WAS RECENTLY PERFORMED UNDER MY DIRECTION AND THAT IT IS TRUE AND CORRECT TO THE BEST OF MY KNOWLEDGE AND BELIEF, AND THAT IT MEETS THE MINIMUM TECHNICAL STANDARDS FOR LAND SURVEYING IN THE STATE OF FLORIDA (CH 21 HH-6 FAC) EFFECTIVE SEPT. 1, 1981.

DATE OF SURVEY: 6-10-85

*ER Emerson* 6-20-85  
ER EMERSON, COUNTY SURVEYOR  
PROFESSIONAL LAND SURVEYOR # 1867  
STATE OF FLORIDA  
1301 CATTLEMEN ROAD  
SARASOTA, FLORIDA 33582

SARASOTA COUNTY TRANSPORTATION DEPARTMENT  
ENGINEERING DIVISION, CADASTRAL SECTION

## MAINTAINED R/W MAP

DOVE AVENUE  
HAWKINS ROAD TO CLARK ROAD - SR. 72

BY	DATE	DATE
KLH	5/1/85	<i>ER Emerson</i> 6-20-85
<i>...</i>	6-21-85	<i>...</i> 6-21-85
<i>...</i>	6-21-85	<i>...</i> 6-21-85

SCALE: 1" = 50'

PROJECT NO. 85032 SHEET 1 of 1

ACCEPTED FOR FILES AND RECORDED IN THE PUBLIC RECORDS OF SARASOTA COUNTY, FLORIDA THIS 2nd DAY OF July, A.D. 1985 IN ROAD PLAT BOOK 2 PAGE 60