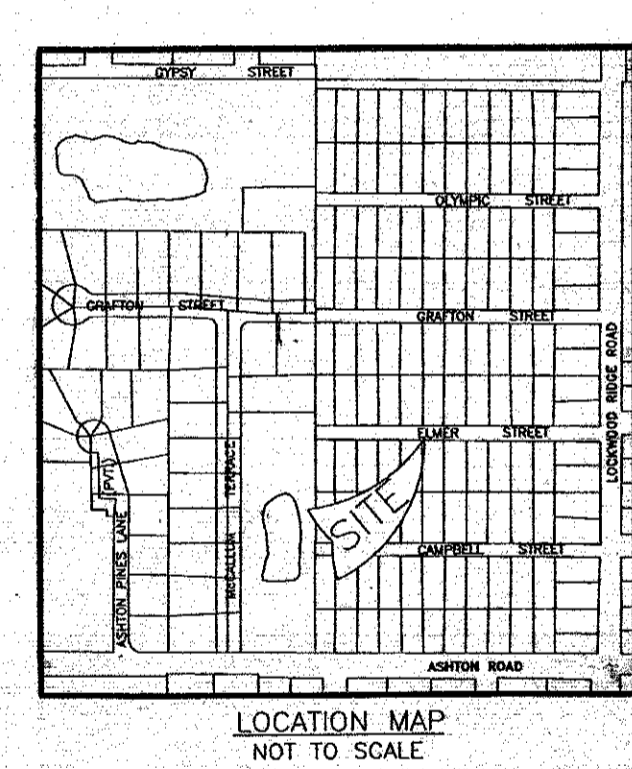
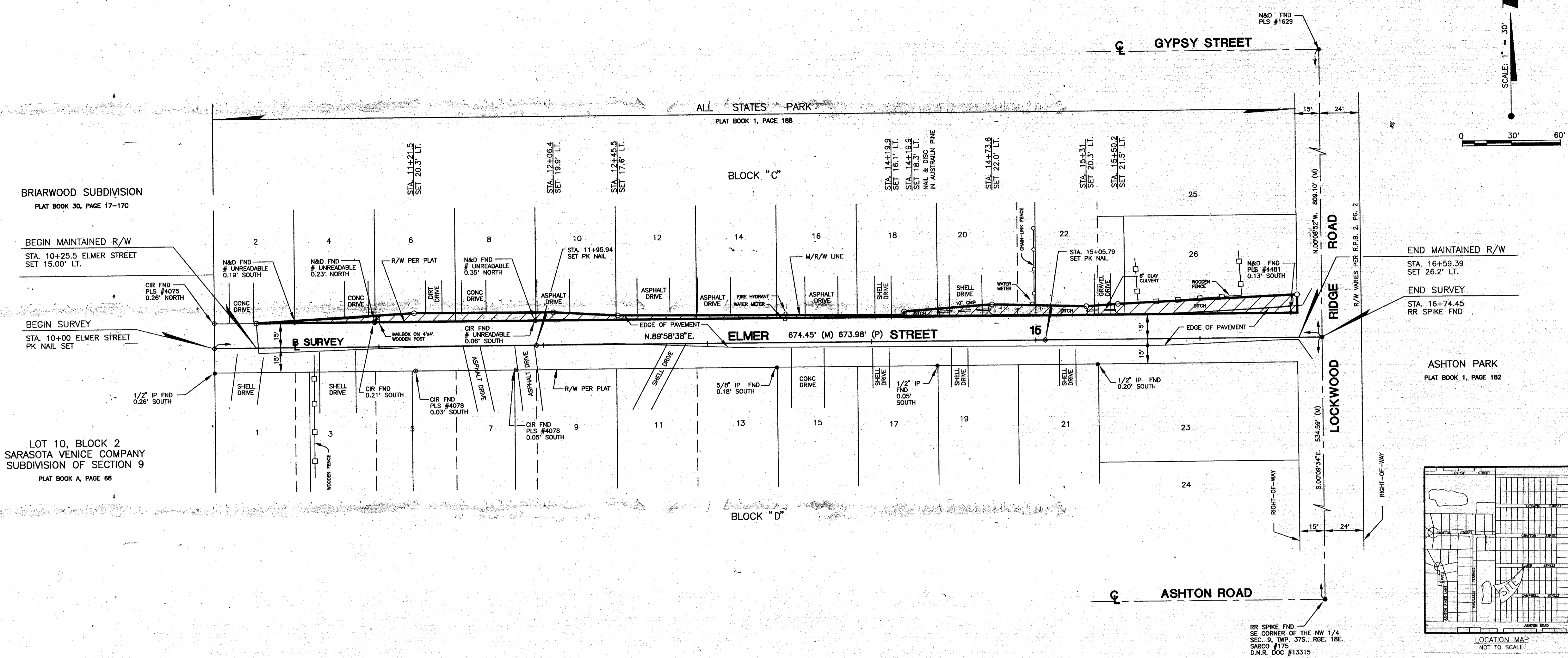


SECTION 9, TOWNSHIP 37 SOUTH, RANGE 18 EAST



FILED FOR RECORD
 27 MAR 11 PM 3:21
 KAREN E. RUSHING
 CLERK OF CIRCUIT COURT
 SARASOTA COUNTY, FL

THIS IS TO CERTIFY THAT THE NUMBERED SHEET ONE (1) OF ONE (1) CONSTITUTES THE OFFICIAL MAINTENANCE MAP SHOWING THE LOCATION AND SURVEY BY THE SARASOTA COUNTY, FLORIDA TRANSPORTATION DEPARTMENT FOR ELMER STREET, BEING IN SECTION 9, TOWNSHIP 37 SOUTH, RANGE 18 EAST, SARASOTA COUNTY, FLORIDA PURSUANT TO THE PROVISIONS OF CHAPTER 95.361, FLORIDA STATUTES OF 1991.

THIS IS TO CERTIFY THAT THIS MAINTAINED MAP WAS APPROVED BY RESOLUTION NO. 95-005 PASSED AND ADOPTED BY THE BOARD OF COUNTY COMMISSIONERS OF SARASOTA COUNTY, FLORIDA ON THE 26th DAY OF JANUARY, A.D. 1995.

[Signature]
 CHAIRMAN

ATTEST:
 KAREN E. RUSHING, CLERK OF THE CIRCUIT COURT AND EX-OFFICIO CLERK OF THE BOARD OF COUNTY COMMISSIONERS OF SARASOTA COUNTY, FLORIDA BY:
[Signature]
 DEPUTY CLERK

THIS IS TO CERTIFY THAT THE LIMITS OF THE ROADWAY OUTSIDE OF PLATTED RIGHT-OF-WAY AS SHOWN CROSS-HATCHED HEREON, HAS BEEN MAINTAINED CONTINUOUSLY FOR OVER FOUR (4) YEARS.

[Signature]
 JOAN FARRIS
 AREA SUPERINTENDENT
 HIGHWAY MAINTENANCE

FILED FOR RECORD IN ROAD PLAT BOOK 4 AT PAGE 8 OF THE PUBLIC RECORDS OF SARASOTA COUNTY, FLORIDA, THIS DAY OF March A.D. 1997.

KAREN E. RUSHING
 CLERK OF CIRCUIT COURT
 SARASOTA COUNTY, FLORIDA
 BY: *[Signature]*
 DEPUTY CLERK

SYMBOL LEGEND

- = CAPPED IRON ROD FND, PLS # AS NOTED
- = IRON PIPE FND
- ◆ = NAIL & DISK FND, PLS # AS NOTED
- = R/R SPIKE FND
- = FOUND
- = PAGE
- = WATER METER BOX
- = MAIL BOX
- = PK NAIL SET
- = RED CAPPED IRON ROD SET STAMPED COUNTY R/W, PLS #4149

ABBREVIATION LEGEND

- R/W = RIGHT-OF-WAY
- R.P.B. = ROAD PLAT BOOK
- P.B. = PLAT BOOK
- FND = FOUND
- PG. = PAGE
- SEC. = SECTION
- TWP. = TOWNSHIP
- RGE. = RANGE
- M = MEASURED
- NO. = NUMBER
- # = NUMBER
- FL = FLORIDA
- B = BASELINE
- F = PLAT
- STA = STATION
- O.R.B. = OFFICIAL RECORDS BOOK
- M/R/W = MAINTAINED RIGHT-OF-WAY
- SARCO = SARASOTA COUNTY
- FAC = FLORIDA ADMINISTRATIVE CODE
- FS = FLORIDA STATUTES
- DOC = DOCUMENT
- D.N.R. = DEPARTMENT OF NATURAL RESOURCES
- P.L.S. = PROFESSIONAL LAND SURVEYOR
- CIR = CAPPED IRON ROD
- IP = IRON PIPE
- R/R SPIKE = RAILROAD SPIKE
- CMP = CORRUGATED METAL PIPE

SURVEYOR'S NOTES

1. BEARINGS SHOWN HEREON ARE BASED ON THE SOUTH RIGHT-OF-WAY LINE OF ELMER STREET, BEARING BEING N.89°58'38"E.
2. A CHANGE OR JOG ON THE MAINTAINED RIGHT-OF-WAY LINE IS NOT NECESSARILY LOCATED AT AN INTERSECTION PROPERTY LINE.
3. IMPROVEMENTS SUCH AS BUT NOT LIMITED TO UNDERGROUND UTILITIES, LANDSCAPE FEATURES, ETC., HAVE NOT BEEN LOCATED EXCEPT AS SHOWN.

SURVEYOR'S CERTIFICATE

I HEREBY CERTIFY THAT THIS R/W MAP (SHEET 1-1) REPRESENTS A SURVEY OF THE ROAD ALIGNMENT AS SHOWN HEREON, THAT THE SURVEY WAS RECENTLY PERFORMED UNDER MY DIRECTION, AND THAT IT IS TRUE AND CORRECT TO THE BEST OF MY KNOWLEDGE AND BELIEF, AND THAT THE SURVEY MEETS THE MINIMUM TECHNICAL STANDARDS AS SET FORTH BY THE FLORIDA BOARD OF PROFESSIONAL LAND SURVEYORS IN CHAPTER 61G17-6, F.A.C. PURSUANT TO SECTION 472.027, F.S.

DATE OF SURVEY: AUGUST 11, 1994
 DATE MONUMENTS SET: OCTOBER 27, 1994

[Signature]
 G.M. FOSNESS, COUNTY SURVEYOR
 PROFESSIONAL LAND SURVEYOR NO. 4149
 STATE OF FLORIDA
 1301 CATTLEMEN ROAD
 SARASOTA, FLORIDA 34232-9631

SARASOTA COUNTY TRANSPORTATION DEPARTMENT ENGINEERING DIVISION - SURVEY - MAPPING SECTION			
MAINTAINED RIGHT OF WAY MAP			
ELMER STREET LOCKWOOD RIDGE ROAD WEST TO END OF RIGHT-OF-WAY			
BY	DATE		
KLESZ	9-28-94		
CHECKED	WW	10-28-94	
COMPARED	K.C.W.	10-31-94	
REF. FIELD BOOK 353, PG. 78-77, 1/2 SECTION MAP #97, P.B. 1, PG. 188			
SCALE 1" = 30'	PROJECT NO. 0405-94041	SHEET 1 OF 1	

B.C. RESO 94-005 O.R.B. 2715 PG.1526