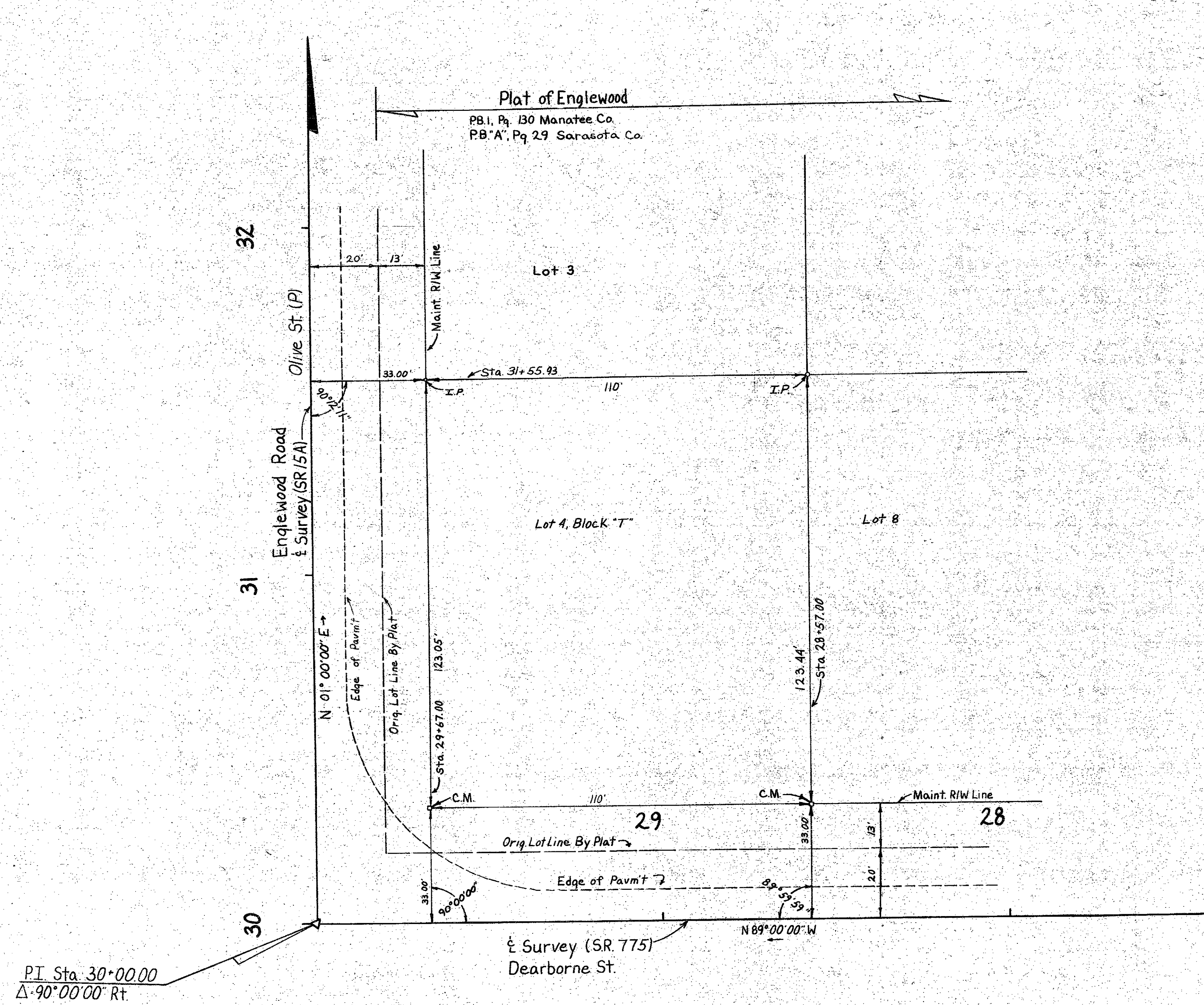


Sec. 25  
T 40S, R 19E



ACCEPTED for files and recorded in the public Records of **Sarasota** County, Florida this **21st** day of **MARCH**, A.D. 19**77**, in Road Plat Book **2** Page **3**.  
Clerk of Circuit Court **Sarasota** County, Florida.

THIS IS TO CERTIFY that the within and attached sheets numbered 1 to 1 inclusive, constitute a true copy of the official RIGHT OF WAY MAP showing Location and Survey by the State of Florida, Department of Transportation for a portion of State Road **175 15A**, designated as Section **17501** in **Sarasota** County, Florida.

THE PROPERTY outlined in RED ink, and labeled MAINT. R/W LINE on the said sheets has been vested in the State of Florida, Department of Transportation, pursuant to the provisions of Section 341.59 Florida Statutes of 1951, Section 337.3 Florida Statutes of 1955 and Section 85.361 Florida Statutes of 1974, and 7 or under formal conveyance and other instruments.

IN WITNESS WHEREOF, We have hereunto set our hands and affixed the seal of the State of Florida, Department of Transportation, at Tallahassee, Florida, this **16th** day of **MARCH**, A.D. 19**77**.

SECRETARY OF TRANSPORTATION  
STATE OF FLORIDA, DEPARTMENT OF TRANSPORTATION

EXECUTIVE SECRETARY  
STATE OF FLORIDA, DEPARTMENT OF TRANSPORTATION

STATE OF FLORIDA DEPARTMENT OF TRANSPORTATION			
<b>MAINTAINED</b>			
<b>RIGHT OF WAY MAP</b>			
STATE ROAD No. <b>175 15A</b> <b>Sarasota</b> COUNTY			
BY	DATE	APPROVED BY	DATE
DRAWN <b>MHD</b>	<b>2-22-77</b>	<i>C.W. Monte DeAlmeida</i> ENGINEER	<b>3-7-77</b>
TRACED <b>TJW</b>	<b>2-25-77</b>		
CHECKED <b>MHD</b>	<b>2-25-77</b>		
COMPARED		<i>J.L. ...</i> ENGINEER OF RIGHT OF WAY	
INDEXED			
SECTION <b>17501</b>			1