

FED. ROAD DIV. No.	STATE	PROJECT No.	FISCAL YEAR	SHEET No.
3	FLA.	17040-2502		1

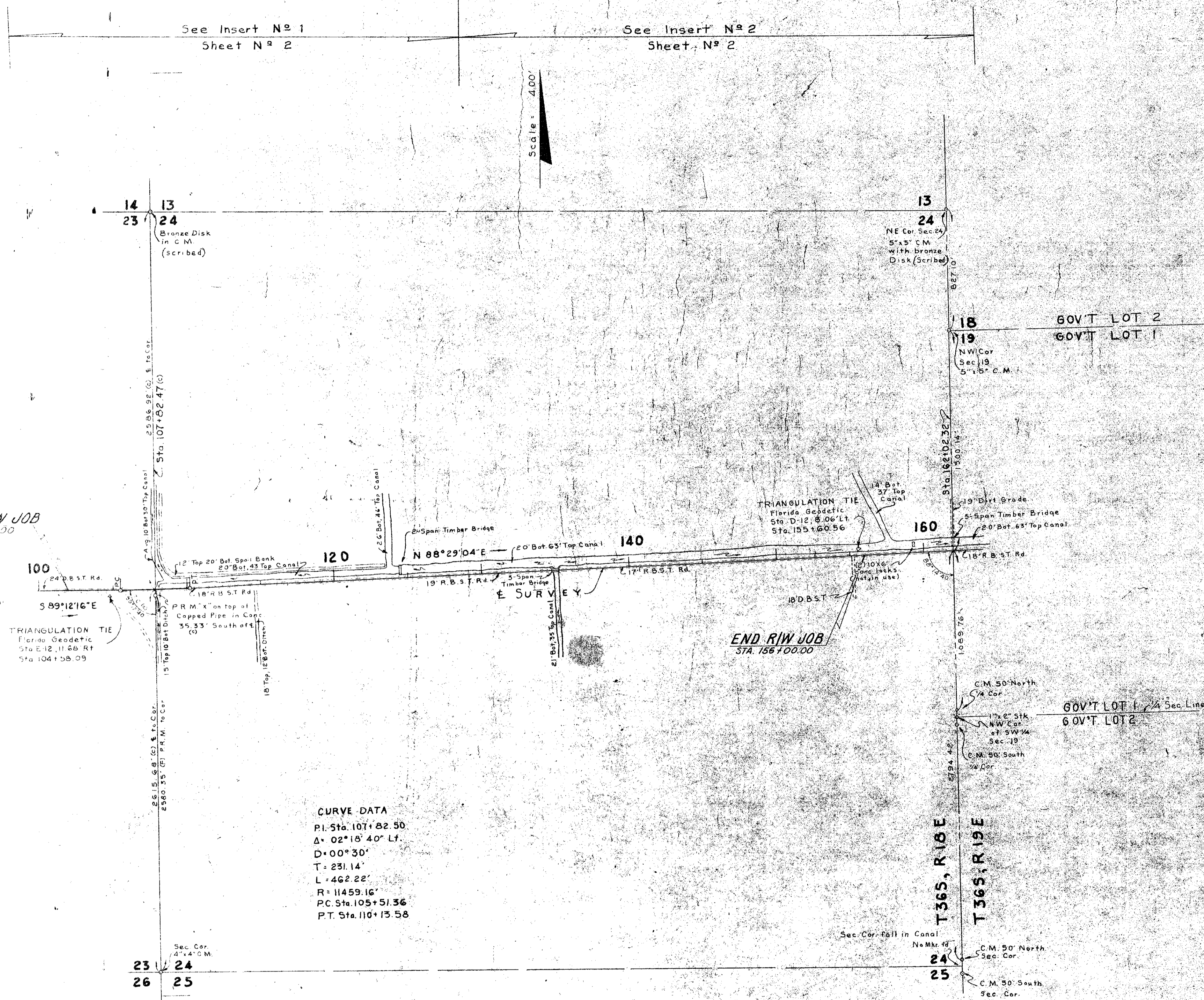
See Insert N^o 1
Sheet N^o 2

See Insert N^o 2
Sheet N^o 2

Scale 400'

BEGIN RIW JOB
STA. 100+00.00

END RIW JOB
STA. 156+00.00



CURVE DATA
 P.I. Sta. 101+82.50
 Δ = 02° 16' 40" Lt.
 D = 00° 30'
 T = 231.14'
 L = 462.22'
 R = 11459.16'
 P.C. Sta. 105+51.36
 P.T. Sta. 110+13.58

NOTE:
 Bearings are based on West Zone Grid
 between Florida Geodetic Survey Sta. D-12
 & E-12 (See Triangulation ties in this
 sheet)

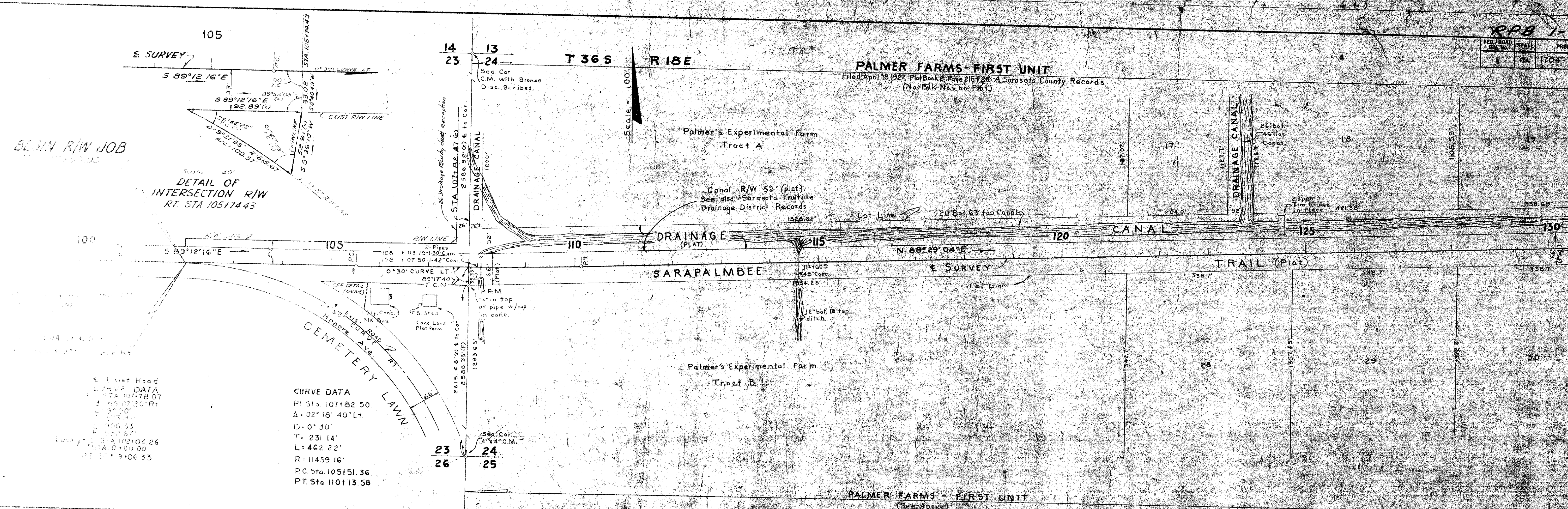
UTILITY OWNERS
 Telephone ----- General Telephone Co.
 Power ----- Florida Power & Light Co.

FRUITVILLE & MYAKKA ROAD
KEY MAP

Topog. plotted from field book N^o 290236
 Land Ties Platted from field book N^o 512714

STATE OF FLORIDA
STATE ROAD DEPARTMENT
RIGHT OF WAY MAP

STATE ROAD NO. S.R. 750		SARASOTA COUNTY	
BY	DATE	APPROVED BY	DATE
DRAWN	R.H.C. 5-11-61	<i>[Signature]</i>	
TRACKED	B.N. 2-29-61	<i>[Signature]</i>	
CHECKED	D.C. 3-6-61	<i>[Signature]</i>	
DESIGNED	W.E.S. 3-15-61	<i>[Signature]</i>	
SECTION	17040-2502	SHEET	1 OF

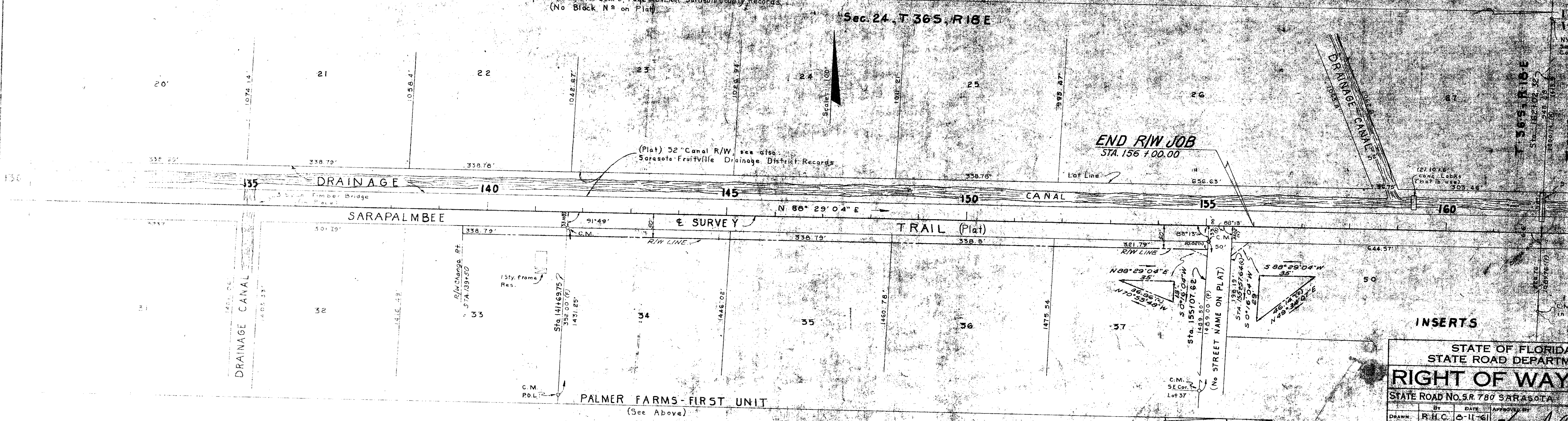


INSERT No 1

PALMER FARMS - FIRST UNIT

Filed April 18, 1927, Plat Book 2, Page 2157, 26 A Sarasota County Records
 (No Block No. on Plat)

Sec. 24, T 36 S, R 18 E



INSERT No 2

STATE OF FLORIDA
 STATE ROAD DEPARTMENT

RIGHT OF WAY MAP

STATE ROAD No. 5R 780 SARASOTA COUNTY

BY	DATE	APPROVED BY	DATE
R.H.C.	8-11-61	<i>[Signature]</i>	
B.L.N.	8-24-61	<i>[Signature]</i>	
D.C.	9-7-61	<i>[Signature]</i>	
WES	10-15-61	<i>[Signature]</i>	

SECTION 17040-2502 SHEET 2 OF 2