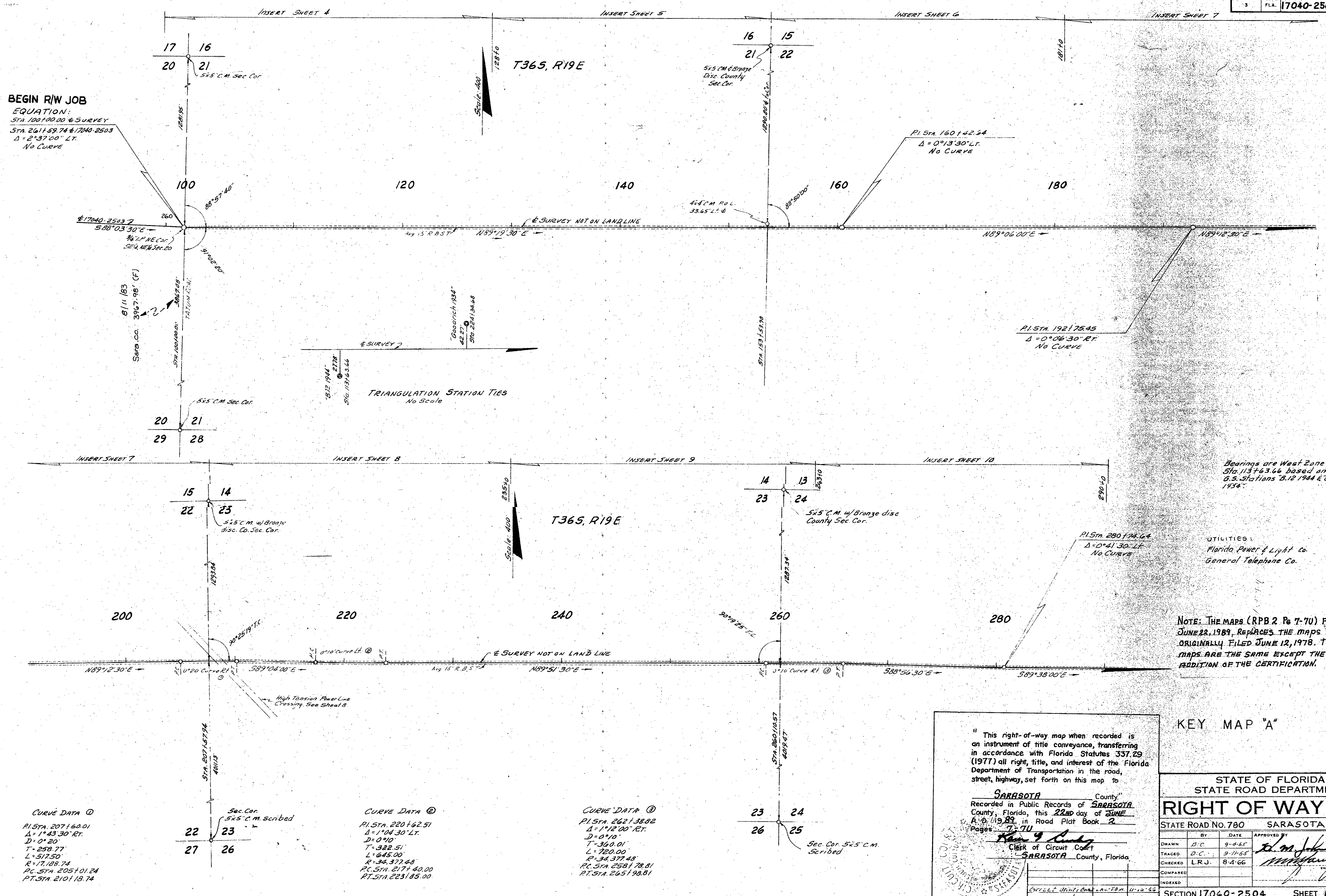


FED. ROAD DIV. NO.	STATE	PROJECT NO.	FISCAL YEAR	SHEET NO.
3	FLA.	17040-2504		1



KEY MAP "A"

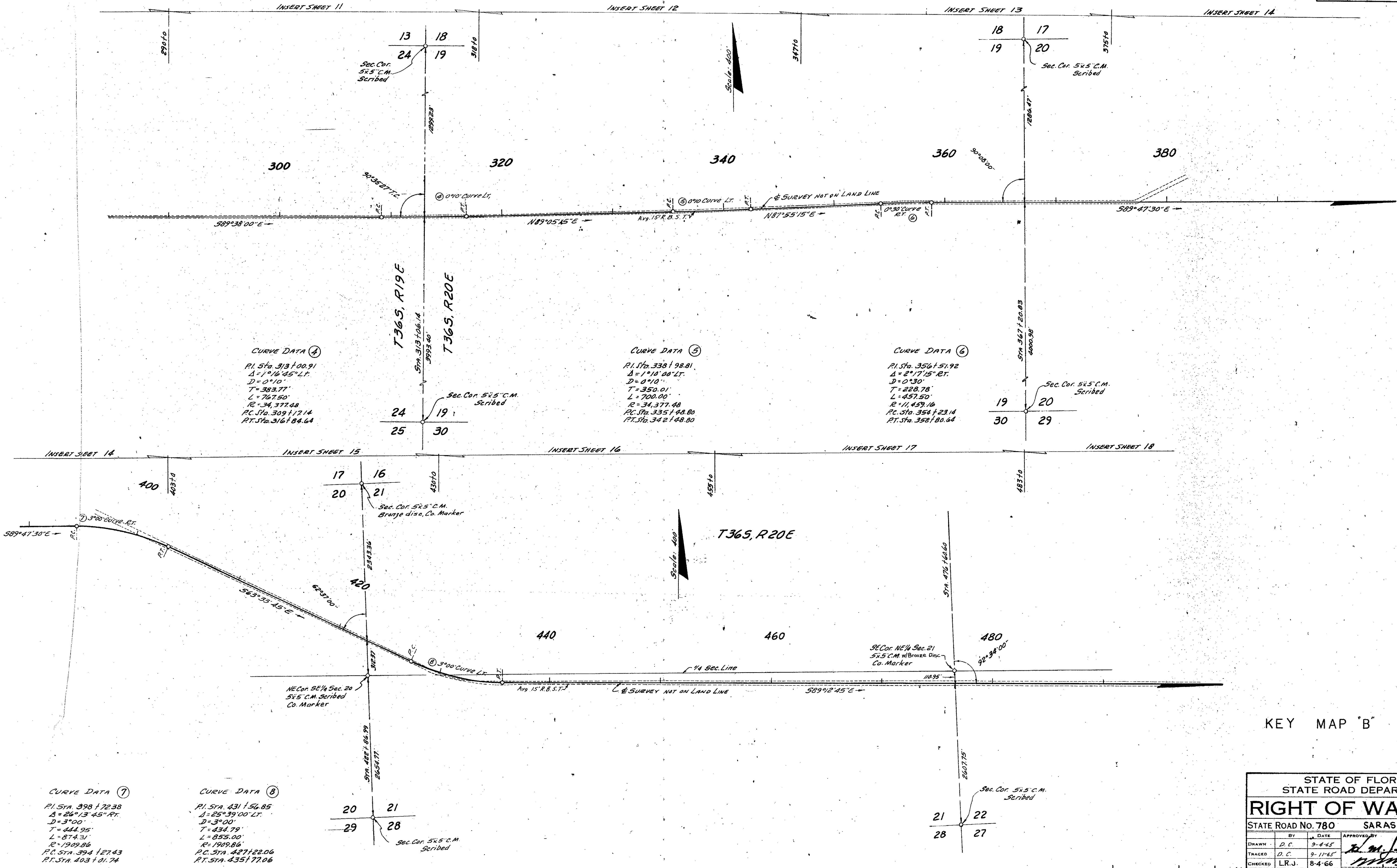
" This right-of-way map when recorded is an instrument of title conveyance, transferring in accordance with Florida Statutes 337.29 (1977) all right, title, and interest of the Florida Department of Transportation in the road, street, highway, set forth on this map to

SARASOTA County
 Recorded in Public Records of **SARASOTA** County, Florida, this **22ND** day of **JUNE** A.D. 19**83**, in Road Plat Book **2**
 Pages **7-70**

[Signature]
 Clerk of Circuit Court
SARASOTA County, Florida.

STATE OF FLORIDA STATE ROAD DEPARTMENT			
RIGHT OF WAY MAP			
STATE ROAD NO. 780		SARASOTA COUNTY	
BY	DATE	APPROVED BY	DATE
DRAWN D.C.	9-8-65	<i>[Signature]</i>	
TRACED D.C.	9-11-65		
CHECKED LRJ	8-4-66		
COMPARED			
INDEXED			
SECTION 17040-2504 SHEET 1 OF 22			

FED. ROAD DIV. NO.	STATE	PROJECT NO.	FISCAL YEAR	SHEET NO.
3	FLA.	17040-2504		2

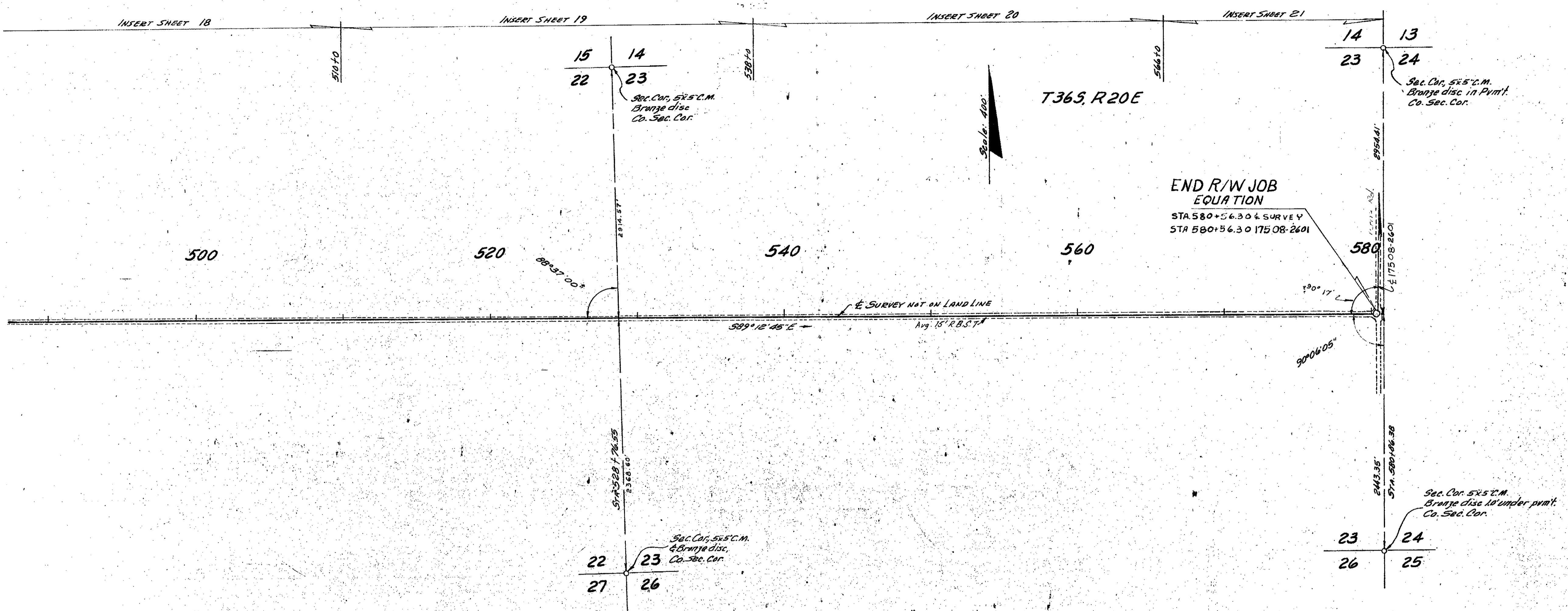


KEY MAP 'B'

STATE OF FLORIDA STATE ROAD DEPARTMENT			
RIGHT OF WAY MAP			
STATE ROAD NO. 780		SARASOTA COUNTY	
DRAWN BY	D.C.	DATE	9-4-65
TRACED BY	D.C.	DATE	9-11-65
CHECKED BY	L.R.J.	DATE	8-4-66
COMPARED BY		DATE	
INDEXED BY		DATE	
APPROVED BY		DATE	
[Signature]			
DISTRICT ENGINEER		STATE HIGHWAY ENGINEER	
SECTION 17040-2504		SHEET 2 OF	

REVISION	BY	DATE

FED. ROAD DIV. NO.	STATE	PROJECT NO.	FISCAL YEAR	SHEET NO.
3	FLA.	17040-2504		3



END R/W JOB
EQUATION
STA 580+56.30 & SURVEY
STA 580+56.30 17508-2601

KEY MAP 'C'

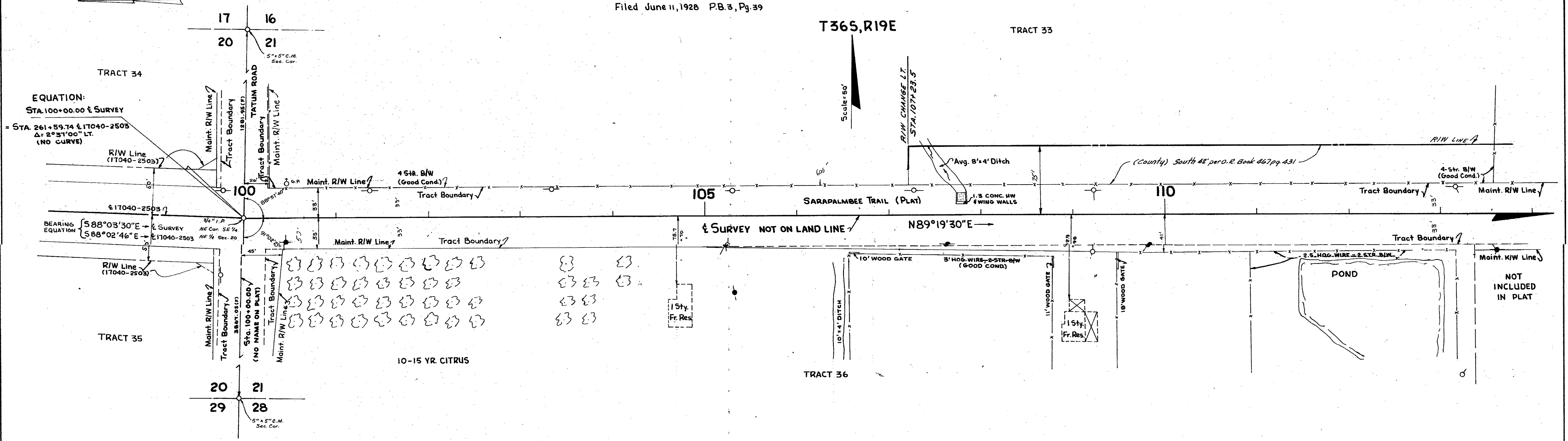
STATE OF FLORIDA STATE ROAD DEPARTMENT			
RIGHT OF WAY MAP			
STATE ROAD No. 780		SARASOTA COUNTY	
DRAWN	BY	DATE	APPROVED BY
TRACED	BY	DATE	DISTRICT ENGINEER
CHECKED	BY	DATE	DISTRICT ENGINEER
COMPARED	BY	DATE	DISTRICT ENGINEER
INDEXED	BY	DATE	DISTRICT ENGINEER

SECTION 17040-2504 SHEET 3 OF

REVISION	BY	DATE
1	L.R.J.	3-16-67

FED. ROAD DIV. NO.	STATE	PROJECT NO.	FISCAL YEAR	SHEET NO.
3	FLA.	17040-2504		4

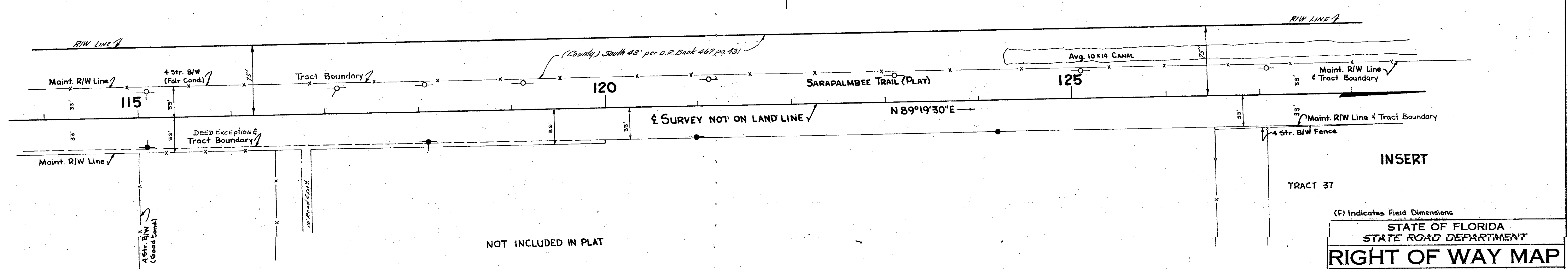
PALMER FARMS THIRD UNIT
Filed June 11, 1928 P.B. 3, Pg. 39



PALMER FARMS THIRD UNIT
Filed June 11, 1928 P.B. 3, Pg. 39

SEC. 21, T36S, R19E

TRACT 33

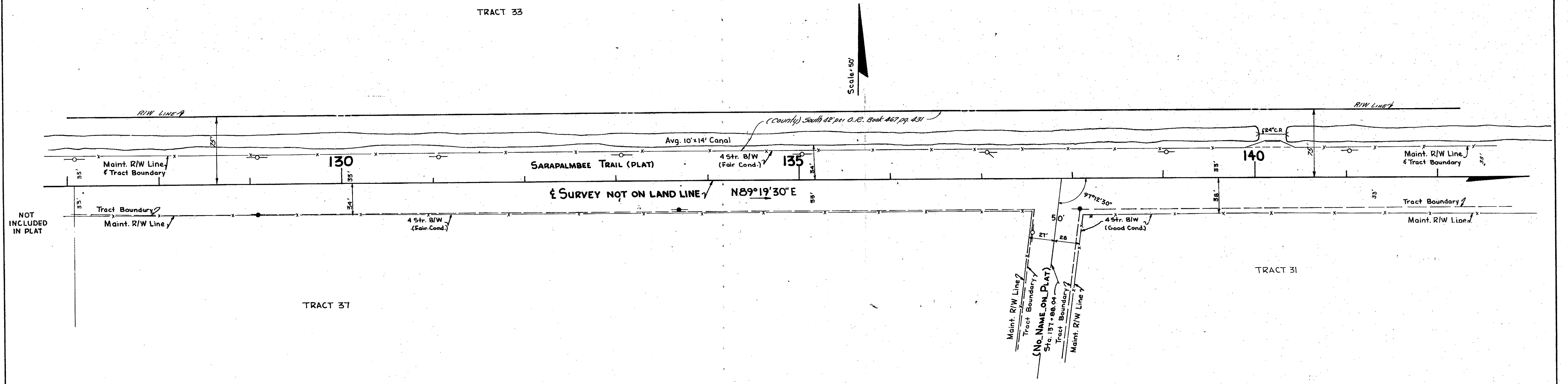


(F) Indicates Field Dimensions

STATE OF FLORIDA STATE ROAD DEPARTMENT			
RIGHT OF WAY MAP			
STATE ROAD NO. 780		SARASOTA COUNTY	
DRAWN	BY	DATE	APPROVED BY
TRACED	R.D.H.	2-15-66	
CHECKED	D.C.	3-15-66	
COMPARED			
INDEXED			
REVISION	BY	DATE	

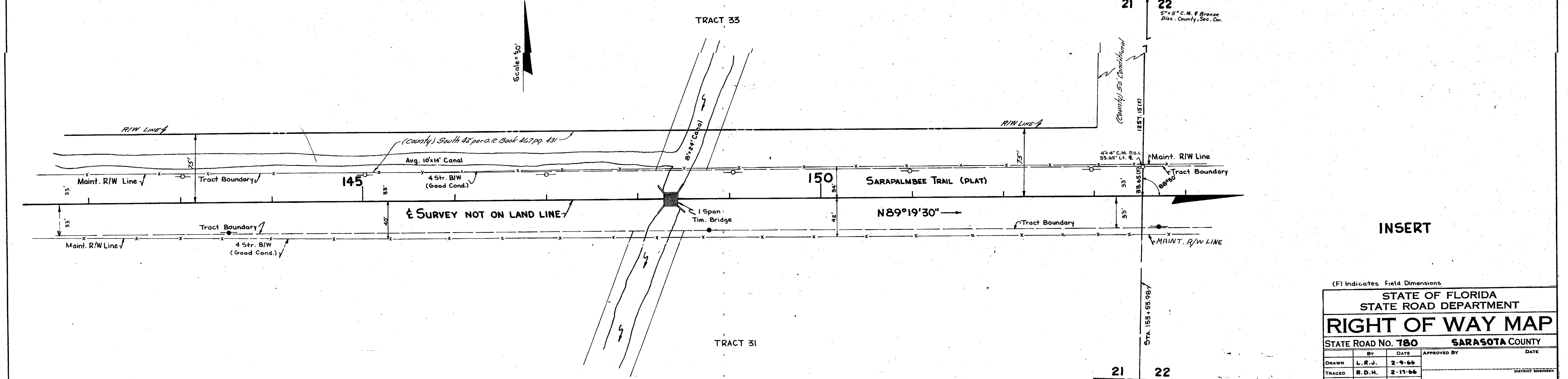
PALMER FARMS THIRD UNIT
 FILED June 11, 1928 P.B. 3, Pg. 39

SEC. 21, T36S, R19E



PALMER FARMS THIRD UNIT
 FILED June 11, 1928 P.B. 3, Pg. 39

T36S, R19E



INSERT

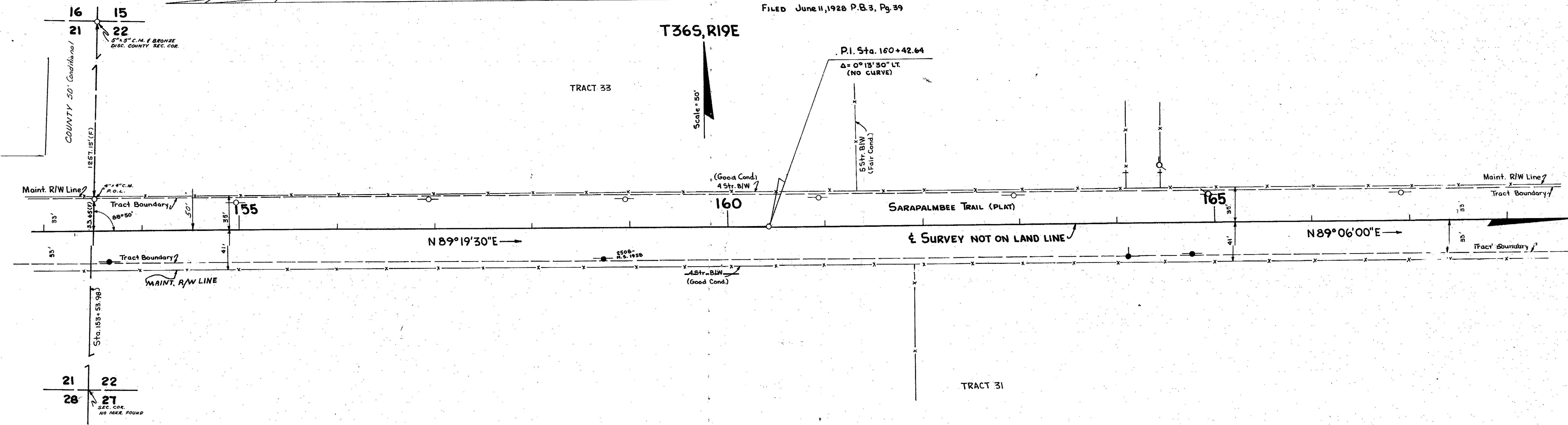
(F) Indicates Field Dimensions

STATE OF FLORIDA			
STATE ROAD DEPARTMENT			
RIGHT OF WAY MAP			
STATE ROAD NO. 180		SARASOTA COUNTY	
DRAWN	L.R.J.	DATE	2-9-66
TRACED	R.D.H.	DATE	2-17-66
CHECKED	D.C.	DATE	3-15-66
COMPARED			
INDEXED			
REVISION	BY	DATE	

FED. ROAD DIV. NO.	STATE	PROJECT NO.	FISCAL YEAR	SHEET NO.
3	FLA.	17040-2504		6

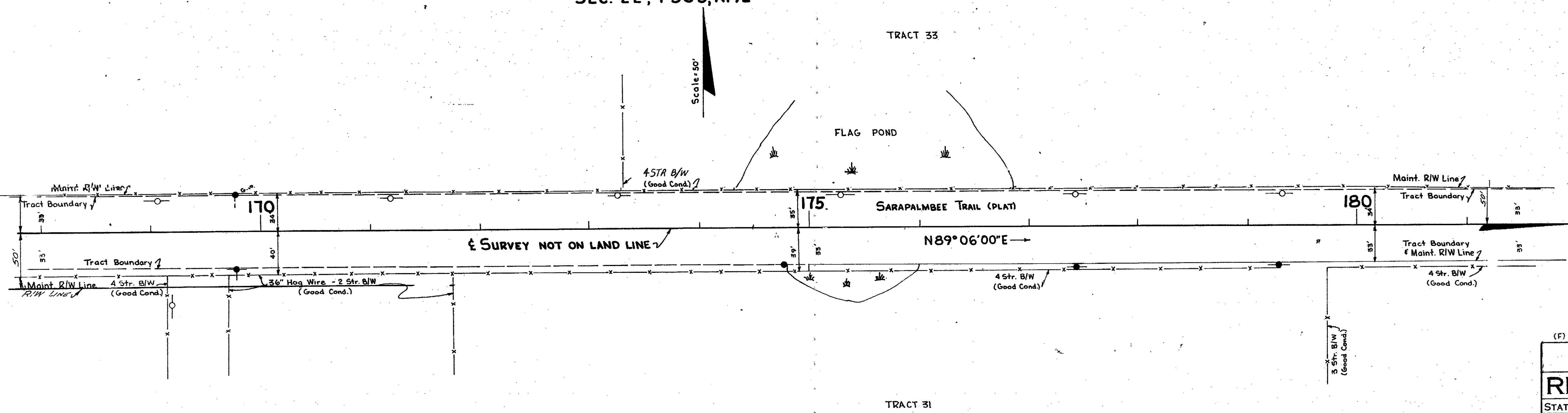
PALMER FARMS THIRD UNIT
FILED June 11, 1928 P.B. 3, Pg. 39

T365, R19E



PALMER FARMS THIRD UNIT
FILED June 11, 1928 P.B. 3, Pg. 39

SEC. 22, T365, R19E

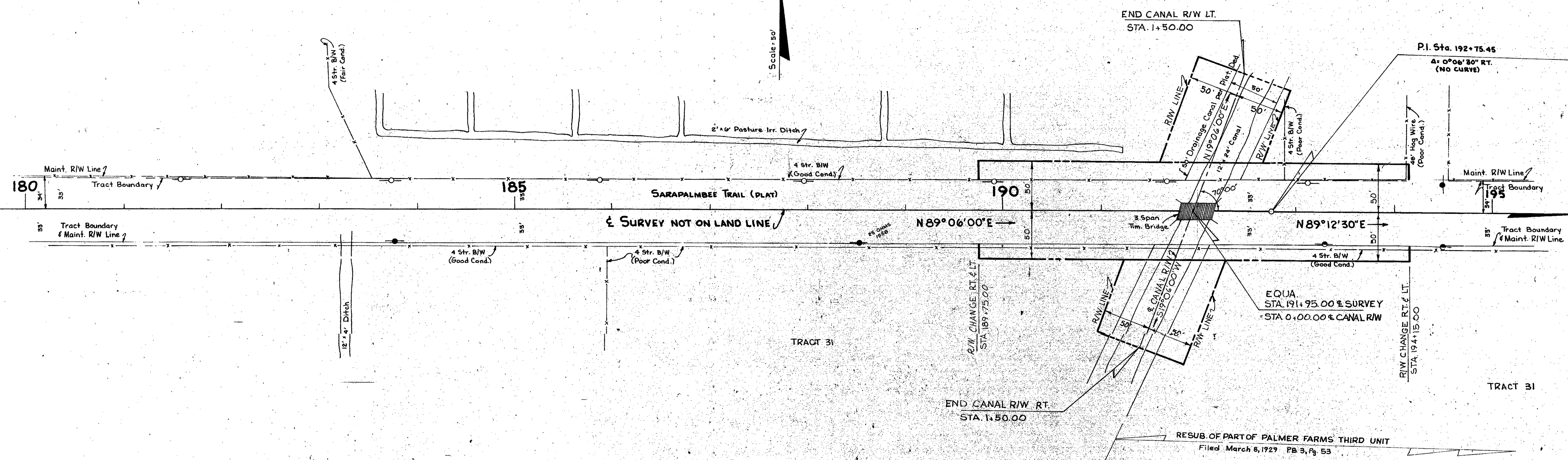


(F) Indicates Field Dimensions

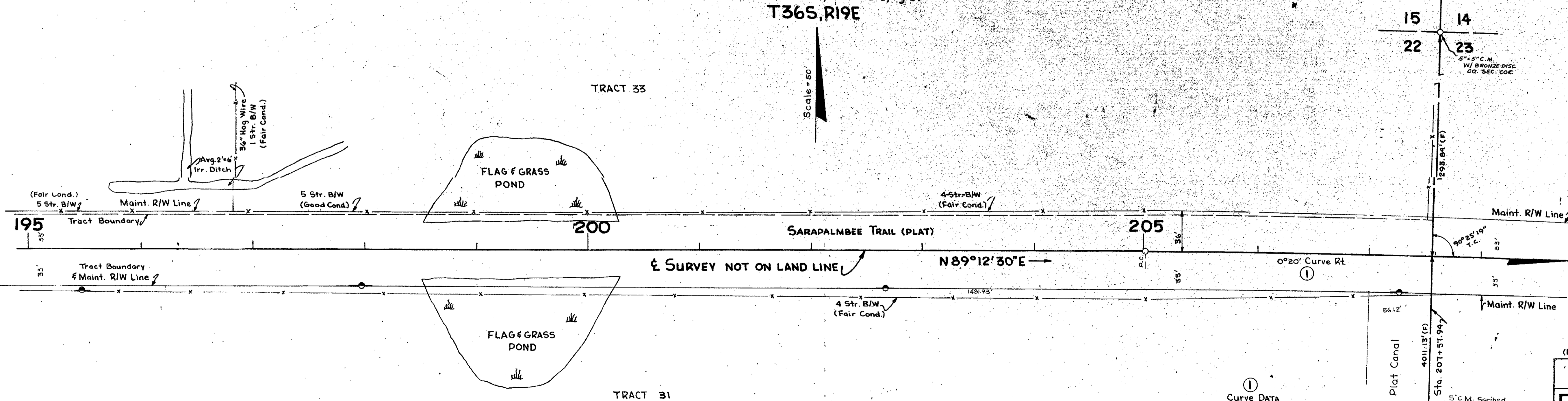
STATE OF FLORIDA STATE ROAD DEPARTMENT			
RIGHT OF WAY MAP			
STATE ROAD No. 1780		SARASOTA COUNTY	
BY	DATE	APPROVED BY	DATE
DRAWN L.R.J.	2-10-66		
TRACED R.D.H.	2-18-66		DISTRICT ENGINEER
CHECKED D.C.	3-15-66		ENGINEER OF RIGHTS OF WAY
COMPARED			STATE HIGHWAY ENGINEER
INDEXED			
REVISION	BY	DATE	
SECTION 17040-2504			SHEET 6 OF

FED. ROAD DIV. NO.	STATE	PROJECT NO.	FISCAL YEAR	SHEET NO.
3	FLA.	17040-2504		7

PALMER FARMS THIRD UNIT
 Filed June 11, 1928 P.B. 3, Pg. 39
SEC. 22
T 365, R 19E



PALMER FARMS THIRD UNIT
 Filed June 11, 1928 P.B. 3, Pg. 39
T 365, R 19E



① Curve DATA
 P.I. Sta. 207+60.01
 Δ: 1°43'30 RT.
 D: 0°20'
 T: 258.77'
 L: 517.50'
 R: 17188.74'
 P.C. Sta. 205+01.24
 P.T. Sta. 210+18.74

(F) Indicates Field Dimensions

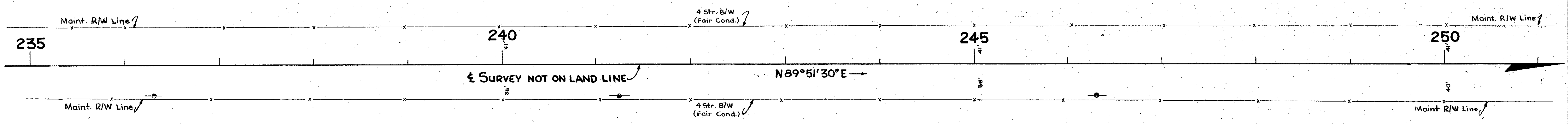
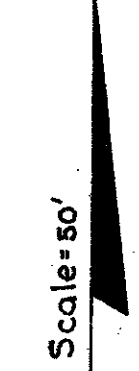
STATE OF FLORIDA STATE ROAD DEPARTMENT			
RIGHT OF WAY MAP			
STATE ROAD NO. 780		SARASOTA COUNTY	
DRAWN	L.R.J.	DATE	2-15-66
TRACED	R.D.H.	DATE	2-21-66
CHECKED	D.C.	DATE	3-15-66
COMPARED			
INDEXED			
APPROVED BY	<i>[Signature]</i>		
	DISTRICT ENGINEER		
	ENGINEER OF RIGHTS OF WAY		
	STATE HIGHWAY ENGINEER		
SECTION 17040-2504		SHEET 7 OF	

RESUB. OF PART OF PALMER FARMS THIRD UNIT
 Filed March 8, 1929 P.B. 3, Pg. 53

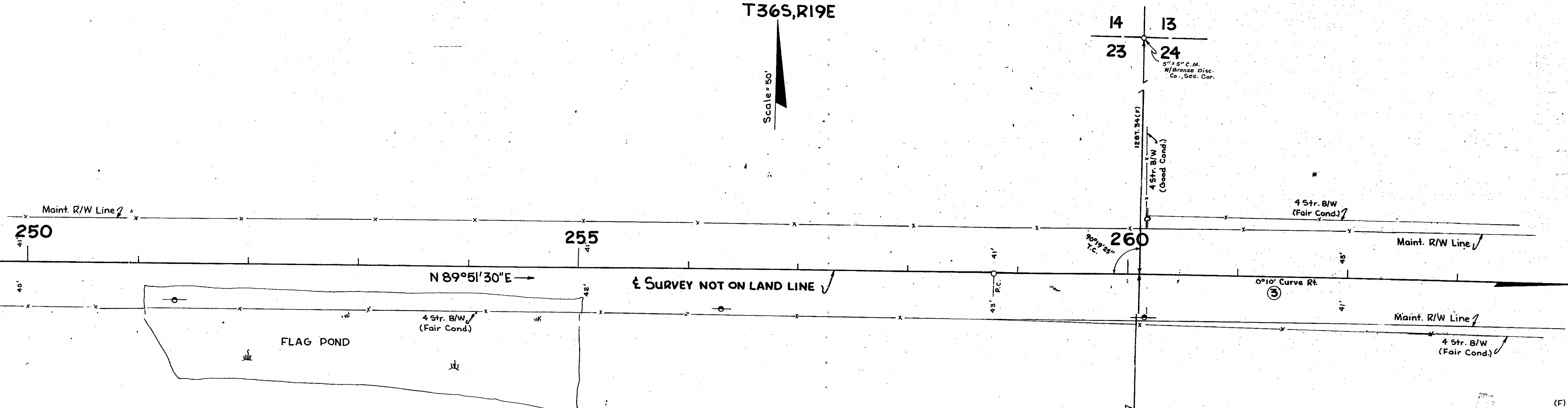
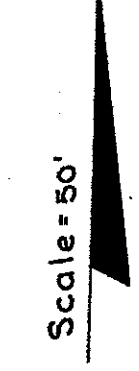
REVISION	BY	DATE

FED. ROAD DIV. NO.	STATE	PROJECT NO.	FISCAL YEAR	SHEET NO.
5	FLA.	17040-2504		9

SEC. 23, T36S, R19E

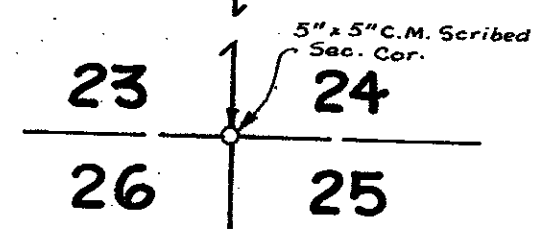


T36S, R19E



INSERT

Curve Data
 P.I. Sta. 262 + 38.82
 Δ = 1° 12' 00" Rt.
 D = 0° 10'
 T = 360.01'
 L = 120.00'
 R = 3437.48'
 P.C. Sta. 258 + 78.81
 P.T. Sta. 265 + 98.81



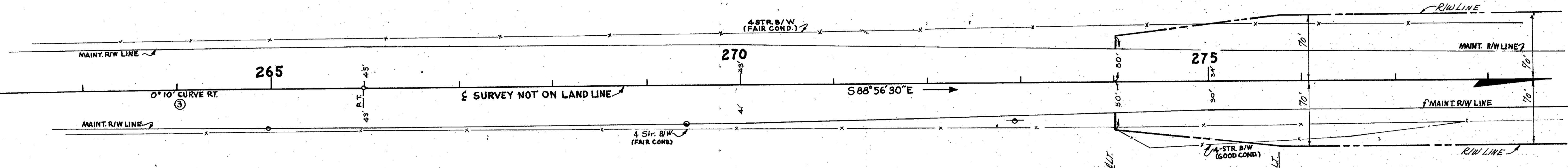
(F) Indicates Field Dimensions

STATE OF FLORIDA STATE ROAD DEPARTMENT			
RIGHT OF WAY MAP			
STATE ROAD NO. 780 SARASOTA COUNTY			
DRAWN	BY	DATE	APPROVED BY
TRACED	R.D.H.	2-17-66	
CHECKED	D.C.	3-15-66	
INDEXED			

FED. ROAD DIV. NO.	STATE	PROJECT NO.	FISCAL YEAR	SHEET NO.
3	FLA.	17040-2504-18		10

SEC. 24, T36S R19E

SCALE: 1"=50'



③ CURVE DATA
 P.I. STA. 262+38.82
 $\Delta = 12^{\circ}00' RT.$
 $D = 0^{\circ}10'$
 $T = 360.01'$
 $L = 720.00'$
 $R = 34377.48'$
 P.C. STA. 258+78.81
 P.T. STA. 265+98.81

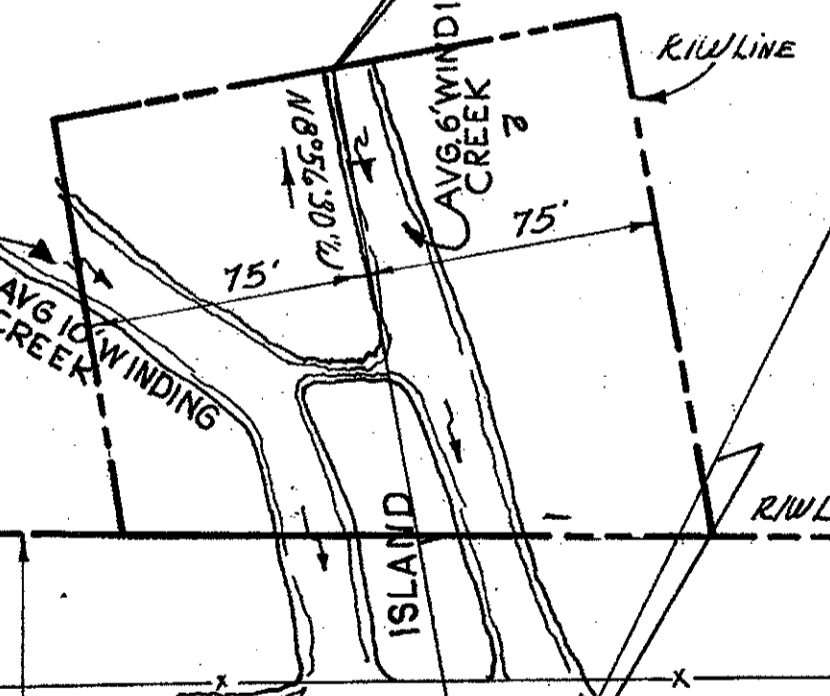
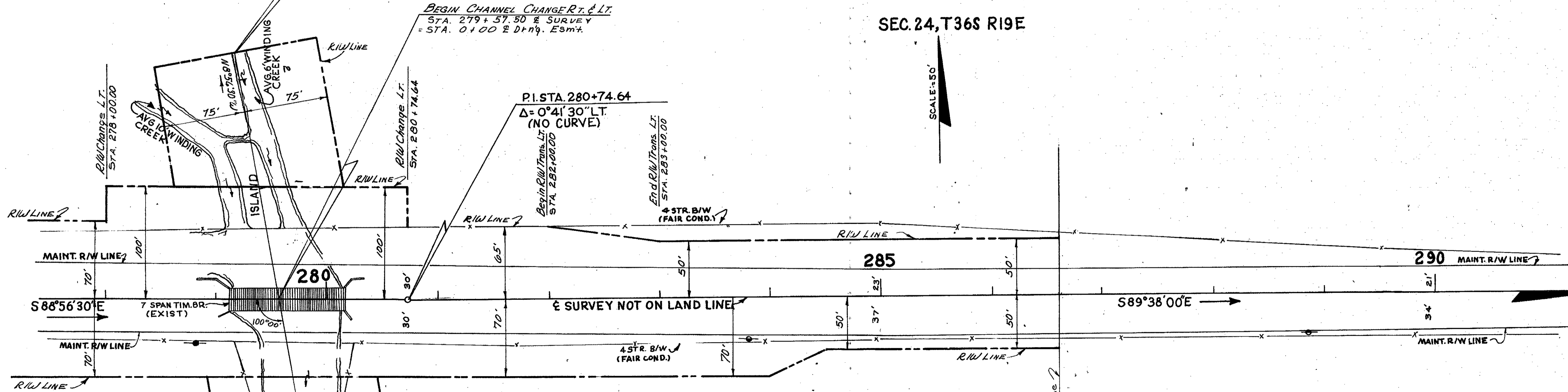
End Channel Change LT.
 STA. 2+25.00

BEGIN CHANNEL CHANGE RT. & LT.
 STA. 279+57.50 & SURVEY
 = STA. 0+00 & Dmg. Esm't.

P.I. STA. 280+74.64
 $\Delta = 0^{\circ}41'30" LT.$
 (NO CURVE)

SEC. 24, T36S R19E

SCALE: 1"=50'



End Channel Change RT.
 STA. 2+25.00

P.I. STA. 280+74.64
 $\Delta = 0^{\circ}41'30" LT.$
 (NO CURVE)

Begin R/W Trans. RT.
 STA. 281+00.00

End R/W Trans. RT.
 STA. 284+50.00

APPROX. 1/4 Sec. Line

INSERT

(F) Indicates Field Dimensions

STATE OF FLORIDA STATE ROAD DEPARTMENT			
RIGHT OF WAY MAP			
STATE ROAD No. 780		SARASOTA COUNTY	
DRAWN	BY	DATE	APPROVED BY
TRACED	R.L.N.	2-22-66	
CHECKED	D.C.	3-16-66	
COMPARED			
INDEXED			
SECTION. 17040-2504-		SHEET 10 OF	

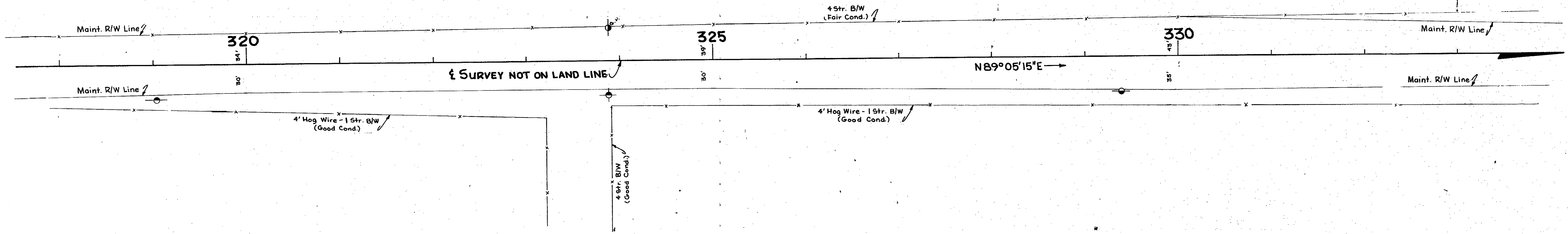
REVISION	BY	DATE

FED. ROAD DIV. NO.	STATE	PROJECT NO.	FISCAL YEAR	SHEET NO.
3	FLA.	17040-2504		12

SEC. 19, T. 36S, R. 20E



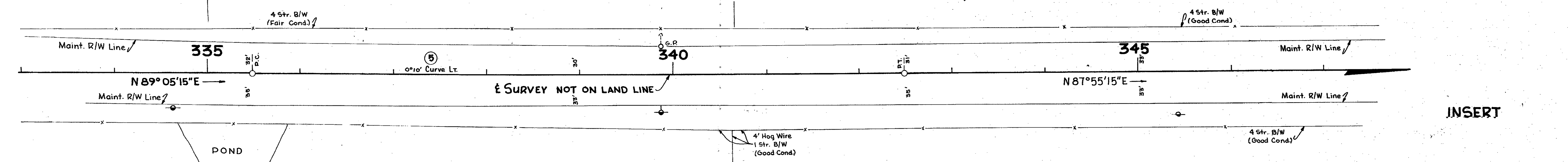
FLAG POND



SEC. 19, T. 36S, R. 20E



FLAG POND



INSERT

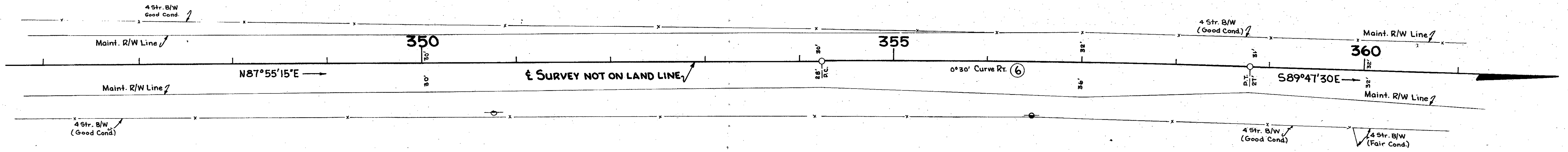
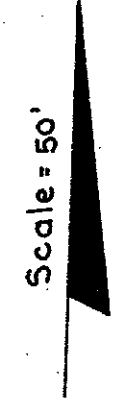
(5)
 Curve Data
 P.I. Sta. 338 + 98.81
 Δ = 1°10'00" LT.
 D = 0°10'
 T = 350.01'
 L = 700.00
 R = 34371.48'
 P.C. Sta. 335 + 48.80
 P.T. Sta. 342 + 48.80

(F) Indicates Field Dimensions

STATE OF FLORIDA STATE ROAD DEPARTMENT			
RIGHT OF WAY MAP			
STATE ROAD NO. 1780		SARASOTA COUNTY	
DRAWN	BY	DATE	APPROVED BY
TRACED	R.D.H.	2-21-66	
CHECKED	D.C.	3-16-66	
INDEXED			
REVISION	BY	DATE	
SECTION. 17040-2504			SHEET 12 OF

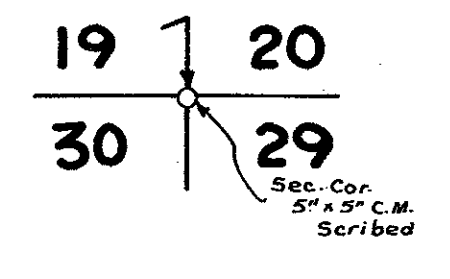
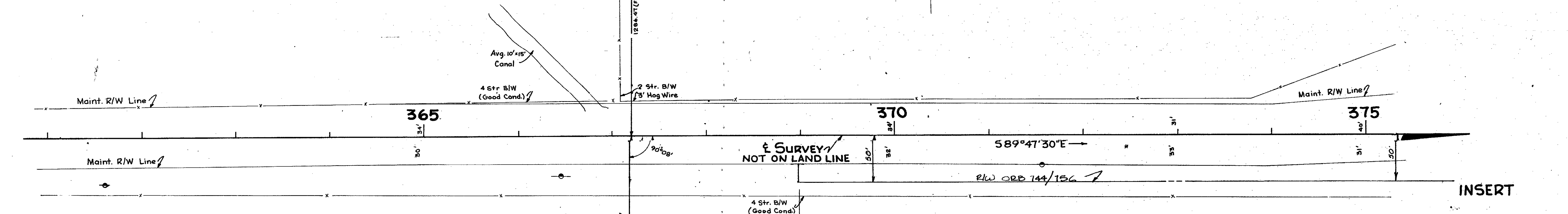
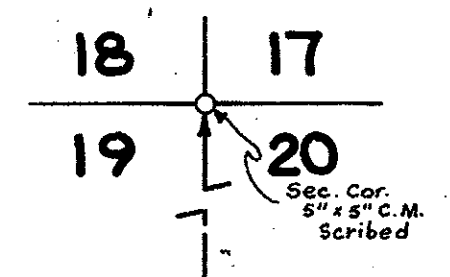
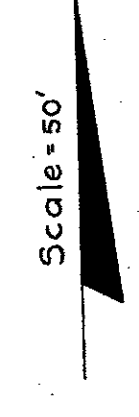
FED. ROAD DIV. NO.	STATE	PROJECT NO.	FISCAL YEAR	SHEET NO.
3	FLA.	17040-2504		13

SEC. 19, T365, R20E



⑥
Curve Data
P.I. Sta. 356 + 51.92
A = 2°11'15" Rt.
D = 0°30'
T = 228.19'
L = 437.50'
R = 11459.16'
P.C. Sta. 354 + 23.14
P.T. Sta. 358 + 80.64

T365, R20E



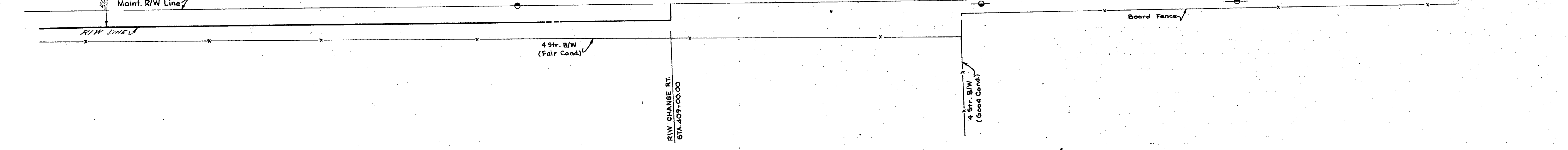
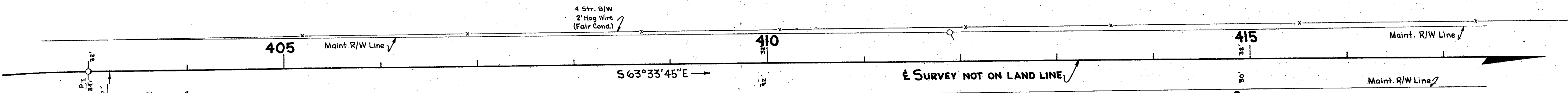
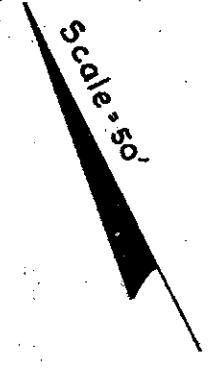
INSERT

(F) Indicates Field Dimensions

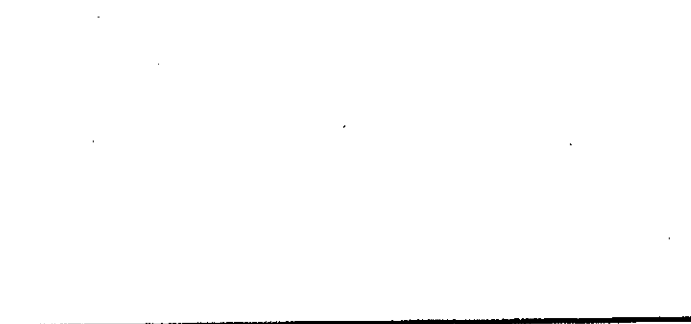
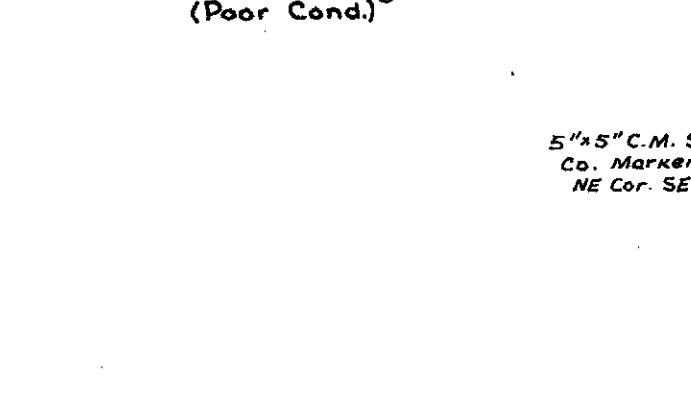
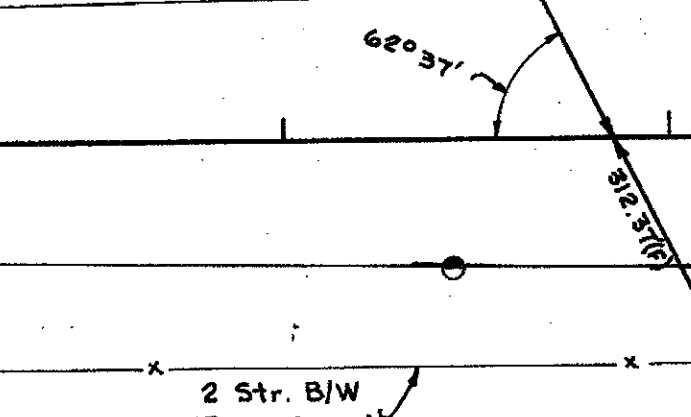
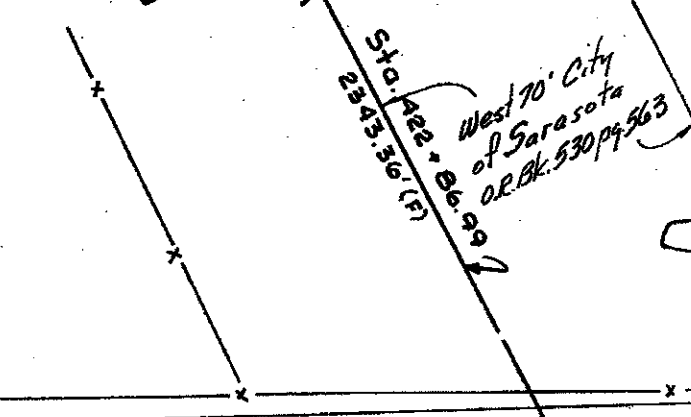
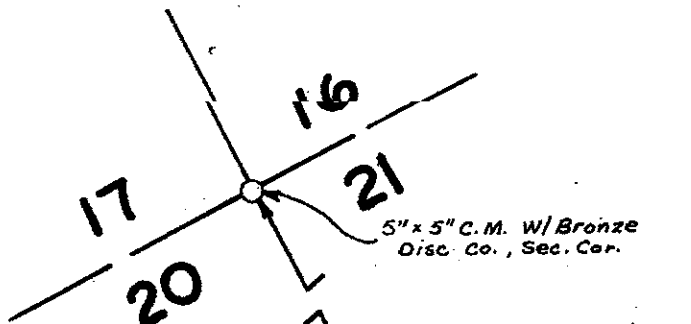
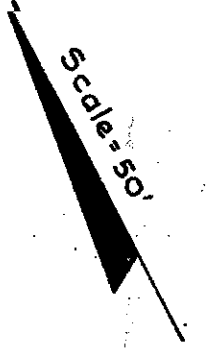
STATE OF FLORIDA STATE ROAD DEPARTMENT			
RIGHT OF WAY MAP			
STATE ROAD No. 780		SARASOTA COUNTY	
DRAWN	BY	DATE	APPROVED BY
TRACED	R.D.M.	2-25-66	
CHECKED	D.C.	3-16-66	
COMPALED			
INDEXED			
REVISION	BY	DATE	

FED. ROAD DIV. NO.	STATE	PROJECT NO.	FISCAL YEAR	SHEET NO.
3	FLA.	17040-2504		15

SEC. 20, T36S, R20E



T36S, R20E



(B)
 Curve Data
 P.I. Sta. 431 + 56.65
 $\Delta = 25^{\circ} 39' 00''$ Lt.
 $D = 3^{\circ} 00'$
 $T = 434.79'$
 $L = 855.00'$
 $R = 1909.66'$
 P.C. Sta. 421 + 22.06
 P.T. Sta. 435 + 77.06

INSERT

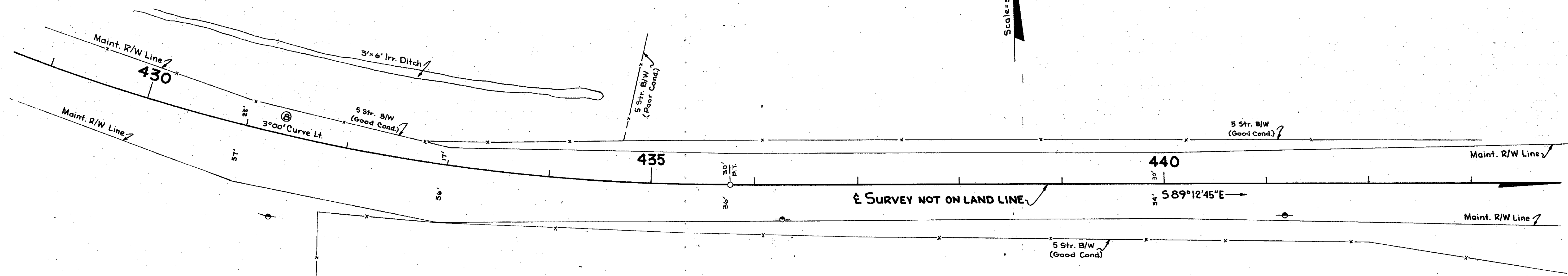
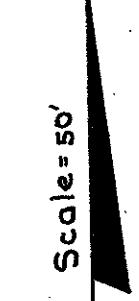
(F) Indicates Field Dimensions

STATE OF FLORIDA STATE ROAD DEPARTMENT			
RIGHT OF WAY MAP			
STATE ROAD NO. 780		SARASOTA COUNTY	
BY	DATE	APPROVED BY	DATE
DRAWN L.R.O.	2-28-66		
TRACED R.D.H.	3-1-66		
CHECKED D.C.	3-16-66		
COMPARED			
INDEXED			
SECTION 17040-2504		SHEET 15 OF	

REVISION	BY	DATE

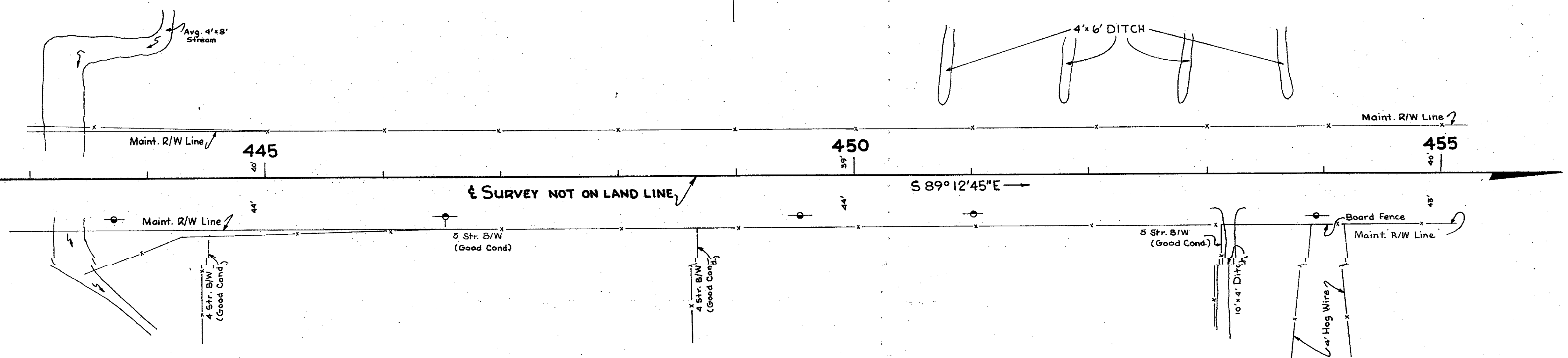
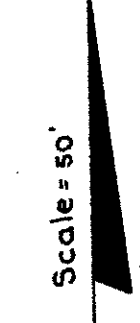
FED. ROAD DIV. NO.	STATE	PROJECT NO.	FISCAL YEAR	SHEET NO.
3	FLA.	17040-2504		16

SEC. 21, T36S, R20E



Curve Data
 P.I. Sta. 431 + 56.85
 $\Delta = 25^\circ 39' 00''$ LT.
 $D = 3^\circ 00'$
 $T = 434.79'$
 $L = 855.00'$
 $R = 1909.86'$
 P.C. Sta. 427 + 22.06
 P.T. Sta. 435 + 11.06

SEC. 21, T36S, R20E



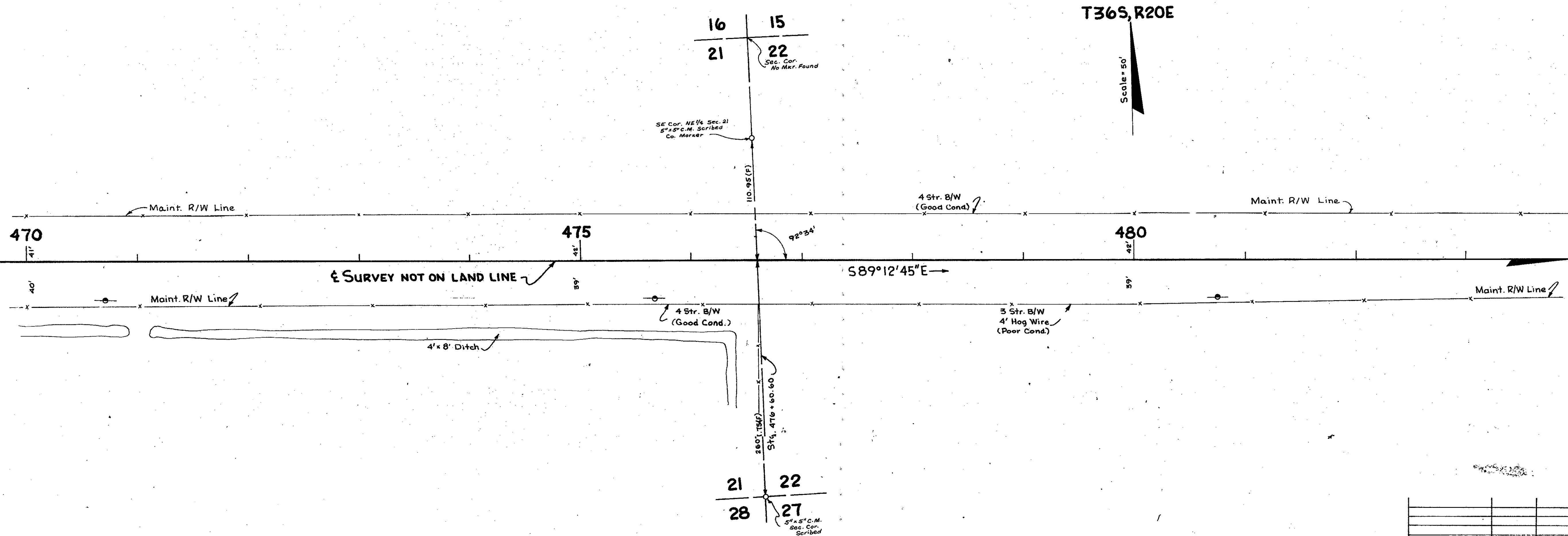
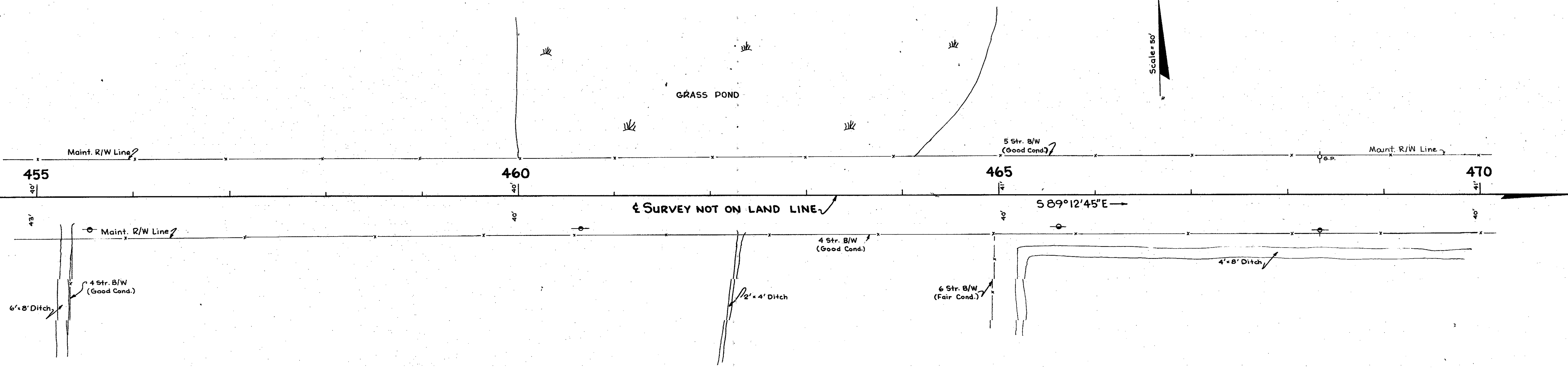
INSERT

(F) Indicates Field Dimensions

STATE OF FLORIDA STATE ROAD DEPARTMENT			
RIGHT OF WAY MAP			
STATE ROAD NO. 780		SARASOTA COUNTY	
DRAWN BY	DATE	APPROVED BY	DATE
L.R.J.	3-1-66		
TRACED BY	DATE	DISTRICT ENGINEER	
R.D.H.	3-2-66		
CHECKED BY	DATE	ENGINEER OF RIGHTS OF WAY	
D.C.	3-16-66		
COMPARED		STATE HIGHWAY ENGINEER	
INDEXED			
REVISION	BY	DATE	SECTION. 17040-2504 SHEET 16 OF

FED. ROAD DIV. NO.	STATE	PROJECT NO.	FISCAL YEAR	SHEET NO.
3	FLA.	17040-2504		17

SEC. 21, T36S, R20E



T36S, R20E

INSERT

(F) Indicates Field Dimensions

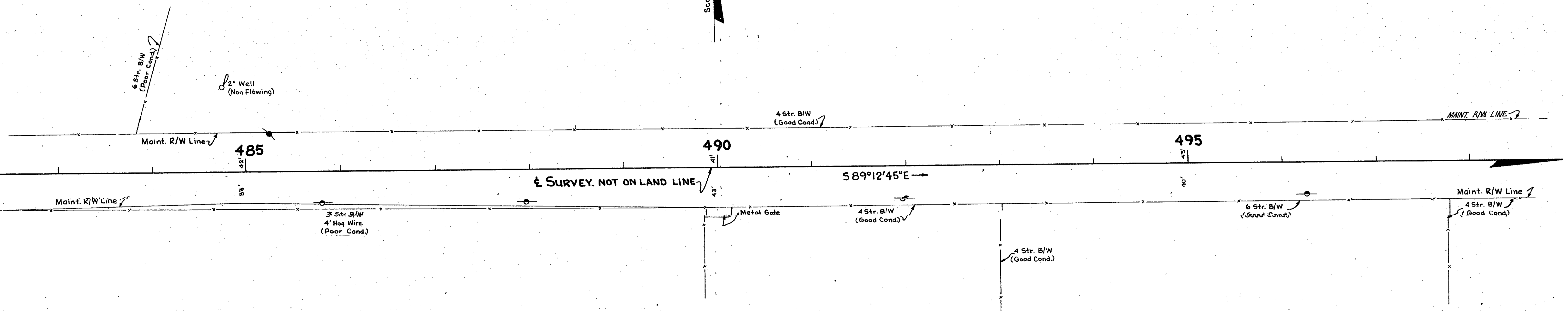
STATE OF FLORIDA STATE ROAD DEPARTMENT			
RIGHT OF WAY MAP			
STATE ROAD No. 780		SARASOTA COUNTY	
BY	DATE	APPROVED BY	DATE
DRAWN L. R. J.	3-2-66		
TRACED R. D. H.	3-2-66		
CHECKED D. C.	3-16-66		
COMPARED			
INDEXED			
REVISION	BY	DATE	

SECTION 17040-2504 SHEET 17 OF

FED. ROAD DIV. NO.	STATE	PROJECT NO.	FISCAL YEAR	SHEET NO.
3	FLA.	17040-2504		18

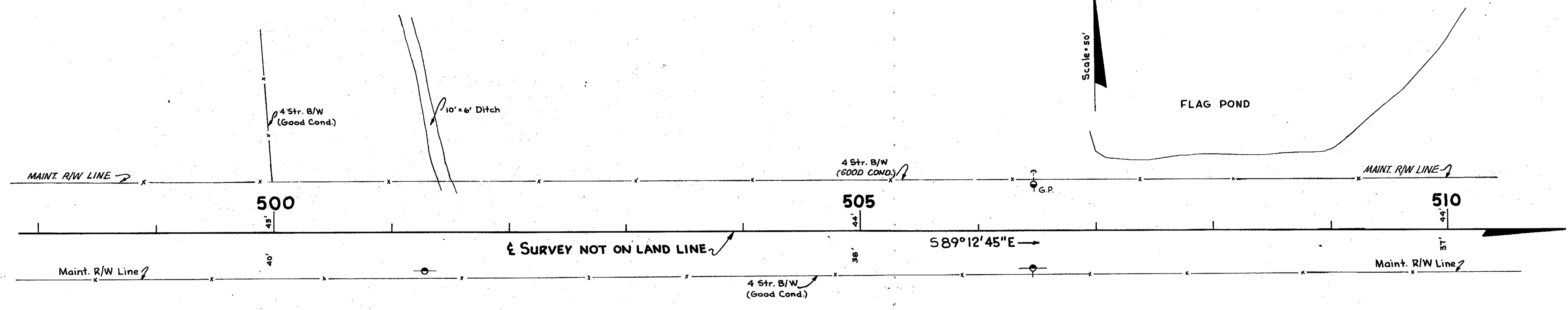
SEC. 22, T36S, R20E

Scale = 50'



SEC. 22, T36S, R20E

Scale = 50'



INSERT

(F) Indicates Field Dimensions

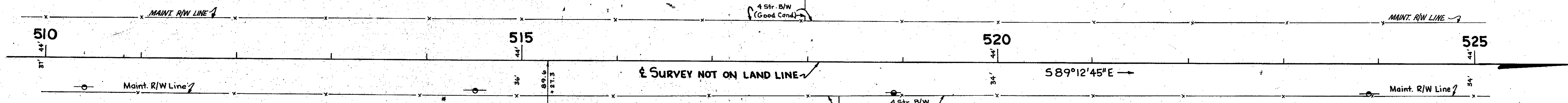
STATE OF FLORIDA STATE ROAD DEPARTMENT			
RIGHT OF WAY MAP			
STATE ROAD No. 780		SARASOTA COUNTY	
BY	DATE	APPROVED BY	DATE
DRAWN L.R.J.	3-2-66		
TRACED R.O.H.	3-2-66		DISTRICT ENGINEER
CHECKED D.C.	3-16-66		ENGINEER OF RIGHTS OF WAY
COMPARED			STATE HIGHWAY ENGINEER
INDEXED			

REVISION	BY	DATE

FED. ROAD DIV. NO.	STATE	PROJECT NO.	FISCAL YEAR	SHEET NO.
3	FLA.	17040-2504		19

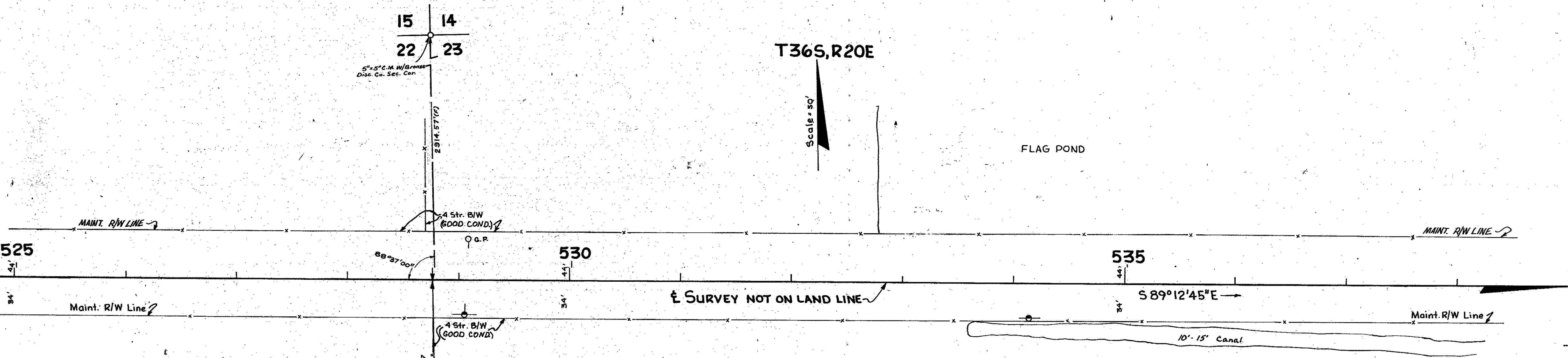
SEC. 22, T36S, R20E

Scale = 50'



T36S, R20E

Scale = 50'

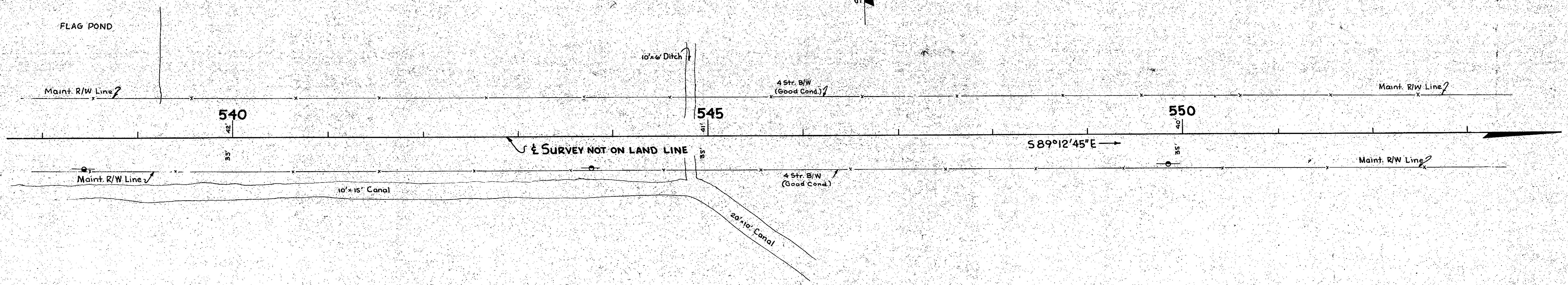
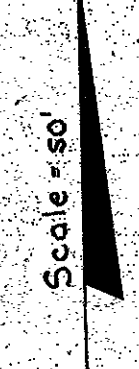


INSERT

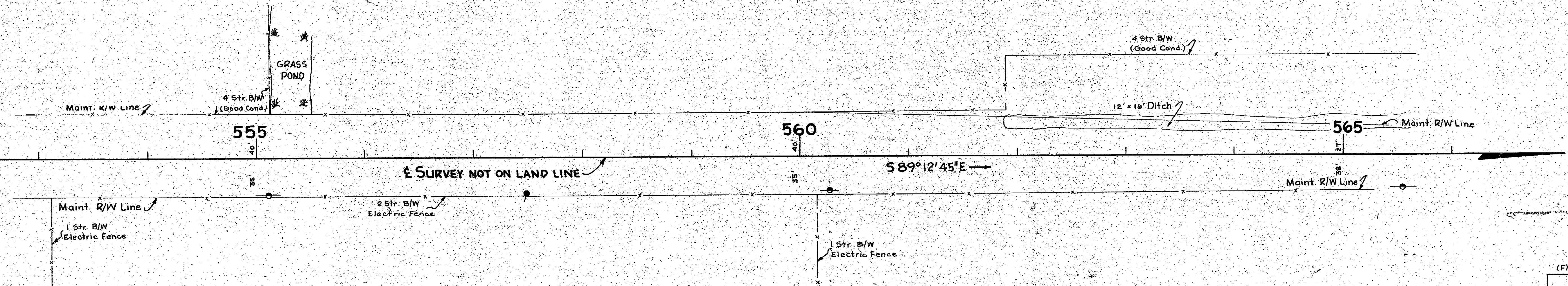
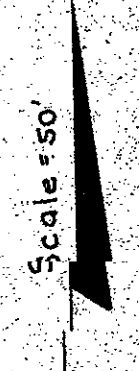
(F) Indicates Field Dimensions

STATE OF FLORIDA STATE ROAD DEPARTMENT			
RIGHT OF WAY MAP			
STATE ROAD No. 780		SARASOTA COUNTY	
BY	DATE	APPROVED BY	DATE
DRAWN L.R.J.	3-3-66		
TRACED R.D.H.	3-3-66		
CHECKED D.C.	5-17-66		
COMPARED			
INDEXED			
REVISION		BY	DATE

SEC. 23, T36S, R20E



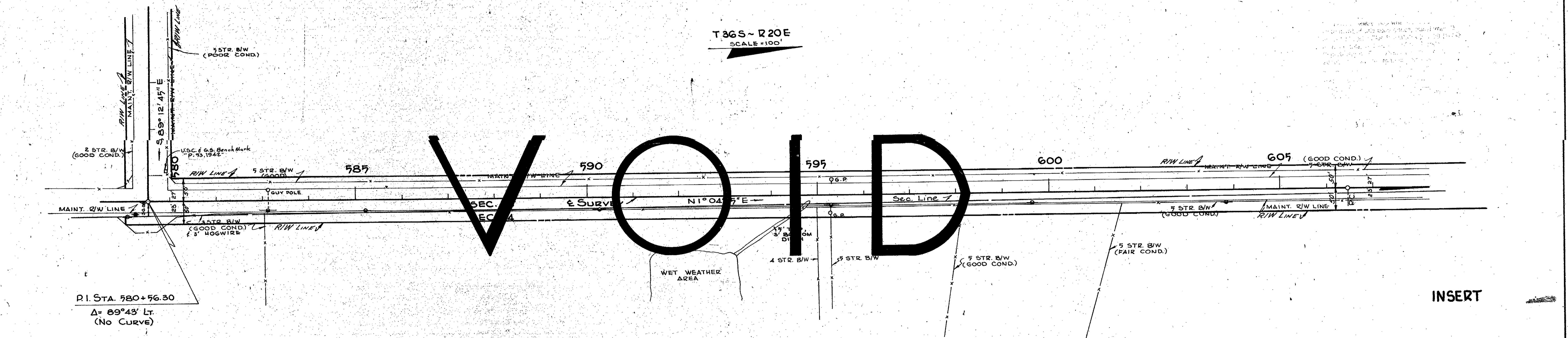
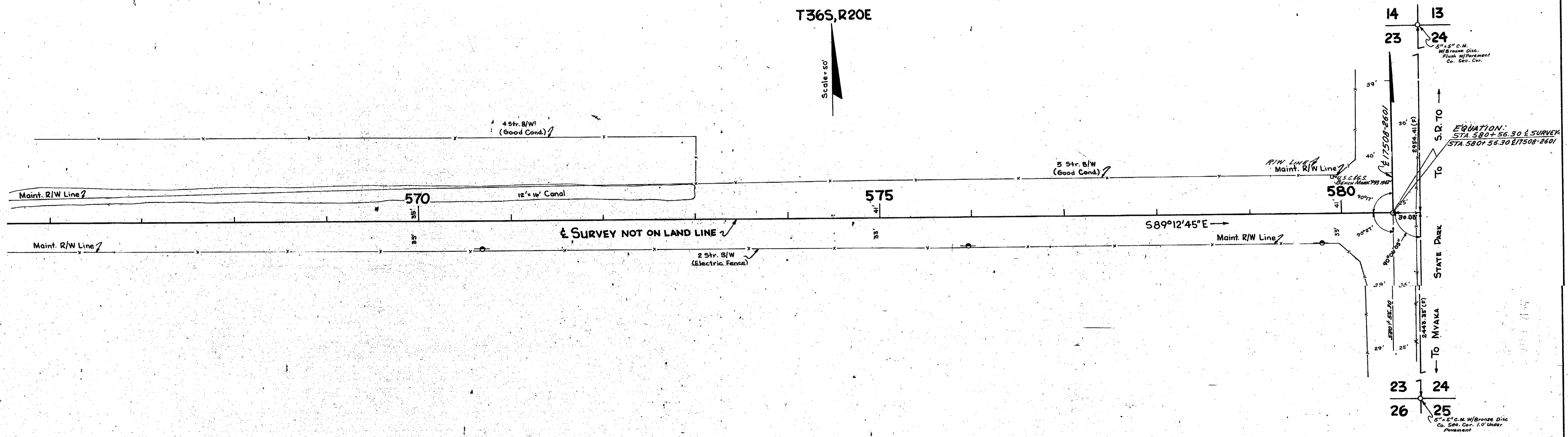
SEC. 23, T36S, R20E



INSERT

(F) Indicates Field Dimensions

STATE OF FLORIDA			
STATE ROAD DEPARTMENT			
RIGHT OF WAY MAP			
STATE ROAD No. 780 SARASOTA COUNTY			
BY	DATE	APPROVED BY	DATE
DRAWN L.R.J.	3-3-66		
TRACED R.D.H.	3-3-66		
CHECKED D.C.	3-17-66		
COMPARED			
INDEXED			

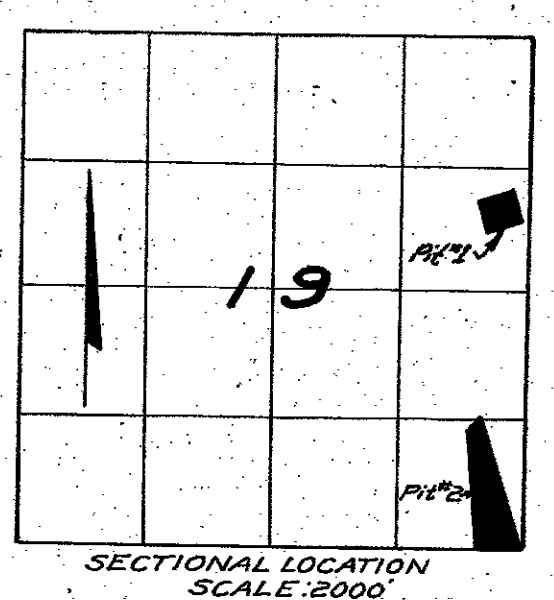
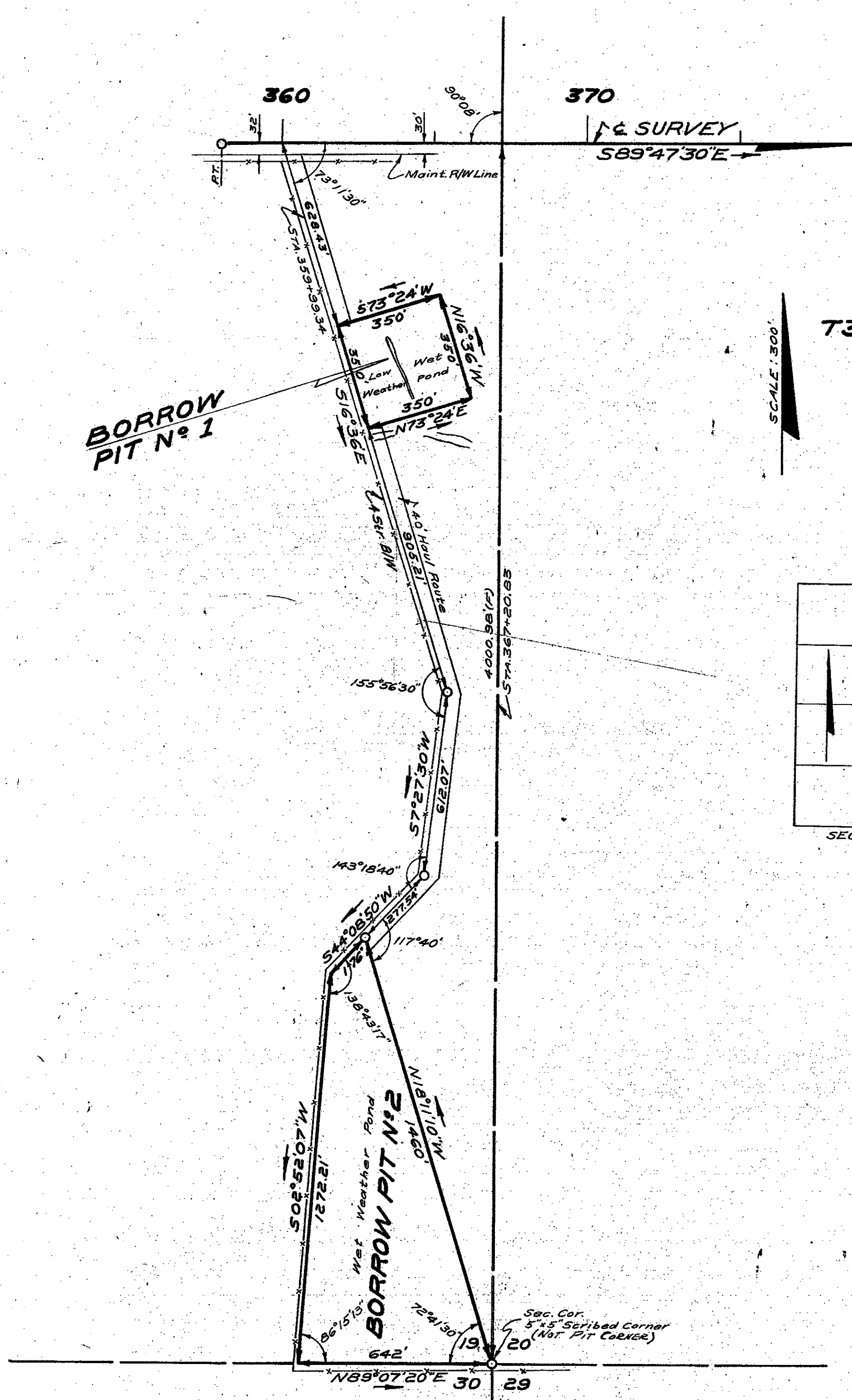


VOID

INSERT

(F) Indicates Field Dimensions

STATE OF FLORIDA STATE ROAD DEPARTMENT			
RIGHT OF WAY MAP			
STATE ROAD NO. 780		SARASOTA COUNTY	
BY	DATE	APPROVED BY	DATE
DRAWN L.R.J.	3-3-66		
TRACED R.D.H.	3-4-66		
CHECKED D.C.	3-17-66		
COMPARED			
INDEXED			
SECTION 17040-2504		SHEET 21 OF	



BORROW PITS

PROPOSED R/W HAS NOT BEEN ACQUIRED AS OF 5-30-68
 (R) Indicates Field Dimension

STATE OF FLORIDA STATE ROAD DEPARTMENT			
RIGHT OF WAY MAP			
STATE ROAD NO. 780		SARASOTA COUNTY	
By	DATE	APPROVED BY	DATE
DRAWN	W. J. P. 5-10-68		
TRACED	C. U. K. 5-10-68		
CHECKED	D. C. 5-13-68		
COMPILED			
ISSUED			