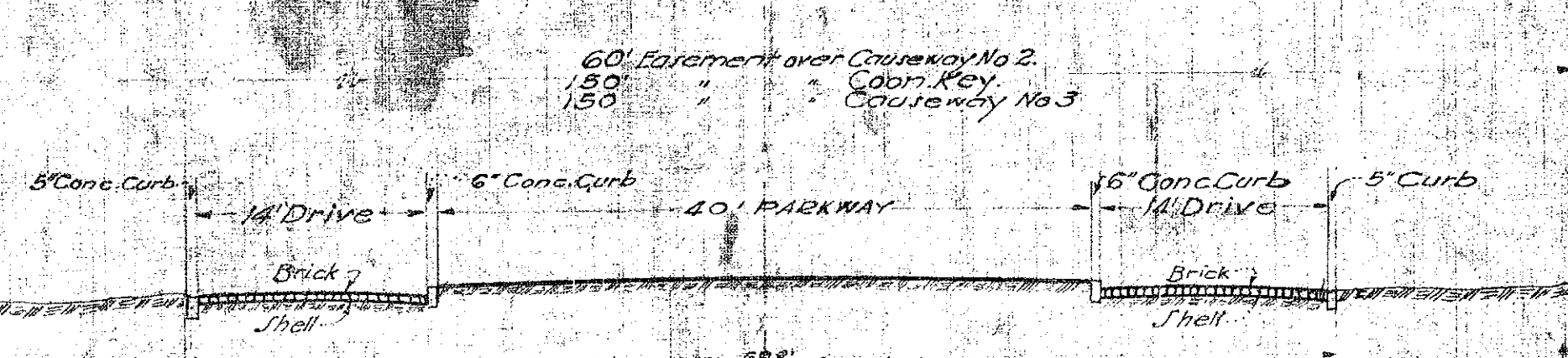
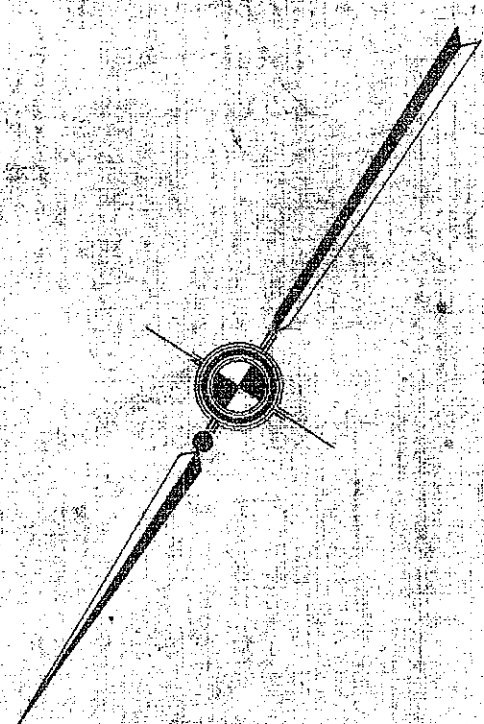
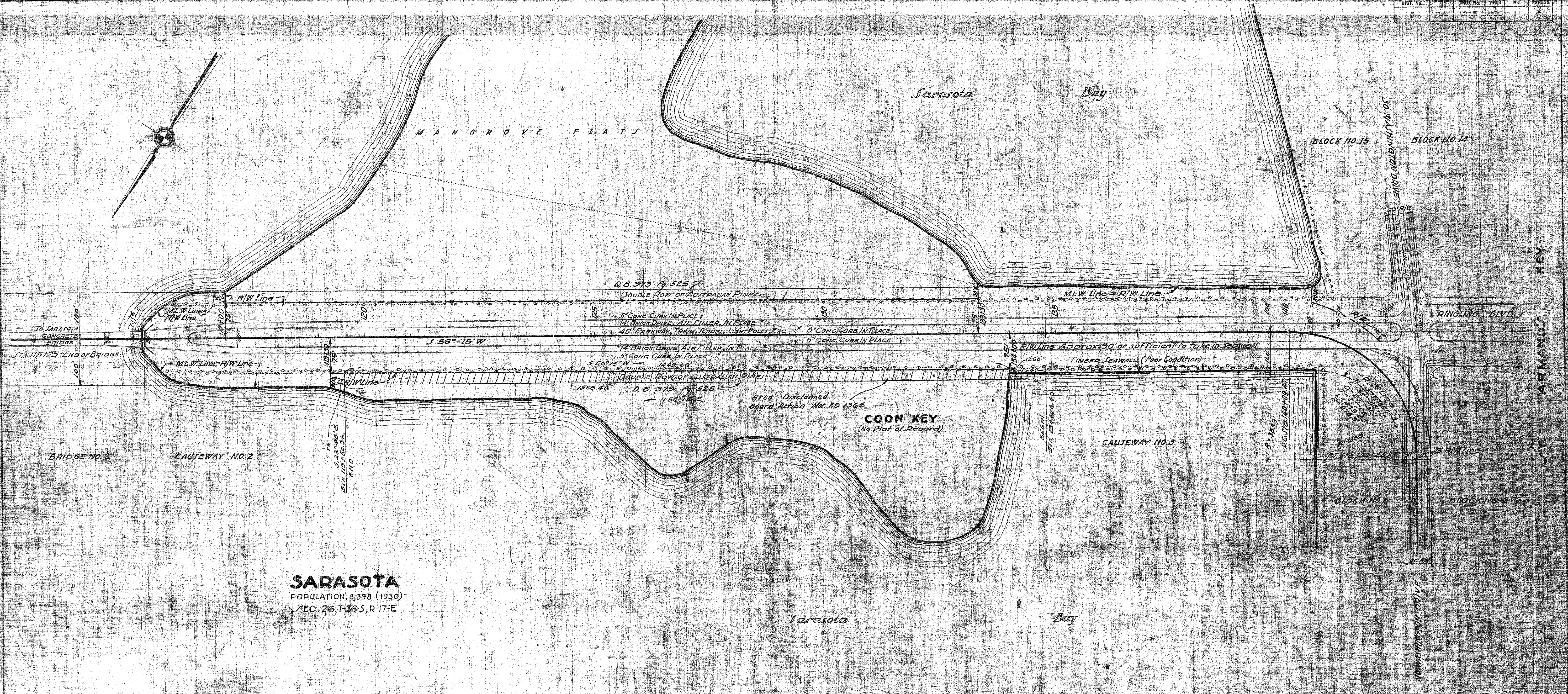
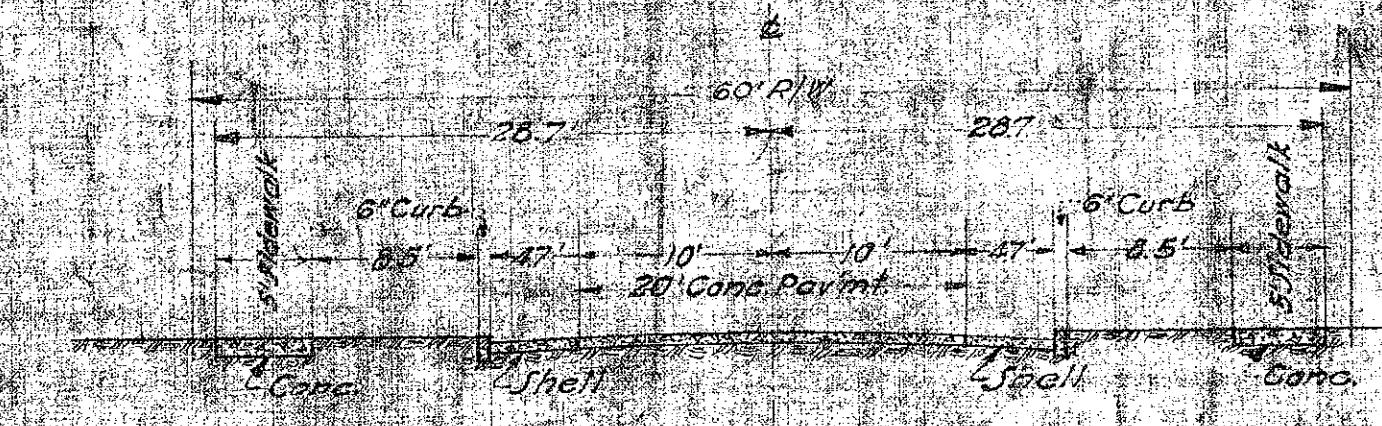


FED. ROAD DIST. NO.	FED. AID PROJ. NO.	FED. AID YEAR	STATE PROJ. NO.	TOTAL SHEETS
5	FLA	12/15	1036	2



TYPICAL SECTION OF PAVEMENT, CURBS AND PARKWAY IN PLACE ON CAUSEWAYS AND KEY. - STA. 117+26 TO STA. 142+37



TYPICAL SECTION OF PAVEMENT, CURBS AND SIDEWALKS IN PLACE ON ST. ARMANDS KEY. STA. 144+44.83 TO STA. 159+32.92

The above showing existing alignment  
12.5.31 April 12, 1931  
J. McCondy  
Asst. Eng. of C&D

Ed (750) 1703

STATE OF FLORIDA  
STATE ROAD DEPARTMENT

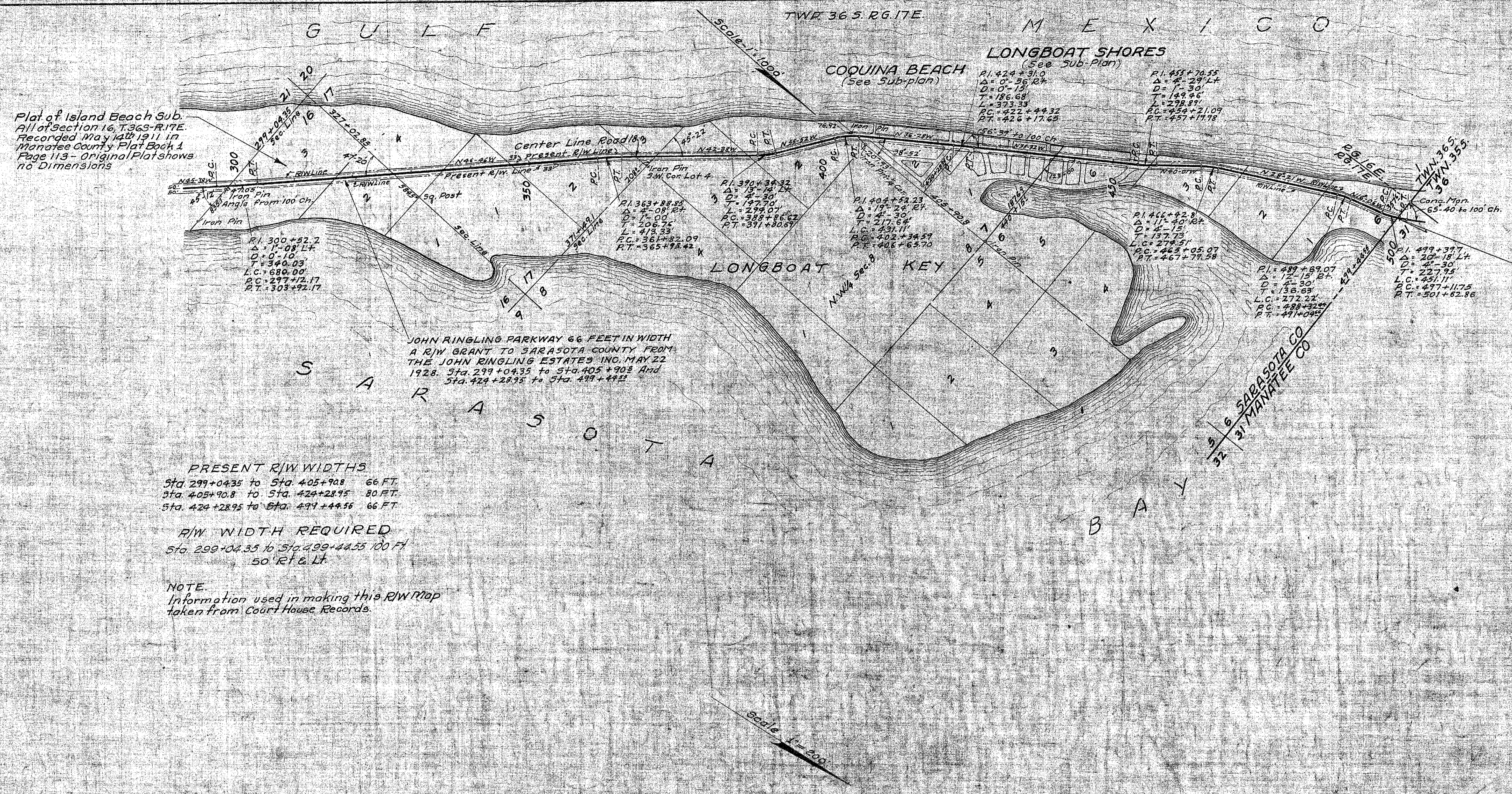
R/W MAP - STATE PROJECT NO. 1215  
STATE ROAD NO. 15 - SARASOTA COUNTY

SCALE: 1" = 100'

Name	Date	Appropriation
Designed		
Drawn	2-15-30	
Traced		
Checked		
Revised		

FED. ROAD DIST. NO.	STATE	FED. AID PROJ. NO.	FISCAL YEAR	SHEET NO.	TOTAL SHEETS
8	FLA.	121B	36	2	4

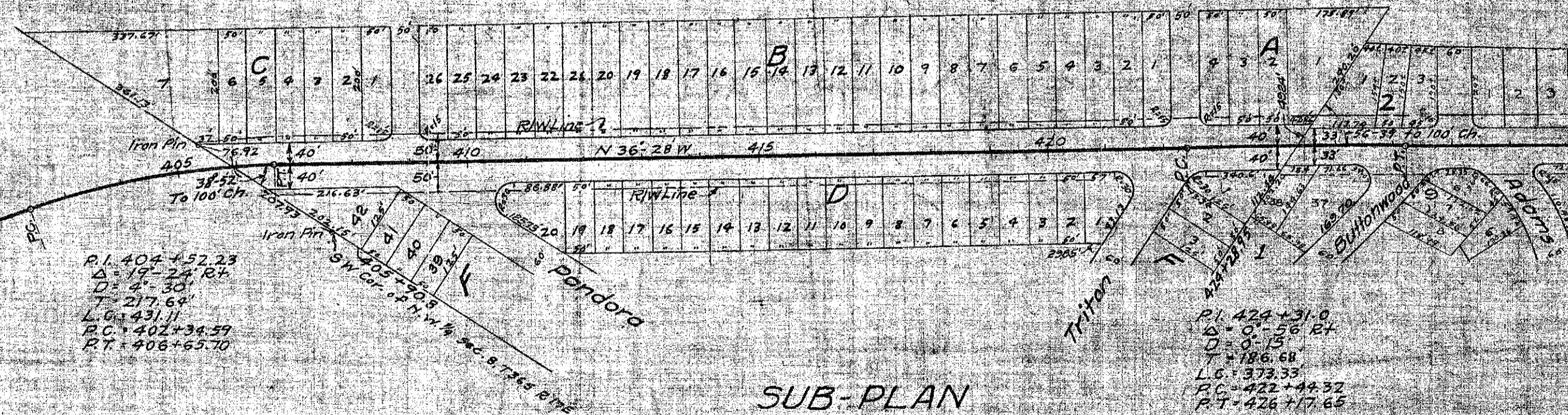
Plat of Island Beach Sub. All of section 16, T.36S-R.17E. Recorded May 14th 1911 in Manatee County Plat Book 4 Page 113 - Original Plat shows no Dimensions



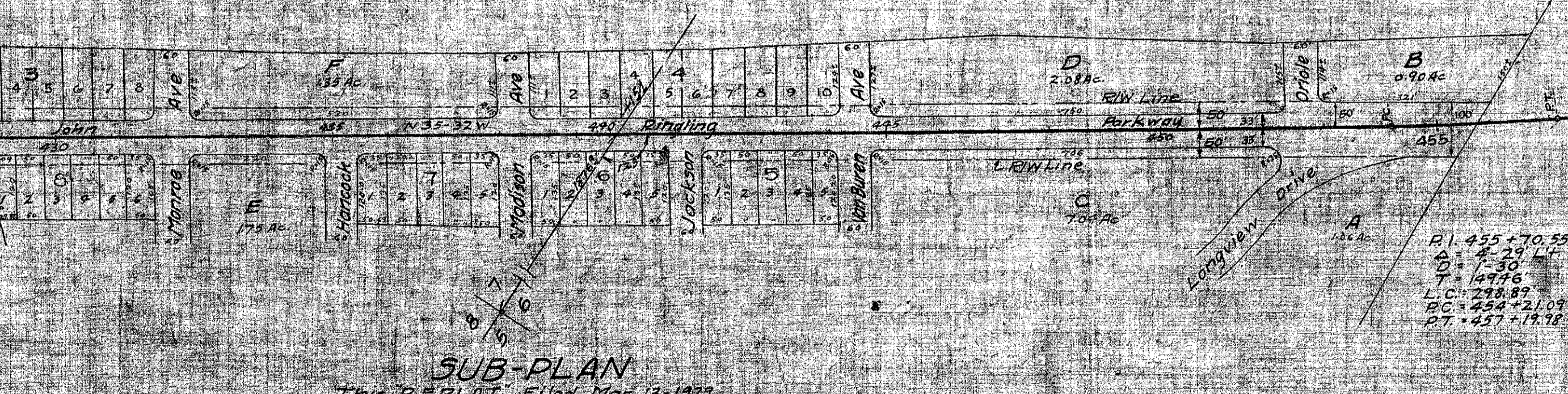
**PRESENT R/W WIDTHS**  
 Sta. 299+04.35 to Sta. 405+90.8 66 FT.  
 Sta. 405+90.8 to Sta. 424+28.95 80 FT.  
 Sta. 424+28.95 to Sta. 499+44.55 66 FT.

**R/W WIDTH REQUIRED**  
 Sta. 299+04.35 to Sta. 499+44.55 100 FT.  
 50' Rf & Lt

**NOTE**  
 Information used in making this R/W Map taken from Court House Records.



**SUB-PLAN**  
**COQUINA BEACH**  
 A Subdivision of Govt. Lot 2, Sec. 7, T. 36 S., R. 17 E., Sarasota County, Fla.  
 Sta. 405+90.8 to 424+28.95



**SUB-PLAN**  
 This REPLAT Filed Mar 13-1927  
**LONGBOAT SHORES**  
 A Subdivision of Govt. Lot 1, Sec. 7 and the NW 1/4 of A.W. 360.5 and all of Lots 3, 5 & 6, Sec. 6, T. 36 S., R. 17 E., Sarasota County, Fla.

The above shows existing alignment as of April 4, 1941.  
*[Signature]*  
 Proj. Eng. of R/W

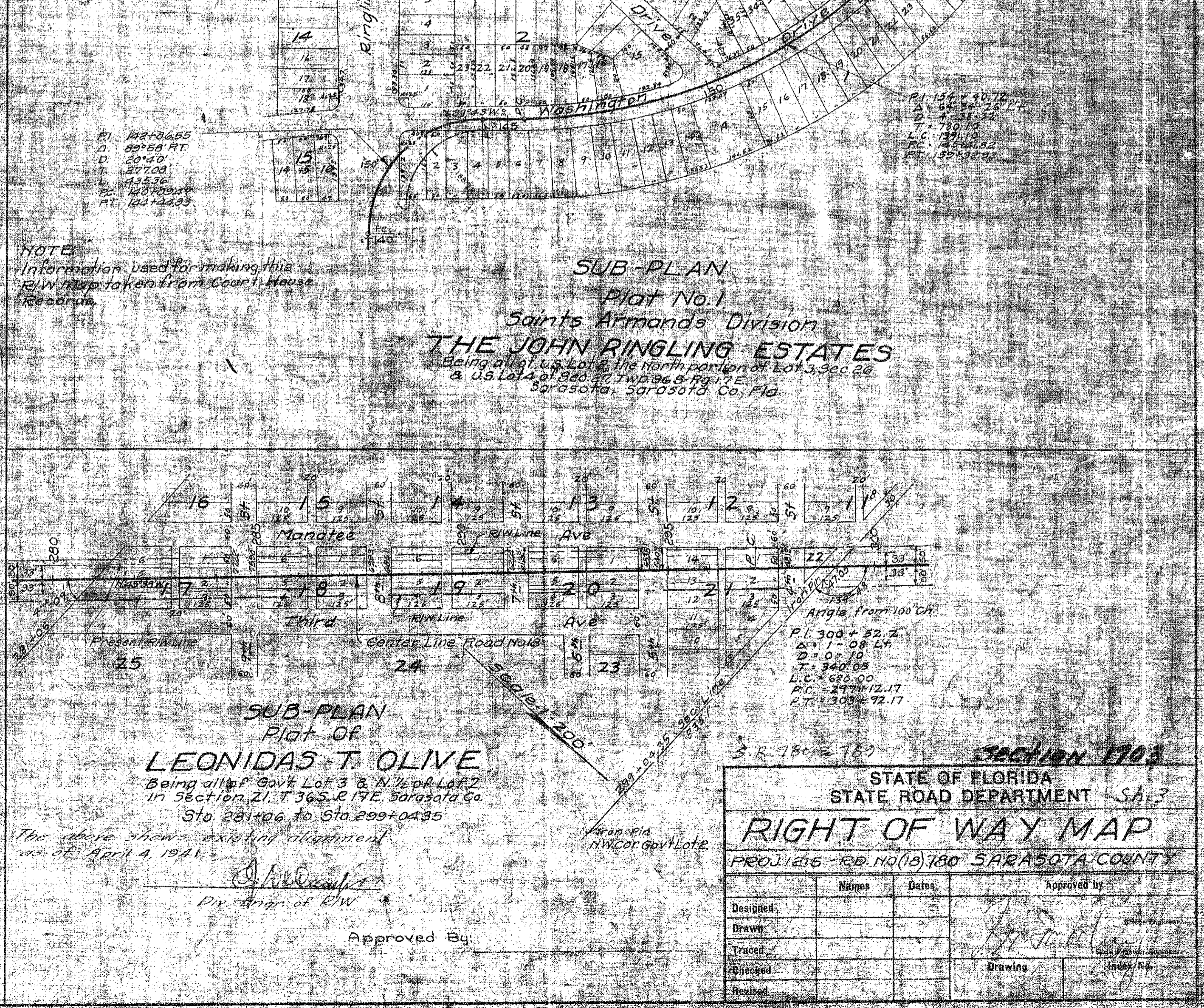
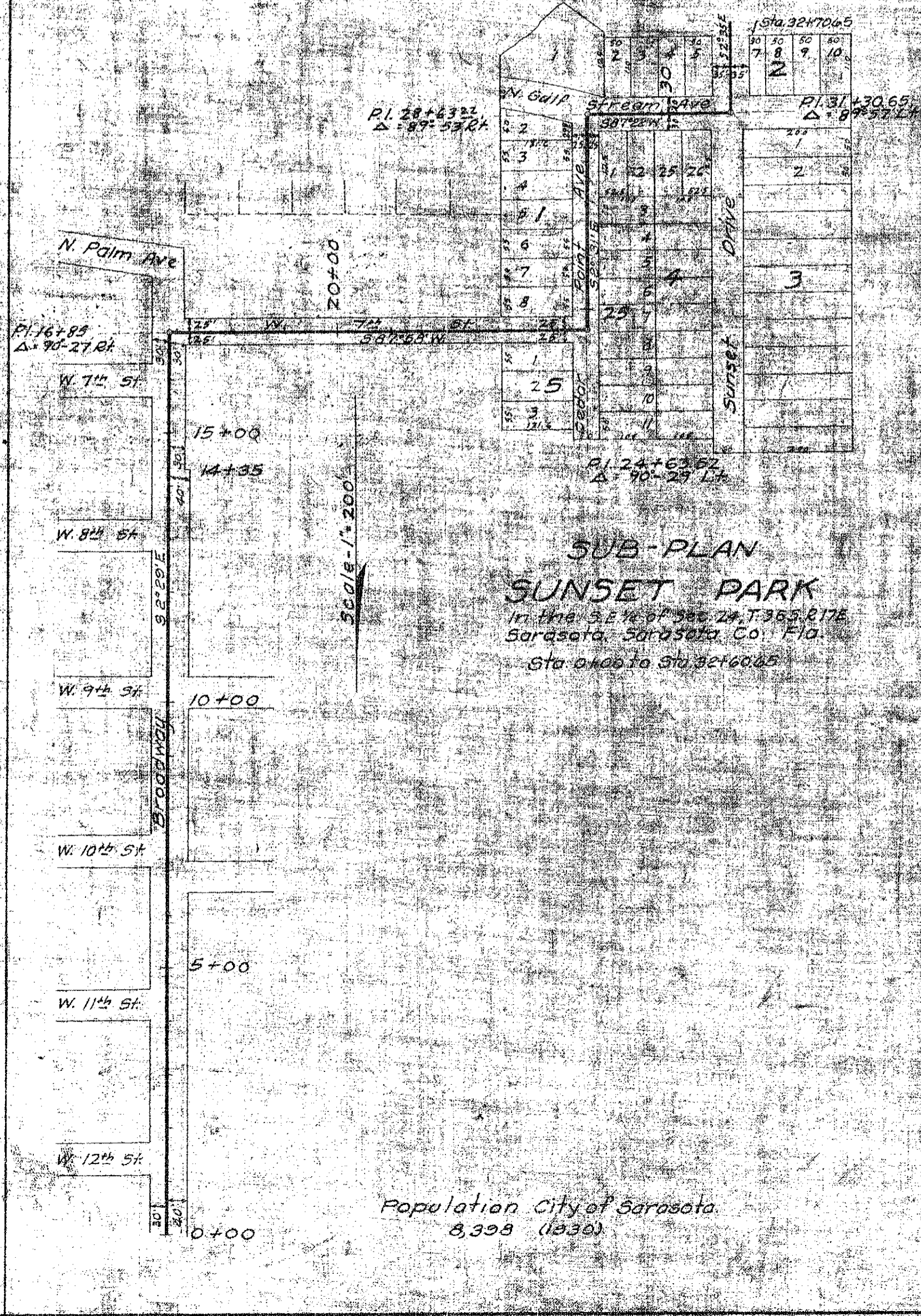
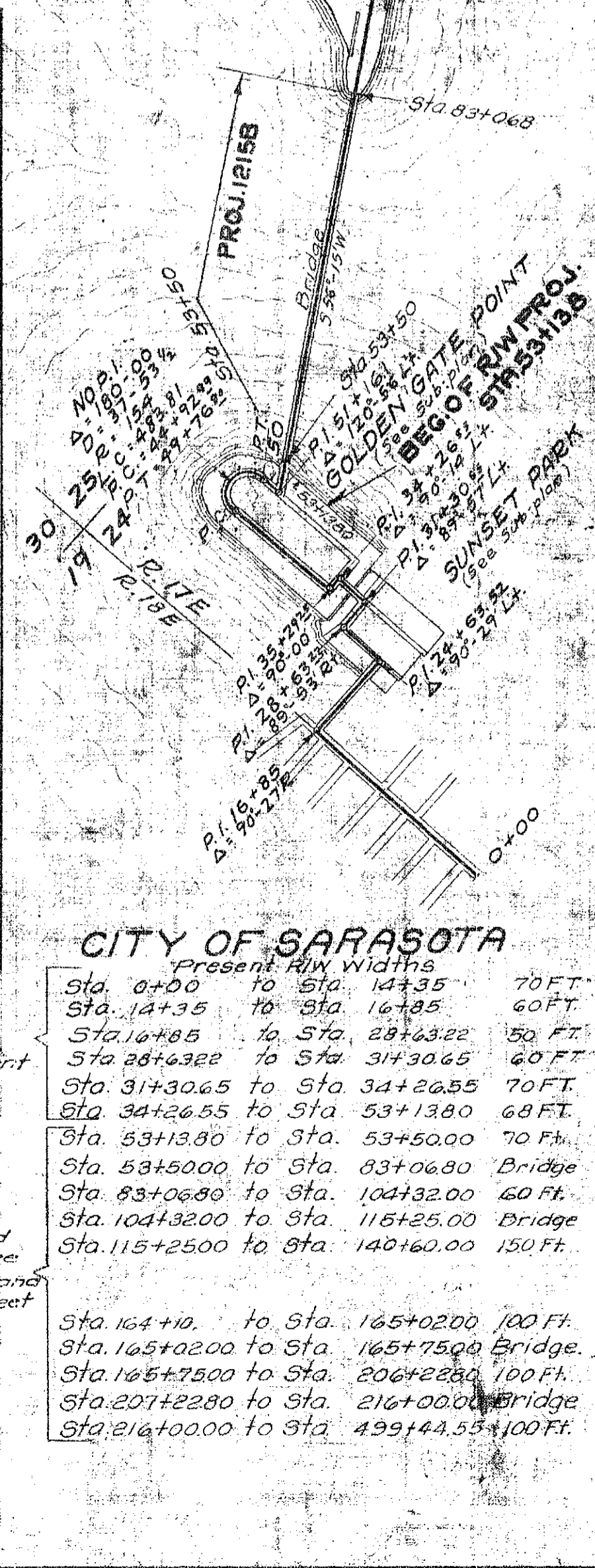
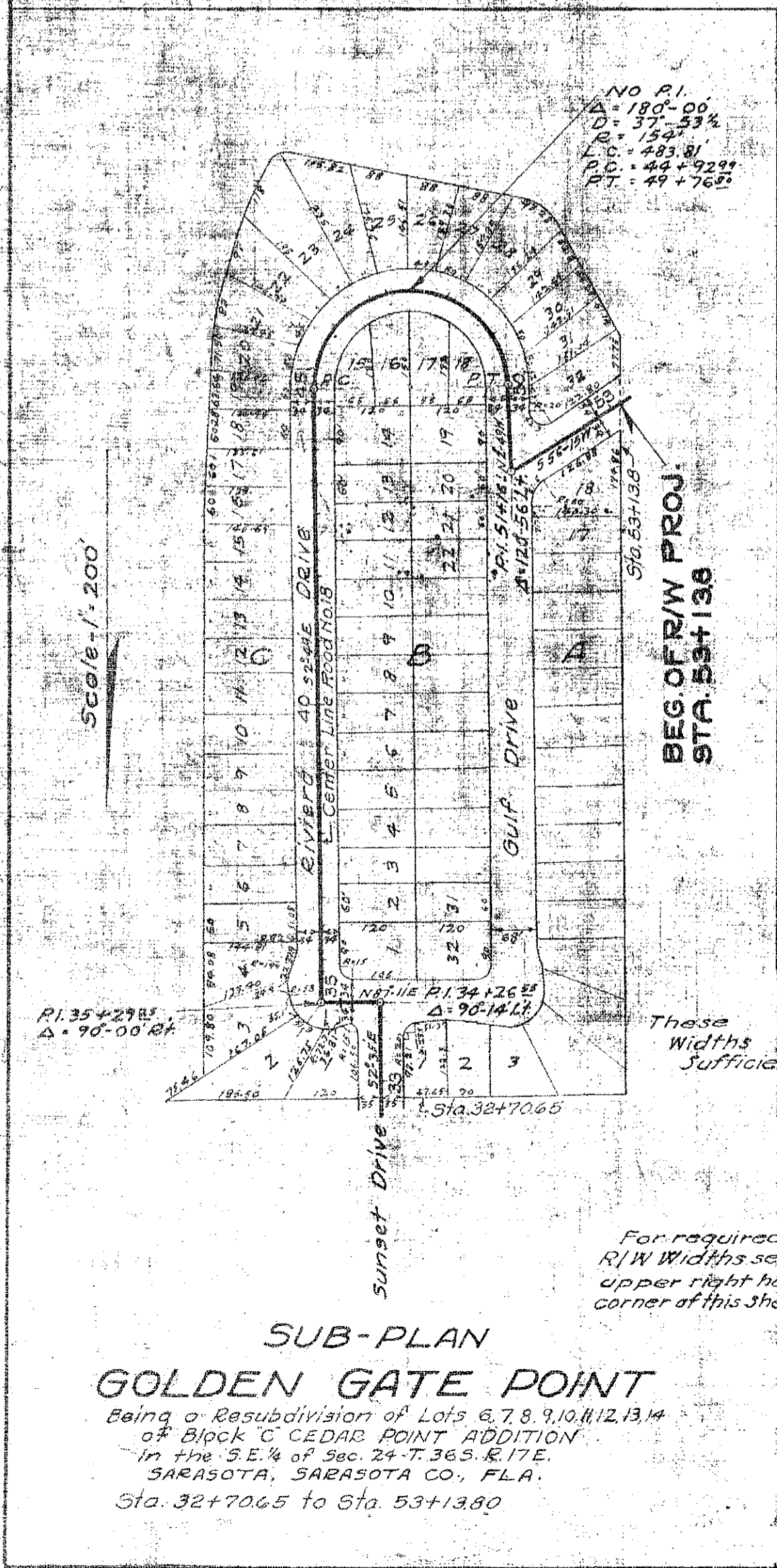
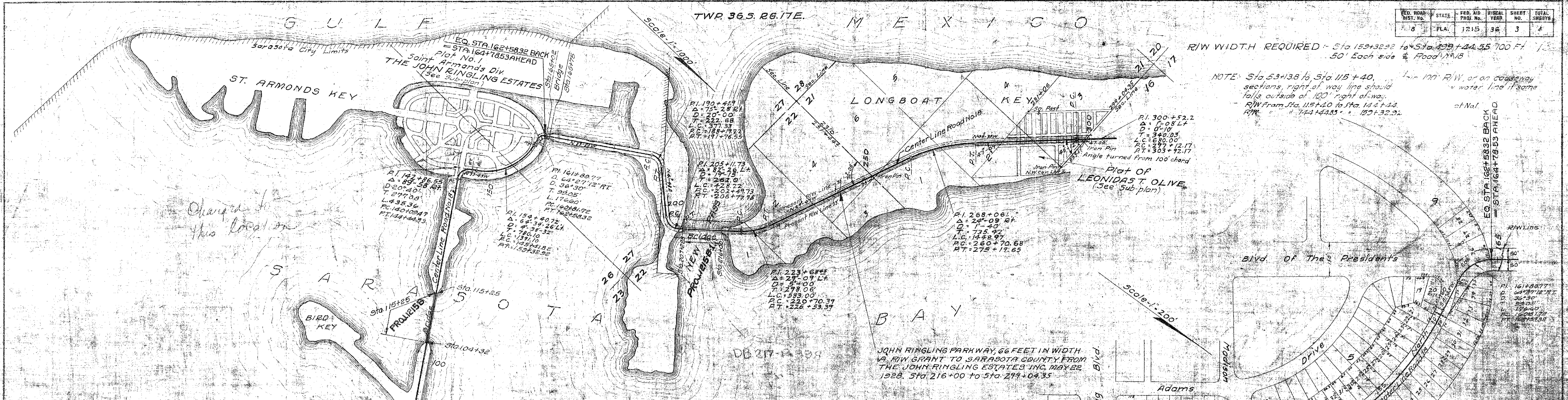
Approved By:

S. R. 789  
 RD 1700 1703

STATE OF FLORIDA  
 STATE ROAD DEPARTMENT 5A.2  
**RIGHT OF WAY MAP**  
 PROJ. 121B ROAD NO. 8 SARASOTA COUNTY

Designated	Name	Date	Approved by
Drawn			
Traced			
Checked			
Revised			

ED. ROAD DIST. NO.	STATE	FED. AID PROJ. NO.	FISCAL YEAR	SHEET NO.	TOTAL SHEETS
8	FLA.	1215	36	3	4



**CITY OF SARASOTA**  
Present R/W Widths

Sta. 0+00 to Sta. 14+35	70 FT.
Sta. 14+35 to Sta. 16+85	60 FT.
Sta. 16+85 to Sta. 29+32.22	50 FT.
Sta. 29+32.22 to Sta. 31+30.65	60 FT.
Sta. 31+30.65 to Sta. 34+20.95	70 FT.
Sta. 34+20.95 to Sta. 53+1380	68 FT.
Sta. 53+1380 to Sta. 53+5000	70 Ft.
Sta. 53+5000 to Sta. 83+0680	Bridge
Sta. 83+0680 to Sta. 104+32.00	60 Ft.
Sta. 104+32.00 to Sta. 115+25.00	Bridge
Sta. 115+25.00 to Sta. 140+60.00	150 Ft.
Sta. 164+10.00 to Sta. 165+0200	100 Ft.
Sta. 165+0200 to Sta. 165+7500	Bridge.
Sta. 165+7500 to Sta. 206+2200	100 Ft.
Sta. 207+2280 to Sta. 216+0000	Bridge
Sta. 216+0000 to Sta. 499+44.55	100 Ft.

For required R/W Widths see upper right hand corner of this sheet

Population City of Sarasota, 8,399 (1939)

STATE OF FLORIDA  
STATE ROAD DEPARTMENT

**RIGHT OF WAY MAP**

PROJ. 1215-100 NO. 10180 SARASOTA COUNTY

Designed	Checked	Dates	Approved by