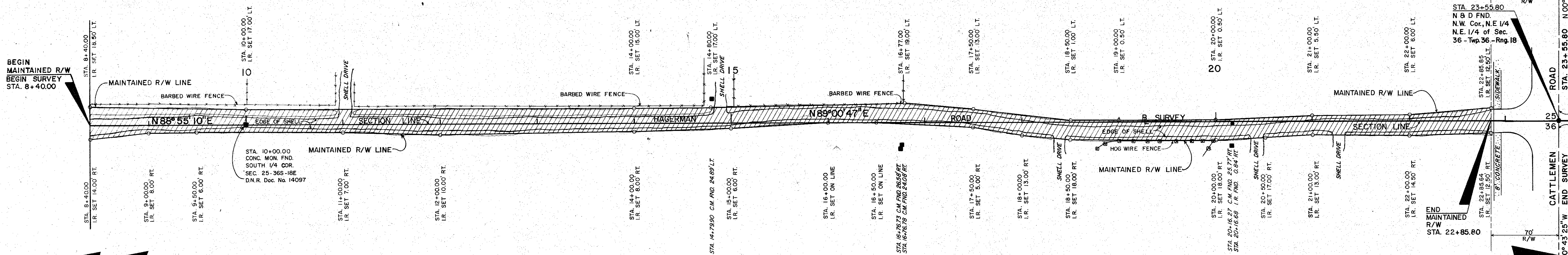


SEC. 25, TWP 36 S, RGE. 18 E.

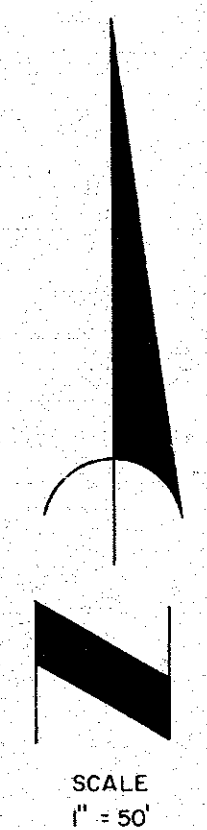
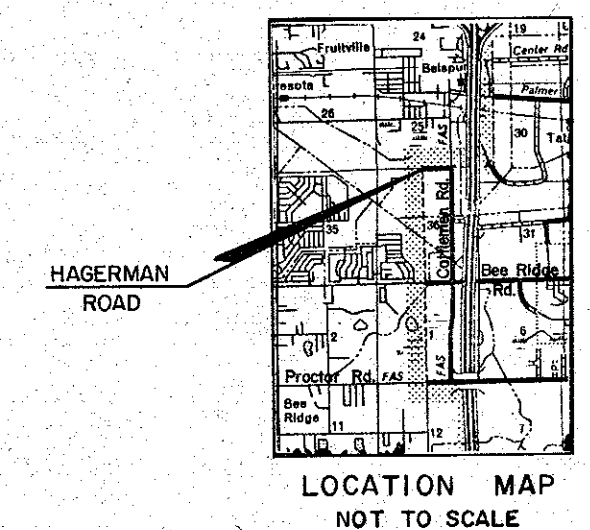
NOT SUBDIVIDED



SEC. 36, TWP 36, RGE. 18 E.

NOT SUBDIVIDED

**SURVEYOR'S NOTE**  
 1. BEARINGS ARE BASED ON THE EAST LINE, SW 1/4, SE 1/4, SEC. 25-36-18, BEING N 00° 45' 03" W AS PER R.P.B. 2, PAGE 56B.



- LEGEND**
- --- Nail & Disk Set
  - --- Nail & Disk Fnd.
  - --- I.R. Set With Red Cap Stamped County R/W PLS 1867
  - --- I.R. Fnd.
  - --- R.R. Spike Set
  - --- R.R. Spike Fnd.
  - △ --- 1" x 2" Hub Set
  - ▲ --- 1" x 2" Hub Fnd.
  - --- Conc. Mon. Set
  - --- Conc. Mon. Fnd.
  - ⊠ --- Water Valve
  - ⊞ --- Utility Pole
  - ⊕ --- G.T. & TV Cable Box
  - ⊙ --- G.T. Manhole
  - ⊖ --- Light Pole
  - ⊗ --- Fire Hydrant
  - ⊘ --- Giv Wire

**SURVEYOR'S CERTIFICATE**

I HEREBY CERTIFY THAT THIS MAINTAINED R/W MAP REPRESENTS A BOUNDARY SURVEY OF THE ROAD AS SHOWN, THAT THE SURVEY WAS RECENTLY PERFORMED UNDER MY DIRECTION, AND THAT IT IS TRUE AND CORRECT TO THE BEST OF MY KNOWLEDGE AND BELIEF, AND THAT IT MEETS THE MINIMUM TECHNICAL STANDARDS FOR LAND SURVEYING IN THE STATE OF FLORIDA (CH. 211H-6, F.A.C.) EFFECTIVE SEPT. 1, 1981.

DATE OF SURVEY: MARCH 9, 1987

*E.R. Emerson*  
 E. R. EMERSON, COUNTY SURVEYOR  
 PROFESSIONAL LAND SURVEYOR NO. 1867  
 STATE OF FLORIDA  
 1301 CATTLEMEN ROAD  
 SARASOTA, FLORIDA 33582

3-11-87  
 DATE

THIS IS TO CERTIFY THAT THE NUMBERED SHEET ONE (1) OF ONE (1) CONSTITUTES THE OFFICIAL MAINTENANCE MAP SHOWING THE LOCATION AND SURVEY BY THE SARASOTA COUNTY, FLORIDA, TRANSPORTATION DEPARTMENT FOR HAGERMAN ROAD, FROM THE WEST R/W LINE OF CATTLEMEN ROAD, WESTERLY FOR 1446'. ALL BEING IN SECTIONS 25 AND 36, TOWNSHIP 36 S., RANGE 18 E., SARASOTA COUNTY, FLORIDA. THE PROPERTY SHOWN CROSS-HATCHED ON THIS MAP HAS BEEN VESTED IN SARASOTA COUNTY, FLORIDA, PURSUANT TO THE PROVISIONS OF CHAPTER 95.361, FLORIDA STATUTES OF 1985.

ACCEPTED FOR FILES AND RECORDED IN THE PUBLIC RECORDS OF SARASOTA COUNTY, FLORIDA, THIS 23 DAY OF JUNE, A.D. 1987, IN ROAD PLAT BOOK 3 PAGE 22.

*Karen E. Rushing*  
 CLERK OF THE CIRCUIT COURT  
 SARASOTA COUNTY, FLORIDA

THIS IS TO CERTIFY THAT THIS MAINTAINED MAP WAS APPROVED BY RESOLUTION NO. 23-1987 PASSED AND ADOPTED BY THE BOARD OF COUNTY COMMISSIONERS OF SARASOTA COUNTY, FLORIDA, ON THE 23 DAY OF JUNE, A.D. 1987.

BOARD OF COUNTY COMMISSIONERS OF SARASOTA COUNTY, FLORIDA BY:

*Maby Carleton*  
 CHAIRMAN

ATTEST:  
 R.H. HACKNEY JR., CLERK OF THE CIRCUIT COURT AND EX-OFFICIO CLERK OF THE BOARD OF COUNTY COMMISSIONERS OF SARASOTA COUNTY, FLORIDA BY:

*James A. Hopkins*  
 DEPUTY CLERK

THIS IS TO CERTIFY THAT THE LIMITS OF THE ROADWAY AS SHOWN CROSS-HATCHED HEREON, HAS BEEN MAINTAINED CONTINUOUSLY FOR OVER FOUR (4) YEARS WITHOUT INTERRUPTION.

*Paul Kopytke*  
 SUPERINTENDENT  
 ROAD & BRIDGE DIVISION  
 3-12-87  
 DATE

SARASOTA COUNTY TRANSPORTATION DEPARTMENT  
 ENGINEERING DIVISION, CADASTRAL SECTION

**MAINTAINED RIGHT OF WAY MAP**  
 HAGERMAN ROAD  
 CATTLEMEN ROAD TO WEST 1446'

BY	DATE	SURVEY	DATE
PJB	12-24-86	<i>E.R. Emerson</i>	3-11-87
CHECKED	R.P.B.	<i>Paul Kopytke</i>	6-10-87
COMPARED	K.C.W.	<i>E.R. Emerson</i>	6/1/87
REF	FB. 308/43 & 57-62 R.P.B. 2/56	TRANSPORTATION DIRECTOR	DATE

SCALE 1" = 50' PROJECT NO. 86099 SHEET 1 OF 1