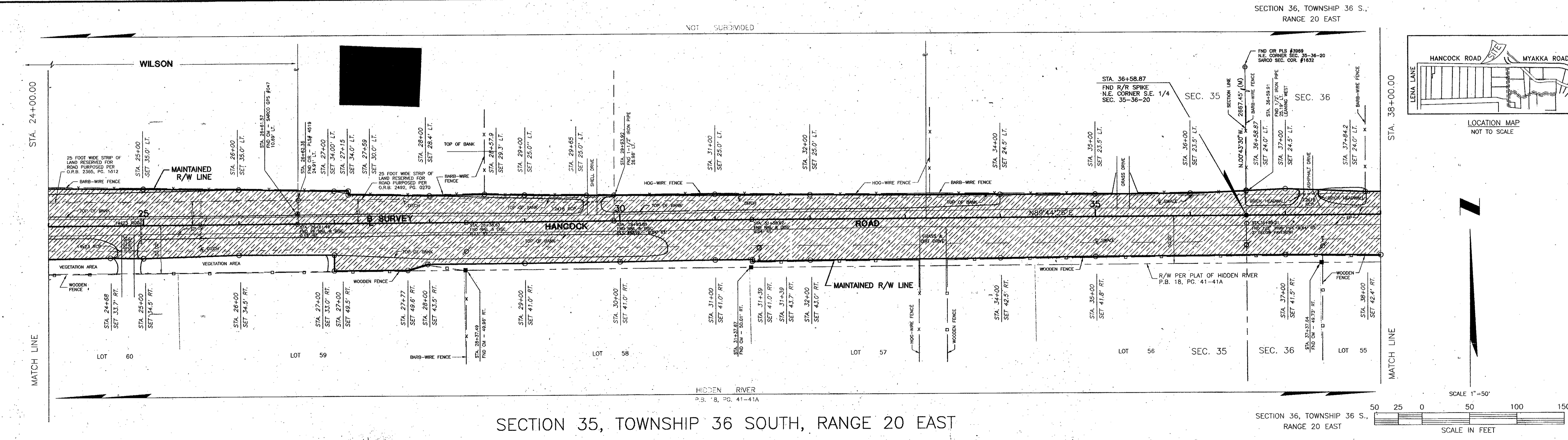
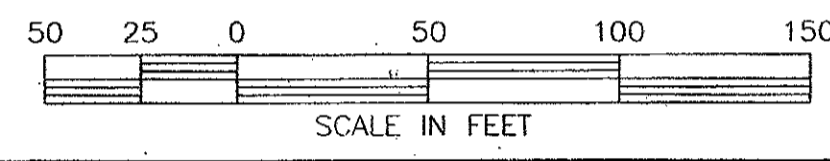
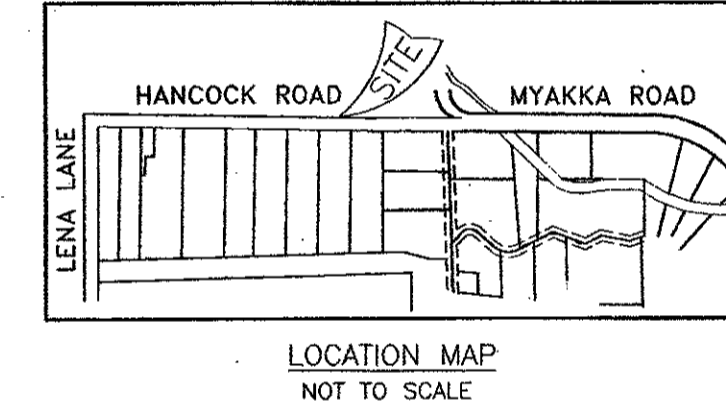
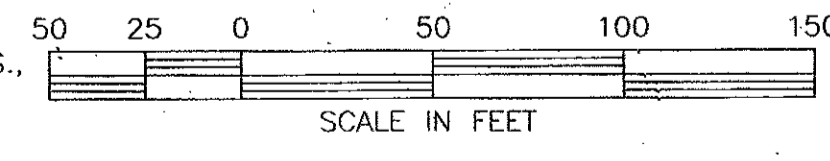


FILED FOR RECORD
 97 JUL -2 PM 3:01
 KAREN E. RUSHING
 CLERK OF CIRCUIT COURT
 SARASOTA COUNTY, FL

SECTION 35, TOWNSHIP 36 SOUTH, RANGE 20 EAST



SECTION 36, TOWNSHIP 36 SOUTH, RANGE 20 EAST



THIS IS TO CERTIFY THAT THE NUMBERED SHEETS ONE (2) OF TWO (2) CONSTITUTES THE OFFICIAL MAINTENANCE MAP SHOWING THE LOCATION AND SURVEY BY THE SARASOTA COUNTY, FLORIDA TRANSPORTATION DEPARTMENT FOR HANCOCK ROAD, LYING BETWEEN LENA LANE AND MYAKKA ROAD, ALL BEING IN SECTION 35, TOWNSHIP 36 SOUTH, RANGE 20 EAST, SARASOTA COUNTY, FLORIDA, PURSUANT TO THE PROVISIONS OF CHAPTER 95.361, FLORIDA STATUTES OF 1991.

FILED FOR RECORD IN ROAD PLAT BOOK 4 AT PAGE 14 OF THE PUBLIC RECORDS OF SARASOTA COUNTY, FLORIDA, THIS 2nd DAY OF July A.D. 1997.

KAREN E. RUSHING
 CLERK OF THE CIRCUIT COURT
 SARASOTA COUNTY, FLORIDA

BY: *Clairne M. Hamel*
 DEPUTY CLERK

THIS IS TO CERTIFY THAT THIS MAINTAINED MAP WAS APPROVED BY RESOLUTION NO. 95-277, PASSED AND ADOPTED BY THE BOARD OF COUNTY COMMISSIONERS OF SARASOTA COUNTY, FLORIDA ON THE 24th DAY OF November, A.D. 1995.

Dante Mills
 HURMAN

ATTEST:
 KAREN E. RUSHING CLERK OF THE CIRCUIT COURT AND EX-OFFICIO CLERK OF THE BOARD OF COUNTY COMMISSIONERS OF SARASOTA COUNTY, FLORIDA BY:

DEPUTY CLERK *Susan Kay Garland*

THIS IS TO CERTIFY THAT THE LIMITS OF THE ROADWAY SHOWN CROSS-HATCHED HEREON, HAS BEEN MAINTAINED CONTINUOUSLY FOR OVER FOUR (4) YEARS WITHOUT INTERRUPTION.

John Farris
 JOHN FARRIS
 AREA SUPERINTENDENT
 HIGHWAY MAINTENANCE

SURVEYOR'S CERTIFICATE

I HEREBY CERTIFY THAT THIS MAINTAINED RIGHT-OF-WAY MAP (SHEET 2 OF 2) REPRESENTS A SURVEY OF THE ROAD ALIGNMENT AS SHOWN HEREON, THAT THE SURVEY WAS RECENTLY PERFORMED UNDER MY DIRECTION, THAT IT IS TRUE AND CORRECT TO THE BEST OF MY KNOWLEDGE AND BELIEF AND THAT THE SURVEY MEETS THE MINIMUM TECHNICAL STANDARDS AS SET FORTH BY THE FLORIDA BOARD OF PROFESSIONAL LAND SURVEYORS IN CHAPTER 61 G 17, F.A.C. PURSUANT TO SECTION 472.027, F.S.

DATE OF SURVEY: 4-30-94
 DATE MONUMENTS SET: 7-14-94

Sam Fossess
 G.M. FOSSESS, COUNTY SURVEYOR
 PROFESSIONAL SURVEYOR NO. 4149
 STATE OF FLORIDA
 1301 CATTLEMAN ROAD
 SARASOTA, FLORIDA 34232-9631

DATE: 8-15-95

SURVEYOR'S NOTES

- BEARINGS SHOWN HEREON ARE BASED ON THE HIDDEN RIVER SUBDIVISION, ACCORDING TO THE PLAT THEREOF RECORDED IN PLAT BOOK 18, PAGE 41-41A OF THE PUBLIC RECORDS OF SARASOTA COUNTY, FLORIDA, BEARING BEING THE NORTH LINE OF HIDDEN RIVER SUBDIVISION, N 89°44'26"E.
- A CHANGE OR JOG ON THE MAINTAINED RIGHT-OF-WAY LINE IS NOT NECESSARILY LOCATED AT AN INTERSECTING PROPERTY LINE.
- ALL UNDERGROUND FACILITIES NOT LOCATED.

LEGEND

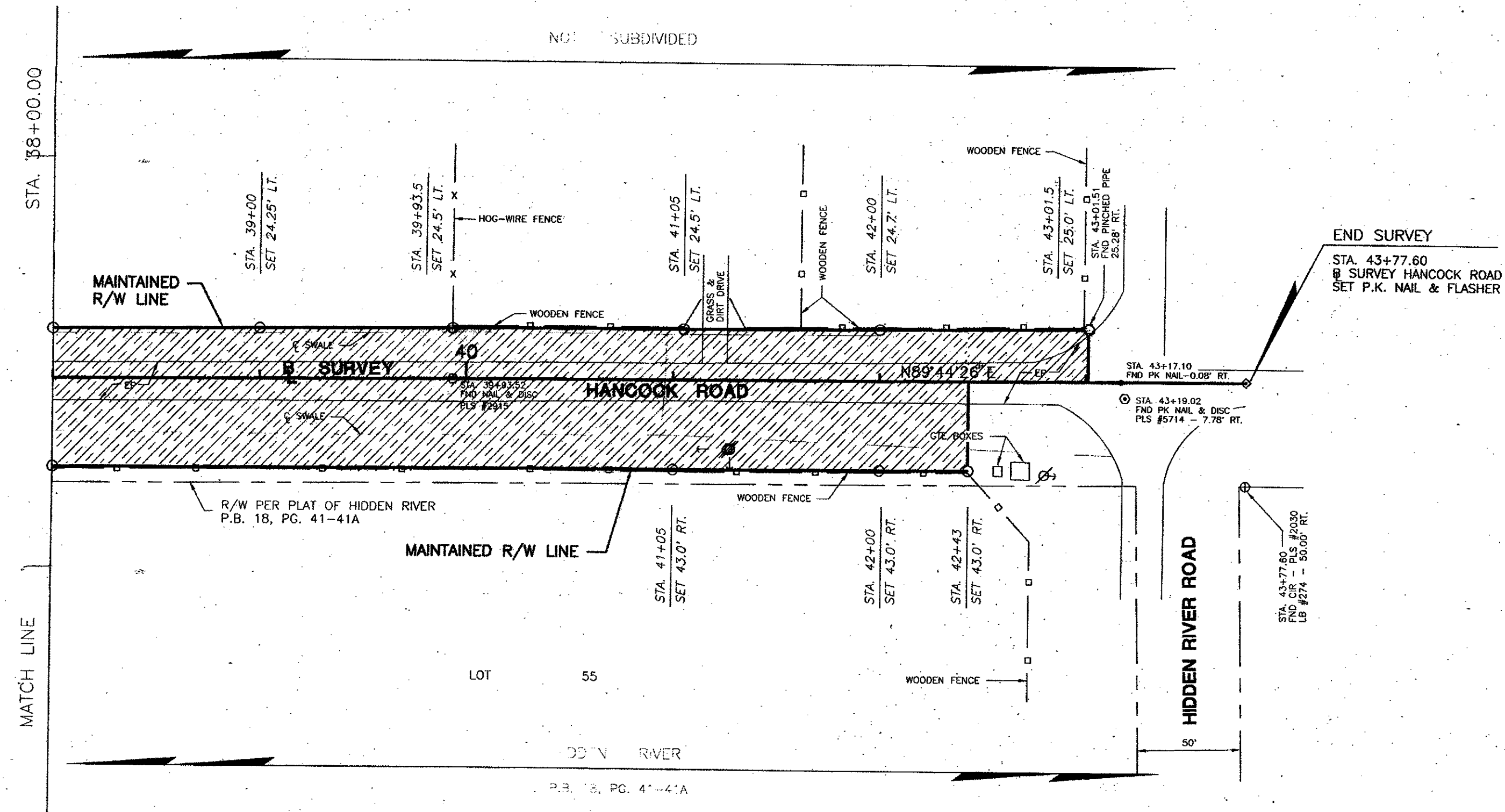
- = IRON ROD TO BE SET WITH RED CAP STAMPED COUNTY P.L.S. NO. 4149
- ⊕ = POWER POLE
- ⊖ = G.T.E. BOX

LEGEND OF ABBREVIATIONS

- B = BASELINE
- CHP. = CHAPTER
- C = CENTERLINE
- C.M.P. = CORRUGATED METAL PIPE
- CO. = COUNTY
- COR. = CORNER
- D.B. = DEED BOOK
- D.N.R. = DEPARTMENT OF NATURAL RESOURCES
- D.O.T. = DEPARTMENT OF TRANSPORTATION
- DRAIN. = DRAINAGE
- EASE. = EASEMENT
- F.A.C. = FLORIDA ADMINISTRATIVE CODE
- F.B. = FIELD BOOK
- FND. = FOUND
- F.P. & L. = FLORIDA POWER AND LIGHT
- G.T.E. = GENERAL TELEPHONE
- I.P. = IRON PIPE
- F.S. = FLORIDA STATUTES
- O.R.B. = OFFICIAL RECORDS BOOK
- P.B. = PLAT BOOK
- P.I. = POINT OF INTERSECTION
- P.L.S. = PROFESSIONAL LAND SURVEYOR
- R.C.P. = REINFORCED CONCRETE PIPE
- REF. = REFERENCE
- RNG. = RANGE
- R.P.B. = ROAD PLAT BOOK
- R/W = RIGHT-OF-WAY
- SEC. = SECTION
- S.R. = STATE ROAD
- STA. = STATION
- SUB. = SUBDIVISION
- TWP. = TOWNSHIP
- I.R. = IRON ROD
- MON. = MONUMENT
- M/R/W = MAINTAINED RIGHT-OF-WAY
- N. & D. = NAIL AND DISC

SARASOTA COUNTY TRANSPORTATION DEPARTMENT ENGINEERING DIVISION - SURVEY - MAPPING SECTION			
MAINTAINED RIGHT-OF-WAY SURVEY			
HANCOCK ROAD LENA LANE TO MYAKKA ROAD			
DRAWN	BY	DATE	
T.S.A.	<i>J. J. ...</i>	5-19-94	8-15-95
CHECKED	<i>U.A.</i>	8-9-95	8-15-95
COMPARED	<i>J.R.J.</i>	8-21-95	8-15-95
REF.	F.B. 385, PG. 1-16		
SCALE	PROJECT NO.	JOB NO.	SHEET
1" = 50'	92017	0405	1 OF 2

R.C.C. R.F.S.O 95-271 O.R.B.2893 , PG.934



SECTION 36, TOWNSHIP 36 SOUTH, RANGE 20 EAST

FILED FOR RECORD
97 JUL -2 PM 3:01
KAREN E. RUSHING
CLERK OF CIRCUIT COURT
SARASOTA COUNTY, FL

- LEGEND OF ABBREVIATIONS**
- B = BASELINE
 - CHP. = CHAPTER
 - C = CENTERLINE
 - C.M.P. = CORRUGATED METAL PIPE
 - CO. = COUNTY
 - COR. = CORNER
 - D.B. = DEED BOOK
 - D.N.R. = DEPARTMENT OF NATURAL RESOURCES
 - D.O.T. = DEPARTMENT OF TRANSPORTATION
 - DRAIN. = DRAINAGE
 - EASE. = EASEMENT
 - F.A.C. = FLORIDA ADMINISTRATIVE CODE
 - F.B. = FIELD BOOK
 - FND. = FOUND
 - F.P. & L. = FLORIDA POWER AND LIGHT
 - G.T.E. = GENERAL TELEPHONE ELECTRIC
 - I.P. = IRON PIPE
 - O.R.B. = OFFICIAL RECORDS BOOK
 - P.B. = PLAT BOOK
 - P.I. = POINT OF INTERSECTION
 - P.L. = PROPERTY LINE
 - P.L.S. = PROFESSIONAL LAND SURVEYOR
 - R.C.P. = REINFORCED CONCRETE PIPE
 - REF. = REFERENCE
 - RNG. = RANGE
 - R.P.B. = ROAD PLAT BOOK
 - R/W = RIGHT-OF-WAY
 - SEC. = SECTION
 - S.R. = STATE ROAD
 - STA. = STATION
 - SUB. = SUBDIVISION
 - TWP. = TOWNSHIP
 - I.R. = IRON ROD
 - MON. = MONUMENT
 - M/R/W = MAINTAINED RIGHT-OF-WAY
 - N. & D. = NAIL AND DISC

- LEGEND**
- = IRON ROD TO BE SET WITH RED CAP STAMPED COUNTY P.L.S. NO. 4149
 - ⊕ = POWER POLE
 - = G.T.E. BOX

SARASOTA COUNTY TRANSPORTATION DEPARTMENT ENGINEERING DIVISION - SURVEY - MAPPING - SECT. 0A			
MAINTAINED RIGHT-OF-WAY SURVEY			
HANCOCK ROAD LENA LANE TO MYAKKA ROAD			
BY	DATE		
T.S.O.	5-19-94		
CHECKED	A.A. 8-7-95		
COMPARED	J.R.T. 8-21-95		
REF.	F.B. 385, PG. 1-16		
SCALE	1" = 50'	PROJECT NO.	92017
		JOB NO.	0405
		SHEET	2 OF 2