

NOTES:
 1. BEARINGS SHOWN HEREON ARE BASED ON THE SOUTH LINE OF THE NORTH 1/2 OF SECTION 18, TOWNSHIP 36 SOUTH, RANGE 19 EAST, BEING N.88°38'11"E.
 2. A CHANGE OR JOG ON THE MAINTAINED RIGHT-OF-WAY LINE IS NOT NECESSARILY LOCATED AT AN INTERSECTING PROPERTY LINE.
 3. IMPROVEMENTS SUCH AS BUT NOT LIMITED TO UNDERGROUND UTILITIES, LANDSCAPE FEATURES, ETC., HAVE NOT BEEN LOCATED EXCEPT AS SHOWN.

THIS IS TO CERTIFY THAT THE NUMBERED SHEETS ONE THRU FIVE (1-5) OF FIVE (5) CONSTITUTES THE OFFICIAL MAINTENANCE MAP SHOWING THE LOCATION AND SURVEY BY WILSON, MILLER, BARTON & PEEK, INC. FOR HAWKINS ROAD, BEING IN SECTIONS 16, 17 & 18, TOWNSHIP 37 SOUTH, RANGE 19 EAST, SARASOTA COUNTY, FLORIDA PURSUANT TO THE PROVISIONS OF CHAPTER 95.361, FLORIDA STATUTES OF 1991.

FILED FOR RECORD IN ROAD PLAT BOOK 4 AT PAGE 13 OF THE PUBLIC RECORDS OF SARASOTA COUNTY, FLORIDA, THIS DAY OF July, A.D. 1997.

KAREN E. RUSHING
 CLERK OF CIRCUIT COURT
 SARASOTA COUNTY, FLORIDA

By: *Clair M. Hamel*
 DEPUTY CLERK

THIS IS TO CERTIFY THAT THIS MAINTAINED MAP WAS APPROVED BY RESOLUTION NO. 07-112 PASSED AND ADOPTED BY THE BOARD OF COUNTY COMMISSIONERS OF SARASOTA COUNTY, FLORIDA ON THE 27th DAY OF MAY, A.D. 1997.

By: *Karen E. Rushing*
 CHAIRMAN

ATTEST:
 KAREN E. RUSHING, CLERK OF THE CIRCUIT COURT AND EX-OFFICIO CLERK OF THE BOARD OF COUNTY COMMISSIONERS OF SARASOTA COUNTY, FLORIDA.

By: *Susan Kay Garland*
 DEPUTY CLERK

THIS IS TO CERTIFY THAT THE LIMITS OF THE ROADWAY OUTSIDE OF PLATTED RIGHT-OF-WAYS (AS SHOWN CROSS-HATCHED HEREON) HAVE BEEN MAINTAINED CONTINUOUSLY FOR OVER FOUR (4) YEARS.

By: *David L. Stone P.E.*
 DEPUTY TRANS DIRECTOR
 OPERATIONS

- SYMBOL LEGEND**
- = SET CAPPED IRON ROD "COUNTY R/W PLS#3924"
 - = FOUND 4" CONCRETE MONUMENT (NO NUMBER UNLESS NOTED)
 - = IRON PIPE FOUND
 - = PK NAIL & DISK FOUND (NO NUMBER UNLESS NOTED)
 - ⊕ = POWER POLE
 - ⊕ = GUY ANCHOR
 - ⊕ = TELEPHONE RISER
 - ⊕ = SIGN
 - ⊕ = MAIL BOX
 - ⊕ = BARB WIRE FENCE
 - = WOOD OR CHAIN LINK FENCE (AS LABELED)
 - = MAINTAINED R/W
 - = ♀ OF SWALE
 - --- --- = OVERHEAD UTILITY LINES
 - --- --- = SECTION LINE
 - ⊕ = LIGHT POLE
 - ▨ = MAINTAINED AREAS
 - ▨ = PAVEMENT

- ABBREVIATION LEGEND**
- R/W = RIGHT-OF-WAY
 - P.B. = PLAT BOOK
 - FND = FOUND
 - PG. = PAGE
 - SEC. = SECTION
 - TWP. = TOWNSHIP
 - RGE. = RANGE
 - M = MEASURED
 - NO. = NUMBER
 - L = LEFT
 - R = RIGHT
 - P = PLAT
 - STA = STATION
 - M/R/W = MAINTAINED RIGHT-OF-WAY
 - SARCO = SARASOTA COUNTY
 - F.A.C. = FLORIDA ADMINISTRATIVE CODE
 - F.S. = FLORIDA STATUTES
 - ⊕ = CENTERLINE
 - P.S.M. = PROFESSIONAL SURVEYOR AND MAPPER
 - P.L.S. = PROFESSIONAL LAND SURVEYOR
 - DOC. = DOCUMENT
 - CONC. = CONCRETE
 - ELEV. = GROUND ELEVATION
 - BM = BENCHMARK
 - LB = LAND BOARD

I HEREBY CERTIFY THAT THIS R/W MAP (SHEETS 1 THRU 5) REPRESENTS A SURVEY OF THE ROAD ALIGNMENT AS SHOWN HEREON, THAT THE SURVEY WAS RECENTLY PERFORMED UNDER MY DIRECTION, AND THAT IT IS TRUE AND CORRECT TO THE BEST OF MY KNOWLEDGE AND BELIEF, AND THAT THE SURVEY MEETS THE MINIMUM TECHNICAL STANDARDS AS SET FORTH BY THE FLORIDA BOARD OF PROFESSIONAL SURVEYING & MAPPING IN CHAPTER 61G17.6, F.A.C. PURSUANT TO SECTION 472.027, F.S.

DATE OF SURVEY: 3/14/97
 DATE MONUMENTS SET: 2/10/97

ROBERT R. CUNNINGHAM, P.S.M.
 PROFESSIONAL SURVEYOR AND MAPPER NO. 3924
 WILSON, MILLER, BARTON & PEEK, INC.
 133 SOUTH MONTOSH ROAD
 SARASOTA, FLORIDA 34232

SARASOTA COUNTY TRANSPORTATION DEPARTMENT
 ENGINEERING DIVISION - SURVEY - MAPPING SECTION

MAINTAINED RIGHT-OF-WAY MAP
 HAWKINS ROAD
 INTERSTATE 75 EAST TO STATE ROAD 72 (CLARK ROAD)

DRAWN	JHF	DATE	1/97
CHECKED	RRC	DATE	5-8-97
COMPARED	WJ	DATE	5-9-97

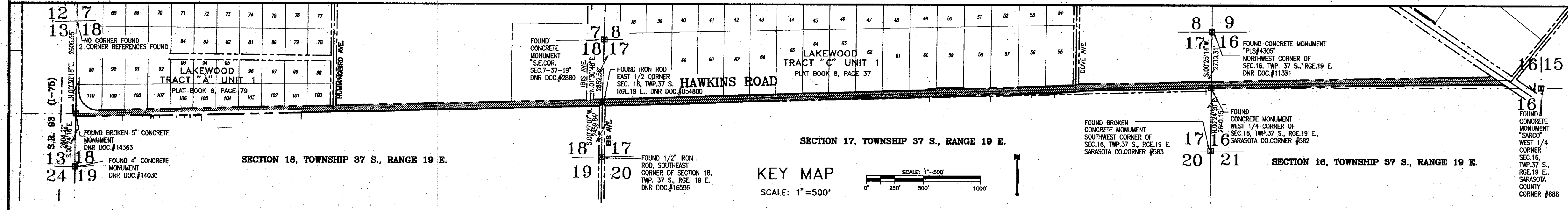
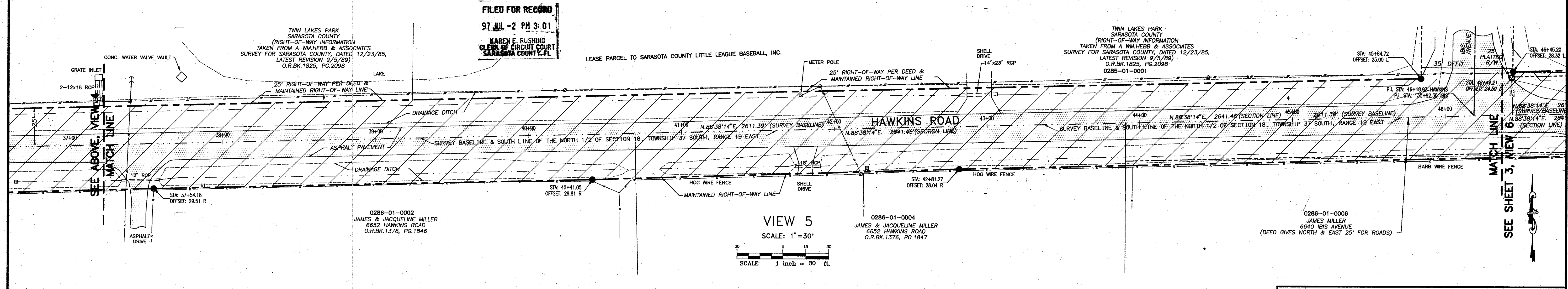
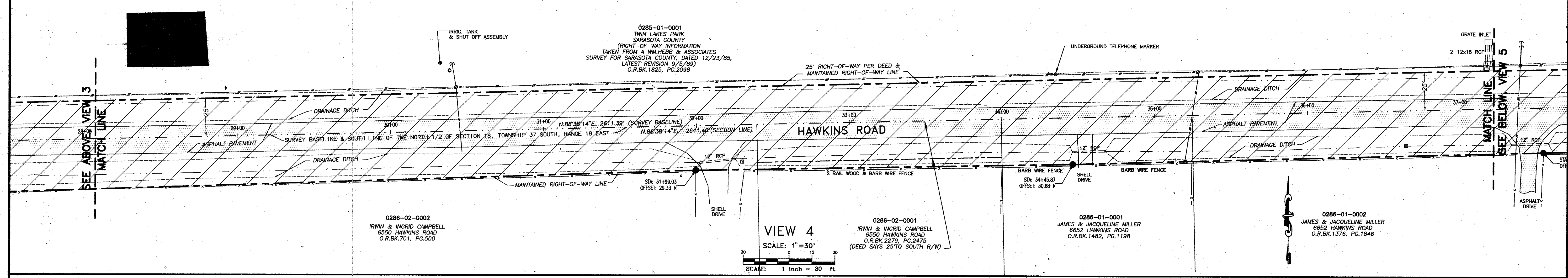
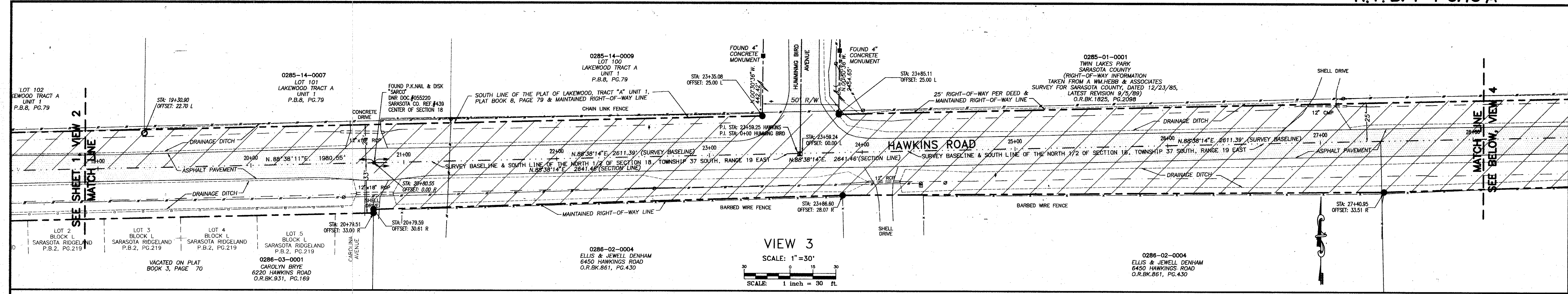
REF. F.B.142, PG.146

SCALE: 1" = 30'

PROJECT NO. 2338-011-011

SHEET 1 OF 5

B.C.C. RESO. 97-112 OR.B. 2976 PG. 2305



SARASOTA COUNTY TRANSPORTATION DEPARTMENT
ENGINEERING DIVISION - SURVEY - MAPPING SECTION

MAINTAINED RIGHT-OF-WAY MAP

HAWKINS ROAD
INTERSTATE 75 EAST TO STATE ROAD 72 (CLARK ROAD)

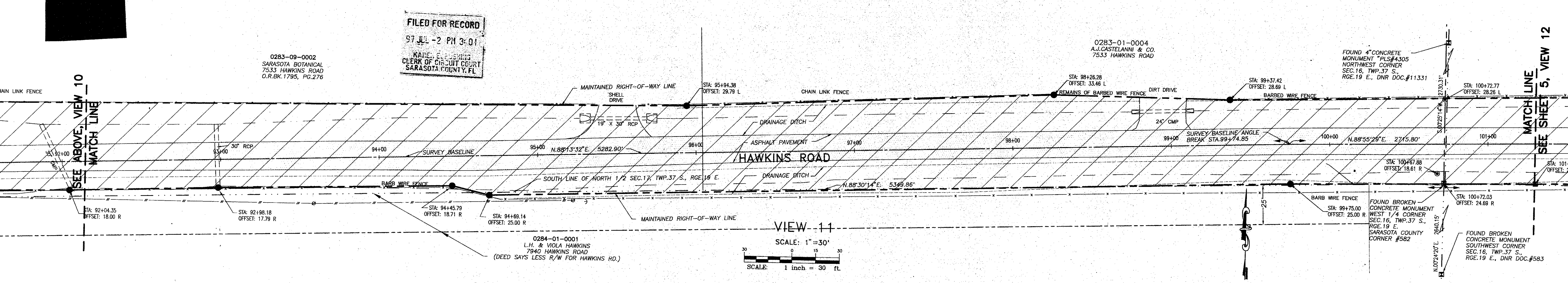
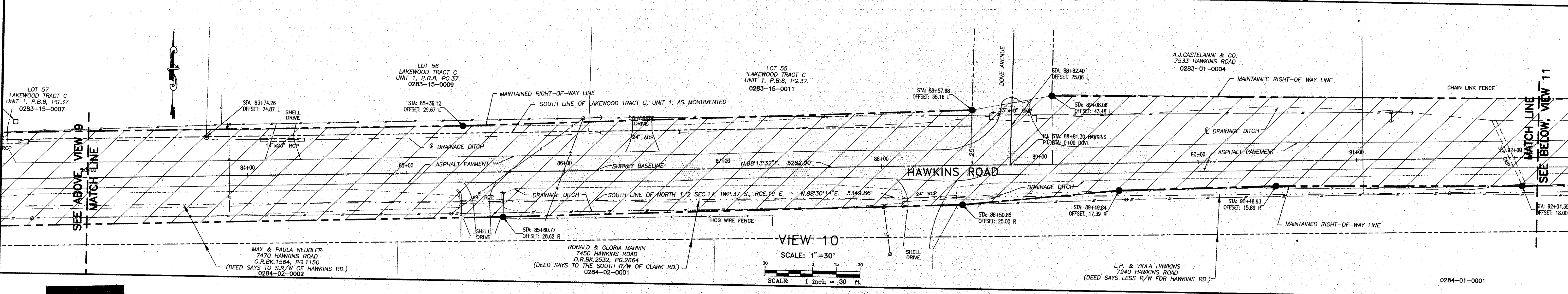
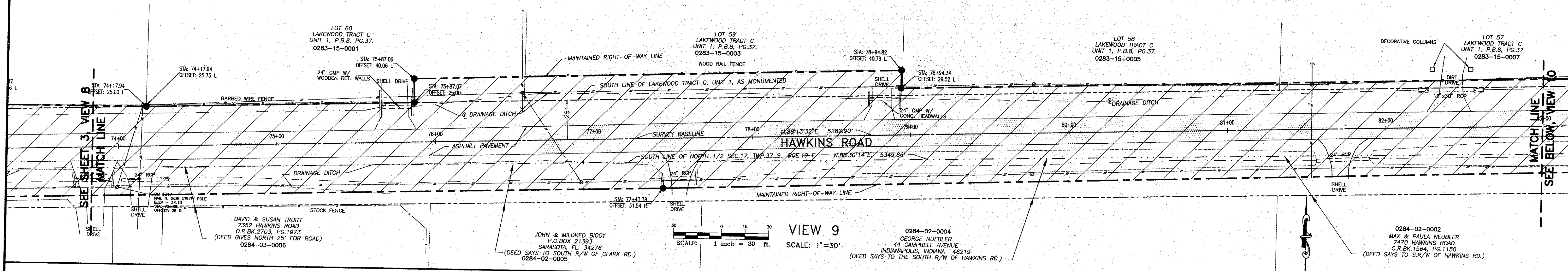
BY	DATE
JHF	1/97
RRC	1/97
WFL	5-7-97

REF: F.B.142, PG.146

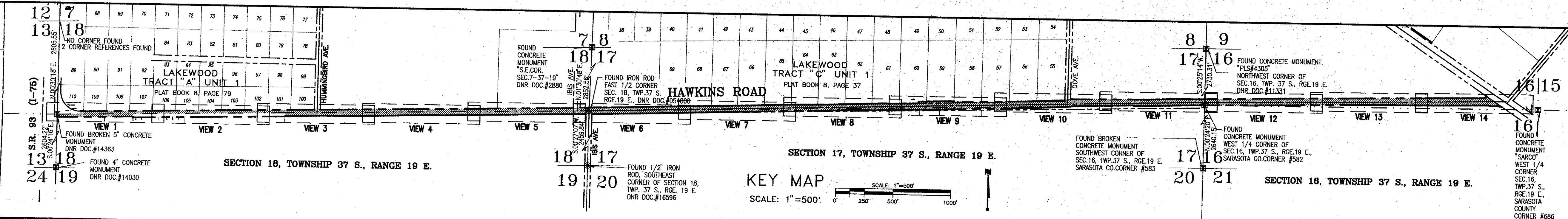
SCALE: 1" = 30'

PROJECT NO: 2338-011-011

SHEET 2 OF 5



FILED FOR RECORD
97 JUL -2 PM 3:01
KARE, E. J. SHERIDAN
CLERK OF CIRCUIT COURT
SARASOTA COUNTY, FL



SARASOTA COUNTY TRANSPORTATION DEPARTMENT
ENGINEERING DIVISION - SURVEY - MAPPING SECTION

MAINTAINED RIGHT-OF-WAY MAP

HAWKINS ROAD
INTERSTATE 75 EAST TO STATE ROAD 72 (CLARK ROAD)

BY	DATE	
DRAWN JHF	1/97	
CHECKED RRC		5-8-97 DATE
COMPARED JWF	5-7-97	5-8-97 DATE
		5-9-97 DATE

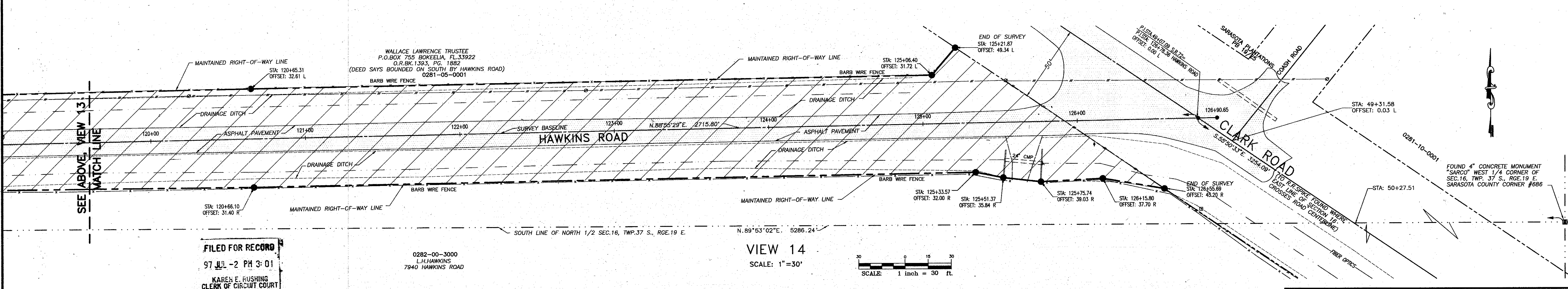
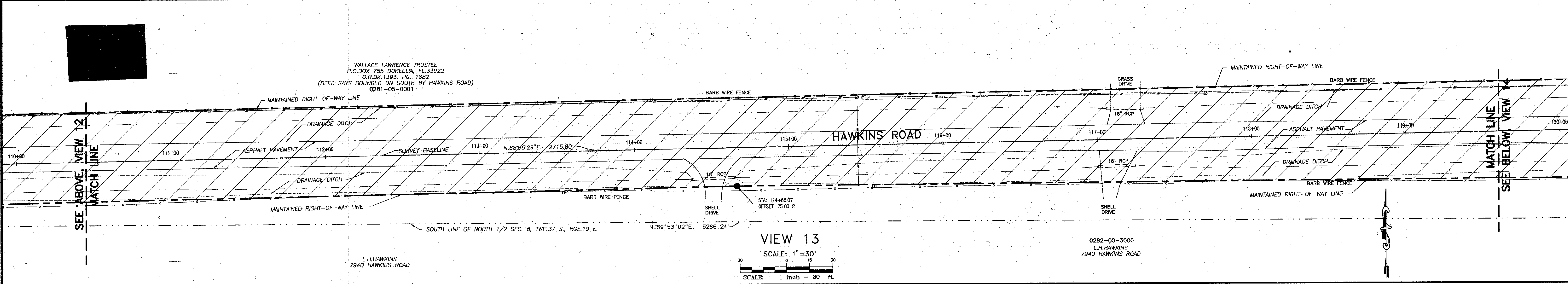
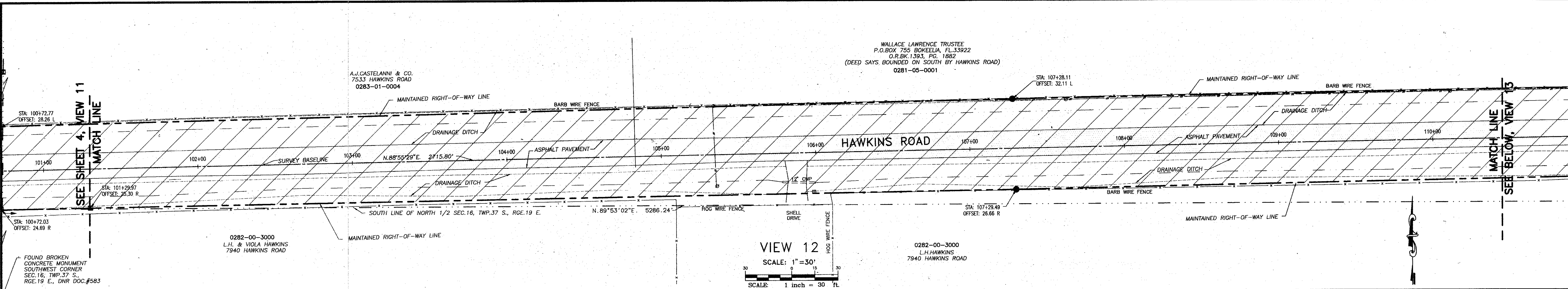
REF. F.B.142, PG.146

TRANSPORTATION DIRECTOR

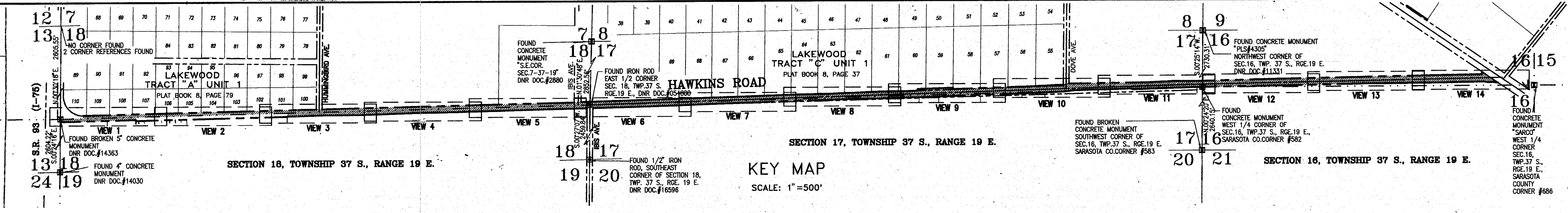
SCALE: 1" = 30'

PROJECT NO. 2338-011-011

SHEET 4 OF 5



FILED FOR RECORD
97 JUL -2 PM 3:01
KAREN E. RUSHING
CLERK OF CIRCUIT COURT
SARASOTA COUNTY, FL



SARASOTA COUNTY TRANSPORTATION DEPARTMENT ENGINEERING DIVISION - SURVEY - MAPPING SECTION			
MAINTAINED RIGHT-OF-WAY MAP			
HAWKINS ROAD			
INTERSTATE 75 EAST TO STATE ROAD 72 (CLARK ROAD)			
BY	JHF	DATE	1/97
DRAWN	JHF	DATE	5-8-97
CHECKED	WJW	DATE	5-7-97
COMPARED	WJW	DATE	5-9-97
REF: F.B.142, PG.146	TRANSPORTATION DIRECTOR		
SCALE: 1" = 30'	PROJECT NO. 2338-011-011	SHEET 5 OF 5	