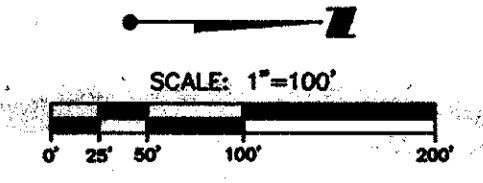
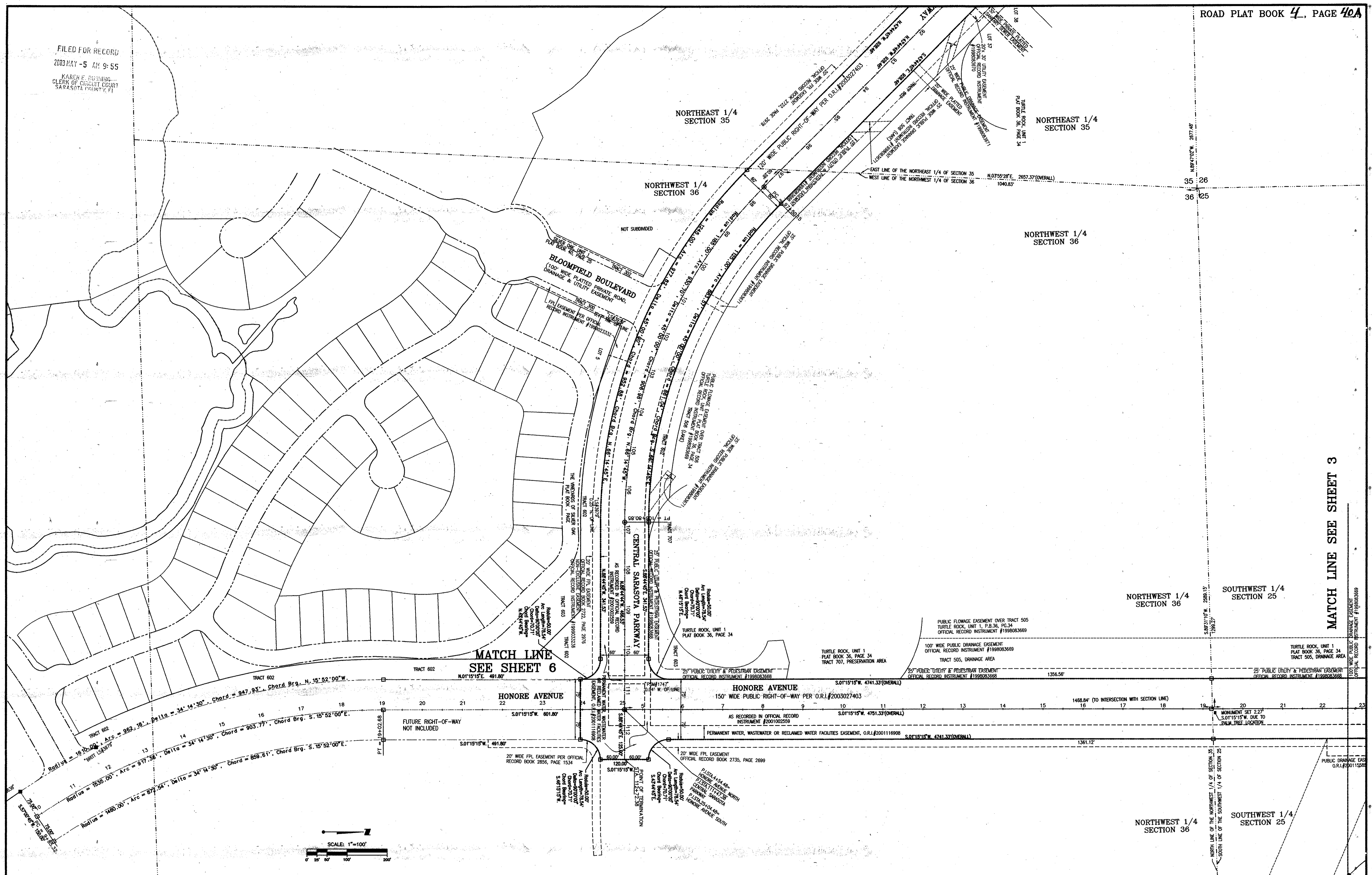


FILED FOR RECORD
2003 MAY -5 AM 9:55
KAREN F. ROBBING
CLERK OF CIRCUIT COURT
SARASOTA COUNTY, FL



B REMOVE PHASE 3 PER COUNTY A REPLACE STATIONING WITH ENGINEERING PLAN STATIONING		DATE: 4/16/03 DRAWN BY: JWB EMP. NO.: 1051 CHECKED BY: RRC EMP. NO.: 063	DATE: 6/4/02 DRAWN BY: JWB EMP. NO.: 1051 CHECKED BY: RRC EMP. NO.: 063	ACTIVITY: COMPUTED BY: JWB DATE: 1/20/01 EMP. NO.: 1051	ACTIVITY: DRAWN BY: JWB DATE: 1/21/01 EMP. NO.: 1051	ACTIVITY: CHECKED BY: RRC DATE: 063	ACTIVITY: CLOSED BY:	TITLE: RIGHT-OF-WAY SURVEY FOR PORTIONS OF HONORE AVENUE & CENTRAL SARASOTA PARKWAY SECTIONS 23, 24, 25, 26, 35 & 36, TOWNSHIP 37 S., RANGE 18 E., SARASOTA COUNTY, FLORIDA	DATE: 1/20/01 HORIZONTAL SCALE: 1" = 100' VERTICAL SCALE: N/A SEC. TWP. RGE.: 3-26 & 36, 37S, 18E	CLIENT: SARASOTA COUNTY TRANSPORTATION DEPARTMENT 1301 CATTLEMAN ROAD SARASOTA, FLORIDA	PROJECT NO.: S2338-103-000 TASK CODE: MARWS SHEET NUMBER: 2 OF 6 DRAWING NUMBER: 0238-103-100
--	--	--	---	---	--	--	----------------------	---	--	---	--

MATCH LINE SEE SHEET 3

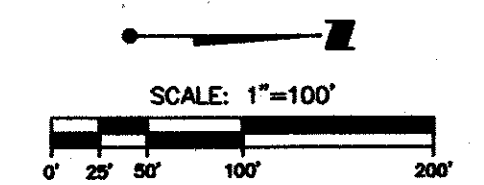
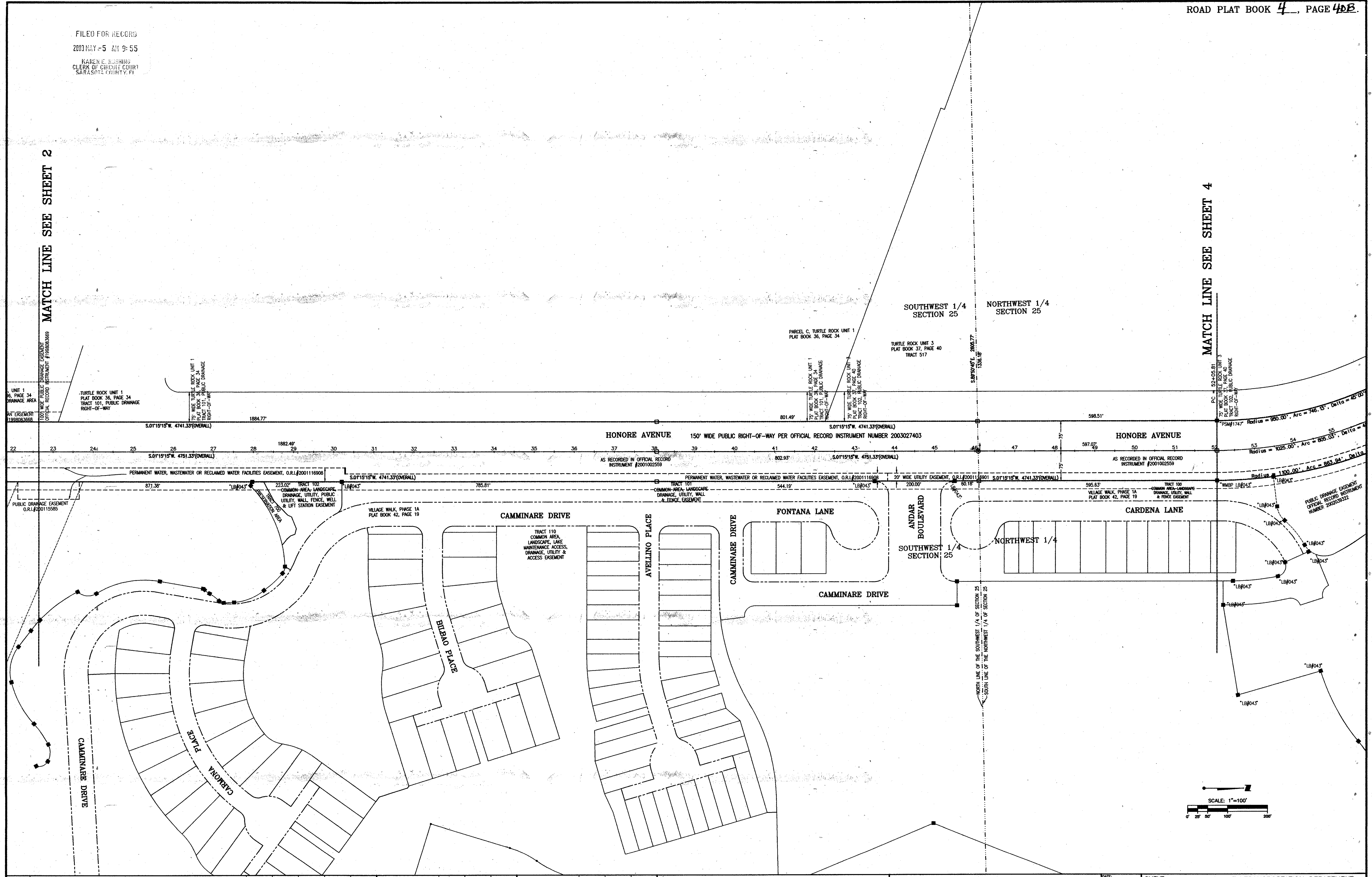
TURTLE ROCK UNIT 1 PLAT BOOK 36, PAGE 34 TRACT 505, DRAINAGE AREA

PUBLIC DRAINAGE EASEMENT OFFICIAL RECORD INSTRUMENT #1998033668

FILED FOR RECORD
2003 MAY -5 AM 9:55
KAREN E. RUSNING
CLERK OF CIRCUIT COURT
SARASOTA COUNTY, FL

MATCH LINE SEE SHEET 2

MATCH LINE SEE SHEET 4



REV. NO.	DATE	DESCRIPTION	BY	CHECKED BY
A	6/4/02	REPLACE STATIONING WITH ENGINEERING PLAN STATIONING	JWB	RRC

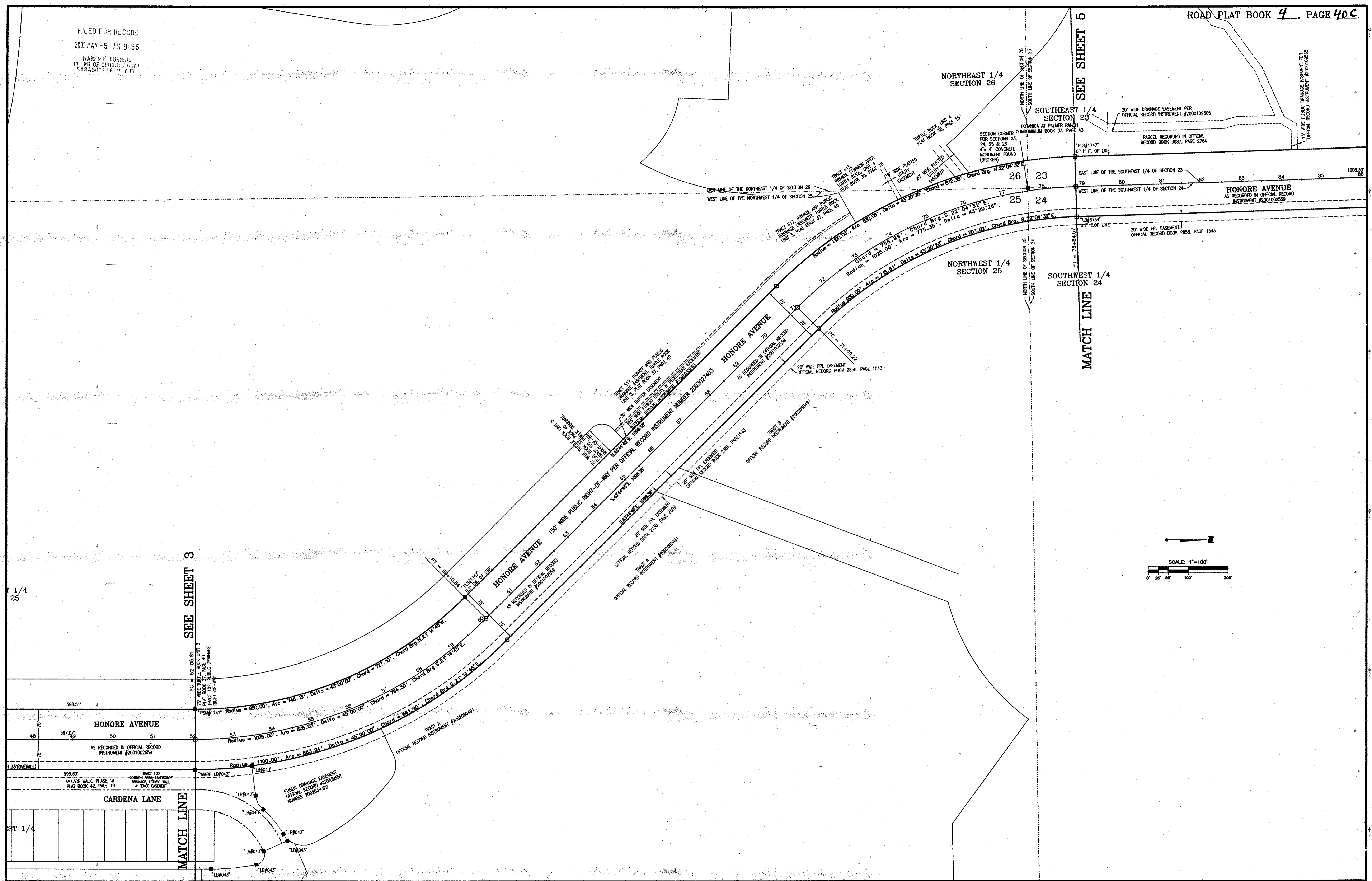
ACTIVITY	INITIALS	EMP. NO.	DATE
SENT TO:			
FIELD BOOK:			
ACTIVITY			
COMPUTED BY:	JWD	1051	1/20/01
DRAWN BY:	JWD	1051	1/21/01
CHECKED BY:	RRC	063	
CLOSED BY:			

WilsonMiller
 Planners • Engineers • Ecologists • Surveyors • Landscape Architects • Transportation Consultants
 WilsonMiller, Inc.
 Naples • Fort Myers • Sarasota • Bradenton • Tampa • Tallahassee
 6800 Professional Parkway East, Suite 200 • Sarasota, Florida 34240-5404 • Phone 941-557-9907 • Fax 941-557-9907 • Web Site www.wilsonmiller.com

TITLE: RIGHT-OF-WAY SURVEY FOR PORTIONS OF HONORE AVENUE & CENTRAL SARASOTA PARKWAY SECTIONS 23, 24, 25, 26, 35 & 36, TOWNSHIP 37 S, RANGE 18 E., SARASOTA COUNTY, FLORIDA

DATE: 1/20/01	CLIENT: SARASOTA COUNTY TRANSPORTATION DEPARTMENT
HORIZONTAL SCALE: 1" = 100'	1301 GATTELMEN ROAD, SARASOTA, FLORIDA
VERTICAL SCALE: N/A	
PROJECT NO.: S2338-103-000	TASK CODE: MARWS
SHEET NUMBER: 3 OF 6	DRAWING NUMBER: 02338-103-190

FILED FOR RECORD
2003 MAY -5 AM 9:55
KAREN E. RUSHING
CLERK OF CIRCUIT COURT
SARASOTA COUNTY, FL



REV. NO.	REVISION	DATE	DRAWN BY	EMP. NO.	CHECKED BY	EMP. NO.
A	REPLACE STATIONING WITH ENGINEERING PLAN STATIONING	6/4/02	JWB	1051	RRC	063

ACTIVITY	INITIALS	EMP. NO.	DATE
SENT TO:			
FIELD BOOK:			
COMPUTED BY:	JWD	1051	1/20/01
DRAWN BY:	JWD	1051	1/21/01
CHECKED BY:	RRC	063	
CLOSED BY:			

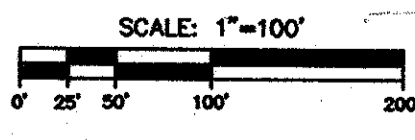
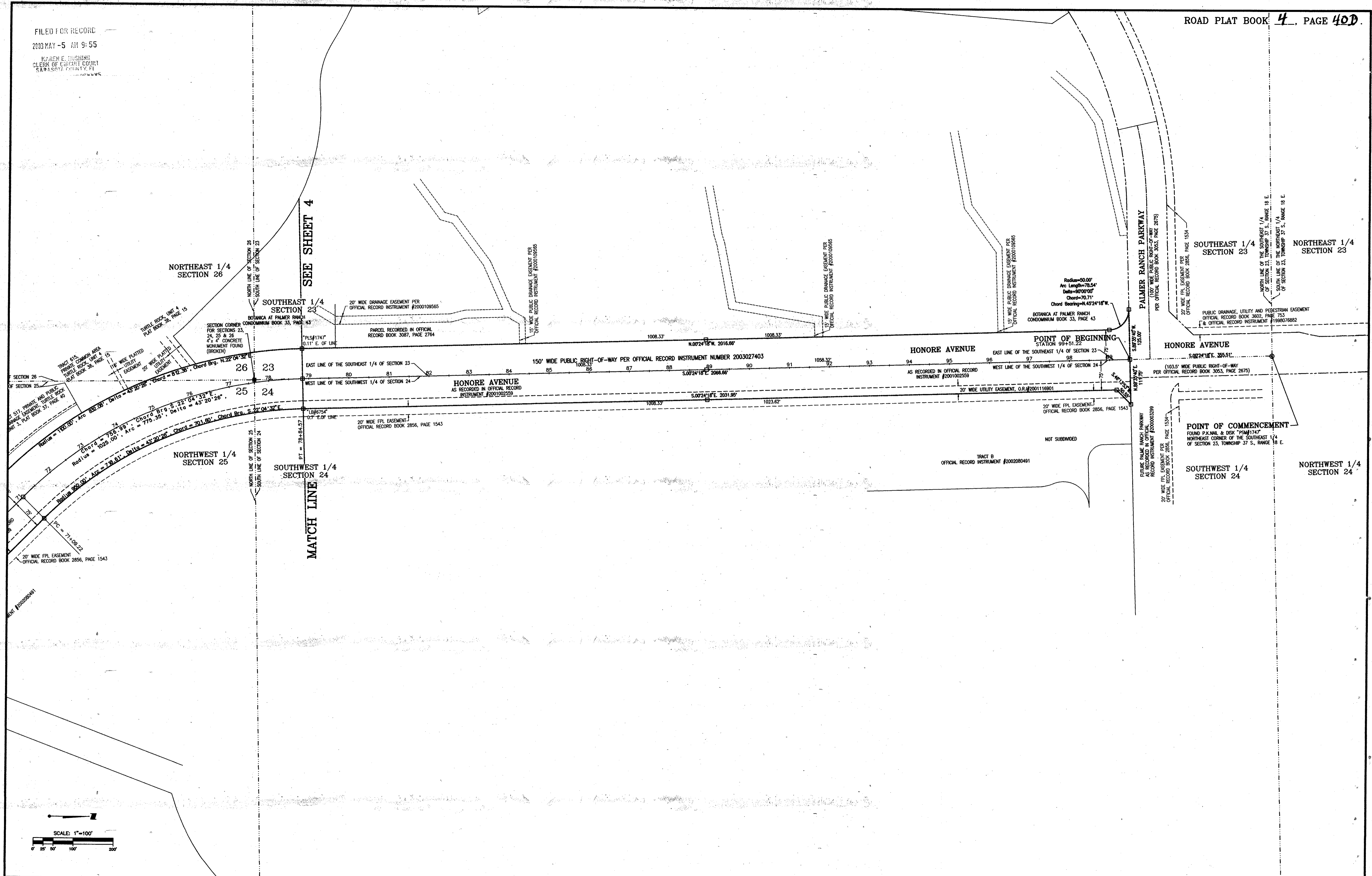
WilsonMiller
Planners • Engineers • Ecologists • Surveyors • Landscape Architects • Transportation Consultants

WilsonMiller, Inc.
Nagle • Fort Myers • Sarasota • Bradenton • Tampa • Tallahassee
 6800 Professional Parkway East, Suite 300 • Sarasota, Florida 34242-9884 • Phone 941-557-0800 • Fax 941-557-0800 • Web Site www.wilsonmiller.com

TITLE: RIGHT-OF-WAY SURVEY FOR PORTIONS OF
HONORE AVENUE & CENTRAL SARASOTA PARKWAY
SECTIONS 23, 24, 25, 26, 35 & 36, TOWNSHIP 37 S.,
RANGE 18 E., SARASOTA COUNTY, FLORIDA

DATE: 1/20/01	CLIENT: SARASOTA COUNTY TRANSPORTATION DEPARTMENT
HORIZONTAL SCALE: 1" = 100'	1301 CATTLEMAN ROAD SARASOTA, FLORIDA
VERTICAL SCALE: N/A	
SEC. TWP. RGE: 3-26 & 36, 37S, 18E	
PROJECT NO: S2338-105-000	TASK CODE: MARWS
SHEET NUMBER: 4	OF 6
DRAWING NUMBER: 02338-105-191*	

FILED FOR RECORD
 2003 MAY -5 AM 9:55
 KAREN E. BUSHING
 CLERK OF CIRCUIT COURT
 SARASOTA COUNTY, FL

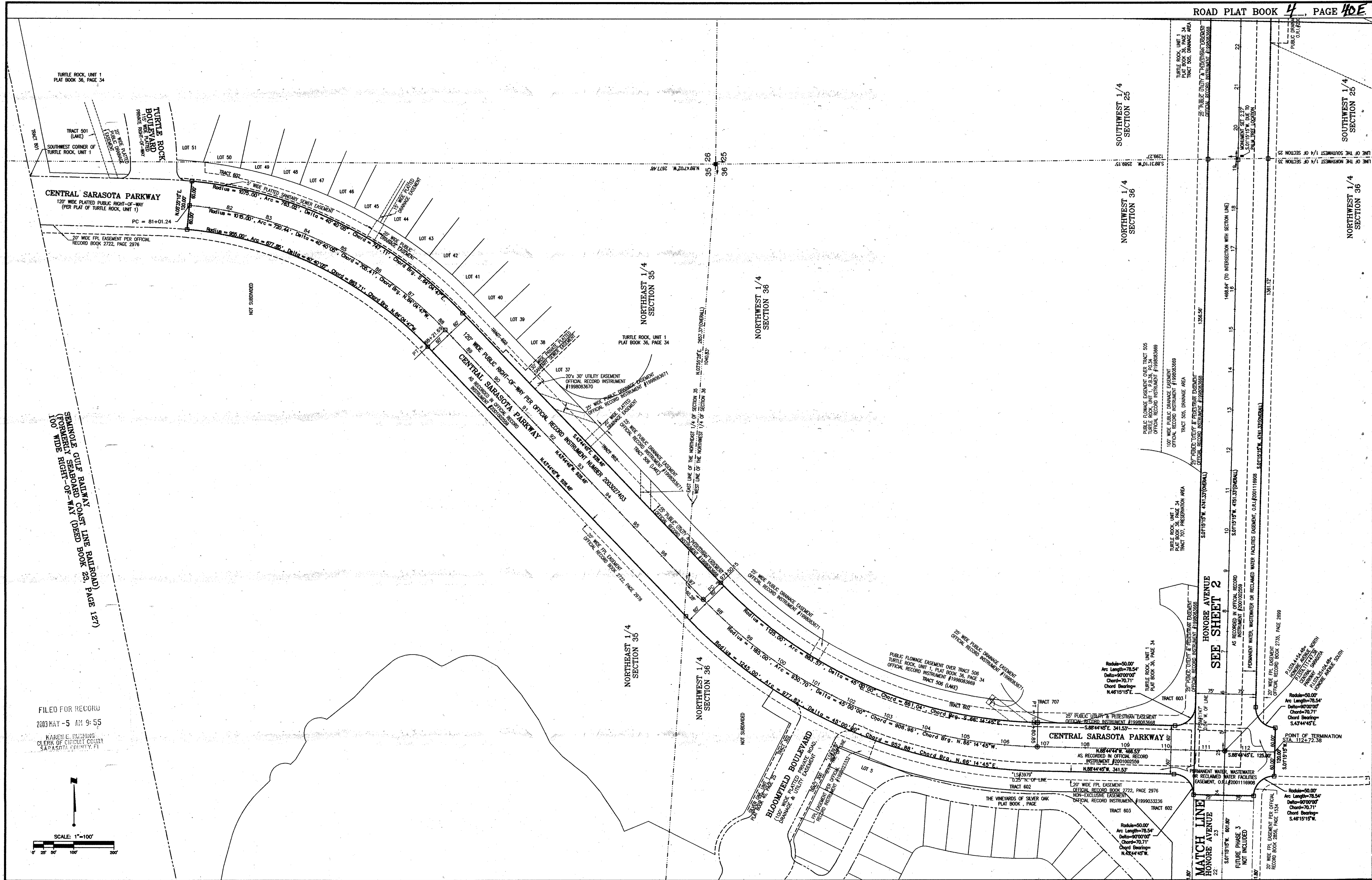


REV. NO.	REVISION	DATE	DRAWN BY	EMP. NO.	CHECKED BY	EMP. NO.
A	REPLACE STATIONING WITH ENGINEERING PLAN STATIONING	6/4/02	JWB	1051	RRC	063

WilsonMiller
 Planners • Engineers • Ecologists • Surveyors • Landscape Architects • Transportation Consultants
 WilsonMiller, Inc.
 Naples • Fort Myers • Sarasota • Bradenton • Tampa • Tallahassee
 6800 Professional Parkway East, Suite 207 • Sarasota, Florida 34240-9404 • Phone 941-557-6800 • Fax 941-557-6800 • Web-Site www.wilsonmiller.com

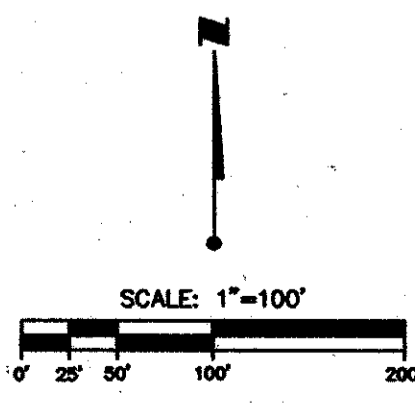
TITLE: RIGHT-OF-WAY SURVEY FOR PORTIONS OF
 HONORE AVENUE & CENTRAL SARASOTA PARKWAY
 SECTIONS 23, 24, 25, 26, 35 & 36, TOWNSHIP 37 S.,
 RANGE 18 E., SARASOTA COUNTY, FLORIDA

DATE: 1/20/01	CIENT: SARASOTA COUNTY TRANSPORTATION DEPARTMENT
HORIZONTAL SCALE: 1" = 100'	1301 CATTLEMAN ROAD SARASOTA, FLORIDA
VERTICAL SCALE: N/A	PROJECT NO.: S2338-103-000
SEC: TWP: RGE: 3-26 & 36, 37S, 18E	TASK CODE: MARFS
	SHEET NUMBER: 5 OF 6
	DRAWING NUMBER: 02338-103-102



SEMINOLE GULF RAILWAY
(FORMERLY SEABOARD COAST LINE RAILROAD) PAGE 127
100' WIDE RIGHT-OF-WAY

FILED FOR RECORD
2003 MAY -5 AM 9:55
KAREN E. BUCHING
CLERK OF CIRCUIT COURT
SARASOTA COUNTY, FL



REV. NO.	REVISION	DATE	DRAWN BY	EMP. NO.	CHECKED BY	EMP. NO.
B	REMOVE PHASE 3 PER COUNTY	4/16/03	JWB	1051	RRC	063
A	REPLACE STATIONING WITH ENGINEERING PLAN STATIONING	6/4/02	JWB	1051	RRC	063

ACTIVITY	INITIALS	EMP. NO.	DATE
SENT TO:			
FIELD BOOK:			
ACTIVITY	INITIALS	EMP. NO.	DATE
COMPUTED BY:	JWD	1051	1/20/01
DRAWN BY:	JWD	1051	1/21/01
CHECKED BY:	RRC	063	
CLOSED BY:			

Wilson Miller
 Planners • Engineers • Ecologists • Surveyors • Landscape Architects • Transportation Consultants
 Wilson Miller, Inc.
 Naples • Fort Myers • Sarasota • Bradenton • Tampa • Tallahassee
 6000 Professional Parkway East, Suite 300 • Sarasota, Florida 34240-9464 • Phone 941-557-9900 • Fax 941-557-9900 • Web Site www.wilsonmiller.com

TITLE: RIGHT-OF-WAY SURVEY FOR PORTIONS OF
 HONORE AVENUE & CENTRAL SARASOTA PARKWAY
 SECTIONS 23, 24, 25, 26, 35 & 36, TOWNSHIP 37 S.,
 RANGE 18 E., SARASOTA COUNTY, FLORIDA

DATE: 1/20/01	CLIENT: SARASOTA COUNTY TRANSPORTATION DEPARTMENT
HORIZONTAL SCALE: 1" = 100'	1301 CATTLEMAN ROAD, SARASOTA, FLORIDA
VERTICAL SCALE: N/A	PROJECT NO.: S2336-103-000
SEC. TWP. RGE: 3-26 & 36, 37S, 18E	TASK CODE: MARWS
	SHEET NUMBER: 6 OF 6
	DRAWING NUMBER: 02336-103-103

SEE SHEET 2

MATCH LINE
 HONORE AVENUE
 FUTURE PHASE 3
 NOT INCLUDED