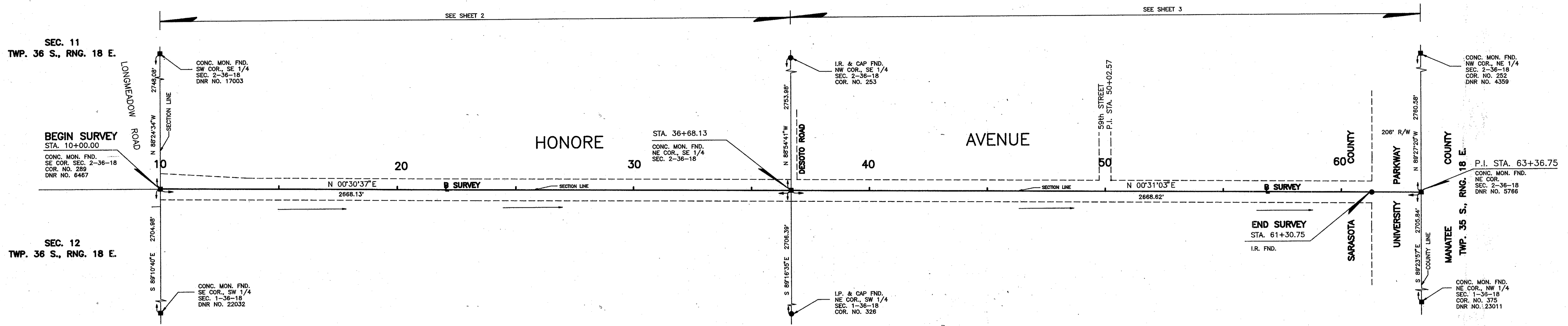
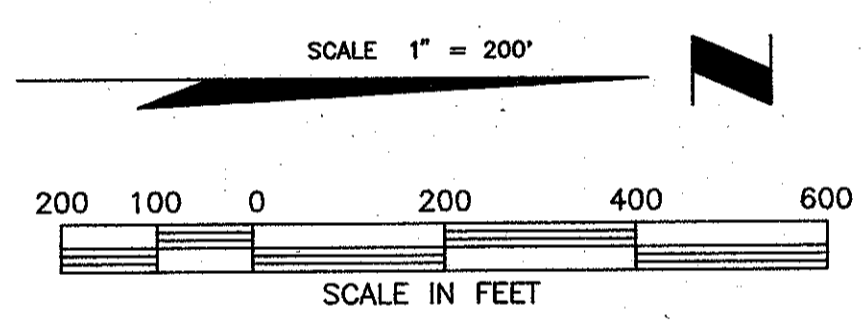


SECTION 2, TOWNSHIP 36 SOUTH, RANGE 18 EAST



SECTION 1, TOWNSHIP 36 SOUTH, RANGE 18 EAST



FILED FOR RECORD
 29th AUG 25 PM 12:50
 KAREN E. RUSHING
 CLERK OF CIRCUIT COURT
 SARASOTA COUNTY, FL

LEGEND OF ABBREVIATIONS

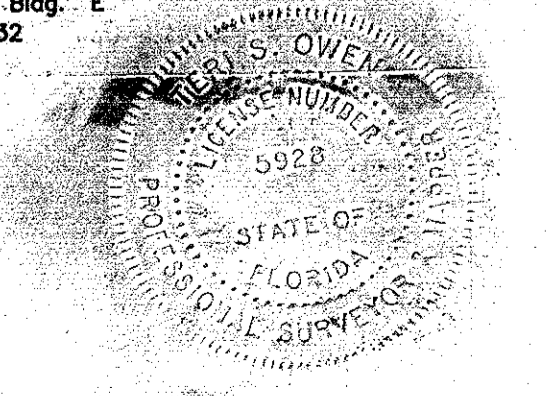
- | | |
|---|--|
| AVE. = AVENUE | N.G.V.D. = NATIONAL GEODETIC |
| B = BASELINE | NO. = NUMBER |
| BLVD. = BOULEVARD | N.O.S. = NATIONAL OCEAN SERVICE |
| B.M. = BENCH MARK | NW = NORTHWEST |
| B.T.B. = BACK TOP OF BANK | O.A. = OVER ALL |
| C.B. = CONDOMINIUM BOOK | O/E = OVERHEAD ELECTRIC |
| C.C.C.L. = COASTAL CONSTRUCTION CONTROL LINE | O.T. = ORDER OF TAKING |
| CH. = CHORD | P.B. = PLAT BOOK |
| CHP. = CHAPTER | P.C. = POINT OF CURVATURE |
| CH. BRG. = CHORD BEARING | P.C.P. = PERMANENT CONTROL POINT |
| C. = CENTERLINE | PG. = PAGE |
| C.M.P. = CONCRETE MONUMENT | P.I. = POINT OF INTERSECTION |
| C.M.P. = CORRUGATED METAL PIPE | P.L. = PROPERTY LINE |
| CO. = COUNTY | P.L.S. = PROFESSIONAL LAND SURVEYOR |
| CONDO. = CONDOMINIUM | P.R.C. = POINT OF REVERSE CURVE |
| CONST. = CONSTRUCTION | P.R.M. = PERMANENT REFERENCE MONUMENT |
| COR. = CORNER | P.T. = POINT OF TANGENCY |
| D.B. = DEED BOOK | R = RADIUS |
| D.D. = DATA DRAWER | R.C.P. = REINFORCED CONCRETE PIPE |
| D.N.R. = DEPARTMENT OF NATURAL RESOURCES | RD. = ROAD |
| D.O.T. = DEPARTMENT OF TRANSPORTATION | REF. = REFERENCE |
| DR. = DRIVE | RESUB. = RESUBDIVISION |
| DRAIN. = DRAINAGE | RNG. = RANGE |
| E = EAST | R.P.B. = ROAD PLAT BOOK |
| EASE. = EASEMENT | R.R. = RAILROAD |
| EP = EDGE OF PAVEMENT | R.T. = RIGHT |
| F.A.C. = FLORIDA ADMINISTRATION CODE | R/W = RIGHT-OF-WAY |
| F.B. = FIELD BOOK | S. = SOUTH |
| F.D.O.T. = FLORIDA DEPARTMENT OF TRANSPORTATION | SE. = SOUTHEAST |
| FL. = FLORIDA | SEC. = SECTION |
| FND. = FOUND | S.F.D.D. = SARASOTA-FRUITVILLE DRAINAGE DISTRICT |
| F.N. = FILE NUMBER | S.R. = STATE ROAD |
| F.P. & L. = FLORIDA POWER AND LIGHT | ST. = STREET |
| G.T.E. = GENERAL TELEPHONE | STA. = STATION |
| ELECTRIC | SUB. = SUBDIVISION |
| I.P. = IRON PIPE | SW = SOUTHWEST |
| I.R. = IRON ROD | T. = TANGENT |
| L = LENGTH | T.I.I.F. = TRUSTEES OF THE INTERNAL IMPROVEMENT FUND |
| LT. = LEFT | T.B. = TOP OF BANK |
| M.H.W.L. = MEAN HIGH WATER LINE | TWP. = TOWNSHIP |
| MON. = MONUMENT | U/E = UNDERGROUND ELECTRIC |
| M/R/W = MAINTAINMENT RIGHT-OF-WAY | U.S. = UNITED STATES |
| N. = NORTH | VEG. = VEGETATION |
| N. & D. = NAIL AND DISC | W. = WEST |
| NE = NORTH EAST | |
| P./R/W = PROPOSED RIGHT OF WAY | |

SURVEY CERTIFICATION

I HEREBY CERTIFY THAT THIS RIGHT OF WAY CONTROL SURVEY WAS MADE FOR THE PURPOSE OF SURVEYING, REFERENCING, DESCRIBING AND MAPPING THE BASE LINE OF SURVEY AND PROPOSED RIGHT OF WAY LINES AS SHOWN AND DEPICTED HEREON AND THAT SAID SURVEY WAS DONE UNDER MY RESPONSIBLE CHARGE AND MEETS THE MINIMUM TECHNICAL STANDARDS SET FORTH BY THE FLORIDA BOARD OF PROFESSIONAL LAND SURVEYORS IN CHAPTER 21HH-6, FLORIDA ADMINISTRATIVE CODE, PURSUANT TO SECTION 472.027, FLORIDA STATUTES.

THIS DRAWING, CONSISTING OF SHEETS 1 THROUGH 5 IS A TRUE, ACCURATE AND COMPLETE DEPICTION OF A FIELD SURVEY PERFORMED UNDER MY DIRECTION AND COMPLETED ON 11-4-1991.

Teri S. Owen
 Teri S. Owen, Professional Surveyor and Mapper No. 5928
 Sarasota County Survey-Mapping
 1301 Cottlemen Road Bldg. "E"
 Sarasota, Florida 34232



FILE FOR RECORD IN ROAD PLAT BOOK *RPB4* AT PAGES *68-68D*
 OF THE PUBLIC RECORDS OF SARASOTA COUNTY, FLORIDA,
 THIS *25th* DAY OF *August*, A.D. *2001*

KAREN E. RUSHING
 CLERK OF THE CIRCUIT COURT
 SARASOTA COUNTY, FLORIDA
 BY: *Karen E. Rushing*
 DEPUTY CLERK

LEGEND

- = NAIL & DISK SET
- = NAIL & DISK FND.
- ⊙ = REF. NAIL & DISC
- ⊙ = I.R. SET WITH RED CAP STAMPED COUNTY R/W PLS 1867
- = I.R. FND.
- = RAILROAD SPIKE FND.
- △ = HUB SET
- ▲ = HUB FND.
- = CONCRETE MONUMENT SET
- = CONCRETE MONUMENT FND.
- ⊕ = WATER VALVE
- ⊕ = UTILITY POLE
- ⊕ = G.T. & T.V. CABLE BOX
- ⊕ = MANHOLE
- ⊕ = LIGHT POLE
- ⊕ = FIRE HYDRANT
- ⊕ = GUY WIRE
- T.B. = TOP OF BANK
- EP = EDGE OF PAVEMENT
- ⊕ = OAK TREE
- ⊕ = PINE TREE
- ⊕ = PALM TREE
- ⊕ = R/W MARKER INSTALLED (SEE SURVEYOR'S NOTES)

KEY MAP
 HONORE AVENUE

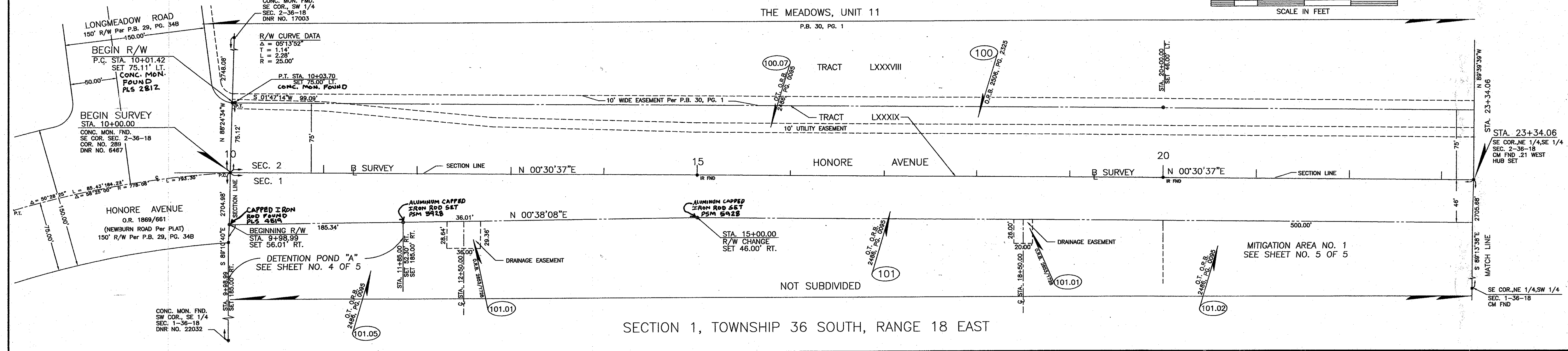
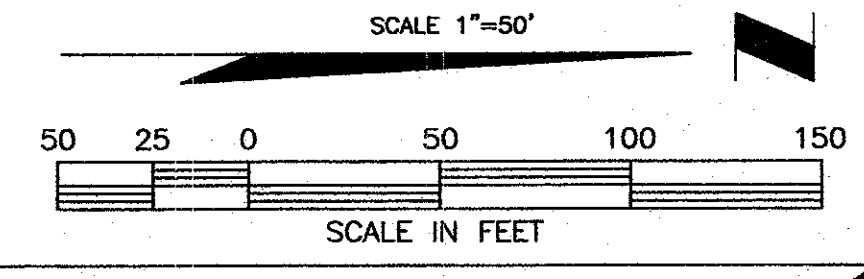
SURVEYOR'S NOTES

- BEARINGS SHOWN ARE BASED ON F.D.O.T. SECTION 17190-2502 AS RECORDED IN ROAD PLAT BOOK 2, PAGE 41-41F, PUBLIC RECORDS OF SARASOTA, FLORIDA.
- TELEPHONE CABLES, LINES AND POLES ARE OWNED BY GENERAL TELEPHONE COMPANY.
- POWER CABLES, POLES AND LINES ARE OWNED BY FLORIDA POWER AND LIGHT COMPANY.
- ALL UNDERGROUND FACILITIES NOT LOCATED.

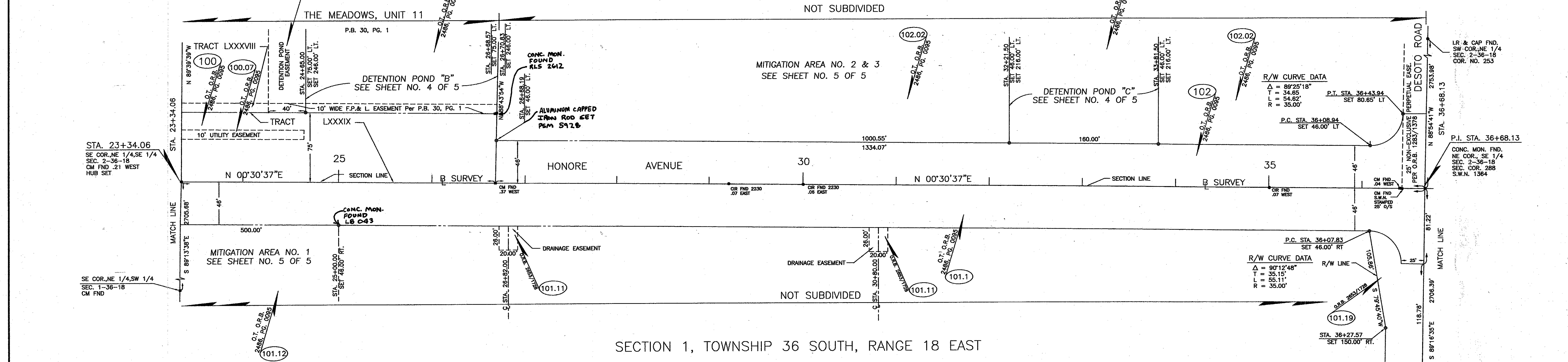
R/W Markers set: 6-25-07

SARASOTA COUNTY TRANSPORTATION DEPARTMENT ENGINEERING DIVISION, SURVEY - MAPPING SECTION			
RIGHT OF WAY CONTROL SURVEY			
HONORE AVENUE LONGMEADOW ROAD TO UNIVERSITY PARKWAY			
BY	DATE		
T. OWEN	3-1-99		
CHECKED	DATE		
<i>Teri S. Owen</i>	2-10-93		
COMPARED	DATE		
<i>Teri S. Owen</i>	2-10-93		
REF.	F.B. 119, PG. 40 CONSULTANT JOB NO. 00-7350		
SCALE	PROJECT NO.	SHEET	
1" = 200'	8521	1 of 5	

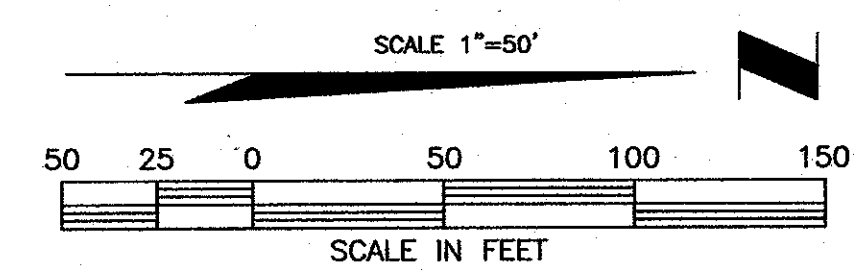
SECTION 2, TOWNSHIP 36 SOUTH, RANGE 18 EAST



SECTION 2, TOWNSHIP 36 SOUTH, RANGE 18 EAST



SECTION 1, TOWNSHIP 36 SOUTH, RANGE 18 EAST



- LEGEND**
- = NAIL & DISK SET
 - = NAIL & DISK FND.
 - = REF. NAIL & DISK
 - = I.R. SET WITH RED CAP STAMPED COUNTY R/W PLS 1867
 - = I.R. FND.
 - = RAILROAD SPIKE FND.
 - ▲ = HUB SET
 - ▲ = HUB FND.
 - = CONCRETE MONUMENT SET
 - = CONCRETE MONUMENT FND.
 - = WATER VALVE
 - = UTILITY POLE
 - = C.T. & T.V. CABLE BOX
 - = MANHOLE
 - = LIGHT POLE
 - = FIRE HYDRANT
 - = GUY WIRE
 - = TOP OF BANK
 - = EDGE OF PAVEMENT
 - = OAK TREE
 - = PINE TREE
 - = PALM TREE
 - = R/W MARKER SET

SARASOTA COUNTY TRANSPORTATION DEPARTMENT
ENGINEERING DIVISION, SURVEY - MAPPING SECTION

RIGHT OF WAY MAP

HONORE AVENUE
LONGMEADOW ROAD TO UNIVERSITY PARKWAY

BY	DATE
K.L.P.	11-6-91
CHECKED	DATE
K.L.P.	2-10-93
COMPARED	DATE
P.F.L.	2-10-93

REF. F.B. 119, PG. 40
CONSULTANT JOB NO. 00-7350

SCALE 1" = 50'

PROJECT NO. 90106
JOB NO. 8521
SHEET 2 OF 5

Drew S. Owen 6407
DATE 6-18-07

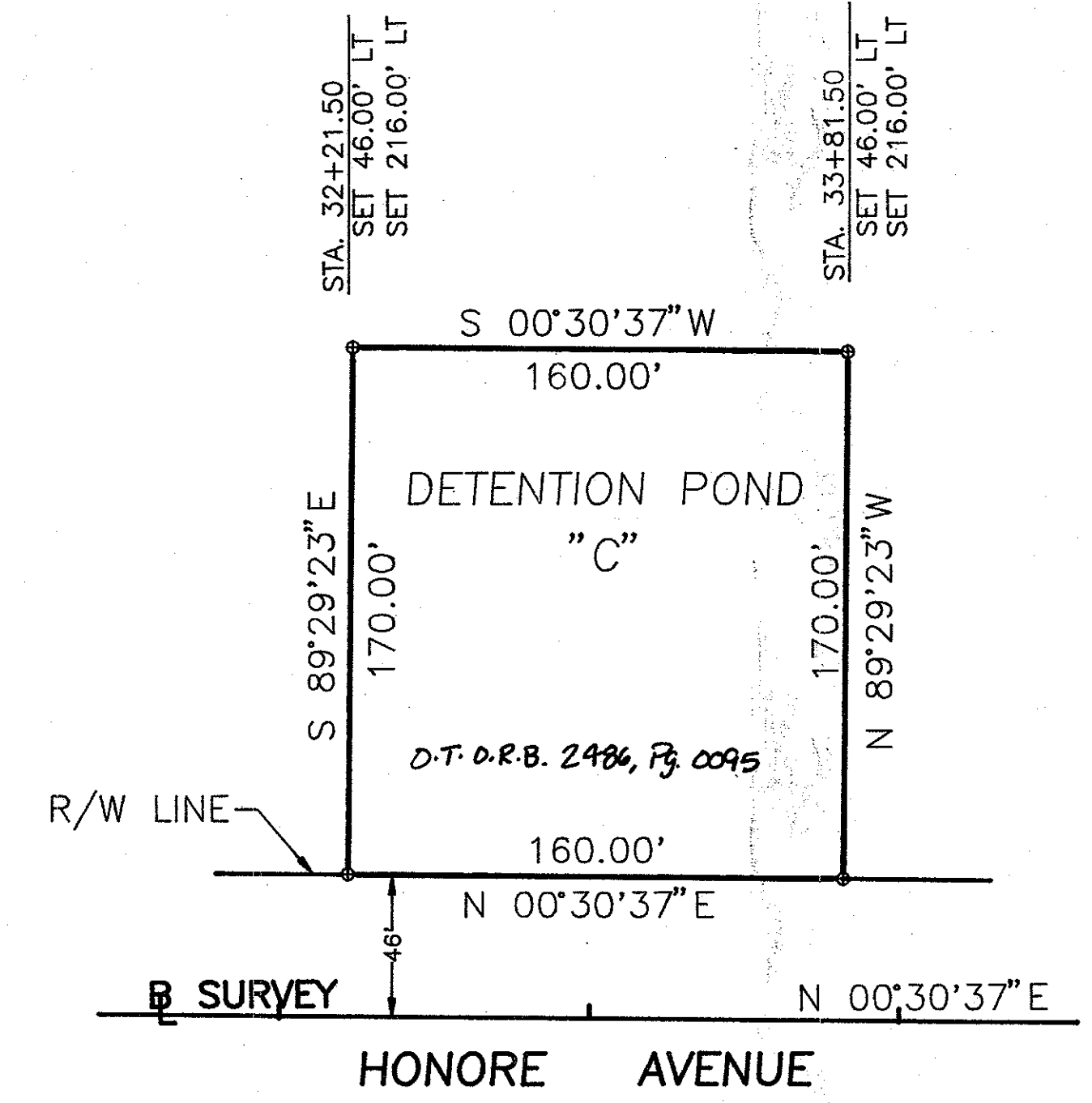
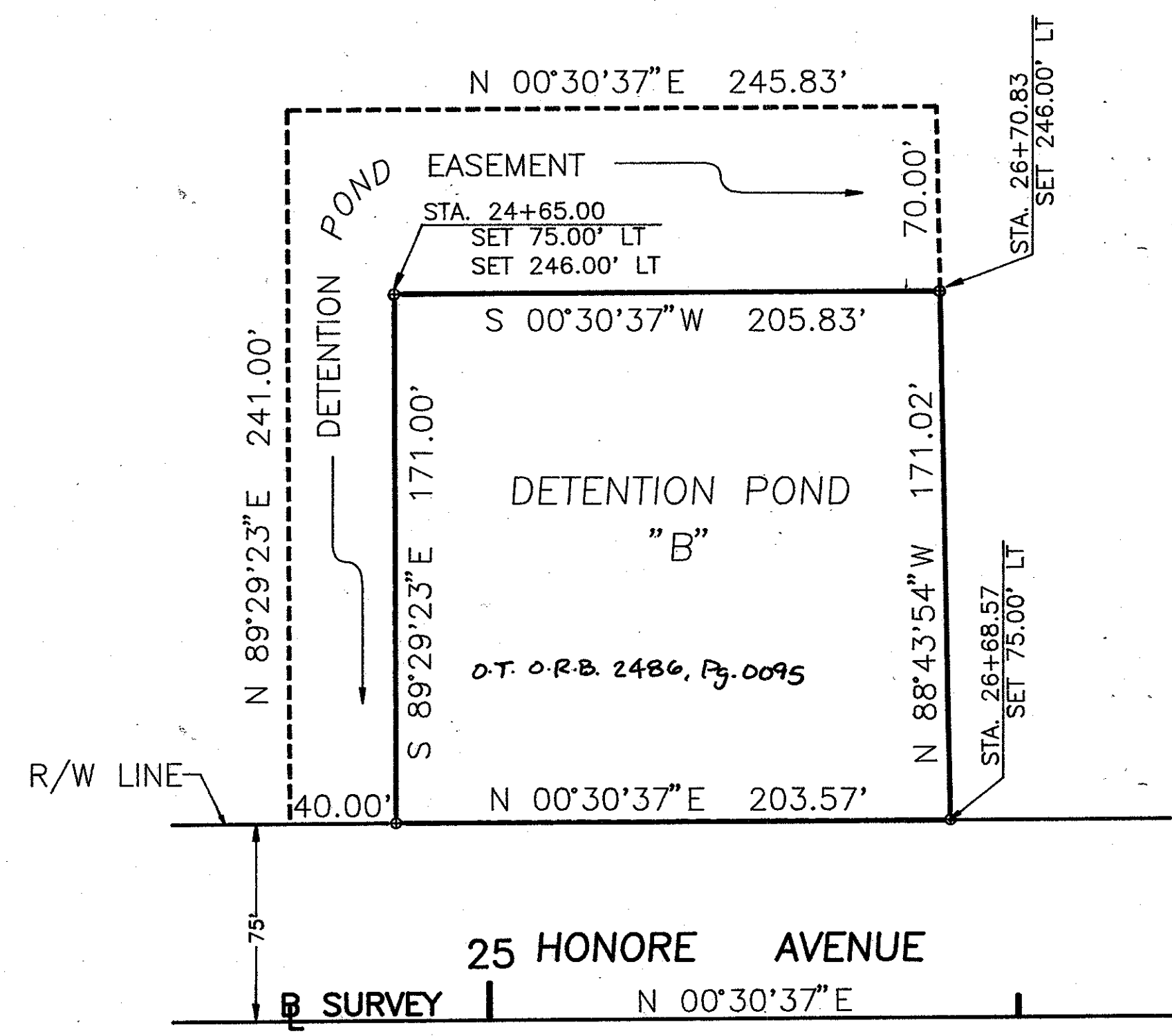
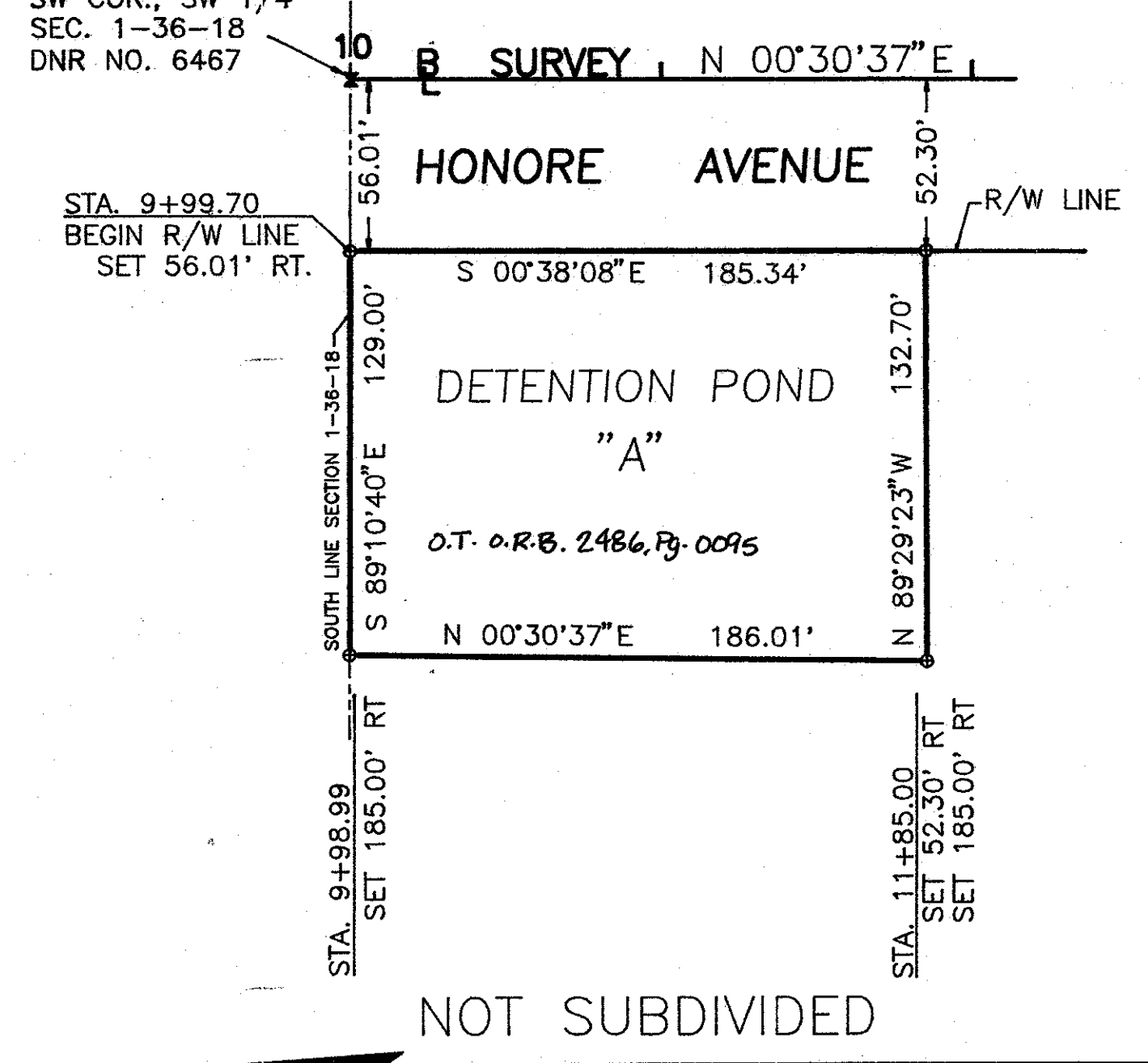
FILED FOR RECORD
2009 AUG 25 PM 12:50
KARSEN PUBLISHING
CLERK OF DISTRICT COURT
SARASOTA COUNTY, FL

CONC. MON. FND.
SW COR., SW 1/4
SEC. 1-36-18
DNR NO. 6467

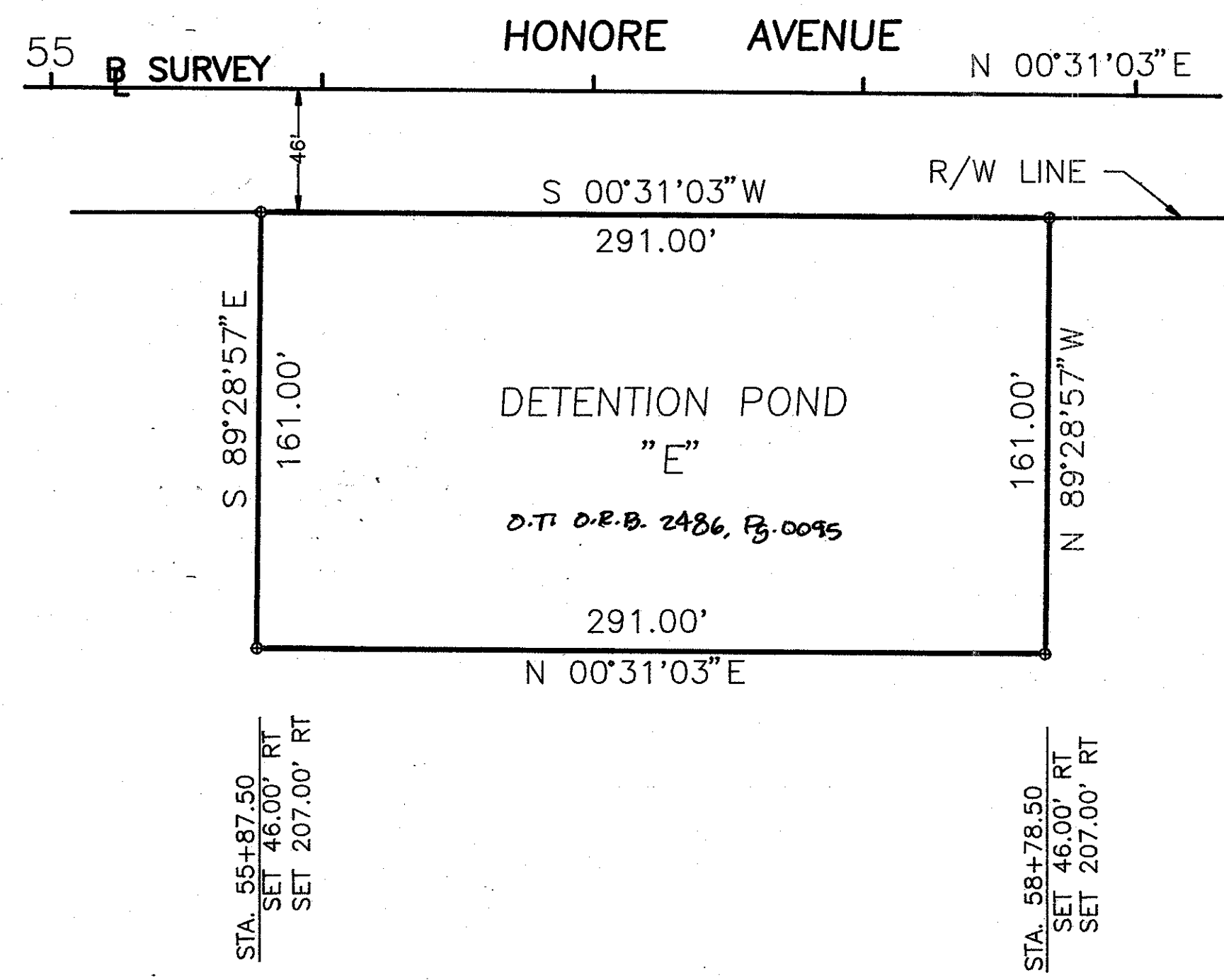
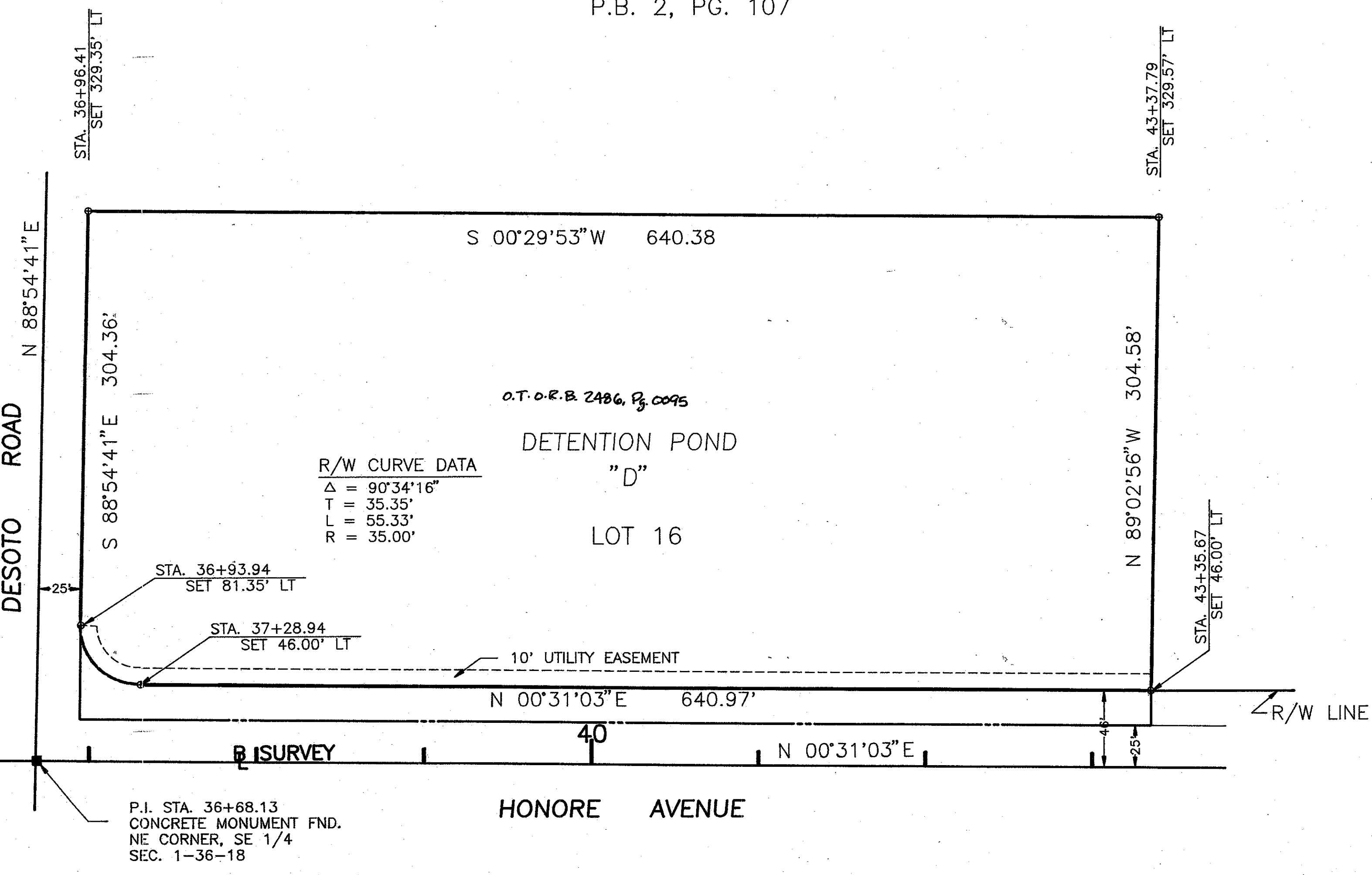
FILED FOR RECORD
2009 AUG 25 PM 12:50
KAROL R. BUSHING
CLERK OF CIRCUIT COURT
SARASOTA COUNTY, FL

THE MEADOWS, UNIT II
P.B. 30, PG. 1

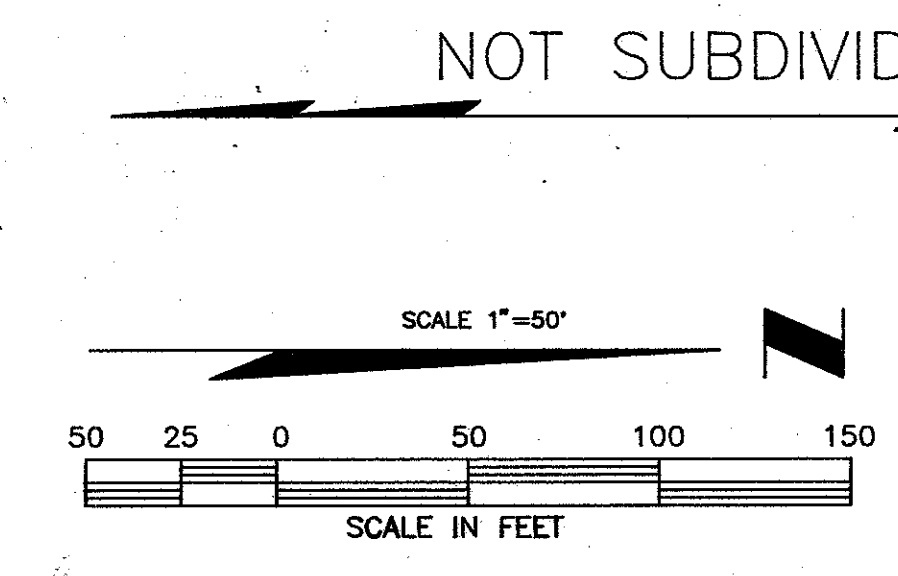
NOT SUBDIVIDED



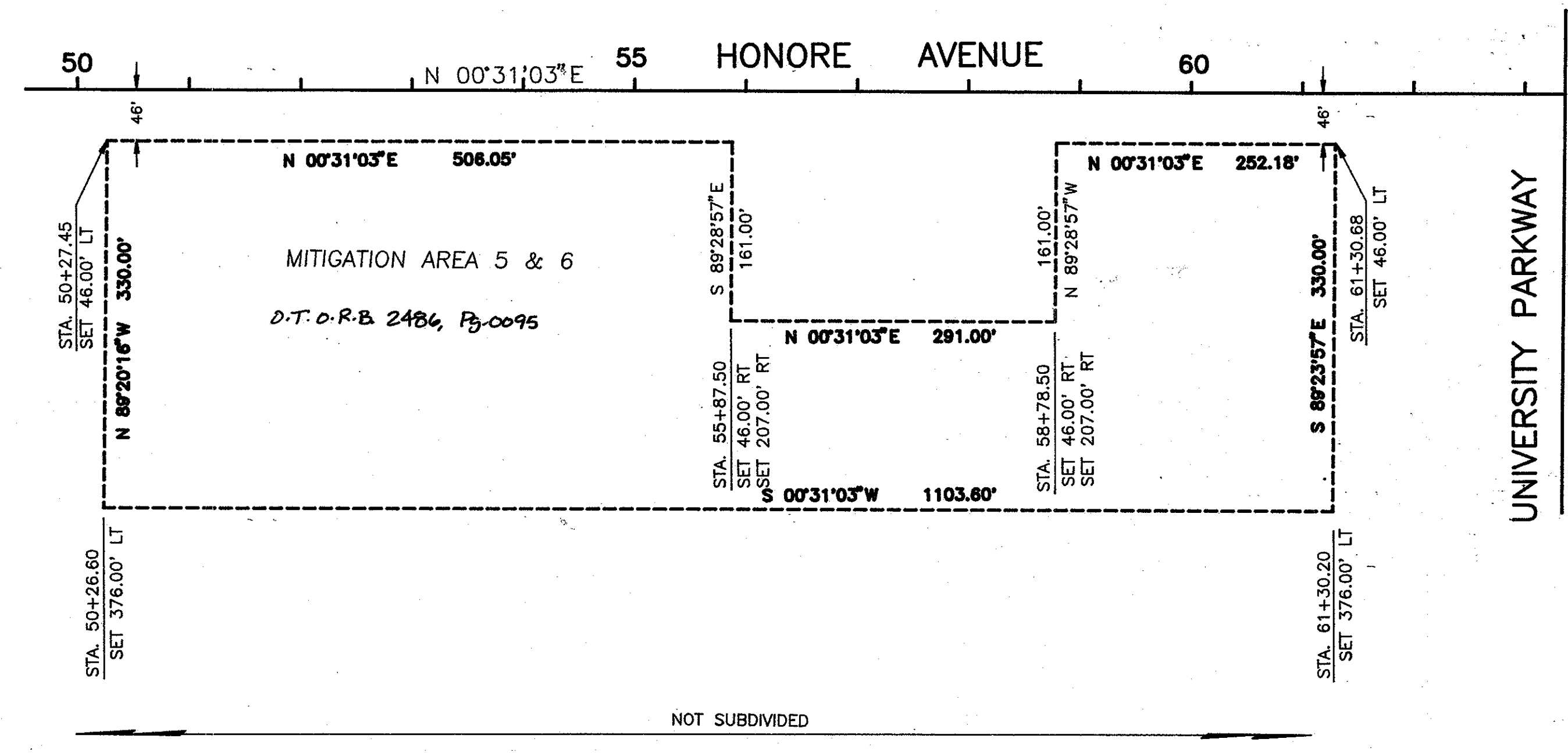
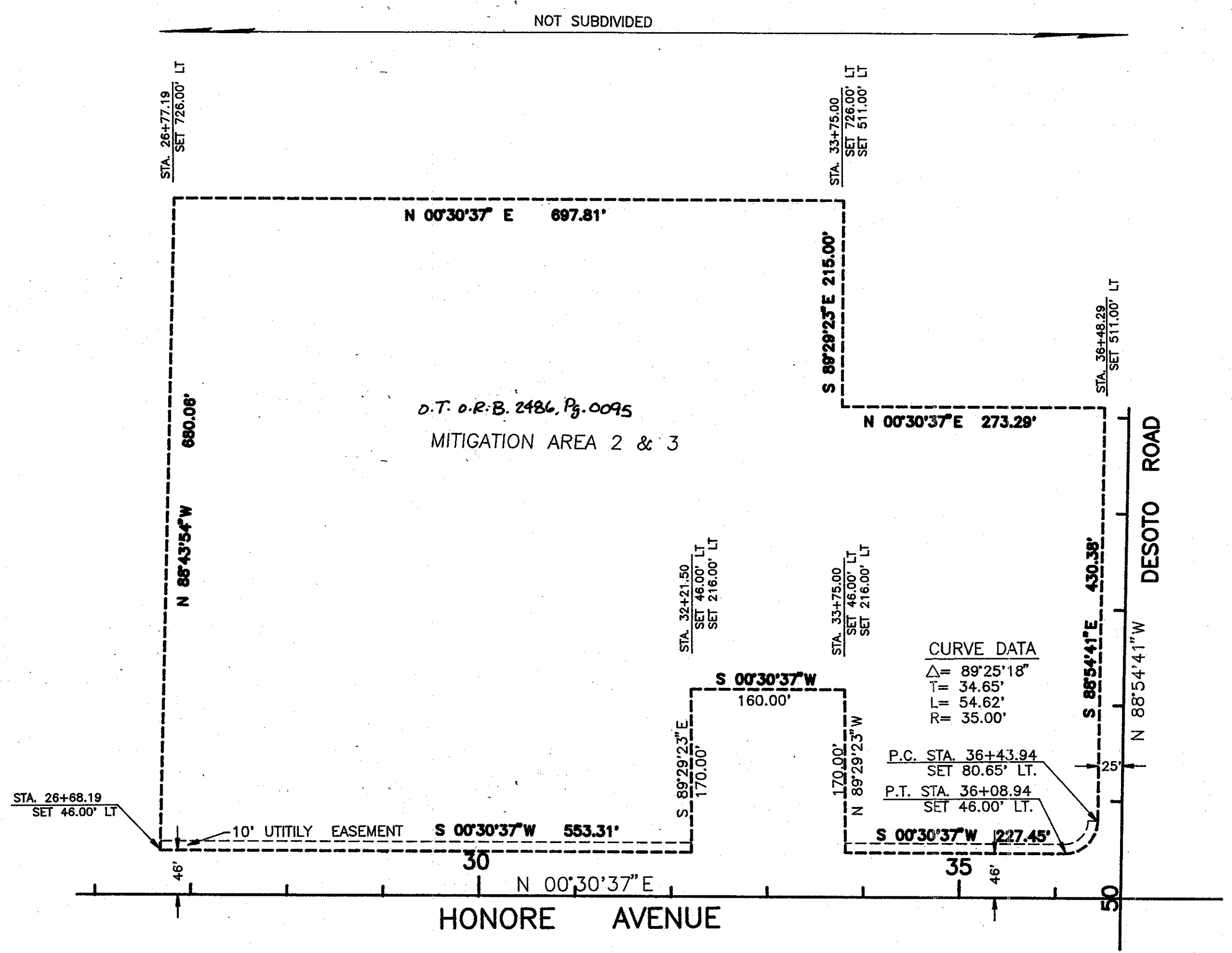
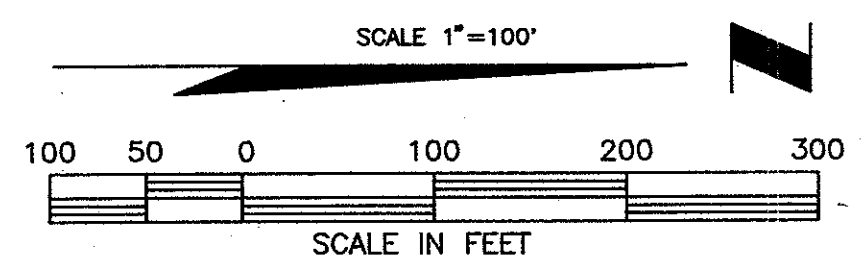
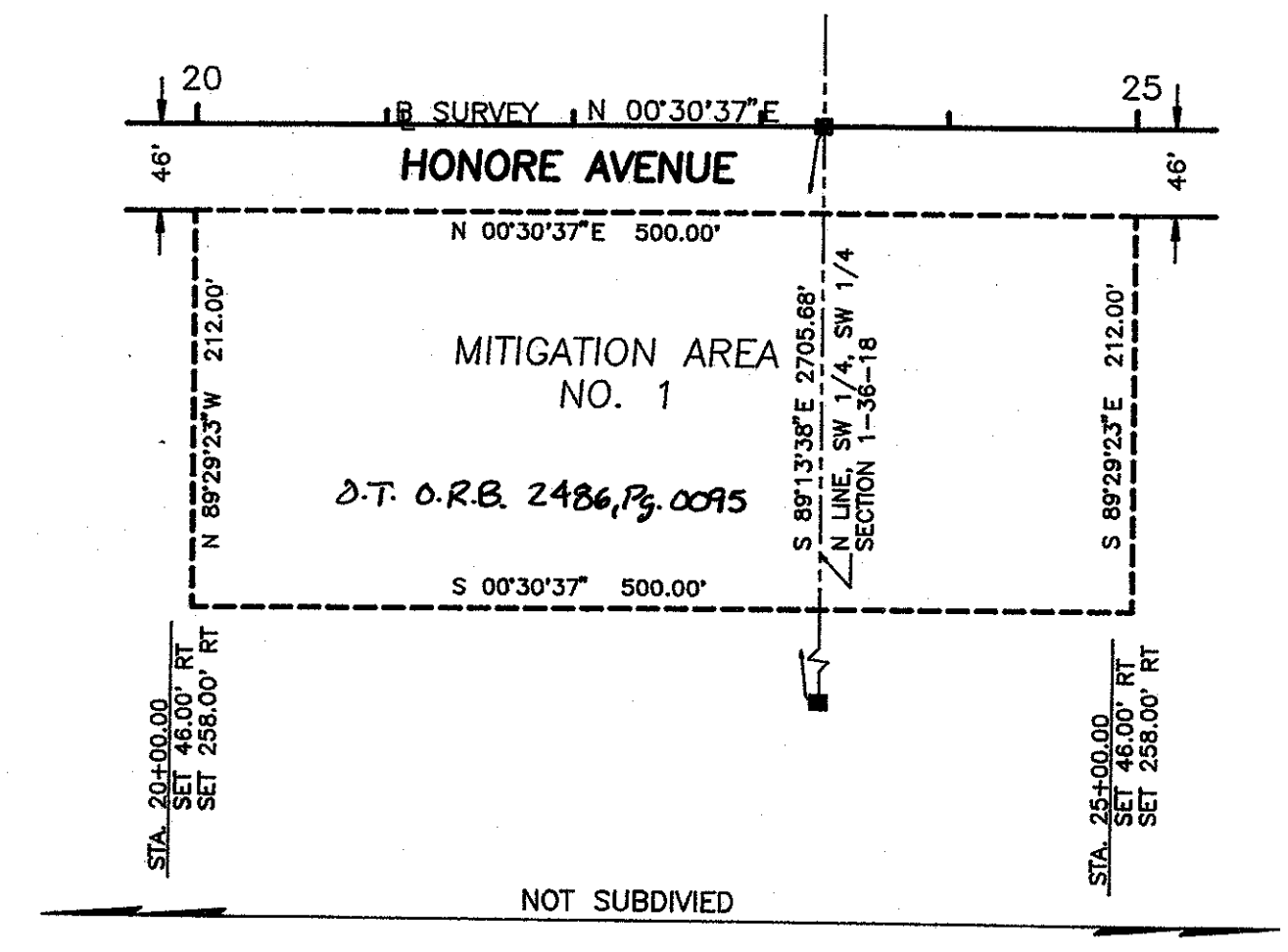
SARASOTA GARDENS
P.B. 2, PG. 107



- LEGEND
- = NAIL & DISK SET
 - = NAIL & DISK FND.
 - ◉ = REF NAIL & DISC
 - = I.R. SET WITH RED CAP STAMPED COUNTY R/W PLS 1867
 - = I.R. FND.
 - ▲ = RAILROAD SPIKE FND.
 - △ = HUB SET
 - ▲ = HUB FND.
 - = CONCRETE MONUMENT SET
 - = CONCRETE MONUMENT FND.
 - = WATER VALVE
 - = UTILITY POLE
 - = G.T. & T.V. CABLE BOX
 - = MANHOLE
 - = LIGHT POLE
 - = FIRE HYDRANT
 - = GUY WIRE
 - = TOP OF BANK
 - EP = EDGE OF PAVEMENT
 - = OAK TREE
 - = PINE TREE
 - = PALM TREE
 - = R/W MARKER INSTALLED
 - = AERIAL TARGET



SARASOTA COUNTY TRANSPORTATION DEPARTMENT ENGINEERING DIVISION, SURVEY - MAPPING SECTION			
RIGHT OF WAY CONTROL SURVEY			
HONORE AVENUE LONGMEADOW ROAD TO UNIVERSITY PARKWAY			
BY	DATE	DATE	
DRAWN K.L.P.	11-6-91	Devi S. Owens 6-4-07	
CHECKED K.L.P.	2-10-93	Coe 6-18-07	
COMPILED PFL	2-10-93	RIGHT OF WAY	
REF. F.B. 119, PG. 40 CONSULTANT JOB NO. 00-7350			
SCALE 1" = 50'	PROJECT NO. 8521	SHEET 4 OF 5	



- LEGEND
- = NAIL & DISK SET
 - = NAIL & DISK FND.
 - = REF NAIL & DISC
 - = I.R. SET WITH RED CAP STAMPED
 - = COUNTY R/W PLS 1867
 - = I.R. FND.
 - = RAILROAD SPIKE FND.
 - = HUB SET
 - = HUB FND.
 - = CONCRETE MONUMENT SET
 - = CONCRETE MONUMENT FND.
 - = WATER VALVE
 - = UTILITY POLE
 - = MANHOLE
 - = G.T. & T.V. CABLE BOX
 - = LIGHT POLE
 - = FIRE HYDRANT
 - = CITY WIRE
 - = TOP OF BANK
 - = EDGE OF PAVEMENT
 - = OAK TREE
 - = PINE TREE
 - = PALM TREE
 - = R/W MARKER INSTALLED
 - = AERIAL TARGET

SARASOTA COUNTY TRANSPORTATION DEPARTMENT ENGINEERING DIVISION, SURVEY - MAPPING SECTION			
RIGHT OF WAY CONTROL SURVEY			
HONORE AVENUE LONGMEADOW ROAD TO UNIVERSITY PKWY			
BY	DATE	DATE	
DRAWN	K.L.P.	11-6-91	6-4-07
CHECKED	K.L.P.	2-10-93	6-18-07
COMPILED	FEL	2-10-93	
REF. F.B. 118, PG. 40 CONSULTANT JOB NO. 00-7350			
SCALE	PROJECT NO.	SHEET	OF
1"=100'	8521	5	5

FILED FOR RECORD
2008 AUG 25 PM 12:50
KAREN J. BISHOP
CLERK OF CIRCUIT COURT
SARASOTA COUNTY, FL