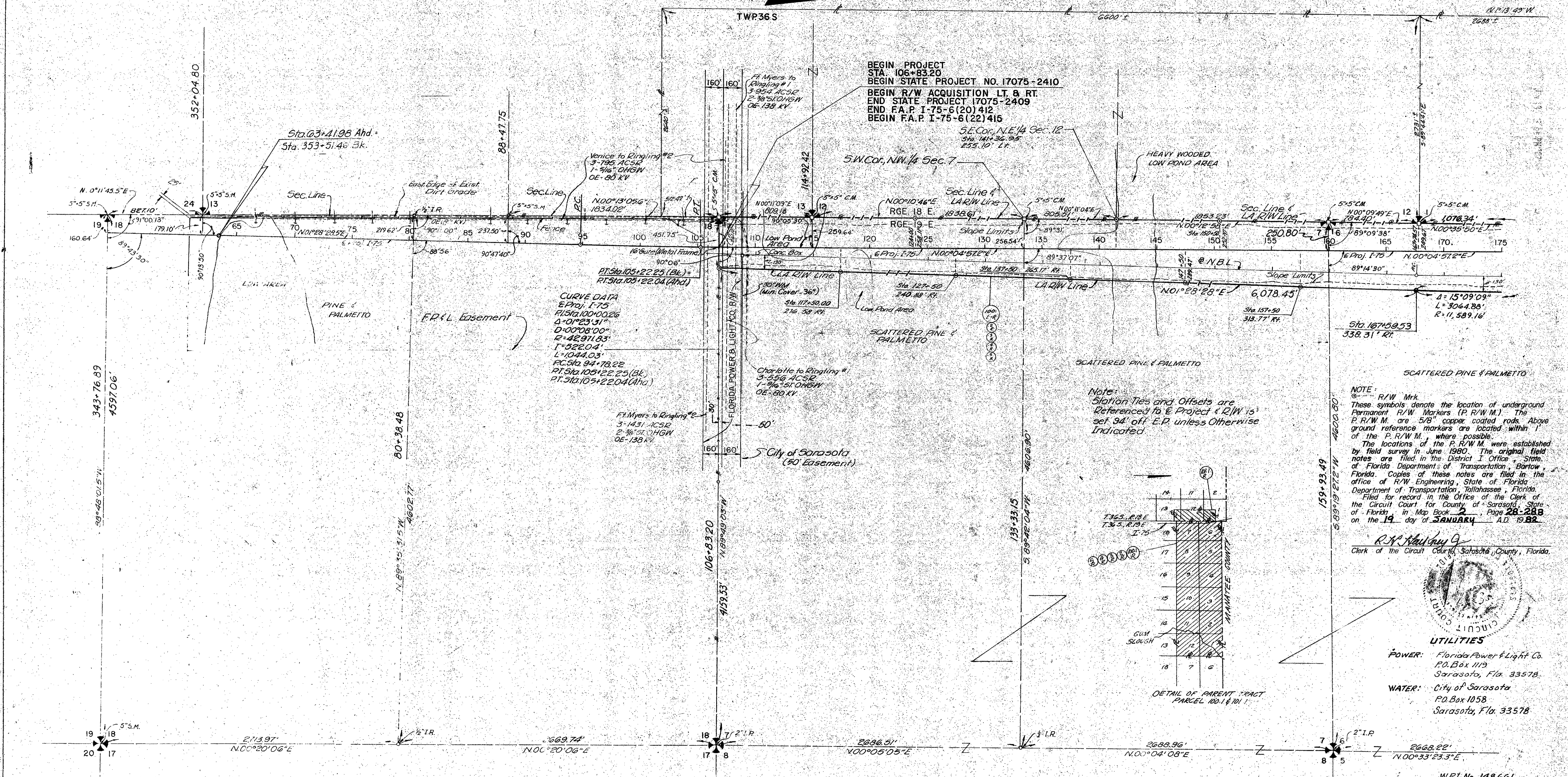


FED. ROAD DIV. No.	STATE	PROJECT No.	FISCAL YEAR	SHEET No.
3	FLA.	I-75-6(22)415		

STATE PROJECT NO. 17075-2410

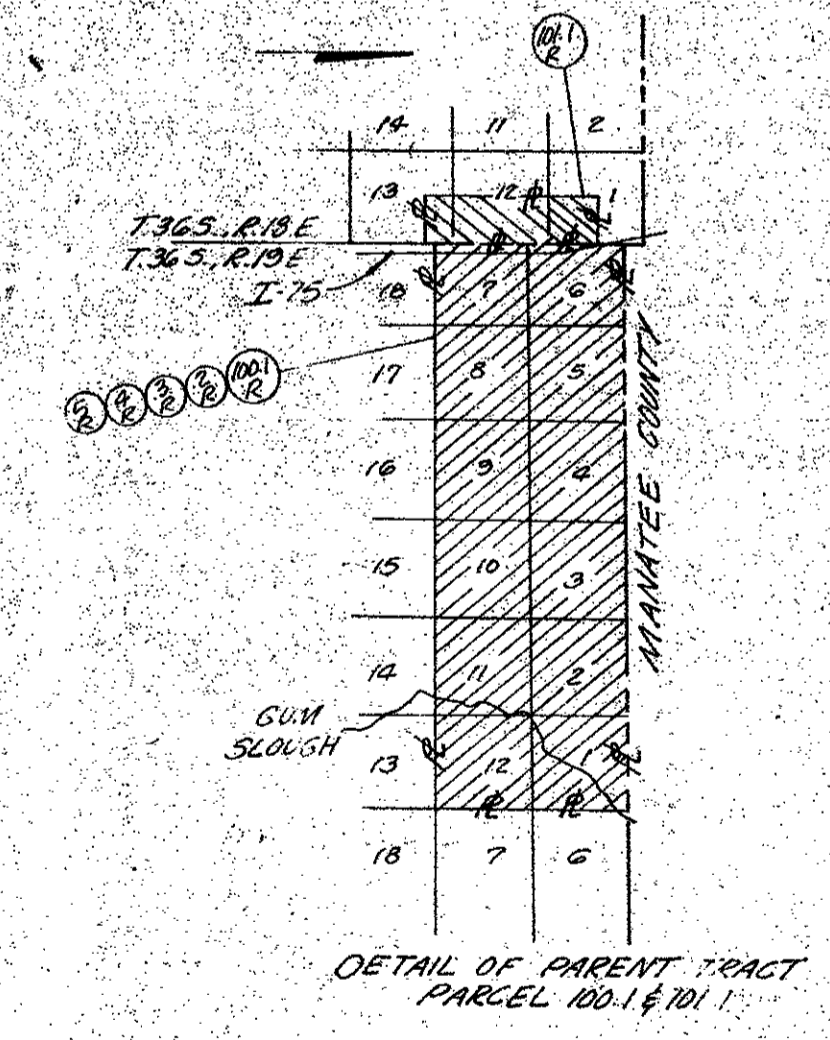
SCALE: 1"=400'



Note:  
 Station Ties and Offsets are  
 Referenced to E. Project R/W 15'  
 set 94' off E.P. unless Otherwise  
 Indicated

NOTE:  
 These R/W Mks.  
 These symbols denote the location of underground  
 Permanent R/W Markers (P.R.W.M.). The  
 P.R.W.M. are 5/8" copper coated rods. Above  
 ground reference markers are located within 1'  
 of the P.R.W.M., where possible.  
 The locations of the P.R.W.M. were established  
 by field survey in June 1980. The original field  
 notes are filed in the District I Office, State  
 of Florida Department of Transportation, Bartow,  
 Florida. Copies of these notes are filed in the  
 office of R.W. Engineering, State of Florida  
 Department of Transportation, Tallahassee, Florida.  
 Filed for record in the Office of the Clerk of the  
 Circuit Court for County of Sarasota, State  
 of Florida, in Map Book 2, Page 28-28B  
 on the 19 day of JANUARY A.D. 1982.

R.W. Anthony  
 Clerk of the Circuit Court, Sarasota County, Florida.



UTILITIES  
 POWER: Florida Power & Light Co.  
 P.O. Box 119  
 Sarasota, Fla. 33578.  
 WATER: City of Sarasota  
 P.O. Box 1058  
 Sarasota, Fla. 33578.

STATE OF FLORIDA  
 STATE ROAD DEPARTMENT

**RIGHT OF WAY MAP**

STATE ROAD No. 93(I-75)		SARASOTA COUNTY	
BY	DATE	APPROVED BY	DATE
TLH	4-72	C.W. Monte De Oca	
TRACED	TLH 4-72		
CHECKED	C.C.D. 1-75		
COMPARED			
INDEXED			
REVISION	BY	DATE	

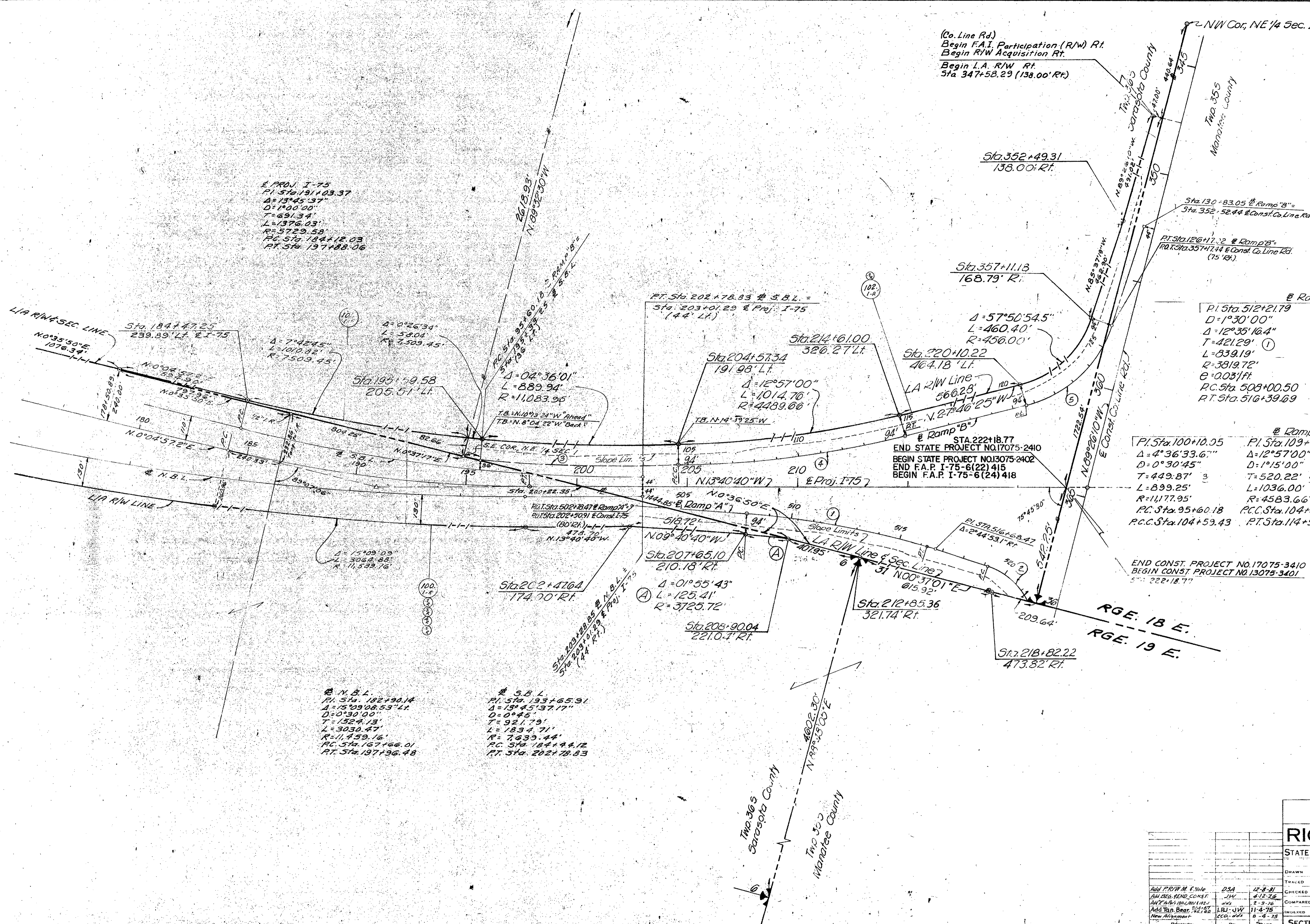


FED. ROAD DIV. No.	STATE	PROJECT No.	FISCAL YEAR	SHEET No.
3	FLA.	I-75-6(22)415		

STATE PROJECT NO. 17075-2410

FILED 3:30 PM '75  
MAR 13 3 06 PM '75  
SARASOTA COUNTY ENGINEER'S OFFICE

Scale: 1" = 200'



**Ramp "A"**

PI Sta. 512+21.79	PI Sta. 521+91.17
D = 1°30'00"	D = 18°28'57"
Δ = 12°35'16.4"	Δ = 82°36'54.3"
T = 421.29' ①	T = 272.41' ②
L = 839.19'	L = 446.99'
R = 3819.72'	R = 310.00'
E = 0.031/ft	E = 0.071/ft
P.C. Sta. 508+00.50	P.C. Sta. 519+18.75
P.T. Sta. 516+39.69	P.T. Sta. 523+65.74

**Ramp "B"**

PI Sta. 100+10.35	PI Sta. 109+79.65	PI Sta. 123+65.63
Δ = 4°36'33.6"	Δ = 12°57'00"	Δ = 57°50'54.5"
D = 0°30'45"	D = 1°15'00"	D = 10°25'03"
T = 449.87' ③	T = 520.22' ④	T = 303.92' ⑤
L = 899.25'	L = 1036.00'	L = 555.31'
R = 11177.95'	R = 4583.66'	R = 550.00'
P.C. Sta. 95+60.18	P.C. Sta. 104+59.43	P.C. Sta. 120+61.71
P.C.C. Sta. 104+59.43	P.T. Sta. 114+95.43	P.T. Sta. 126+17.02

Note:  
 --- R/W Mkt.  
 --- Symbol for Permanent  
 --- R/W Marker  
 See Sheet No. 1 for Details.

W.P.I. No. 148661

STATE OF FLORIDA STATE ROAD DEPARTMENT			
<b>RIGHT OF WAY MAP</b>			
STATE ROAD No. 93 (I-75)		SARASOTA	COUNTY
BY	DATE	APPROVED BY	DATE
DRAWN CULLIGAN	MAR 74	C.W. Monte De Rosa	
CHECKED C.C.D.	JAN 75		
COMPARED			
INCHES			
REVISION	BY	DATE	
SECTION 17075-2410		SHEET 3 OF 4	