

| FED. ROAD DIV. No. | STATE | PROJECT No. | FISCAL YEAR | SHEET No. |
|--------------------|-------|---------------|-------------|-----------|
| 3 | FLA. | I-75-6(10)410 | | |

"THIS RIGHT OF WAY MAP WHEN RECORDED IS AN INSTRUMENT OF TITLE CONVEYANCE, TRANSFERRING IN ACCORDANCE WITH FLORIDA STATUTES 337.29 (1977) ALL RIGHT, TITLE AND INTEREST OF THE FLORIDA DEPARTMENT OF TRANSPORTATION IN THE ACCESS ROADS CROSSHATCHED ONLY, SET FORTH ON THIS MAP TO Sarasota COUNTY."

RECORDED IN PUBLIC RECORDS OF SARASOTA COUNTY, FLORIDA, THIS 25TH DAY OF APRIL 1983 IN ROAD PLAT BOOK 2 PAGE 87-87B

R. W. ...
CLERK OF CIRCUIT COURT
SARASOTA COUNTY, FLORIDA

Scale: 1"=400'

5, 16, 17 & 18

CURVE DATA & I-75

| | |
|--|---|
| P.I. Sta. 133+00.00 Δ=1°45'24.41" RT. D=0°10'00" T=327.076' L=1054.068' R=29,377.468' P.C. Sta. 127+72.524 P.T. Sta. 133+26.954 | P.I. Sta. 130+51.961 Δ=2°35'42.66" LT. D=0°15'00" T=519.125' L=1038.073' R=22,918.312' P.C. Sta. 125+32.836 P.T. Sta. 135+70.009 |
|--|---|



NOTE FOR DETAIL OF INTERCHANGE SEE SHEET 31A

END R/W PROJECT 17075-2408 STA. 210+36.21
END CONST. PROJECT 17075-3408
BEGIN CONST. PROJECT 17075-3409

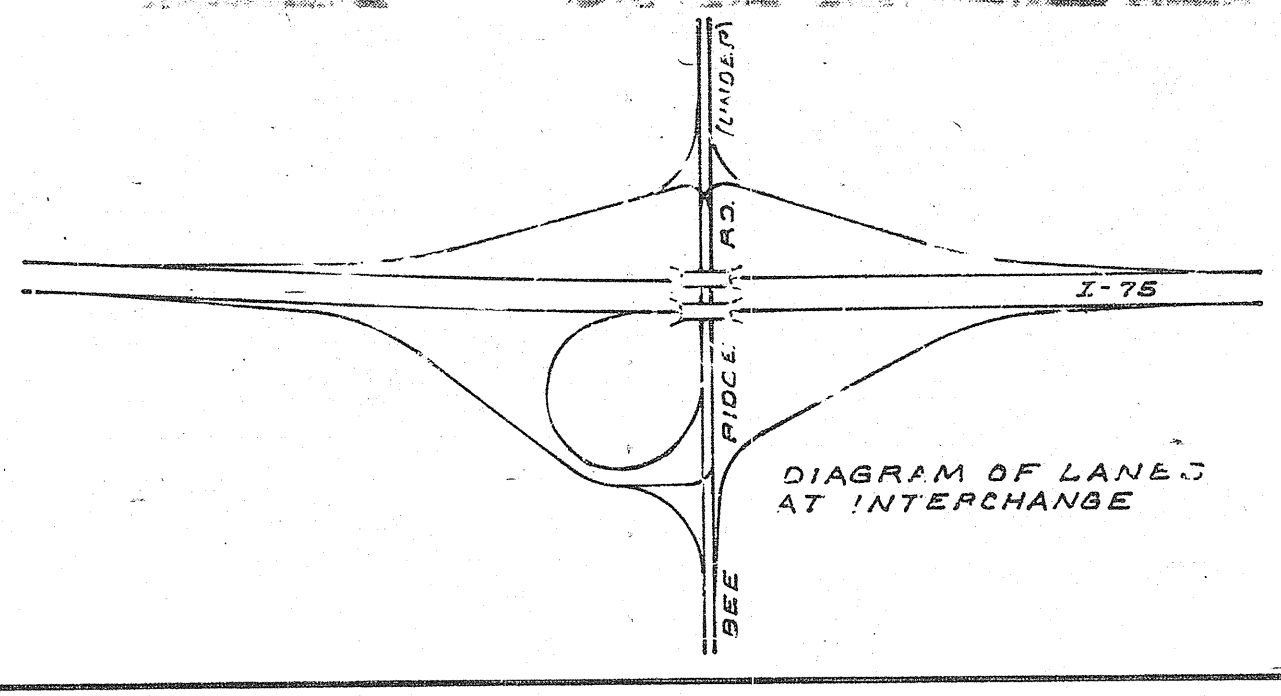
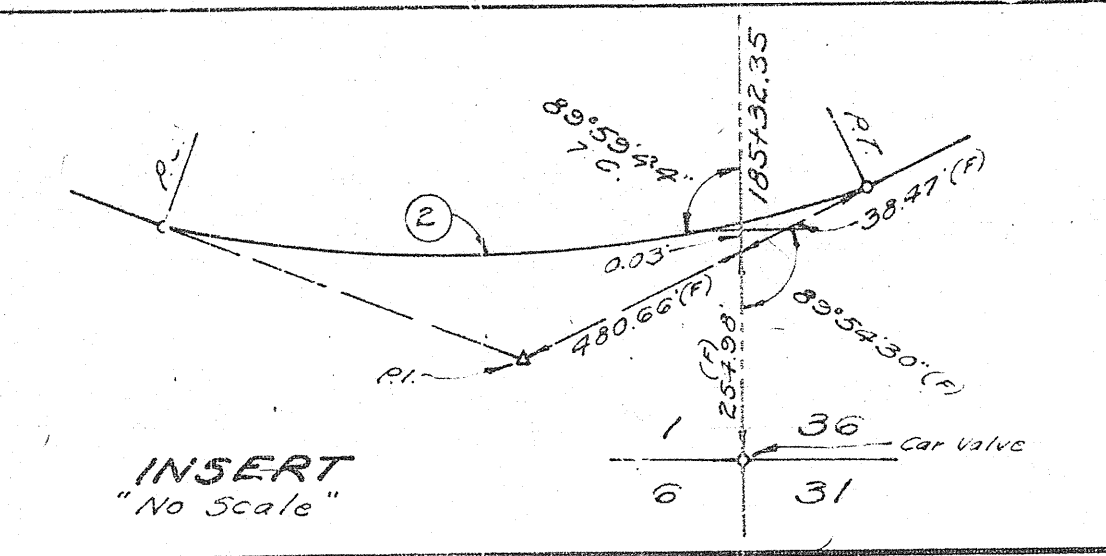
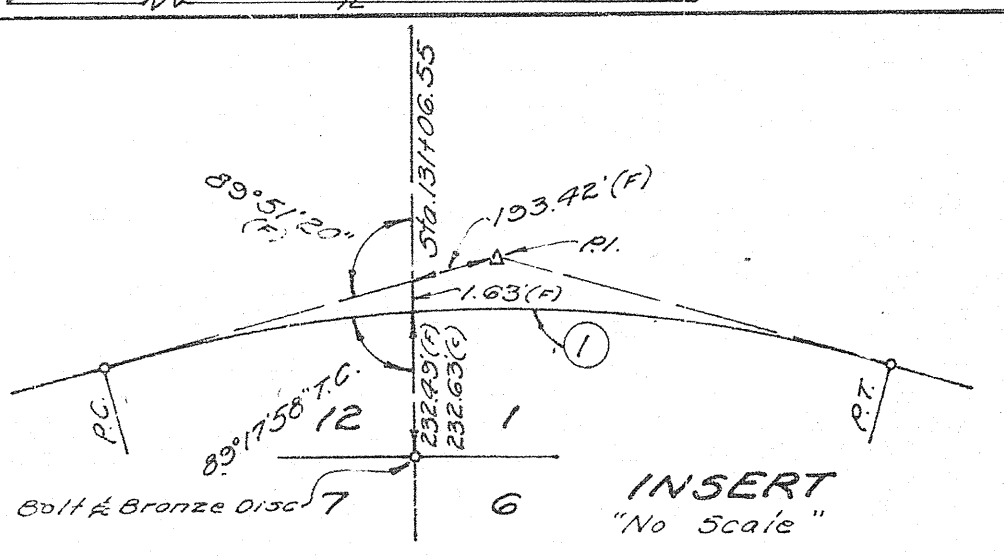
TRANSFER SHEET 1
FOR PARCEL TABULATION SEE SHEET 5

KEY MAP W.P.I. No. 148559

STATE OF FLORIDA
STATE ROAD DEPARTMENT
RIGHT OF WAY MAP
STATE ROAD No. 93(I-75) SARASOTA COUNTY

| REVISION | BY | DATE | APPROVED BY | DATE |
|----------|-------|------|-------------------|------|
| 1 | Ranew | 6-71 | C.W. Monte De Oca | |
| 2 | Ranew | 6-71 | Thomas C. Reas | |
| 3 | Saint | 6-71 | | |
| 4 | | | | |
| 5 | | | | |
| 6 | | | | |
| 7 | | | | |
| 8 | | | | |
| 9 | | | | |
| 10 | | | | |

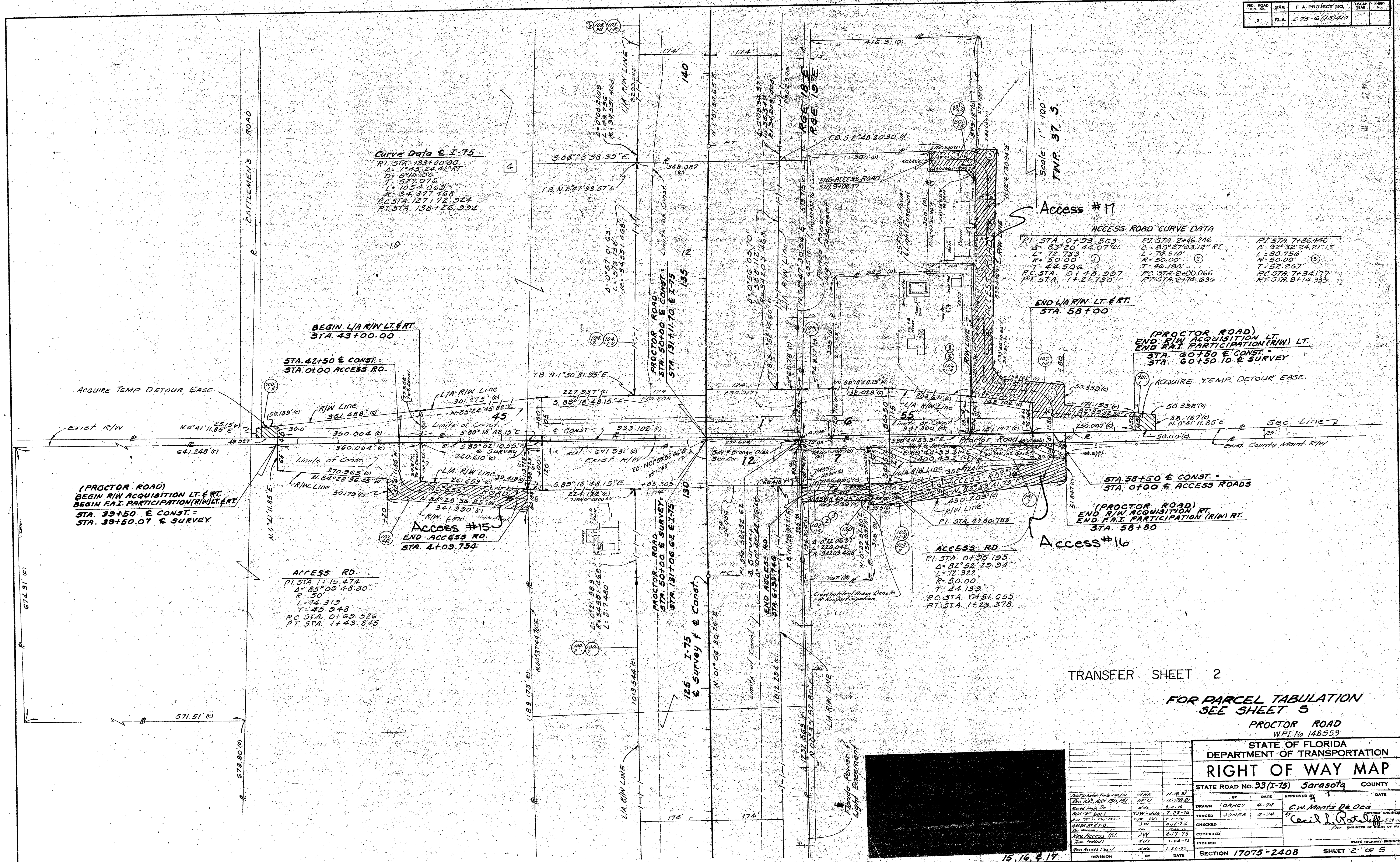
SECTION 17075-2408 SHEET 1 OF 5



UTILITY POWER OWNER FLORIDA POWER & LIGHT

Photo Date 1-13-69

| FIG. ROAD DIST. NO. | STATE | F A PROJECT NO. | FISCAL YEAR | SHEET NO. |
|---------------------|-------|-----------------|-------------|-----------|
| 3 | FLA. | I-75-6(18)A10 | | |



Curve Data & I-75
 P.I. STA. 133+00.00
 Δ = 1°45'24.41" RT
 D = 0°10'00"
 L = 527.016'
 T = 105.4062'
 R = 34,377.468'
 P.C. STA. 127+72.924
 P.T. STA. 138+26.994

ACCESS ROAD CURVE DATA

| | | |
|---|---|---|
| P.I. STA. 0+93.503 Δ = 83°20'44.07" LT L = 72.733' R = 50.00' T = 44.506' P.C. STA. 0+48.997 P.T. STA. 1+21.730 | P.I. STA. 2+46.246 Δ = 85°27'03.12" RT L = 74.570' R = 50.00' T = 46.180' P.C. STA. 2+00.066 P.T. STA. 2+74.636 | P.I. STA. 7+86.440 Δ = 92°32'24.21" LT L = 80.756' R = 50.00' T = 52.267' P.C. STA. 7+34.177 P.T. STA. 8+14.935 |
|---|---|---|

BEGIN LIA R/W LT. & RT.
 STA. 43+00.00

STA. 42+50 & CONST. =
 STA. 0+00 ACCESS RD.

ACCESS RD.
 P.I. STA. 1+15.474
 Δ = 85°00'48.30"
 D = 50'
 L = 74.313'
 T = 45.948'
 P.C. STA. 0+69.526
 P.T. STA. 1+43.845

Access #15
 END ACCESS RD.
 STA. 4+09.754

ACCESS RD
 P.I. STA. 0+55.195
 Δ = 82°52'29.34"
 L = 72.322'
 R = 50.00'
 T = 44.133'
 P.C. STA. 0+51.055
 P.T. STA. 1+23.378

Access #16

STA. 58+50 & CONST. =
 STA. 0+00 & ACCESS ROADS

(PROCTOR ROAD)
 END R/W ACQUISITION RT.
 END F.A.I. PARTICIPATION (R/W) RT.
 STA. 58+80

TRANSFER SHEET 2

FOR PARCEL TABULATION
 SEE SHEET 5

PROCTOR ROAD
 W.P.I. No. 148559

STATE OF FLORIDA
 DEPARTMENT OF TRANSPORTATION
RIGHT OF WAY MAP

| | | | |
|-------------------------|------------|-------------------|------|
| STATE ROAD No. 93(I-75) | | Sarasota COUNTY | |
| BY | DATE | APPROVED BY | DATE |
| DRAWN | DANCY 4-74 | C.W. Monts De Oca | |
| TRACED | JONES 4-74 | Cecil L. Rotiff | |
| CHECKED | | | |
| COMPARED | | | |
| INDEXED | | | |

| REVISION | BY | DATE |
|----------|----|------|
| | | |
| | | |

| FED. ROAD DIV. No. | STATE | F.A. PROJECT No. | FISCAL YEAR | SHEET No. |
|--------------------|-------|------------------|-------------|-----------|
| 3 | FLA. | I-75-6(18) 410 | | |

CURVE DATA & RAMP "A"

| | |
|------------------------------------|------------------------------------|
| PI STA. 70+90.370 | PI STA. 87+43.05 |
| $\Delta = 23^{\circ}11'45.13''$ RT | $\Delta = 35^{\circ}31'56.49''$ RT |
| D = 500.0' | D = 18^{\circ}28'57.03" |
| T = 235.393 | T = 163.211 |
| L = 463.751 | L = 300.439 |
| R = 1,145.916 | R = 310.000 |
| PC STA. 68+55.28 | PC STA. 84+42.34 |
| PT STA. 73+19.03 | PT STA. 88+43.30 |

CURVE DATA & RAMP "B"

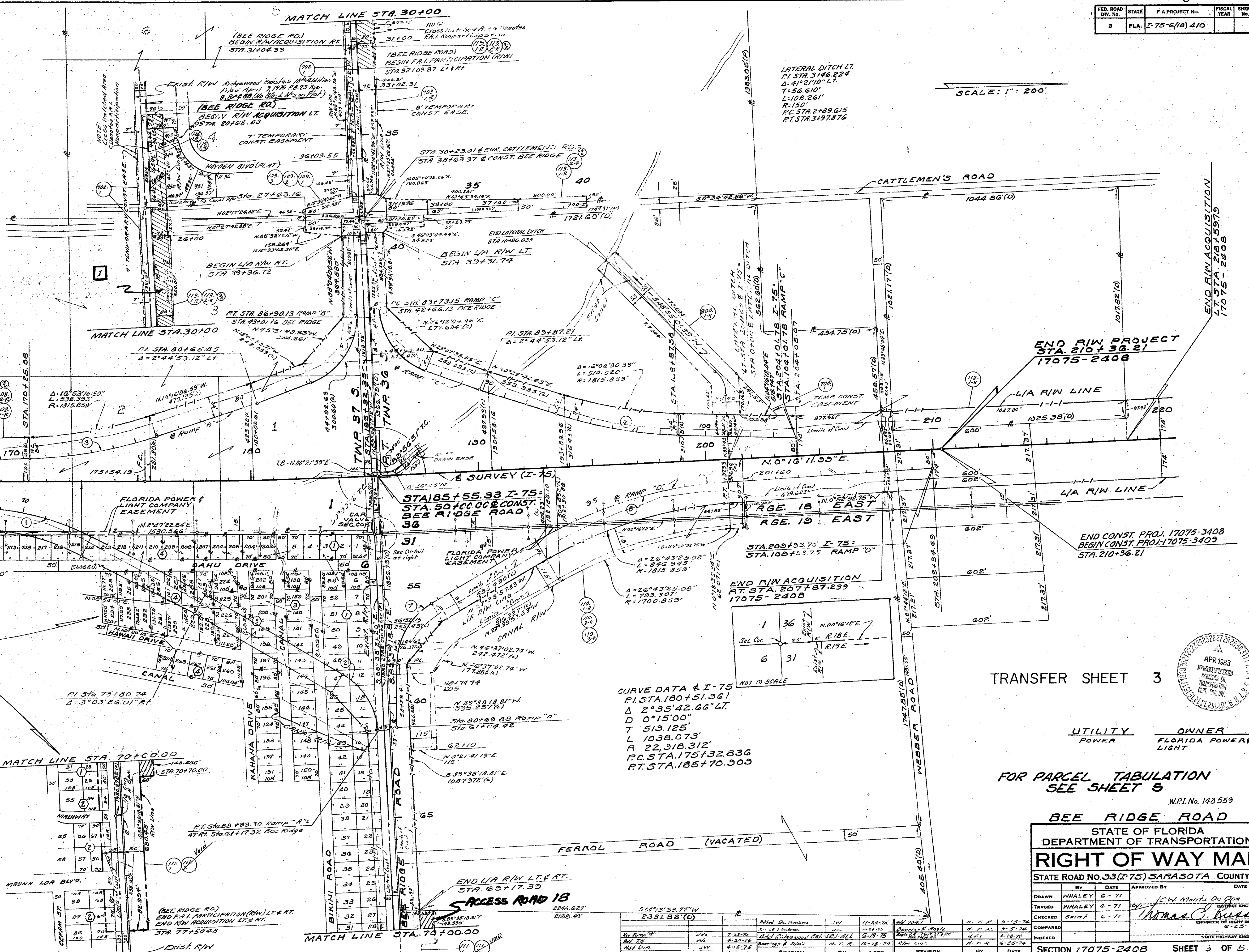
| | |
|------------------------------------|------------------------------------|
| PI STA. 73+12.324 | PI STA. 81+23.61 |
| $\Delta = 16^{\circ}53'16.50''$ LT | $\Delta = 35^{\circ}01'21.12''$ LT |
| D = 300.0' | D = 13^{\circ}23'57.03" |
| T = 285.225 | T = 210.257 |
| L = 566.264 | L = 373.993 |
| R = 1,909.859 | R = 310.000 |
| PC STA. 70+27.12 | PC STA. 83+16.14 |
| PT STA. 75+43.40 | PT STA. 86+49.13 |

CURVE DATA & RAMP "C"

| | |
|-----------------------------------|------------------------------------|
| PI STA. 85+73.25 | PI STA. 96+13.06 |
| $\Delta = 6^{\circ}11'41.25''$ LT | $\Delta = 13^{\circ}23'57.03''$ LT |
| D = 300.0' | D = 300.0' |
| T = 206.100 | T = 210.257 |
| L = 363.776 | L = 536.348 |
| R = 310.000 | R = 1,909.859 |
| PC STA. 83+73.15 | PC STA. 93+42.80 |
| PT STA. 87+36.33 | PT STA. 98+13.75 |

CURVE DATA & RAMP "D"

| | |
|-----------------------------------|------------------------------------|
| PI STA. 85+22.47 | PI STA. 96+13.06 |
| $\Delta = 5^{\circ}15'26.05''$ RT | $\Delta = 26^{\circ}32'25.08''$ RT |
| D = 18^{\circ}28'57.03" | D = 300.0' |
| T = 177.325 | T = 453.648 |
| L = 322.145 | L = 890.788 |
| R = 310.000 | R = 1,909.859 |
| PC STA. 83+45.14 | PC STA. 92+02.79 |
| PT STA. 86+67.23 | PT STA. 100+33.51 |



LATERAL DITCH LT.
 PI STA. 3+46.224
 $\Delta = 41^{\circ}21'10''$ LT
 T = 56.610
 L = 108.261
 R = 150'
 PC STA. 2+89.615
 PT STA. 3+97.876

SCALE: 1" = 200'

NOTE:
 FOR DETAIL
 SEE SHEET NO. 4

LAKE SARASOTA SUBD.
 UNIT NO. 1 RB. 8, PG. 50
 UNIT NO. 2 RB. 8, PG. 64
 UNIT NO. 3 RB. 8, PG. 65
 UNIT NO. 4 RB. 8, PG. 66
 UNIT NO. 5 RB. 8, PG. 67

CURVE DATA & I-75

| |
|-----------------------------------|
| PI STA. 180+51.961 |
| $\Delta = 2^{\circ}35'42.66''$ LT |
| D = 0°15'00" |
| T = 519.125' |
| L = 1038.073' |
| R = 22,318.312' |
| PC STA. 175+32.836 |
| PT STA. 185+70.303 |

TRANSFER SHEET 3

| UTILITY | OWNER |
|---------|-----------------------|
| POWER | FLORIDA POWER & LIGHT |

FOR PARCEL TABULATION
 SEE SHEET 5

W.P.I. No. 148559

BEE RIDGE ROAD

STATE OF FLORIDA
 DEPARTMENT OF TRANSPORTATION

RIGHT OF WAY MAP

STATE ROAD NO. 33 (I-75) SARASOTA COUNTY

| | | | |
|--------|------|-------------|------|
| BY | DATE | APPROVED BY | DATE |
| WHALEY | 6-71 | | |
| WHALEY | 6-71 | | |
| SPRING | 6-71 | | |

CHECKED: *Spring* 6-71
 COMPARED: *Spring* 6-71
 INDEXED: *Spring* 6-71

SECTION 17075-2408 SHEET 3 OF 5

