

Construction
 CURVE No. 16
 P.I. Sta. 52 + 78.39
 $\Delta = 4^{\circ}21'13''$ Lt.
 $D = 2^{\circ}00'00''$
 $T = 108.90$
 $L = 217.69$
 $R = 2,864.79'$
 P.C. Sta. 51 + 69.49
 P.T. Sta. 53 + 87.18

Construction
 CURVE No. 2
 P.I. Sta. 184 + 82.59
 $\Delta = 9^{\circ}58'26''$ Rt.
 $D = 1^{\circ}45'00''$
 $T = 285.69$
 $L = 569.94$
 $R = 3,274.05'$
 P.C. Sta. 181 + 96.90
 P.T. Sta. 187 + 66.84

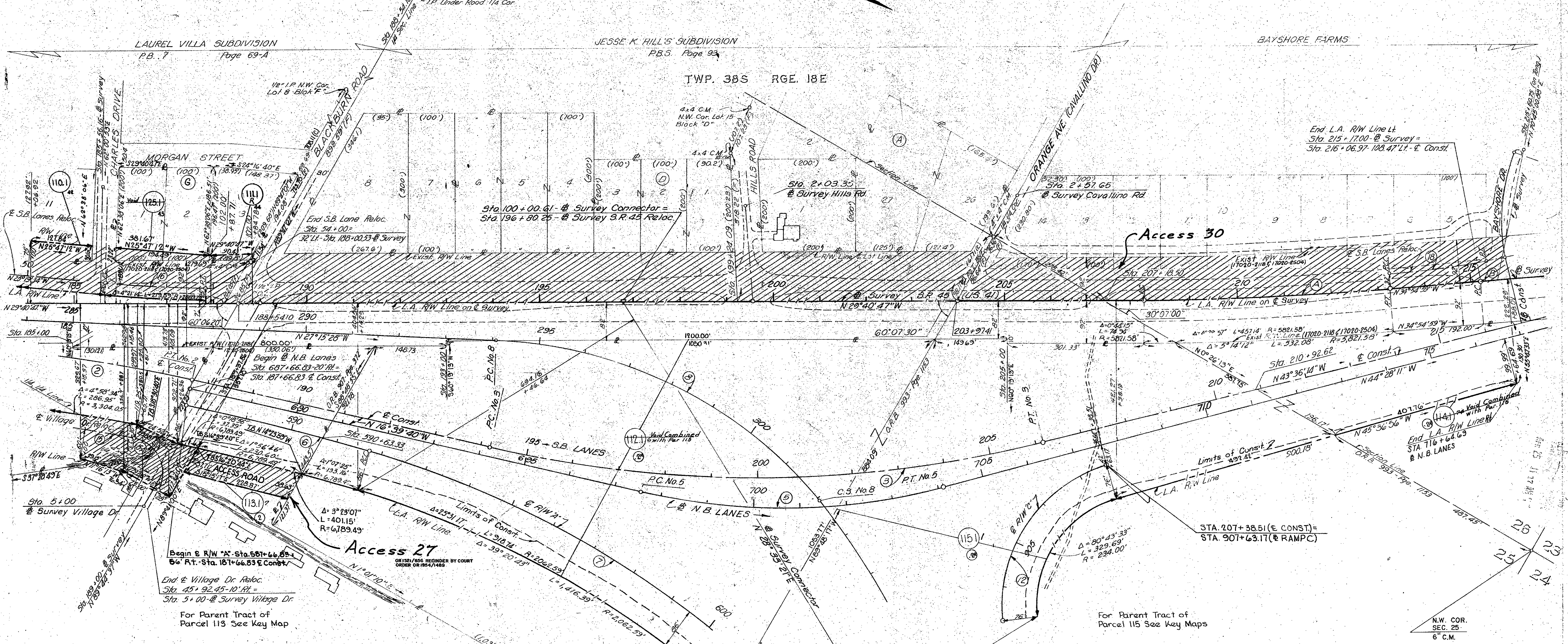
Construction
 CURVE No. 3
 P.I. Sta. 200 + 29.68
 $\Delta = 26^{\circ}56'34''$ Lt.
 $D = 2^{\circ}15'00''$
 $T = 610.01$
 $L = 1,197.46'$
 $R = 2,546.48'$
 P.C. Sta. 194 + 19.67
 P.T. Sta. 206 + 17.12

Ramp "B"
 CURVE No. 8
 P.I. Sta. 299 + 84.73
 $\Delta = 61^{\circ}28'51''$ Rt.
 $D = 1^{\circ}20'00''$
 $T = 424.37$
 $L = 799.68$
 $T_2 = 577.94$
 $L_2 = 450.00$
 $P.C. = 294 + 06.79$
 $C.S. = 302 + 06.47$
 $S.T. = 306 + 56.47$

S.B. Lanes Reloc.
 CURVE No. 18
 P.I. Sta. 51 + 09.75
 $\Delta = 5^{\circ}14'52''$ Lt.
 $D = 2^{\circ}50'57''$
 $T = 109.75$
 $L = 219.29$
 $R = 2,010.99'$
 P.C. Sta. 50 + 00.00
 P.T. Sta. 52 + 19.29

Survey
 CURVE "A"
 P.I. Sta. 210 + 63.35
 $\Delta = 5^{\circ}14'12''$ Lt.
 $D = 1^{\circ}00'00''$
 $T = 262.02$
 $L = 523.67$
 $R = 5,729.58'$
 P.C. Sta. 208 + 01.33
 P.T. Sta. 213 + 25.00

F-143-1(1)
 STATE PROJECT No. 17005-2501
 Survey
 CURVE "B"
 P.I. Sta. 217 + 77.47
 $\Delta = 5^{\circ}12'21''$ Rt.
 $D = 1^{\circ}00'00''$
 $T = 260.47$
 $L = 520.58$
 $R = 5,729.58'$
 P.C. Sta. 215 + 17.00
 P.T. Sta. 220 + 37.58



Const. Village Dr. Reloc.
 CURVE No. 15
 P.I. Sta. 41 + 89.63
 $\Delta = 7^{\circ}36'20''$ Rt.
 $D = 1^{\circ}45'00''$
 $T = 217.63$
 $L = 434.61$
 $R = 3,274.05'$
 P.C. Sta. 39 + 72.01
 P.C.C. Sta. 44 + 06.62

Const. Village Dr. Reloc.
 CURVE No. 15A
 P.I. Sta. 45 + 10.22
 $\Delta = 108^{\circ}11'40''$ Rt.
 $D = 103.60$
 $T = 141.63$
 $R = 75.00$
 P.C.C. Sta. 44 + 06.62
 P.T. Sta. 45 + 48.24

R/W "A"
 CURVE No. 6
 P.I. Sta. 589 + 70.00
 $\Delta = 3^{\circ}23'07''$ Rt.
 $D = 0^{\circ}50'00''$
 $T = 203.17$
 $L = 406.22$
 $R = 6,875.49'$
 P.C.C. Sta. 587 + 66.83
 P.C.C. Sta. 591 + 73.05

R/W "A"
 CURVE No. 7
 P.I. Sta. 599 + 41.20
 $\Delta = 39^{\circ}20'43''$ Rt.
 $D = 5^{\circ}40'00''$
 $T = 768.15$
 $L = 1,475.49$
 $R = 2,148.59'$
 P.C.C. Sta. 591 + 73.05
 P.T. Sta. 606 + 48.50

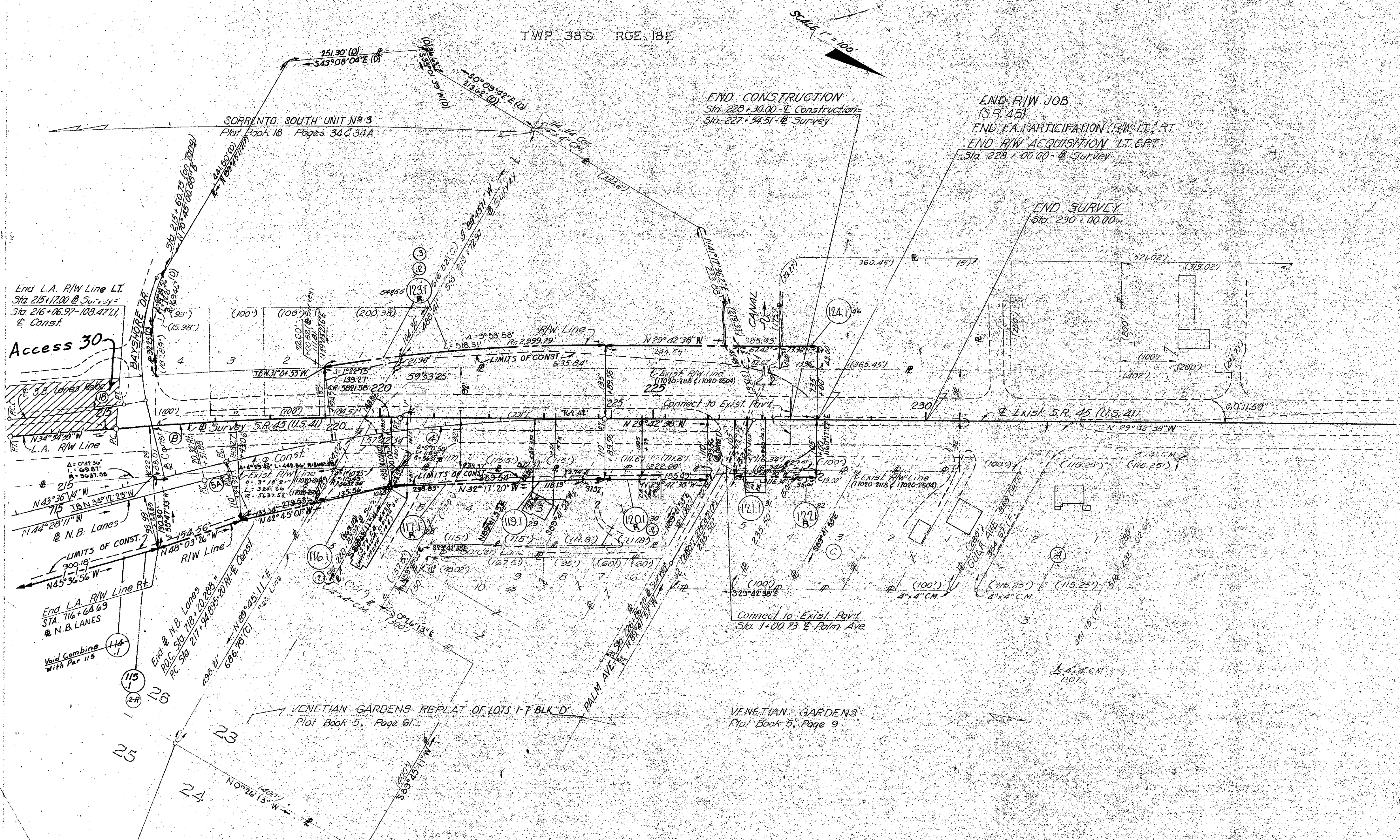
N.B. Lanes
 CURVE No. 5
 P.I. Sta. 700 + 91.83
 $\Delta = 27^{\circ}48'31''$ Lt.
 $D = 4^{\circ}15'00''$
 $T = 333.74$
 $L = 654.32$
 $R = 1,348.14$
 P.C. Sta. 697 + 58.09
 P.T. Sta. 704 + 12.41

R/W "C"
 CURVE No. 12
 P.I. Sta. 905 + 89.89
 $\Delta = 80^{\circ}43'33''$ Rt.
 $D = 18^{\circ}28'57''$
 $T = 263.49$
 $L = 436.77$
 $R = 310.00$
 P.C.C. Sta. 903 + 26.40
 P.T. Sta. 907 + 63.17

TRANSFER SHEET 2
 INSERT # 4
 S.R. 45 CONNECTOR - SR 45 to 1-75

FLORIDA DEPARTMENT OF TRANSPORTATION RIGHT OF WAY ENGINEERING SECTION			
STATE ROAD NO. 681		SARASOTA COUNTY	
BY	DATE	APPROVED BY	DATE
DRAWN A.F.	5-30-77	C.W. Moore	5-30-77
TRACED			
CHECKED R.R.	5-30-77		
MAPS PREPARED BY BEISWENGER HOCH & ASSOC.		FIELD BOOK NOS See note sheet # 1	
W.P.I. NO. 119022		SCALE 1" = 100'	
SECTION 17005-2501		SHEET 4 OF	

REVISION	BY	DATE
Void Per 125 Add R III	B.S.B. - D.V.C.	8-15-78
Void Access Rd	J.W.D.	7-11-78
Split 1111 Rd 1851	J.W.D.	6-20-78
Add N.R. Par. 113	J.W.D.	6-5-78
Control Changes	J.W.D.	10-6-78
Corrections	J.W.D.	9-20-77



S.W. COR. SEC. 24 6" C.M.

N.B. Lanes
 CURVE No. 5A
 P.I. Sta. 717+98.80
 $\Delta = 0^\circ 51' 57''$ Rt.
 D = 2° 00' 51"
 T = 21.50'
 L = 42.99'
 R = 2844.79'
 P.C. Sta. 717+77.30
 P.T. Sta. 718+20.29

S.B. Lanes Reloc.
 CURVE No. 18
 P.I. Sta. 51+09.75
 $\Delta = 6^\circ 14' 52''$ Lt.
 D = 2° 50' 57"
 T = 109.75'
 L = 219.29'
 R = 2,010.39'
 P.C. Sta. 50+00.00
 P.T. Sta. 52+19.29

Survey "B"
 CURVE "B"
 P.I. Sta. 217+77.47
 $\Delta = 5^\circ 12' 21''$ Rt.
 D = 1° 00' 00"
 T = 260.47'
 L = 520.58'
 R = 5,729.58'
 P.C. Sta. 215+17.00
 P.T. Sta. 220+37.58

Construction
 CURVE No. 4
 P.I. Sta. 221+43.94
 $\Delta = 13^\circ 53' 36''$ Rt.
 D = 2° 00' 00"
 T = 349.05'
 L = 694.67'
 R = 2,864.79'
 P.C. Sta. 217+94.89
 P.T. Sta. 224+89.56

TRANSFER SHEET 3

INSERT # 5
 SR. 45 CONNECTOR - SR. 45 to I-75

FLORIDA DEPARTMENT OF TRANSPORTATION RIGHT OF WAY ENGINEERING SECTION			
RIGHT OF WAY MAP			
STATE ROAD NO. 681		SARASOTA COUNTY	
BY	DATE	APPROVED BY	DATE
A.F.	5-30-11	<i>[Signature]</i>	
TRACED			
CHECKED	R.R.	5-30-11	
MAPS PREPARED BY BEISWENGER HOCH CASSOC.		FIELD BOOK NOS. See note sheet #1	
W.P.I. NO. 119072		SCALE 1" = 100'	
SECTION 17005-2501		SHEET 5 OF	

REVISION	BY	DATE
MAR 11, 2013, 122	JMD	6-20-78
General Changes	JMD	10-6-77
Combine 18	JMD	5-28-72