

FED. ROAD DIV. NO.	STATE	F.A. PROJECT NO.	FISCAL YEAR	SHEET NO.
1	FLA.	I-75-6(16) 404		

State Project No. 17075-2407

THIS TRANSFERS ACCESS ROADS CROSSHATCHED ONLY.

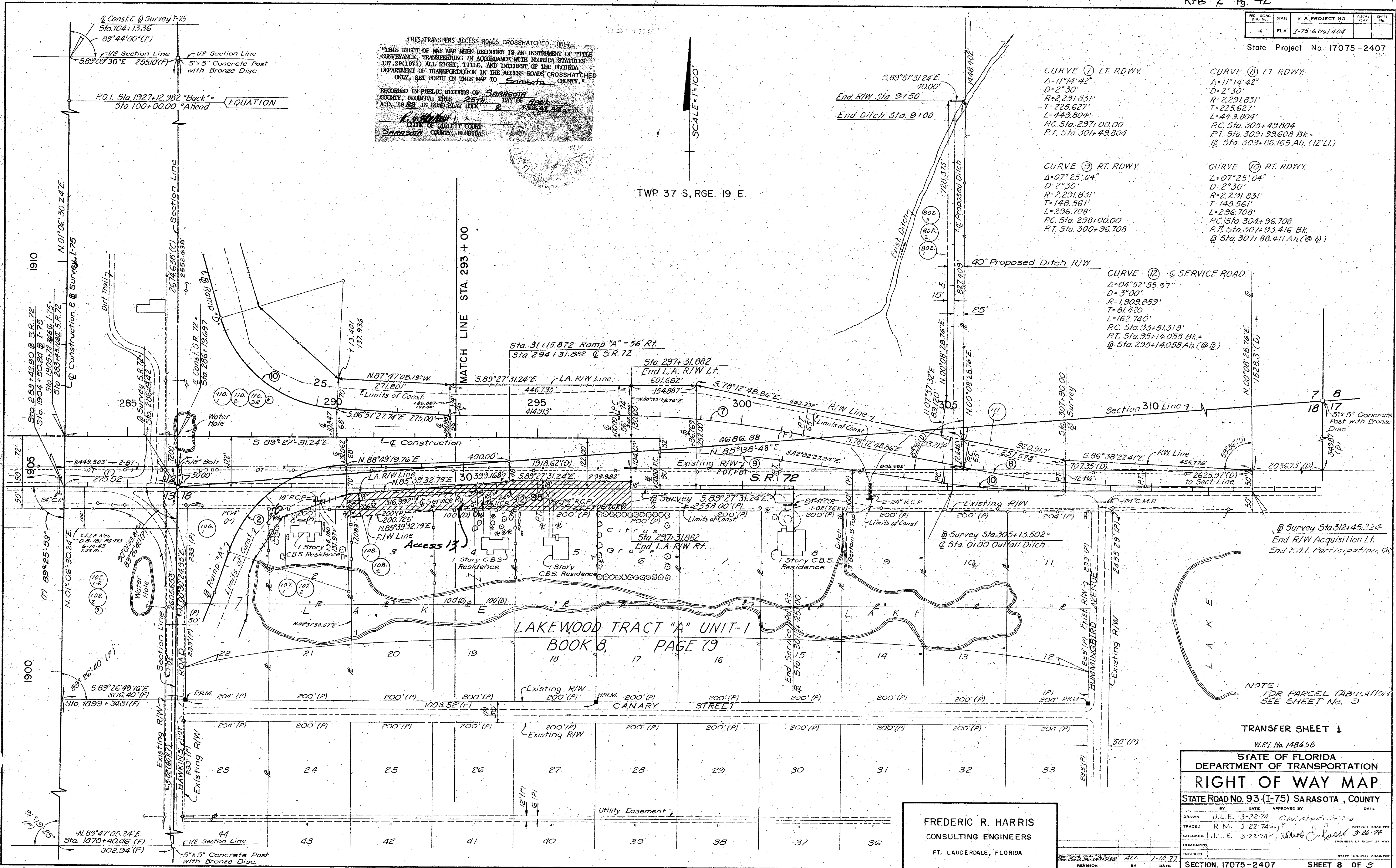
THIS RIGHT OF WAY MAP WHEN RECORDED IS AN INSTRUMENT OF TITLE CONVEYANCE, TRANSFERRING IN ACCORDANCE WITH FLORIDA STATUTES 337.29(1977) ALL RIGHT, TITLE, AND INTEREST OF THE FLORIDA DEPARTMENT OF TRANSPORTATION IN THE ACCESS ROADS CROSSHATCHED ONLY, SET FORTH ON THIS MAP TO Sarasota COUNTY, FLORIDA.

RECORDED IN PUBLIC RECORDS OF SARASOTA COUNTY, FLORIDA, THIS 25th DAY OF April, A.D. 1988 IN ROAD PLAT BOOK 2 PAGE 42, 43.

Frederic R. Harris
CONSULTING ENGINEERS
SARASOTA COUNTY, FLORIDA

SCALE = 1" = 100'

TWP 37 S, RGE. 19 E.



NOTE: FOR PARCEL TABULATION SEE SHEET No. 3

TRANSFER SHEET 1

W.P.I. No. 148658

STATE OF FLORIDA
DEPARTMENT OF TRANSPORTATION

RIGHT OF WAY MAP

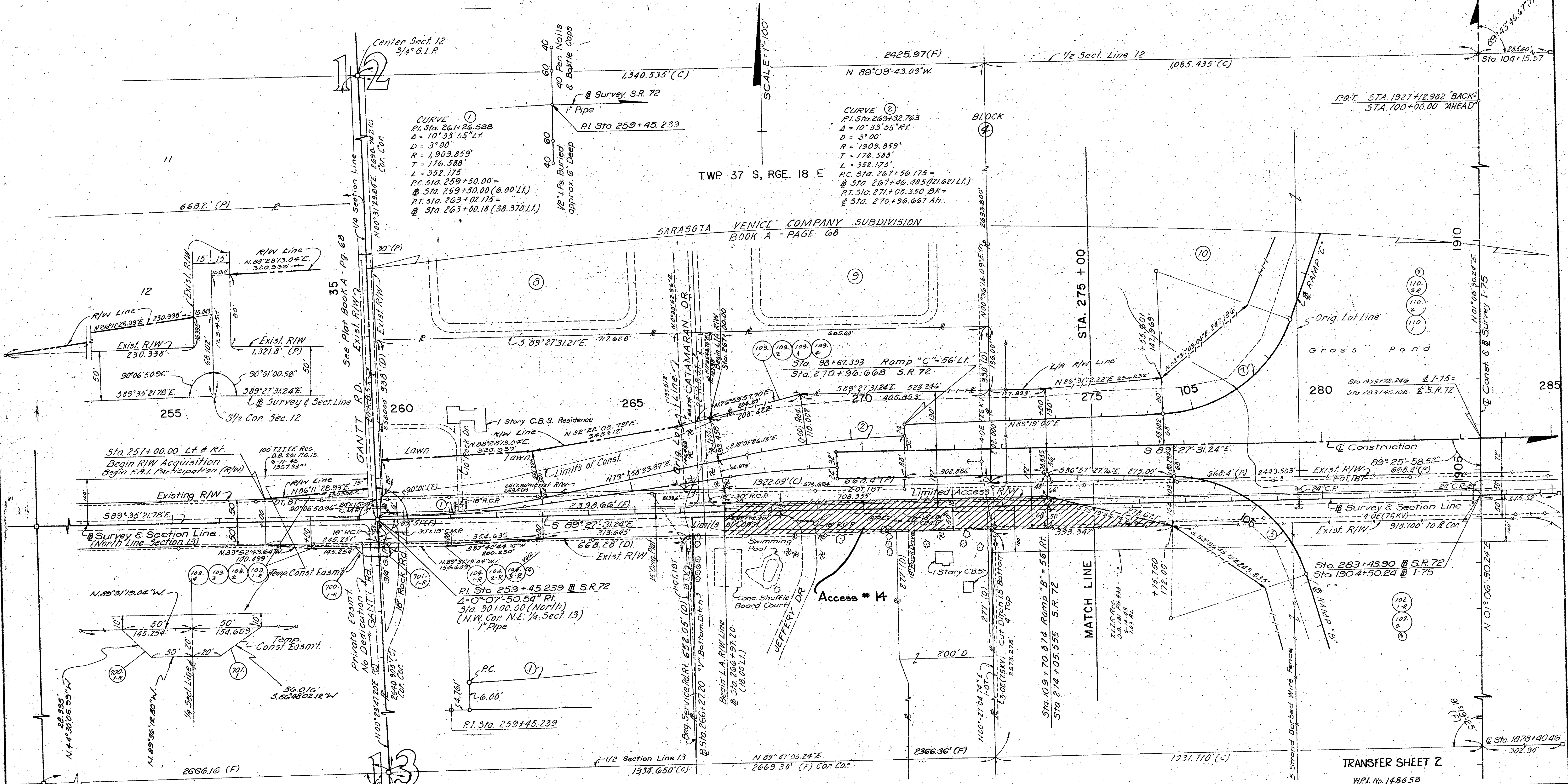
STATE ROAD No. 93 (I-75) SARASOTA, COUNTY

DRAWN	J.L.E. 3-22-74	APPROVED BY	DATE
TRACED	R.M. 3-22-74	DISTRICT ENGINEER	
CHECKED	J.L.E. 3-22-74	ENGINEER OF RIGHT OF WAY	
COMPARED			
INDEXED			

SECTION. 17075-2407 SHEET 8 OF 9

FREDERIC R. HARRIS
CONSULTING ENGINEERS
FT. LAUDERDALE, FLORIDA

REVISION	BY	DATE
ALL		1-10-77



SCALE = 1"=100'

TWP 37 S, RGE. 18 E

SARASOTA VENICE COMPANY SUBDIVISION
BOOK A - PAGE 68

STA. 275 + 00

MATCH LINE

TRANSFER SHEET 2
W.P.I. No. 148658

FIELD BOOKS
 886648 - 17075-1407-414
 886650 - 17075-1407-414
 886670 - 17075-1407-414

Note:
FOR PARCEL TABULATION
SEE SHEET No. 3

FREDERIC R. HARRIS
 CONSULTING ENGINEERS
 FT. LAUDERDALE, FLORIDA

STATE OF FLORIDA DEPARTMENT OF TRANSPORTATION	
RIGHT OF WAY MAP	
STATE ROAD NO 93 (I-75) SARASOTA, COUNTY	
BY	DATE
DRAWN J.L.E.	3-22-74
CHECKED A.R.	3-22-74
APPROVED BY	DATE
C.W. Monte De Leo	3-26-74
DISTRICT ENGINEER	
STATE ENGINEER OF RIGHT OF WAY	
SECTION 17075-2407 SHEET 7 OF 7	