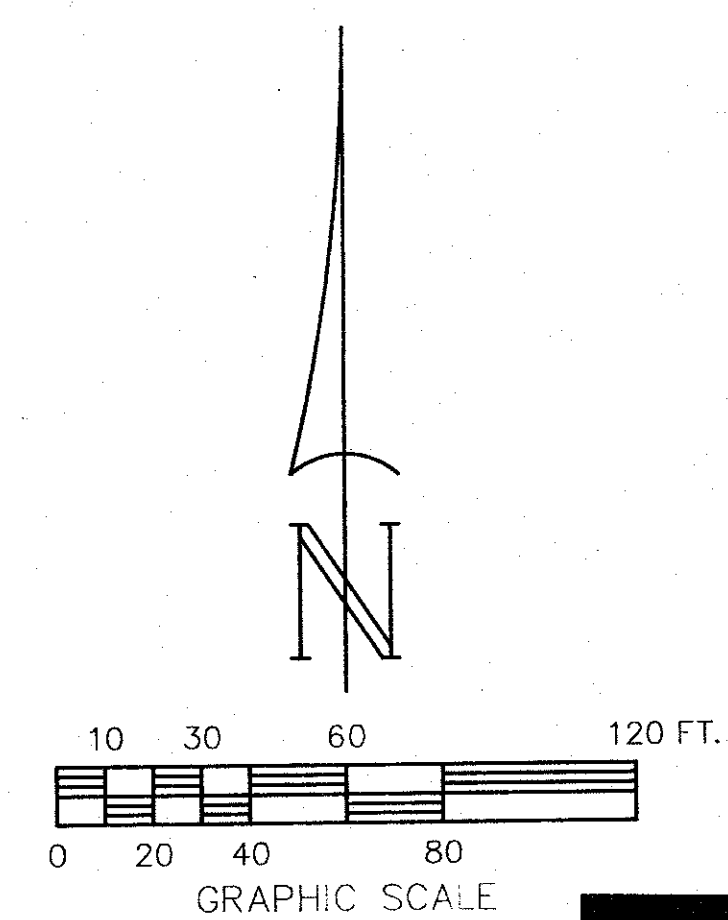
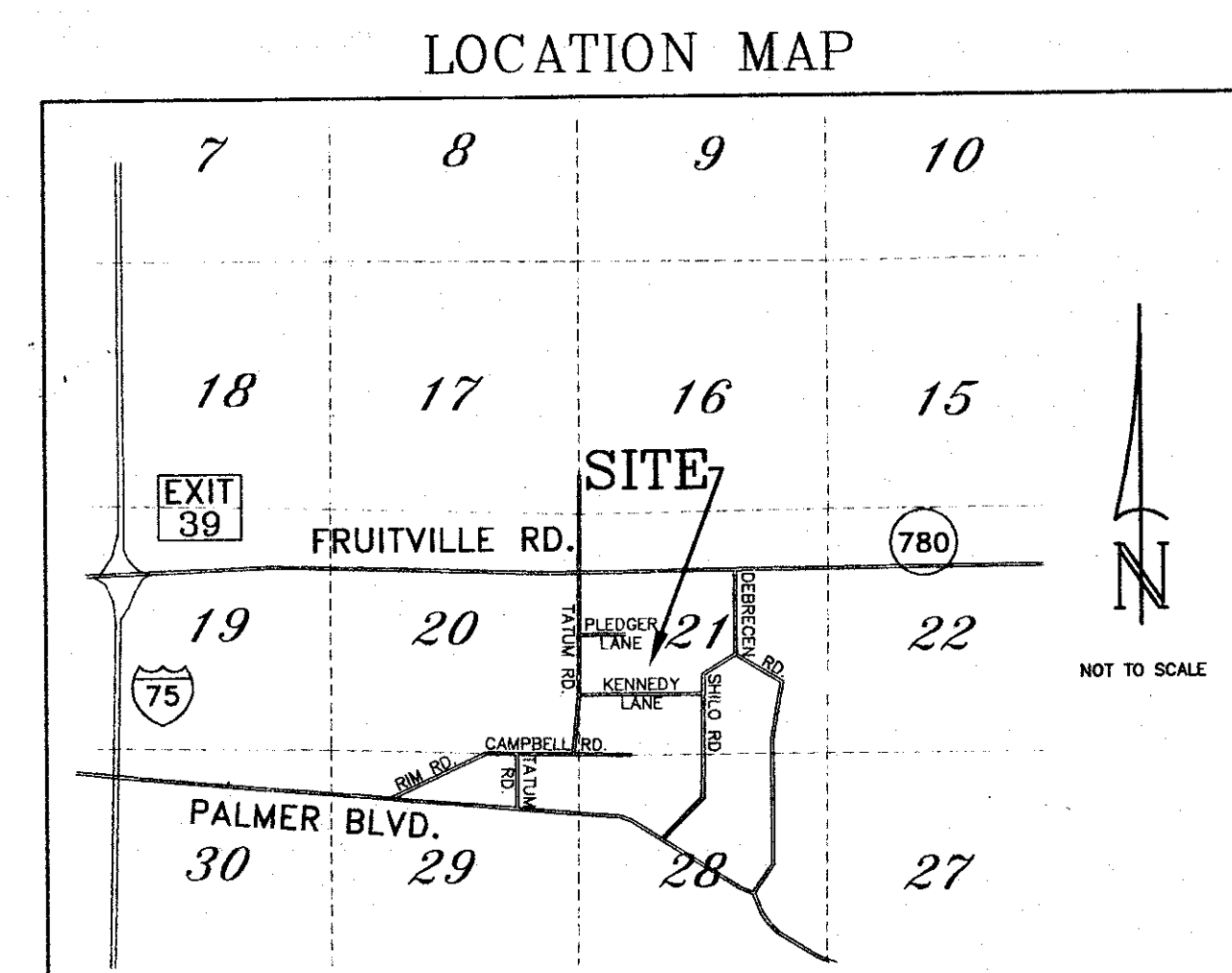
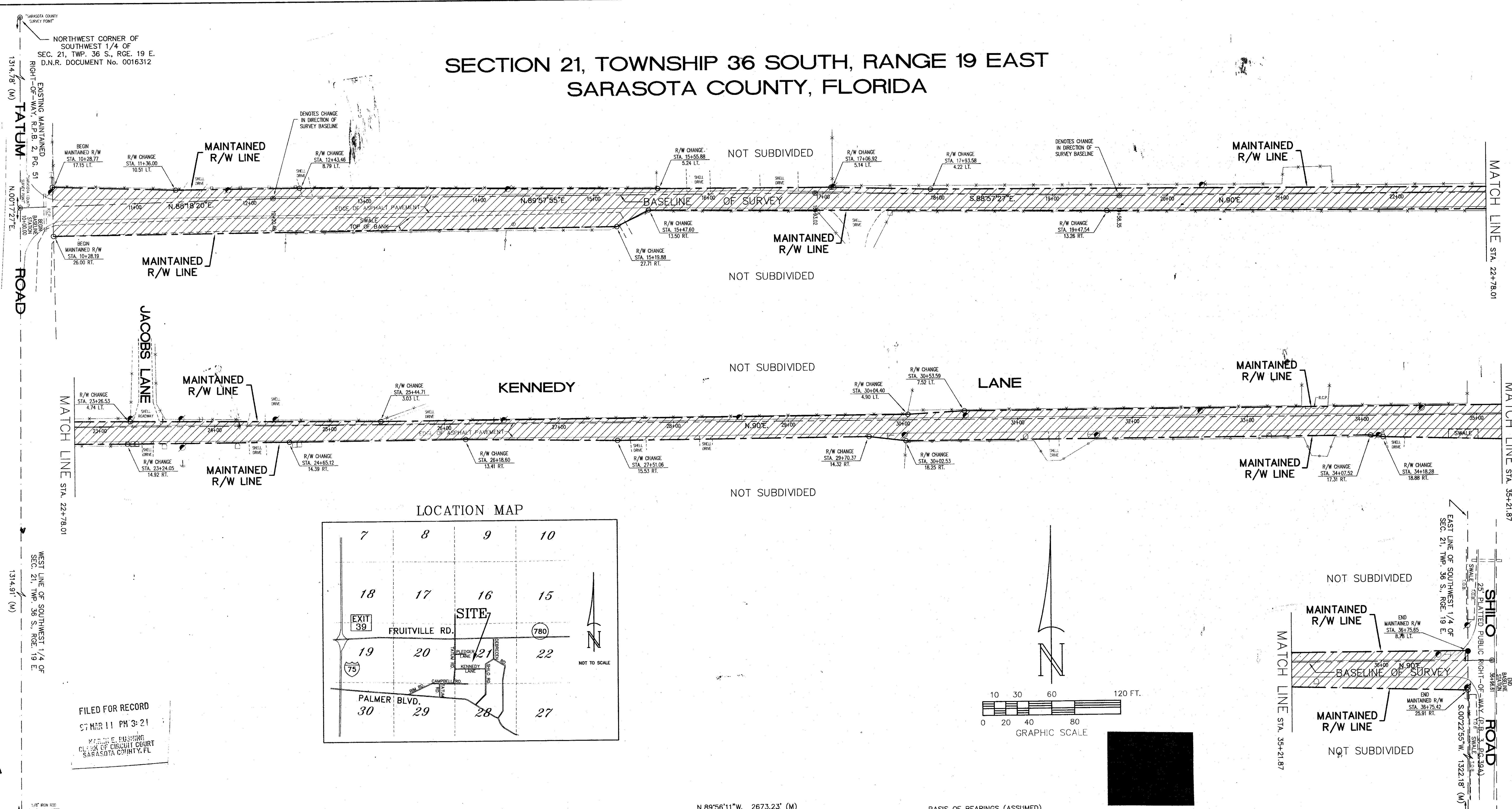


SECTION 21, TOWNSHIP 36 SOUTH, RANGE 19 EAST SARASOTA COUNTY, FLORIDA



NORTHWEST CORNER OF
SOUTHWEST 1/4 OF
SEC. 21, TWP. 36 S., RGE. 19 E.
D.N.R. DOCUMENT No. 0016312

WEST LINE OF SOUTHWEST 1/4 OF
SEC. 21, TWP. 36 S., RGE. 19 E.
D.N.R. DOCUMENT No. 0016313

SOUTHWEST CORNER
SEC. 21, TWP. 36 S., RGE. 19 E.
D.N.R. DOCUMENT No. 0016313

FILED FOR RECORD
MAY 11 PM 3:21
KAREN E. RUSHING
CLERK OF CIRCUIT COURT
SARASOTA COUNTY, FL

EAST LINE OF SOUTHWEST 1/4 OF
SEC. 21, TWP. 36 S., RGE. 19 E.
D.N.R. DOCUMENT No. 0016313

SOUTHEAST CORNER OF
SOUTHWEST 1/4 OF
SEC. 21, TWP. 36 S., RGE. 19 E.
SARASOTA COUNTY LAND CORNER REFERENCE SHEET NO. 624

THIS IS TO CERTIFY THAT THE NUMBERED SHEET ONE (1) OF ONE (1) CONSTITUTES
THE OFFICIAL MAINTENANCE MAP SHOWING THE LOCATION AND SURVEY BY
MOSEY ENGINEERING ASSOCIATES, INC. FOR KENNEDY LANE, BEING IN SECTION 21,
TOWNSHIP 36 SOUTH, RANGE 19 EAST, SARASOTA COUNTY, FLORIDA, PURSUANT
TO THE PROVISIONS OF CHAPTER 95.361, FLORIDA STATUTES OF 1991.

THIS IS TO CERTIFY THAT THIS MAINTAINED MAP WAS APPROVED BY
RESOLUTION NO. 95-248 PASSED AND ADOPTED BY THE
BOARD OF COUNTY COMMISSIONERS OF SARASOTA COUNTY, FLORIDA
ON THE 21ST DAY OF NOVEMBER A.D. 1995.

David R. Mills
CHAIRMAN

KAREN E. RUSHING, CLERK OF THE CIRCUIT COURT AND EX-OFFICIO
CLERK OF THE BOARD OF COUNTY COMMISSIONERS OF SARASOTA
COUNTY, FLORIDA BY
Wan Kay Garland
DEPUTY CLERK

THIS IS TO CERTIFY THAT THE LIMITS OF THE ROADWAY OUTSIDE
OF PLATTED RIGHT-OF-WAY AS SHOWN CROSS-HATCHED HEREON,
HAS BEEN MAINTAINED CONTINUOUSLY FOR OVER FOUR (4) YEARS.

John Fariss
JOHN FARISS
AREA SUPERINTENDENT
HIGHWAY MAINTENANCE

KAREN E. RUSHING
CLERK OF CIRCUIT COURT
SARASOTA COUNTY, FLORIDA
BY: *Elaine M. Hamel*
DEPUTY CLERK

- SYMBOL LEGEND**
- = 3/8" IRON ROD SET, "LB 6170"
 - = CAPPED IRON ROD FOUND, PLUS # AS NOTED
 - ⊙ = IRON PIPE FND
 - ⊕ = NAIL & DISK FOUND, NUMBER AS NOTED
 - ⊖ = R/R SPIKE FOUND
 - ⊗ = FIRE HYDRANT
 - ⊘ = WATER METER BOX
 - ⊙ = MAIL BOX
 - ⊕ = PK NAIL & DISC SET
 - ⊖ = CONCRETE UTILITY POLE
 - ⊗ = WOOD UTILITY POLE
 - ⊘ = GUY ANCHOR
 - ⊙ = STREET SIGN
 - ⊕ = ELECTRIC RISER
 - ⊖ = POWER LINE
 - ⊗ = ELECTRIC MANHOLE
 - ⊘ = CHAIN-LINK FENCE
 - ⊙ = BARBED WIRE FENCE
 - ⊕ = WOOD FENCE
 - ⊖ = TELEPHONE BOX

- ABBREVIATION LEGEND**
- R/W = RIGHT-OF-WAY
 - R.P.B. = ROAD PLAT BOOK
 - P.B. = PLAT BOOK
 - FND = FOUND
 - PC = PAGE
 - SEC. = SECTION
 - TWP. = TOWNSHIP
 - RGE. = RANGE
 - M = MEASURED
 - NO. = NUMBER
 - # = NUMBER
 - FL = FLORIDA
 - B = BASELINE
 - P = PLAT
 - STA = STATION
 - O.R.B. = OFFICIAL RECORDS BOOK
 - M/R/W = MAINTAINED RIGHT-OF-WAY
 - SARCO = SARASOTA COUNTY
 - FAC = FLORIDA ADMINISTRATIVE CODE
 - FS = FLORIDA STATUTES
 - C = CENTERLINE
 - D.N.R. = DEPARTMENT OF NATURAL RESOURCES
 - P.L.S. = PROFESSIONAL LAND SURVEYOR
 - DOC. = DOCUMENT
 - R/R SPIKE = RAILROAD SPIKE
 - OMP = CORRUGATED METAL PIPE
 - T.O.B. = TOP OF BANK
 - RCP = REINFORCED CONCRETE PIPE
 - RT. = RIGHT
 - LT. = LEFT

1. BEARINGS SHOWN HEREON ARE BASED ON THE SOUTH LINE OF THE SOUTHWEST 1/4 OF SECTION 21, BEARING N.89°56'11"W. (ASSUMED).
2. IMPROVEMENTS SUCH AS BUT NOT LIMITED TO UNDERGROUND UTILITIES, LANDSCAPE FEATURES, ETC., HAVE NOT BEEN LOCATED EXCEPT AS SHOWN.
3. MOSBY JOB No. 30962.11 (DRAWING No. 31182801)

N.89°56'11"W. 2673.23' (M)
BASIS OF BEARINGS (ASSUMED)
SOUTH LINE OF SOUTHWEST 1/4 OF
SEC. 21, TWP. 36 S., RGE. 19 E.

SURVEYOR'S CERTIFICATE

I HEREBY CERTIFY THAT THIS R/W MAP (SHEET 1-1) REPRESENTS A SURVEY OF THE
ROAD ALIGNMENT AS SHOWN HEREON, THAT THE SURVEY WAS RECENTLY PERFORMED UNDER
MY DIRECTION, AND THAT IT IS TRUE AND CORRECT TO THE BEST OF MY KNOWLEDGE
AND BELIEF, AND THAT THE SURVEY MEETS THE MINIMUM TECHNICAL STANDARDS AS SET
FORTH BY THE FLORIDA BOARD OF PROFESSIONAL LAND SURVEYORS IN CHAPTER 81C17-6,
F.A.C. PURSUANT TO SECTION 472.027, F.S. SUBJECT TO NOTES AND NOTATIONS SHOWN HEREON.

DATE OF SURVEY: APRIL 4, 1995
DATE MONUMENTS SET: APRIL 4, 1995

Ralph J. Rhodes
RALPH J. RHODES
FLORIDA CERTIFICATE LS 3659
MOSEY ENGINEERING ASSOCIATES, INC. - LB 6170 NOT VALID WITHOUT EMBOSSED SEAL

SARASOTA COUNTY TRANSPORTATION DEPARTMENT ENGINEERING DIVISION, SURVEY - MAPPING SECTION			
MAINTAINED RIGHT OF WAY MAP			
KENNEDY LANE FROM TATUM ROAD EASTERLY TO SHILO ROAD			
DRAWN	BY	DATE	
CHECKED	ETS	4-04-95	<i>John Fariss</i> 9/15/95
COMPARED			<i>John Fariss</i> 9/15/95
REF.			<i>John Fariss</i> 9/15/95
SCALE	1" = 40'	PROJECT NO.	C 94-320 WORK ASSIGNMENT 95-4
		SHEET	1 OF 1

B.C.C. RESO. 95-268 ORB 2893 682 0669 93