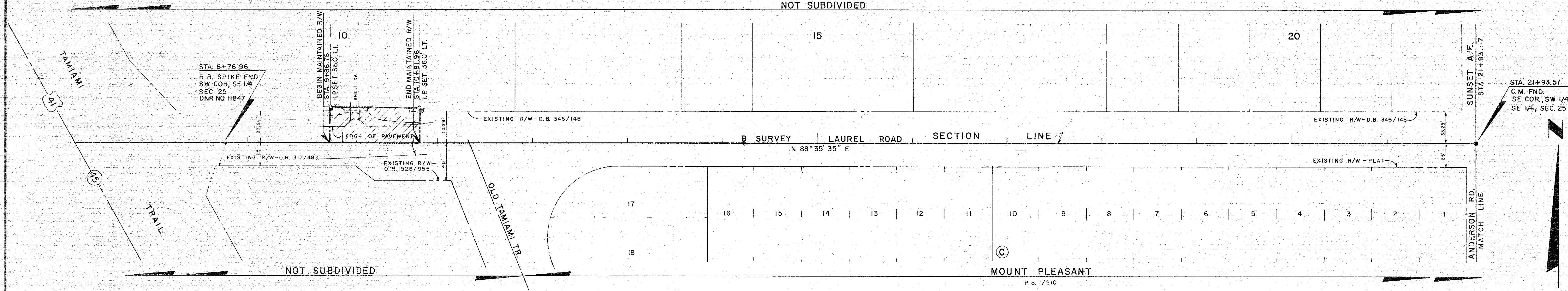


SEC. 25, TWP. 38 S, RGE. 18 E.

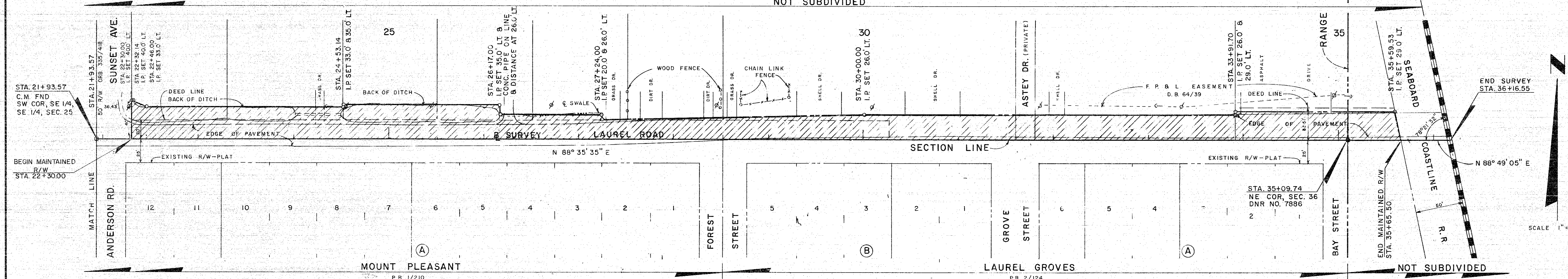
NOT SUBDIVIDED



SEC. 36, TWP. 38 S, RGE. 18 E.

SEC. 25, TWP. 38 S, RGE. 18 E.

NOT SUBDIVIDED



SEC. 36, TWP. 38 S, RGE. 18 E.

SEC. 31, TWP. 38 S, RGE. 19 E.

THIS IS TO CERTIFY THAT THE NUMBERED SHEET ONE (1) OF ONE (1) CONSTITUTES THE OFFICIAL MAINTENANCE MAP SHOWING THE LOCATION AND SURVEY BY THE SARASOTA COUNTY, FLORIDA, TRANSPORTATION DEPARTMENT FOR LAUREL ROAD LYING BETWEEN TAMIAMI TRAIL AND THE SEABOARD COASTLINE RAILROAD IN SECTIONS 25 AND 36, TOWNSHIP 38S, RANGE 18E, AND SECTIONS 30 AND 31, TOWNSHIP 38S, RANGE 19E, SARASOTA COUNTY, FLORIDA. THE PROPERTY SHOWN CROSS-MATCHED ON THIS MAP HAS BEEN VESTED IN SARASOTA COUNTY, FLORIDA, PURSUANT TO THE PROVISIONS OF CHAPTER 95.361, FLORIDA STATUTES OF 1985.

ACCEPTED FOR FILES AND RECORDED IN THE PUBLIC RECORDS OF SARASOTA COUNTY, FLORIDA, THIS 6 DAY OF January, A.D. 1986 IN ROAD PLAT BOOK 3, PAGE 20.

*John S. Ruckling*  
CLERK OF THE CIRCUIT COURT  
SARASOTA COUNTY, FLORIDA

THIS IS TO CERTIFY THAT THIS MAINTENANCE MAP WAS APPROVED BY RESOLUTION NO. 87-04 PASSED AND ADOPTED BY THE BOARD OF COUNTY COMMISSIONERS OF SARASOTA COUNTY, FLORIDA, ON THE 6th DAY OF January, A.D. 1987.

BOARD OF COUNTY COMMISSIONERS OF SARASOTA COUNTY, FLORIDA BY:

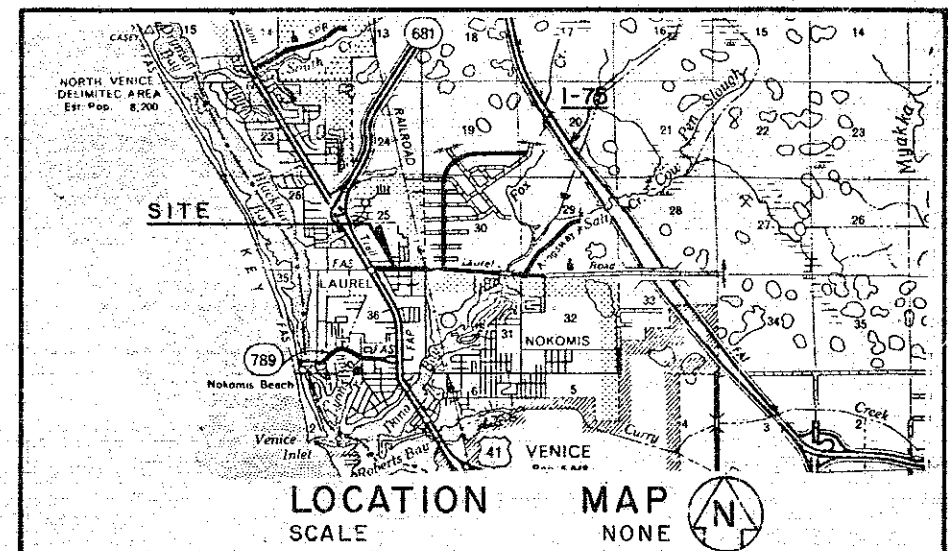
*Mary Carlston*  
CHAIRMAN

ATTEST:  
R. H. HACKNEY JR., CLERK OF THE CIRCUIT COURT AND EX-OFFICIO, CLERK OF THE BOARD OF COUNTY COMMISSIONERS OF SARASOTA COUNTY, FLORIDA BY:

*Suzann Thompson*  
DEPUTY CLERK

THIS IS TO CERTIFY THAT THE LIMITS OF THE ROADWAY OUTSIDE OF PLATTED RIGHT-OF-WAY, AS SHOWN CROSSHATCHED HEREON, HAS BEEN MAINTAINED CONTINUOUSLY FOR OVER FOUR (4) YEARS WITHOUT INTERRUPTION.

*Richard Christman*  
SUPERINTENDENT  
ROAD & BRIDGES DIVISION  
DATE 10-14-86



SURVEYOR'S CERTIFICATE

I HEREBY CERTIFY THAT THIS MAINTAINED R/W MAP REPRESENTS A BOUNDARY SURVEY OF THE ROAD AS SHOWN, THAT THE SURVEY WAS RECENTLY PERFORMED UNDER MY DIRECTION, AND THAT IT IS TRUE AND CORRECT TO THE BEST OF MY KNOWLEDGE AND BELIEF, AND THAT IT MEETS THE MINIMUM TECHNICAL STANDARD FOR LAND SURVEYING IN THE STATE OF FLORIDA (CH. 21HH-6, F.A.C.) EFFECTIVE SEPT. 1, 1981.

DATE OF SURVEY: 10-14-86  
*E. R. Emmons*  
E. R. EMMONS, COUNTY SURVEYOR  
PROFESSIONAL LAND SURVEYOR NO. 1867  
STATE OF FLORIDA  
1301 CATTLEMEN ROAD  
SARASOTA, FLORIDA 33582

12-18-86



SURVEYOR'S NOTES

1. BEARINGS SHOWN ARE BASED ON THE NORTH LINE, NE 1/4, SEC. 36-38-19 BEING N88°35'36" E.

LEGEND

- = Nail & Disk Set
- = Nail & Disk Fnd.
- = I.R. Set With Red Cap Stamped County R/W PLS 1867
- = I.R. Fnd.
- = R.R. Spike Set
- = R.R. Spike Fnd.
- = 1" x 2" Hub Set
- = 1" x 2" Hub Fnd.
- = Conc. Man. Set
- = Conc. Man. Fnd.
- = Water Valve
- = Utility Pole
- = G.T. & TV. Cable Box
- = G.T. Manhole
- = Light Pole
- = Fire Hydrant
- = Guy Wire

SARASOTA COUNTY TRANSPORTATION DEPARTMENT  
ENGINEERING DIVISION, CADASTRAL SECTION

**MAINTAINED  
RIGHT OF WAY MAP**

LAUREL ROAD  
TAMIAMI TRAIL TO S.C.L.R.R.

| BY       | DATE               | DATE     |          |
|----------|--------------------|----------|----------|
| DRAWN    | J. J. B.           | 10-15-86 | 12-18-86 |
| CHECKED  | <i>[Signature]</i> | 10-15-86 | 12-19-86 |
| COMPARED | J. R. J.           | 10-15-86 |          |

SCALE 1" = 50' PROJECT NO. 8431 SHEET 1 OF 1

B.C.C. RESO. 87-04 O.R.B. 1914 PG. 2150