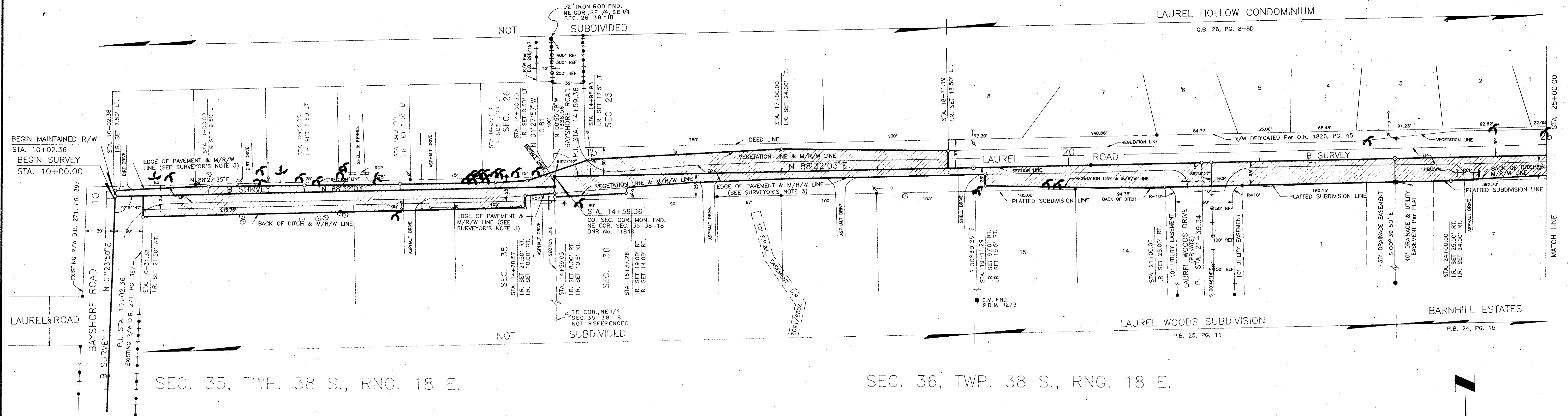


SEC. 26, TWP. 38 S., RNG. 18 E.

SEC. 25, TWP. 38 S., RNG. 18 E.



SEC. 35, TWP. 38 S., RNG. 18 E.

SEC. 36, TWP. 38 S., RNG. 18 E.

LEGEND OF ABBREVIATIONS

- AVE. = AVENUE
- B. = BASELINE
- BLK. = BLOCK
- BLVD. = BOULEVARD
- B.M. = BENCH MARK
- B.T.O.B. = BACK TOP OF BANK
- C.B. = CONDOMINIUM BOOK
- C.C.C.I. = COASTAL CONSTRUCTION CONTROL LINE
- CH. = CHORD
- CH.P. = CHAPTER
- CH. BRG. = CHORD BEARING
- CHP. = CHAPTER
- C.M. = CONCRETE MONUMENT
- C.M.P. = CORRUGATED METAL PIPE
- CO. = COUNTY
- CONDO. = CONDOMINIUM
- CONST. = CONSTRUCTION
- COR. = CORNER
- D.B. = DEED BOOK
- D.D. = DATA DRAWER
- D.N.R. = DEPARTMENT OF NATURAL RESOURCES
- D.O.T. = DEPARTMENT OF TRANSPORTATION
- DR. = DRIVE
- DRAIN. = DRAINAGE
- E. = EAST
- EASE. = EASEMENT
- EP. = EDGE OF PAVEMENT
- F.A.C. = FLORIDA ADMINISTRATIVE CODE
- F.B. = FIELD BOOK
- F.D.O.T. = FLORIDA DEPARTMENT OF TRANSPORTATION
- FL. = FLORIDA
- FND. = FOUND
- F.N. = FILE NUMBER
- F.P. & L. = FLORIDA POWER AND LIGHT
- G.T.E. = GENERAL TELEPHONE ELECTRIC
- IP. = IRON PIPE
- I.R. = IRON ROD
- L. = LENGTH
- LT. = LEFT
- M.H.W.L. = MEAN HIGH WATER LINE
- MON. = MONUMENT
- M/R/W. = MAINTAINED RIGHT-OF-WAY
- N. = NORTH
- N. & D. = NAIL AND DISC
- NE. = NORTH EAST
- N.G.V.D. = NATIONAL GEODETIC VERTICAL DATUM
- NO. = NUMBER
- N.O.S. = NATIONAL OCEAN SERVICE
- NW. = NORTHWEST
- O.A. = OVER ALL
- O/E. = OVERHEAD ELECTRIC
- O.R.B. = OFFICIAL RECORDS BOOK
- O.T. = ORDER OF TAKING
- P.B. = PLAT BOOK
- P.C. = POINT OF CURVATURE
- P.C.P. = PERMANENT CONTROL POINT
- PG. = PAGE
- P.I. = POINT OF INTERSECTION
- P. = PROPERTY LINE
- P.L.S. = PROFESSIONAL LAND SURVEYOR
- P.R.C. = POINT OF REVERSE CURVE
- P.R.M. = PERMANENT REFERENCE MONUMENT
- P.T. = POINT OF TANGENCY
- R. = RADIUS
- R.C.P. = REINFORCED CONCRETE PIPE
- RD. = ROAD
- REF. = REFERENCE
- RESUB. = RESUBDIVISION
- RNG. = RANGE
- R.P.B. = ROAD PLAT BOOK
- R.R. = RAILROAD
- RT. = RIGHT
- R/W. = RIGHT-OF-WAY
- S. = SOUTH
- SE. = SOUTHEAST
- SEC. = SECTION
- S.F.D.D. = SARASOTA-FRUITVILLE DRAINAGE DISTRICT
- S.R. = STATE ROAD
- ST. = STREET
- STA. = STATION
- SUB. = SUBDIVISION
- SW. = SOUTHWEST
- T. = TANGENT
- T.I.I.F. = TRUSTEES OF THE INTERNAL IMPROVEMENT FUND
- T.B. = TOP OF BANK
- TWP. = TOWNSHIP
- U/E. = UNDERGROUND ELECTRIC
- U.S. = UNITED STATES
- VEG. = VEGETATION
- W. = WEST

LEGEND

- = NAIL & DISK SET
- = NAIL & DISK FND.
- ⊙ = REF NAIL & DISC
- ⊙ = I.R. SET WITH RED CAP STAMPED COUNTY R/W PLS 1867
- = I.R. FND.
- ⊙ = RAILROAD SPIKE FND.
- ⊙ = HUB SET
- ⊙ = HUB FND.
- ⊙ = CONCRETE MONUMENT SET
- ⊙ = CONCRETE MONUMENT FND.
- ⊙ = WATER VALVE
- ⊙ = UTILITY POLE
- ⊙ = G.T. & T.V. CABLE BOX
- ⊙ = MANHOLE
- ⊙ = LIGHT POLE
- ⊙ = FIRE HYDRANT
- ⊙ = GUY WIRE
- ⊙ = PINE TREE
- ⊙ = PALM TREE
- ⊙ = REINFORCED CONCRETE PIPE
- ⊙ = WOOD FENCE

SURVEYOR'S NOTES

- BEARINGS SHOWN ARE BASED ON THE LAUREL ROAD RIGHT-OF-WAY MAP, U.S. 41 TO KNIGHTS TRAIL ROAD, SARASOTA COUNTY PROJECT NO. 8431
- A CHANGE OF JOG ON THE MAINTAINED RIGHT-OF-WAY LINE IS NOT NECESSARILY LOCATED AT AN INTERSECTING PROPERTY LINE.

THIS IS TO CERTIFY THAT THE NUMBERED SHEETS ONE (1) OF TWO (2) CONSTITUTES THE OFFICIAL MAINTENANCE MAP SHOWING THE LOCATION AND SURVEY BY THE SARASOTA COUNTY, FLORIDA, TRANSPORTATION DEPARTMENT FOR LAUREL ROAD LYING BETWEEN BAYSHORE ROAD AND TAMAMI TRAIL (U.S. 41), ALL BEING IN SECTIONS 25, 26, 35 AND 36, TOWNSHIP 38 SOUTH, RANGE 18 EAST, SARASOTA COUNTY, FLORIDA. THE PROPERTY SHOWN CROSS-HATCHED ON THIS MAP HAS BEEN VESTED IN SARASOTA COUNTY, FLORIDA, PURSUANT TO THE PROVISIONS OF CHAPTER 95.361, FLORIDA STATUTES OF

THIS IS TO CERTIFY THAT THIS MAINTAINED MAP WAS APPROVED BY RESOLUTION NO. 272-99 PASSED AND ADOPTED BY THE BOARD OF COUNTY COMMISSIONERS OF SARASOTA COUNTY, FLORIDA, ON THE 30th DAY OF OCTOBER, A.D. 1999.

Karen E. Rushing
VICE-CHAIRMAN

ATTEST:
KAREN E. RUSHING CLERK OF THE CIRCUIT COURT AND EX-OFFICIO CLERK OF THE BOARD OF COUNTY COMMISSIONERS OF SARASOTA COUNTY, FLORIDA BY:

Earl Van Ho
DEPUTY CLERK

THIS IS TO CERTIFY THAT THE LIMITS OF THE ROADWAY OUTSIDE OF PLATTED RIGHT-OF-WAY AS SHOWN CROSS-HATCHED HEREON, HAS BEEN MAINTAINED CONTINUOUSLY FOR OVER FOUR (4) YEARS WITHOUT INTERRUPTION.

Earl Van Ho 11-20-89
DATE

EARL VAN HO
DEPUTY DIRECTOR
HIGHWAY MAINTENANCE

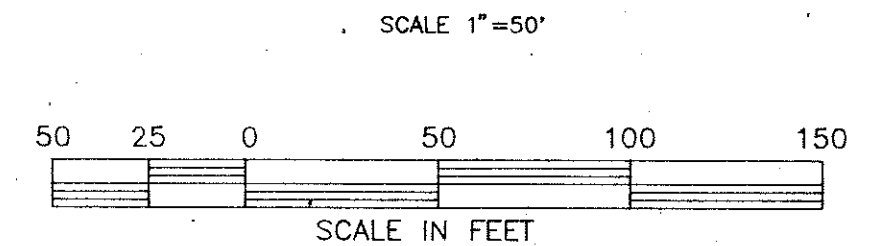
SURVEYOR'S CERTIFICATE

I HEREBY CERTIFY THAT THIS R/W MAP (SHEETS 1-2) REPRESENTS A SPECIFIC PURPOSE SURVEY OF THE ROAD AS SHOWN, THAT THE SURVEY WAS RECENTLY PERFORMED UNDER MY DIRECTION, AND THAT IT IS TRUE AND CORRECT TO THE BEST OF MY KNOWLEDGE AND BELIEF, AND THAT IT MEETS THE MINIMUM TECHNICAL STANDARDS FOR LAND SURVEYING IN THE STATE OF FLORIDA (CH. 21 HH-6, F.A.C.)

DATE OF SURVEY 12-28-89

E.R. Emerson 10-8-90
DATE

E.R. EMERSON, COUNTY SURVEYOR
PROFESSIONAL LAND SURVEYOR NO. 1867
STATE OF FLORIDA
1301 CATTLEMAN ROAD
SARASOTA, FLORIDA 34232-9631



ACCEPTED FOR FILES AND RECORDED IN THE PUBLIC RECORDS OF SARASOTA COUNTY, FLORIDA THIS 13th DAY OF MARCH, A.D. 1999, ROAD PLAT BOOK PAGE 32-32A

Earl Van Ho
CLERK OF THE CIRCUIT COURT
SARASOTA COUNTY, FLORIDA

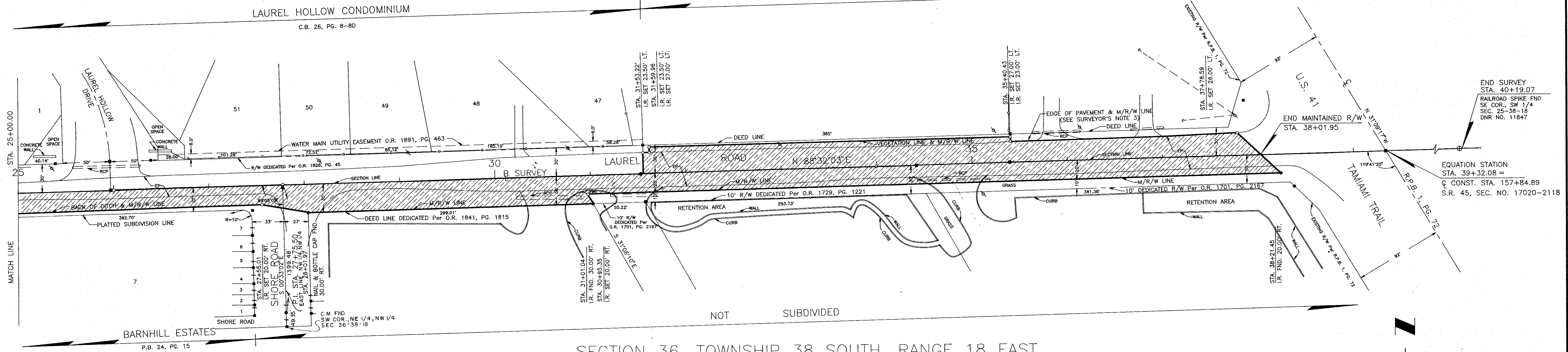
SARASOTA COUNTY TRANSPORTATION DEPARTMENT ENGINEERING DIVISION - SURVEY - MAPPING SECTION			
MAINTAINED RIGHT OF WAY MAP			
LAUREL ROAD BAYSHORE ROAD TO TAMAMI TRAIL (U.S. 41)			
DRAWN	BY	DATE	DATE
T. OWEN	T. OWEN	7-20-89	10-8-90
CHECKED	DATE	DATE	DATE
1-19-90	10-19-90	10-19-90	10-19-90
COMPIRED	DATE	DATE	DATE
12-29-89	10-29-89	10-29-89	10-29-89
REF.	D.D. 1, F.N. 3 F.B. 309, PG. 39, F.B. 330, PG. 7 BISHOP F.B. A-1, B-2	TRANSPORTATION DIRECTOR	DATE
SCALE	1" = 50'	PROJECT NO.	58040 (8712)
			SHEET 1 OF 2

PG 1319
CORR 2252
RESO. NO. R90-389
B.C.C.

SECTION 25, TOWNSHIP 38 SOUTH, RANGE 18 EAST

NOT SUBDIVIDED

LAUREL HOLLOW CONDOMINIUM
C.B. 26, PG. 8-8D

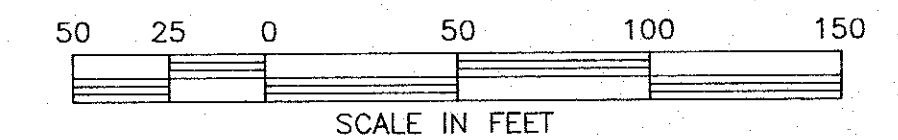


SECTION 36, TOWNSHIP 38 SOUTH, RANGE 18 EAST

NOT SUBDIVIDED

BARNHILL ESTATES
P.B. 24, PG. 15

SCALE 1"=50'



LEGEND

- = NAIL & DISK SET
- = NAIL & DISK FND.
- ◉ = REF. NAIL & DISC
- ◌ = I.R. SET WITH RED CAP STAMPED COUNTY R/W PLS 1867
- = I.R. FND.
- = RAILROAD SPIKE FND.
- △ = HUB SET
- ▲ = HUB FND.
- = CONCRETE MONUMENT SET
- = CONCRETE MONUMENT FND.
- ⊠ = WATER VALVE
- ⊞ = UTILITY POLE
- ⊞ = C.T. & T.V. CABLE BOX
- ⊞ = MANHOLE
- ⊞ = LIGHT POLE
- ⊞ = FIRE HYDRANT
- ⊞ = GUY WIRE
- ⊞ = OAK TREE
- ⊞ = PINE TREE
- ⊞ = PALM TREE
- ⊞ = WOOD FENCE

SARASOTA COUNTY TRANSPORTATION DEPARTMENT ENGINEERING DIVISION - SURVEY - MAPPING SECTION			
MAINTAINED RIGHT OF WAY MAP			
LAUREL ROAD BAYSHORE ROAD TO TAMIAMI TRAIL (U.S. 41)			
BY	DATE	DATE	
T. OWEN	7-20-89	10-8-90	
CHECKED	1-19-90	10-19-90	
COMPARED	12-29-89	10-20-90	
REF.	D.D. 1, F.N. 3 F.B. 308, PG. 39, EB. 330, PG. 7 BISHOP F.B. A-1, B-2	TRANSPORTATION DIRECTOR	
SCALE	1" = 50'	PROJECT NO.	88040 (8712)
			SHEET 2 OF 2