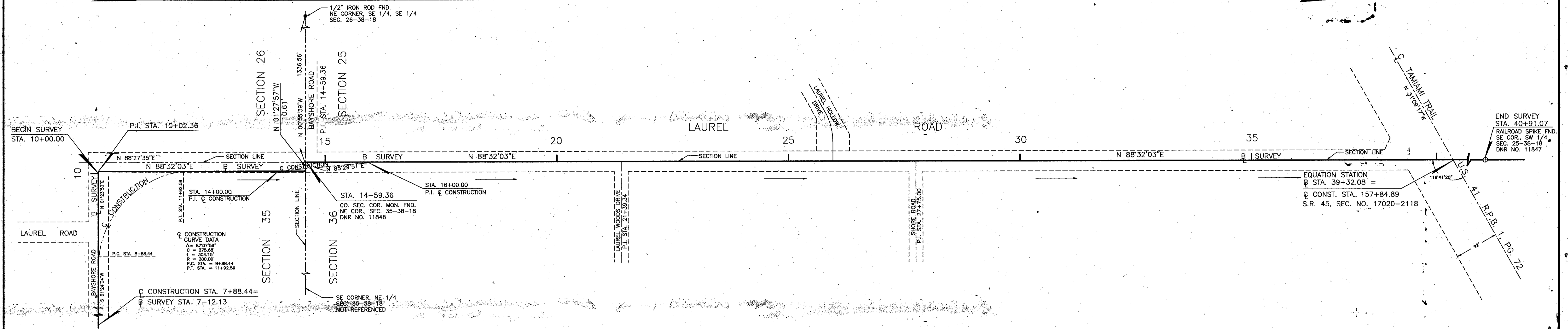


SECTION 26,
TWP. 38 S., RNG. 18 E.

SECTION 25, TOWNSHIP 38 SOUTH, RANGE 18 EAST

SEE SHEET 1



SECTION 35,
TWP. 38 S., RNG. 18 E.

SECTION 36, TOWNSHIP 38 SOUTH, RANGE 18 EAST

SURVEYOR'S NOTES

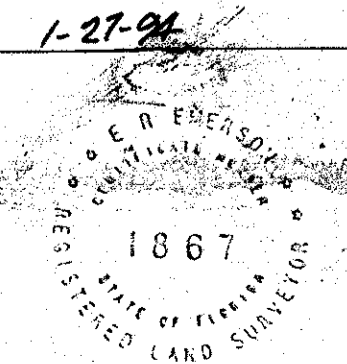
- BEARINGS SHOWN ARE BASED ON THE LAUREL ROAD RIGHT-OF-WAY MAP, U.S. 41 TO KNIGHT'S TRAIL ROAD, SARASOTA COUNTY PROJECT NO. 8431.
- A CHANGE OF JOBS ON THE MAINTAINED RIGHT-OF-WAY LINE IS NOT NECESSARILY LOCATED AT AN INTERSECTING PROPERTY LINE.
- THE EDGE OF PAVEMENT IS THE MAINTAINED RIGHT-OF-WAY LINE. SURVEY MARKERS WERE NOT SET AT ALL ANGLE BREAKS AT THE EDGE OF PAVEMENT.
- Ø = RIGHT-OF-WAY MARKER INSTALLED WITH THE ROAD CONSTRUCTION PROJECT, NO. 5 REBAR WITH 2" ALUMINUM DISK STAMPED R/W P.L.S. NO. 1867.

SURVEYOR'S CERTIFICATE

I HEREBY CERTIFY THAT THIS R/W MAP (SHEETS 1-2) REPRESENTS A SPECIFIC PURPOSE SURVEY OF THE ROAD AS SHOWN, THAT THE SURVEY WAS RECENTLY PERFORMED UNDER MY DIRECTION, AND THAT IT IS TRUE AND CORRECT TO THE BEST OF MY KNOWLEDGE AND BELIEF, AND THAT IT MEETS THE MINIMUM TECHNICAL STANDARDS FOR LAND SURVEYING IN THE STATE OF FLORIDA (CH. 21 HH-5, F.A.C.).

DATE OF SURVEY 1-3-89

[Signature]
E.R. EMERSON, COUNTY SURVEYOR
PROFESSIONAL LAND SURVEYOR NO. 1867
STATE OF FLORIDA
1301 CATTLEMAN ROAD
SARASOTA, FLORIDA 34232-9631



FILE FOR RECORD IN ROAD PLAT BOOK 4, AT PAGES 26-26A
OF THE PUBLIC RECORDS OF SARASOTA COUNTY, FLORIDA,
THIS 14TH DAY OF DECEMBER, A.D. 1999.

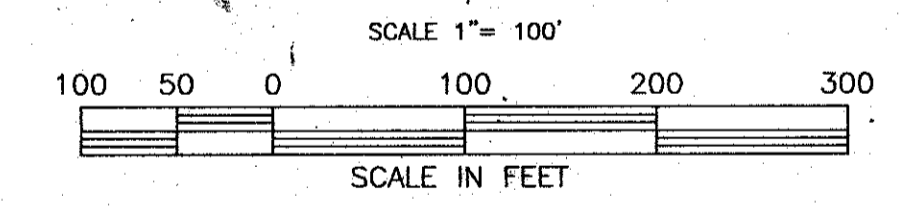
KAREN E. RUSHING
CLERK OF THE CIRCUIT COURT
SARASOTA COUNTY, FLORIDA
[Signature]
DEPUTY CLERK

LEGEND OF ABBREVIATIONS

- | | |
|---|--|
| AVE. = AVENUE | N.G.V.D. = NATIONAL GEODETIC |
| B. = BASELINE | NO. = NUMBER |
| BLK. = BLOCK | N.O.S. = NATIONAL OCEAN SERVICE |
| BLVD. = BOULEVARD | NW = NORTHWEST |
| B.M. = BENCH MARK | O.A. = OVER ALL |
| B.T.O.B. = BACK TOP OF BANK | O/E = OVERHEAD ELECTRIC |
| C.B. = CONDOMINIUM BOOK | O.R.B. = OFFICIAL RECORDS BOOK |
| C.C.C.L. = COASTAL CONSTRUCTION | O.T. = ORDER OF TAKING |
| CH. = CHORD | P.B. = PLAT BOOK |
| CH.P. = CHAPTER | P.C. = POINT OF CURVATURE |
| CH. BRC. = CHORD BEARING | P.C.P. = PERMANENT CONTROL POINT |
| CL. = CENTERLINE | PG. = PAGE |
| C.M. = CONCRETE MONUMENT | P.I. = POINT OF INTERSECTION |
| C.M.P. = CORRUGATED METAL PIPE | P. = PROPERTY LINE |
| CO. = COUNTY | P.L.S. = PROFESSIONAL LAND SURVEYOR |
| CONDO. = CONDOMINIUM | P.R.C. = POINT OF REVERSE CURVE |
| CONST. = CONSTRUCTION | P.R.M. = PERMANENT REFERENCE MONUMENT |
| COR. = CORNER | P.T. = POINT OF TANGENCY |
| D.B. = DEED BOOK | R. = RADIUS |
| D.D. = DATA DRAWER | R.C.P. = REINFORCED CONCRETE PIPE |
| D.N.R. = DEPARTMENT OF NATURAL RESOURCES | RD. = ROAD |
| D.O.T. = DEPARTMENT OF TRANSPORTATION | REF. = REFERENCE |
| DR. = DRIVE | RESUB. = RESUBDIVISION |
| DRAIN. = DRAINAGE | RNG. = RANGE |
| E. = EAST | R.P.B. = ROAD PLAT BOOK |
| EASE. = EASEMENT | R.R. = RAILROAD |
| EP. = EDGE OF PAVEMENT | RT. = RIGHT |
| F.A.C. = FLORIDA ADMINISTRATIVE CODE | R/W. = RIGHT-OF-WAY |
| F.B. = FIELD BOOK | S. = SOUTH |
| F.D.O.T. = FLORIDA DEPARTMENT OF TRANSPORTATION | SE = SOUTHEAST |
| FL. = FLORIDA | SEC. = SECTION |
| FND. = FOUND | S.F.D.D. = SARASOTA-FRUITVILLE DRAINAGE DISTRICT |
| F.N. = FILE NUMBER | S.R. = STATE ROAD |
| F.P. & L. = FLORIDA POWER AND LIGHT | ST. = STREET |
| G.T.E. = GENERAL TELEPHONE ELECTRIC | STA. = STATION |
| I.P. = IRON PIPE | SUB. = SUBDIVISION |
| I.R. = IRON ROD | SW = SOUTHWEST |
| L. = LENGTH | T. = TANGENT |
| LT. = LEFT | T.L.I.F. = TRUSTEES OF THE INTERNAL IMPROVEMENT FUND |
| M.H.W.L. = MEAN HIGH WATER LINE | T.B. = TOP OF BANK |
| MON. = MONUMENT | TWP. = TOWNSHIP |
| M/B/W. = MAINTAINED RIGHT-OF-WAY | U/E. = UNDERGROUND ELECTRIC |
| N. = NORTH | U.S. = UNITED STATES |
| N. & D. = NAIL AND DISC | VEG. = VEGETATION |
| NE = NORTH EAST | W. = WEST |

LEGEND

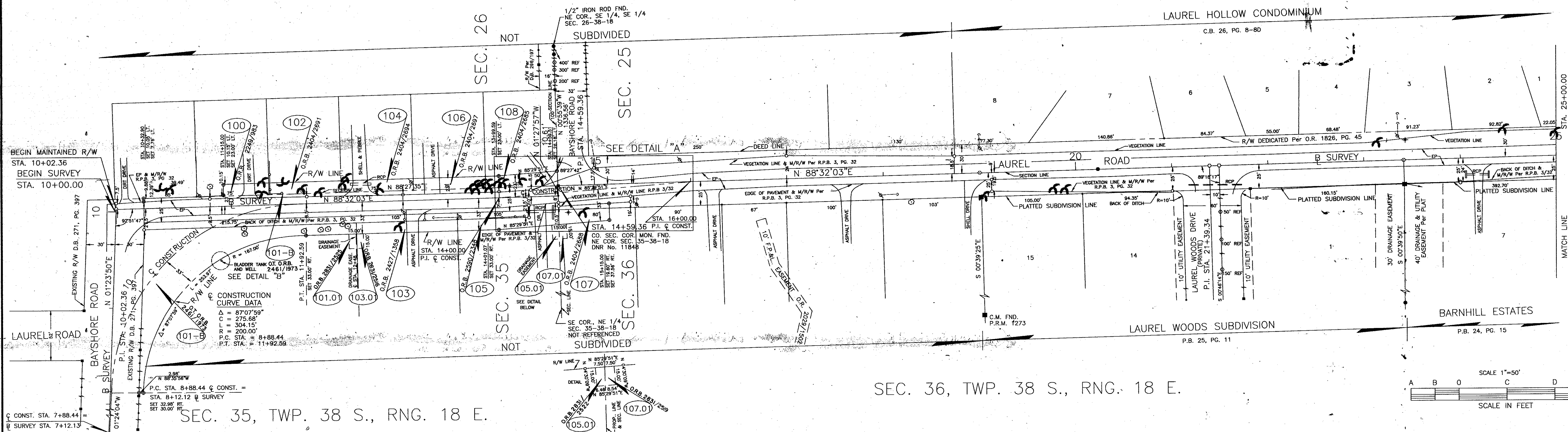
- = NAIL & DISK SET
- = NAIL & DISK FND.
- = REF NAIL & DISC
- = I.R. SET WITH RED CAP STAMPED
- = I.R. FND.
- = RAILROAD SPIKE FND.
- △ = HUB SET
- △ = HUB FND.
- = CONCRETE MONUMENT SET
- = CONCRETE MONUMENT FND.
- = WATER VALVE
- = UTILITY POLE
- = G.T. & T.V. CABLE BOX
- = MANHOLE
- = LIGHT POLE
- = FIRE HYDRANT
- = GUY WIRE
- = TOP OF BANK
- = EDGE OF PAVEMENT
- = OAK TREE
- = PALM TREE
- = R/W MARKER INSTALLED (SEE SURVEYOR'S NOTES)



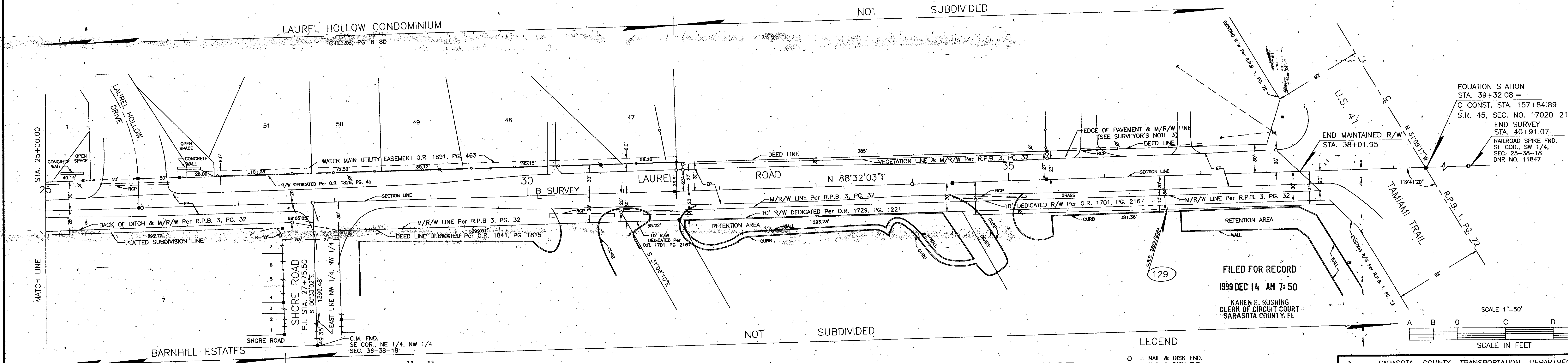
FILED FOR RECORD
1999 DEC 14 AM 7:50
KAREN E. RUSHING
CLERK OF CIRCUIT COURT
SARASOTA COUNTY, FL

KEY MAP
LAUREL ROAD

SARASOTA COUNTY TRANSPORTATION DEPARTMENT ENGINEERING DIVISION - SURVEY - MAPPING SECTION			
RIGHT-OF-WAY MAP			
LAUREL ROAD BAYSHORE ROAD TO U.S. 41			
DRAWN BY	T. OWEN	DATE	11-13-89
CHECKED BY	W.W.	DATE	11-18-92
COMPARED BY	P.F.L.	DATE	11-13-89
REF. D.D. F.N.	F.B. 309, P.C. 39	BISHOP F.B. A-1, B-2	
SCALE	1" = 100'	PROJECT NO.	8712
		SHEET	1 OF 2

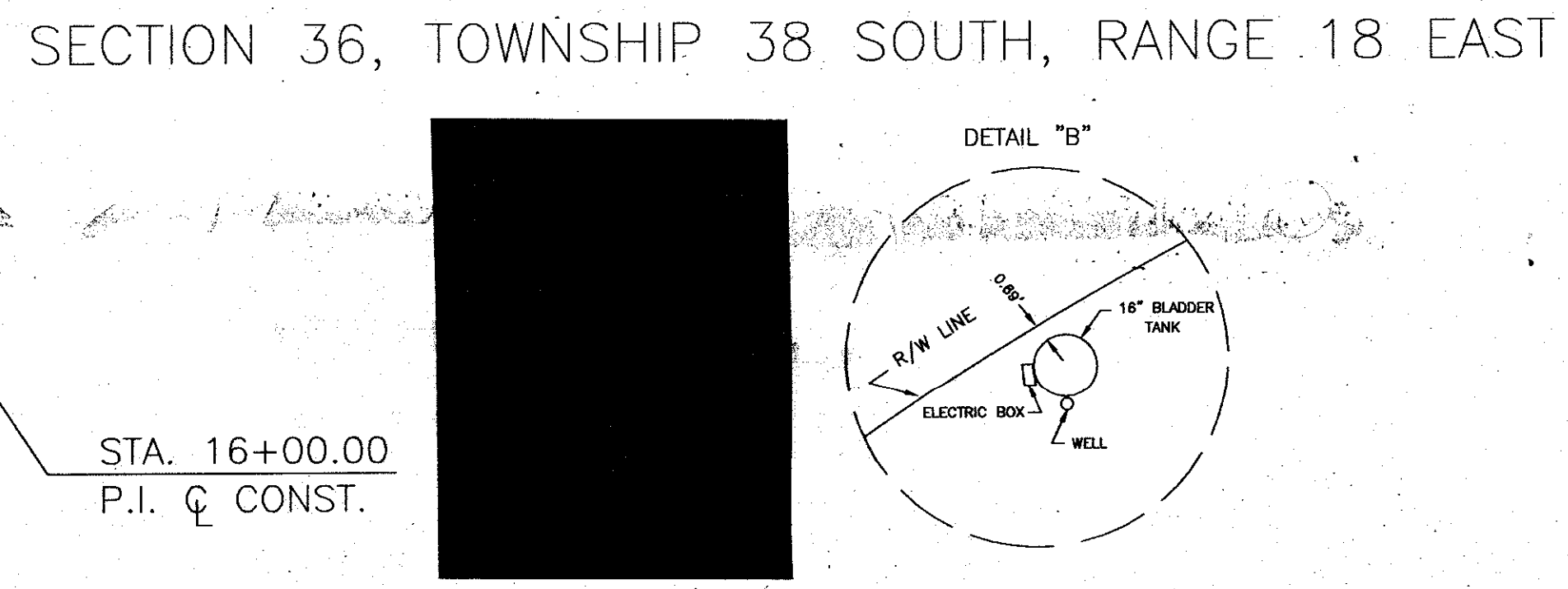
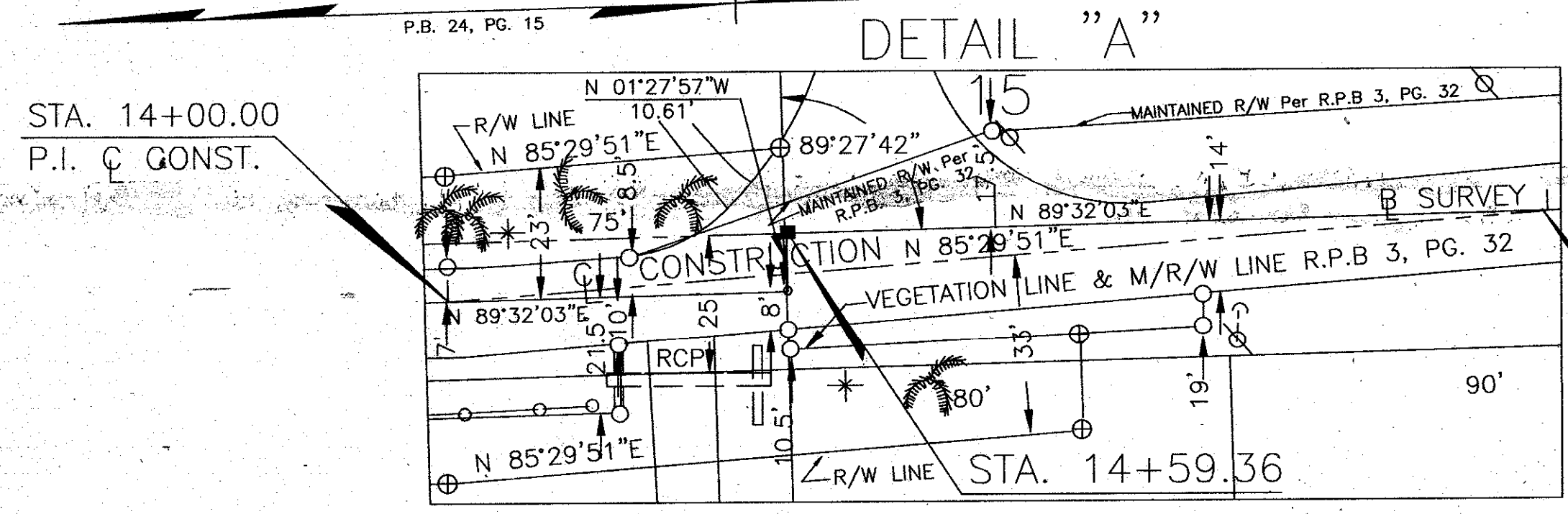


SECTION 25, TOWNSHIP 38 SOUTH, RANGE 18 EAST



FILED FOR RECORD
1999 DEC 14 AM 7:50
KAREN E. RUSHING
CLERK OF CIRCUIT COURT
SARASOTA COUNTY, FL

- LEGEND
- = NAIL & DISK FND.
 - = NAIL & DISK FND.
 - ⊙ = REF NAIL & DISC
 - ⊖ = I.R. SET WITH RED CAP STAMPED COUNTY R/W PLS 1867
 - = I.R. FND.
 - ⊙ = RAILROAD SPIKE FND.
 - △ = HUB SET
 - ▲ = HUB FND.
 - = CONCRETE MONUMENT SET
 - = CONCRETE MONUMENT FND.
 - = WATER VALVE
 - = UTILITY POLE
 - = C.T. & T.V. CABLE BOX
 - = MANHOLE
 - = LIGHT POLE
 - = FIRE HYDRANT
 - = GUY WIRE
 - = TOP OF BANK
 - EP = EDGE OF PAVEMENT
 - = OAK TREE
 - = PINE TREE
 - = PALM TREE
 - ⊙ = R/W MARKER INSTALLED (SEE SURVEYOR'S NOTES)



SARASOTA COUNTY TRANSPORTATION DEPARTMENT
ENGINEERING DIVISION, SURVEY - MAPPING SECTION

RIGHT OF WAY MAP

LAUREL ROAD
BAYSHORE ROAD TO U.S. 41

BY	DATE
T. OWEN	11-13-89
W.W.	11-18-92
P.F.L.	11-18-92

REF. D.D. 1, F.N. 3
F.B. 308, PG. 39 F.B. 330, PG. 7
BISHOP F.B. A-1, B-2

SCALE 1"=50'

PROJECT NO. 8712

SHEET 2 of 2