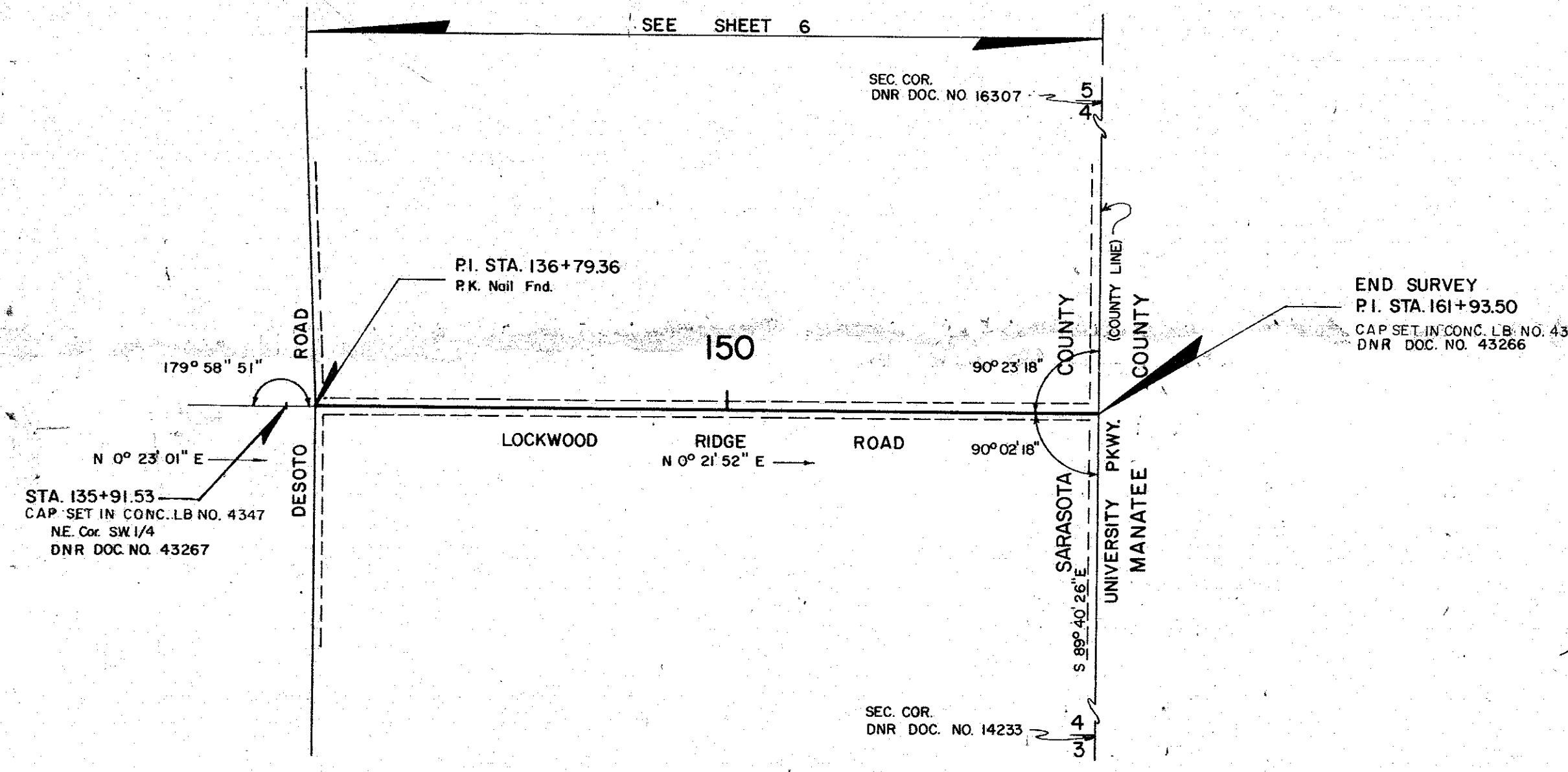


TWP. 36 S. RGE 18 E.  
SCALE 1" = 400'



- LEGEND OF ABBREVIATIONS**
- AVE. = AVENUE
  - B. = BASELINE
  - BLK. = BLOCK
  - BLVD. = BOULEVARD
  - B.M. = BENCH MARK
  - B.T.O.B. = BACK TOP OF BANK
  - C.B. = CONDOMINIUM BOOK
  - C.C.C.L. = COASTAL CONSTRUCTION CONTROL LINE
  - CH. = CHORD
  - CHP. = CHAPTER
  - CH. BRG. = CHORD BEARING
  - C. = CENTERLINE
  - C.M. = CONCRETE MONUMENT
  - C.M.P. = CORRUGATED METAL PIPE
  - CO. = COUNTY
  - CONDO. = CONDOMINIUM
  - CONST. = CONSTRUCTION
  - COR. = CORNER
  - D.B. = DEED BOOK
  - D.N.R. = DEPARTMENT OF NATURAL RESOURCES
  - D.O.T. = DEPARTMENT OF TRANSPORTATION
  - DR. = DRIVE
  - DRAIN. = DRAINAGE
  - E. = EAST
  - EASE. = EASEMENT
  - EP. = EDGE OF PAVEMENT
  - F.A.C. = FLORIDA ADMINISTRATIVE CODE
  - F.B. = FIELD BOOK
  - F.D.O.T. = FLORIDA DEPARTMENT OF TRANSPORTATION
  - FL. = FLORIDA
  - FND. = FOUND
  - F.P. & L. = FLORIDA POWER AND LIGHT
  - G.T.E. = GENERAL TELEPHONE ELECTRIC
  - I.P. = IRON PIPE
  - I.R. = IRON ROD
  - L. = LENGTH
  - LT. = LEFT
  - M.H.W.L. = MEAN HIGH WATER LINE
  - MON. = MONUMENT
  - M/R/W. = MAINTAINED RIGHT-OF-WAY
  - N. = NORTH
  - N. & D. = NAIL AND DISC
  - NE. = NORTH EAST
  - N.G.V.D. = NATIONAL GEODETIC VERTICAL DATUM
  - NO. = NUMBER
  - N.O.S. = NATIONAL OCEAN SERVICE
  - NW. = NORTHWEST
  - O.A. = OVER ALL
  - O/E. = OVERHEAD ELECTRIC
  - O.R.B. = OFFICIAL RECORDS BOOK
  - P.B. = PLAT BOOK
  - O.T. = ORDER OF TAKING
  - P.B. = PLAT BOOK
  - P.C. = POINT OF CURVATURE
  - P.C.P. = PERMANENT CONTROL POINT
  - P.I. = POINT OF INTERSECTION
  - P. = POINT OF CURVATURE SURVEYOR
  - P. = PROPERTY LINE
  - P.L.S. = PROFESSIONAL LAND SURVEYOR
  - P.R.C. = POINT OF REVERSE CURVE
  - P.R.M. = PERMANENT REFERENCE MONUMENT
  - P.T. = POINT OF TANGENCY
  - R. = RADIUS
  - R.C.P. = REINFORCED CONCRETE PIPE
  - R.D. = ROAD
  - REF. = REFERENCE
  - RESUB. = RESUBDIVISION
  - RNG. = RANGE
  - R.P.B. = ROAD PLAT BOOK
  - R.R. = RAILROAD
  - RT. = RIGHT
  - R/W. = RIGHT-OF-WAY
  - S. = SOUTH
  - SE. = SOUTHEAST
  - SEC. = SECTION
  - S.F.D.D. = SARASOTA-FRUITVILLE DRAINAGE DISTRICT
  - SR. = STATE ROAD
  - ST. = STREET
  - STA. = STATION
  - SUB. = SUBDIVISION
  - SW. = SOUTHWEST
  - T. = TANGENT
  - T.I.I.F. = TRUSTEES OF THE INTERNAL IMPROVEMENT FUND
  - T.B. = TOP OF BANK
  - TWP. = TOWNSHIP
  - U/E. = UNDERGROUND ELECTRIC
  - U.S. = UNITED STATES
  - VEG. = VEGETATION
  - W. = WEST
  - WB. = LICENSED BUSINESS
  - CONC. = CONCRETE

**LEGEND**

- = BLUE DISK & NAIL SET L.B. NO. 4347
- = NAIL & DISK FND.
- = REF NAIL & DISC
- = I.R. SET
- = I.R. FND.
- △ = RAILROAD SPIKE FND.
- △ = HUB SET
- △ = HUB FND.
- = CONCRETE MONUMENT SET
- = CONCRETE MONUMENT FND.
- = WATER VALVE
- = UTILITY POLE
- = G.T. & T.V. CABLE BOX
- = MANHOLE
- = LIGHT POLE
- = FIRE HYDRANT
- = GUY WIRE
- = TOP OF BANK
- = EDGE OF PAVEMENT
- = OAK TREE
- = PALM TREE
- = IRON PIPE
- = ALUMINUM CAP ON 5/8" REBAR STAMPED WITH "SARASOTA COUNTY R/W MARKER" ALONG WITH L.B. NO. 4347.

**BEARINGS**

BEARINGS ARE BASED ON THE UNIVERSITY PKWY. SRD. R/W MAP, SR. NO. 610, SECTION 17190-2502 FILED IN ROAD PLAT BOOK 2 AT PAGES 41-41F

**UTILITIES OWNERS**

TELEPHONE LINES, CABLES AND POLES OWNED BY GENERAL TELEPHONE COMPANY.  
POWER POLES AND LINES OWNED BY FLORIDA POWER AND LIGHT COMPANY.

**SURVEYOR'S MONUMENTATION CERTIFICATE**

I HEREBY CERTIFY THAT THE RIGHT-OF-WAY, LAND CORNER AND INTERSECTING ROAD CENTERLINE MONUMENTS OR MARKERS AS SHOWN ON THIS MAP, WERE RECENTLY INSTALLED UNDER MY DIRECTION, THAT THEY ARE IN THE TRUE AND CORRECT LOCATION TO THE BEST OF MY KNOWLEDGE AND BELIEF AND THAT THEY MEET THE MINIMUM TECHNICAL STANDARDS FOR LAND SURVEYING IN THE STATE OF FLORIDA (CH. 21 HH-6, F.A.C.).

DATE OF SURVEY: 4-16-90

*Hans Haggblom*  
HANS HAGGBLOM  
PROFESSIONAL LAND SURVEYOR NO. 3709  
COLEMAN KNOTT AND ASSOCIATES, INC. (L.B. NO. 4347)  
5550 BEE RIDGE ROAD, SUITE 1-E  
SARASOTA, FL 34233

**SURVEYOR'S CERTIFICATE**

I HEREBY CERTIFY THAT THIS R/W MAP (SHEETS 1-8) REPRESENTS A SPECIFIC PURPOSE SURVEY OF THE ROAD AS SHOWN, THAT THE SURVEY WAS RECENTLY PERFORMED UNDER MY DIRECTION AND THAT IT IS TRUE AND CORRECT TO THE BEST OF MY KNOWLEDGE AND BELIEF, AND THAT IT MEETS THE MINIMUM TECHNICAL STANDARDS FOR LAND SURVEYING IN THE STATE OF FLORIDA (CH. 21 HH-6, F.A.C.).

DATE OF SURVEY: 9-22-87

*E.R. Emerson*  
E.R. EMERSON, COUNTY SURVEYOR  
PROFESSIONAL LAND SURVEYOR NO. 1867  
STATE OF FLORIDA  
1301 CATTLEMEN ROAD  
SARASOTA, FLORIDA 34232-9631

FILED FOR RECORD  
93 MAR 29 PM 4:57  
KAREN E. RUSHING  
CLERK OF CIRCUIT COURT  
SARASOTA COUNTY, FL

SARASOTA COUNTY TRANSPORTATION DEPARTMENT  
ENGINEERING DIVISION, CADASTRAL SECTION

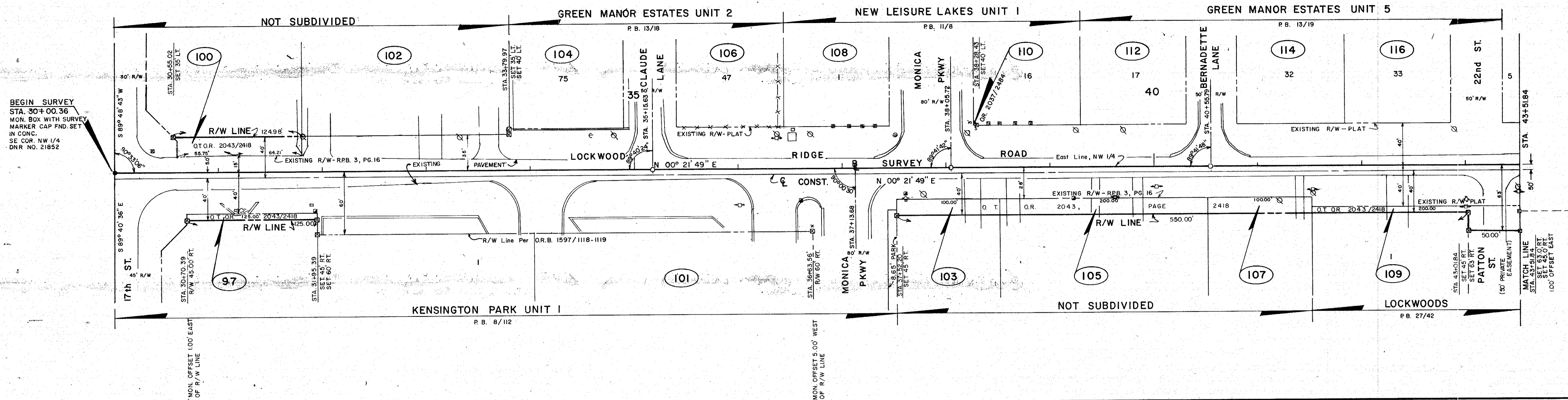
## RIGHT OF WAY MAP

LOCKWOOD RIDGE ROAD  
17 TH. STREET TO UNIVERSITY PARKWAY

DRAWN	BY	DATE	
CHECKED	GE	3-11-88	
COMPARED	DTI	3-28-88	
REF. 295, PSS 1-47, 53-54, 55-64, 65			
SCALE	PROJECT NO.	8513	SHEET 1 OF 8

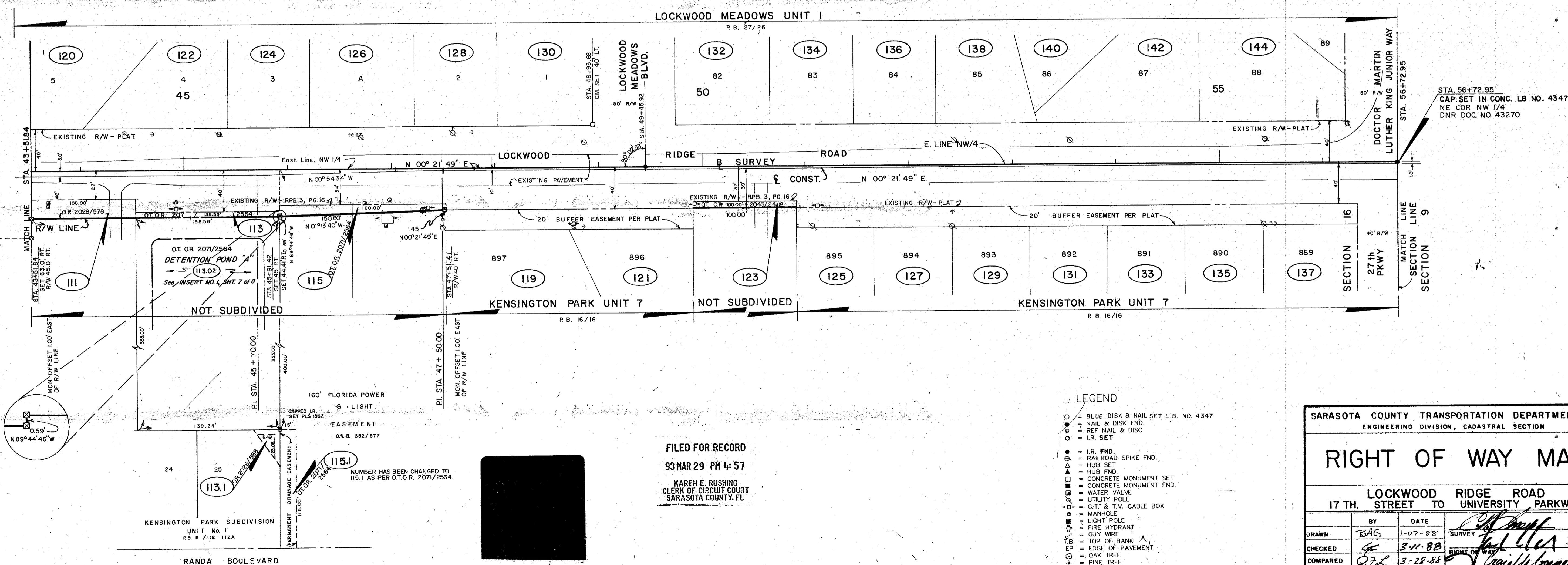
SCALE 1" = 50'

SEC. 16, TWP 36 S, RGE. 18 E.



SCALE 1" = 50'

SEC. 16, TWP 36 S, RGE. 18 E.



FILED FOR RECORD  
93 MAR 29 PM 4:57

KAREN E. RUSHING  
CLERK OF CIRCUIT COURT  
SARASOTA COUNTY, FL

LEGEND

- = BLUE DISK & NAIL SET L.B. NO. 4347
- = NAIL & DISK FND.
- ⊙ = REF NAIL & DISC
- = I.R. SET
- = I.R. FND.
- ⊙ = RAILROAD SPIKE FND.
- △ = HUB SET
- ▲ = HUB FND
- = CONCRETE MONUMENT SET
- = CONCRETE MONUMENT FND.
- ⊕ = WATER VALVE
- ⊖ = UTILITY POLE
- ⊗ = G.T. & T.V. CABLE BOX
- ⊙ = MANHOLE
- ⊙ = LIGHT POLE
- ⊙ = FIRE HYDRANT
- ⊙ = GUY WIRE
- ⊙ = TOP OF BANK
- ⊙ = EDGE OF PAVEMENT
- ⊙ = OAK TREE
- ⊙ = PINE TREE
- ⊙ = PALM TREE
- ⊙ = ALUMINUM CAP ON 5/8" REBAR STAMPED WITH "SARASOTA COUNTY R/W MARKER" ALONG WITH L.B. NO. 4347

SARASOTA COUNTY TRANSPORTATION DEPARTMENT  
ENGINEERING DIVISION, CADASTRAL SECTION

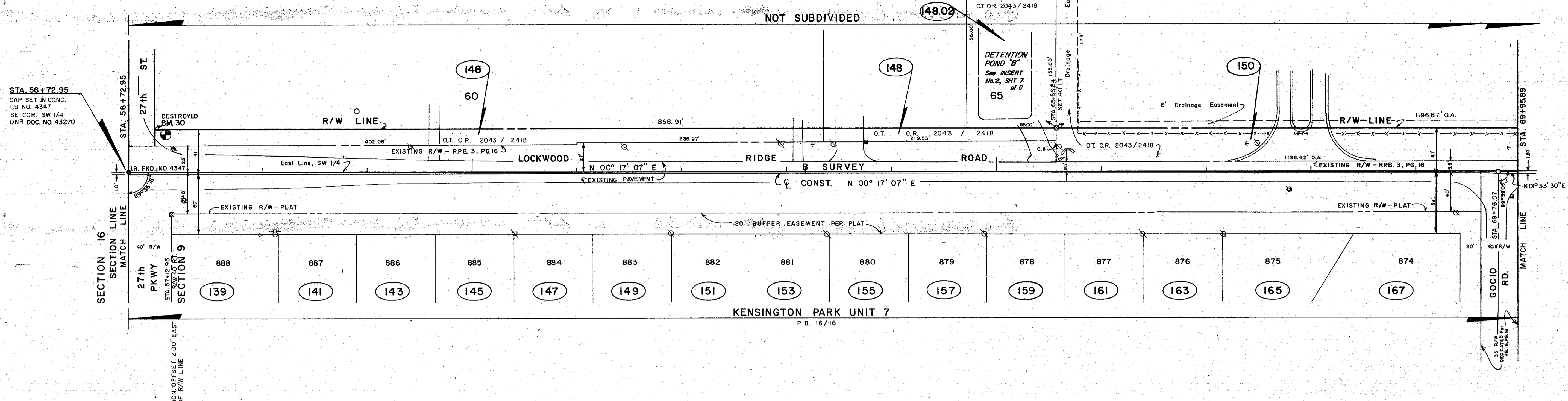
## RIGHT OF WAY MAP

**LOCKWOOD RIDGE ROAD**  
17 TH. STREET TO UNIVERSITY PARKWAY

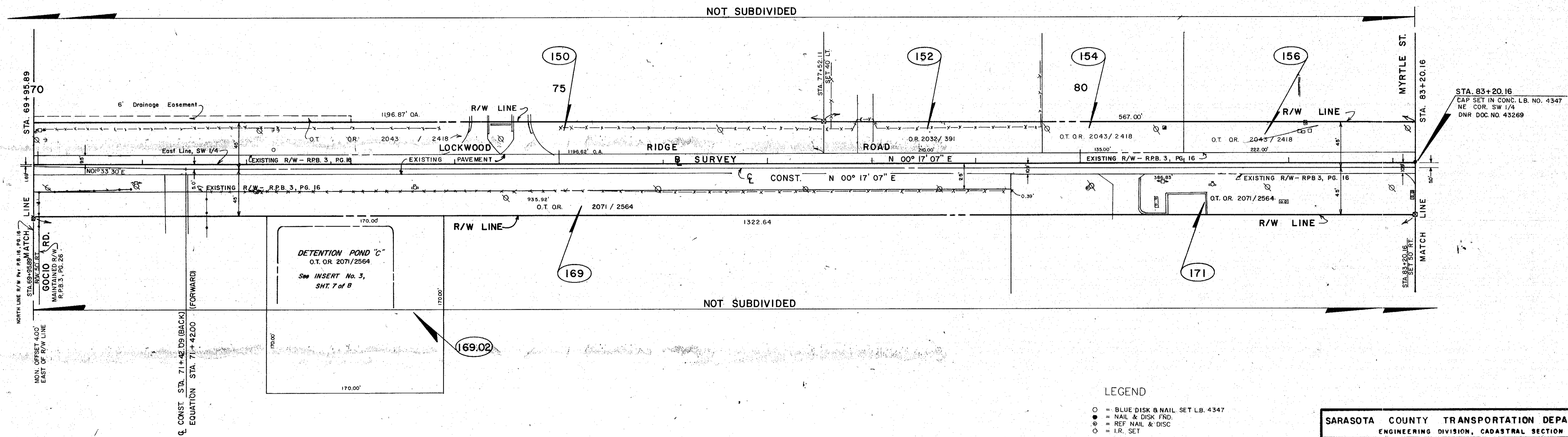
DATE	BY	DATE	DATE
1-11-88	AS	1-07-88	SURVEY
3-11-88	AS	3-11-88	CHECKED
3-28-88	QFL	3-28-88	COMPARED

REF. FB 295, PGS. 147, 53, 54, 55, 64, 65  
SCALE 1" = 50' PROJECT NO. (85050) 8513 SHEET 2 OF 8

SCALE 1" = 50'  
SEC. 9, TWP. 36 S., RGE. 18 E.



SCALE 1" = 50'  
SEC. 9, TWP. 36 S., RGE. 18 E.



LEGEND

- = BLUE DISK & NAIL SET LB. 4347
- = NAIL & DISK FND.
- = REF. NAIL & DISC
- = I.R. SET
- = I.R. FND.
- = RAILROAD SPIKE FND.
- △ = HUB SET
- ▲ = HUB FND.
- = CONCRETE MONUMENT SET
- = CONCRETE MONUMENT FND.
- = WATER VALVE
- = UTILITY POLE
- = C.T. & T.V. CABLE BOX
- = MANHOLE
- = LIGHT POLE
- = FIRE HYDRANT
- = GUY WIRE
- = TOP OF BANK
- EP = EDGE OF PAVEMENT
- = OAK TREE
- = PINE TREE
- = PALM TREE
- = ALUMINUM CAP ON 5/8" REBAR STAMPED WITH SARASOTA COUNTY R/W MARKER, ALONG WITH C.B. NO. 4347

FILED FOR RECORD  
93 MAR 29 PM 4:57  
KAREH E. RUSHING  
CLERK OF CIRCUIT COURT  
SARASOTA COUNTY, FL

SARASOTA COUNTY TRANSPORTATION DEPARTMENT  
ENGINEERING DIVISION, CADASTRAL SECTION

## RIGHT OF WAY MAP

17 TH. STREET TO UNIVERSITY PARKWAY

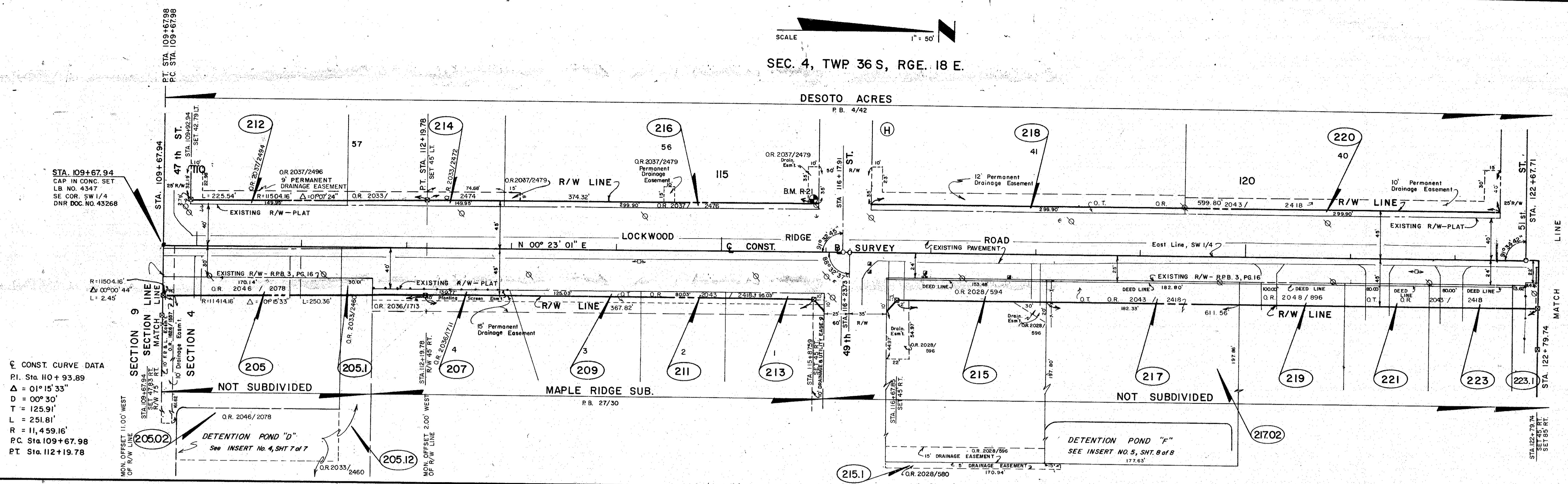
BY	DATE	DATE	DATE
DRAWN	EAG	1-07-88	
CHECKED	CF	3-11-88	
COMPARED	CFZ	3-28-88	

REF. FB 295, PGS. 1-47, 53-54, 55-64, 65  
SCALE 1" = 50' PROJECT NO. (85050) 8513 SHEET 3 OF 8



SCALE 1" = 50'

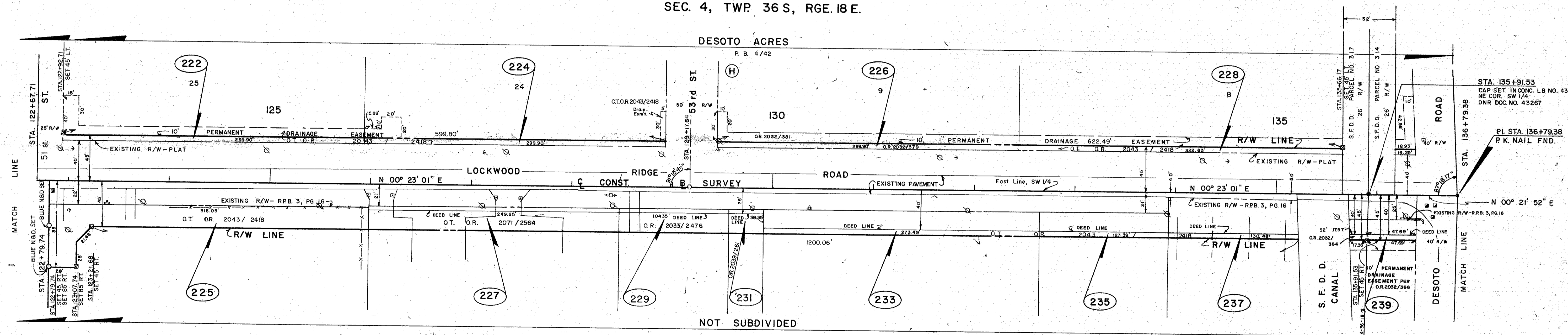
SEC. 4, TWP 36 S, RGE. 18 E.



CONST. CURVE DATA  
 P.I. Sta 110+93.89  
 $\Delta = 01^\circ 15' 33''$   
 $D = 00^\circ 30'$   
 $T = 125.91'$   
 $L = 251.81'$   
 $R = 11,459.16'$   
 P.C. Sta 109+67.98  
 P.T. Sta 112+19.78

SCALE 1" = 50'

SEC. 4, TWP 36 S, RGE. 18 E.



FILED FOR RECORD  
 93 MAR 29 PM 4:57  
 KAREN E. RUSHING  
 CLERK OF CIRCUIT COURT  
 SARASOTA COUNTY, FL

- LEGEND
- = BLUE DISK & NAIL SET L.B. NO. 4347
  - = NAIL & DISK FND.
  - = REF NAIL & DISC
  - = I.R. SET
  - = I.R. FND.
  - ⊙ = RAILROAD SPIKE FND.
  - △ = HUB SET
  - ▲ = HUB FND.
  - = CONCRETE MONUMENT SET
  - = CONCRETE MONUMENT FND.
  - ⊕ = WATER VALVE
  - ⊙ = UTILITY POLE
  - ⊖ = C.T. & T.V. CABLE BOX
  - ⊙ = MANHOLE
  - ⊙ = LIGHT POLE
  - ⊙ = FIRE HYDRANT
  - ⊙ = GUY WIRE
  - ⊙ = TOP OF BANK
  - ⊙ = EDGE OF PAVEMENT
  - ⊙ = OAK TREE
  - ⊙ = PINE TREE
  - ⊙ = PALM TREE
  - ⊙ = ALUMINUM CAP ON 5/8" REBAR STAMPED WITH "SARASOTA COUNTY R/W MARKER" ALONG WITH L.B. NO. 4347

SARASOTA COUNTY TRANSPORTATION DEPARTMENT  
 ENGINEERING DIVISION, CADASTRAL SECTION

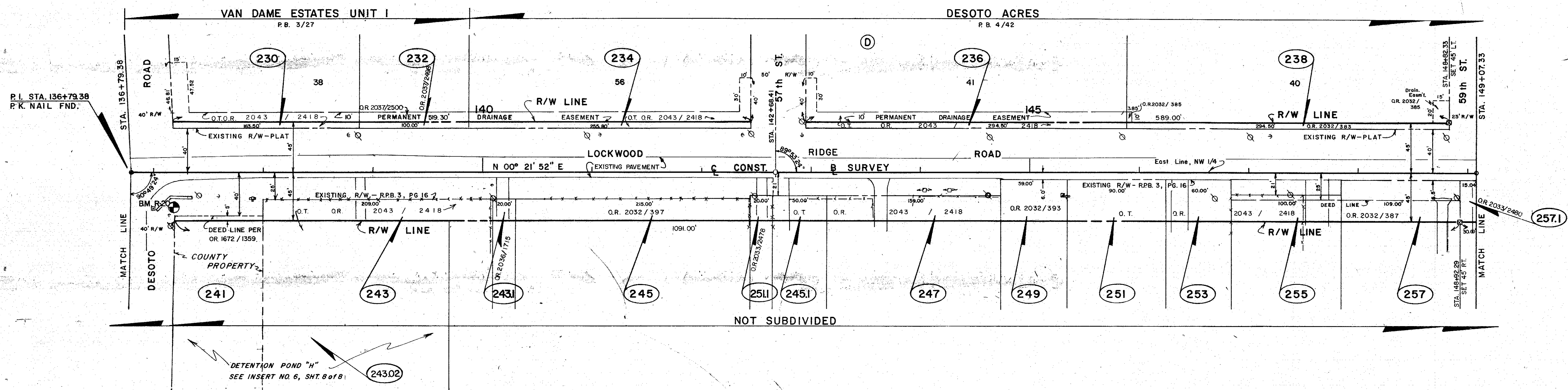
## RIGHT OF WAY MAP

LOCKWOOD RIDGE ROAD  
 17 TH. STREET TO UNIVERSITY PARKWAY

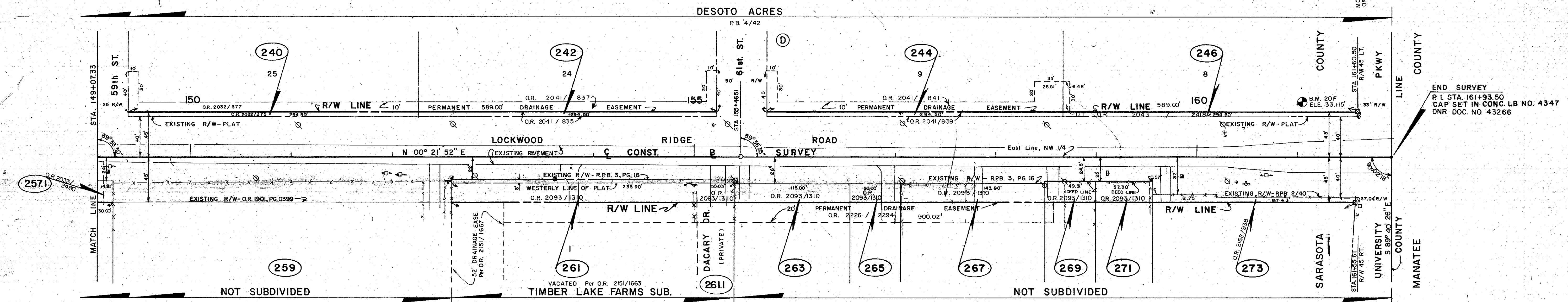
BY	DATE	DATE
BA6	1-07-88	1-11-88
GE	3-11-88	3-14-88
GE	3-28-88	4-14-88

REF. E.B. 295, PGS. 1-47, 53-54, 55-64, 65  
 PROJECT NO. 8513  
 SCALE 1" = 50'  
 SHEET 5 OF 8

SCALE 1" = 50'  
SEC. 4, TWP 36 S, RGE. 18 E.



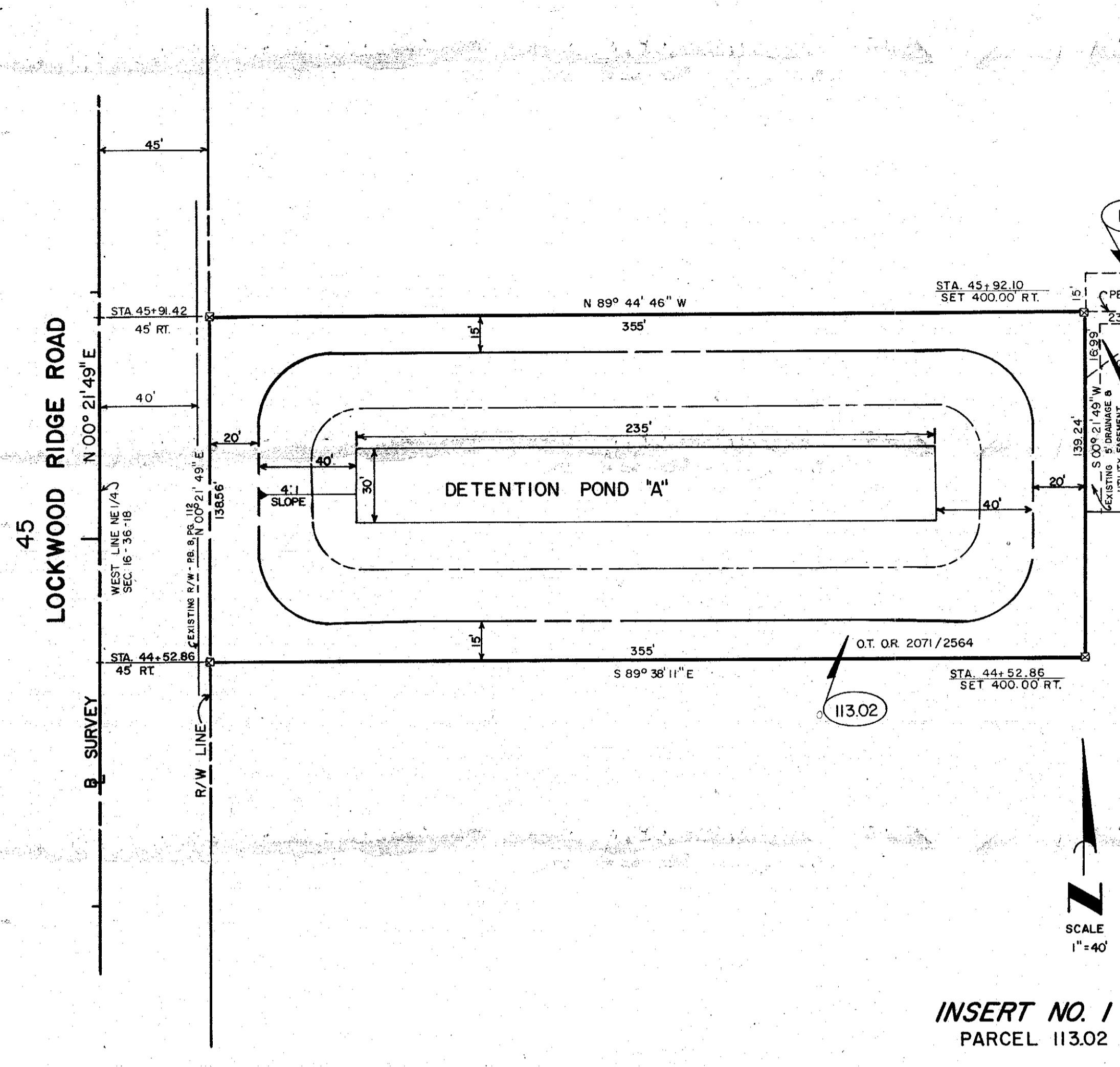
SCALE 1" = 50'  
SEC. 4, TWP 36 S, RGE. 18 E.



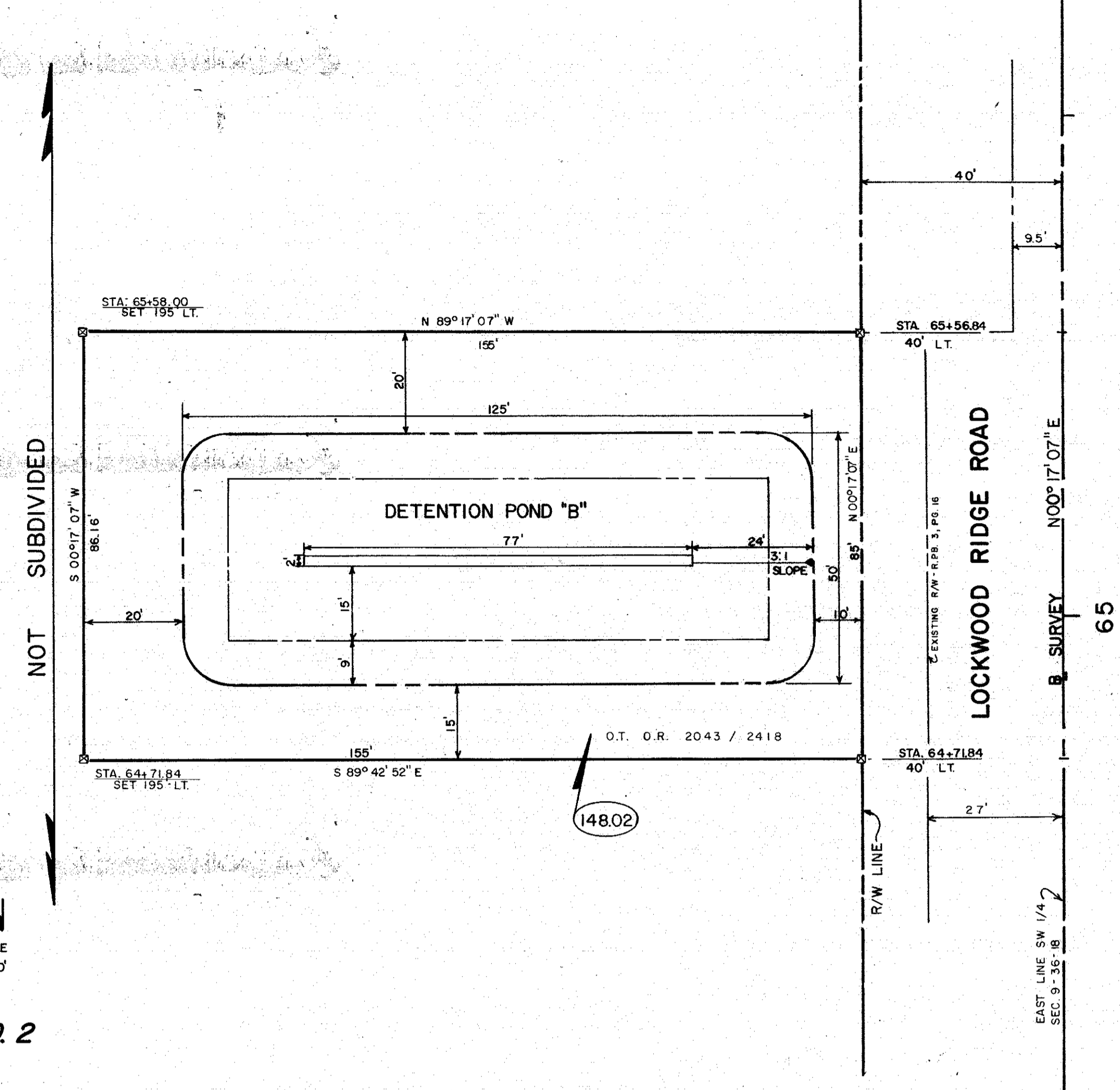
- LEGEND**
- = BLUE DISK & NAIL SET L.B. NO. 4347
  - = NAIL & DISK FND.
  - ⊙ = REF NAIL & DISC
  - = I.R. SET
  - = I.R. FND.
  - ⊙ = RAILROAD SPIKE FND.
  - △ = HUB SET
  - ▲ = HUB FND.
  - = CONCRETE MONUMENT SET
  - = CONCRETE MONUMENT FND.
  - ⊕ = WATER VALVE
  - ⊕ = UTILITY POLE
  - ⊕ = C.T. & T.V. CABLE BOX
  - ⊕ = MANHOLE
  - ⊕ = LIGHT POLE
  - ⊕ = FIRE HYDRANT
  - ⊕ = GUY WIRE
  - ⊕ = TOP OF BANK
  - ⊕ = EDGE OF PAVEMENT
  - ⊕ = OAK TREE
  - ⊕ = PINE TREE
  - ⊕ = PALM TREE
  - ⊕ = ALUMINUM CAP ON 5/8" REBAR STAMPED WITH "SARASOTA COUNTY R/W MASTERS" ALONG WITH L.B. NO. 4347.

FILED FOR RECORD  
93 MAR 29 PM 4:57  
KAREN E. RUSHING  
CLERK OF CIRCUIT COURT  
SARASOTA COUNTY, FL

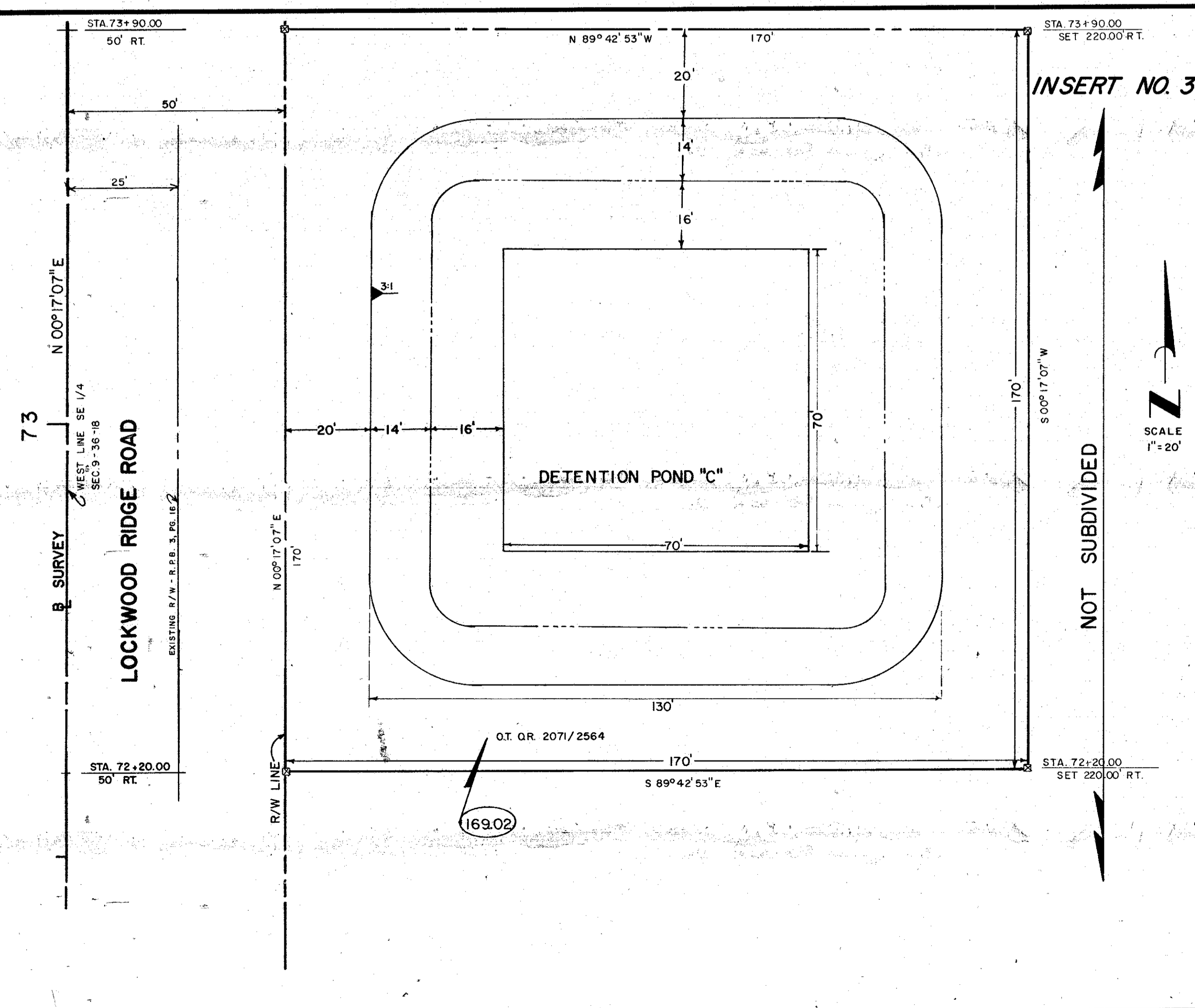
SARASOTA COUNTY TRANSPORTATION DEPARTMENT ENGINEERING DIVISION, CADASTRAL SECTION			
<b>RIGHT OF WAY MAP</b>			
LOCKWOOD RIDGE ROAD 17 TH. STREET TO UNIVERSITY PARKWAY			
BY	DATE	DRAWN	
BAG	1-07-88	SURVEY	
CHECKED	3-11-88	DATE	
COMPARED	3-18-88	DATE	
REF. PGS. 235, PGS. 1-47, 53-54, 56-64, 65	TRANSPORTATION DIRECTOR	DATE	
SCALE 1" = 50'	PROJECT NO. (25050)	8513	SHEET 6 OF 8



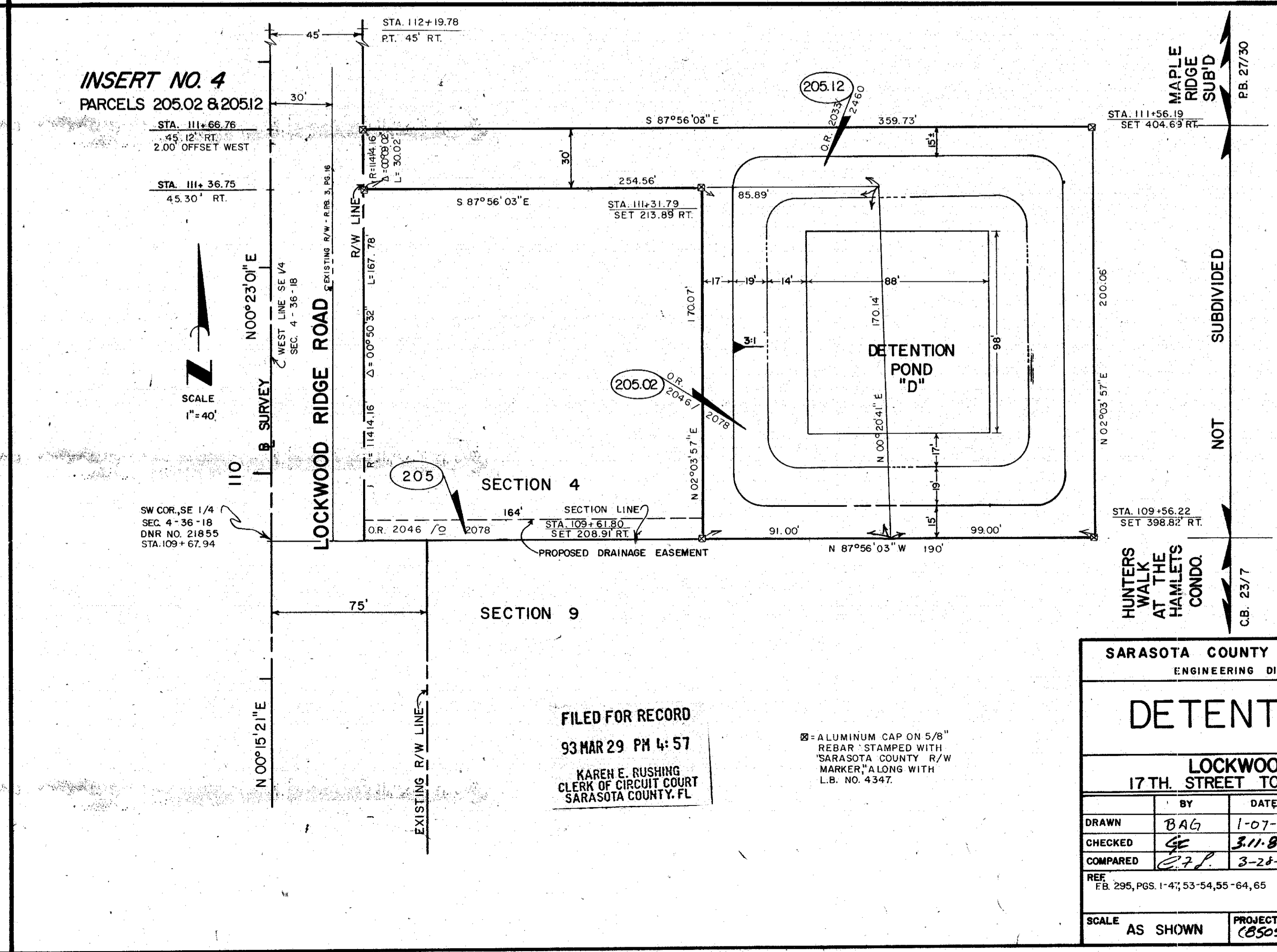
INSERT NO. 1  
PARCEL 113.02



INSERT NO. 2



INSERT NO. 3

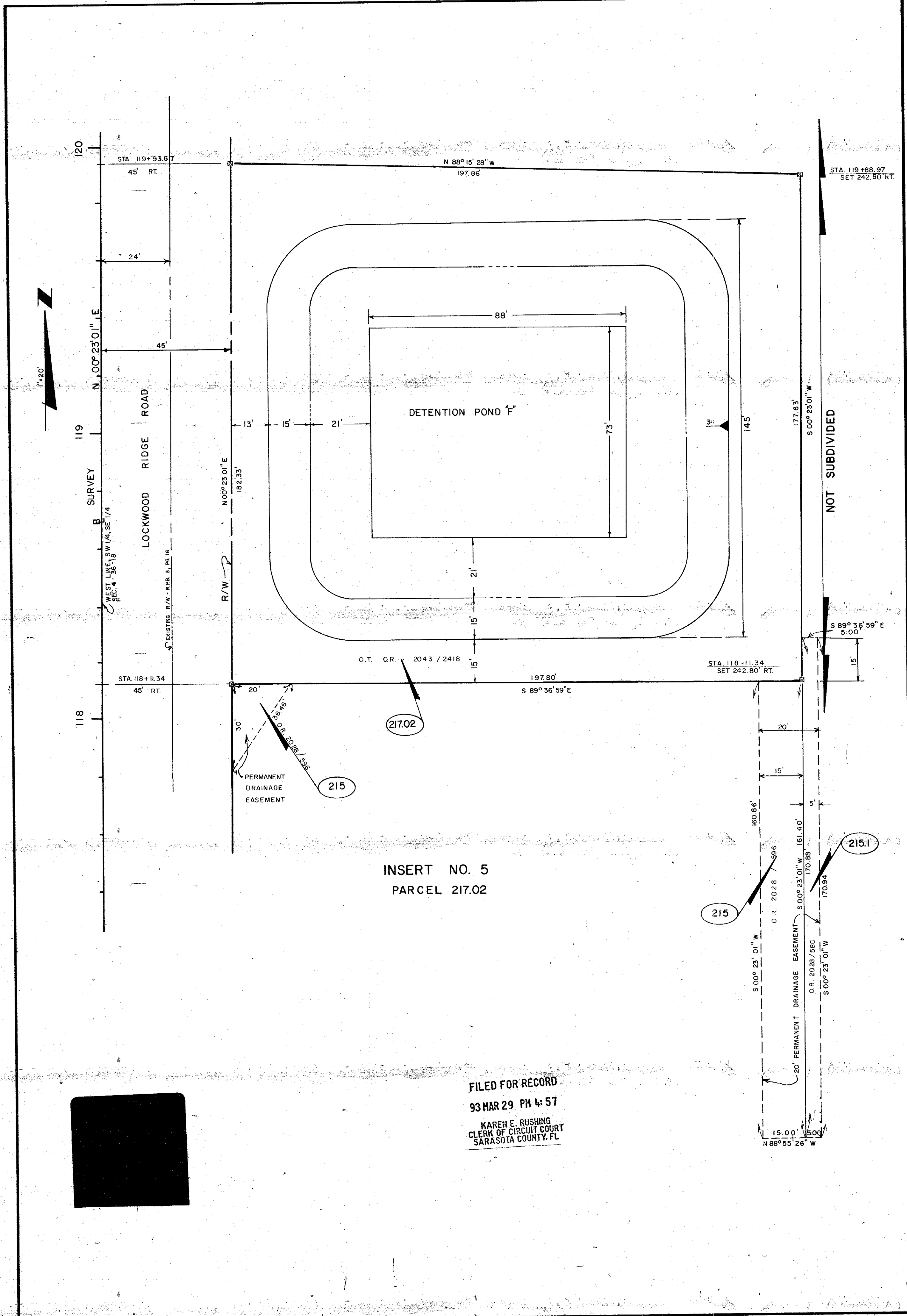


INSERT NO. 4  
PARCELS 205.02 & 205.12

FILED FOR RECORD  
93 MAR 29 PM 4:57  
KAREH E. RUSHING  
CLERK OF CIRCUIT COURT  
SARASOTA COUNTY, FL

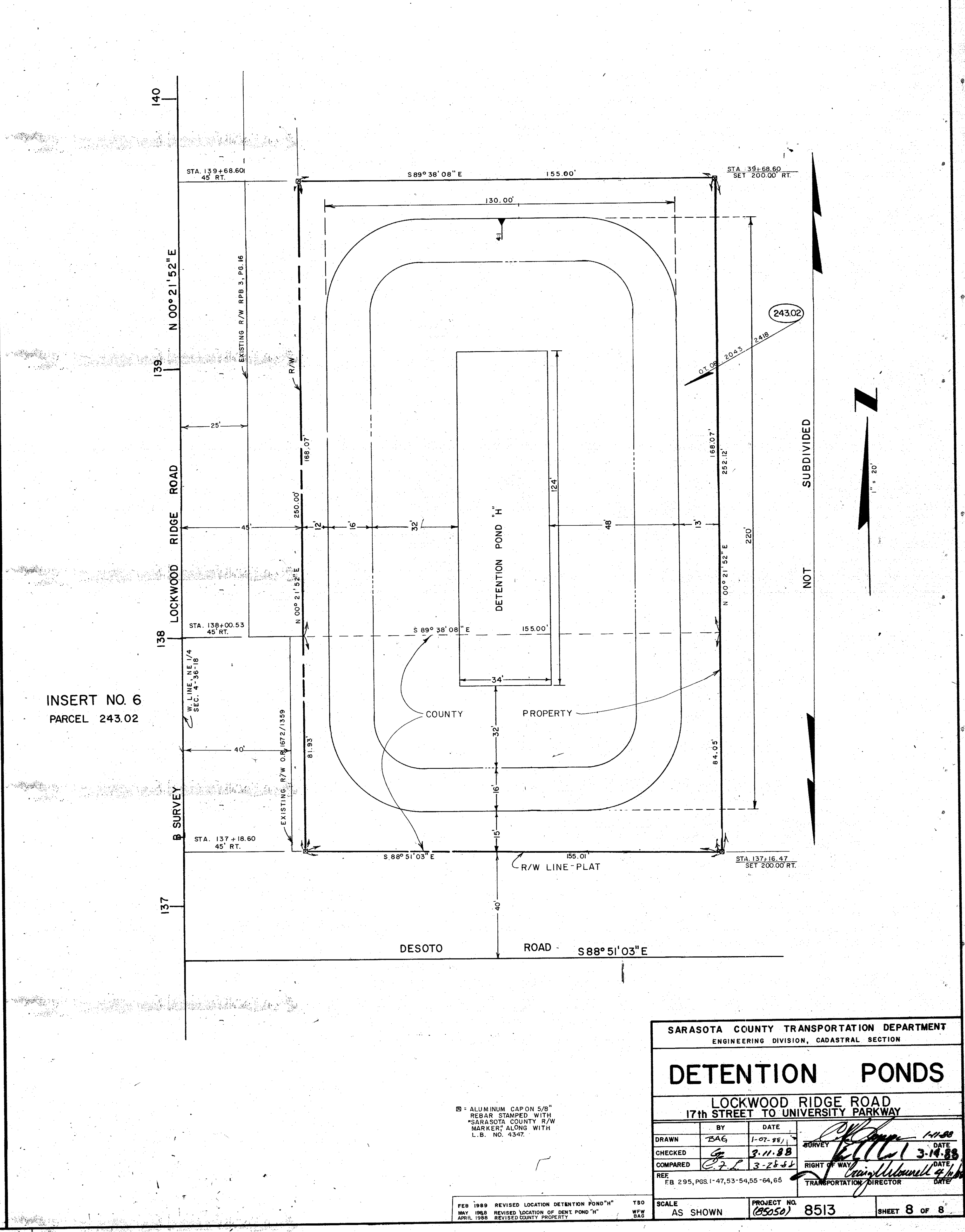
Ø = ALUMINUM CAP ON 5/8\"/>

SARASOTA COUNTY TRANSPORTATION DEPARTMENT ENGINEERING DIVISION, CADASTRAL SECTION			
<b>DETENTION PONDS</b>			
LOCKWOOD RIDGE ROAD 17TH STREET TO UNIVERSITY PARKWAY			
DRAWN	BY	DATE	SURVEY
CHECKED	GE	3-11-88	3-11-88
COMPARED	271	3-22-88	3-11-88
REF	FB 295, PGS. 1-47; 53-54, 55-64, 65	RIGHT OF WAY	DATE
SCALE	AS SHOWN	PROJECT NO. (85000)	8513
		SHEET	7 OF 8



INSERT NO. 5  
PARCEL 217.02

FILED FOR RECORD  
93 MAR 29 PM 4:57  
KAREN E. RUSHING  
CLERK OF CIRCUIT COURT  
SARASOTA COUNTY, FL



INSERT NO. 6  
PARCEL 243.02

B - ALUMINUM CAPON 5/8"  
REBAR STAMPED WITH  
SARASOTA COUNTY R/W  
MARKERS ALONG WITH  
L.B. NO. 4347.

FEB 1988 REVISED LOCATION DETENTION POND "H"  
MAY 1988 REVISED LOCATION DETENTION POND "H"  
APRIL 1988 REVISED COUNTY PROPERTY

SARASOTA COUNTY TRANSPORTATION DEPARTMENT ENGINEERING DIVISION, CADASTRAL SECTION			
<b>DETENTION PONDS</b>			
LOCKWOOD RIDGE ROAD 17th STREET TO UNIVERSITY PARKWAY			
SCALE	BY	DATE	PROJECT NO.
AS SHOWN	TAG	1-07-88	8513
	CHECKED	3-11-88	
	COMPARED	3-25-88	
	REF	FB 295, PGS. 1-47, 53-54, 55-64, 65	
		DATE	DATE
		1-11-88	3-14-88
		DATE	DATE
		3-14-88	4-11-88
		DATE	DATE