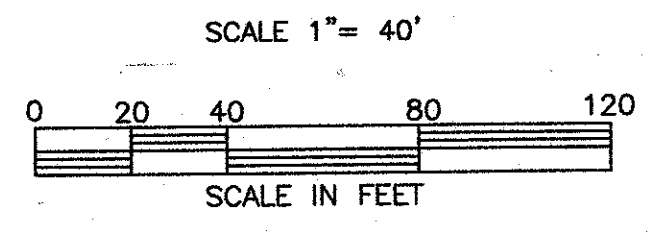
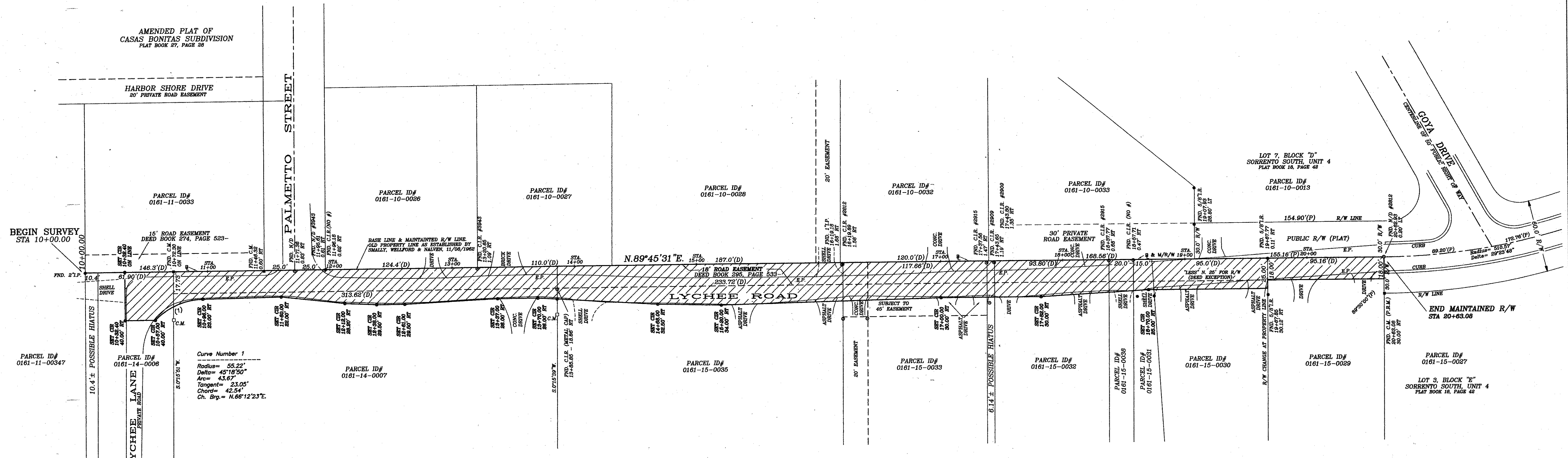
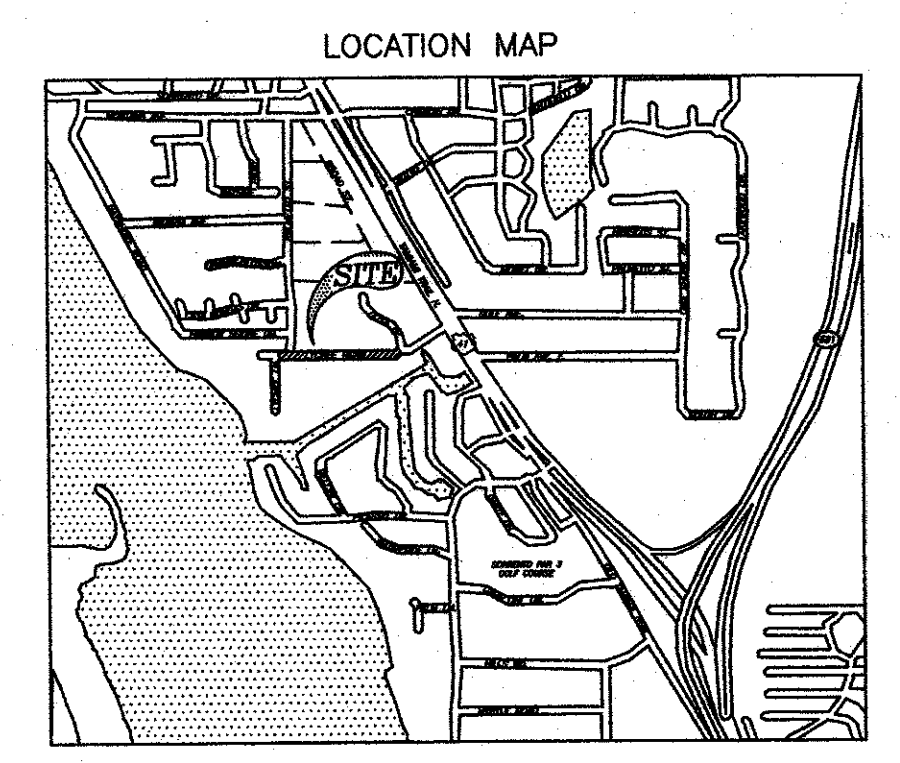


MAINTAINED RW MAP LYCHEE ROAD

FROM LYCHEE LANE TO GOYA DRIVE
IN SECTION 23, TOWNSHIP 38 SOUTH, RANGE 18 EAST
SARASOTA COUNTY, FLORIDA



FILED FOR RECORD
2006 MAY -1 AM 10:24
KAREN E. RUSHING
CLERK OF CIRCUIT COURT
SARASOTA COUNTY FL



NOTE: FOR ADDITIONAL SURVEY CONTROL, SEE PREVIOUS SURVEYS OF PARCELS ADJOINING LYCHEE ROAD, INCLUDING SURVEYS BY:
J.L. MURPHY, 3/27/1984
ARCHIE BROWN, 8/12/1987, 8/26/1989, 10/21/1971,
J. LEWIS COBIA, 1/27/1980, 10/16/1987,
SMALLY WELFORD & MALVIN, 11/08/1982,
BENNETT, BISHOP & PASSALACQUA, 10/29/1983,
E.C. STROOP, 10/15/1974, 8/22/1978,
WILLIAM REER, 7/09/1979, 10/02/1984,
RED STAKE SURVEYORS, 9/21/1988, 6/10/2002.

Curve Number 1
Radius= 55.22'
Delta= 45°19'50"
Arc= 43.67'
Tangent= 23.05'
Chord= 42.54'
Ch. Brg.= N.66°12'23"E

SURVEYOR'S NOTES

1. BEARINGS SHOWN HEREON ARE BASED ON ASSUMED DATUM, THE BASE PROPERTY LINE BEING NORTH 89°45'31" EAST.
2. THIS MAP WAS PREPARED WITHOUT THE BENEFIT OF AN ABSTRACT OF TITLE OR AN ATTORNEY'S OPINION OF TITLE. THEREOF, ANY DEED OVERLAP OR HIATUS OR ANY RECORDED OR UNRECORDED RIGHTS-OF-WAY AND OR EASEMENTS MAY NOT BE SHOWN.
3. IMPROVEMENTS SUCH AS, BUT NOT LIMITED TO, UNDERGROUND UTILITIES, LANDSCAPE FEATURES, ECT., HAVE NOT BEEN LOCATED EXCEPT AS SHOWN.
4. THIS IS NOT A BOUNDARY SURVEY.
5. A CHANGE OF JOB ON THE MAINTAINED RIGHT-OF-WAY LINE IS NOT NECESSARILY LOCATED AT AN INTERSECTING PROPERTY LINE.

SURVEYOR'S CERTIFICATE

I HEREBY CERTIFY THAT THIS MAINTAINED RIGHT-OF-WAY MAP (SHEET 1 of 1) REPRESENTS A SURVEY OF THE MAINTAINED ROAD LIMITS AS SHOWN HEREON, THAT THE SURVEY WAS RECENTLY PERFORMED UNDER MY DIRECTION, THAT IT IS TRUE AND CORRECT TO THE BEST OF MY KNOWLEDGE AND BELIEF AND THAT THE SURVEY MEETS THE MINIMUM TECHNICAL STANDARDS AS SET FORTH BY THE BOARD OF PROFESSIONAL LAND SURVEYORS IN CHAPTER 61G17, F.A.C. PURSUANT TO SECTION 472.027, FLORIDA STATUTES.

DATE OF SURVEY: 12/19/2005
ROBERT G. BRUCE
PROFESSIONAL SURVEYOR AND MAPPER NO. 4519
STATE OF FLORIDA
7123 PROCTOR ROAD
SARASOTA, FLORIDA 34241

THIS IS TO CERTIFY THAT THE NUMBERED SHEET ONE (1) OF ONE (1) CONSTITUTES THE OFFICIAL MAINTENANCE MAP SHOWING THE LOCATION AND SURVEY BY RED STAKE LAND SURVEYORS FOR LYCHEE ROAD LYING BETWEEN LYCHEE LANE AND GOYA DRIVE, BEING IN SECTION 23, TOWNSHIP 38 SOUTH, RANGE 18 EAST, SARASOTA COUNTY, FLORIDA PURSUANT TO THE PROVISIONS OF CHAPTER 95.361, FLORIDA STATUTES 2005.

THIS IS TO CERTIFY THAT THIS MAINTAINED MAP WAS APPROVED BY RESOLUTION NO. 2006-075 PASSED AND ADOPTED BY THE BOARD OF COUNTY COMMISSIONERS OF SARASOTA COUNTY, FLORIDA, ON THE 11th DAY OF MAY, A.D., 2006.

Paul R. Mills
ATTEST
KAREN E. RUSHING, CLERK OF THE CIRCUIT COURT AND EX-OFFICIO CLERK OF COUNTY COMMISSIONERS OF SARASOTA COUNTY, FLORIDA BY:
Ben Newman
DEPUTY CLERK
THIS IS TO CERTIFY THAT THE LIMITS OF THE ROADWAY OUTSIDE OF PLATTED RIGHT-OF-WAY AS SHOWN CROSS-HATCHED HEREON, HAS BEEN MAINTAINED CONTINUOUSLY FOR OVER FOUR (4) YEARS WITHOUT INTERRUPTION.
Ben Newman 02/13/06
BEN NEWMAN
ROAD & BRIDGE
OPERATIONS MANAGER

FILED OR RECORD IN ROAD PLAT BOOK 4 AT PAGE 51 OF THE PUBLIC RECORDS OF SARASOTA COUNTY FLORIDA, THIS 15th DAY OF MAY, A.D., 2006.

KAREN E. RUSHING
CLERK OF THE CIRCUIT COURT
SARASOTA COUNTY, FLORIDA
By: *Paul Hagan*
CLERK

ABBREVIATION LEGEND

B.C.C. = BOARD OF COUNTY COMMISSIONERS (M) = MEASURED	M/R/W = MAINTAINED RIGHT-OF-WAY
B = BASELINE	NO. = NUMBER
C.I.R. = CAPPIED IRON ROD	O.R. = OFFICIAL RECORDS
C.M. = CONCRETE MONUMENT	(P) = PLAT
C.M.P. = CORROGATED METAL PIPE	P.B. = PLAT BOOK
CONC. = CONCRETE	PG. = PAGE
(D) = DEED OR DESCRIPTION	P.L.S. = PROFESSIONAL LAND SURVEYOR
E.P. = EDGE OF PAVEMENT	P.R.M. = PERMANENT REFERENCE MONUMENT
F.A.C. = FLORIDA ADMINISTRATIVE CODE	R.C.P. = REINFORCED CONCRETE PIPE
FND. = FOUND	R.P.S. = ROAD PLAT BOOK
IR. = IRON ROD	RT. = RIGHT
IR/W = IRON PIPE	R/W = RIGHT OF WAY
LT. = LEFT	STA. = STATION
	T.S. = TOE OF SLOPE

LEGEND

- = IRON ROD SET WITH RED CAP
- = STAMPED COUNTY R/W PSM #4519
- = IRON PIPE OR ROD FOUND
- = CAPPIED IRON ROD OR DISC FOUND
- = CONCRETE MONUMENT FOUND

SARASOTA COUNTY PUBLIC WORKS BUSINESS CENTER CONSTRUCTION SERVICES - SURVEY OPERATIONS			
MAINTAINED RIGHT OF WAY MAP			
LYCHEE ROAD			
BY	DATE	DATE	
DRAWN	GWH	12/07/2005	2-13-06
CHECKED	RGB	12/10/2005	2-21-06
COMPARED	BDB	12/10/2005	
REF.	OPERATIONS MANAGER		
SCALE	1" = 40'	PROJECT NO.	02040533
		SHEET	1 of 1

B.C.C. RESO. 2006-075 O.R.I. 2006074260