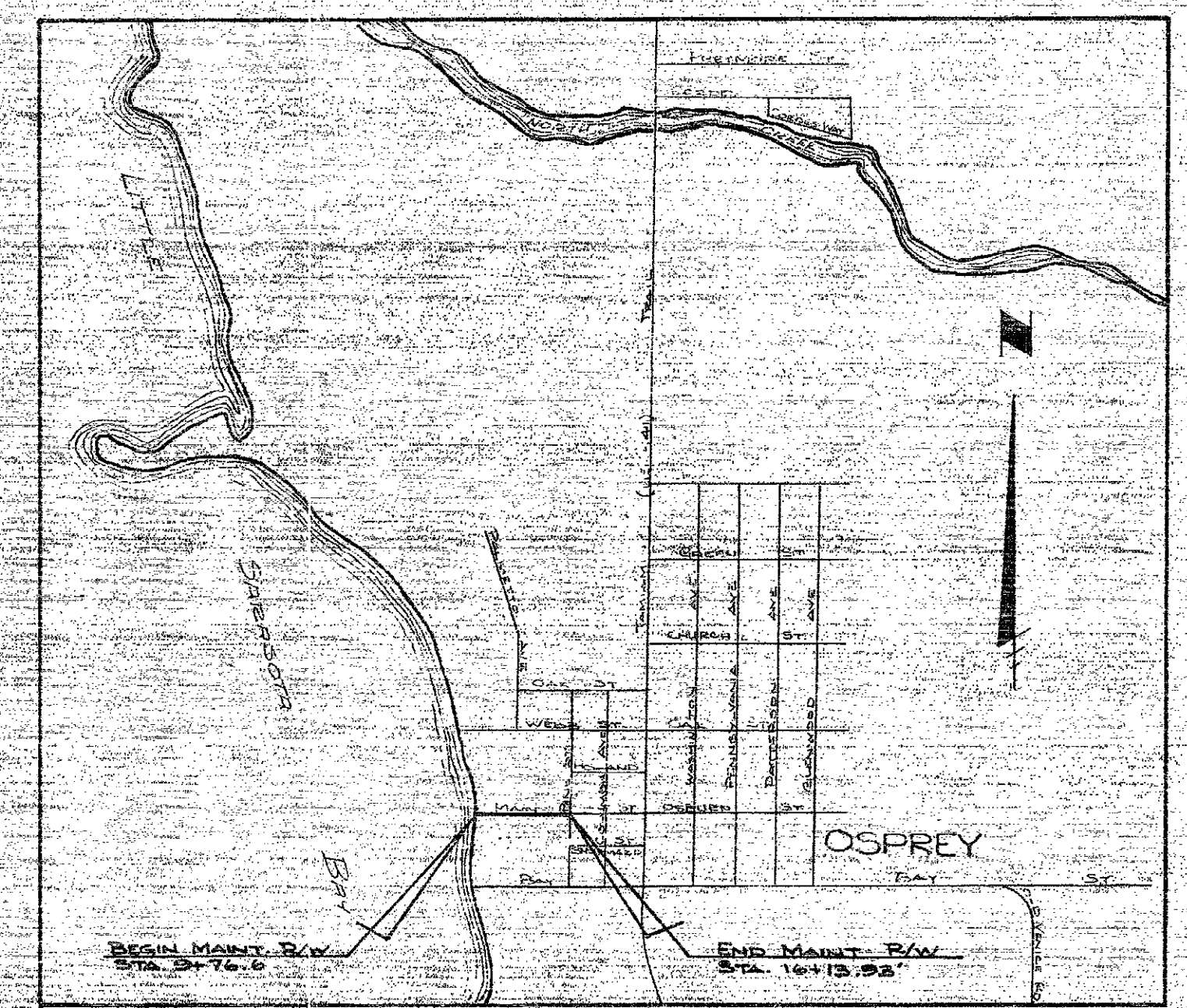
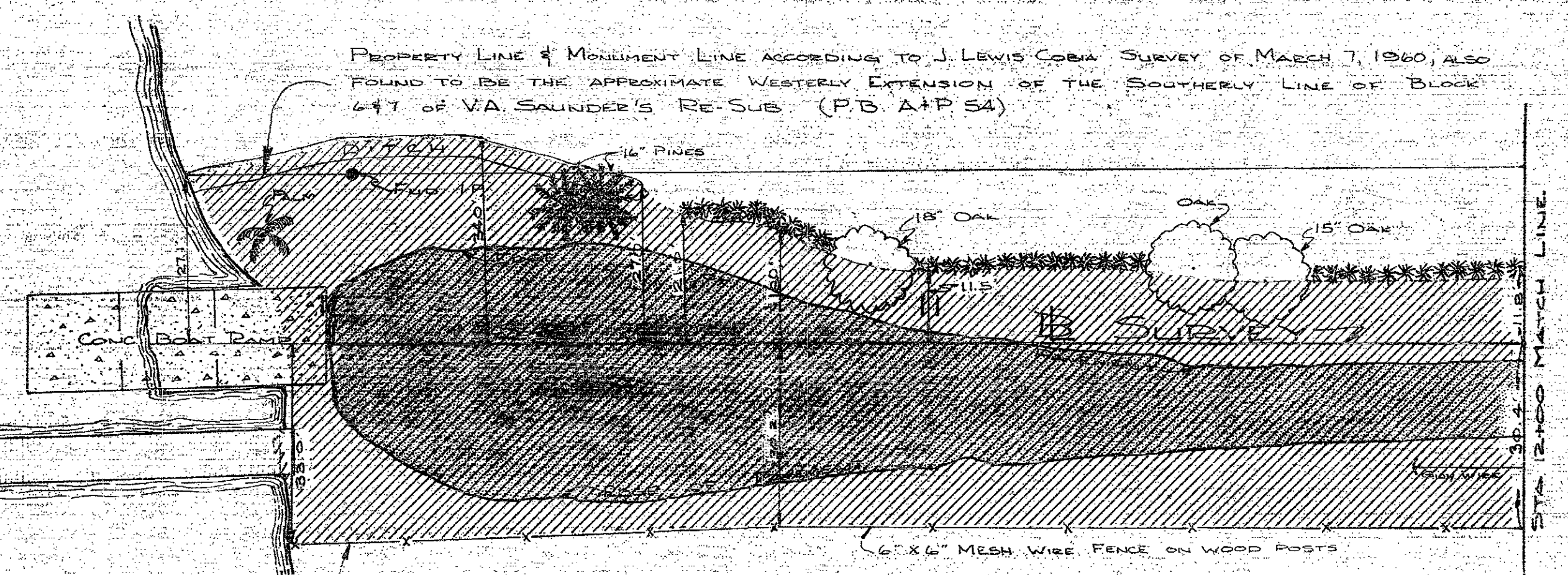
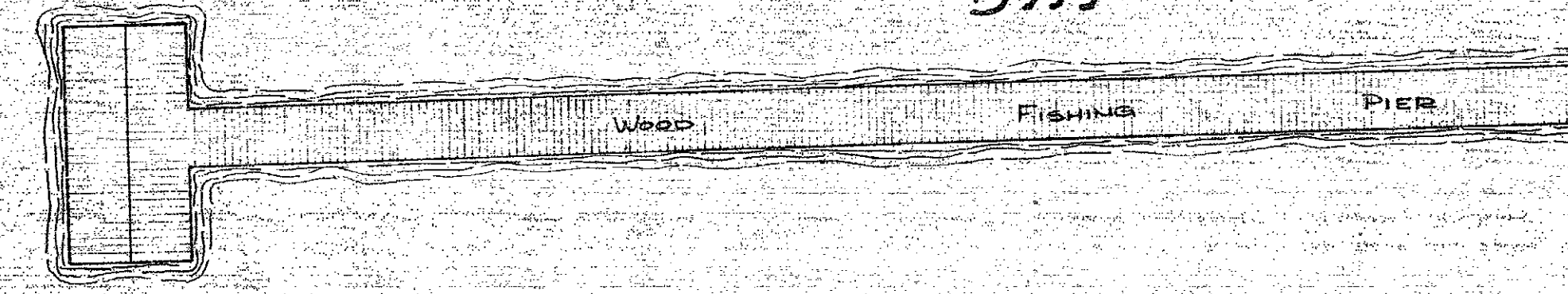
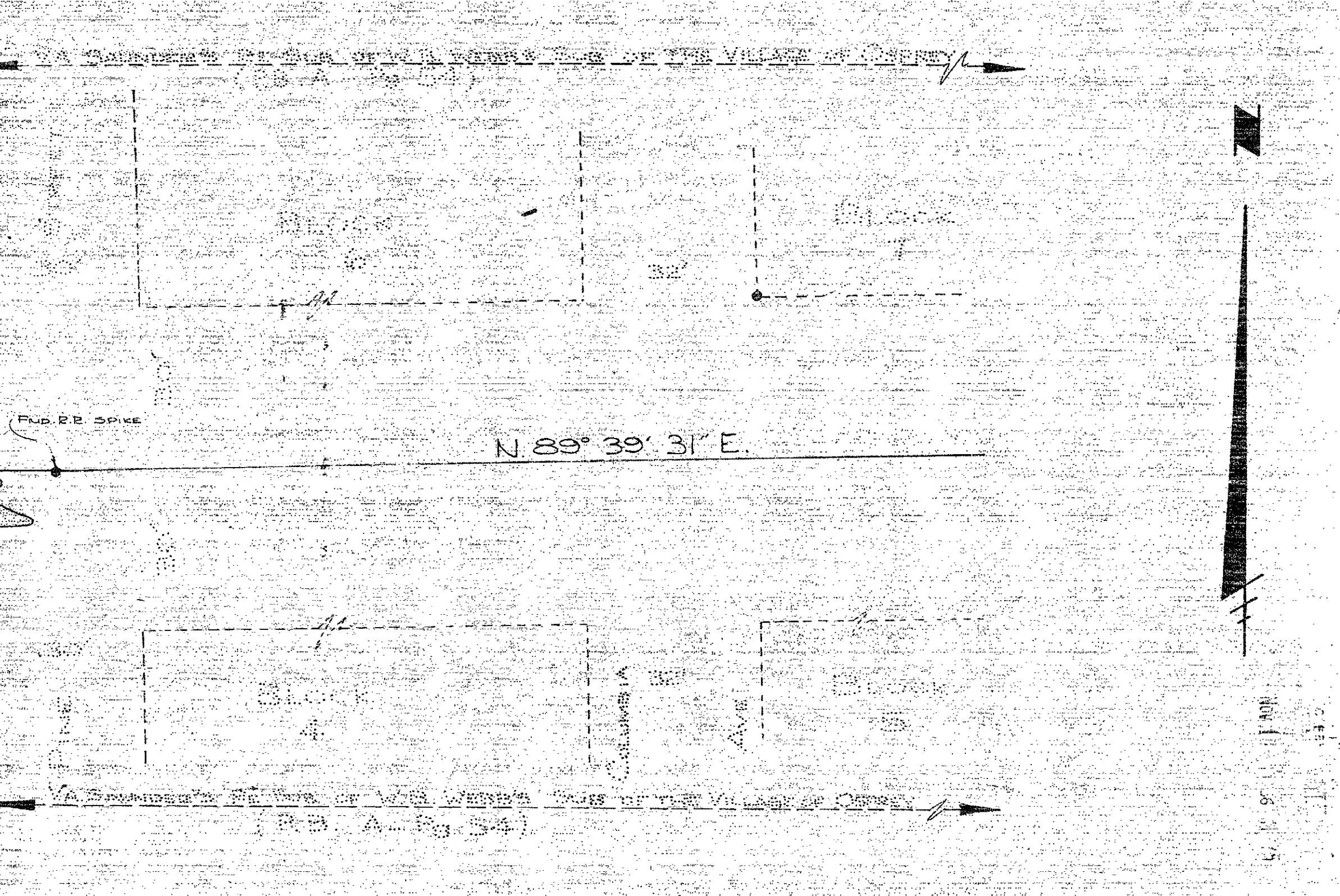
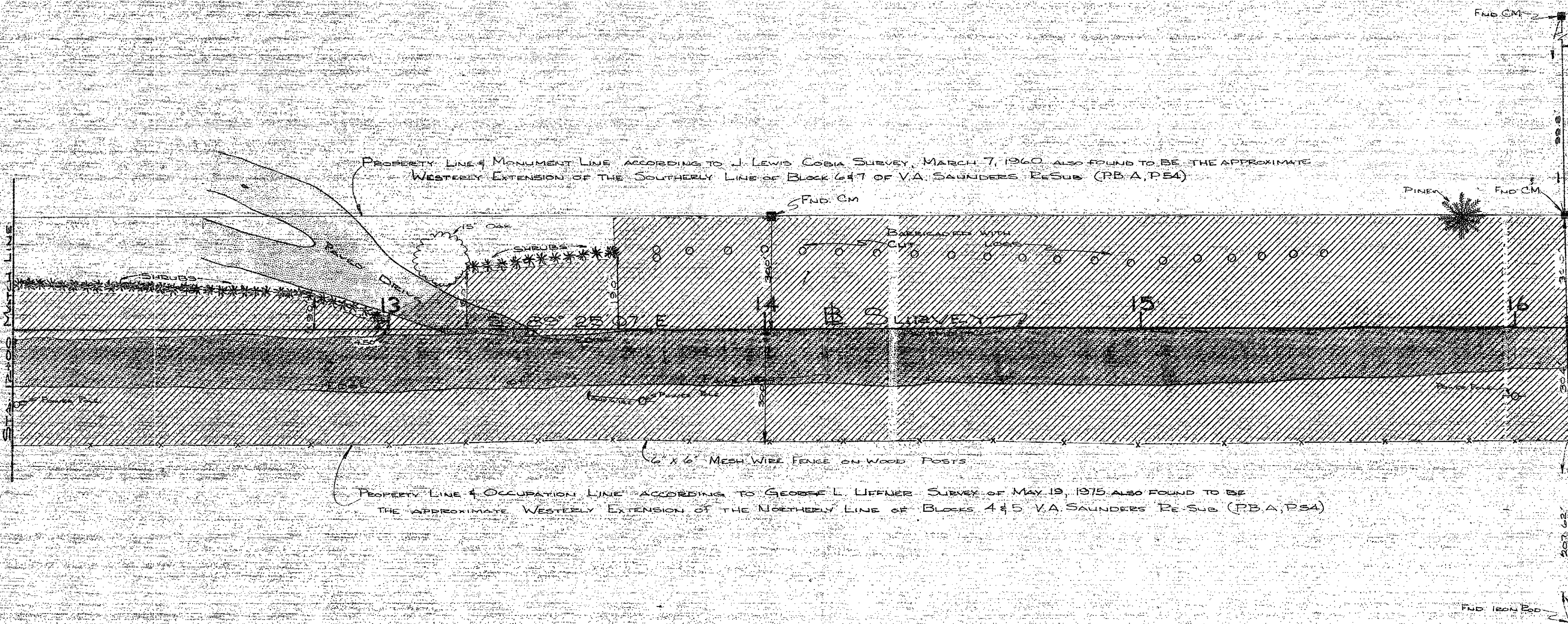


LITTLE SARASOTA BAY



LOCATION SKETCH  
NOT TO SCALE



THIS IS TO CERTIFY THAT THIS MAP NUMBERED SHEETS ONE (1) OF ONE (1) CONSTITUTES THE OFFICIAL MAINTENANCE MAP SHOWING LOCATION AND SURVEY BY SARASOTA COUNTY, FLORIDA, ENGINEERING DEPARTMENT FOR A PORTION OF MAIN STREET IN SARASOTA COUNTY, FLORIDA. THE PROPERTY SHOWN CROSS-HATCHED ON SAID MAP HAS BEEN VESTED IN SARASOTA COUNTY, FLORIDA PURSUANT TO THE PROVISIONS OF CHAPTER 25.261, FLORIDA STATUTES OF 1974 OR BY OTHER FORMAL CONVEYANCE AND OTHER INSTRUMENTS.

THIS MAINTENANCE MAP WAS APPROVED BY RESOLUTION NO. \_\_\_\_\_ PASSED AND ADOPTED BY THE BOARD OF COUNTY COMMISSIONERS OF SARASOTA COUNTY, FLORIDA ON THE \_\_\_\_\_ DAY OF \_\_\_\_\_ AD 1975 IN WITNESS WHEREOF, WE HAVE HEREUNTO SET OUR HANDS AND AFFIXED THE SEAL OF THE BOARD OF COUNTY COMMISSIONERS OF SARASOTA COUNTY, FLORIDA ON THE \_\_\_\_\_ DAY OF \_\_\_\_\_ AD 1975

ATTEST:  
BY \_\_\_\_\_  
SARASOTA COUNTY, FLORIDA  
BY \_\_\_\_\_  
CLERK OF CIRCUIT COURT OF SARASOTA COUNTY, FLORIDA

THIS IS TO CERTIFY THAT THE LIMITS OF THE ROADWAY AS SHOWN CROSS-HATCHED ON THIS MAP HAVE BEEN MAINTAINED CONTINUOUSLY FOR OVER FORTY (4) YEARS WITHOUT INTERRUPTION OR DISTURBANCE.

*J. H. Tidwell*  
SUPERINTENDENT, ROAD & BRIDGE DEPARTMENT

ACCEPTED FOR FILE AND RECORDED IN THE PUBLIC RECORDS OF SARASOTA COUNTY, FLORIDA THIS \_\_\_\_\_ DAY OF \_\_\_\_\_ A.D. 1975 IN ROAD FLAT BOOK \_\_\_\_\_ PAGE \_\_\_\_\_

CLERK OF CIRCUIT COURT OF SARASOTA COUNTY, FLORIDA

Note: Bearing shown based on DOT data from Job No. 11020-2118 SR 45 (U.S. 41)

SARASOTA COUNTY - ENGINEERING DEPARTMENT			
LAND SURVEY DIVISION			
<b>MAINTAINED</b>			
<b>RIGHT OF WAY MAP</b>			
<b>MAIN STREET (OSPREY)</b>			
FROM LITTLE SARASOTA BAY TO PINE STREET			
BY	DATE	DATE	DATE
DRAWN S.K.B.	OCT. 1975		
CHECKED D.G.H.	OCT. 1975	<i>J. H. Tidwell</i>	
COMPARED M.J.H.	OCT. 1975	<i>John J. Dill</i>	
REF. SCFB: 7507, R17-10	APPROVED		
SCALE 1" = 20'	SHEET 1 OF 1		