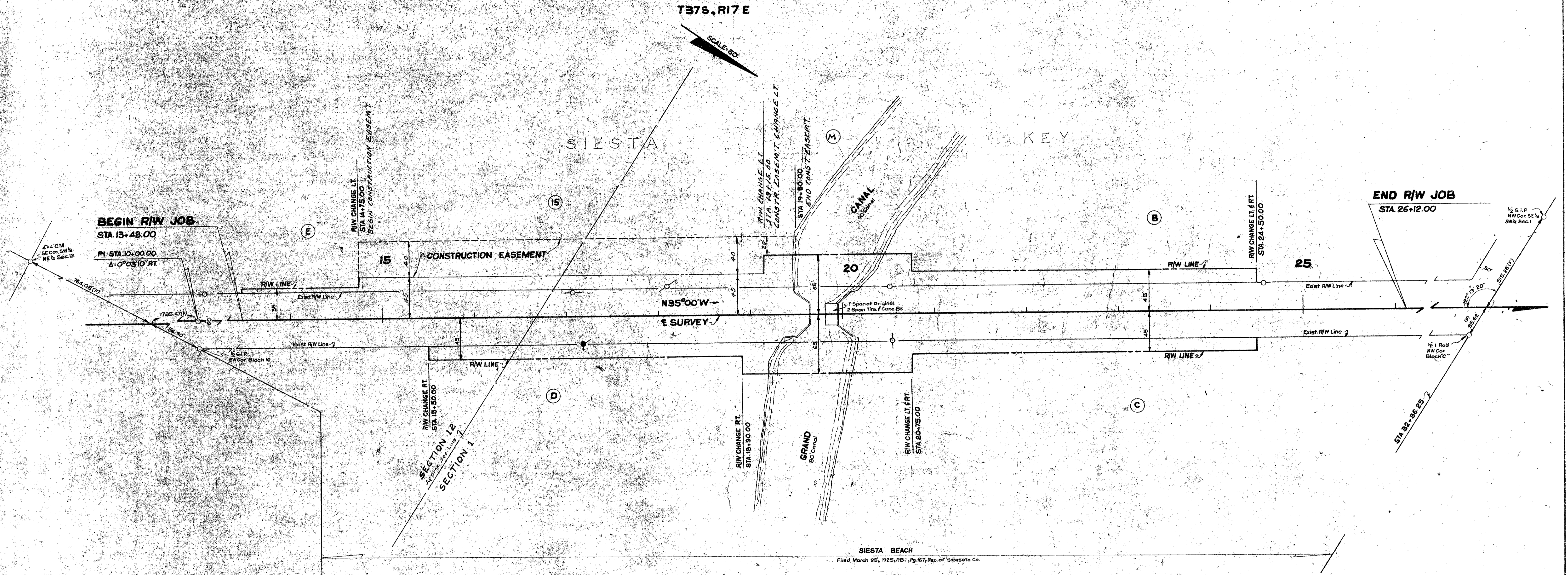


FED. ROAD DIV. NO.	STATE	PROJECT NO.	FISCAL YEAR	SHEET NO.
3	FLA.	17080-2504		1



UTILITY OWNERS
 Power.....General Telephone Co.
 Telephone.....Florida Power & Light Co.

BRIDGE No 59
(F)Indicates Field Dimension
 Plotted From F.B. 788636 & L. Notes

STATE OF FLORIDA
 STATE ROAD DEPARTMENT

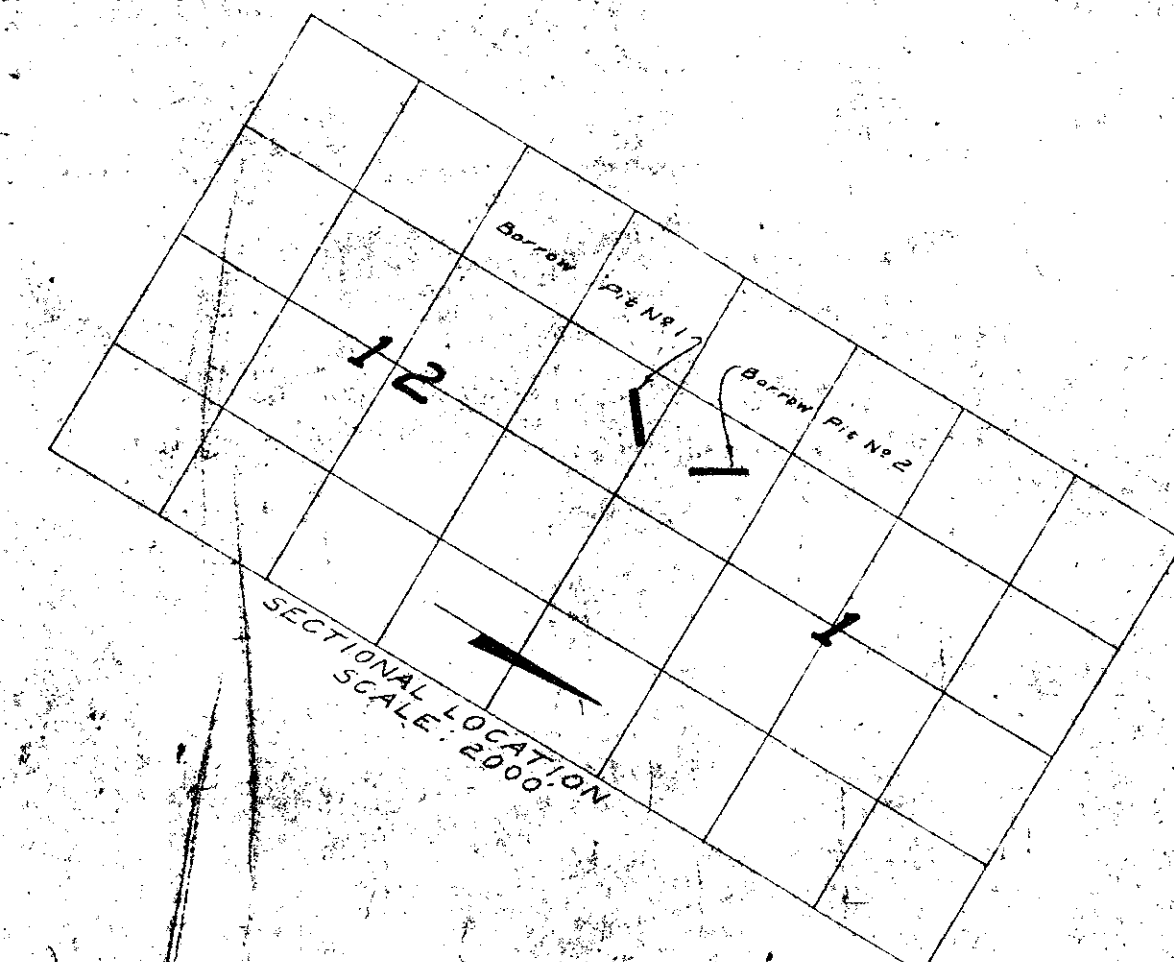
RIGHT OF WAY MAP

STATE ROAD No. 789 SARASOTA COUNTY

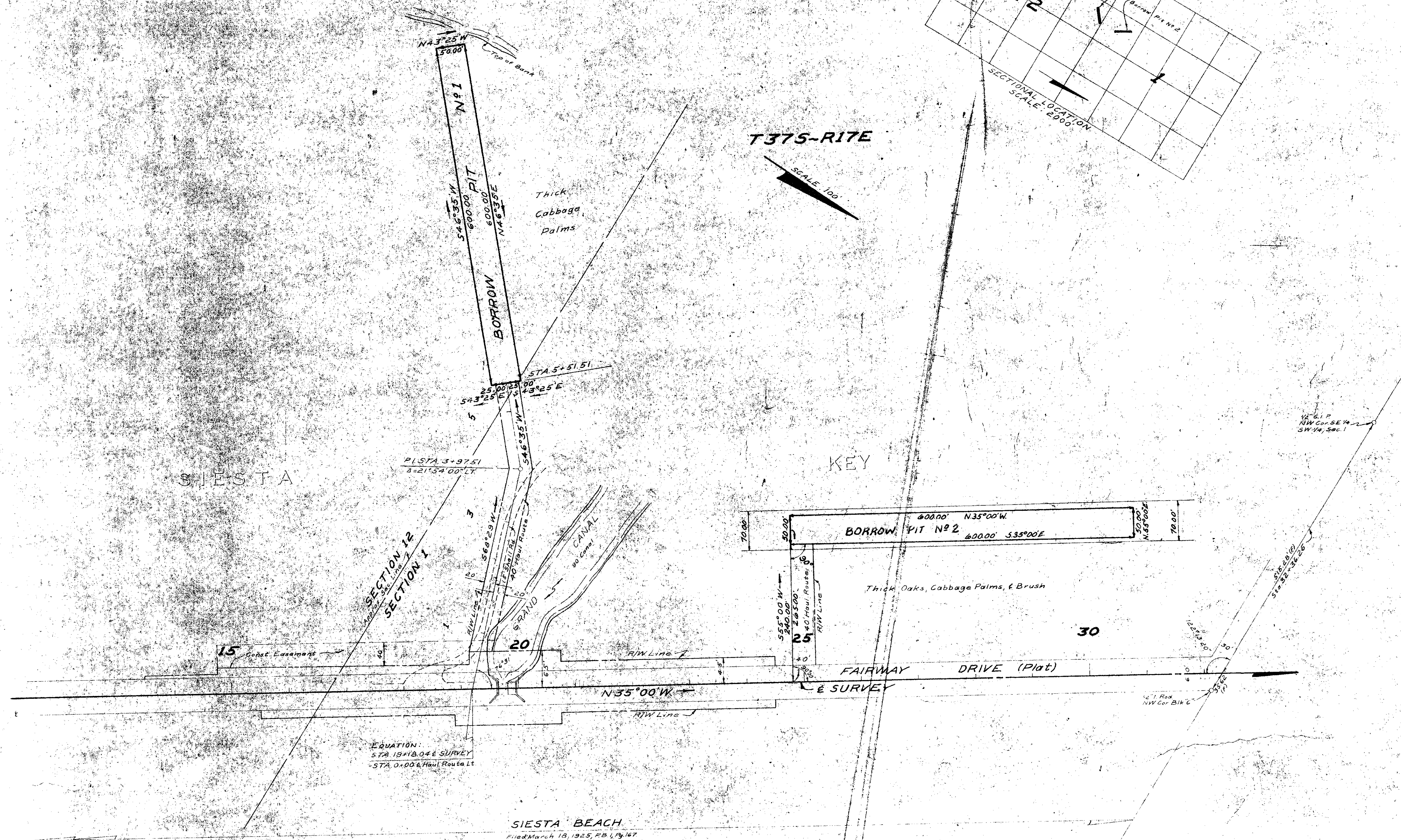
BY	DATE	APPROVED BY	DATE
DRAWN R.H.C.	6-4-65	<i>F. M. Johnson</i>	
TRACED L.R.J.	7-19-65		
CHECKED D.C.	7-19-65		
COMPARED			
INDEXED			

Correct Block No.	L.R.J. T.O.W.	8-28-65
Revised R/W	L.R.J. T.O.W.	8-18-65
CHANGED CONST. ESM. R/W	L.R.J. T.O.W.	8-3-65
REVISION	BY	DATE

SECTION 17080-2504 SHEET 1 OF



T375-RITE
 SCALE 100'



BORROW PITS
 BRIDGE N° 59

Placed from - Notes Dated July 2nd

STATE OF FLORIDA
 STATE ROAD DEPARTMENT

RIGHT OF WAY MAP

STATE ROAD No. 789 SARASOTA COUNTY

BY	DATE	APPROVED BY	DATE
DRAWN	WES 8-3-65	<i>E. M. Johnson</i> DISTRICT ENGINEER	
TRACED	CUK 8-9-65		
CHECKED	RHC 8-5-65		
COMPARED		<i>H. H. ...</i> ENGINEER OF RIGHTS OF WAY	
INDEXED			

REVISED BY DATE

SECTION 17080-2504 SHEET 2 OF

REVISED BY DATE