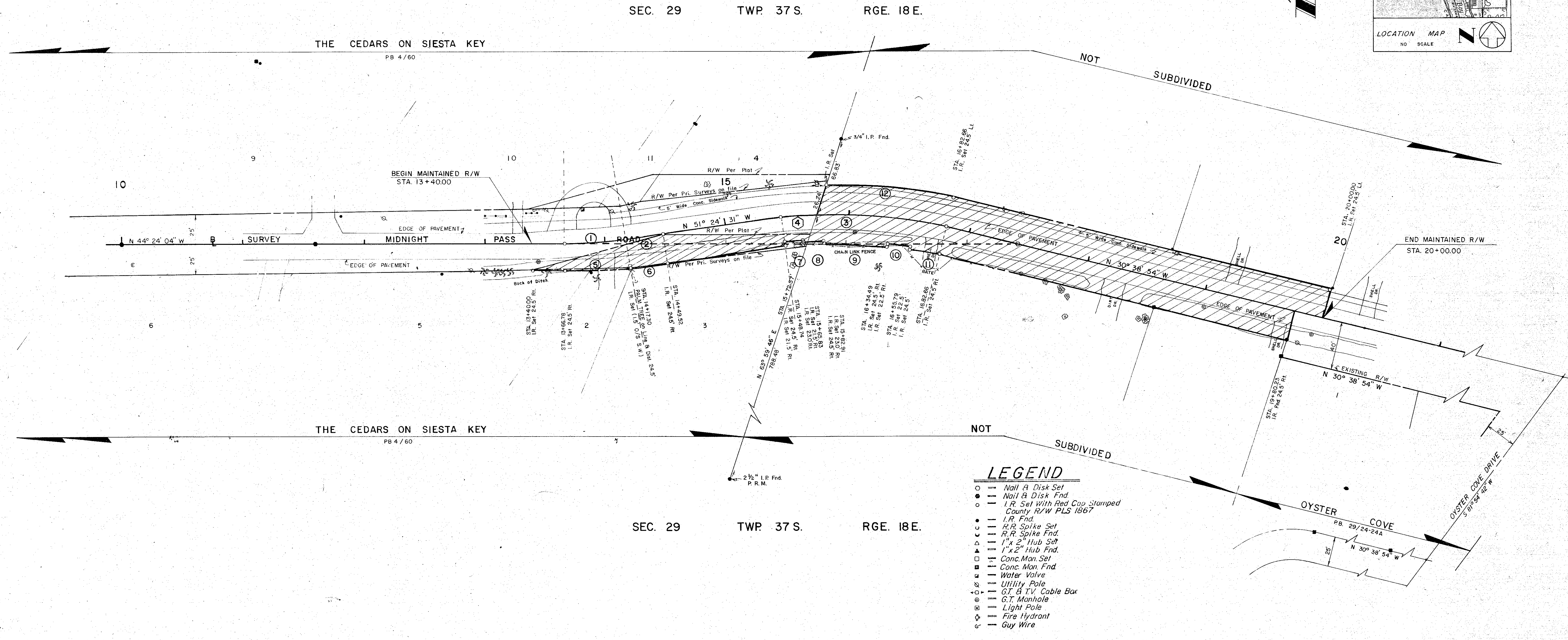
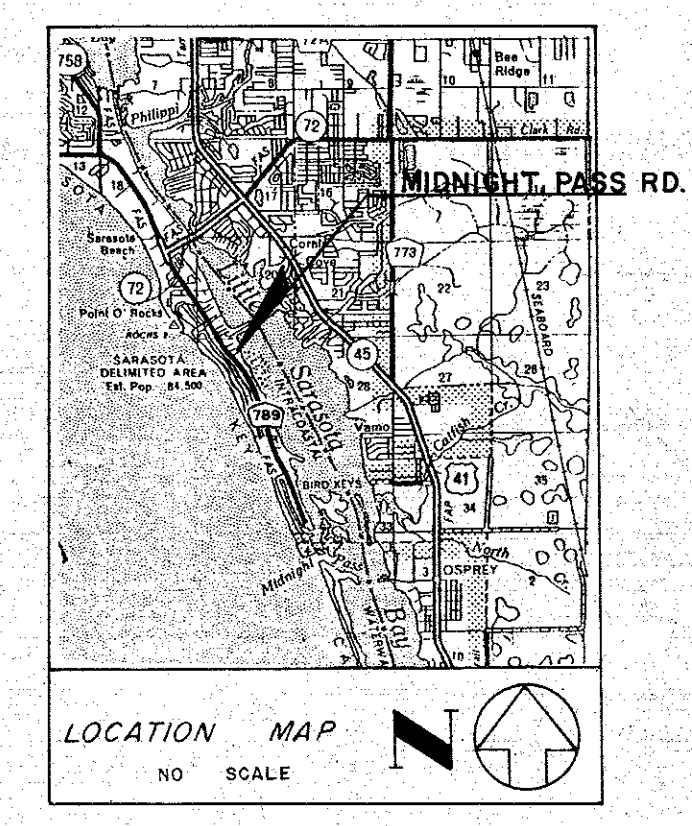


SURVEY 2 CURVE DATA			SURVEY 2 CURVE DATA		
①	②	③	④	⑤	⑥
Δ = 12° 19' 13"	Δ = 5° 18' 46"	Δ = 20° 45' 37"	Δ = 3° 41' 39"	Δ = 7° 59' 45"	Δ = 3° 18' 06"
T = 25.36'	T = 16.12'	T = 67.70'	T = 11.92'	T = 24.12'	T = 10.00'
C = 50.43'	C = 32.21'	C = 133.19'	C = 23.83'	C = 16.02'	C = 20.00'
L = 50.52'	L = 32.22'	L = 133.92'	L = 23.83'	L = 16.10'	L = 20.00'
R = 234.97'	R = 347.44'	R = 369.61'	R = 369.61'	R = 345.11'	R = 345.08'
P.C. Sta = 13+66.78	P.C. Sta = 14+17.30	P.C. Sta = 15+48.74	P.C. Sta = 15+48.74	P.C. Sta = 15+65.83	P.C. Sta = 16+34.49
P.T. Sta = 14+17.30	P.T. Sta = 14+49.52	P.T. Sta = 16+82.66	P.T. Sta = 15+72.57	P.T. Sta = 15+82.91	P.T. Sta = 16+55.79

SURVEY 2 CURVE DATA			SURVEY 2 CURVE DATA		
⑦	⑧	⑨	⑩	⑪	⑫
Δ = 12° 19' 13"	Δ = 5° 18' 46"	Δ = 2° 38' 57"	Δ = 2° 38' 52"	Δ = 7° 59' 45"	Δ = 4° 10' 00"
T = 28.00'	T = 14.98'	T = 8.05'	T = 8.01'	T = 24.12'	T = 12.55'
C = 55.69'	C = 29.93'	C = 16.09'	C = 16.02'	C = 48.12'	C = 25.09'
L = 55.79'	L = 29.94'	L = 16.10'	L = 16.02'	L = 48.16'	L = 25.09'
R = 259.47'	R = 322.94'	R = 348.11'	R = 348.11'	R = 345.11'	R = 394.11'
P.C. Sta = 13+66.78	P.C. Sta = 14+17.30	P.C. Sta = 15+48.74	P.C. Sta = 15+65.83	P.C. Sta = 16+55.79	P.C. Sta = 16+82.66
P.T. Sta = 14+17.30	P.T. Sta = 14+49.52	P.T. Sta = 15+65.83	P.T. Sta = 15+82.91	P.T. Sta = 16+55.79	P.T. Sta = 16+82.66



- LEGEND**
- — Nail & Disk Set
 - — Nail & Disk End
 - — I.R. Set With Red Cap Stamped
 - — County R/W PLS 1867
 - — I.R. End
 - — R.R. Spike Set
 - — R.R. Spike End
 - — 1" x 2" Hub Set
 - — 1" x 2" Hub End
 - — Conc. Man. Set
 - — Conc. Man. End
 - — Water Valve
 - — Utility Pole
 - — G.T. & T.V. Cable Box
 - — G.T. Manhole
 - — Light Pole
 - — Fire Hydrant
 - — Guy Wire

THIS IS TO CERTIFY THAT THE NUMBERED SHEET ONE (1) OF ONE (1) CONSTITUTES THE OFFICIAL MAINTENANCE MAP SHOWING THE LOCATION AND SURVEY BY THE SARASOTA COUNTY, FLORIDA TRANSPORTATION DEPARTMENT FOR MIDNIGHT PASS ROAD LYING BETWEEN 232' SOUTH OF THE NORTHERN BOUNDARY OF THE CEDARS ON SIESTA KEY, P.B. 4/60 AND THE SOUTHERN BOUNDARY OF OYSTER COVE, P.B. 29/24 ALL BEING IN SECTION 29, TOWNSHIP 37S, RANGE 18E, SARASOTA COUNTY, FLORIDA. THE PROPERTY SHOWN CROSS-HATCHED ON THIS MAP HAS BEEN VESTED IN SARASOTA COUNTY, FLORIDA, PURSUANT TO THE PROVISIONS OF CHAPTER 95.361, FLORIDA STATUTES OF 1983.

THIS IS TO CERTIFY THAT THIS MAINTAINED MAP WAS APPROVED BY RESOLUTION NO. 87-03 PASSED AND ADOPTED BY THE BOARD OF COUNTY COMMISSIONERS OF SARASOTA COUNTY, FLORIDA, ON THE 6th DAY OF January A.D. 1987

THIS IS TO CERTIFY THAT THE LIMITS OF THE ROADWAY OUTSIDE OF PLATTED RIGHT-OF-WAY AS SHOWN CROSS-HATCHED HEREON, HAS BEEN MAINTAINED CONTINUOUSLY FOR OVER FOUR (4) YEARS WITHOUT INTERRUPTION.

SURVEYOR'S CERTIFICATE
 I HEREBY CERTIFY THAT THIS MAINTAINED R/W MAP REPRESENTS A BOUNDARY SURVEY OF THE ROAD AS SHOWN, THAT THE SURVEY WAS RECENTLY PERFORMED UNDER MY DIRECTION, AND THAT IT IS TRUE AND CORRECT TO THE BEST OF MY KNOWLEDGE AND BELIEF, AND THAT IT MEETS THE MINIMUM TECHNICAL STANDARDS FOR LAND SURVEYING IN THE STATE OF FLORIDA (CH 21 HH-6, F.A.C.) EFFECTIVE SEPT. 1, 1981.

ACCEPTED FOR FILES AND RECORDED IN THE PUBLIC RECORDS OF SARASOTA COUNTY, FLORIDA THIS 6 DAY OF January A.D. 1986, IN ROAD PLAT BOOK 3 PAGE 19

BOARD OF COUNTY COMMISSIONERS OF SARASOTA COUNTY, FLORIDA BY
Marilyn Carleton
 CHAIRMAN

Paul Bartzke
 SUPERINTENDENT
 ROAD & BRIDGE DIVISION
 DATE 12-3-86

DATE OF SURVEY: 11-19-86

R.H. Hackney Jr.
 CLERK OF THE CIRCUIT COURT
 SARASOTA COUNTY, FLORIDA

ATTEST:
 R.H. HACKNEY JR. CLERK OF THE CIRCUIT COURT AND EX-OFFICIO CLERK OF THE BOARD OF COUNTY COMMISSIONERS OF SARASOTA COUNTY, FLORIDA BY:

SURVEYOR'S NOTES
 BEARINGS ARE BASED ON OYSTER COVE SUBDIVISION, PLAT BOOK 29/Pg. 24, THE EASTERLY R/W LINE OF MIDNIGHT PASS ROAD BEING N30°38'54" W.

E.R. Emerson
 E.R. EMERSON, COUNTY SURVEYOR
 PROFESSIONAL LAND SURVEYOR NO. 1867
 STATE OF FLORIDA
 1501 CATTLEMAN ROAD
 SARASOTA, FLORIDA 33582
 DATE 12-16-86

Sueann Thompson
 DEPUTY CLERK

SARASOTA COUNTY TRANSPORTATION DEPARTMENT ENGINEERING DIVISION, CADASTRAL SECTION			
MAINTAINED RIGHT OF WAY MAP			
MIDNIGHT PASS ROAD BETWEEN LOTS 5 & 10 OF THE CEDARS TO OYSTER COVE			
DRAWN	BY	DATE	
CHECKED	G.M.F.	12-4-86	
COMPARED	R.C.W.	11-19-86	
REF	F.B. 308 PG. 29-36		
SCALE	1" = 40'	PROJECT NO.	8647
		SHEET	1 OF 1

B.C.C. RESO. 87-03 O.R.B. 1914 PG. 2149