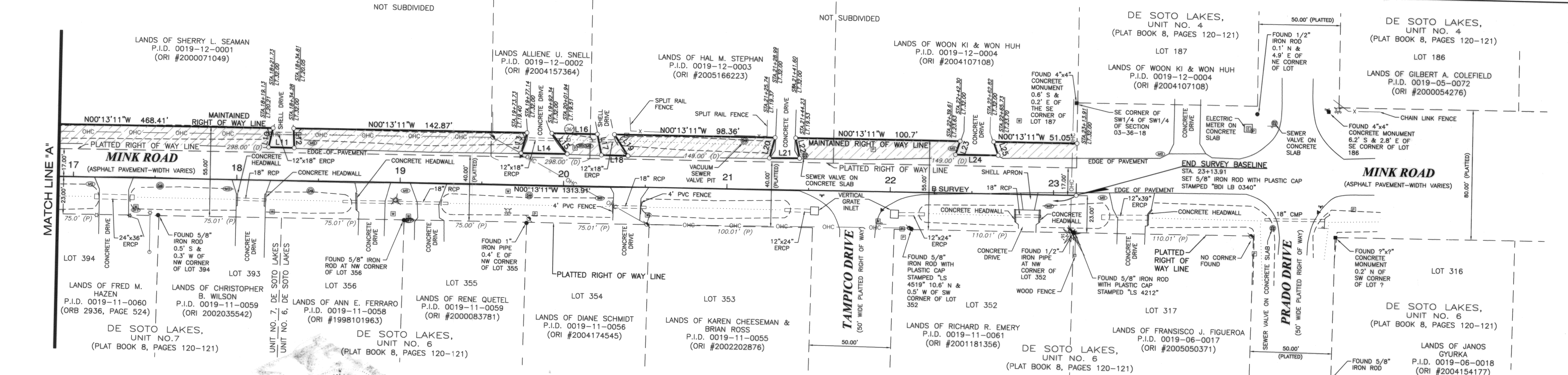


LINE TABLE

LINE	BEARING	DISTANCE
L1	S53°53'30"E	11.19'
L2	N00°52'04"E	27.84'
L3	S52°04'44"W	13.58'
L4	S69°21'08"E	12.98'
L5	N00°18'56"E	35.04'
L6	S62°35'38"W	14.07'
L7	S75°28'07"E	12.58'
L8	N00°19'34"W	18.01'
L9	S78°52'51"W	12.36'
L10	S77°48'10"E	12.07'
L11	N00°22'31"E	15.68'
L12	S87°13'21"W	11.97'
L13	S75°03'18"E	13.05'
L14	N00°26'30"W	28.22'
L15	S52°12'49"W	15.76'
L16	N00°13'11"W	27.82'
L17	N77°35'19"E	16.25'
L18	N00°31'53"E	13.06'
L19	S86°27'47"W	15.53'
L20	S75°45'17"E	13.04'
L21	N00°42'18"W	18.5'
L22	S77°51'20"W	12.75'
L23	S72°22'18"E	8.79'
L24	N00°22'00"W	26.12'
L25	S70°28'51"W	8.8'



LEGEND

THESE STANDARD SYMBOLS WILL BE FOUND IN THE DRAWING

○ SET 5/8" IRON ROD WITH PLASTIC CAP OR NAIL WITH METAL DISC STAMPED "BDI LB 0340"	✱ CYPRESS
● BENCH MARK	⊙ LIGHT POLE
▲ TRAVERSE POINT	⊙ FIRE HYDRANT
● IRON ROD OR PIPE	⊙ WATER VALVE
● CONCRETE MONUMENT	⊙ SANITARY MANHOLE
● NAIL/SPRINK	⊙ SINGLE SUPPORT SIGN
● WOOD UTILITY POLE	⊙ MULTI SUPPORT SIGN
● GUY ANCHOR	(P) SPOT ELEVATION
● ELECTRIC SERVICE BOX	(D) DEED
● WATER METER	○ CORRUGATED METAL PIPE
● BACK FLOW PREVENTER	○ REINFORCED CONCRETE PIPE
● SEWER VALVE	○ ELLIPTICAL REINFORCED CONCRETE PIPE
● TELEPHONE RISER	○ ERCP
● MAIL BOX	○ ORI
● OAK	○ ORB
● PINE	○ P.I.D.
○	○ PARCEL IDENTIFICATION
○	○ BASELINE
○	○ TOP OF BANK
○	○ DITCH/SWALE FLOW LINE
○	○ OVERHEAD UTILITY CABLES

THIS IS TO CERTIFY THAT THIS MAINTAINED MAP WAS APPROVED BY RESOLUTION NO. 001-058 PASSED AND ADOPTED BY THE BOARD OF COUNTY COMMISSIONERS OF SARASOTA COUNTY, FLORIDA, ON THE 14th DAY OF April A.D., 2011.

Karen E. Rushing
CHAIRMAN

ATTEST
KAREN E. RUSHING, CLERK OF THE CIRCUIT COURT AND EX-OFFICIO CLERK OF THE BOARD OF COUNTY COMMISSIONERS OF SARASOTA COUNTY, FLORIDA BY:

DEPUTY CLERK

THIS IS TO CERTIFY THAT THE LIMITS OF THE ROADWAY OUTSIDE OF PLATTED RIGHT-OF-WAY AS SHOWN CROSS-HATCHED HEREON, HAS BEEN MAINTAINED CONTINUOUSLY FOR OVER SEVEN (7) YEARS WITHOUT INTERRUPTION.

Gary W. Spragins 4-20-07
GARY W. SPRAGINS, FPEM
ROAD & BRIDGE OPERATIONS MANAGER

THIS IS TO CERTIFY THAT THE NUMBERED SHEET ONE OF ONE CONSTITUTES THE OFFICIAL MAINTENANCE MAP SHOWING THE LOCATION AND SURVEY BY THE SARASOTA COUNTY, FLORIDA, PUBLIC WORKS BUSINESS CENTER FOR MINK ROAD, LYING BETWEEN 47TH STREET & PRADO DRIVE, BEING IN SECTION 3, TOWNSHIP 36 S., RANGE 18 E., SARASOTA COUNTY, FLORIDA PURSUANT TO THE PROVISIONS OF CHAPTER 95.361, FLORIDA STATUTES OF 1999.

FILED OR RECORD IN ROAD PLAT BOOK 4 AT PAGE 74 OF THE PUBLIC RECORDS OF SARASOTA COUNTY FLORIDA, THIS DAY OF April A.D., 2011.

Karen E. Rushing
KAREN E. RUSHING
CLERK OF THE CIRCUIT COURT
SARASOTA COUNTY, FLORIDA

BY: *Edmond J. ...*
DEPUTY CLERK

SURVEYOR'S NOTES

1. BEARINGS SHOWN HEREON ARE BASED ON ASSUMED DATUM. THE PLATTED EAST RIGHT OF WAY LINE OF MINK ROAD, DE SOTO LAKES UNIT NO. 7, PLAT BOOK 8, PAGE 121, PUBLIC RECORDS OF SARASOTA COUNTY FLORIDA, BEING N.00°13'11"W, WAS USED;
2. THIS MAP WAS PREPARED WITHOUT THE BENEFIT OF AN ABSTRACT OF TITLE OR AN ATTORNEY'S OPINION OF TITLE, THEREOF, ANY DEED OVERLAP OR HIATUS OR ANY RECORDED OR UNRECORDED RIGHTS-OF-WAY AND OR EASEMENTS MAY NOT BE SHOWN;
3. ANY REPRODUCTION OF THIS MAP SHALL NOT BE A "CERTIFIED TRUE COPY" WITHOUT MY SIGNATURE AND DATE THEREOF IN INK, TOGETHER WITH MY EMBOSSED SEAL ON SAID COPY;
4. IMPROVEMENTS SUCH AS, BUT NOT LIMITED TO, UNDERGROUND UTILITIES, LANDSCAPE FEATURES, ETC., HAVE NOT BEEN LOCATED EXCEPT AS SHOWN;
5. THIS IS NOT A BOUNDARY SURVEY;
6. A CHANGE OR JOG ON THE MAINTAINED RIGHT-OF-WAY LINE IS NOT NECESSARILY LOCATED AT AN INTERSECTING PROPERTY LINE;

SURVEYOR'S CERTIFICATE

I HEREBY CERTIFY THAT THIS MAINTAINED RIGHT-OF-WAY MAP REPRESENTS A SURVEY OF THE MAINTAINED RIGHT OF WAY AS SHOWN HEREON, THAT THE SURVEY WAS RECENTLY PERFORMED UNDER MY DIRECTION, THAT IT IS TRUE AND CORRECT TO THE BEST OF MY KNOWLEDGE AND BELIEF AND THAT THE SURVEY MEETS THE MINIMUM TECHNICAL STANDARDS AS SET FORTH BY THE BOARD OF PROFESSIONAL LAND SURVEYORS IN CHAPTER 61G17, F.A.C. PURSUANT TO SECTION 472.027, F.S.

DATE OF FIELD SURVEY: 01-03-2007
DATE MONUMENTS SET: 03-27-2007

STEVEN E. BURKHOLDER 3/28/07
STEVEN E. BURKHOLDER, PLS
PROFESSIONAL LAND SURVEYOR
FLORIDA CERTIFICATE LS 4521



SARASOTA COUNTY PLANNING & DEVELOPMENT SERVICES
BUSINESS CENTER, SURVEYING-MAPPING

MAINTAINED RIGHT OF WAY MAP

MINK ROAD
47TH STREET TO PRADO DRIVE

DRAWN	BY	DATE
SEB2	SEB2	03-02-07
CHECKED	BY	DATE
	J. S. Owen	3-28-07
COMPARED	BY	DATE
		03-05-07
REF.	F.B. 6, PG. 12-14	
SCALE	1" = 30'	
PROJECT NO.		
SHEET	1	OF 1

M:\Survey\Sarasota projects\Area A\Mink Road ROW mapping\3505-05 Mink Road ROW_recover.dwg, Mar 28, 2007 - 12:07:41PM, shburkholder

BCC RESO. NO. 2011-068 O.R.I.