

THIS IS TO CERTIFY THAT THE NUMBERED SHEETS FIVE(S) OF FIVE(S) CONSTITUTES THE OFFICIAL MAINTENANCE MAP SHOWING THE LOCATION AND SURVEY BY THE SARASOTA COUNTY, FLORIDA, TRANSPORTATION DEPARTMENT FOR MINK RD, 42nd ST, HAUR RD, AND 47th ST LYING BETWEEN GOCIO RD AND HAROLD AVE., ALL BEING IN SECTIONS 2, 3, 10 AND 11, TOWNSHIP 36 S, RANGE 18 E, SARASOTA COUNTY, FLORIDA. THE PROPERTY SHOWN CROSS-HATCHED ON THIS MAP HAS BEEN VESTED IN SARASOTA COUNTY, FLORIDA, PURSUANT TO THE PROVISIONS OF CHAPTER 95.361, FLORIDA STATUTES OF 1987.

ACCEPTED FOR FILES AND RECORDED IN THE PUBLIC RECORDS OF SARASOTA COUNTY, FLORIDA THIS 29th DAY OF MAY A.D. 1989, IN ROAD PLAT BOOK 3 PAGE 30-308

Karen E. Rushing
 CLERK OF THE CIRCUIT COURT
 SARASOTA COUNTY, FLORIDA

THIS IS TO CERTIFY THAT THIS MAINTAINED MAP WAS APPROVED BY RESOLUTION NO. 89-497 PASSED AND ADOPTED BY THE BOARD OF COUNTY COMMISSIONERS OF SARASOTA COUNTY, FLORIDA, ON THE 21st DAY OF NOVEMBER A.D. 1989.

BOARD OF COUNTY COMMISSIONERS OF SARASOTA COUNTY, FLORIDA BY:

Earl W. Van Ho
 CHAIRMAN

ATTEST:
 KAREN E. RUSHING CLERK OF THE CIRCUIT COURT AND EX-OFFICIO CLERK OF THE BOARD OF COUNTY COMMISSIONERS OF SARASOTA COUNTY, FLORIDA BY:

Richard B. Hopler
 DEPUTY CLERK

THIS IS TO CERTIFY THAT THE LIMITS OF THE ROADWAY OUTSIDE OF PLATTED RIGHT-OF-WAY AS SHOWN CROSS-HATCHED HEREON, HAS BEEN MAINTAINED CONTINUOUSLY FOR OVER FOUR (4) YEARS WITHOUT INTERRUPTION.

Earl W. Van Ho 12-20-89
 DEPUTY DIRECTOR
 HIGHWAY MAINTENANCE

SURVEYOR'S NOTES
 BEARINGS SHOWN ARE BASED ON THE GOCIO ROAD MAINTAINED R/W MAP FILED IN ROAD PLAT BOOK 3, PAGE 26, BEING S 89° 35' 44" E.

A CHANGE OR JOG ON THE MAINTAINED RIGHT-OF-WAY LINE IS NOT NECESSARILY LOCATED AT AN INTERSECTING PROPERTY LINE.

SURVEYOR'S CERTIFICATE
 I HEREBY CERTIFY THAT THIS MAINTAINED R/W MAP REPRESENTS A BOUNDARY SURVEY OF THE ROAD AS SHOWN, THAT THE SURVEY WAS RECENTLY PERFORMED UNDER MY DIRECTION, AND THAT IT IS TRUE AND CORRECT TO THE BEST OF MY KNOWLEDGE AND BELIEF, AND THAT IT MEETS THE MINIMUM TECHNICAL STANDARDS FOR LAND SURVEYING IN THE STATE OF FLORIDA (CH. 21 HH-6, F.A.C.)

DATE OF SURVEY: 10-06-89

E. R. Emerson 10-10-89
 E. R. EMERSON, COUNTY SURVEYOR
 PROFESSIONAL LAND SURVEYOR NO. 1887
 STATE OF FLORIDA
 1301 CATTLEMAN ROAD
 SARASOTA, FLORIDA 34232-9651

SARASOTA COUNTY TRANSPORTATION DEPARTMENT
 ENGINEERING DIVISION, CADASTRAL SECTION

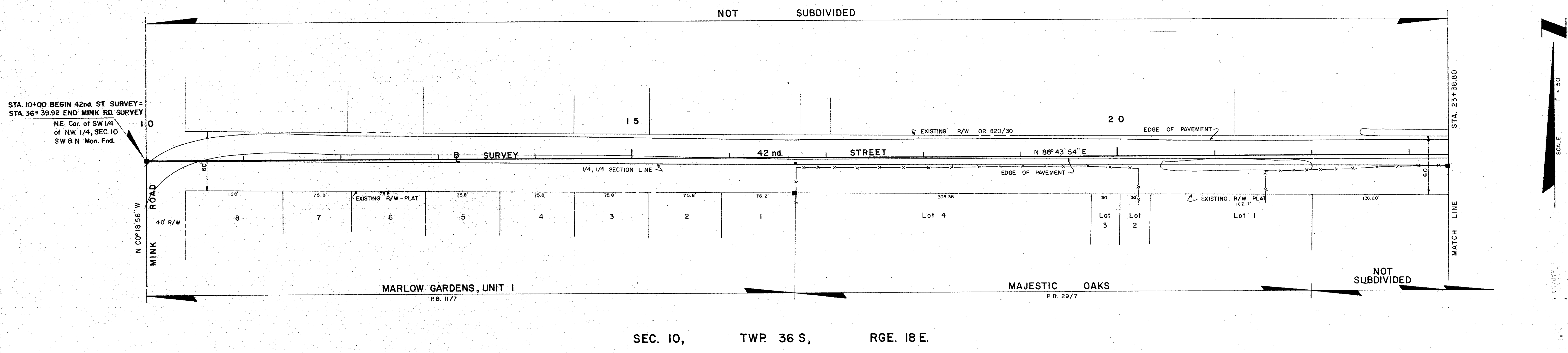
MAINTAINED RIGHT OF WAY MAP
 MINK RD., 42nd ST., HAUR RD. & 47th ST.
 GOCIO ROAD TO HAROLD AVE.

DRAWN	WFV	7-16-85
CHECKED	WFB	11-22-85
COMPARED	K.C.W.	8-14-86

DATE OF SURVEY: 10-10-89
 DATE: 10-27-89

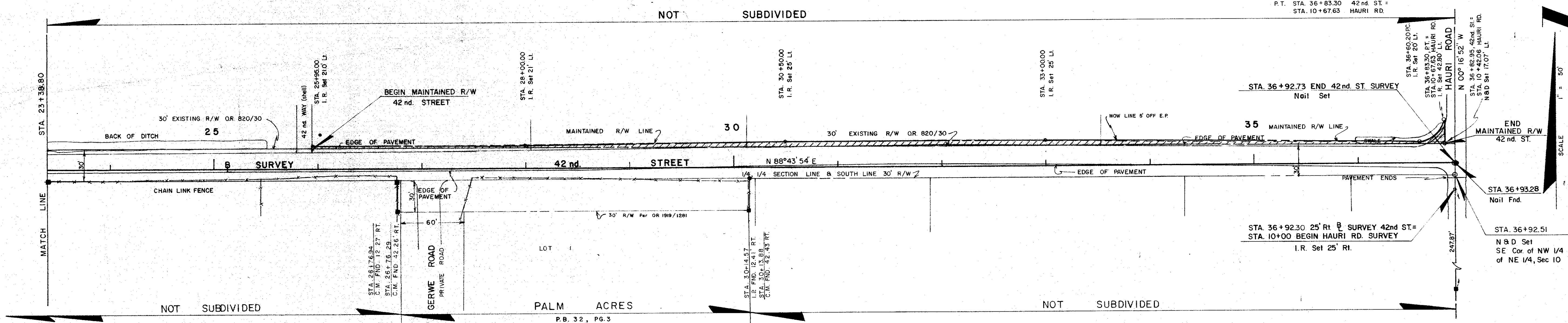
SCALE 1" = 50' PROJECT NO. 82022 SHEET 1 OF 6

ORB. 2169 PG. 824 B.C. RESO. 89-497



SEC. 10, TWP. 36 S, RGE. 18 E.

LEFT R/W CURVE DATA
 $\Delta = 90^\circ 27' 02''$
 $T = 23.12'$
 $E = 9.63'$
 $L = 36.21'$
 $R = 22.94'$
 P.C. STA. 36+60.20 42nd ST.
 P.T. STA. 36+83.30 42nd ST.
 STA. 10+67.63 HAURI RD.

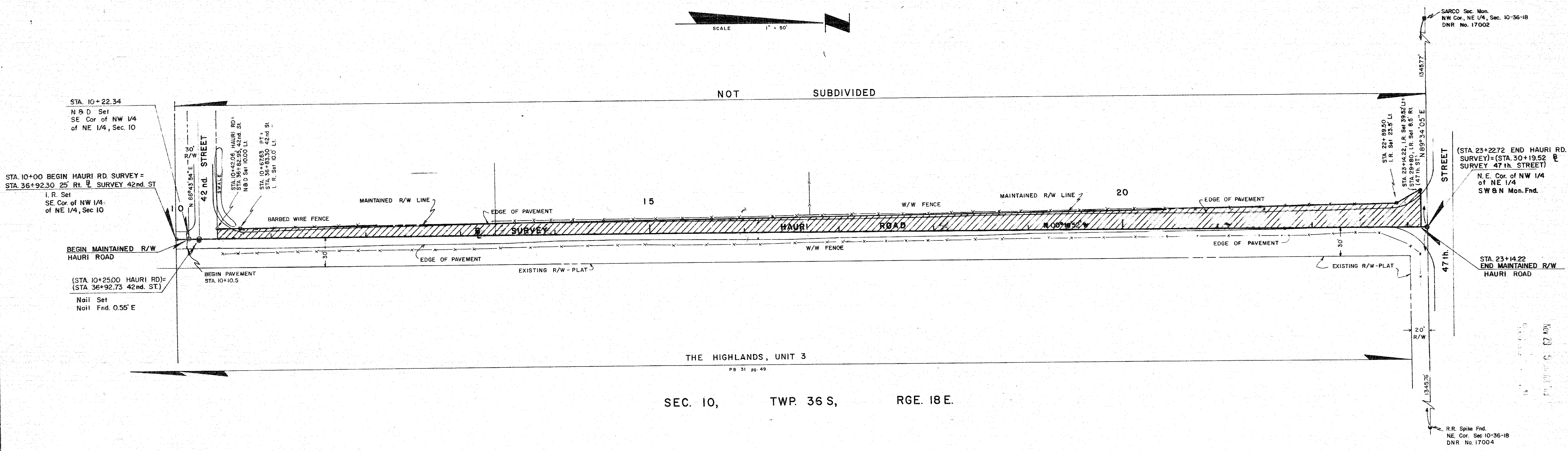
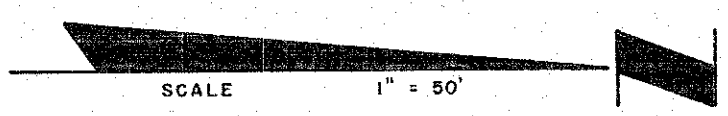


SEC. 10, TWP. 36 S, RGE. 18 E.

LEGEND

- = NAIL & DISK SET
- = NAIL & DISK FND.
- = I.R. SET WITH RED CAP STAMPED COUNTY R/W P.L.S. 1867
- = I.R. FND.
- ⊕ = R.R. SPIKE FND.
- ⊙ = DRILL HOLE SET
- △ = 1" x 2" HUB SET
- ▲ = 1" x 2" HUB FND.
- = CONC. MON. SET
- = CONC. MON. FND.
- ⊠ = WATER VALVE
- ⊕ = UTILITY POLE
- ⊞ = G.T. & TV. CABLE BOX
- ⊟ = G.T. MANHOLE
- ⊠ = LIGHT POLE
- ⊞ = FIRE HYDRANT
- ⊟ = GUY WIRE

SARASOTA COUNTY TRANSPORTATION DEPARTMENT			
ENGINEERING DIVISION, CADASTRAL SECTION			
MAINTAINED RIGHT OF WAY MAP			
MINK RD., 42nd ST., HAURI RD. & 47th ST. GOCIO ROAD TO HAROLD AVE.			
DRAWN	BY	DATE	 SURVEY DATE 10-10-89 CHECKED 7-22-86 COMPARED K.C.W. 8-14-86 REF. FB 269 PG 7-13 FB 269 PG 14 & 26-28 FB 306 PG 52-70 SCALE 1" = 50' PROJECT NO. 82022 82026 SHEET 2 OF 6
CHECKED	W.F.W.	7-16-86	
COMPARED	K.C.W.	8-14-86	
DATE	10/27/89	DATE	
REF. FB 269 PG 7-13 FB 269 PG 14 & 26-28 FB 306 PG 52-70			TRANSPORTATION DIRECTOR DATE



THE HIGHLANDS, UNIT 3
 SEC. 10, TWP. 36 S., RGE. 18 E.

SARCO Sec. Mon.
 NW Cor. NE 1/4, Sec. 10-36-18
 DNR No. 17002

(STA. 23+22.72 END HAURI RD. SURVEY) = (STA. 30+19.52 SURVEY 47th STREET)
 N.E. Cor. of NW 1/4 of NE 1/4 SW & N Mon. Fnd.

STA. 23+14.22 END MAINTAINED R/W HAURI ROAD

R.R. Spike Fnd.
 NE Cor. Sec. 10-36-18
 DNR No. 17004

LEGEND OF ABBREVIATIONS

- | | |
|---|--|
| AVE = AVENUE | NO. = NUMBER |
| B = BASELINE | N.O.S. = NATIONAL OCEAN SERVICE |
| BK = BLOCK | NW = NORTHWEST |
| BLVD = BOULEVARD | O.A. = OVER ALL |
| B.M. = BENCH MARK | O/E = OVERHEAD ELECTRIC |
| B.T.O.B. = BACK TOP OF BANK | O.R.B. = OFFICIAL RECORDS BOOK |
| C.B. = CONDOMINIUM BOOK | O.T. = ORDER OF TAKING |
| C.C.C.L. = COASTAL CONSTRUCTION CONTROL LINE | P.B. = PLAT BOOK |
| CH = CHORD | P.C. = POINT OF CURVATURE |
| CHP = CHAPTER | P.C.P. = PERMANENT CONTROL POINT |
| CH. BRG. = CHORD BEARING | PG. = PAGE |
| C = CENTERLINE | P.I. = POINT OF INTERSECTION |
| C.M. = CONCRETE MONUMENT | P.L. = PROPERTY LINE |
| C.M.P. = CORRUGATED METAL PIPE | P.L.S. = PROFESSIONAL LAND SURVEYOR |
| CO. = COUNTY | P.R.C. = POINT OF REVERSE CURVE |
| CONDO = CONDOMINIUM | P.R.M. = PERMANENT REFERENCE MONUMENT |
| CONST. = CONSTRUCTION | P.T. = POINT OF TANGENCY |
| COR. = CORNER | R = RADIUS |
| D.B. = DEED BOOK | R.C.P. = REINFORCED CONCRETE PIPE |
| D.N.R. = DEPARTMENT OF NATURAL RESOURCES | RD. = ROAD |
| D.O.T. = DEPARTMENT OF TRANSPORTATION | REF. = REFERENCE |
| DR. = DRIVE | RESUB. = RESUBDIVISION |
| DRAIN. = DRAINAGE | RNG. = RANGE |
| E. = EAST | R.P.B. = ROAD PLAT BOOK |
| EASE. = EASEMENT | R.R. = RAILROAD |
| EP = EDGE OF PAVEMENT | RT. = RIGHT |
| F.A.C. = FLORIDA ADMINISTRATION CODE | P/W. = RIGHT-OF-WAY |
| F.B. = FIELD BOOK | S. = SOUTH |
| F.D.O.T. = FLORIDA DEPARTMENT OF TRANSPORTATION | SE. = SOUTHEAST |
| FL. = FLORIDA | S.F.D.D. = SARASOTA-FRUITVILLE DRAINAGE DISTRICT |
| FND. = FOUND | SP. = STATE ROAD |
| F.P. & L. = FLORIDA POWER AND LIGHT | ST. = STREET |
| G.I.E. = GENERAL TELEPHONE ELECTRIC | STA. = STATION |
| I.P. = IRON PIPE | SUB. = SUBDIVISION |
| I.R. = IRON ROD | SW. = SOUTHWEST |
| L. = LENGTH | T. = TANGENT |
| LT. = LEFT | T.I.I.F. = TRUSTEES OF THE INTERNAL IMPROVEMENT FUND |
| M.H.W.L. = MEAN HIGH WATER LINE | TE. = TOP OF BANK |
| MON. = MONUMENT | TW. = TOWNSHIP |
| M/R/W. = MAINTAINED RIGHT-OF-WAY | U/E. = UNDERGROUND ELECTRIC |
| N. = NORTH | U.S. = UNITED STATES |
| N. & D. = NAIL AND DISC | VEG. = VEGETATION |
| NE. = NORTH EAST | W. = WEST |
| N.G.V.D. = NATIONAL GEODETIC VERTICAL DATUM | |

LEGEND

- = NAIL & DISK SET
- = NAIL & DISK FND.
- (with red cap) = LR. SET WITH RED CAP STAMPED COUNTY R/W P.L.S. 1887
- = LR. FND.
- ⊕ = R.R. SPIKE FND.
- ⊙ = DRILL HOLE SET
- △ = 1"x2" HUB SET
- ▲ = 1"x2" HUB SET
- = CONC. MON. SET
- = CONC. MON. FND.
- ⊞ = WATER VALVE
- ⊟ = UTILITY POLE
- ⊠ = G.T. & TV CABLE BOX
- ⊡ = G.T. MANHOLE
- ⊢ = LIGHT POLE
- ⊣ = FIRE HYDRANT
- ⊤ = GUY WIRE

SARASOTA COUNTY TRANSPORTATION DEPARTMENT
 ENGINEERING DIVISION, CADASTRAL SECTION

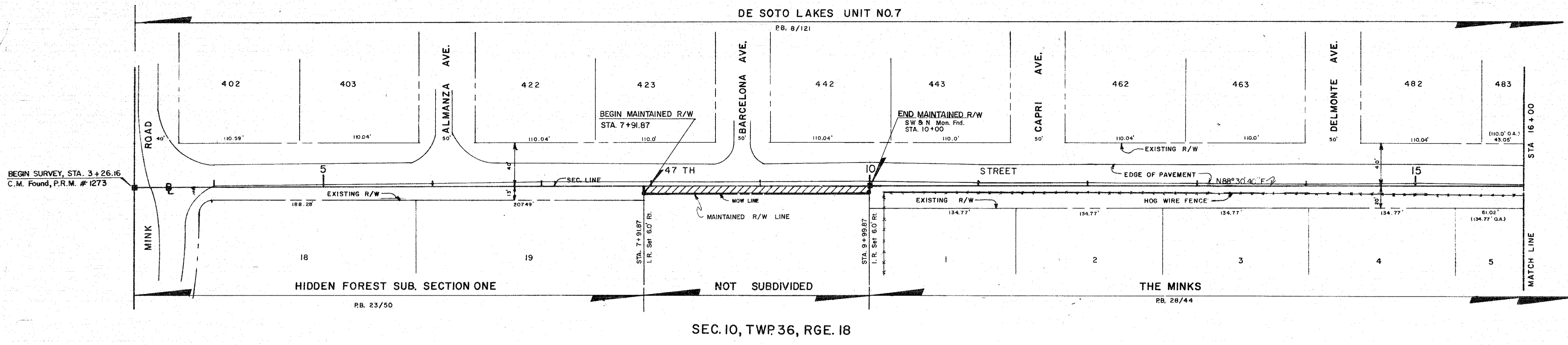
MAINTAINED RIGHT OF WAY MAP

MINK RD., 42nd ST., HAURI RD. & 47th ST.
 GOCIO ROAD TO HAROLD AVE.

DRAWN	BY	DATE	SURVEY	DATE
	WFW	7-15-95		
CHECKED		7-22-95		
COMPARED	K.C.L.	8-14-95		
REF.	F.B. 259	PG. 7-15		
	F.B. 259	PG. 18 & 28-29		
	F.B. 296	PG. 52-70		

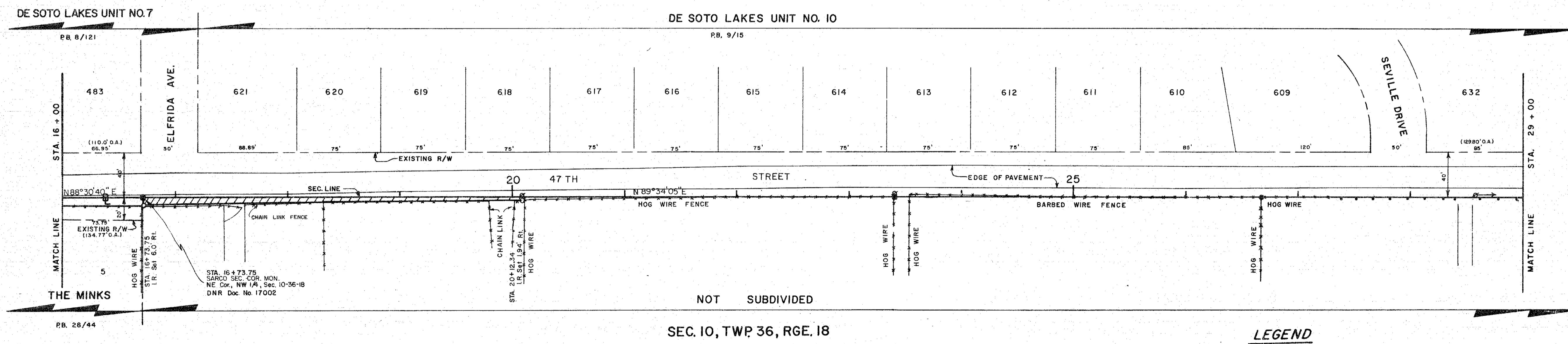
SCALE: 1" = 50' PROJECT NO.: 82022
 82025 SHEET 3 OF 6

SEC. 3, TWP 36, RGE. 18



SEC. 10, TWP 36, RGE. 18

SEC. 3, TWP 36, RGE. 18



SEC. 10, TWP 36, RGE. 18

LEGEND

- = NAIL & DISK SET
- = NAIL & DISK FND
- = I.R. SET WITH RED CAP STAMPED COUNTY R/W P.L.S. 1867
- = I.R. FND.
- ⊙ = R.R. SPIKE FND
- ⊚ = DRILL HOLE SET
- △ = 1"x2" HUB SET
- ▲ = 1"x2" HUB FND.
- = CONC. MON. SET
- = CONC. MON. FND
- ⊠ = WATER VALVE
- = UTILITY POLE
- ⊚ = ST. & TV. CABLE BOX
- ⊙ = G.T. MANHOLE
- ⊚ = LIGHT POLE
- ⊙ = FIRE HYDRANT
- ⊚ = GUY WIRE

SARASOTA COUNTY TRANSPORTATION DEPARTMENT
ENGINEERING DIVISION, CADASTRAL SECTION

MAINTAINED RIGHT OF WAY MAP

MINK RD., 42nd ST., HAURI RD. & 47th ST.
GOCIO ROAD TO HAROLD AVE.

DRAWN	BY	DATE	
	RJJ	7-16-95	
CHECKED			SURVEY
COMPALED	K.C.W.	8-14-96	DATE
REF.	F.B. 269	PG. 7-15	DATE
	F.B. 269	PG. 14 & 26-28	
	F.B. 268	PG. 52-70	

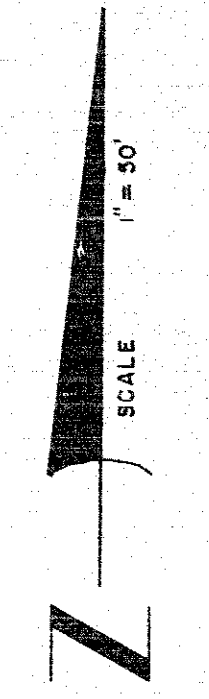
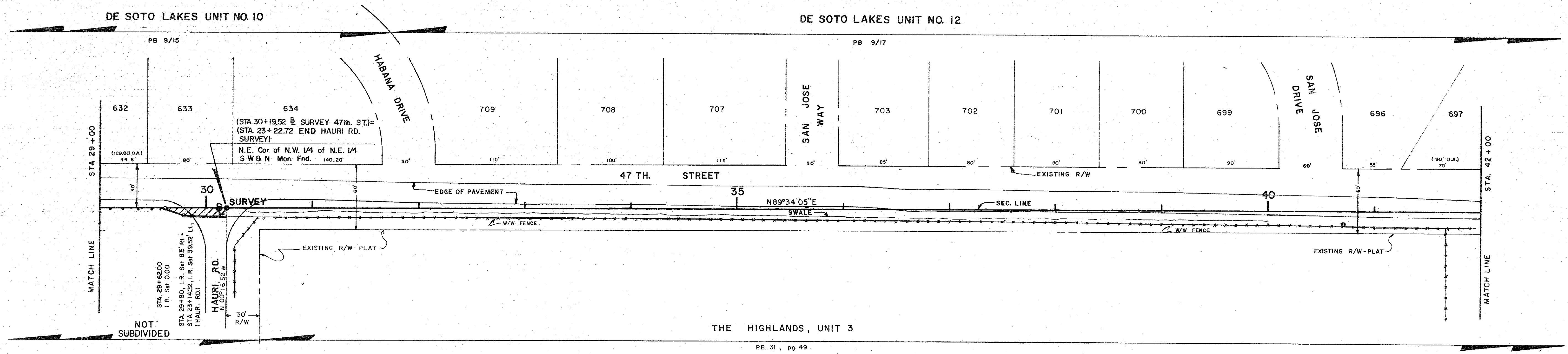
SCALE 1" = 50'

PROJECT NO. 82022
82026

SHEET 4 OF 5

FILED 48 2009
Nov 13 2009

SEC. 3, TWP. 36, RGE. 18

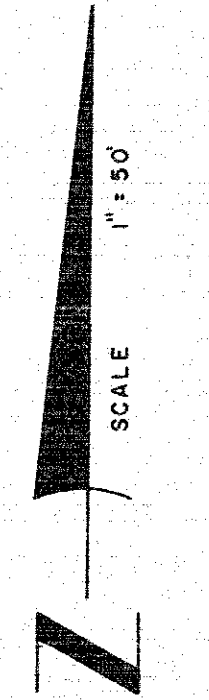
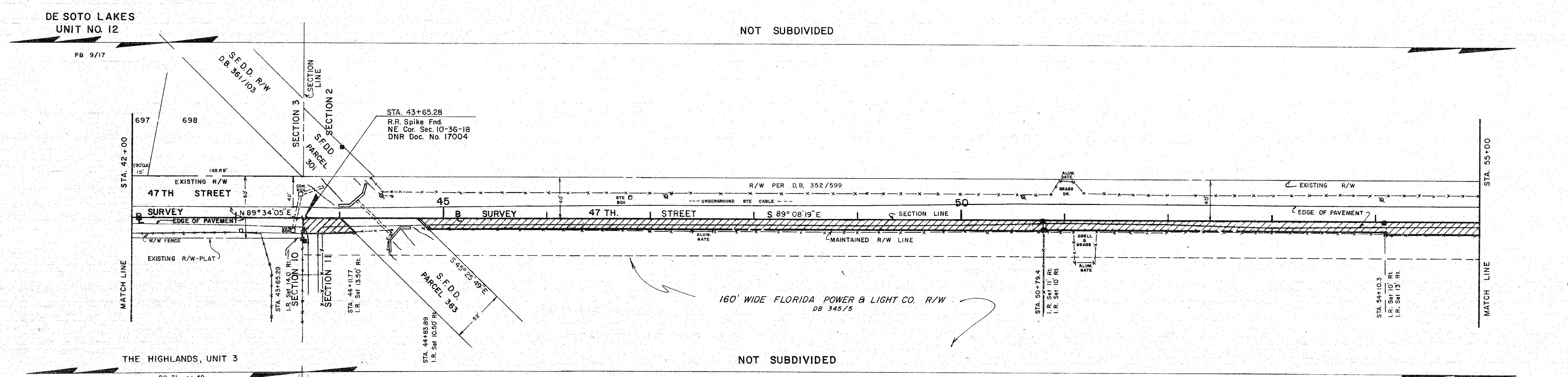


SEC. 10, TWP. 36, RGE. 18

SEC. 3, TWP. 36, RGE. 18

SEC. 2, TWP. 36, RGE. 18

NOT SUBDIVIDED



SEC. 10, TWP. 36, RGE. 18

SEC. 11, TWP. 36, RGE. 18

LEGEND

- = NAIL & DISK SET
- = NAIL & DISK FND
- = I.R. SET WITH RED CAP STAMPED COUNTY R/W P.L.S. 1067
- = I.R. FND.
- ⊙ = R.R. SPIKE FND
- ⊕ = DRILL HOLE SET
- △ = 1"x2" HUB SET
- ▲ = 1"x2" HUB FND.
- = CONC. MON. SET
- = CONC. MON. FND.
- ⊞ = WATER VALVE
- ⊚ = UTILITY POLE
- ⊞ = ST. & TV. CABLE BOX
- = ST. MANHOLE
- = LIGHT POLE
- ⊚ = FIRE HYDRANT
- ⊞ = GUY WIRE

SARASOTA COUNTY TRANSPORTATION DEPARTMENT
ENGINEERING DIVISION, CADASTRAL SECTION

MAINTAINED RIGHT OF WAY MAP

MINK RD., 42nd ST., HAURI RD. & 47th ST.
GOCIO ROAD TO HAROLD AVE.

BY	DATE
DRAWN: RJJ, WFW	7-16-86
CHECKED: RJJ	10-21-86
COMPARED: RJJ	6-16-86

REF: F.B. 269 PG. 7-13
F.B. 269 PG. 14 & 28-28
F.B. 306 PG. 52-70

SCALE: 1" = 50'

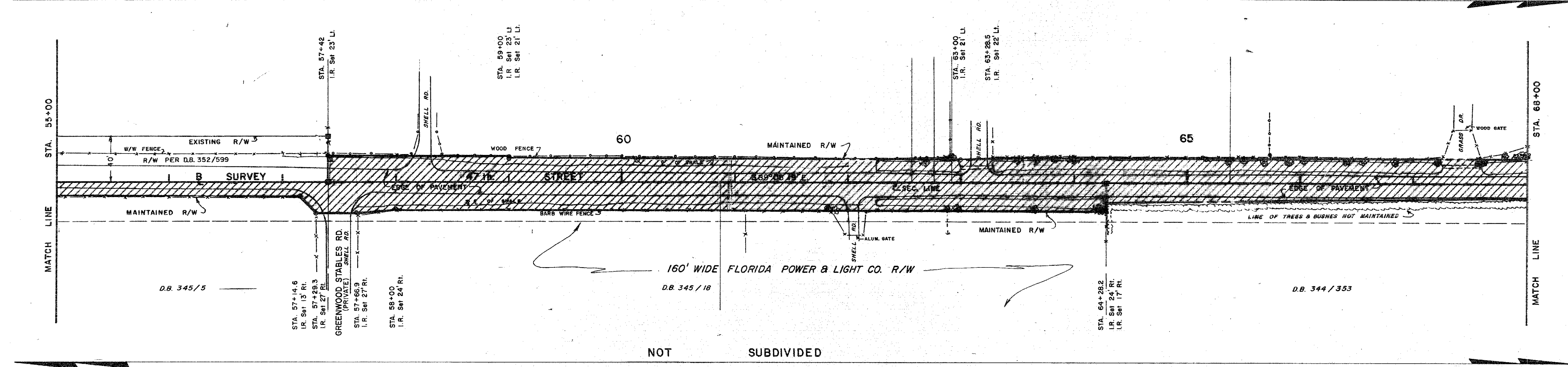
PROJECT NO. 82022
82026

SHEET 5 OF 6

FILED 80-2009PB
 Nov 29 9 57 AM '69
 CLASS. 10-21-69

SEC. 2, TWP. 36S, RGE. 18 E.

NOT SUBDIVIDED



NOT SUBDIVIDED

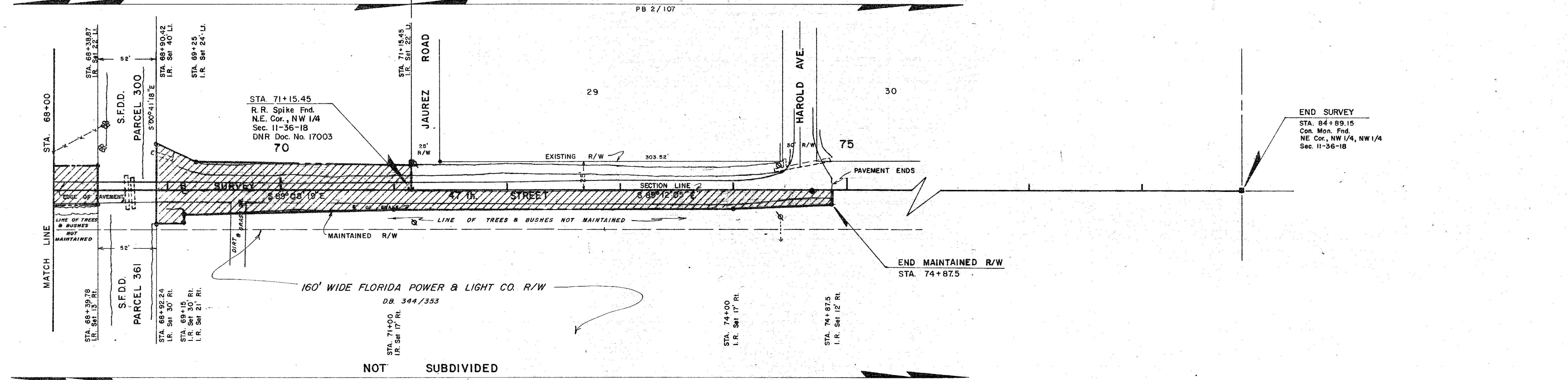
SEC. 11, TWP. 36S, RGE. 18 E.

SEC. 2, TWP. 36S, RGE. 18 E.

NOT SUBDIVIDED

SARASOTA GARDENS

PB 2/107



NOT SUBDIVIDED

SEC. 11, TWP. 36S, RGE. 18 E.

LEGEND

- = NAIL & DISK SET
- = NAIL & DISK FND.
- = I.R. SET WITH RED CAP STAMPED
- = COUNTY R/W P.L.S. 1967
- = I.R. FND.
- ⊙ = R.R. SPIKE FND.
- ⊙ = DRILL HOLE SET
- △ = 1"x2" HUB SET
- ▲ = 1"x2" HUB FND.
- = CONC. MON. SET
- = CONC. MON. FND.
- = WATER VALVE
- = UTILITY POLE
- = G.T. & T.V. CABLE BOX
- = G.T. MANHOLE
- ⊙ = LIGHT POLE
- ⊙ = FIRE HYDRANT
- ⊙ = GUY WIRE

SARASOTA COUNTY TRANSPORTATION DEPARTMENT
 ENGINEERING DIVISION, CADASTRAL SECTION

MAINTAINED RIGHT OF WAY MAP
 MINK RD., 42nd ST., HAURI RD. & 47th ST.
 GOCIO ROAD TO HAROLD AVE.

BY	DATE
WFW	9-30-66
CHECKED	10-21-66
COMPARED	10-21-66
REV.	PG. 7-13
	PG. 14 & 25-26
	PG. 52-70

SCALE 1" = 50' PROJECT NO. 82022 82026 SHEET 6 OF 5