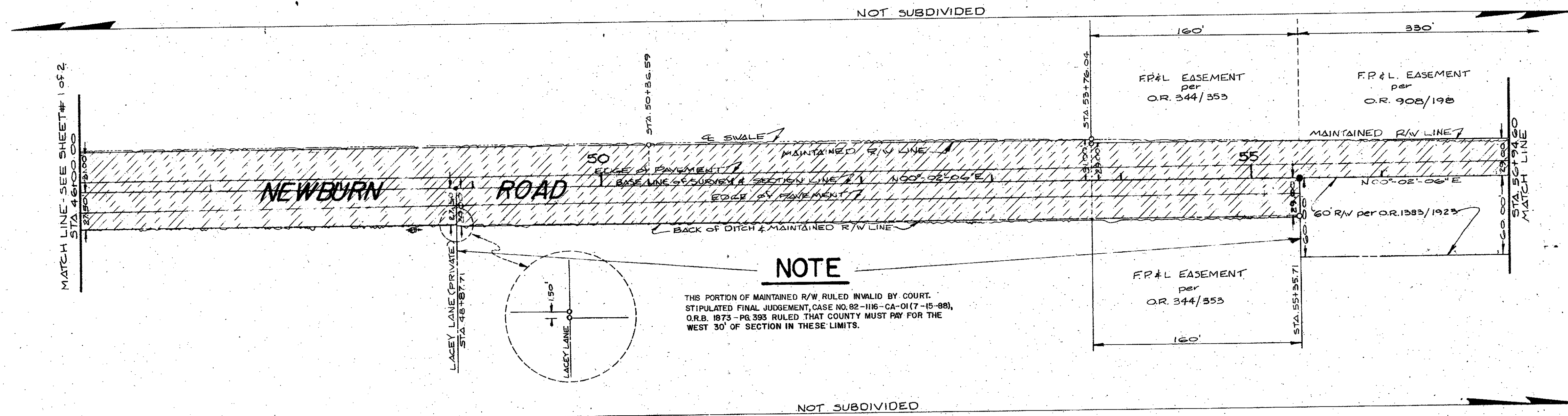


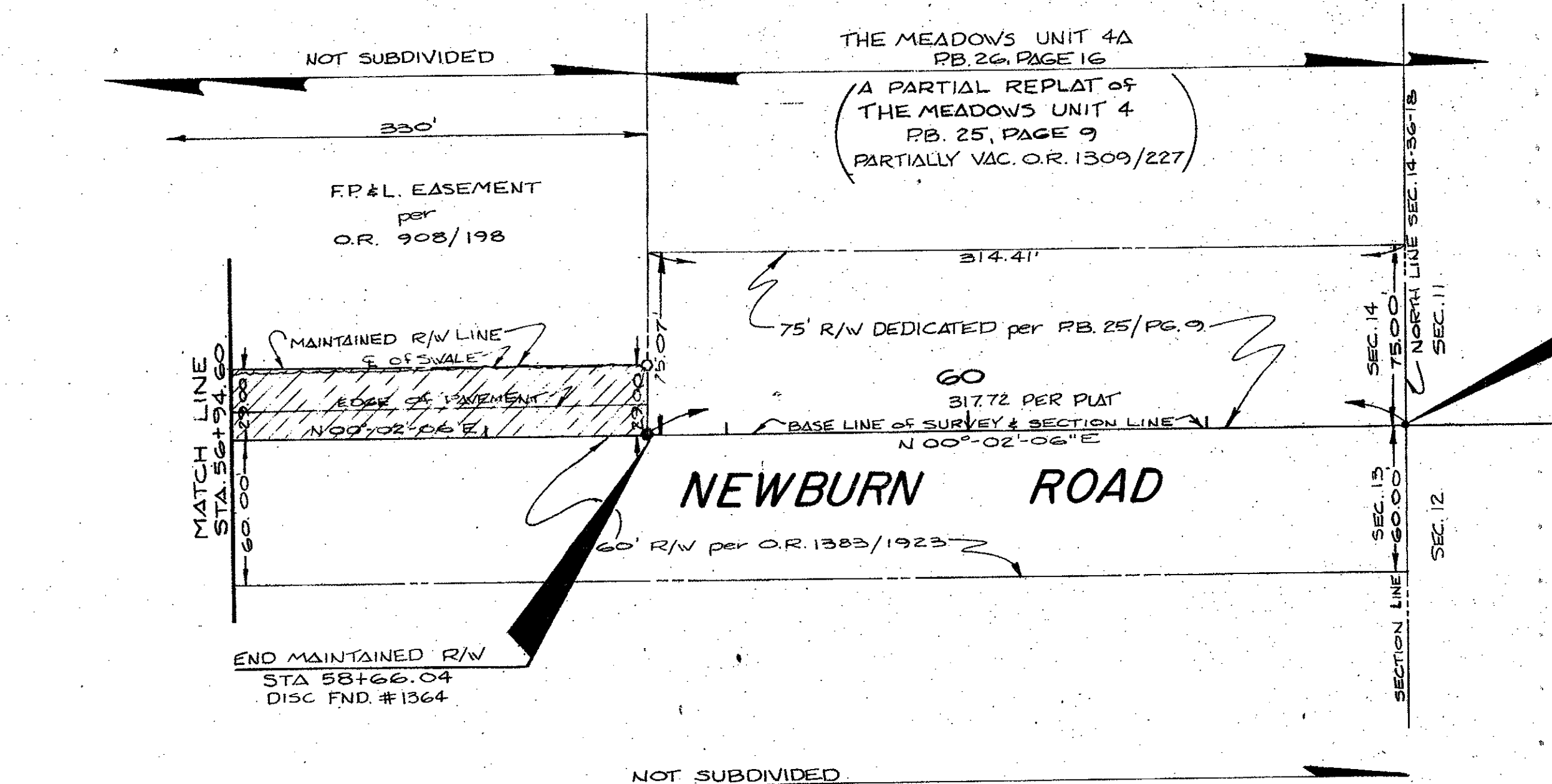


N.E. 1/4 SEC. 14, TWP. 36S., RGE. 18E.

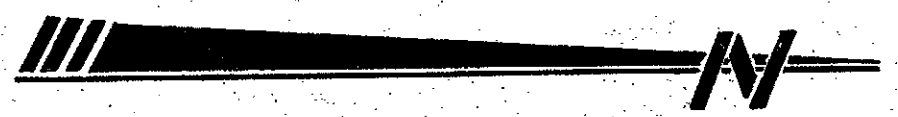


N.W. 1/4 SEC. 13, TWP. 36S., RGE. 18E.

N.E. 1/4 SEC. 14, TWP. 36S., RGE. 18E.



N.W. 1/4 SEC. 13, TWP. 36S., RGE. 18E.



**SURVEYOR'S NOTES**  
 1) BEARINGS BASED ON PLAT OF GEORGETOWNE SUBDIVISION, P.B. 27, PAGES 5-5d, PUBLIC RECORDS OF SARASOTA COUNTY, FLORIDA, E. LINE, S&¼ BEING S00°00'04"E.

**LEGEND**

- Nail & Disk Set
- Nail & Disk Fnd
- I.P. Set 1867
- I.P. Fnd.
- R.R. Spike Set
- R.R. Spike Fnd.
- △ 1" x 2" Hub Set
- ▲ 1" x 2" Hub Fnd.
- Conc. Mon. Set 1867
- Conc. Mon. Fnd.
- Water Valve
- ⊕ Telephone Pole
- ⊖ G.T. Manhole

**SURVEYOR'S CERTIFICATE**

I HEREBY CERTIFY THAT THIS MAINTAINED R/W MAP REPRESENTS A BOUNDARY SURVEY OF THE ROAD AS SHOWN, THAT THE SURVEY WAS RECENTLY PERFORMED UNDER MY DIRECTION, AND THAT IT IS TRUE AND CORRECT TO THE BEST OF MY KNOWLEDGE AND BELIEF, AND THAT IT MEETS THE MINIMUM TECHNICAL STANDARDS FOR LAND SURVEYING IN THE STATE OF FLORIDA (CH. 2111-6, F.A.C.) EFFECTIVE SEPT. 1, 1981.  
 DATE OF SURVEY: 4-18-85

*John J. Emerson* 6-7-85  
 EMERSON COUNTY SURVEYOR DATE  
 PROFESSIONAL LAND SURVEYOR No. 1867  
 STATE OF FLORIDA  
 1501 CATTLEMAN RD.  
 SARASOTA, FL. 33582

THIS IS TO CERTIFY THAT THE LIMITS OF THE ROADWAY OUTSIDE OF THE PLATTED RIGHT-OF-WAY AS SHOWN CROSS-HATCHED HEREON, HAS BEEN MAINTAINED CONTINUOUSLY FOR OVER FOUR YEARS WITHOUT INTERRUPTION.

*Paul Joseph* 5-21-85  
 SUPERINTENDENT  
 ROAD & BRIDGE DIVISION

THIS IS TO CERTIFY THAT THIS MAP NUMBERED SHEETS ONE (1) AND TWO (2) CONSTITUTES THE OFFICIAL MAINTENANCE MAP SHOWING LOCATION AND SURVEY BY SARASOTA COUNTY, FLORIDA TRANSPORTATION DEPARTMENT FOR THAT PORTION OF NEWBURN ROAD FROM RICHARDSON ROAD TO THE MEADOWS IN SARASOTA COUNTY, FLORIDA. THE PROPERTY SHOWN CROSS-HATCHED ON SAID MAP HAS BEEN VERIFIED IN SARASOTA COUNTY, FLORIDA PURSUANT TO THE PROVISIONS OF CHAPTER 95.261, FLORIDA STATUTES OF 1985.

THIS IS TO CERTIFY THAT THIS MAINTENANCE MAP WAS APPROVED BY RESOLUTION PASSED AND ADOPTED BY THE BOARD OF COUNTY COMMISSIONERS OF SARASOTA COUNTY, FLORIDA ON THE DAY OF July A.D. 1985.  
*James M. Elmurray*  
 BOARD OF COUNTY COMMISSIONERS  
 OF SARASOTA COUNTY, FLORIDA  
 (CHAIRMAN)

ACCEPTED FOR FILE AND RECORDED IN THE PUBLIC RECORDS OF SARASOTA COUNTY, FLORIDA THIS 28th DAY OF July A.D. 1985 IN ROAD PLAT BOOK 2 PAGE 62A

ATTEST:  
 R.H. HACKNEY JR., CLERK OF THE CIRCUIT COURT AND EX-OFFICIO CLERK OF THE BOARD OF COUNTY COMMISSIONERS OF SARASOTA COUNTY, FLORIDA.  
*R.H. Hackney Jr.*  
 DEPUTY CLERK

SARASOTA COUNTY TRANSPORTATION DEPARTMENT  
 ENGINEERING DIVISION, CADASTRAL SECTION

**MAINTAINED R/W MAP**

NEWBURN ROAD  
 RICHARDSON ROAD TO 1296' NORTH OF LACEY LANE

DRAWN	J.R.O.	DATE	4-29-85	SURVEYED	<i>John J. Emerson</i>	DATE	6-7-85
CHECKED	<i>Paul Joseph</i>	DATE	6/4/85	DESIGNED	<i>John J. Emerson</i>	DATE	6-21-85
COMPARED	<i>J.R.O.</i>	DATE	6-6-85	APPROVED	<i>Paul Joseph</i>	DATE	6-21-85
REF. P.B. 258, PG. 42-44				TRANSPORTATION DIRECTOR		DATE	

SCALE 1"=50' PROJECT NO. 85030 SHEET 2 OF 2