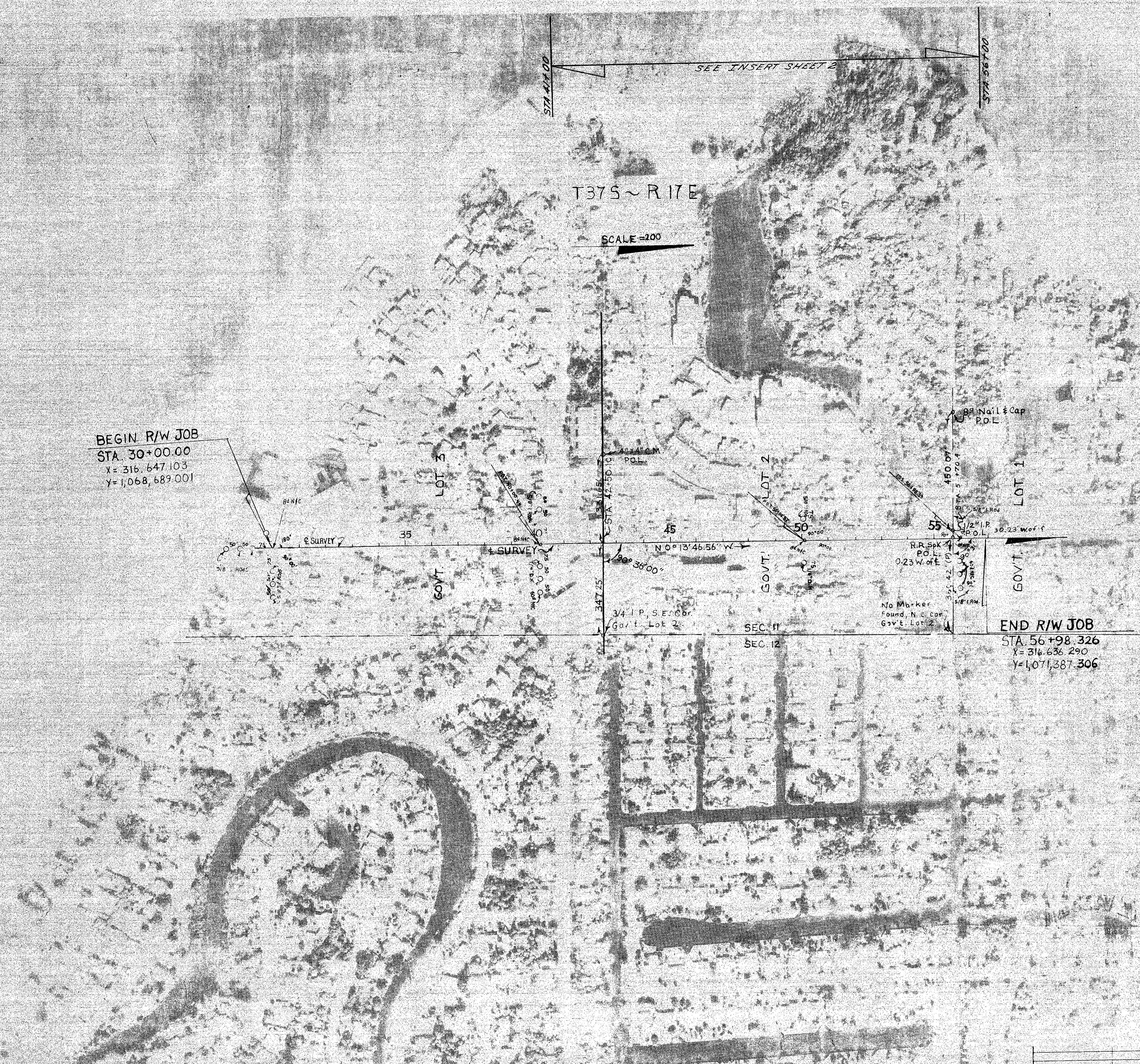


FED. ROAD DIST. NO.	STATE	F. A. PROJECT NO.	FISCAL YEAR	SHEET NO.
3	FLA.	17510-2603		1

BEGIN R/W JOB
 STA. 30+00.00
 X = 316,647.103
 Y = 1,068,689.001

END R/W JOB
 STA. 56+98.326
 X = 316,636.290
 Y = 1,071,387.306



UTILITY OWNERS
 POWER: Florida Power & Light Company
 TELEPHONE: General Telephone Company
 WATER: State Key Utility Authority, Inc.
 SAN SEWER: State Key Utility Authority, Inc.
 TV CABLE: Stower Cable T.V.

BEARING NOTE:
 Bearings are taken from Fla. Plane Coord. S. 73

KEY MAP
 OCEAN BLVD.
 BEACH ROAD NORTH TO TREASURE BOATWAY

(1) Indicates Plat Dimension

STATE OF FLORIDA DEPARTMENT OF TRANSPORTATION	
RIGHT OF WAY MAP	
STATE ROAD NO. S-789-A	SARASOTA COUNTY
DRAWN BY: R.B.D. DATE: 12-10-73	APPROVED BY: [Signature] DATE: 12/8/76
TRACED BY: TLD DATE: 1-24-79	CHECKED BY: C.U.K. DATE: 1-09-74
INDEXED	
REVISION	BY DATE
SECTION 17510-2603 SHEET 1 OF 2	

FED. ROAD DIV. NO.	STATE	F.A. PROJECT NO.	FISCAL YEAR	SHEET NO.
3	FLA.	17510-2603		

FILED FOR RECORD
MAY 3 9 35 AM '79

SEC. II
T 37.5 ~ R. 17E.

SCALE = 80'

REPLAT OF
WHISPERING SANDS CONDOMINIUM VILLAGE
SECTION ONE

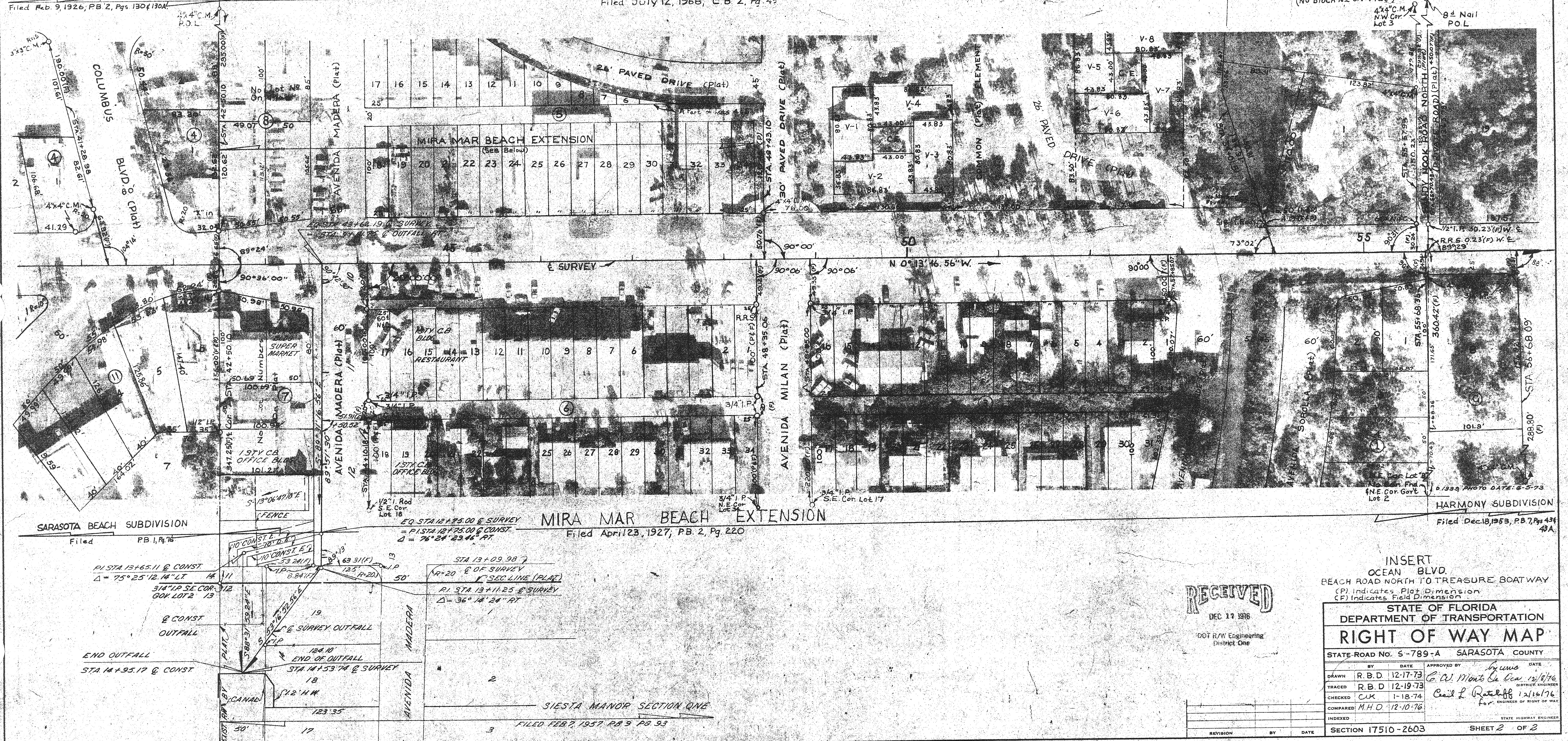
Filed July 12, 1968, C.B. 2, Pg. 45

MIRA MAR BEACH SUBDIVISION

Filed Feb. 9, 1926, P.B. 2, Pgs. 130 & 130A

SANDY HOOK SUBDIVISION

Filed Nov. 25, 1957, P.B. 10, P. 54
(No Block N2 on Plat)



RECEIVED
DEC 17 1976

DOT R/W Engineering
District One

INSERT
OCEAN BLVD.
BEACH ROAD NORTH TO TREASURE BOATWAY
(PI) Indicates Plot Dimension
(CF) Indicates Field Dimension

STATE OF FLORIDA
DEPARTMENT OF TRANSPORTATION
RIGHT OF WAY MAP

STATE ROAD NO. 5-789-A SARASOTA COUNTY

BY	DATE	APPROVED BY	DATE
R.B.D.	12-17-73	<i>C. W. Monte La Cruz</i>	12/17/76
TRACED	R.B.D.		12-19-73
CHECKED	C.K.	<i>Carl L. Rottloff</i>	1-18-74
COMPARED	M.H.D.		12-10-76
INDEXED			

SECTION 17510-2603 SHEET 2 OF 2

MIRA MAR BEACH EXTENSION
Filed April 23, 1927, P.B. 2, Pg. 220

SIESTA MANOR SECTION ONE
FILED FEB 7, 1957 P.B. 9 PG. 53

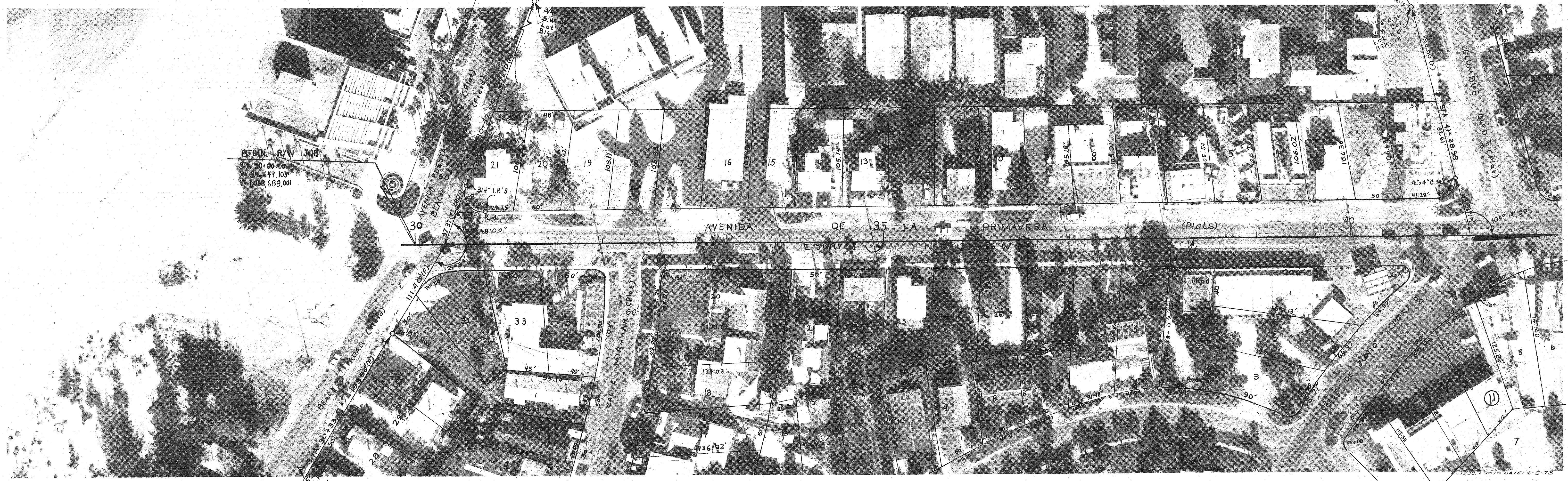
FED. ROAD DIV. No.	STATE	F A PROJECT NO.	FISCAL YEAR	SHEET No.
5	FLA.	17510-2603		2

(REFERENCE SHEET ONLY
Not Signed)

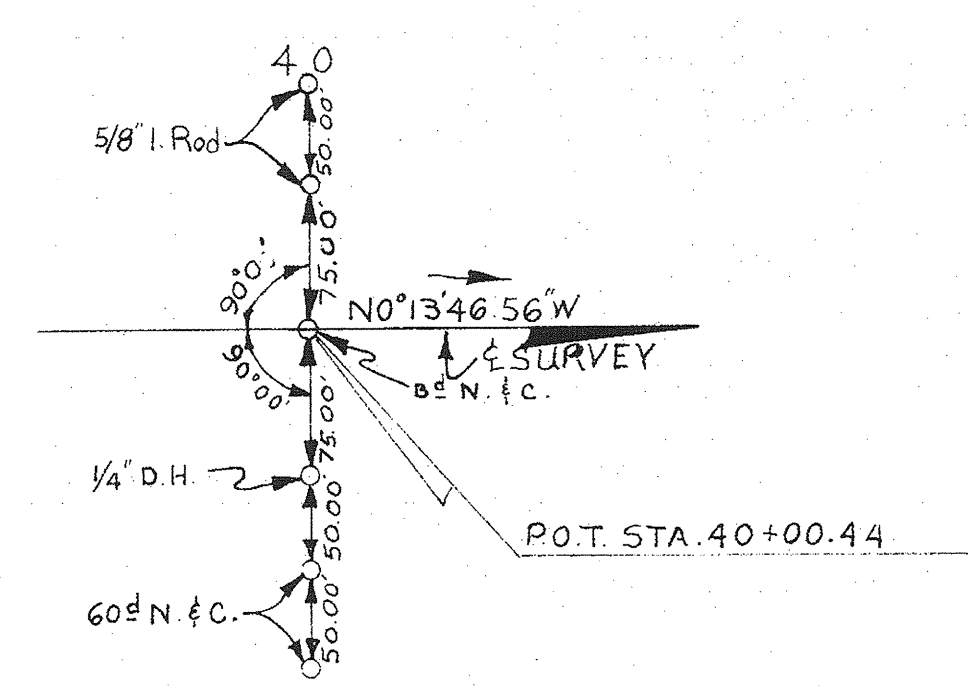
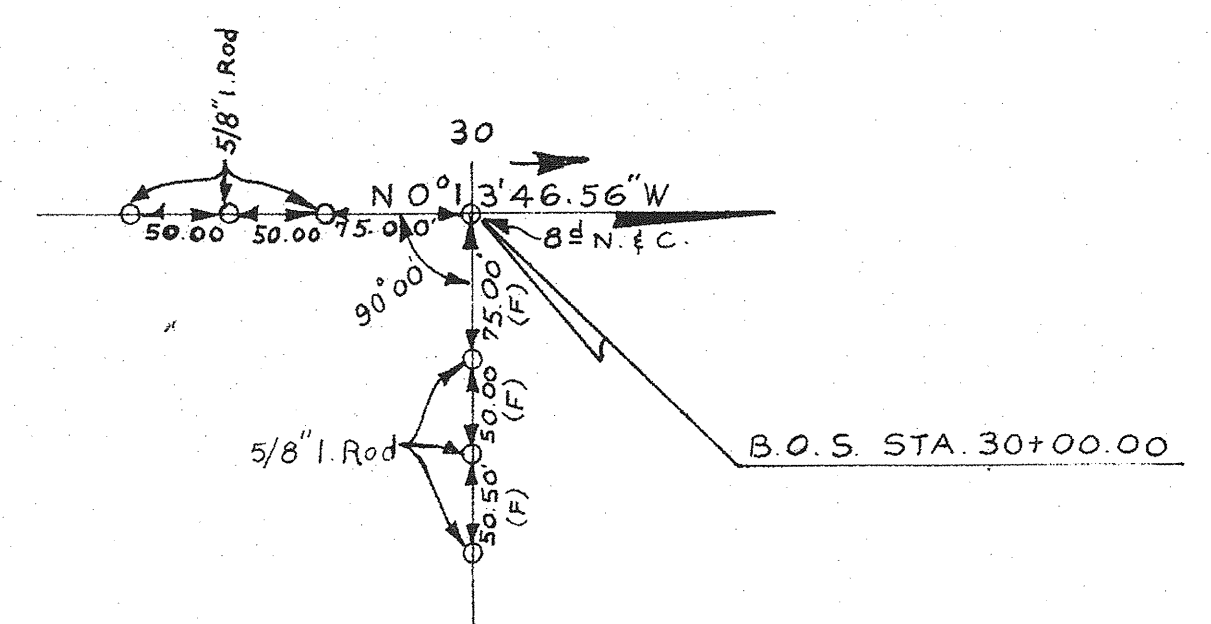
SEC. 11
T. 37 S ~ R. 17 E.

SCALE = 50'

MIRA MAR BEACH SUBDIVISION
Filed Feb 9, 1926; P.B. 2, Pgs. 130 & 130A.



SARASOTA BEACH SUBDIVISION
Filed P.B. 1, Pg. 76



INSERT
OCEAN BLYD.
BEACH ROAD NORTH TO TREASURE BOATWAY
(F) Indicates Field Dimension

STATE OF FLORIDA		DEPARTMENT OF TRANSPORTATION	
RIGHT OF WAY MAP			
STATE ROAD No. 5-789-A		SARASOTA COUNTY	
DRAWN	BY	DATE	APPROVED BY
TRACED	Y.L.D.	12-13-73	
CHECKED	EWK	1-15-74	
COMPARED			
INDEXED			
SECTION 17510-2603		SHEET 2 OF	

REVISION	BY	DATE

FED. ROAD DIV. NO.	STATE	F. A. PROJECT NO.	FISCAL YEAR	SHEET NO.
3	FLA.	17510-2603		4

(REFERENCE SHEET ONLY
Not Signed)

SEC. 11
T. 37 S. ~ R. 17 E.

SCALE = 50'

SANDY HOOK SUBDIVISION
Filed Nov. 25, 1957; P.B. 10, Pgs. 54 & 54A

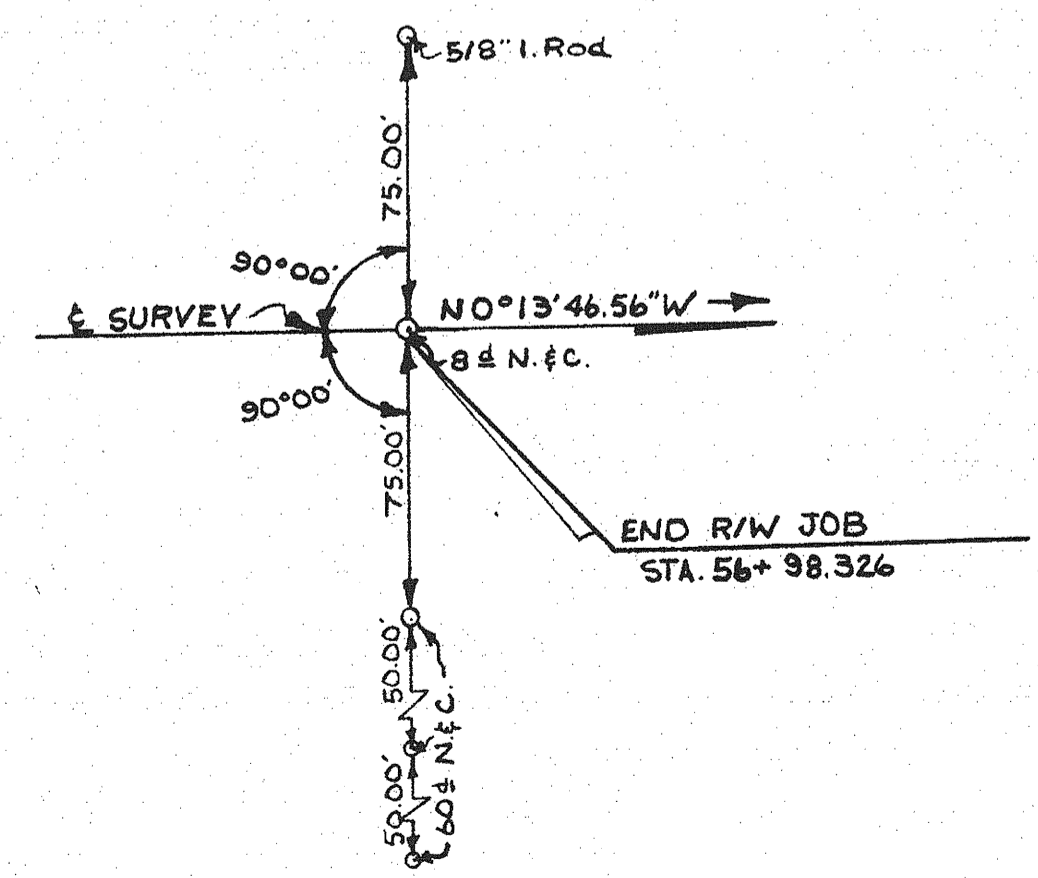
SANDY COVE A CONDOMINIUM
Filed C.B. 2, Pg. 20



4" x 4" C.M.
S.E. Cor. Lot 1

FD1333, PHOTO DATE: 8-5-73

HARMONY SUBDIVISION
Filed Dec 18 1953; PB. 7, Pgs. 43 & 43A.



INSERT
OCEAN BLVD.
BEACH ROAD NORTH TO TREASURE BOATWAY

(F) Indicates Field Dimension

STATE OF FLORIDA DEPARTMENT OF TRANSPORTATION			
RIGHT OF WAY MAP			
STATE ROAD No. 5-789-A SARASOTA COUNTY			
DRAWN	BY	DATE	APPROVED BY
TRACED	R.B.D.	12-19-73	
CHECKED	C.K.	1-21-74	
COMPARED			
INDEXED			
SECTION 17510-2603			SHEET 4 OF

REVISION	BY	DATE