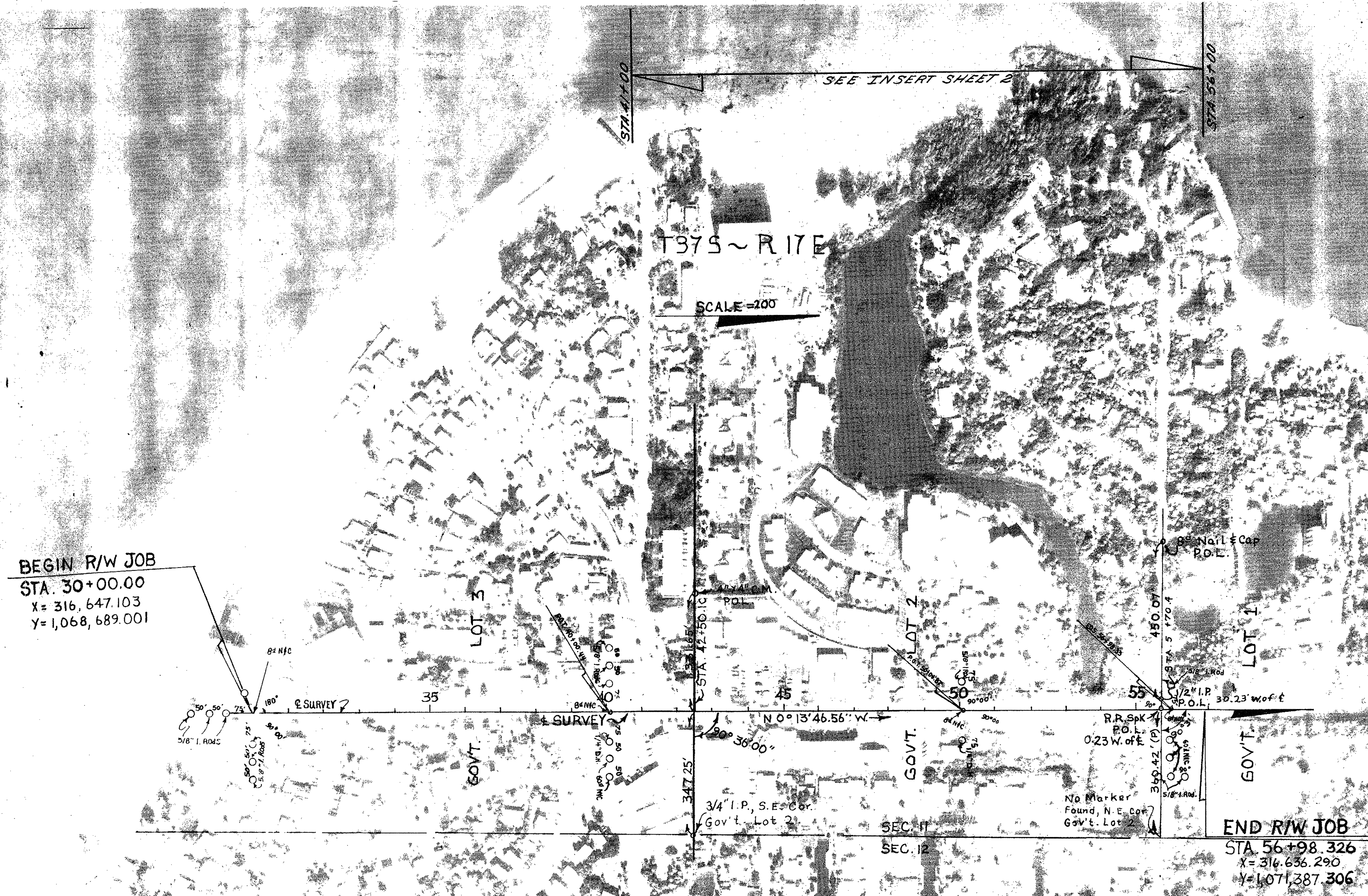


FED. ROAD DIST. No.	STATE	F.A. PROJECT NO.	FISCAL YEAR	SHEET No.
5	FLA.	17510-2603		1



"THE RIGHTS OF THIS MAP WHEN RECORDED IS AN INSTRUMENT OF TITLE CONVEYANCE TRANSFERRING IN ACCORDANCE WITH FLORIDA STATUTES 387.29 (1977) ALL RIGHTS, TITLE AND INTEREST OF THE FLORIDA DEPARTMENT OF TRANSPORTATION IN THE ROAD, STREET, HIGHWAY SET FORTH ON THIS MAP TO SARASOTA COUNTY."

RECORDED FOR PLAT RECORD IN SARASOTA COUNTY, FLORIDA, THIS 25 DAY OF June 1973 IN ROAD PLAT BOOK 2 PAGE 45, 45A

Shelby W. ...
 CLERK OF CIRCUIT COURT
 SARASOTA COUNTY, FLORIDA

BEARING NOTE:
 Bearings are taken from Fla. Plane Coord. System

KEY MAP
 OCEAN BLVD.
 BEACH ROAD NORTH TO TREASURE BOATWAY

NO. 1333, PHOTO DATE: 6-5-73
 (P) Indicates Plat Dimension

STATE OF FLORIDA DEPARTMENT OF TRANSPORTATION	
RIGHT OF WAY MAP	
STATE ROAD No. 5-789-A	SARASOTA COUNTY
BY: R.B.D. DATE: 12-10-73	APPROVED BY: <i>by name</i> DATE:
TRACED: T.L.D. 1-24-74	DATE OF: <i>12/8/76</i>
CHECKED: C.U.K. 1-09-74	BY: <i>Cecil L. Ratliff</i> 12/16/76
COMPARED:	FOR: ENGINEER OF RIGHT OF WAY
INDEXED:	STATE HIGHWAY ENGINEER
REVISION	BY DATE
SECTION 17510-2603 SHEET 1 OF 2	

FED. ROAD DIV. NO.	STATE	F.A. PROJECT NO.	FISCAL YEAR	SHEET NO.
3	FLA.	17510-2603		

SEC. II
T 37 S ~ R. 17 E.

SCALE = 50'

REPLAT OF
WHISPERING SANDS CONDOMINIUM VILLAGE
SECTION ONE

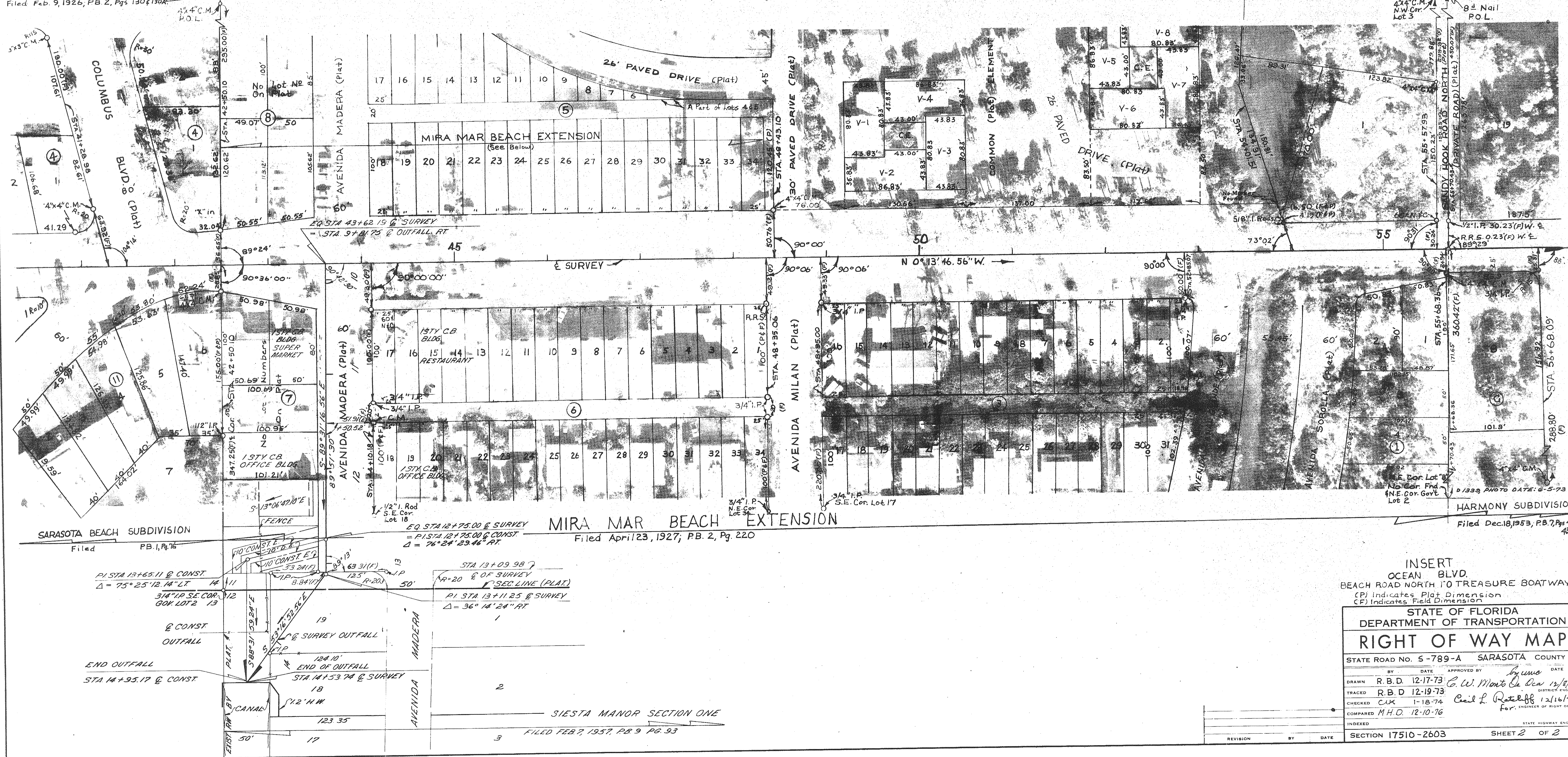
Filed July 12, 1968, C.B. 2, Pg. 45

MIRA MAR BEACH SUBDIVISION

Filed Feb. 9, 1926, P.B. 2, Pgs 130 & 130A

SANDY HOOK SUBDIVISION

Filed Nov. 25th 1957, P.B. 10, Pgs 54 & 54A
(No Block N2 on Plat)



INSERT
OCEAN BLVD.
BEACH ROAD NORTH TO TREASURE BOATWAY
(CPI) Indicates Plot Dimension
(CF) Indicates Field Dimension

STATE OF FLORIDA DEPARTMENT OF TRANSPORTATION	
RIGHT OF WAY MAP	
STATE ROAD NO. 5-789-A	SARASOTA COUNTY
BY	DATE
APPROVED BY	DATE
DRAWN	R.B.D. 12-17-73
TRACED	R.B.D. 12-19-73
CHECKED	C.W. 1-18-74
COMPARED	M.H.O. 12-10-76
INDEXED	
SECTION 17510-2603	SHEET 2 OF 2