

SCALE 1" = 50'

N 1/2 SEC. 1, TWP. 36 S, RGE. 17 E

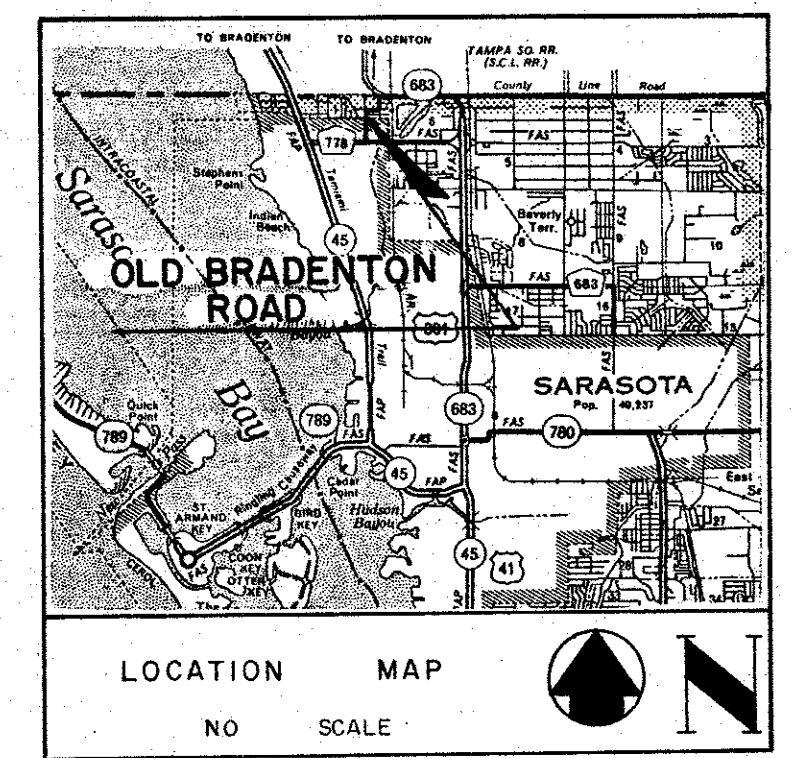
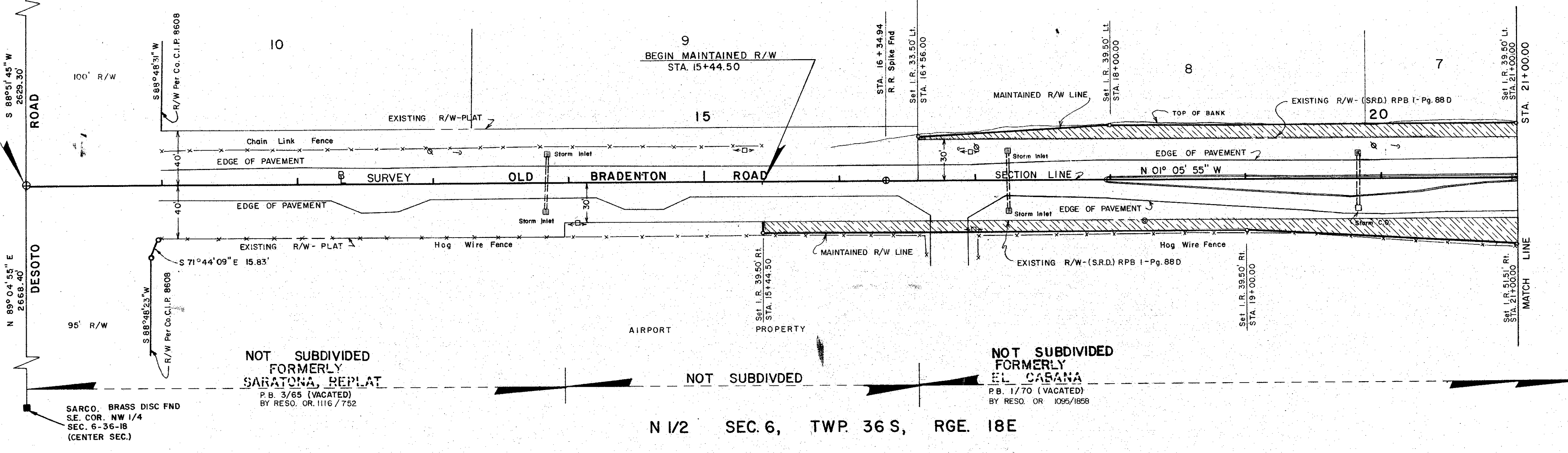
SARATONA, REPLAT BLKS. E-J
P.B. 3/61

STEHN & THEODORE SUB.
P.B. A/51

BEGIN SURVEY
STA. 10+00.00
R.R. Spike Fnd
S.E. COR. NE 1/4
SEC. 1-36-17

LEGEND

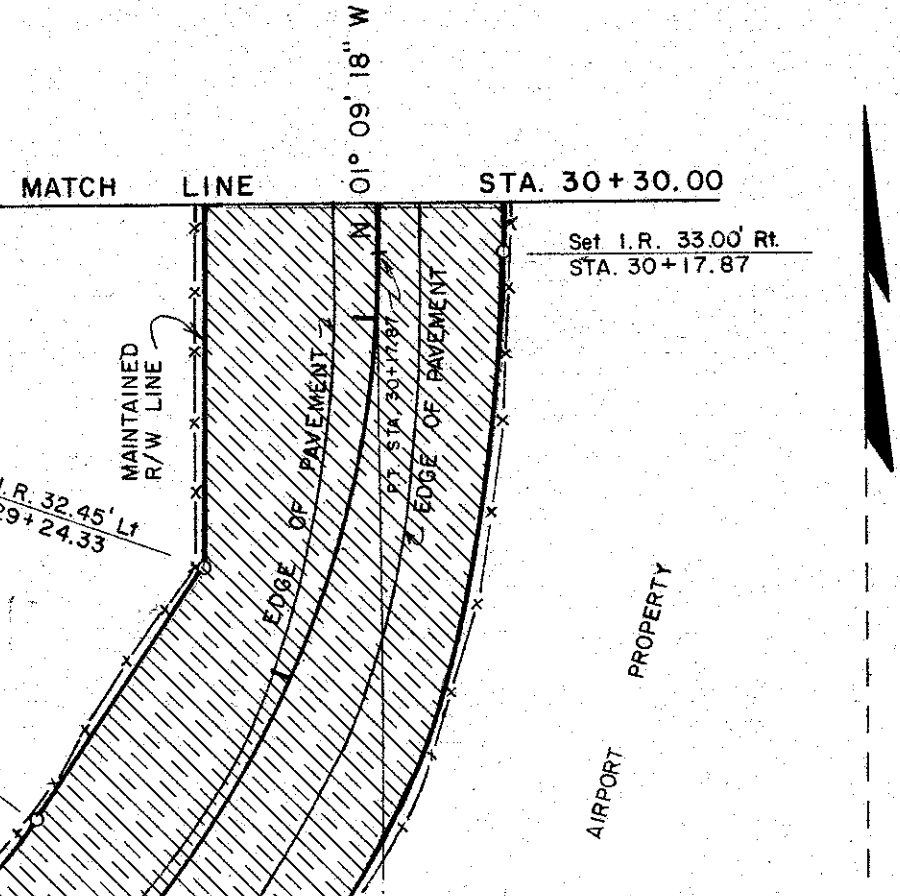
- = NAIL & DISK SET
- = NAIL & DISK FND
- = I.R. SET WITH RED CAP STAMPED COUNTY R/W P.L.S. 1867
- = I.R. FND.
- = R.R. SPIKE FND
- = DRILL HOLE SET
- △ = 1/2" HUB SET
- △ = 1/2" HUB FND.
- = CONC. MON. SET
- = CONC. MON. FND.
- = WATER VALVE
- = UTILITY POLE
- = G.T. & TV CABLE BOX
- = G.T. MANHOLE
- = LIGHT POLE
- = FIRE HYDRANT
- = GUY WIRE



LEGEND OF ABBREVIATIONS

- | | | | |
|--|---|--|--|
| AVE. = AVENUE | F.B. = FIELD BOOK | P.C. = POINT OF CURVATURE | SUB. = SUBDIVISION |
| BLK. = BLOCK | F.D.O.T. = FLORIDA DEPARTMENT OF TRANSPORTATION | PC. = PERMANENT CONTROL POINT | SW. = SOUTHWEST |
| BLVD. = BOULEVARD | FL. = FLORIDA | P.I. = POINT OF INTERSECTION | T. = TANGENT |
| B.M. = BENCH MARK | FND. = FOUND | P.L.S. = PROFESSIONAL LAND SURVEYOR | T.I.L.F. = TRUSTEES OF THE INTERNAL IMPROVEMENT FUND |
| B.T.O.B. = BACK TOP OF BANK | F.P. & L. = FLORIDA POWER AND LIGHT | P.R.C. = POINT OF REVERSE CURVE | T.O.B. = TOP OF BANK |
| C.B. = CONDOMINIUM BOOK | G.T.E. = GENERAL TELEPHONE ELECTRIC | P.R.M. = PERMANENT REFERENCE MONUMENT | T.W. = TOWNSHIP |
| C.C.C.L. = COASTAL CONSTRUCTION CONTROL LINE | I.P. = IRON PIPE | P.T. = POINT OF TANGENCY | U/E = UNDERGROUND ELECTRIC |
| CH. = CHORD | I.R. = IRON ROD | R. = RADIUS | U.S. = UNITED STATES |
| CH. BRG. = CHORD BEARING | L. = LENGTH | R.C.P. = REINFORCED CONCRETE PIPE | VEG. = VEGETATION |
| C. = CENTERLINE | M.H.W.L. = MEAN HIGH WATER LINE | R.D. = ROAD | W. = WEST |
| C.M. = CONCRETE MONUMENT | MON. = MONUMENT | REF. = REFERENCE | |
| C.M.P. = CORRUGATED METAL PIPE | M/R/W. = MAINTAINED RIGHT-OF-WAY | RESUB. = RESUBDIVISION | |
| CO. = COUNTY | N. = NORTH | R.P.B. = ROAD PLAT BOOK | |
| CONDO. = CONDOMINIUM | N. & D. = NAIL AND DISC | R.R. = RAILROAD | |
| CONST. = CONSTRUCTION | NE. = NORTH EAST | R.T. = RIGHT | |
| COR. = CORNER | N.G.V.D. = NATIONAL GEODETTIC VERTICAL DATUM | R/W. = RIGHT-OF-WAY | |
| D.B. = DEED BOOK | N.O.S. = NATIONAL OCEAN SERVICE | S. = SOUTH | |
| D.N.R. = DEPARTMENT OF NATURAL RESOURCES | N.W. = NORTHWEST | SE. = SOUTHEAST | |
| D.O.T. = DEPARTMENT OF TRANSPORTATION | O.A. = OVER ALL | SEC. = SECTION | |
| DR. = DRIVE | O/E. = OVERHEAD ELECTRIC | S.F.D.D. = SARASOTA-FRUITVILLE DRAINAGE DISTRICT | |
| DRAIN. = DRAINAGE | O.R.B. = OFFICIAL RECORDS BOOK | SR. = STATE ROAD | |
| E. = EAST | O.T. = ORDER OF TAKING | ST. = STREET | |
| EASE. = EASEMENT | P.B. = PLAT BOOK | STA. = STATION | |
| EP. = EDGE OF PAVEMENT | | | |
| F.A.C.J. = FLORIDA ADMINISTRATION CODE | | | |

Curve Data
R = 271.35'
Δ = 90° 45' 53"
L = 429.86'
T = 275.00'
PC. STA. 25+17.87
PT. STA. 30+17.87



SURVEYOR'S NOTES

- BEARINGS ARE BASED ON THE BRADENTON RD. S.R.D. R/W MAP S.R. NO. 683-A, SECTION 17120-2150 FILED IN ROAD PLAT BOOK 1 AT PAGE 88D, WEST LINE SEC. 6-36-18 BEING N 01° 05' 55" W.
- A CHANGE OR JOG ON THE MAINTAINED RIGHT-OF-WAY LINE IS NOT NECESSARILY LOCATED AT AN INTERSECTING PROPERTY LINE.
- ALL UNDERGROUND FACILITIES NOT LOCATED.

THIS IS TO CERTIFY THAT THE NUMBERED SHEETS TWO(2) OF TWO(2) CONSTITUTE THE OFFICIAL MAINTENANCE MAP SHOWING THE LOCATION AND SURVEY BY THE SARASOTA COUNTY, FLORIDA, TRANSPORTATION DEPARTMENT FOR OLD BRADENTON ROAD LYING BETWEEN DESOTO ROAD AND UNIVERSITY PARKWAY IN SECTIONS 1 AND 6, TOWNSHIP 36 S, RANGE 18 E, SARASOTA COUNTY, FLORIDA, PURSUANT TO THE PROVISIONS OF CHAPTER 95.361, FLORIDA STATUTES OF 1991.

ACCEPTED FOR FILE AND RECORDED IN THE PUBLIC RECORDS OF SARASOTA COUNTY, FLORIDA THIS 7 DAY OF Aug. A. D. 1992 IN ROAD PLAT BOOK PAGE 44-444

Paul Kopitzke
CLERK OF THE CIRCUIT COURT
SARASOTA COUNTY, FLORIDA

THIS IS TO CERTIFY THAT THE LIMITS OF THE ROADWAY OUTSIDE OF PLATTED RIGHT-OF-WAY AS SHOWN CROSS-HATCHED HEREON, HAS BEEN MAINTAINED CONTINUOUSLY FOR OVER FOUR (4) YEARS WITHOUT INTERRUPTION.

Paul Kopitzke 2-18-92
PAUL KOPITZKE
AREA SUPERINTENDENT
HIGHWAY MAINTENANCE DIVISION

THIS IS TO CERTIFY THAT THIS MAINTENANCE MAP WAS APPROVED BY RESOLUTION NO. 892-176 PASSED AND ADOPTED BY THE BOARD OF COUNTY COMMISSIONERS OF SARASOTA COUNTY, FLORIDA ON THE 21 DAY OF July A. D., 1992.

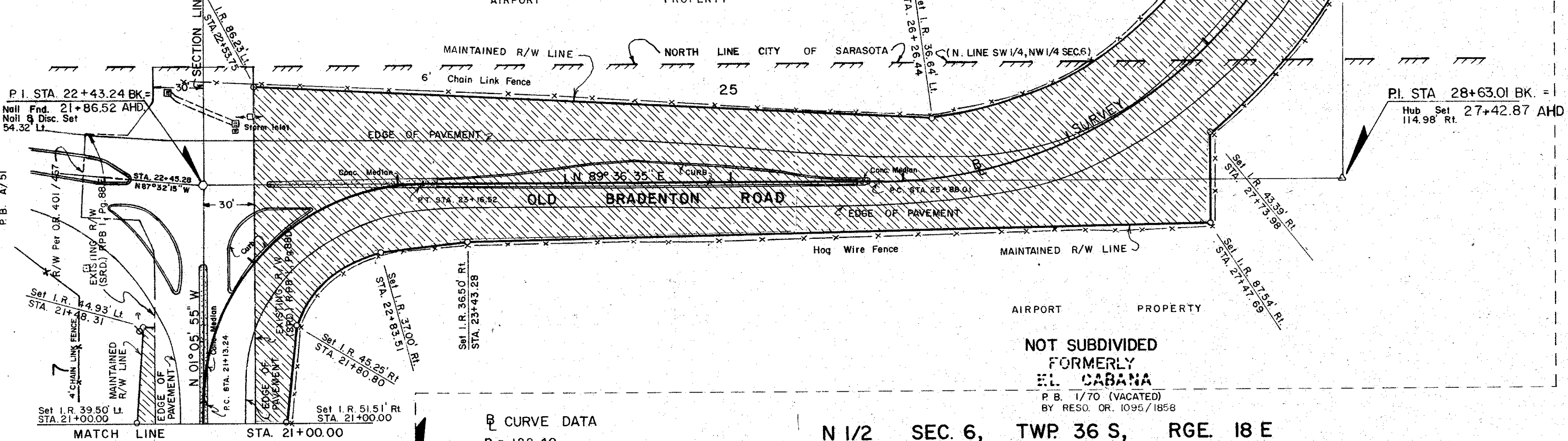
BOARD OF COUNTY COMMISSIONERS OF SARASOTA COUNTY, FLORIDA BY:

Paul Kopitzke
CHAIRMAN

ATTEST:
KAREN E. RUSHING, CLERK OF THE CIRCUIT COURT AND EX-OFFICIO CLERK OF THE BOARD OF COUNTY COMMISSIONERS OF SARASOTA COUNTY, FLORIDA BY:

Frances Daniel
DEPUTY CLERK

N 1/2 SEC. 1, TWP. 36 S, RGE. 17 E



Curve Data
R = 128.40'
Δ = 90° 42' 30"
L = 203.28'
T = 130.00'
PC. STA. 21+13.24
PT. STA. 23+16.52

N 1/2 SEC. 6, TWP. 36 S, RGE. 18 E

SURVEYOR'S CERTIFICATE

I HEREBY CERTIFY THAT THIS MAINTAINED R/W MAP (SHEET 1-2) REPRESENTS A SURVEY OF THE ROAD ALIGNMENT AS SHOWN HEREON THAT THE SURVEY WAS RECENTLY PERFORMED UNDER MY DIRECTION THAT IT IS TRUE AND CORRECT TO THE BEST OF MY KNOWLEDGE AND BELIEF AND THAT THE SURVEY MEETS THE MINIMUM TECHNICAL STANDARDS AS SET FORTH BY THE FLORIDA BOARD OF PROFESSIONAL LAND SURVEYORS IN CH 21HH-6, F.A.C. PURSUANT TO SECTION 472.027, F.S.

DATE OF SURVEY: 4/12/82

E.R. Emerson
E.R. EMERSON, COUNTY SURVEYOR
PROFESSIONAL LAND SURVEYOR NO. 1867
STATE OF FLORIDA
1301 CATTLEMAN ROAD
SARASOTA, FLORIDA 34232-9631

DATE	REVISIONS

SARASOTA COUNTY TRANSPORTATION DEPARTMENT
ENGINEERING DIVISION, CADASTRAL SECTION

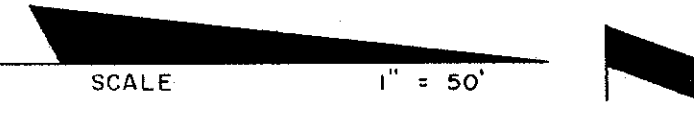
MAINTAINED RIGHT OF WAY MAP

OLD BRADENTON ROAD
DESOTO ROAD TO COUNTY LINE

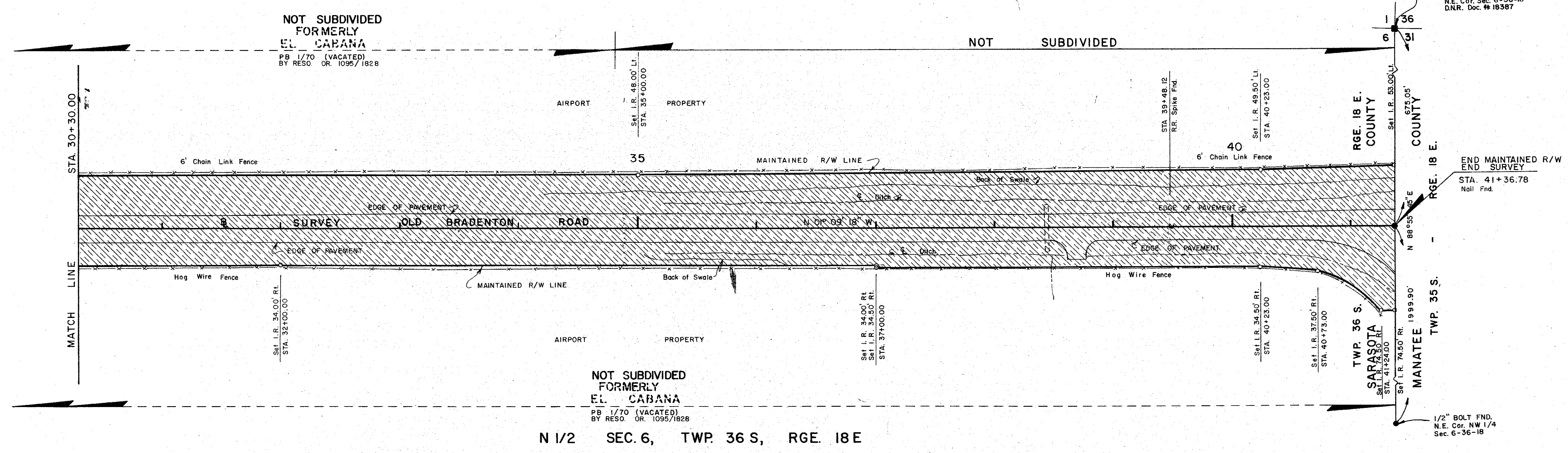
DRAWN	BY	DATE	
	W.F.W.	10/13/88	
CHECKED	BY	DATE	
	B.Y.	3/13/92	
COMPARED	BY	DATE	
	K.C.W.	2-14-92	
REF. F.B. 138, PG. 145	RIGHT OF WAY	DATE	
F.B. 261, 19-32	TRANSPORTATION DIRECTOR	DATE	

SCALE 1" = 50' PROJECT NO. 82024 SHEET 1 OF 2

RCC RESO 892-176 ORR 2410 PG 2407



N 1/2 SEC. 6, TWP. 36 S, RGE. 18 E



LEGEND

- = NAIL B DISK SET
- = NAIL B. DISK FND.
- = I.R. SET WITH RED CAP STAMPED COUNTY R/W PLS. 1867
- = I.R. FND.
- ⊕ = R.R. SPIKE FND.
- ⊙ = DRILL HOLE SET
- △ = 1"x2" HUB SET
- ▲ = 1"x2" HUB FND.
- = CONC. MON. SET
- = CONC. MON. FND.
- ⊠ = WATER VALVE
- ⊞ = UTILITY POLE
- ⊞ = G.T. & TV. CABLE BOX
- ⊞ = G.T. MANHOLE
- ⊞ = LIGHT POLE
- ⊞ = FIRE HYDRANT
- ⊞ = GUY WIRE

SARASOTA COUNTY TRANSPORTATION DEPARTMENT			
ENGINEERING DIVISION, CADASTRAL SECTION			
MAINTAINED RIGHT OF WAY MAP			
OLD BRADENTON ROAD DESOTO ROAD TO COUNTY LINE			
BY	DATE	SURVEY	
W.F.W.	10/13/88	DATE 58-92	
CHECKED	B.Y.	3/13/92	DATE 6-22-92
COMPARED	R.G.W.	2-14-92	DATE 6-29-92
REF.	F.B. 138, PG. 145	TRANSPORTATION DIRECTOR	
	F.B. 261, PG. 19-32	DATE	
SCALE	1" = 50'	PROJECT NO.	82024
		SHEET 2 OF 2	