

THIS IS TO CERTIFY THAT THE NUMBERED SHEETS ONE (1) THROUGH FOUR (4) CONSTITUTE THE OFFICIAL MAINTENANCE MAP SHOWING THE LOCATION AND SURVEY BY THE SARASOTA COUNTY, FLORIDA, TRANSPORTATION DEPARTMENT FOR OLD ENGLEWOOD ROAD LYING BETWEEN DEARBORN STREET AND STATE ROAD 775 IN SECTIONS 23, 24 AND 25, TOWNSHIP 40 S, RANGE 19 E, SARASOTA COUNTY, FLORIDA. THE PROPERTY SHOWN CROSS-HATCHED ON THIS MAP HAS BEEN VESTED IN SARASOTA COUNTY, FLORIDA, PURSUANT TO THE PROVISIONS OF CHAPTER 95.361, FLORIDA STATUTES OF 1983.

ACCEPTED FOR FILES AND RECORDED IN THE PUBLIC RECORDS OF SARASOTA COUNTY, FLORIDA THIS 26 DAY OF SEPT. A. D. 1985, IN ROAD PLAT BOOK 2 PAGES 63-65.

J. J. Satch Deputy Clerk
CLERK OF THE CIRCUIT COURT
SARASOTA COUNTY, FLORIDA

THIS IS TO CERTIFY THAT THIS MAINTENANCE MAP WAS APPROVED BY RESOLUTION NO. 285-387 PASSED AND ADOPTED BY THE BOARD OF COUNTY COMMISSIONERS OF SARASOTA COUNTY, FLORIDA, ON THE 24 DAY OF SEPT. A. D., 1985.

BOARD OF COUNTY COMMISSIONERS OF SARASOTA COUNTY, FLORIDA BY:

Jeanne M. Smurray
CHAIRMAN

W. H. HACKNEY JR. CLERK OF THE CIRCUIT COURT AND EX-OFFICIO CLERK OF THE BOARD OF COUNTY COMMISSIONERS OF SARASOTA COUNTY, FLORIDA BY:

Susan Kay Slidell
DEPUTY CLERK

THIS IS TO CERTIFY THAT THE LIMITS OF THE ROADWAY OUTSIDE OF THE PLATTED RIGHT-OF-WAY AS SHOWN CROSS-HATCHED HEREON, HAS BEEN MAINTAINED CONTINUOUSLY FOR OVER FOUR (4) YEARS WITHOUT INTERRUPTION.

Richard J. Christman
SUPERINTENDENT
ROAD & BRIDGE DIVISION

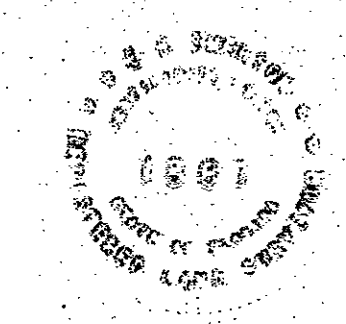
SURVEYOR'S CERTIFICATE

I HEREBY CERTIFY THAT THIS MAINTAINED R/W MAP REPRESENTS A BOUNDARY SURVEY OF THE ROAD AS SHOWN, THAT THE SURVEY WAS RECENTLY PERFORMED UNDER MY DIRECTION, AND THAT IT IS TRUE AND CORRECT TO THE BEST OF MY KNOWLEDGE AND BELIEF, AND THAT IT MEETS THE MINIMUM TECHNICAL STANDARDS FOR LAND SURVEYING IN THE STATE OF FLORIDA (CH. 211H-6, F.A.C. EFFECTIVE SEPT. 1, 1981)

DATE OF SURVEY: 8/27/85

E.R. Emerson
E.R. EMERSON, COUNTY SURVEYOR
PROFESSIONAL LAND SURVEYOR NO. 167
STATE OF FLORIDA
1301 CATTLEMEN ROAD
SARASOTA, FLORIDA 33582

28 Aug 85
DATE



BEARINGS
BEARINGS ARE BASED ON F.D.O.T. R/W MAP SECTION NO. 1705-107 PER ROAD PLAT BOOK NO. 1, PAGE 83 E. BEING N57°00'15" W.

LEGEND
O (L.P.) = IRON PIN WITH RED CAP MARKED COUNTY R/W SET ON MAINTAINED R/W LINE.

SARASOTA COUNTY TRANSPORTATION DEPARTMENT
ENGINEERING DIVISION, CADASTRAL SECTION

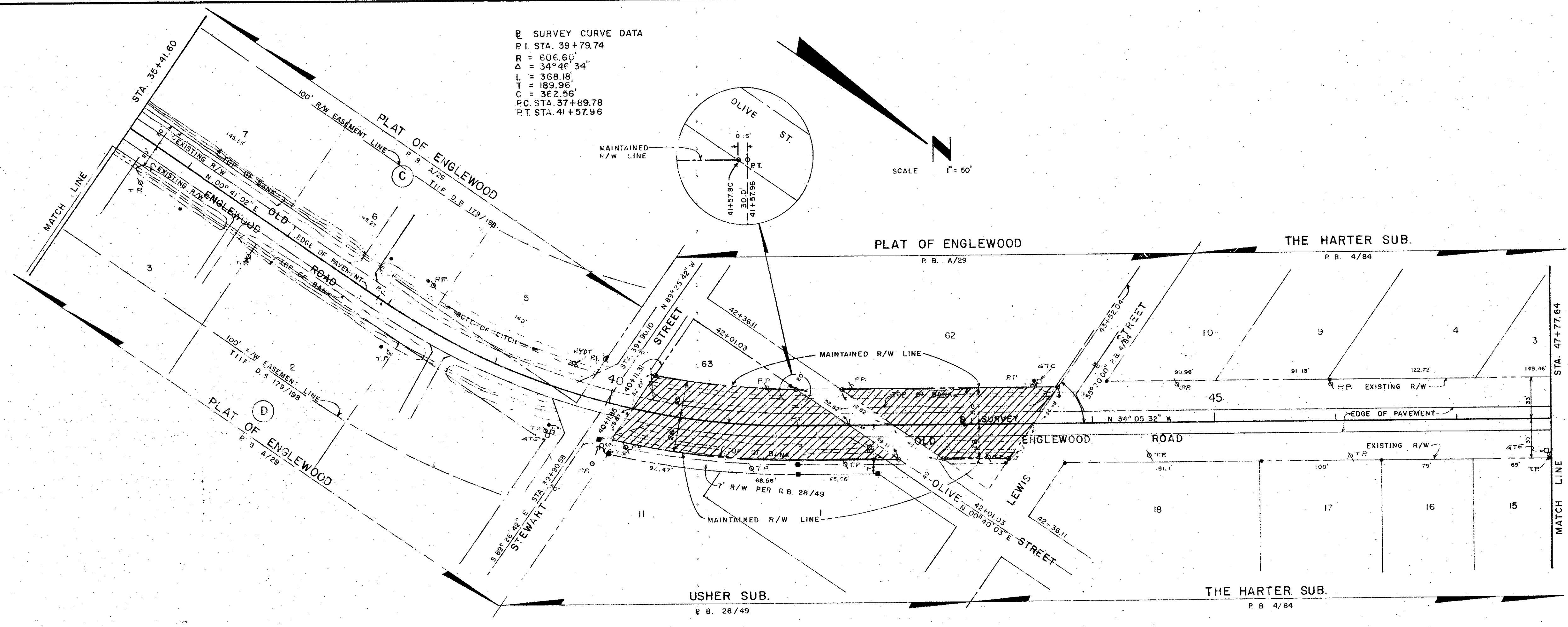
MAINTAINED RIGHT OF WAY MAP

OLD ENGLEWOOD ROAD
DEARBORN ST TO STATE ROAD 775

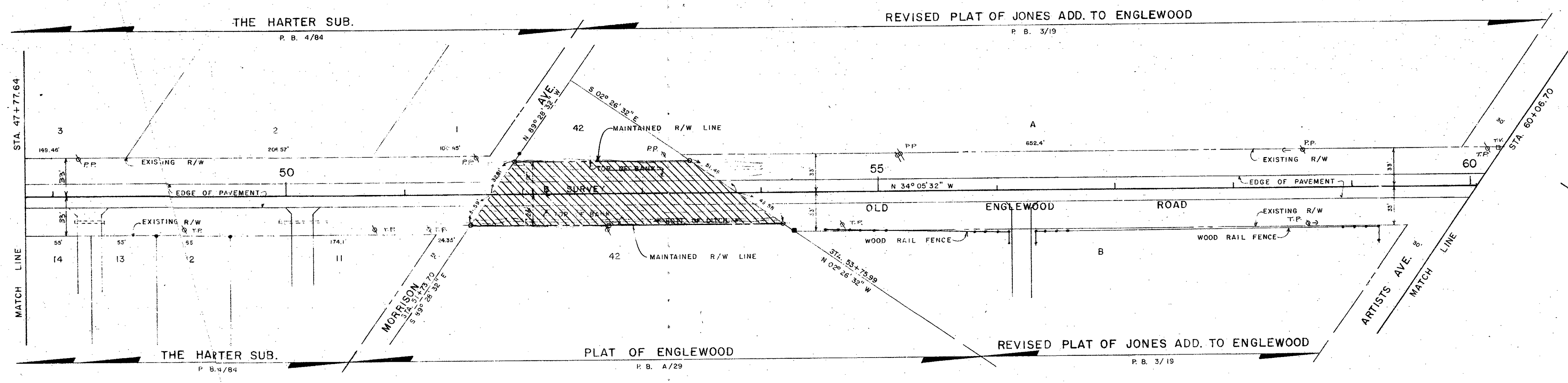
BY	DATE	
J.D.B.	8/27/85	SURVEY
G.M.F.	8/29/85	CHECKED
P.F.L.	8/28/85	COMPARED
F.B. 290, 782 19-59 INCL.		REF.
1" = 50'		SCALE

PROJECT NO. 8434

SHEET 1 OF 4

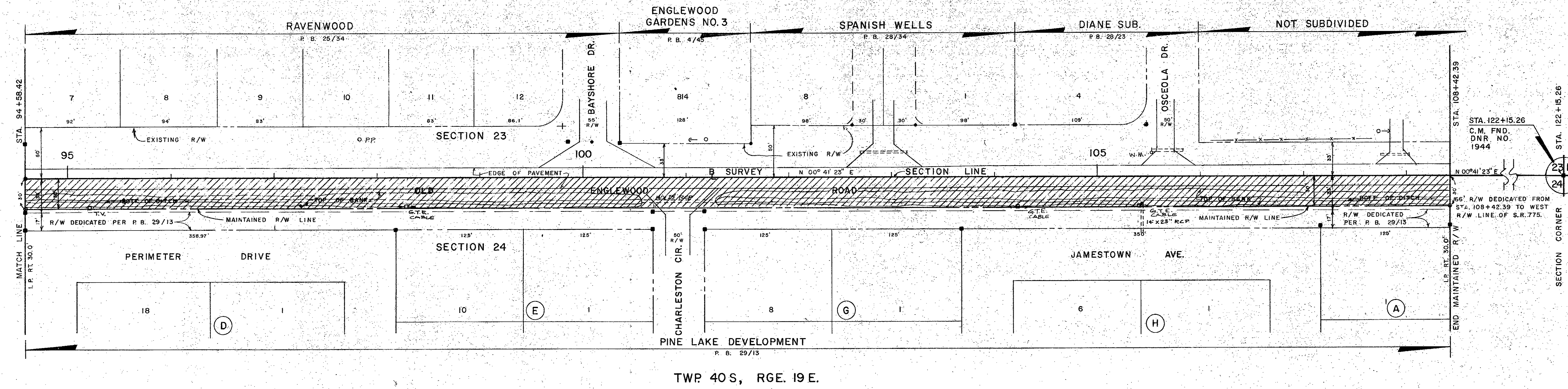
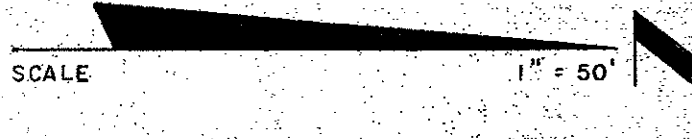
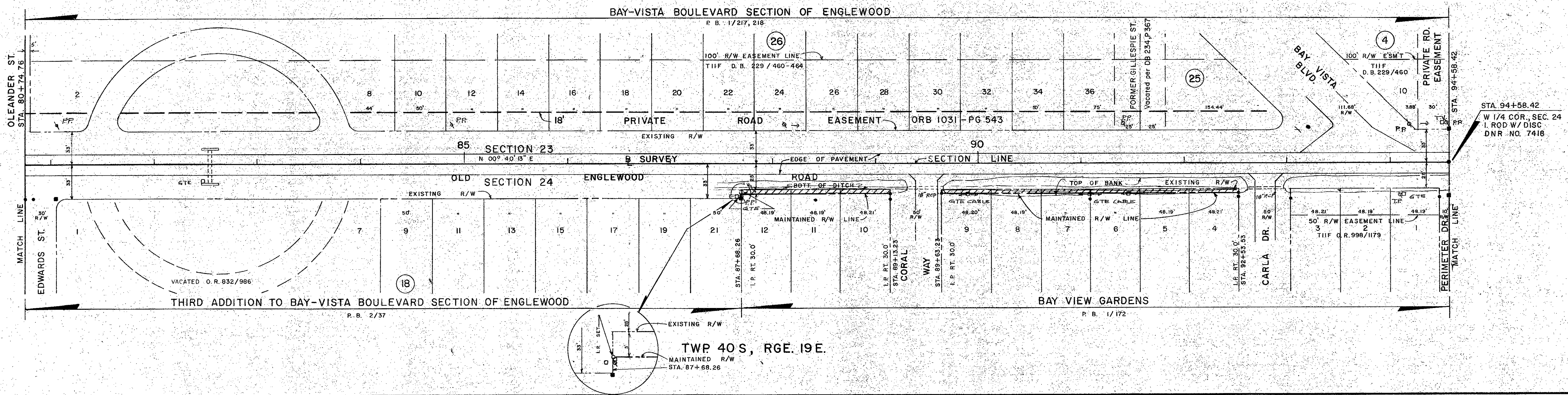
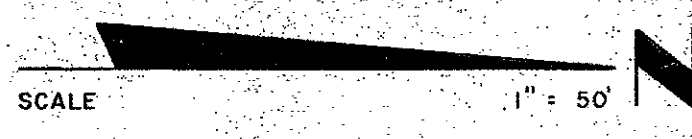


SEC. 25, TWP. 40 S, RGE. 19 E.



SEC. 25, TWP. 40 S, RGE. 19 E.

SARASOTA COUNTY TRANSPORTATION DEPARTMENT ENGINEERING DIVISION, CADASTRAL SECTION			
MAINTAINED RIGHT OF WAY MAP			
OLD ENGLEWOOD ROAD DEARBORN ST TO STATE ROAD 775			
DRAWN	BY	DATE	SURVEY
	J. D. B.	8/27/85	20 Aug 85
CHECKED	G.M.E.	8/28/85	9-13-85
COMPARED	P.F.L.	8/28/85	9-13-85
REF. E.B. 290, Pgs 17-59 INCL.	TRANSPORTATION DIRECTOR		DATE
SCALE	1" = 50'	PROJECT NO.	8434
			SHEET 2 OF 4



SARASOTA COUNTY TRANSPORTATION DEPARTMENT ENGINEERING DIVISION, CADASTRAL SECTION			
MAINTAINED RIGHT OF WAY MAP			
OLD ENGLEWOOD ROAD DEARBORN ST. TO STATE ROAD 775			
BY	DATE	DATE	
J.D.B.	8/27/85	BY	28 Aug 85
CHECKED	8/28/85	DATE	9-13-85
COMPARED	8/28/85	DATE	9-13-85
REF	F.B. 290, Pgs 17-59 INCL.	TRANSPORTATION DIRECTOR	DATE
SCALE	1" = 50'	PROJECT NO.	8434
			SHEET 4 OF 4