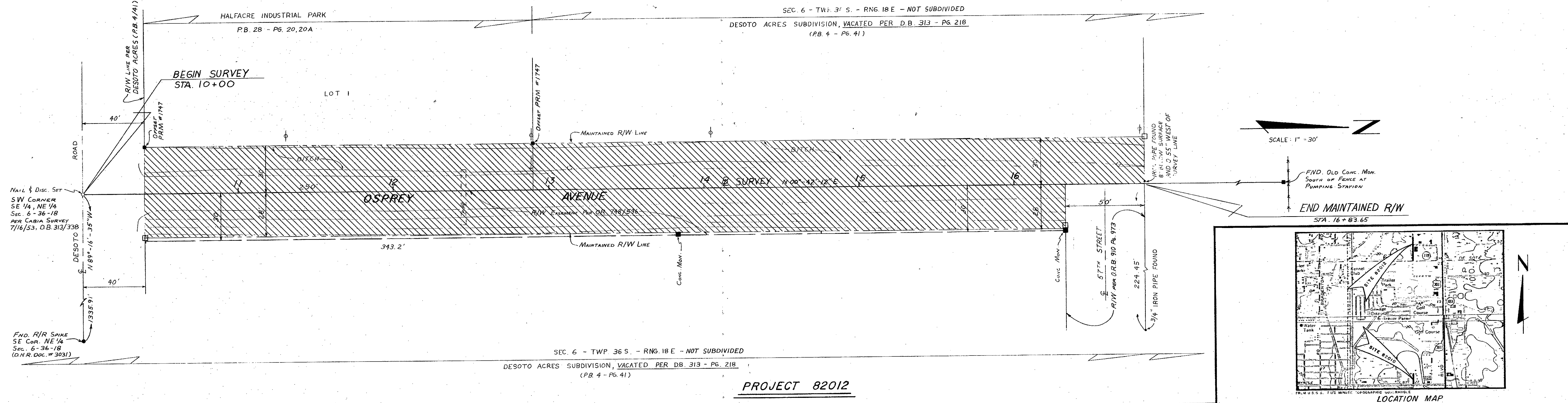


PROJECT 82010



PROJECT 82012

THIS IS TO CERTIFY THAT THIS MAP NUMBERED SHEETS ONE(1) OF ONE(1) CONSTITUTES THE OFFICIAL MAINTENANCE MAP SHOWING LOCATION AND SURVEY BY SARASOTA COUNTY, FLORIDA, TRANSPORTATION DEPARTMENT FOR PORTIONS OF OSPREY AVENUE, LYING WITHIN 563 FEET NORTH OF THE CENTER LINE OF MYRTLE STREET AND LYING WITHIN 684 FEET NORTH OF THE CENTER LINE OF DESOTO ROAD, IN SECTIONS 7 AND 6 RESPECTIVELY, TOWNSHIP 36 SOUTH, RANGE 18 EAST, SARASOTA COUNTY, FLORIDA. THE PROPERTY SHADED ON THIS MAP HAS BEEN VESTED IN SARASOTA COUNTY, FLORIDA, PURSUANT TO THE PROVISIONS OF CHAPTER 95.361, FLORIDA STATUTES OF 1981.

THIS IS TO CERTIFY THAT THIS MAINTENANCE MAP WAS APPROVED BY RESOLUTION NO. 82-17, PASSED AND ADOPTED BY THE BOARD OF COUNTY COMMISSIONERS OF SARASOTA COUNTY, FLORIDA, ON THE 18th DAY OF May, A.D. 1982.

BOARD OF COUNTY COMMISSIONERS OF SARASOTA COUNTY, FLORIDA
BY: *Walter A. ...*
CHAIRMAN

ATTEST:
R.H. HACKNEY JR., CLERK OF THE CIRCUIT COURT AND EX-OFFICIO CLERK OF THE BOARD OF COUNTY COMMISSIONERS OF SARASOTA COUNTY, FLORIDA
BY: *Walter A. ...*
DEPUTY CLERK

THIS IS TO CERTIFY THAT THE LIMITS OF THE ROADWAY OUTSIDE OF PLATTED RIGHT-OF-WAY AS SHOWN SHADED HEREON, HAS BEEN MAINTAINED CONTINUOUSLY FOR OVER FOUR (4) YEARS WITHOUT INTERRUPTION.

Walter A. ...
SUPERINTENDENT
ROAD AND BRIDGE DIVISION

SURVEYOR'S CERTIFICATE

I HEREBY CERTIFY THAT THIS MAINTAINED R/W MAP REPRESENTS A BOUNDARY SURVEY OF THE ROAD AS SHOWN, THAT THE SURVEY WAS RECENTLY PERFORMED UNDER MY DIRECTION, AND THAT IT IS TRUE AND CORRECT TO THE BEST OF MY KNOWLEDGE AND BELIEF, AND THAT IT MEETS THE MINIMUM TECHNICAL STANDARDS FOR LAND SURVEYING IN THE STATE OF FLORIDA (CH. 21 HH-6, F.A.C.) EFFECTIVE SEPT. 1, 1981.

E.R. EMERSON
PROFESSIONAL LAND SURVEYOR
STATE OF FLORIDA

DATE
NO. 1867

LEGEND

- TELEPHONE POLE
- POWER POLE
- MANNHOLE
- GUY ANCHOR
- CONC. MON., SURVEY MARKER FOUND
- IRON PIPE, SURVEY MARKER FOUND
- MAINT. R/W MON. SET

NOTES

1. Bearings shown based on D.O.T. R/W MAP, R.P.B. 1, PG. 116, for SR 683 (US-301) Sec. 17/20-25/03, Survey Centerline 100+51.83 to 115+04.55 being N 0° 21' 27.02" E.

ACCEPTED FOR FILES AND RECORDED IN THE PUBLIC RECORDS OF SARASOTA COUNTY, FLORIDA THIS 19th DAY OF May, A.D. 1982, IN ROAD PLAT BOOK 2 PAGE 29

CLERK OF THE CIRCUIT COURT
SARASOTA COUNTY, FLORIDA

SARASOTA COUNTY TRANSPORTATION DEPARTMENT
ENGINEERING DIVISION, CADASTRAL SECTION

MAINTAINED
RIGHT OF WAY MAP

OSPREY AVENUE
Myrtle St. - 560± North and Desoto Rd. - 700± North

BY	DATE	REVISION
BY	DATE	
CHECKED	DATE	
COMPARED	DATE	
REF: FB 256 pg. 69-73 & FB 267 pg. 72-73		
SCALE	PROJECT NO.	
1" = 30'	82010 & 82012	
SHEET	OF	
1	1	

D.C. 194 C.R. 151 B (1981)