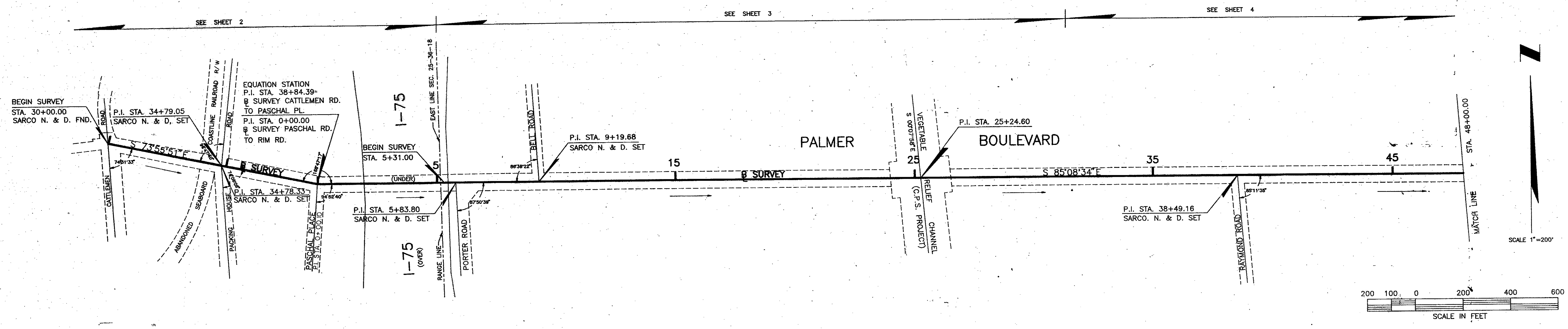


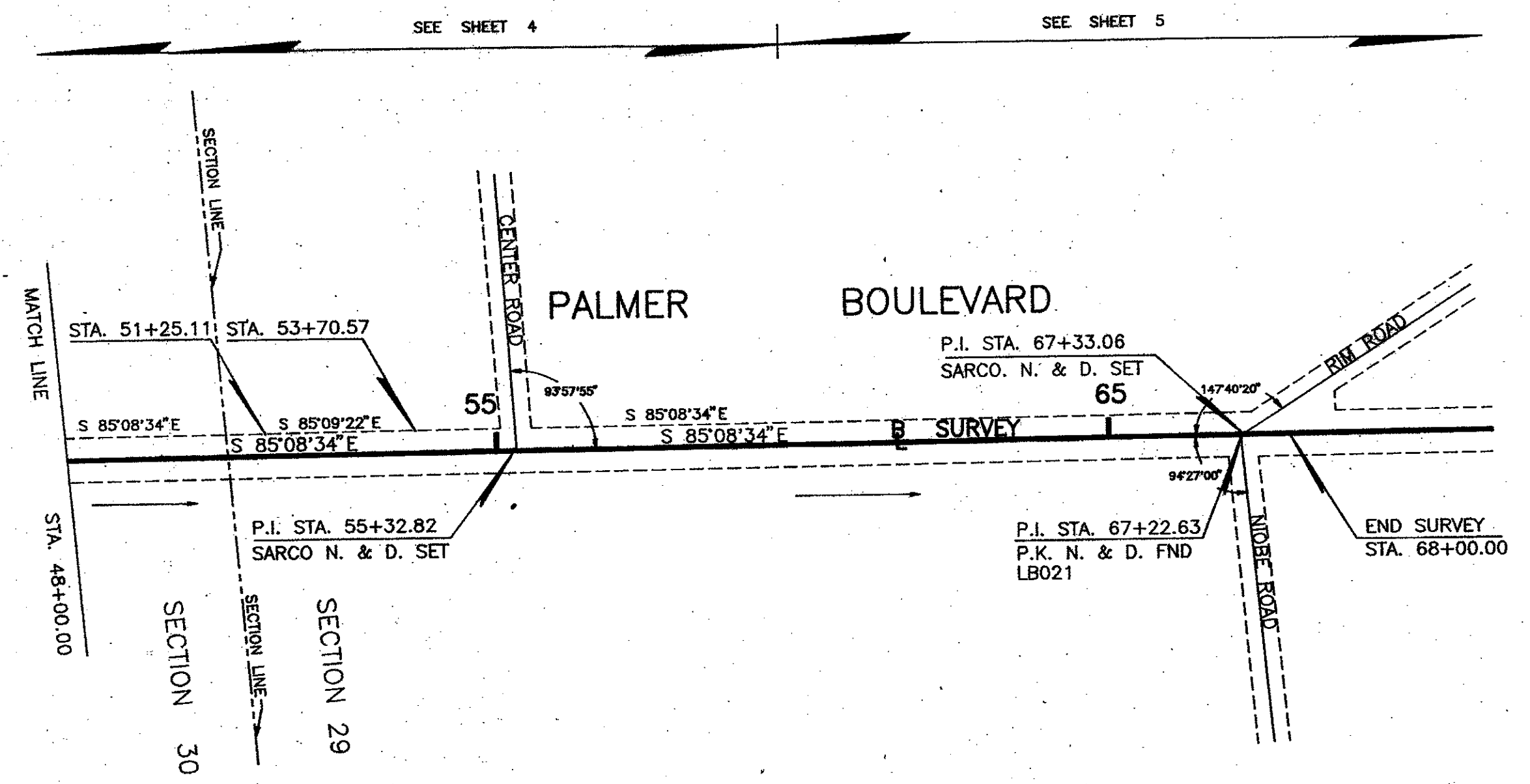
SECTION 25, TWP. 36 S., RNG. 18 E.

SECTION 30, TWP. 36 S., RNG., 19 E.



SECTION 30
TWP. 36 S., RNG. 19 E.

SECTION 29, TWP. 36 S., RNG. 19 E.



FILED FOR RECORD
1999 DEC 14 AM 7:50
KAREN E. RUSHING
CLERK OF CIRCUIT COURT
SARASOTA COUNTY, FL

FILE FOR RECORD IN ROAD PLAT BOOK 44 AT PAGES 24-25 OF THE PUBLIC RECORDS OF SARASOTA COUNTY, FLORIDA THIS 14th DAY OF December, A.D. 1999.

KAREN E. RUSHING
CLERK OF THE CIRCUIT COURT
SARASOTA COUNTY, FLORIDA
By: *Elaine M. Hamel*
DEPUTY CLERK

LEGEND OF ABBREVIATIONS

- | | |
|---|--|
| AVE. = AVENUE | N.G.V.D. = NATIONAL GEODETIC VERTICAL DATUM |
| BLK. = BLOCK | NO. = NUMBER |
| BLVD. = BOULEVARD | N.O.S. = NATIONAL OCEAN SERVICE |
| B.M. = BENCH MARK | NW = NORTHWEST |
| B.T.O.B. = BACK TOP OF BANK | O.A. = OVER ALL |
| C.B. = CONDOMINIUM BOOK | O/E = OVERHEAD ELECTRIC |
| C.C.C.L. = COASTAL CONSTRUCTION CONTROL LINE | O.R.B. = OFFICIAL RECORDS BOOK |
| CH. = CHORD | OT. = ORDER OF TAKING |
| CH. BRG. = CHORD BEARING | P.B. = PLAT BOOK |
| CHP. = CHAPTER | P.C. = POINT OF CURVATURE |
| C.M. = CONCRETE MONUMENT | P.C.P. = PERMANENT CONTROL POINT |
| C.M.P. = CORRUGATED METAL PIPE | PS. = PAGE |
| CO. = COUNTY | P.I. = POINT OF INTERSECTION |
| CONDO. = CONDOMINIUM | P.L.S. = PROFESSIONAL LAND SURVEYOR |
| CONST. = CONSTRUCTION | P.R.C. = POINT OF REVERSE CURVE |
| COR. = CORNER | P.R.M. = PERMANENT REFERENCE MONUMENT |
| D.B. = DEED BOOK | P.T. = POINT OF TANGENCY |
| D.D. = DATA DRAWER | R. = RADIUS |
| D.N.R. = DEPARTMENT OF NATURAL RESOURCES | R.C.P. = REINFORCED CONCRETE PIPE |
| D.O.T. = DEPARTMENT OF TRANSPORTATION | RD. = ROAD |
| DR. = DRIVE | REF. = REFERENCE |
| DRAIN. = DRAINAGE | RESUB. = RESUBDIVISION |
| E. = EAST | RNG. = RANGE |
| EASE. = EASEMENT | R.P.B. = ROAD PLAT BOOK |
| EP. = EDGE OF PAVEMENT | R.R. = RAILROAD |
| F.A.C. = FLORIDA ADMINISTRATION CODE | RT. = RIGHT |
| F.B. = FIELD BOOK | R/W. = RIGHT-OF-WAY |
| F.D.O.T. = FLORIDA DEPARTMENT OF TRANSPORTATION | S. = SOUTH |
| FL. = FLORIDA | SE. = SOUTHEAST |
| FND. = FOUND | SEC. = SECTION |
| F.N. = FILE NUMBER | S.F.D.D. = SARASOTA-FRUITVILLE DRAINAGE DISTRICT |
| F.P. & L. = FLORIDA POWER AND LIGHT | SR. = STATE ROAD |
| G.T.E. = GENERAL TELEPHONE ELECTRIC | ST. = STREET |
| I.P. = IRON PIPE | SUB. = SUBDIVISION |
| I.R. = IRON ROD | SW. = SOUTHWEST |
| L. = LENGTH | T. = TANGENT |
| LI. = LEFT | T.I.I.F. = TRUSTEES OF THE INTERNAL IMPROVEMENT FUND |
| M.H.W.L. = MEAN HIGH WATER LINE | T.B. = TOP OF BANK |
| MON. = MONUMENT | TWP. = TOWNSHIP |
| M/R/W. = MAINTAINED RIGHT-OF-WAY | U/E. = UNDERGROUND ELECTRIC |
| N. = NORTH | U.S. = UNITED STATES |
| N. & D. = NAIL AND DISK SET | VEG. = VEGETATION |
| NE. = NORTH EAST | W. = WEST |

LEGEND

- = NAIL & DISK SET
- = NAIL & DISK FND.
- = REF NAIL & DISC
- = I.R. SET WITH RED CAP STAMPED COUNTY R/W PLS 1867
- = I.R. FND.
- = RAILROAD SPIKE FND.
- △ = HUB SET
- △ = HUB FND.
- = CONCRETE MONUMENT SET
- = CONCRETE MONUMENT FND.
- = WATER VALVE
- = UTILITY POLE
- = G.T. & T.V. CABLE BOX
- = MANKLE
- = LIGHT POLE
- = FIRE HYDRANT
- = CUT WIRE
- = TOP OF BANK
- = EDGE OF PAVEMENT
- = OAK TREE
- = PINE TREE
- = PALM TREE
- = REBAR WITH 2" ALUMINUM DISK STAMPED P.L.S. NO. 1867
- = NAIL SET

SURVEYOR'S CERTIFICATE

I HEREBY CERTIFY THAT THIS R/W MAP (SHEETS 1-5) REPRESENTS A SPECIFIC PURPOSE SURVEY OF THE ROAD AS SHOWN, THAT THE SURVEY WAS RECENTLY PERFORMED UNDER MY DIRECTION, AND THAT IT IS TRUE AND CORRECT TO THE BEST OF MY KNOWLEDGE AND BELIEF, AND THAT IT MEETS THE MINIMUM TECHNICAL STANDARDS FOR LAND SURVEYING IN THE STATE OF FLORIDA (CH. 21 HH-6, F.A.C.)

DATE OF SURVEY 10-31-89

Elaine M. Hamel
E.R. EMERSON COUNTY SURVEYOR
PROFESSIONAL LAND SURVEYOR NO. 1867
STATE OF FLORIDA
1301 CATTLEMEN ROAD
SARASOTA, FLORIDA 34232-9631

DATE 1-27-94
STATE OF FLORIDA
1867
PROFESSIONAL LAND SURVEYOR

SURVEYOR'S NOTES

- BEARINGS SHOWN HEREON ARE BASED ON THE STATE PLAN COORDINATES SYSTEM USING F.D.O.T. MONUMENTS STAMPED "1-75-83-A54", "1-75-83-A53" AND "1-75-83-A52" WHICH WERE NOT YET ADJUSTED BY THE NATIONAL GEODETIC SURVEY.
- UTILITY OWNERS:
A. TELEPHONE CABLES, LINES, AND POLES ARE OWNED BY GENERAL TELEPHONE COMPANY.
B. POWER CABLE, POLES, AND LINES ARE OWNED BY FLORIDA POWER AND LIGHT COMPANY.
- REF: F.B. 323, PG. 1-3, 12-13, 33-35, AND 67-77.

KEY MAP
PALMER BOULEVARD

SARASOTA COUNTY TRANSPORTATION DEPARTMENT
ENGINEERING DIVISION, SURVEY - MAPPING SECTION

RIGHT OF WAY MAP

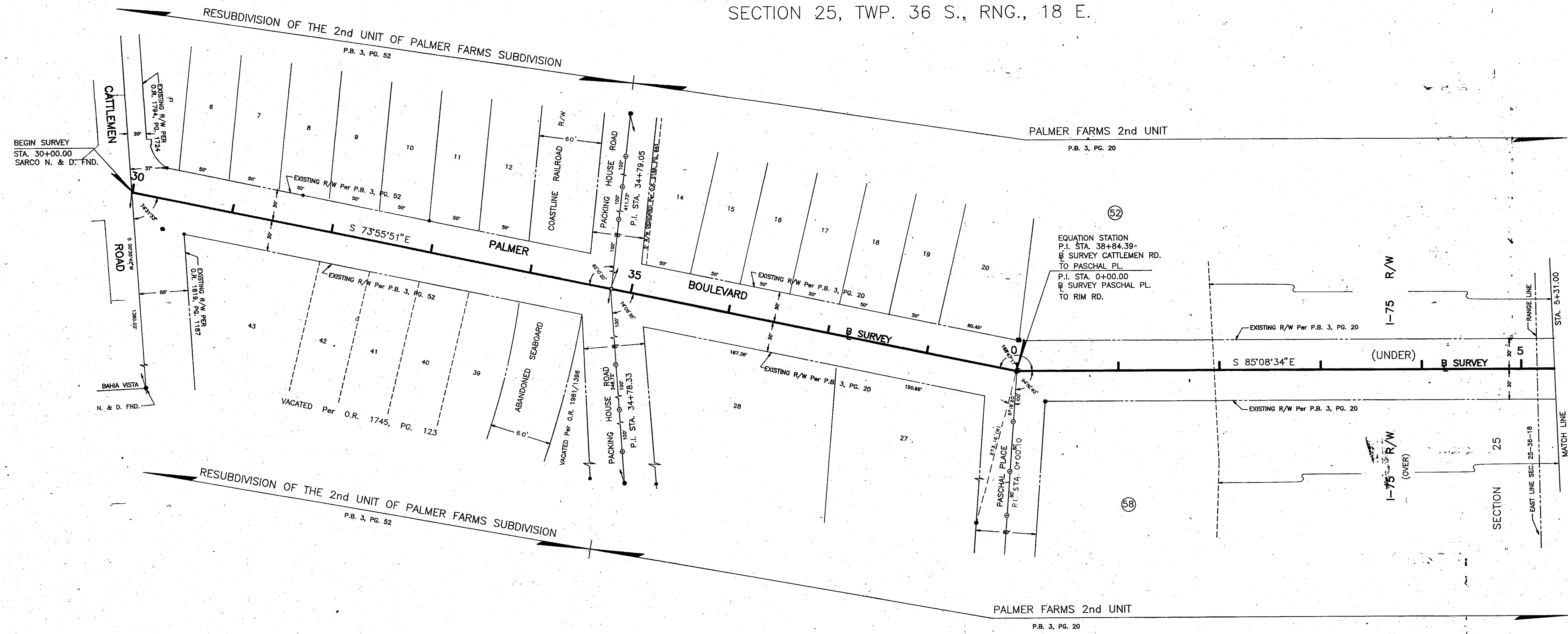
PALMER BOULEVARD
CATTLEMEN ROAD TO RIM ROAD

BY	DATE
R. KEENEN	4-4-89
CHECKED	5-17-89
COMPARED	5-17-89
REF.	SEE NOTE 3

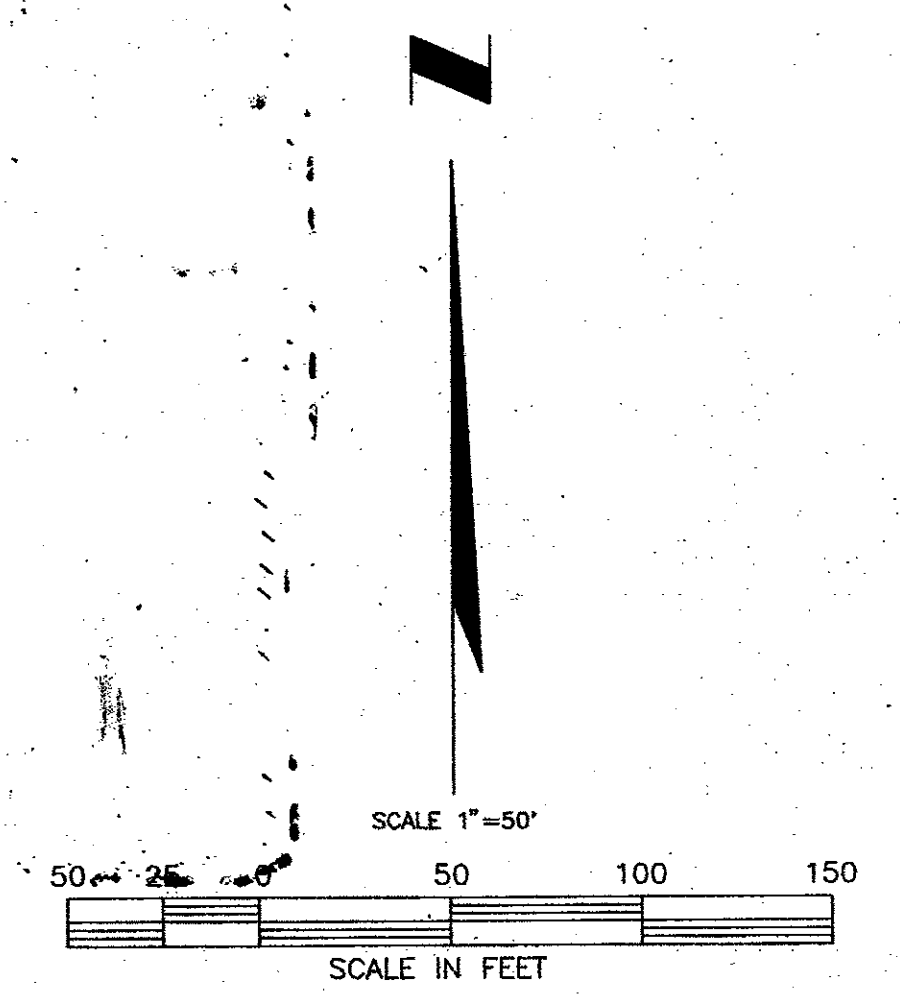
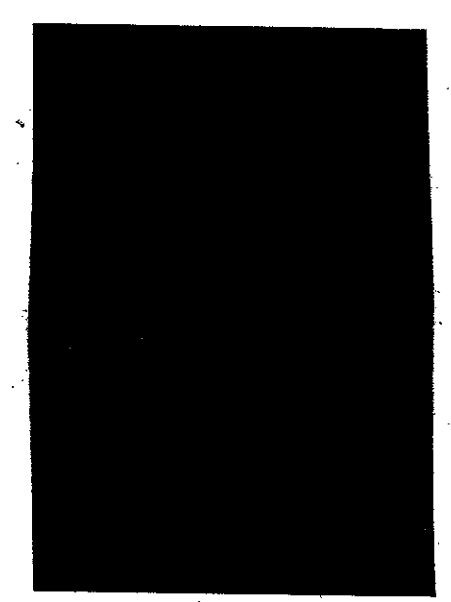
DATE 1-27-94
DATE 11-1-99
DATE 12-6-99

SCALE 1" = 200' PROJECT NO. 8637 SHEET 1 OF 5

SECTION 25, TWP. 36 S., RNG., 18 E.



FILED FOR RECORD
1999 DEC 14 AM 7:50
KAREN E. RUSHING
CLERK OF CIRCUIT COURT
SARASOTA COUNTY, FL

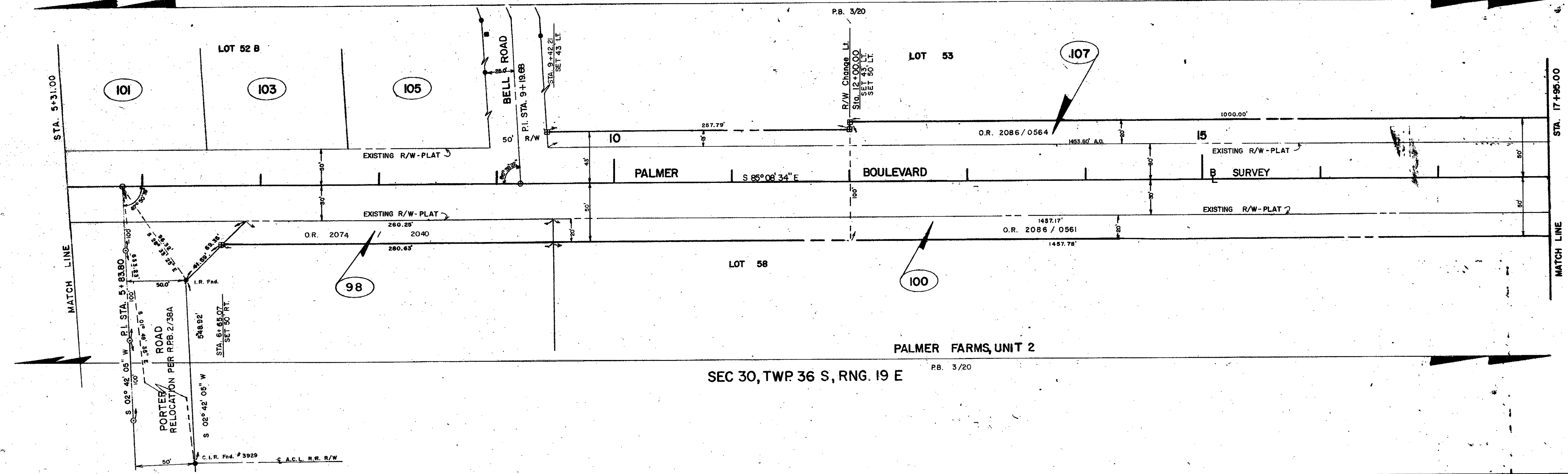


LEGEND

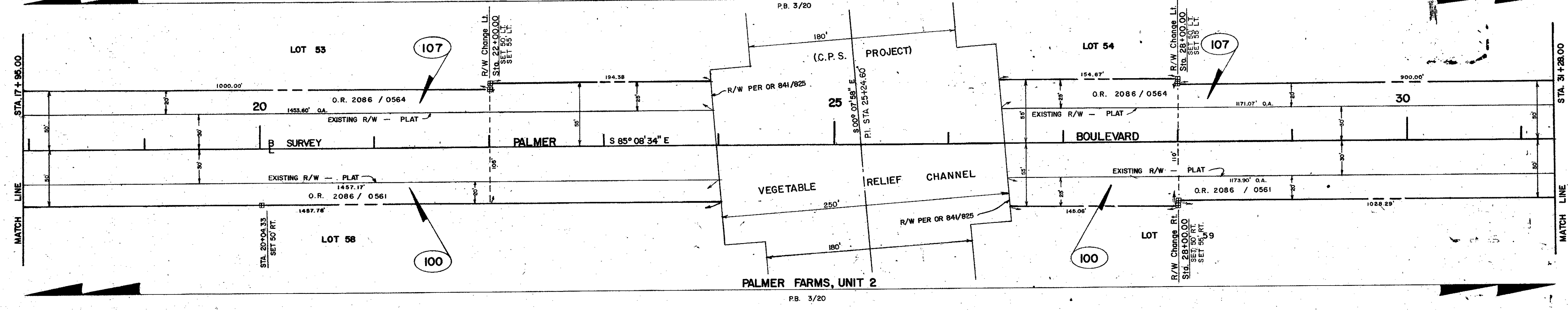
- = NAIL & DISK SET
- = NAIL & DISK FND.
- ⊙ = REF NAIL & DISC
- ⊙ = I.R. SET WITH RED CAP STAMPED COUNTY R/W PLS 1867
- = I.R. FND.
- ⊙ = RAILROAD SPIKE FND.
- △ = HUB SET
- ▲ = HUB FND.
- = CONCRETE MONUMENT SET
- = CONCRETE MONUMENT FND.
- ⊠ = WATER VALVE
- ⊞ = UTILITY POLE
- ⊞ = G.T. & T.V. CABLE BOX
- ⊞ = MANHOLE
- ⊞ = LIGHT POLE
- ⊞ = FIRE HYDRANT
- ⊞ = GUY WIRE
- ⊞ = TOP OF BANK
- ⊞ = EDGE OF PAVEMENT
- ⊞ = OAK TREE
- ⊞ = PINE TREE
- ⊞ = PALM TREE
- ⊞ = REBAR WITH 2" ALUMINUM DISK STAMPED P.L.S. NO 1867
- ⊞ = NAIL SET

SARASOTA COUNTY TRANSPORTATION DEPARTMENT ENGINEERING DIVISION - SURVEY - MAPPING SECTION			
RIGHT OF WAY MAP			
PALMER BOULEVARD CATTLEMEN ROAD TO RIM ROAD			
BY	DATE	DATE	DATE
R. KEENE	2-4-89		
CHECKED	DED 5-17-99		11-1-99
COMPARED	REL 5-17-99		12-6-99
REF:	SEE NOTE 3	COUNTY ENGINEER	
SCALE	PROJECT NO.	SHEET	OF
1" = 50'	8637	2	5

PALMER FARMS, UNIT 2



PALMER FARMS, UNIT 2



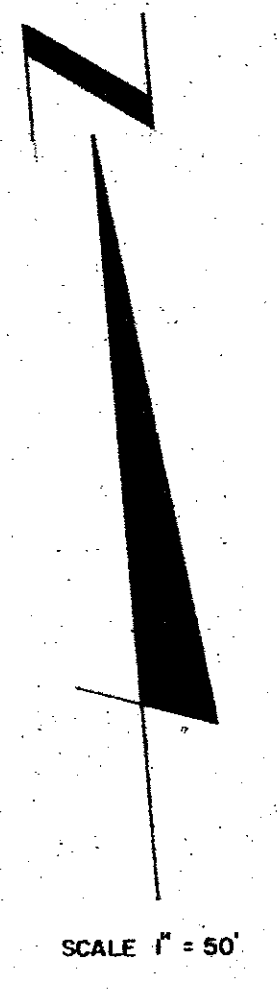
SEC 30, TWP 36 S, RNG. 19 E

FILED FOR RECORD
 1999 DEC 14 AM 7:50
 KAREN E. RUSHING
 CLERK OF CIRCUIT COURT
 SARASOTA COUNTY, FL

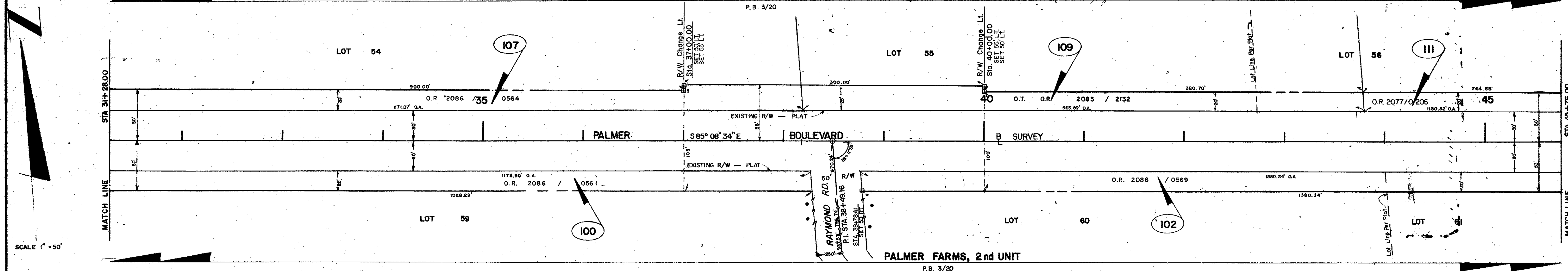
LEGEND

- = NAIL & DISK SET
- = NAIL & DISK FND.
- = REF. NAIL & DISC
- = I.R. SET WITH RED CAP STAMPED COUNTY R/W PLS 1867
- = I.R. FND.
- = RAILROAD SPIKE FND.
- △ = HUB SET
- △ = HUB FND.
- = CONCRETE MONUMENT SET
- = CONCRETE MONUMENT FND.
- ⊕ = WATER VALVE
- ⊕ = UTILITY POLE
- ⊕ = C.T. & T.V. CABLE BOX
- = MANHOLE
- ⊕ = LIGHT POLE
- ⊕ = FIRE HYDRANT
- ⊕ = GUY WIRE
- ⊕ = TOP OF BANK
- ⊕ = EDGE OF PAVEMENT
- = OAK TREE
- = PINE TREE
- ⊕ = PALM TREE
- ⊕ = REBAR WITH 2\"/>

SARASOTA COUNTY TRANSPORTATION DEPARTMENT ENGINEERING DIVISION, CADASTRAL SECTION			
RIGHT OF WAY MAP			
PALMER BOULEVARD CATTLEMEN ROAD TO RIM ROAD			
DRAWN	BY	DATE	
CHECKED	DSD	5-17-99	1-27-99
COMPARED	REL	5-17-99	11-1-99
SEE NOTE 3			12-6-99
SCALE	1"=50'	PROJECT NO.	8637
			SHEET 3 OF 5



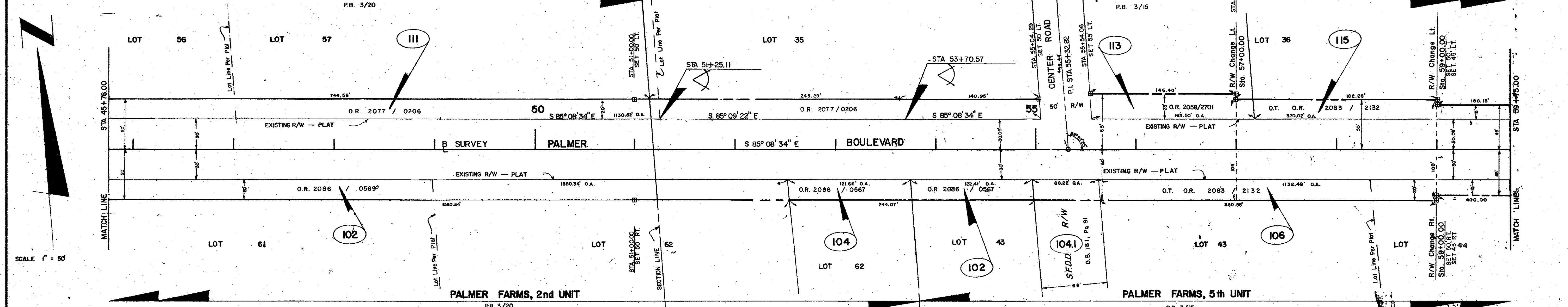
PALMER FARM, 2nd UNIT



SEC 30, TWP 36 S, RNG. 19 E

PALMER FARMS, 2nd UNIT

PALMER FARMS 5th UNIT



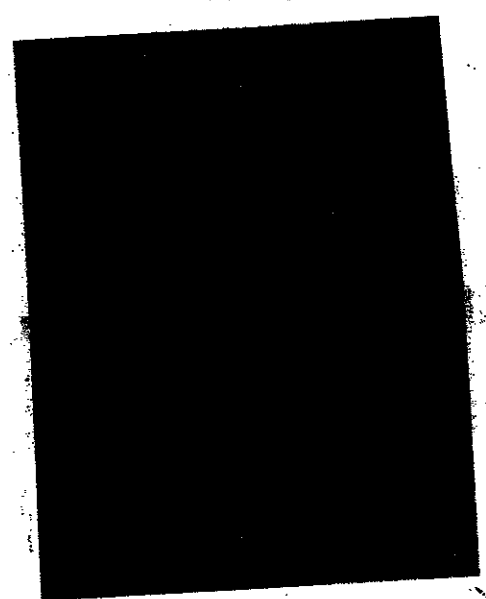
SEC. 30 SEC. 29

TWP 36 S, RNG. 19 E

FILED FOR RECORD

1999 DEC 14 AM 7:50

KAREN E. RUSHING
CLERK OF CIRCUIT COURT
SARASOTA COUNTY, FL



LEGEND

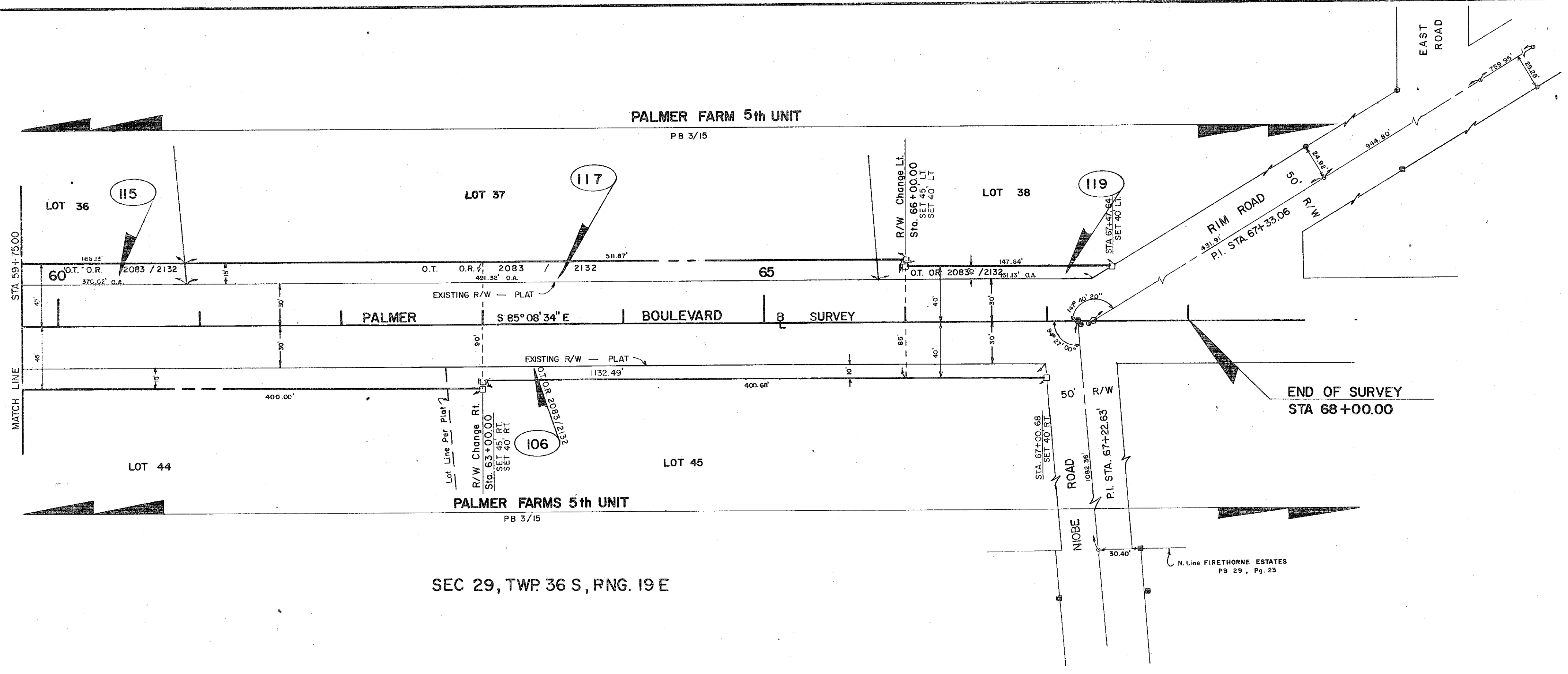
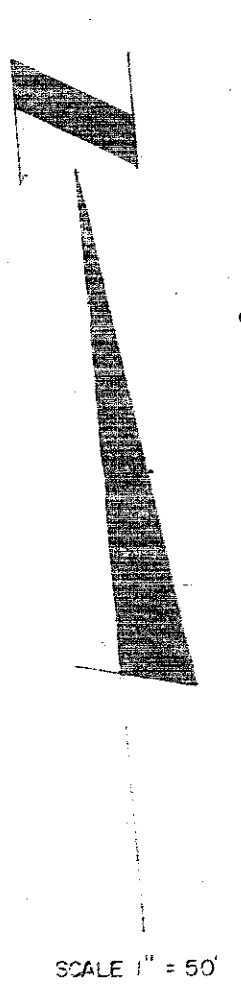
- Q = NAIL & DISK SET
- = NAIL & DISK FND.
- = REF NAIL & DISK
- = I.R. SET WITH RED CAP STAMPED COUNTY R/W PLS 1867
- = I.R. FND.
- = RAILROAD SPIKE FND.
- △ = HUB SET
- ▲ = HUB FND.
- = CONCRETE MONUMENT SET
- = CONCRETE MONUMENT FND.
- ⊕ = WATER VALVE
- ⊗ = UTILITY POLE
- ⊙ = G.T. & T.V. CABLE BOX
- = MANHOLE
- ⊙ = LIGHT POLE
- ⊙ = FIRE HYDRANT
- ⊙ = GUY WIRE
- T.B. = TOP OF BANK
- EP = EDGE OF PAVEMENT
- = OAK TREE
- = PINE TREE
- ⊙ = PALM TREE
- ⊙ = REBAR WITH 2" ALUMINUM DISK STAMPED P.L.S. NO. 1867
- = NAIL SET

SARASOTA COUNTY TRANSPORTATION DEPARTMENT
ENGINEERING DIVISION, CADASTRAL SECTION

RIGHT OF WAY MAP

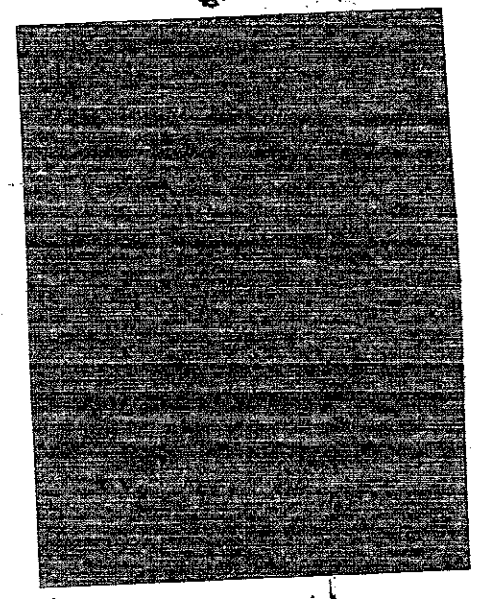
PALMER BOULEVARD
CATTLEMEN ROAD TO RIM ROAD

DRAWN	BY	DATE	
	R. KEENAN	4-4-88	
CHECKED	DSO	5-17-99	
COMPARED	REL	5-17-99	
SEE NOTE 3			
SCALE 1"=50'	PROJECT NO. 8637	SHEET 4 OF 5	



SEC 29, TWP 36 S, RNG. 19 E

FILED FOR RECORD
 1998 DEC 14 AM 7:50
 KAREN E. RUSHING
 CLERK OF CIRCUIT COURT
 SARASOTA COUNTY, FL



LEGEND

- = NAIL & DISK SET
- ⊙ = NAIL & DISK FND.
- ⊗ = REF NAIL & DISC
- ⊙ = I.R. SET WITH RED CAP STAMPED COUNTY R/W PLS 1867
- ⊙ = I.R. FND.
- ⊙ = RAILROAD SPIKE FND.
- ⊙ = HUB SET
- ⊙ = HUB FND.
- ⊙ = CONCRETE MONUMENT SET
- ⊙ = CONCRETE MONUMENT FND.
- ⊙ = WATER VALVE
- ⊙ = UTILITY POLE
- ⊙ = C.T. & T.V. CABLE BOX
- ⊙ = MANHOLE
- ⊙ = LIGHT POLE
- ⊙ = FIRE HYDRANT
- ⊙ = GUY WIRE
- ⊙ = TOP OF BANK
- ⊙ = EDGE OF PAVEMENT
- ⊙ = OAK TREE
- ⊙ = PINE TREE
- ⊙ = PALM TREE
- ⊙ = REBAR WITH 2" ALUMINUM DISK STAMPED P.L.S. NO. 1867
- ⊙ = NAIL SET

SARASOTA COUNTY TRANSPORTATION DEPARTMENT ENGINEERING DIVISION, CADASTRAL SECTION			
RIGHT OF WAY MAP			
PALMER BOULEVARD CATTLEMEN ROAD TO RIM ROAD			
BY	DATE	DATE	
R. KEENAN	1-4-98	1-27-98	
CHECKED	2SD	5-17-99	DATE
COMPARED	REL	5-17-99	DATE
REF	SEE NOTE 3	DATE	
SCALE 1" = 50'		PROJECT NO. 8637	SHEET 5 OF 5