

SEC. 25, TWP. 36 S., RNG. 18 E.

CHICAGO HEIGHTS GROVE

PB 2/221

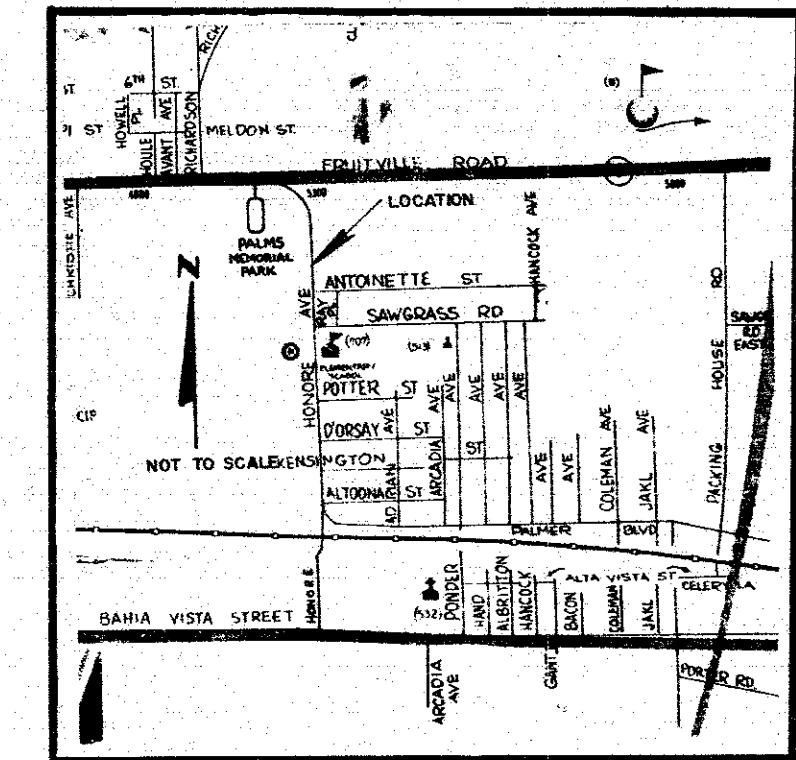
BLOCK A

PALMER BOULEVARD

BROADWAY

SEC. 25, TWP. 36 S., RNG. 18 E.

LOCATION MAP



LEGEND

- Legend items: IRON ROD SET/CAP NO. 1967, RAILROAD SPIKE FND., RAILROAD SPIKE SET, NAIL & DISK, I.R. FND. (NUMBERED), UTILITY POLE, WATER VALVE, WATER METER, G.T.E. UNDERGROUND, G.T.E. MANHOLE, C.M. FND., CONCRETE LIGHT POLE, GUY WIRE, CATCH BASIN, WOOD FENCE, CHAIN LINK FENCE, BARB WIRE FENCE, OAK TREE, TOP OF BANK, RADIAL.

B CURVE DATA: Δ = 89° 44' 07", T = 572.35', C = 811.29', L = 900.55', R = 575.00', PC = 17493.99, PT = 26984.54, CB = N44° 52' 03" W

SEC. 26, TWP. 36 S., RNG. 18 E.

CEDAR HOLLOW

PB. 29/18

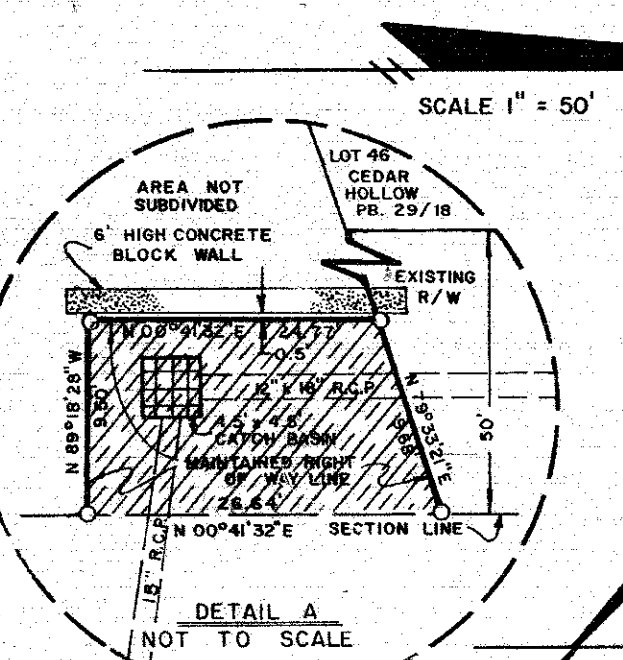
HONORE AVENUE

BROADWAY

SEC. 25, TWP. 36 S., RNG. 18 E.

LEGEND OF ABBREVIATIONS

- Legend of Abbreviations: AVE = AVENUE, BLK = BLOCK, BLVD = BOULEVARD, B.M. = BENCH MARK, B.T.O.B. = BACK TOP OF BANK, C.B. = CONDOMINIUM BOOK, C.C.C.L. = COASTAL CONSTRUCTION CONTROL LINE, CH = CHORD, CH.BRG. = CHORD BEARING, C. = CENTERLINE, C.M. = CONCRETE MONUMENT, C.M.P. = CONCRETE METAL PIPE, CO. = COUNTY, CONDO = CONDOMINIUM, CONST. = CONSTRUCTION, COR. = CORNER, D.B. = DEED BOOK, D.N.R. = DEPARTMENT OF NATURAL RESOURCES, D.O.T. = DEPARTMENT OF TRANSPORTATION, DR. = DRIVE, DRAIN. = DRAINAGE, E. = EAST, EASE. = EASEMENT, EP. = EDGE OF PAVEMENT, F.A.C. = FLORIDA ADMINISTRATION CODE, F.B. = FIELD BOOK, F.D.O.T. = FLORIDA DEPARTMENT OF TRANSPORTATION, FL. = FLORIDA, FND. = FOUND, F.P. & L. = FLORIDA POWER AND LIGHT, G.T.E. = GENERAL TELEPHONE, I.P. = IRON PIPE, I.R. = IRON ROD, L. = LENGTH, LT. = LEFT, M.H.W.L. = MEAN HIGH WATER LINE, MON. = MONUMENT, M/R/W. = MAINTAINED RIGHT-OF-WAY, N. = NORTH, N. & D. = NAIL AND DISC, NE = NORTH EAST, N.C.V.D. = NATIONAL GEODETIC VERTICAL DATUM, NO. = NUMBER, N.O.S. = NATIONAL OCEAN SERVICE, NW = NORTHWEST, O.A. = OVER ALL, O/E = OVERHEAD ELECTRIC, O.R.B. = OFFICIAL RECORDS BOOK, O.T. = ORDER OF TAKING, P.B. = PLAT BOOK, P.C. = POINT OF CURVATURE, P.C.P. = PERMANENT CONTROL POINT, PC. = PAGE, P.I. = POINT OF INTERSECTION, P.L.S. = PROFESSIONAL LAND SURVEYOR, P.R.C. = POINT OF REVERSE CURVE, P.R.M. = PERMANENT REFERENCE MONUMENT, P.T. = POINT OF TANGENCY, R. = RADIUS, R.C.P. = REINFORCED CONCRETE PIPE, RD. = ROAD, REF. = REFERENCE, RESUB. = RESUBDIVISION, RNC. = RANGE, R.P.B. = ROAD PLAT BOOK, R.R. = RAILROAD, RT. = RIGHT, R/W. = RIGHT-OF-WAY, S. = SOUTH, S.E. = SOUTHEAST, SEC. = SECTION, S.F.D.D. = SARASOTA-FRUITVILLE DRAINAGE DISTRICT, STATE ROAD, ST. = STREET, STA. = STATION, SUB. = SUBDIVISION, SW = SOUTHWEST, T. = TANGENT, T.I.I.F. = TRUSTEES OF THE INTERNAL IMPROVEMENT FUND, T.B. = TOP OF BANK, TWP. = TOWNSHIP, U/E = UNDERGROUND ELECTRIC, U.S. = UNITED STATES, VEG. = VEGETATION, W. = WEST.



THIS IS TO CERTIFY THAT THIS MAINTAINED MAP WAS APPROVED BY RESOLUTION NO. 32-111... PASSED AND ADOPTED BY THE BOARD OF COUNTY COMMISSIONERS OF SARASOTA COUNTY, FLORIDA, ON THE 21 DAY OF July, 1992.

BOARD OF COUNTY COMMISSIONERS OF SARASOTA COUNTY, FLORIDA BY: [Signature]

ATTEST: KAREN RUSHING, CLERK OF THE CIRCUIT COURT AND EX-OFFICIO CLERK OF THE BOARD OF COUNTY COMMISSIONERS OF SARASOTA COUNTY, FLORIDA BY: [Signature]

- SURVEYORS NOTES: 1. BEARINGS ARE BASED ON THE PLAT OF CEDAR HOLLOW AS RECORDED IN PLAT BOOK 29, PAGE 18-18... 2. A CHANGE OR JOG ON THE MAINTAINED RIGHT-OF-WAY LINE IS NOT NECESSARILY LOCATED AT AN INTERSECTING PROPERTY LINE. 3. ALL UNDERGROUND FACILITIES NOT LOCATED.

SURVEYORS CERTIFICATE: I HEREBY CERTIFY THAT THIS MAINTAINED R/W MAP SHEETS 1 & 2 A SURVEY OF THE ROAD AS SHOWN, THAT THE SURVEY WAS RECENTLY PERFORMED UNDER MY DIRECTION, THAT IS TRUE AND CORRECT TO THE BEST OF MY KNOWLEDGE AND BELIEF, AND THAT IT MEETS THE MINIMUM TECHNICAL STANDARDS AS SET FORTH BY THE FLORIDA BOARD OF PROFESSIONAL LAND SURVEYORS IN CHAPTER 21 HH-6, F.A.C., PURSUANT TO SECTION 472.027, F.S.

THIS IS TO CERTIFY THAT THE NUMBERED SHEETS TWO(2) OF TWO(2) CONSTITUTES THE OFFICIAL MAINTENANCE MAP SHOWING THE LOCATION AND SURVEY BY THE SARASOTA COUNTY, FLORIDA, TRANSPORTATION DEPARTMENT FOR HONORE AVE., LYING BETWEEN PALMER BLVD. AND FRUITVILLE ROAD, ALL BEING IN SECTIONS 23, 24, 25 AND 26 TOWNSHIP 36 S., RANGE 18 E., SARASOTA COUNTY, FLORIDA, THE PROPERTY SHOWN CROSS-HATCHED ON THIS MAP HAS BEEN VESTED IN SARASOTA COUNTY, FLORIDA, PURSUANT TO THE PROVISIONS OF CHAPTER 95.361, FLORIDA STATUTES OF 1991.

ACCEPTED FOR FILES AND RECORDED IN THE PUBLIC RECORDS OF SARASOTA COUNTY, FLORIDA, THIS 7 DAY OF July, 1992. ROAD PLAT BOOK 3 PAGE 46-46A

[Signature] CLERK OF THE CIRCUIT COURT SARASOTA COUNTY, FLORIDA

THIS IS TO CERTIFY THAT THE LIMITS OF THE ROADWAY OUTSIDE OF PLATTED RIGHT-OF-WAY AS SHOWN CROSS-HATCHED HEREON, HAS BEEN MAINTAINED CONTINUOUSLY FOR OVER FOUR (4) YEARS WITHOUT INTERRUPTION.

[Signature] PAUL KOPITZKE AREA SUPERINTENDENT HIGHWAY MAINTENANCE DIVISION

E R EMERSON, COUNTY SURVEYOR PROFESSIONAL LAND SURVEYOR NO 1967 STATE OF FLORIDA 1301 CATTLEMAN ROAD SARASOTA, FLORIDA 34232-9631

SARASOTA COUNTY TRANSPORTATION DEPARTMENT ENGINEERING DIVISION, CADASTRAL SECTION

MAINTAINED RIGHT OF WAY MAP PALMER BLVD. AND HONORE AVE. ARCADIA AVE. TO FRUITVILLE RD.

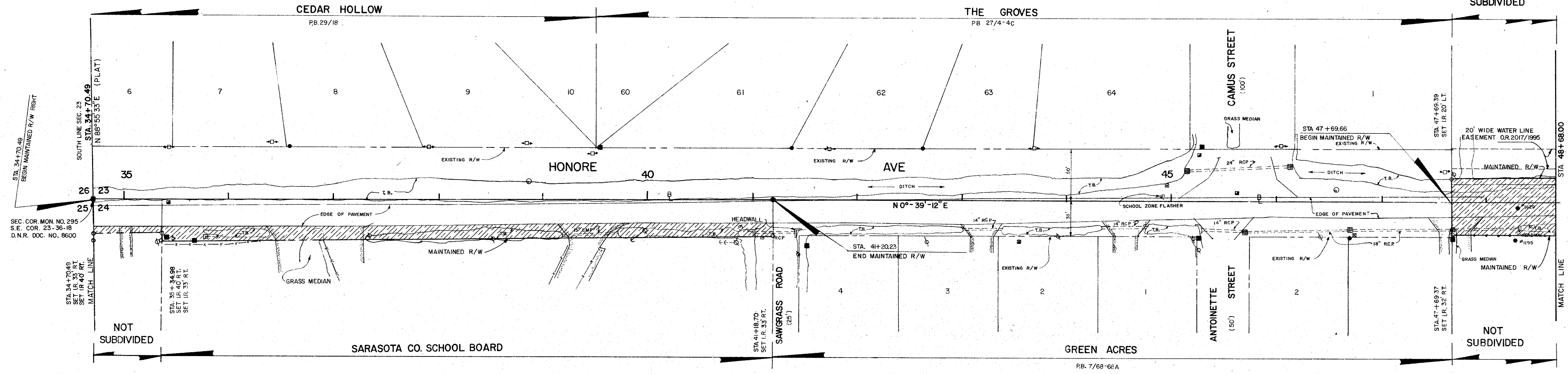
Table with columns: DRAWN, CHECKED, COMPARED, REF, SCALE. Includes dates and signatures.

PROJECT NO. 86114 SHEET 1 OF 2

B.C.C. RESO. R 92-177, ORB. 2419, PG. 2495

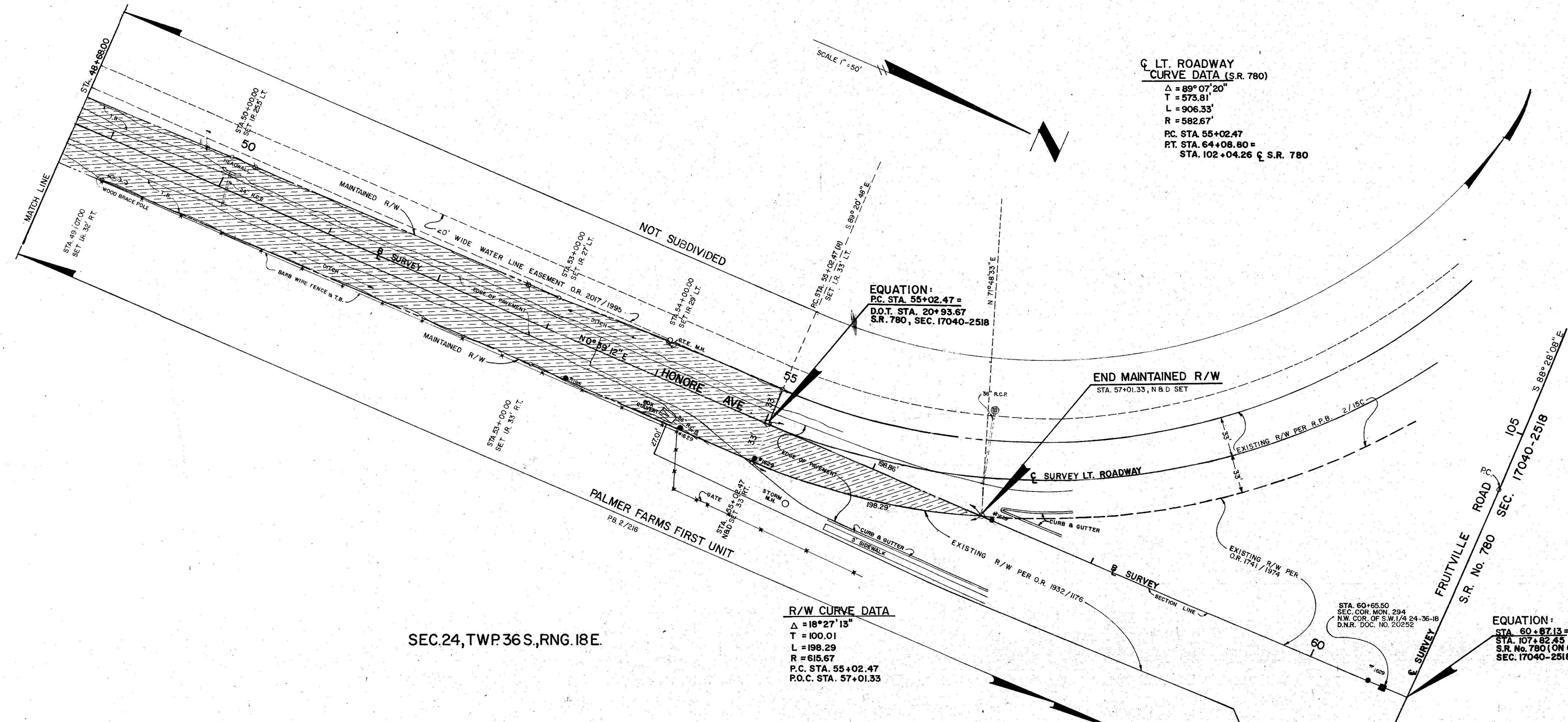
SEC.23,TWP.36S.,RNG.18 E

NOT SUBDIVIDED



SEC.24,TWP.36S.,RNG.18 E.

SEC.23,TWP.36S.,RNG.18 E



LT. ROADWAY
CURVE DATA (S.R. 780)
 $\Delta = 89^{\circ}07'20"$
 $T = 573.81'$
 $L = 906.33'$
 $R = 582.67'$
 P.C. STA. 55+02.47
 P.T. STA. 64+08.80 =
 STA. 102+04.26 C S.R. 780

EQUATION:
 P.C. STA. 55+02.47 =
 D.O.T. STA. 20+93.67
 S.R. 780, SEC. 17040-2518

S.R. No. 780
 CURVE DATA
 P.I. STA. 107+82.50
 $\Delta = 02^{\circ}18'40"$ L.T.
 $D = 00^{\circ}30'00"$
 $T = 231.14'$
 $L = 462.22'$
 $R = 11,459.16'$
 P.L. STA. 105+51.36
 P.T. STA. 110+13.58

R/W CURVE DATA
 $\Delta = 18^{\circ}27'13"$
 $T = 100.01'$
 $L = 198.29'$
 $R = 615.67'$
 P.C. STA. 55+02.47
 P.O.C. STA. 57+01.33

EQUATION:
 STA. 60+87.13 =
 STA. 107+82.45
 S.R. No. 780 (ON CURVE)
 SEC. 17040-2518

SEC.24,TWP.36S.,RNG.18 E.

SARASOTA COUNTY TRANSPORTATION DEPARTMENT ENGINEERING DIVISION, CADASTRAL SECTION			
MAINTAINED RIGHT OF WAY MAP			
PALMER BLVD AND HONORE AVE. ARCADIA AVE. TO FRUITVILLE RD.			
DRAWN	BY	DATE	 R. KEENAN COUNTY ENGINEER DATE 6-22-92
CHECKED	R.P.B.	10-19-87	
COMPARED	K.C.W.	2-1-88	
REF:	FB 308 / pgs. 67-80		
	FB 136 / pgs. 59-63		
	FB 228 / pgs. 1-7, 336/36		
SCALE	1" = 50'	PROJECT NO.	86114
REVISION:	ADDED DOT R/W JAN. 92		
		SHEET	2 OF 2