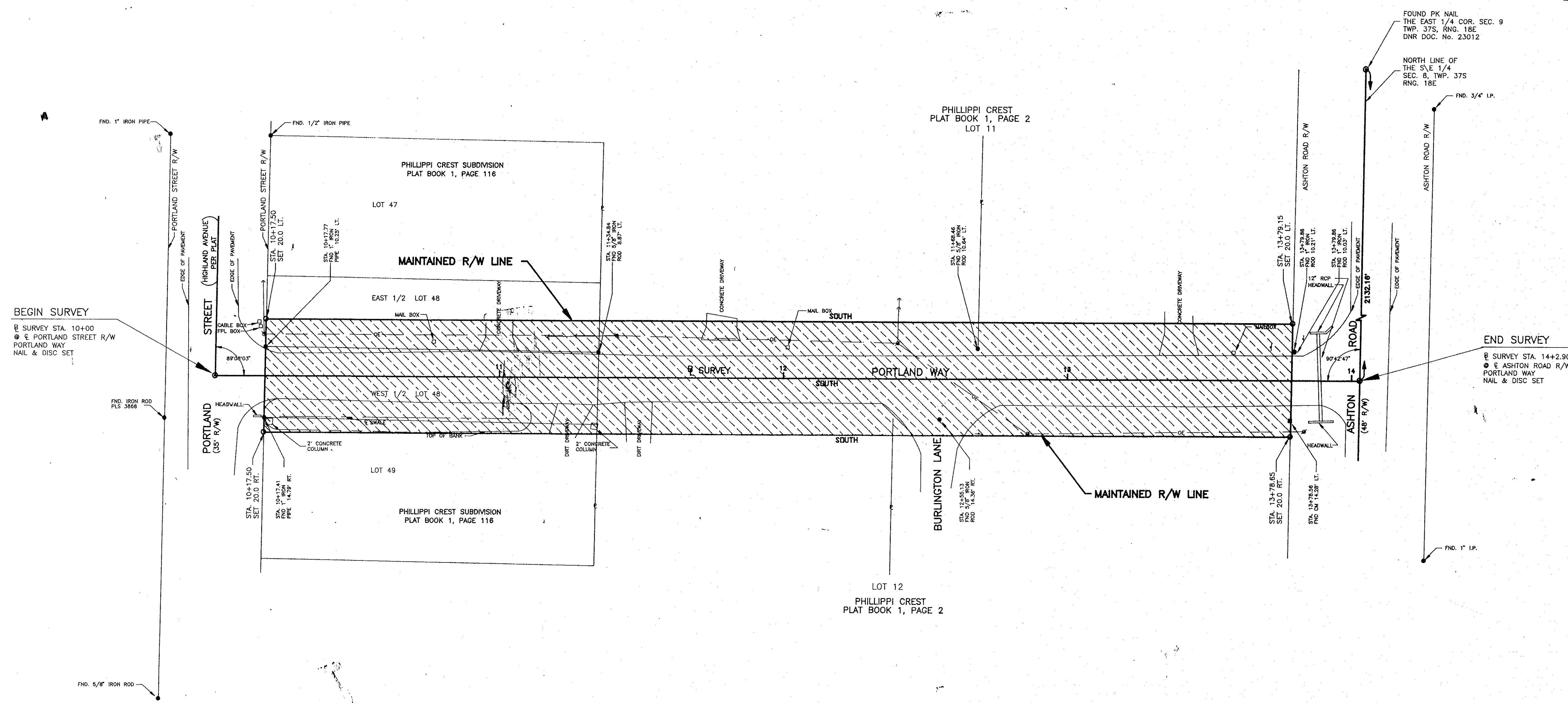
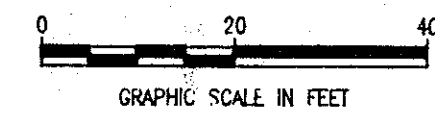


SCALE : 1" = 20'



BEGIN SURVEY
SURVEY STA. 10+00
PORTLAND STREET R/W
PORTLAND WAY
NAIL & DISC SET

END SURVEY
SURVEY STA. 14+2.80
ASHTON ROAD R/W
PORTLAND WAY
NAIL & DISC SET

FILED FOR RECORD
MAR 11 PM 3:21
KAREN E. RUSHING
CLERK OF CIRCUIT COURT
SARASOTA COUNTY, FL.

SECTION 8, TOWNSHIP 37 SOUTH, RANGE 18 EAST

SURVEYOR'S CERTIFICATE

I HEREBY CERTIFY THAT THIS MAINTAINED RIGHT-OF-WAY MAP REPRESENTS A SURVEY OF THE ROAD ALIGNMENT AS SHOWN HEREON, THAT THE SURVEY WAS RECENTLY PERFORMED UNDER MY DIRECTION, THAT IT IS TRUE AND CORRECT TO THE BEST OF MY KNOWLEDGE AND BELIEF AND THAT THE SURVEY MEETS THE MINIMUM TECHNICAL STANDARDS AS SET FORTH BY THE FLORIDA BOARD OF PROFESSIONAL LAND SURVEYORS IN CHAPTER 61 G 17, F.A.C. PURSUANT TO SECTION 472.027, F.S.

DATE OF SURVEY: 01-03-95
DATE MONUMENTS SET: 02-27-95

JOHN C. MINDER, P.L.S. # 4071
MINDER & RHODES ENGINEERING CORPORATION
5600 CLARK ROAD (H-3)
SARASOTA, FLORIDA 34233

SURVEYOR'S NOTES

- 1. BEARINGS SHOWN HEREON ARE BASED ON THE ASSUMPTION THAT THE CENTERLINE OF PORTLAND WAY AS BEING DUE NORTH AS PER THE RECORDED PLAT OF PHILLIPPE CREST, PLAT BOOK 17, PAGE 2, AND THE PLAT OF PHILLIPPE CREST SUBDIVISION PLAT BOOK 1, PAGE 116 BOTH OF THE PUBLIC RECORDS OF SARASOTA COUNTY, FLORIDA.
- 2. A CHANGE OR JOG ON THE MAINTAINED RIGHT-OF-WAY LINE IS NOT NECESSARILY LOCATED AT AN INTERSECTING PROPERTY LINE
- 3. UNDERGROUND FACILITIES NOT LOCATED

LEGEND

- = IRON ROD TO BE SET WITH SET CAP STAMPED COUNTY P.L.S.'S. NO. 4149
- = POWER POLE
- = GUY WIRE
- = G.T.E. BOX
- = FOUND IRON ROD/PIPE
- ⊙ = SET PK NAIL & DISC

LEGEND OF ABBREVIATIONS

- B = BASELINE
- CH.P. = CHAPTER
- P.L. = CENTERLINE
- ⊕ = CORRUGATED METAL PIPE
- CO. = COUNTY
- COR. = CORNER
- B.D. = DEED BOOK
- D.N.R. = DEPARTMENT OF NATURAL RESOURCES
- D.O.T. = DEPARTMENT OF TRANSPORTATION
- DRAIN. = DRAINAGE
- EASE. = EASEMENT
- F.A.C. = FLORIDA ADMINISTRATIVE CODE
- F.B. = FIELD BOOK
- FND. = FOUND
- F.P. & L. = FLORIDA POWER AND LIGHT
- G.T.E. = GENERAL TELEPHONE ELECTRIC
- I.P. = IRON PIPE
- F.S. = FLORIDA STATUTES
- OE = OVERHEAD ELECTRIC
- O.R.B. = OFFICIAL RECORDS BOOK
- P.B. = PLAT BOOK
- P.I. = POINT OF INTERSECTION
- PL. = PROPERTY LINE
- P.L.S. = PROFESSIONAL LAND SURVEYOR
- R.C.P. = REINFORCED CONCRETE PIPE
- REF. = REFERENCE
- RNG. = RANGE
- R.P.B. = ROAD PLAT BOOK
- R/W = RIGHT-OF-WAY
- SEC. = SECTION
- S.R. = STATE ROAD
- STA. = STATION
- SUB. = SUBDIVISION
- TWP. = TOWNSHIP
- I.R. = IRON ROD
- MON. = MONUMENT
- M/R/W = MAINTAINED RIGHT-OF-WAY
- N.&D. = NAIL AND DISC

THIS IS TO CERTIFY THAT THE NUMBERED SHEETS ONE (1) OF ONE (1) CONSTITUTES THE OFFICIAL MAINTENANCE MAP SHOWING THE LOCATION AND SURVEY BY MINDER AND RHODES ENGINEERING CORPORATION FOR PORTLAND WAY, LYING BETWEEN ASHTON ROAD AND PORTLAND STREET (HIGHLAND AVE. PER PLAT), ALL BEING IN SECTION 8, TOWNSHIP 37 SOUTH, RANGE 18 EAST, SARASOTA COUNTY, FLORIDA. PURSUANT TO THE PROVISIONS OF CHAPTER 95.361, FLORIDA STATUTES OF 1991.

THIS IS TO CERTIFY THAT THIS MAINTAINED MAP WAS APPROVED BY RESOLUTION NO. 95-269 PASSED AND ADOPTED BY THE BOARD OF COUNTY COMMISSIONERS OF SARASOTA COUNTY, FLORIDA ON THE 21st DAY OF November, A.D. 1995.

ATTEST: KAREN E. RUSHING CLERK OF THE CIRCUIT COURT AND EX-OFFICIO CLERK OF THE BOARD OF COUNTY COMMISSIONERS OF SARASOTA COUNTY, FLORIDA BY: Kwan Kay Garland DEPUTY CLERK

THIS IS TO CERTIFY THAT THE LIMITS OF THE ROADWAY SHOWN CROSS-HATCHED HEREON, HAS BEEN MAINTAINED CONTINUOUSLY FOR OVER FOUR (4) YEARS WITHOUT INTERRUPTION. STEVEN T. BERGER P.E. ENGINEERING PRODUCTION & SCHEDULING

FILED FOR RECORD IN ROAD PLAT BOOK 4 AT PAGE 10 OF THE PUBLIC RECORDS OF SARASOTA COUNTY, FLORIDA, THIS DAY OF March, A.D. 1997.

KAREN E. RUSHING CLERK OF THE CIRCUIT COURT SARASOTA COUNTY, FLORIDA BY: Claire M. Hamel DEPUTY CLERK

Form for MINDER & RHODES ENGINEERING CORPORATION, RIGHT-OF-WAY SURVEY, PORTLAND WAY, ASHTON ROAD TO PORTLAND STREET. Includes a table with columns for BY, DATE, DRAWN, CHECKED, COMPARED, REF., SCALE, PROJECT NO., JOB NO., SHEET 1 OF 1.

RESO. 95 269 O.R.B. 2926 PG. 1681