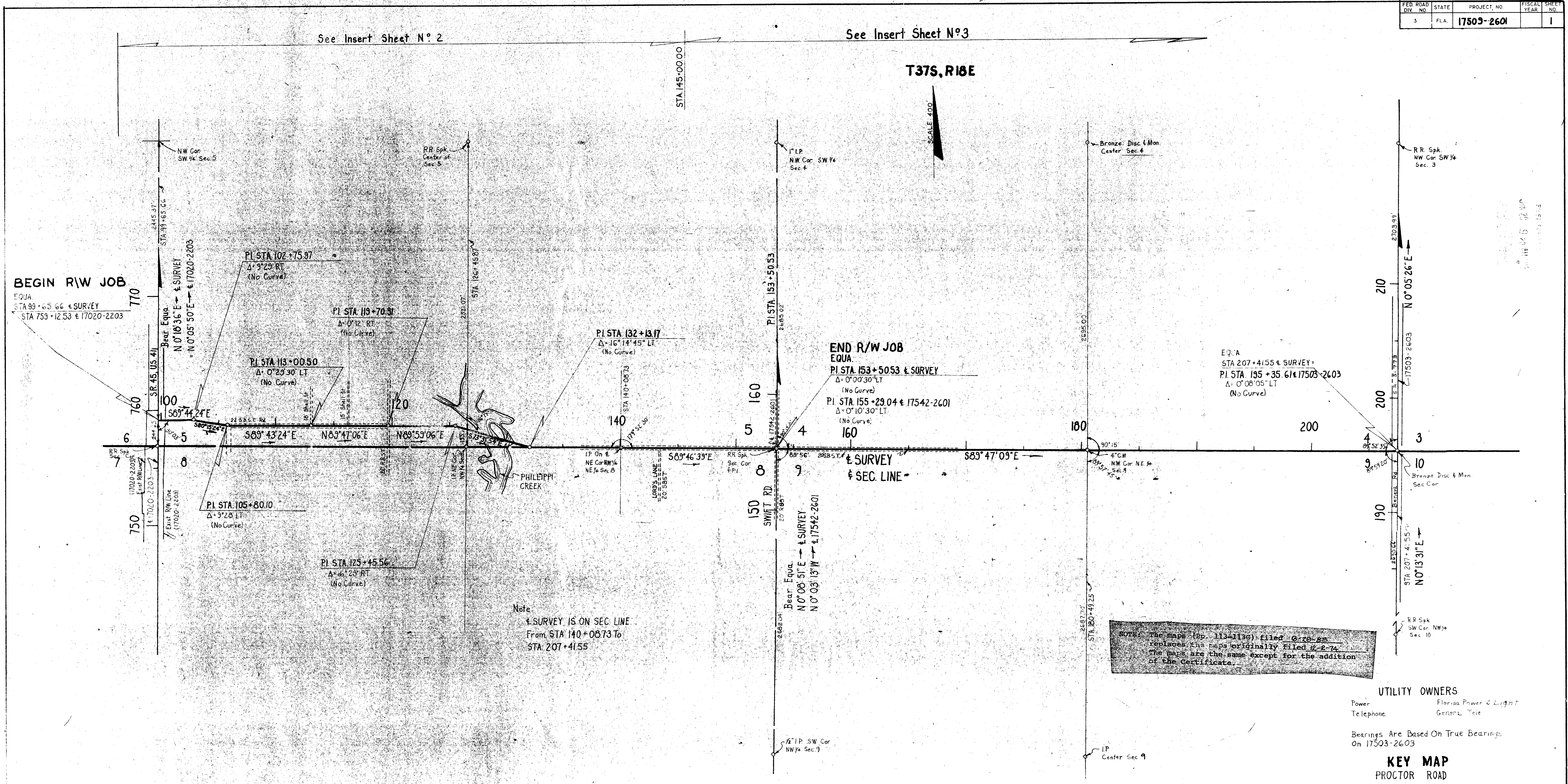


FED. ROAD DIV. NO.	STATE	PROJECT, NO.	FISCAL YEAR	SHEET NO.
3	FLA.	17503-2601		1

See Insert Sheet N° 2

See Insert Sheet N° 3

T375, R18E



BEGIN R/W JOB
EQUA
STA 99+65.66 ± SURVEY
STA 759+12.53 ± 17020-2203

END R/W JOB
EQUA
PI STA 153+50.53 ± SURVEY
PI STA 155+29.04 ± 17542-2601
PI STA 155+29.04 ± 17542-2601
(No Curve)

EQUA
STA 207+41.55 ± SURVEY
PI STA 135+35.61 ± 17503-2603
PI STA 135+35.61 ± 17503-2603
(No Curve)

Note
± SURVEY IS ON SEC. LINE
From STA 140+08.73 To
STA 207+41.55

NOTE: The maps (pp. 113-113G) filed 6-28-82 replaces the maps originally filed 12-2-74. The maps are the same except for the addition of the Certificate.

UTILITY OWNERS
Power Florida Power & Light
Telephone General Tele
Bearings Are Based On True Bearings
On 17503-2603

KEY MAP
PROCTOR ROAD

- PI STA 102+75.97 Δ 9°29' RT
- PI STA 105+80.10 Δ 9°28' LT (No Curve)
- PI STA 113+00.50 Δ 0°29'30" LT (No Curve)
- PI STA 119+70.91 Δ 0°12' RT (No Curve)
- PI STA 125+45.56 Δ 16°29' RT (No Curve)
- PI STA 132+13.17 Δ 16°14'45" LT (No Curve)
- PI STA 153+50.53 Δ 0°00'30" LT (No Curve)

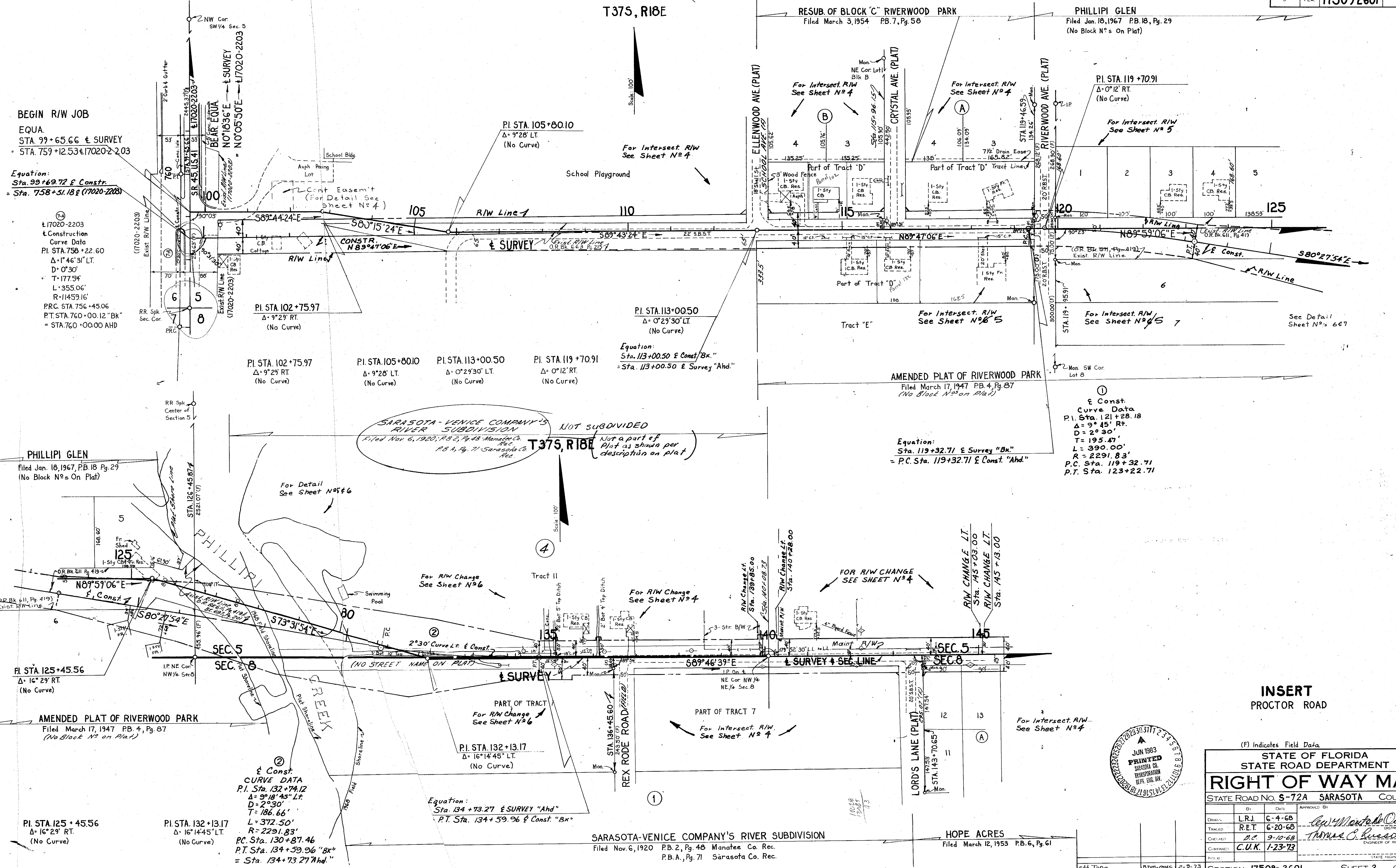
"THIS RIGHT OF WAY MAP WHEN RECORDED IS AN INSTRUMENT OF TITLE CONVEYANCE, TRANSFERRING IN ACCORDANCE WITH FLORIDA STATUTES 337.29 (1977) ALL RIGHT, TITLE AND INTEREST OF THE FLORIDA DEPARTMENT OF TRANSPORTATION IN THE ROAD, STREET, HIGHWAY SET FORTH ON THIS MAP TO SARASOTA COUNTY."
RECORDED IN PUBLIC RECORDS OF SARASOTA COUNTY, FLORIDA, THIS 29TH DAY OF JUNE A.D. 1983 IN ROAD PLAT BOOK 1 PAGE 113-113G.
Michele M. Mikoy, Chief Deputy
CLERK OF PUBLIC ACCOUNTS
SARASOTA COUNTY, FLORIDA

Land Ties, Subd. Rev. Mon. & W. Plotted from F.B. 113-113G
High Spog. Plotted from F.B. 113-113G

STATE OF FLORIDA	
STATE ROAD DEPARTMENT	
RIGHT OF WAY MAP	
STATE ROAD NO. 5-72A	SARASOTA COUNTY
LRU 524.00	NET 6.17
DC 20.00	
C. W. Monte De Ca	
END JOB STA.	B.A.L. 7-26-74
DATE	5-26-74
SECTION 17503-2601 SHEET 1 OF 1	



FED. ROAD DIV. NO.	STATE	PROJECT NO.	FISCAL YEAR	SHEET NO.
3	FLA.	17509-2601		2



BEGIN R/W JOB
 EQUA.
 STA. 99+65.66 ± SURVEY
 STA. 759+12.53 ± 17020-2203

Equation:
 Sta. 99+69.72 ± Constr.
 = Sta. 758+51.18 ± (17020-2203)

± 17020-2203
 ± Construction
 Curve Data
 P.I. STA. 758+22.60
 Δ = 1° 46' 31" LT.
 D = 0° 30'
 T = 177.54'
 L = 355.06'
 R = 11459.16'
 P.R.C. STA. 756+45.06
 P.T. STA. 760+00.12 "Bk."
 = STA. 760+00.00 AHD

PI. STA. 102+75.97
 Δ = 9° 29' RT.
 (No Curve)

PI. STA. 105+80.10
 Δ = 9° 28' LT.
 (No Curve)

PI. STA. 113+00.50
 Δ = 0° 29' 30" LT.
 (No Curve)

PI. STA. 119+70.91
 Δ = 0° 12' RT.
 (No Curve)

Equation:
 Sta. 113+00.50 ± Const. "Bk."
 = Sta. 113+00.50 ± Survey "Ahd."

①
 ± Const.
 Curve Data
 P.I. Sta. 121+28.18
 Δ = 9° 45' RT.
 D = 2° 30'
 T = 195.47'
 L = 390.00'
 R = 2291.83'
 P.C. Sta. 119+32.71
 P.T. Sta. 123+22.71

SARASOTA-VENICE COMPANY'S
 RIVER SUBDIVISION
 Filed Nov. 6, 1920, P.B. 2, Pg. 48 Manatee Co. Rec.
 P.B. 4, Pg. 71 Sarasota Co. Rec.

NOT SUBDIVIDED
 Not a part of
 Plat as shown per
 description on plat

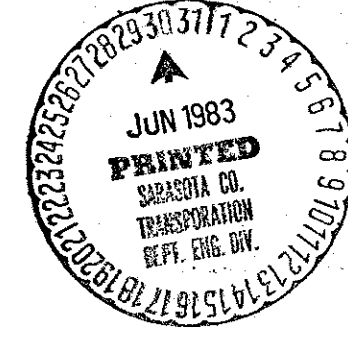
PHILLIPI GLEN
 Filed Jan. 18, 1967, P.B. 18, Pg. 29
 (No Block Nos. on Plat)

AMENDED PLAT OF RIVERWOOD PARK
 Filed March 17, 1947, P.B. 4, Pg. 87
 (No Block Nos. on Plat)

SARASOTA-VENICE COMPANY'S RIVER SUBDIVISION
 Filed Nov. 6, 1920, P.B. 2, Pg. 48 Manatee Co. Rec.
 P.B.A., Pg. 71 Sarasota Co. Rec.

HOPE ACRES
 Filed March 12, 1953, P.B. 6, Pg. 61

INSERT
 PROCTOR ROAD

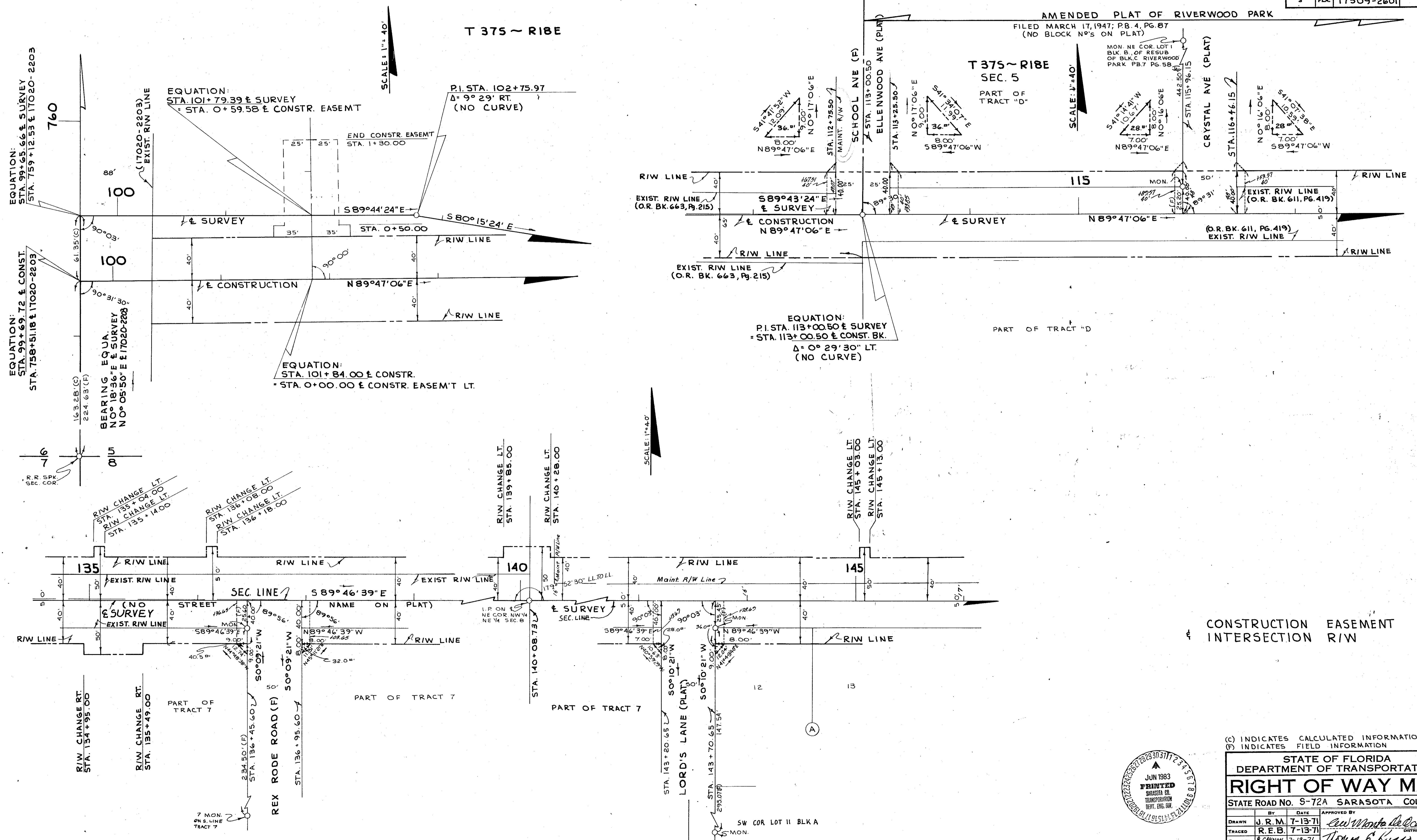


(F) Indicates Field Data.

STATE OF FLORIDA		STATE ROAD DEPARTMENT	
RIGHT OF WAY MAP			
STATE ROAD NO. 5-72A		SARASOTA	COUNTY
DATE	BY	DATE	APPROVED BY
6-4-68	L.R.J.	6-20-68	Thomas C. Russo
9-10-68	D.C.	1-23-73	THOMAS C. RUSSO
1-23-73	C.U.K.		

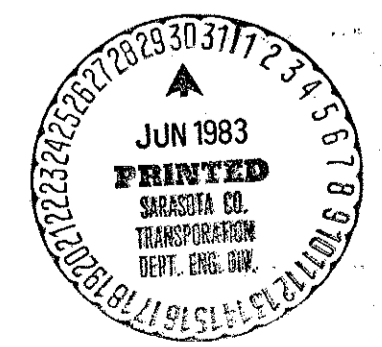
SECTION 17509-2601 SHEET 2 OF

FED. ROAD DIV. No.	STATE	PROJECT No.	FISCAL YEAR	SHEET No.
3	FLA.	17509-2601		4



CONSTRUCTION EASEMENT & INTERSECTION R/W

(C) INDICATES CALCULATED INFORMATION
(S) INDICATES FIELD INFORMATION



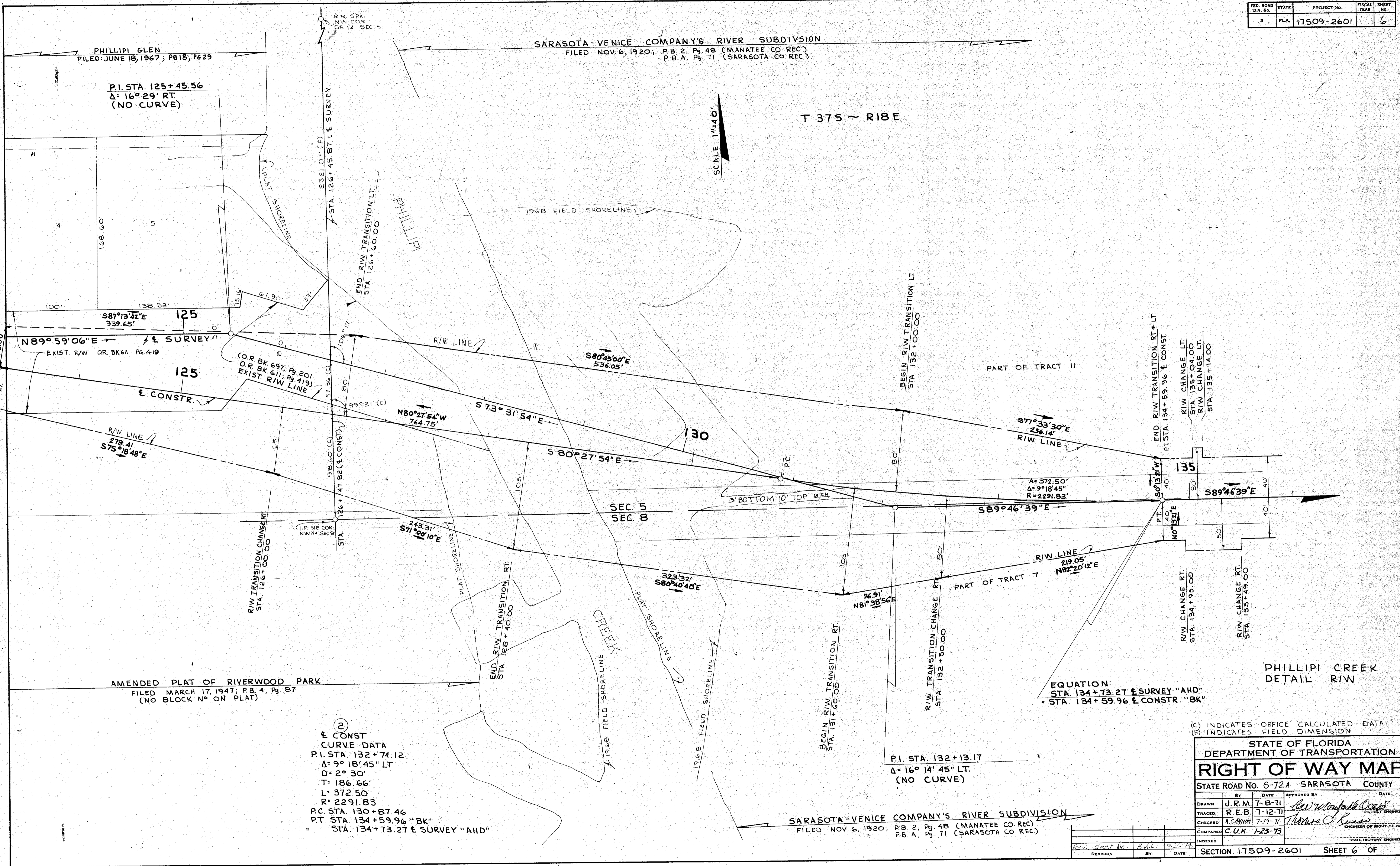
STATE OF FLORIDA DEPARTMENT OF TRANSPORTATION			
RIGHT OF WAY MAP			
STATE ROAD NO. 5-72A SARASOTA COUNTY			
DRAWN BY	J.R.M.	DATE	7-13-71
TRACED BY	R.E.B.	DATE	7-13-71
CHECKED BY	R. CANNON	DATE	7-19-71
COMPARED BY	C.U.K.	DATE	1-23-73
APPROVED BY	<i>Law Monte de Oca</i> DISTRICT ENGINEER		
ENGINEER OF RIGHT OF WAY	<i>Thomas B. Kues</i>		
INDEXED		DATE	7-24-74
REVISION		BY	DATE
SECTION 17509-2601		SHEET 4 OF	

SARASOTA-VENICE COMPANY'S RIVER SUBDIVISION
FILED NOV. 6, 1920; PB 2, PG. 48 (MANATEE CO. RECORDS)
PB A, PG. 71 (SARASOTA CO. RECORDS)

HOPE ACRES
FILED MARCH 12, 1953; PB. 6, PG. 61

Revised Map	DATE	BY	DATE
REV. SHEET No.	8.1	DATE	7-24-74

FED. ROAD DIV. No.	STATE	PROJECT No.	FISCAL YEAR	SHEET No.
3	FLA.	17509-2601		6



(2)
 CONST
 CURVE DATA
 P.I. STA. 132+74.12
 Δ = 9° 18' 45" LT
 D = 2° 30'
 T = 186.66'
 L = 372.50'
 R = 2291.83'
 P.C. STA. 130+87.46
 P.T. STA. 134+59.96 "BK"
 STA. 134+73.27 SURVEY "AHD"

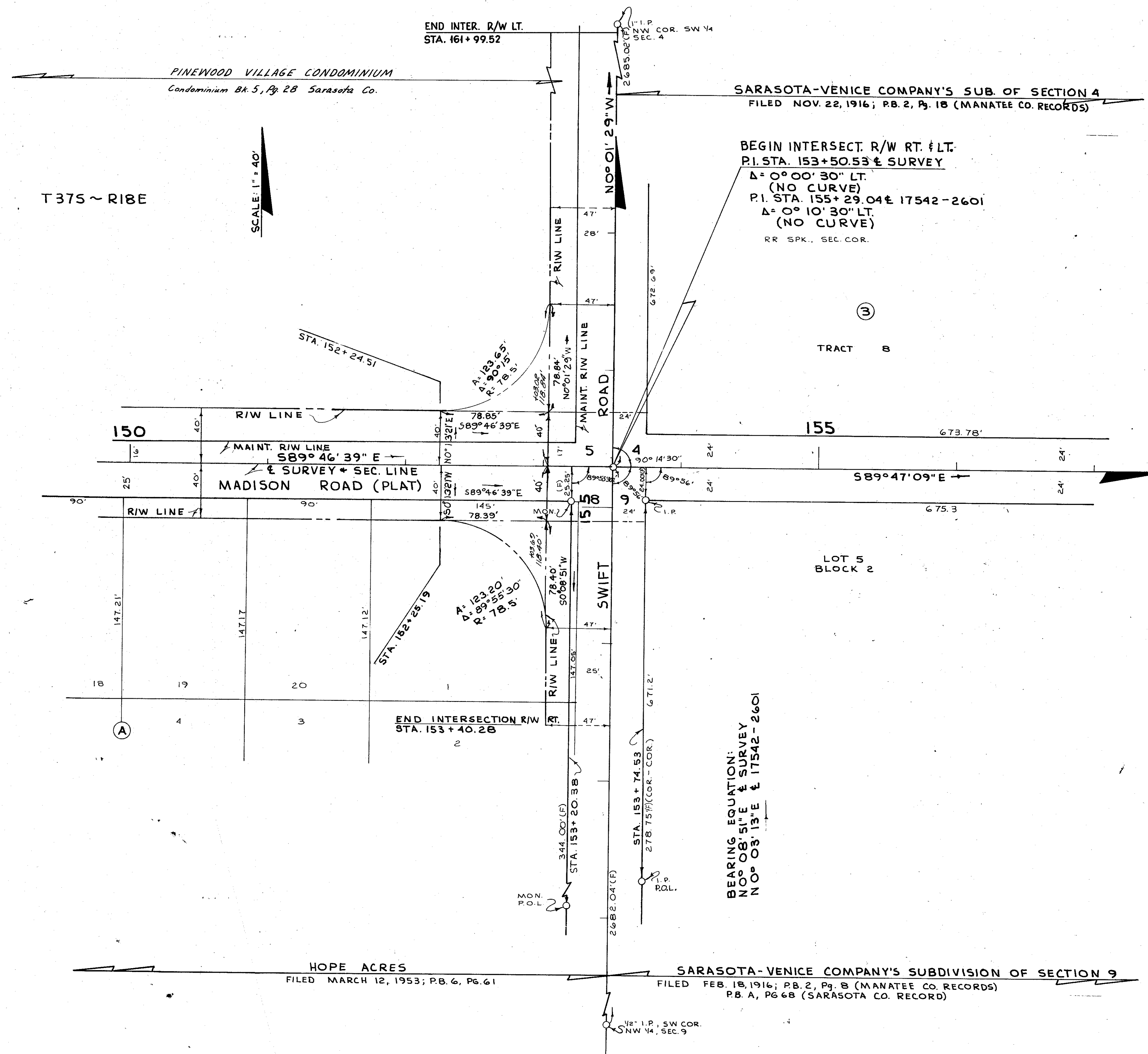
EQUATION:
 STA. 134+73.27 SURVEY "AHD"
 = STA. 134+59.96 CONST. "BK"

(C) INDICATES OFFICE CALCULATED DATA
 (F) INDICATES FIELD DIMENSION

STATE OF FLORIDA DEPARTMENT OF TRANSPORTATION				
RIGHT OF WAY MAP				
STATE ROAD No. S-72A SARASOTA COUNTY				
BY	DATE	APPROVED BY	DATE	
DRAWN	J.R.M.	7-8-71	<i>[Signature]</i>	CITY ENGINEER
TRACED	R.E.B.	7-12-71	<i>[Signature]</i>	CITY ENGINEER
CHECKED	A.C.M.	7-19-71	<i>[Signature]</i>	ENGINEER OF RIGHT OF WAY
COMPALED	C.U.K.	1-23-73		
INDEXED				
REVISION	By	DATE	SECTION. 17509-2601 SHEET 6 OF	

SARASOTA-VENICE COMPANY'S RIVER SUBDIVISION
 FILED NOV. 6, 1920, P.B. 2, Pg. 48 (MANATEE CO. REC.)
 P.B. A, Pg. 71 (SARASOTA CO. REC.)

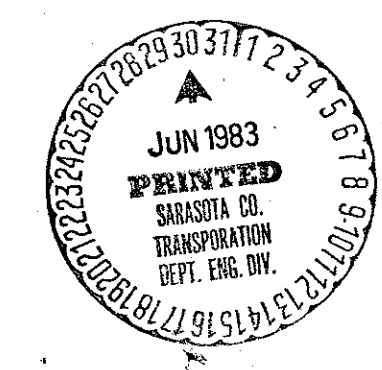
FED. ROAD DIV. No.	STATE	PROJECT No.	FISCAL YEAR	SHEET No.
3	FLA.	17509-2601		7



T375 ~ R18E

SCALE: 1" = 40'

INTERSECTION R/W



(F) INDICATES FIELD INFORMATION

STATE OF FLORIDA DEPARTMENT OF TRANSPORTATION			
RIGHT OF WAY MAP			
STATE ROAD No. 5-72A SARASOTA COUNTY			
DRAWN	BY	DATE	APPROVED BY
TRACED	R.E.B.	7-14-71	<i>Lawrence H. Craft</i>
CHECKED	A.CARRION	7-19-71	<i>Thomas C. Bass</i>
COMPARED	C.U.K.	1-23-73	
INDEXED			
REVISION	BY	DATE	

R/W Added Sta's L&R	MLO	3-19-75
REV. Sheet No.	B.A.L.	7-24-77