

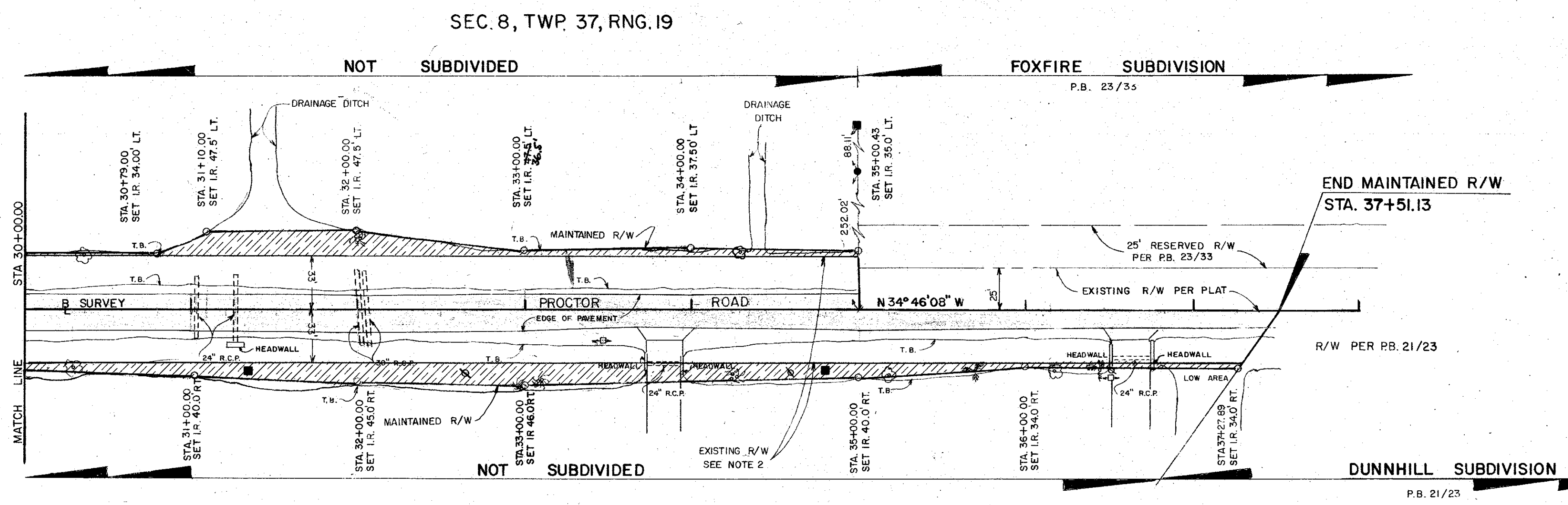
B SURVEY CURVE DATA
 $\Delta = 21^{\circ} 23' 25''$
 T = 211.94'
 C = 416.51'
 L = 418.04'
 R = 1122.17'
 CB = N 45° 27' 52\"/>

LEGEND OF ABBREVIATIONS

AVE. = AVENUE	COR. = CORNER	G.T.E. = GENERAL TELEPHONE	O.A. = OVER ALL	R.C.P. = REINFORCED CONCRETE PIPE	SW = SOUTHWEST
B. = BASELINE	D.B. = DEED BOOK	E. = ELECTRIC	O/E = OVERHEAD ELECTRIC	RD. = ROAD	T. = TANGENT
BLK. = BLOCK	D.N.R. = DEPARTMENT OF NATURAL RESOURCES	I.P. = IRON PIPE	O.R.B. = OFFICIAL RECORDS BOOK	REF. = REFERENCE	T.I.F. = TRUSTEES OF THE INTERNAL IMPROVEMENT FUND
BLVD. = BOULEVARD	D.O.T. = DEPARTMENT OF TRANSPORTATION	I.R. = IRON ROD	O.T. = ORDER OF TAKING	RESUB. = RESUBDIVISION	T.B. = TOP OF BANK
B.M. = BENCH MARK	DR. = DRIVE	L. = LENGTH	P.B. = PLAT BOOK	RNG. = RANGE	TWP. = TOWNSHIP
B.T.O.B. = BACK TOP OF BANK	DRAIN. = DRAINAGE	M.H.W.L. = MEAN HIGH WATER LINE	P.C. = POINT OF CURVATURE	R.P.B. = ROAD PLAT BOOK	U/E = UNDERGROUND ELECTRIC
C.B. = CONDOMINIUM BOOK	E. = EAST	MON. = MONUMENT	P.C.P. = PERMANENT CONTROL POINT	R.R. = RAILROAD	U.S. = UNITED STATES
C.C.C.L. = COASTAL CONSTRUCTION CONTROL LINE	EASE. = EASEMENT	M/R/W. = MAINTAINED RIGHT-OF-WAY	PG. = PAGE	R/W. = RIGHT-OF-WAY	VEG. = VEGETATION
CH. = CHORD	EP. = EDGE OF PAVEMENT	N. = NORTH	P.I. = POINT OF INTERSECTION	S. = SOUTH	W. = WEST
CHP. = CHAPTER	F.A.C. = FLORIDA ADMINISTRATION CODES & D.	F.B. = FIELD BOOK	P.L.S. = PROFESSIONAL LAND SURVEYOR	SEC. = SECTION	
CH. BRG. = CHORD BEARING	F.D.O.T. = FLORIDA DEPARTMENT OF TRANSPORTATION	F.L. = FOUND	P.M. = PERMANENT REFERENCE MONUMENT	S.F.D. = SARASOTA-FRUITVILLE DRAINAGE DISTRICT	
C.M. = CONCRETE MONUMENT	FL. = FLORIDA	F.P. & L. = FLORIDA POWER AND LIGHT	ST. = STREET	S.R. = STATE ROAD	
C.M.P. = CORRUGATED METAL PIPE	FND. = FOUND		STA. = STATION	SUB. = SUBDIVISION	
CO. = COUNTY	CONST. = CONSTRUCTION				
CONDO. = CONDOMINIUM					

LEGEND

- = NAIL & DISK SET
- = NAIL & DISK FND.
- = I.R. SET WITH RED CAP STAMPED COUNTY R/W P.L.S. 1867
- = I.R. FND.
- = R.R. SPIKE SET
- = R.R. SPIKE FND.
- △ = 1"x2" HUB SET
- ▲ = 1"x2" HUB FND.
- = CONC. MON. SET
- = CONC. MON. FND.
- ⊕ = WATER VALVE
- ⊙ = UTILITY POLE
- ⊗ = G.T. & TV CABLE BOX
- ⊘ = G.T. MANHOLE
- ⊙ = LIGHT POLE
- ⊙ = FIRE HYDRANT
- ⊙ = GUY WIRE
- ⊙ = PALM TREE
- ⊙ = OAK TREE
- ⊙ = WILLOW TREE
- T.S. = TOP OF BANK



SURVEYOR'S NOTES

1. BEARINGS SHOWN ARE BASE ON THE PLAT OF FOXFIRE SUBDIVISION RECORDED IN PLAT BOOK 23 PG. 33 BEING N 69° 48' 03\"/>
- 2. THERE HAS BEEN NO TITLE SEARCH MADE TO VERIFY THE FOLLOWING RESEARCH:
 - A. BOARD OF COUNTY COMMISSIONER MINUTE BOOK-1 (BCCMB-1), PAGE 404 OF JANUARY 14, 1924, 16 INDIVIDUALS PETITIONED THE BOARD TO APPOINT A VIEWING COMMITTEE TO DESIGNATE A ROUTE FOR A COUNTY ROAD CONNECTING THE FRUITVILLE HARD ROAD (PALMER BLVD.) WITH THE BEE RIDGE HARD ROAD (PROCTOR RD.).
 - B. MARCH 30, 1925; A PETITION WITH 35 SIGNATURES, DATED MARCH 14, 1925, WAS FILED WITH THE CLERK AND ADDRESSED TO THE BOARD REQUESTING THE SAME AS ABOVE AND FURTHER IDENTIFYING THE LIMITS AS CONNECTING THE PRESENT FRUITVILLE HARD ROAD AT OR NEAR THE BAPTIST CHURCH, WITH THE BEE RIDGE HARD ROAD AT OR NEAR TOM ALBRITTON'S GROVE, (NOT MENTIONED IN THE B.C.C. MINUTES).
 - C. MAY 4, 1925; BOARD ORDERED THE POSTING OF A PUBLIC NOTICE ADVISING THAT AT THE NEXT REGULAR MEETING ON MONDAY, JUNE 1, 1925, THEY WOULD DECLARE THE FOLLOWING A COUNTY ROAD:

BEGINNING AT THE 1/4 CORNER OF SECTIONS 6 AND 7, TOWNSHIP 37 S, RANGE 19 E, THENCE ALONG THE SECTION LINE 1/2 MILE TO THE CORNER OF SECTION 5, 6, 7 AND 8, TOWNSHIP 37 S, RANGE 19 E, THENCE BY THE MOST DIRECT AND FEASIBLE LINE TO THE MASON SURVEY OF OCTOBER, 1925, NEAR THE CORNER OF SECTIONS 15, 21 AND 22, TOWNSHIP 37 S, RANGE 19 E, THENCE ALONG THE LINE OF THE MASON SURVEY TO ITS INTERSECTION WITH THE TOWNSHIP LINE BETWEEN SECTION 36, TOWNSHIP 37 S, RANGE 20 E, AND SECTION 1, TOWNSHIP 38 S, RANGE 20 E, THENCE ALONG SAID TOWNSHIP LINE TO THE TOWNSHIP CORNER OF TOWNSHIP 37 AND 38 S, RANGES 20 AND 21 E, ABOUT 13.5 MILES IN LENGTH, INCREASING FROM 9 TO 16 FEET WIDTH OF HARD SURFACE WITH BITUMINOUS TOP WITH 24 FOOT GRADE AND 66 FOOT RIGHT OF WAY. (NOT MENTIONED IN B.C.C. MINUTES)
 - D. B.C.C.M.B. 2, PAGE 22 OF MAY 4, 1925; RESOLUTION PASSED CALLING FOR AN ELECTION ON JUNE 16, 1925, FOR COUNTY ROAD BONDS ON THE CONSTRUCTION OF 33 COUNTY ROADS, SUGAR BOWL ROAD (PROCTOR ROAD) BEING ROAD NO. 9 AT A COST OF \$ 100,000.00, WITH A R/W WIDTH OF 66 FEET.
 - E. MAY 5, 1925; PIONEERS APPOINTED TO MARK OUT THE ROAD FILED THEIR REPORT WITH THE CLERK AND BOARD DECLARING THE BEST ROUTE AS DESCRIBED ABOVE AND RECOMMENDED IT BE ESTABLISHED (NOT IN B.C.C. MINUTES).
 - F. B.C.C.M.B. 2, PAGE 29 OF JUNE 20, 1925; CANNVASED BOND ELECTION RESULTS WITH ROAD NO. 9 GETTING 275 VOTES FOR AND 41 AGAINST.
 - G. B.C.C.M.B. 2, PAGE 37 OF JULY 18, 1925; AUTHORIZED BOND ISSUANCE.
- 3. BASED ON THE FOREGOING, AN EXISTING 66' R/W HAS BEEN SHOWN.
- 4. A CHANGE OR JOB ON THE MAINTAINED RIGHT-OF-WAY LINE IS NOT NECESSARILY AT AN INTERSECTING PROPERTY LINE.
- 5. ALL UNDERGROUND FACILITIES NOT LOCATED.

SURVEYOR'S CERTIFICATE

I HEREBY CERTIFY THAT THIS R/W MAP REPRESENTS A BOUNDARY SURVEY OF THE ROAD AS SHOWN, THAT THE SURVEY WAS RECENTLY PERFORMED UNDER MY DIRECTION, AND THAT IT IS TRUE AND CORRECT TO THE BEST OF MY KNOWLEDGE AND BELIEF, AND THAT IT MEETS THE MINIMUM TECHNICAL STANDARDS FOR LAND SURVEYING IN THE STATE OF FLORIDA. (CH. 21 HH-6, F.A.C.)

DATE OF SURVEY: 2-25-88, MONUMENTS SET 5-9-89

THIS IS TO CERTIFY THAT THE NUMBERED SHEETS ONE (1) OF ONE (1) CONSTITUTES THE OFFICIAL MAINTENANCE MAP SHOWING THE LOCATION AND SURVEY BY THE SARASOTA COUNTY, FLORIDA, TRANSPORTATION DEPARTMENT FOR PROCTOR ROAD LYING BETWEEN CLARK ROAD AND FOXFIRE, DUNNHILL SUBDIVISION, ALL BEING IN SECTION 8 B 17, TOWNSHIP 37 S, RANGE 19 E, SARASOTA COUNTY, FLORIDA. THE PROPERTY SHOWN CROSS-HATCHED ON THIS MAP HAS BEEN VESTED IN SARASOTA COUNTY, FLORIDA, PURSUANT TO THE PROVISIONS OF CHAPTER 95.361, FLORIDA STATUTES OF 1991.

THIS IS TO CERTIFY THAT THIS MAINTAINED MAP WAS APPROVED BY RESOLUTION NO. 92-174 PASSED AND ADOPTED BY THE BOARD OF COUNTY COMMISSIONERS OF SARASOTA COUNTY, FLORIDA, ON THE 21 DAY OF July A.D. 1992.

BOARD OF COUNTY COMMISSIONERS OF SARASOTA COUNTY, FLORIDA BY:

[Signature]
 CHAIRMAN

ATTEST:
 KAREN E. RUSHING CLERK OF THE CIRCUIT COURT AND EX-OFFICIO CLERK OF THE BOARD OF COUNTY COMMISSIONERS OF SARASOTA COUNTY, FLORIDA BY:

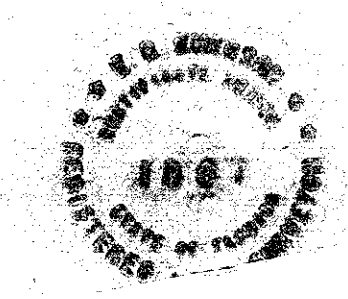
[Signature]
 DEPUTY CLERK

THIS IS TO CERTIFY THAT THE LIMITS OF THE ROADWAY OUTSIDE OF PLATTED RIGHT-OF-WAY AS SHOWN CROSS-HATCHED HEREON HAS BEEN MAINTAINED CONTINUOUSLY FOR OVER FOUR (4) YEARS WITHOUT INTERRUPTION.

[Signature]
 AREA SUPERINTENDENT
 HIGHWAY MAINTENANCE DIVISION

1-24-92
 DATE

[Signature]
 E.R. EMERSON COUNTY SURVEYOR
 PROFESSIONAL LAND SURVEYOR NO. 1867
 STATE OF FLORIDA
 1301 CATTLEMAN ROAD
 SARASOTA, FLORIDA 34232-9631



ACCEPTED FOR FILES AND RECORDED IN THE PUBLIC RECORDS OF SARASOTA COUNTY, FLORIDA THIS 4 DAY OF Aug. A.D. 1992.
 ROAD PLAT BOOK 3 PAGE 48

[Signature]
 CLERK OF THE CIRCUIT COURT
 SARASOTA COUNTY, FLORIDA

SARASOTA COUNTY TRANSPORTATION DEPARTMENT
 ENGINEERING DIVISION, CADASTRAL SECTION

MAINTAINED RIGHT OF WAY MAP

CURVE NORTH OF CLARK ROAD TO DUNNHILL SUBDIVISION

DRAWN	R KEANAN	4-8-88	DATE	1-24-92
CHECKED	<i>[Signature]</i>	1-23-92	DATE	1-24-92
COMPARED	<i>[Signature]</i>	1-23-92	DATE	1-24-92

SHEET 1 OF 1

RCC RFSO R92-174 ORB 2419 PG 2489