

SEE SHEET 2

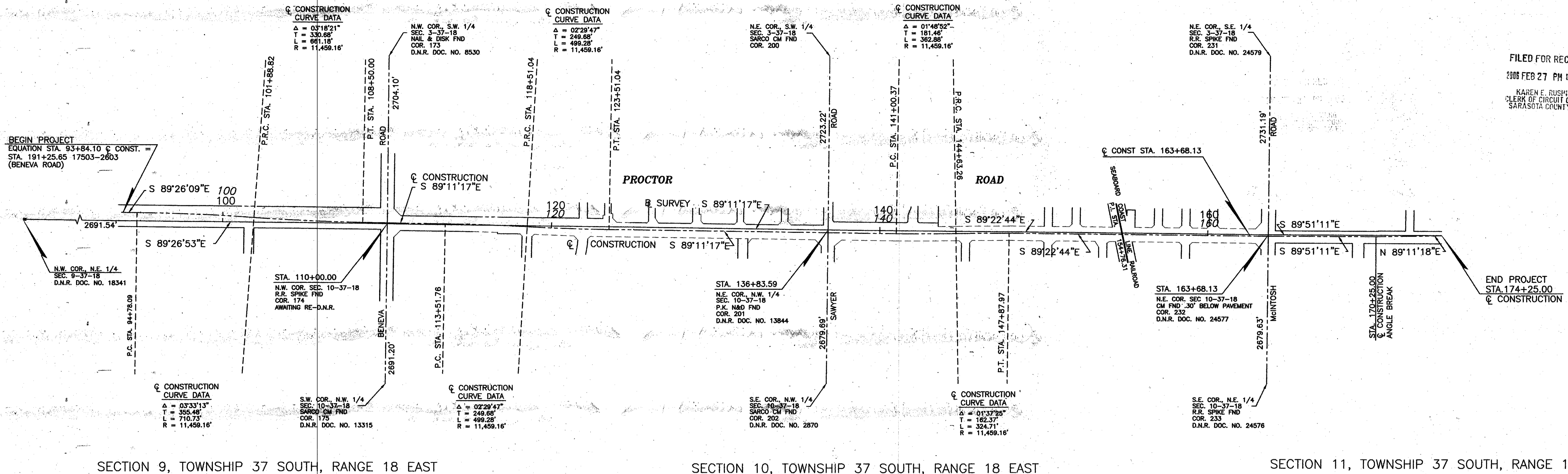
SEE SHEET 3

SEE SHEET 4

SECTION 4, TOWNSHIP 37 SOUTH, RANGE 18 EAST

SECTION 3, TOWNSHIP 37 SOUTH, RANGE 18 EAST

SECTION 2, TOWNSHIP 37 SOUTH, RANGE 18 EAST



FILED FOR RECORD
 2008 FEB 27 PM 4:08
 KAREN E. RUSHING
 CLERK OF CIRCUIT COURT
 SARASOTA COUNTY, FL

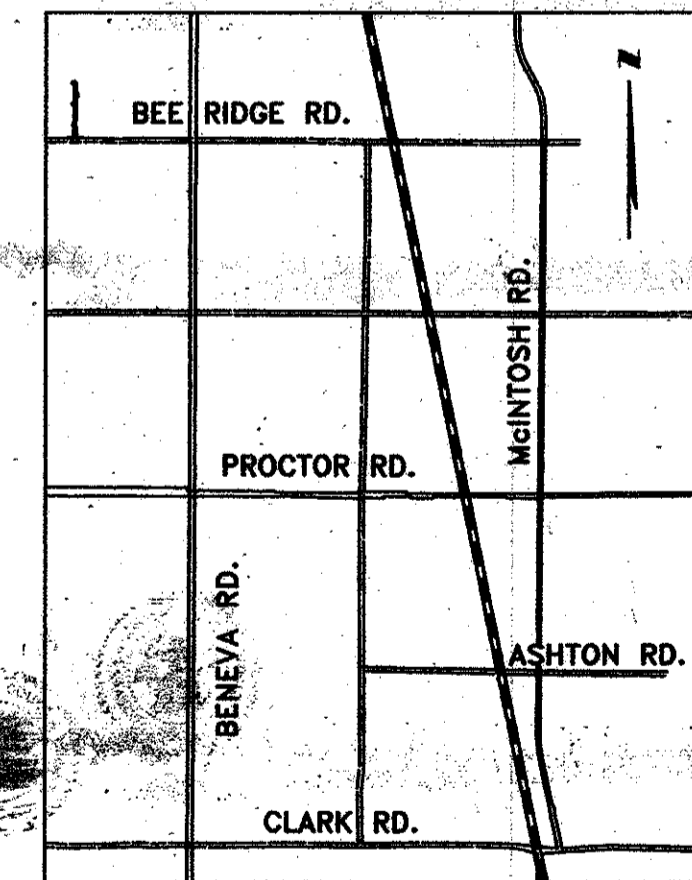
SECTION 9, TOWNSHIP 37 SOUTH, RANGE 18 EAST

SECTION 10, TOWNSHIP 37 SOUTH, RANGE 18 EAST

SECTION 11, TOWNSHIP 37 SOUTH, RANGE 18 EAST

LEGEND OF ABBREVIATIONS

- B = BASELINE
- B.M. = BENCH MARK
- B.T.O.B. = BACK TOP OF BANK
- C.B. = CONDOMINIUM BOOK
- C.C.C.L. = COASTAL CONSTRUCTION CONTROL LINE
- CH. = CHORD
- CHP. = CHAPTER
- CH. BRG. = CHORD BEARING
- C. = CENTERLINE
- C.M. = CONCRETE MONUMENT
- C.M.P. = CORRUGATED METAL PIPE
- CO. = COUNTY
- CONDO. = CONDOMINIUM
- CONST. = CONSTRUCTION
- COR. = CORNER
- D.B. = DEED BOOK
- D.D. = DATA DRAWER
- D.N.R. = DEPARTMENT OF NATURAL RESOURCES
- D.O.T. = DEPARTMENT OF TRANSPORTATION
- DRAIN. = DRAINAGE
- EASE. = EASEMENT
- F.A.C. = FLORIDA ADMINISTRATIVE CODE
- F.B. = FIELD BOOK
- F.D.O.T. = FLORIDA DEPARTMENT OF TRANSPORTATION
- FND. = FOUND
- F.N. = FILE NUMBER
- F.P. & L. = FLORIDA POWER AND LIGHT
- G.T.E. = GENERAL TELEPHONE ELECTRIC
- I.P. = IRON PIPE
- I.R. = IRON ROD
- L. = LENGTH
- L.B. = LICENSED BUSINESS
- M.H.W.L. = MEAN HIGH WATER LINE
- MON. = MONUMENT
- M/R/W. = MAINTAINED RIGHT-OF-WAY
- N. & D. = NAIL AND DISC
- N.G.V.D. = NATIONAL GEODETIC VERTICAL DATUM
- N.O.S. = NATIONAL OCEAN SERVICE
- O.A. = OVER ALL
- O/E = OVERHEAD ELECTRIC
- O.R.B. = OFFICIAL RECORDS BOOK
- O.T. = ORDER OF TAKING
- P.B. = PLAT BOOK
- P.C. = POINT OF CURVATURE
- P.C.P. = PERMANENT CONTROL POINT
- P.I. = POINT OF INTERSECTION
- P.L. = PROPERTY LINE
- P.L.S. = PROFESSIONAL LAND SURVEYOR
- P.R.C. = POINT OF REVERSE CURVE
- P.R.M. = PERMANENT REFERENCE MONUMENT
- P.T. = POINT OF TANGENCY
- R. = RADIUS
- R.C.P. = REINFORCED CONCRETE PIPE
- REF. = REFERENCE
- RESUB. = RESUBDIVISION
- RNG. = RANGE
- R.P.B. = ROAD PLAT BOOK
- R.R. = RAILROAD
- R/W. = RIGHT-OF-WAY
- SEC. = SECTION
- S.F.D.D. = SARASOTA-FRUITVILLE DRAINAGE DISTRICT
- S.R. = STATE ROAD
- STA. = STATION
- SUB. = SUBDIVISION
- T. = TANGENT
- T.I.J.F. = TRUSTEES OF THE INTERNAL IMPROVEMENT FUND
- TWP. = TOWNSHIP
- U/E = UNDERGROUND ELECTRIC
- VEG. = VEGETATION



LOCATION MAP NOT TO SCALE

SURVEY CERTIFICATION

I HEREBY CERTIFY THAT THIS RIGHT OF WAY CONTROL SURVEY WAS MADE FOR THE PURPOSE OF SURVEYING, REFERENCING, DESCRIBING AND MAPPING THE BASE LINE OF SURVEY AND PROPOSED RIGHT OF WAY LINES AS SHOWN AND DEPICTED HEREON AND THAT SAID SURVEY WAS DONE UNDER MY RESPONSIBLE CHARGE AND MEETS THE MINIMUM TECHNICAL STANDARDS SET FORTH BY THE FLORIDA BOARD OF PROFESSIONAL LAND SURVEYORS IN CHAPTER 21HH-6, FLORIDA ADMINISTRATIVE CODE, PURSUANT TO SECTION 472.027, FLORIDA STATUTES.

KAREN E. RUSHING
 CLERK OF THE CIRCUIT COURT
 SARASOTA COUNTY, FLORIDA
 BY: *[Signature]*
 DEPUTY CLERK

THIS DRAWING, CONSISTING OF SHEETS 1 OF 6 IS A TRUE, ACCURATE AND COMPLETE DEPICTION OF A FIELD SURVEY PERFORMED UNDER MY DIRECTION AND COMPLETED ON 6-12-89

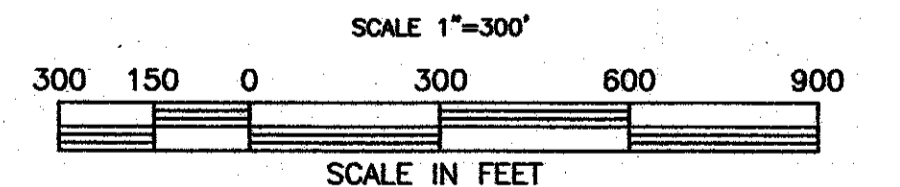
G.M. FOSNESS, ASSISTANT COUNTY SURVEYOR
 PROFESSIONAL LAND SURVEYOR NO. 4149
 STATE OF FLORIDA
 1301 CATTLEMEN ROAD
 SARASOTA, FLORIDA 34232-9631

SURVEYOR'S NOTES

- BEARINGS SHOWN ARE BASED ON THE CONSTRUCTION PLANS FOR PROCTOR ROAD (COUNTY PROJECT NO. 8816), PREPARED BY GLACE & RADCLIFFE, INC. JOB NO. 89520.
- TELEPHONE LINES, CABLES, AND POLES OWNED BY GENERAL TELEPHONE COMPANY. POWER POLES AND LINES OWNED BY FLORIDA POWER AND LIGHT COMPANY.
- ALL UNDERGROUND FACILITIES NOT LOCATED.
- RIGHT-OF-WAY MARKERS NOT INSTALLED.
- STATIONS & OFFSETS SHOWN HERE ON ARE FROM THE BASELINE OF SURVEY.

LEGEND

- = NAIL & DISK SET
- = NAIL & DISK FND.
- = REF NAIL & DISC
- = I.R. SET WITH RED CAP STAMPED COUNTY R/W PLS 1867
- = I.R. FND.
- ▲ = RAILROAD SPIKE FND.
- △ = HUB SET
- ▲ = HUB FND.
- = CONCRETE MONUMENT SET
- = CONCRETE MONUMENT FND.
- ⊠ = WATER VALVE
- ⊡ = UTILITY POLE
- ⊞ = G.T. & T.V. CABLE BOX
- = MANHOLE
- = TOP OF BANK
- = LIGHT POLE
- = FIRE HYDRANT
- = GUY WIRE
- = EDGE OF PAVEMENT
- = PALM TREE
- = OAK TREE
- = PINE TREE
- = R/W MARKER INSTALLED (SEE SURVEYOR'S NOTES)
- = AERIAL TARGET



KEY MAP

SARASOTA COUNTY TRANSPORTATION DEPARTMENT
 ENGINEERING DIVISION - SURVEY - MAPPING SECTION

RIGHT-OF-WAY CONTROL SURVEY

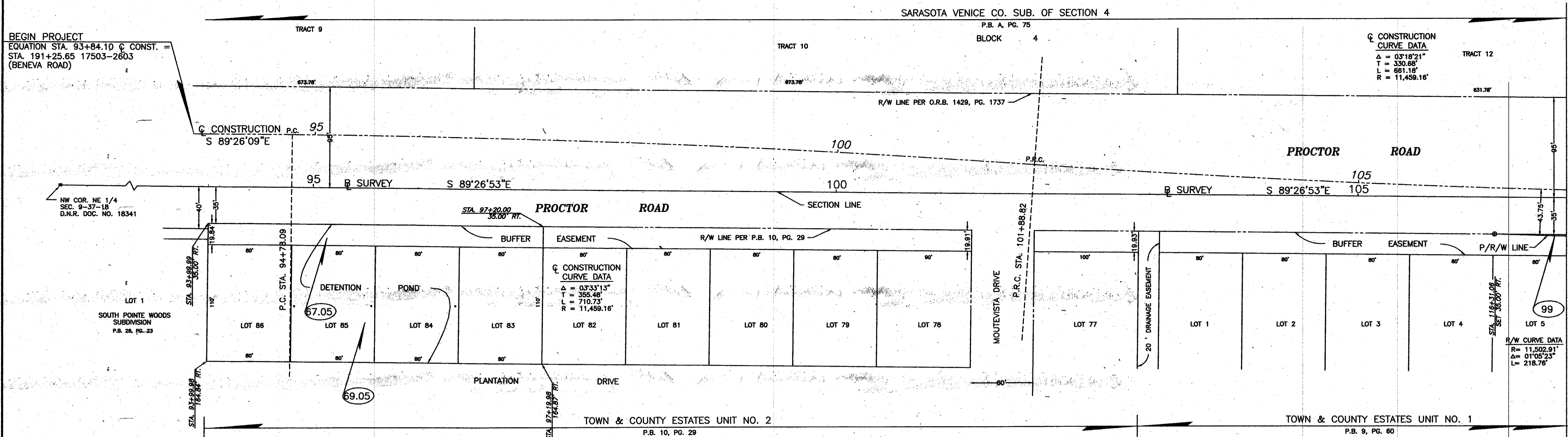
PROCTOR ROAD
 BENEVA ROAD TO MCINTOSH ROAD

BY	DATE
K. PETERS	6-3-93
CHECKED	
COMPARED	
REF. F.B. 250 PG. 30-70	
F.B. 323 PG. 55-66	
F.B. 335 PG. 47-60	

SCALE 1" = 300'

PROJECT NO. 88019 JOB NO. 8816 SHEET 1 OF 6

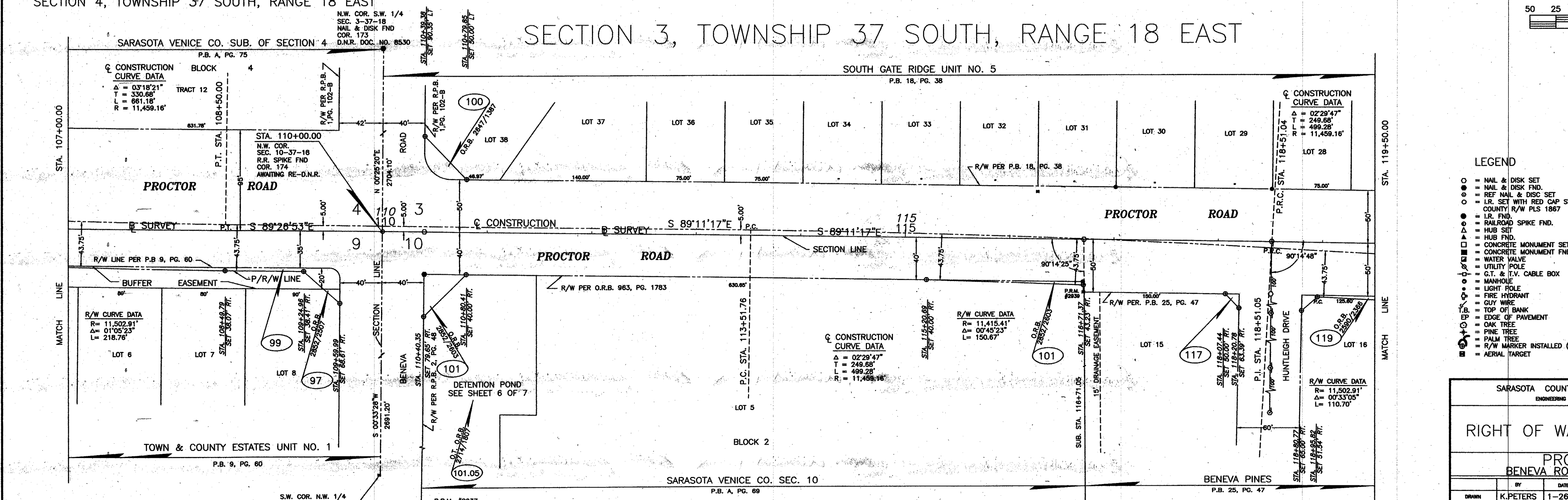
SECTION 4, TOWNSHIP 37 SOUTH, RANGE 18 EAST



SECTION 9, TOWNSHIP 37 SOUTH, RANGE 18 EAST

SECTION 4, TOWNSHIP 37 SOUTH, RANGE 18 EAST

SECTION 3, TOWNSHIP 37 SOUTH, RANGE 18 EAST



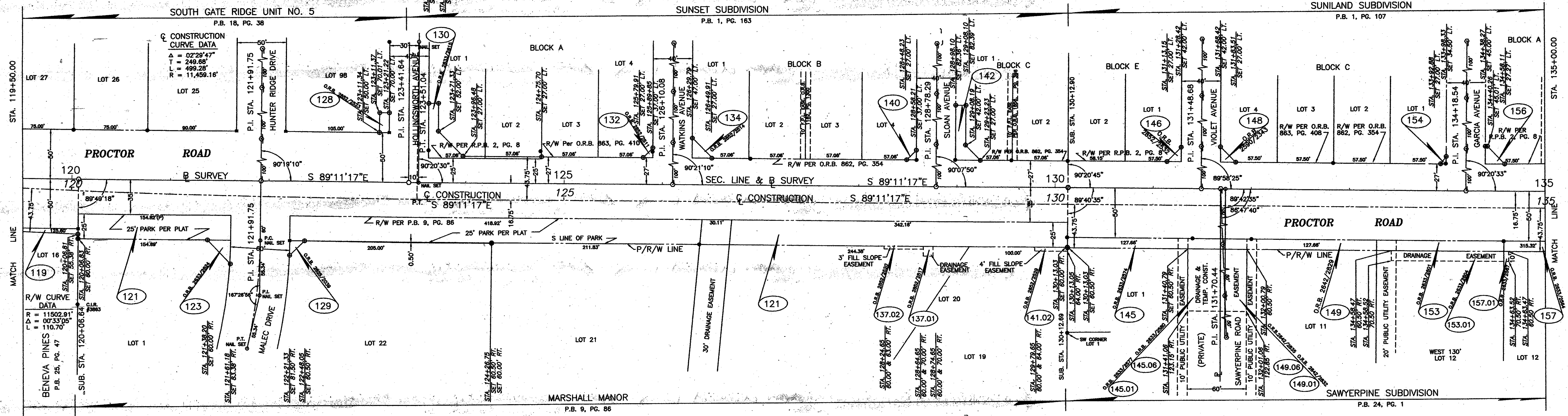
SECTION 10, TOWNSHIP 37 SOUTH, RANGE 18 EAST

SECTION 9, TOWNSHIP 37 SOUTH, RANGE 18 EAST

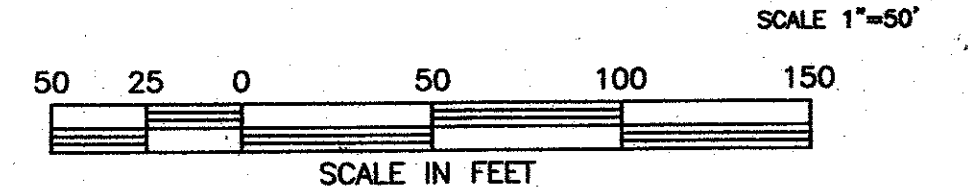
- LEGEND**
- = NAIL & DISK SET
 - = NAIL & DISK FND.
 - ◉ = REF. NAIL & DISK SET
 - ◐ = LR. SET WITH RED CAP STAMPED
 - ◑ = COUNTY R/W PLS 1887
 - = LR. FND.
 - △ = RAILROAD SPIKE FND.
 - = HUB SET
 - ◇ = HUB FND.
 - = CONCRETE MONUMENT SET
 - ▣ = CONCRETE MONUMENT FND.
 - ⊕ = WATER VALVE
 - ⊙ = UTILITY POLE
 - ⊚ = C.T. & T.V. CABLE BOX
 - ⊛ = MANHOLE
 - ⊜ = LIGHT POLE
 - ⊝ = FIRE HYDRANT
 - ⊞ = GUY WIRE
 - ⊟ = TOP OF BANK
 - ⊠ = EDGE OF PAVEMENT
 - ⊡ = OAK TREE
 - ⊢ = PINE TREE
 - ⊣ = PALM TREE
 - ⊤ = R/W MARKER INSTALLED (SEE SURVEYOR'S NOTES)
 - ⊥ = AERIAL TARGET

SARASOTA COUNTY TRANSPORTATION DEPARTMENT ENGINEERING DIVISION - SURVEY - MAPPING SECTION			
RIGHT OF WAY CONTROL SURVEY			
PROCTOR ROAD BENEVA ROAD TO MCINTOSH ROAD			
DRAWN	BY	DATE	 DATE: 2-21-93 DATE: 2-21-06 DATE:
CHECKED	K. PETERS	1-26-93	
COMPARED			
REF.			
SCALE	1"=50'	PROJECT NO.	88019
		JOB NO.	8816
		SHEET	2 OF 6

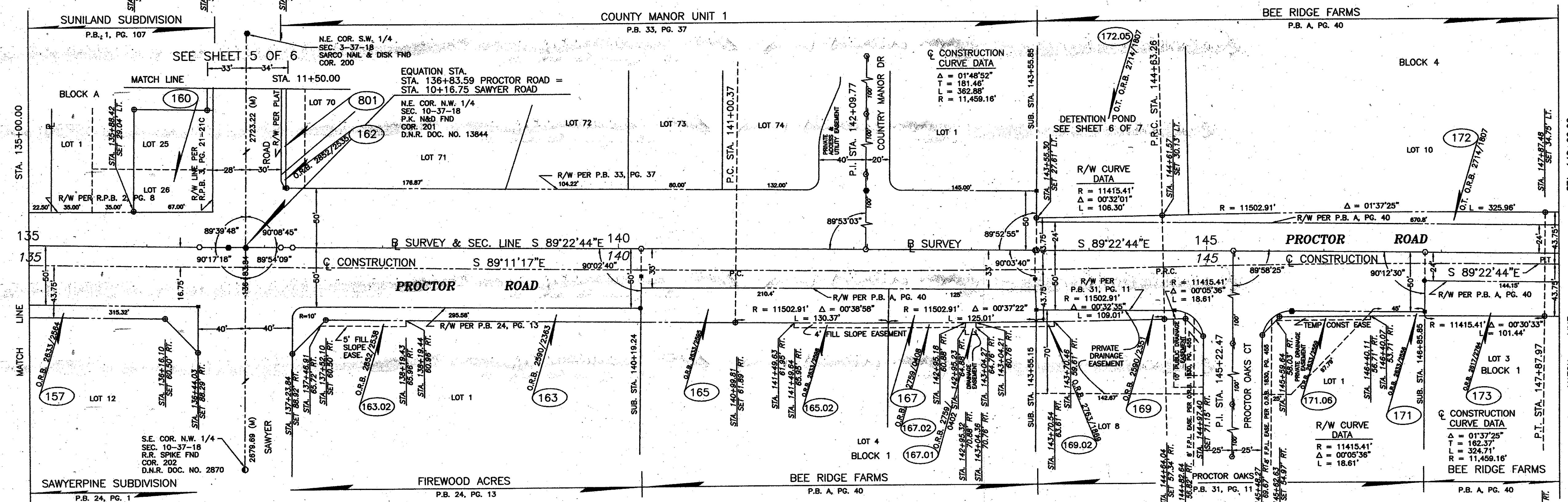
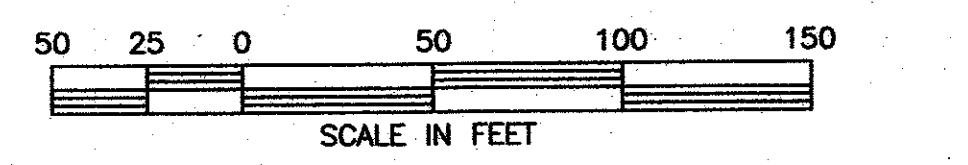
SECTION 3, TOWNSHIP 37 SOUTH, RANGE 18 EAST



SECTION 10, TOWNSHIP 37 SOUTH, RANGE 18 EAST



SECTION 3, TOWNSHIP 37 SOUTH, RANGE 18 EAST

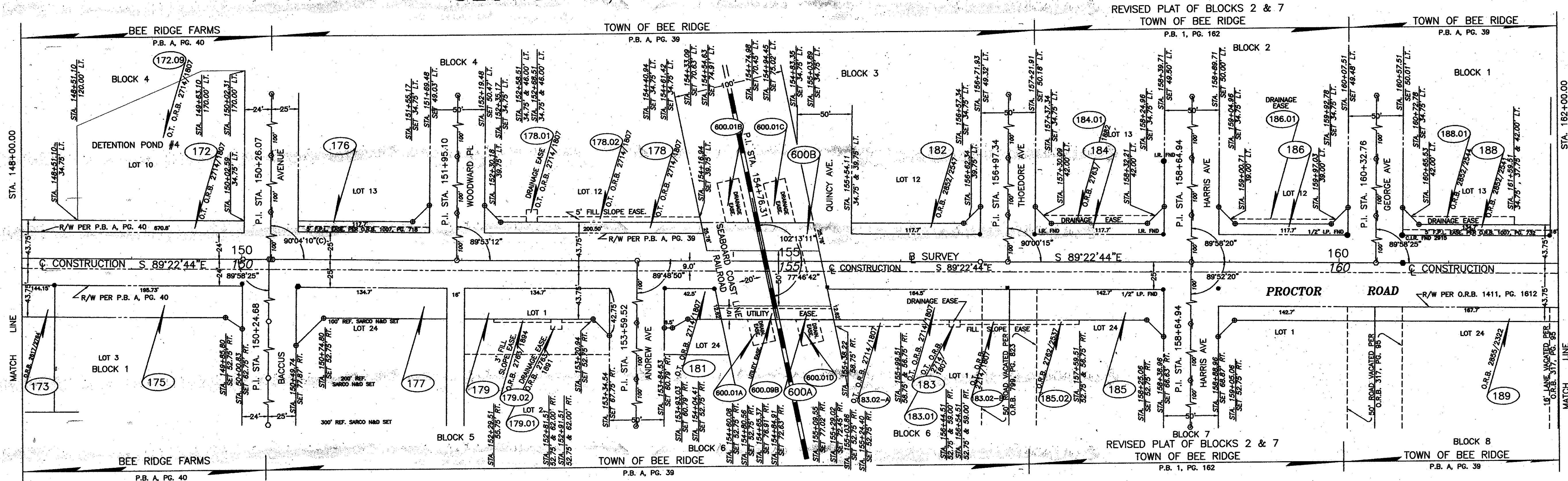


- LEGEND**
- = NAIL & DISK SET
 - = NAIL & DISK FND.
 - = REF NAIL & DISK SET
 - = I.R. SET WITH RED CAP STAMPED
 - = COUNTY R/W PLS 1867
 - = I.R. FND.
 - = RAILROAD SPIKE FND.
 - = HUB SET
 - = HUB FND.
 - = CONCRETE MONUMENT SET
 - = CONCRETE MONUMENT FND.
 - = WATER VALVE
 - = UTILITY POLE
 - = G.T. & T.V. CABLE BOX
 - = MANHOLE
 - = LIGHT POLE
 - = FIRE HYDRANT
 - = GUY WIRE
 - = TOP OF BANK
 - = EDGE OF PAVEMENT
 - = OAK TREE
 - = PINE TREE
 - = PALM TREE
 - = R/W MARKER INSTALLED (SEE SURVEYOR'S NOTES)
 - = AERIAL TARGET

SARASOTA COUNTY TRANSPORTATION DEPARTMENT ENGINEERING DIVISION - SURVEY - MAPPING SECTION			
RIGHT OF WAY CONTROL SURVEY			
PROCTOR ROAD BENEVA ROAD TO MCINTOSH ROAD			
BY	DATE	DATE	
K. PETERS	1-26-93	2-21-04	
CHECKED		DATE	
COMPIRED		DATE	
REF.		DATE	
SCALE	PROJECT NO.	JOB NO.	SHEET
1"=50'	88019	8816	3 OF 6

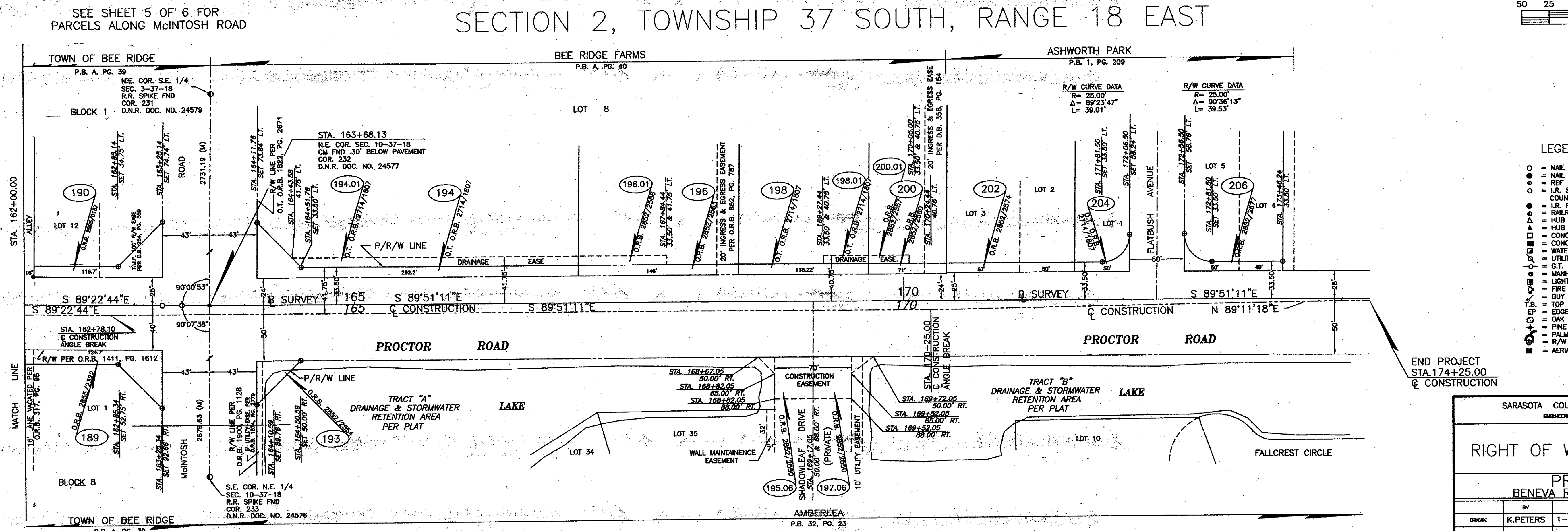
SECTION 10, TOWNSHIP 37 SOUTH, RANGE 18 EAST

SECTION 3, TOWNSHIP 37 SOUTH, RANGE 18 EAST



SECTION 10, TOWNSHIP 37 SOUTH, RANGE 18 EAST

SECTION 2, TOWNSHIP 37 SOUTH, RANGE 18 EAST

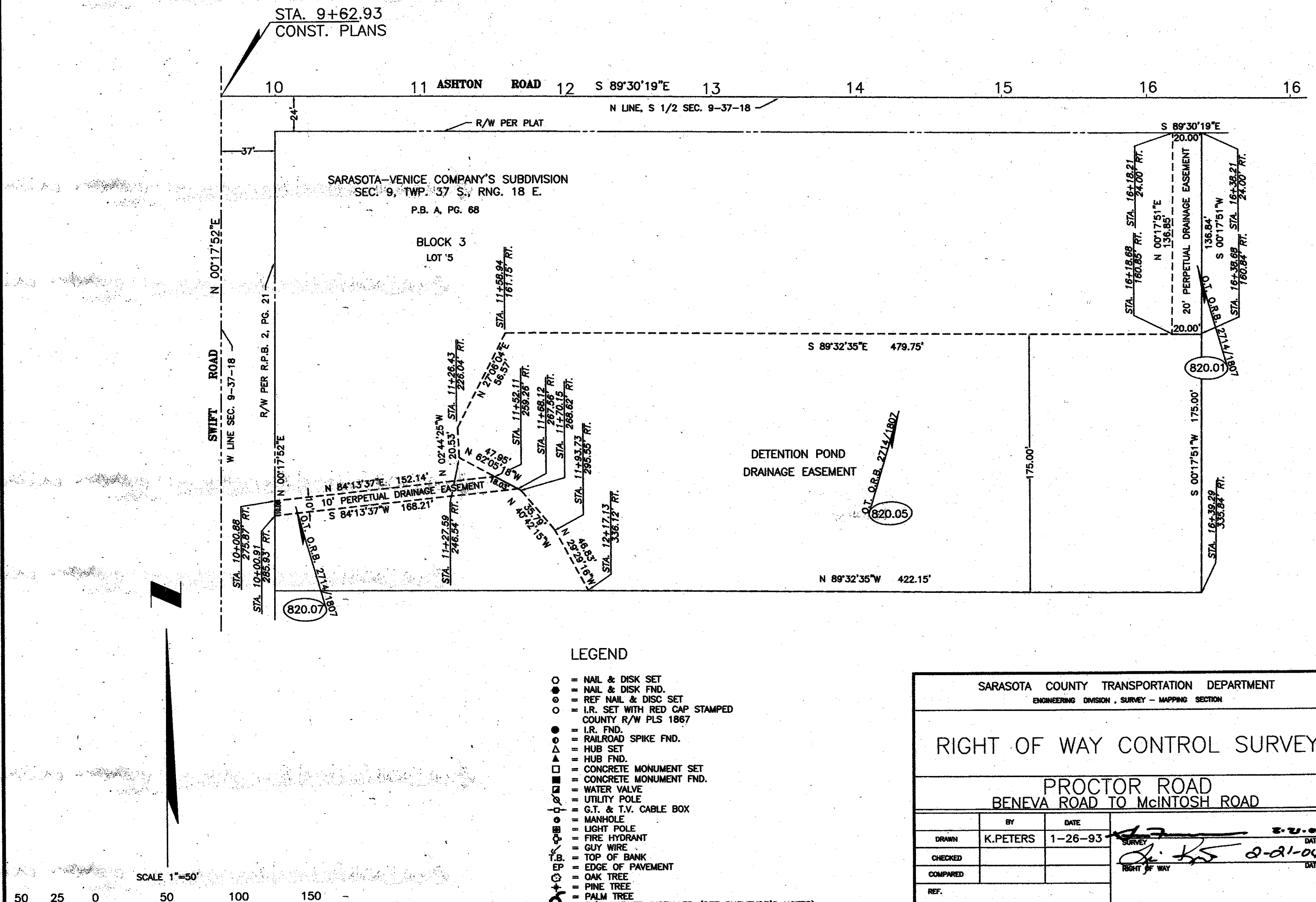
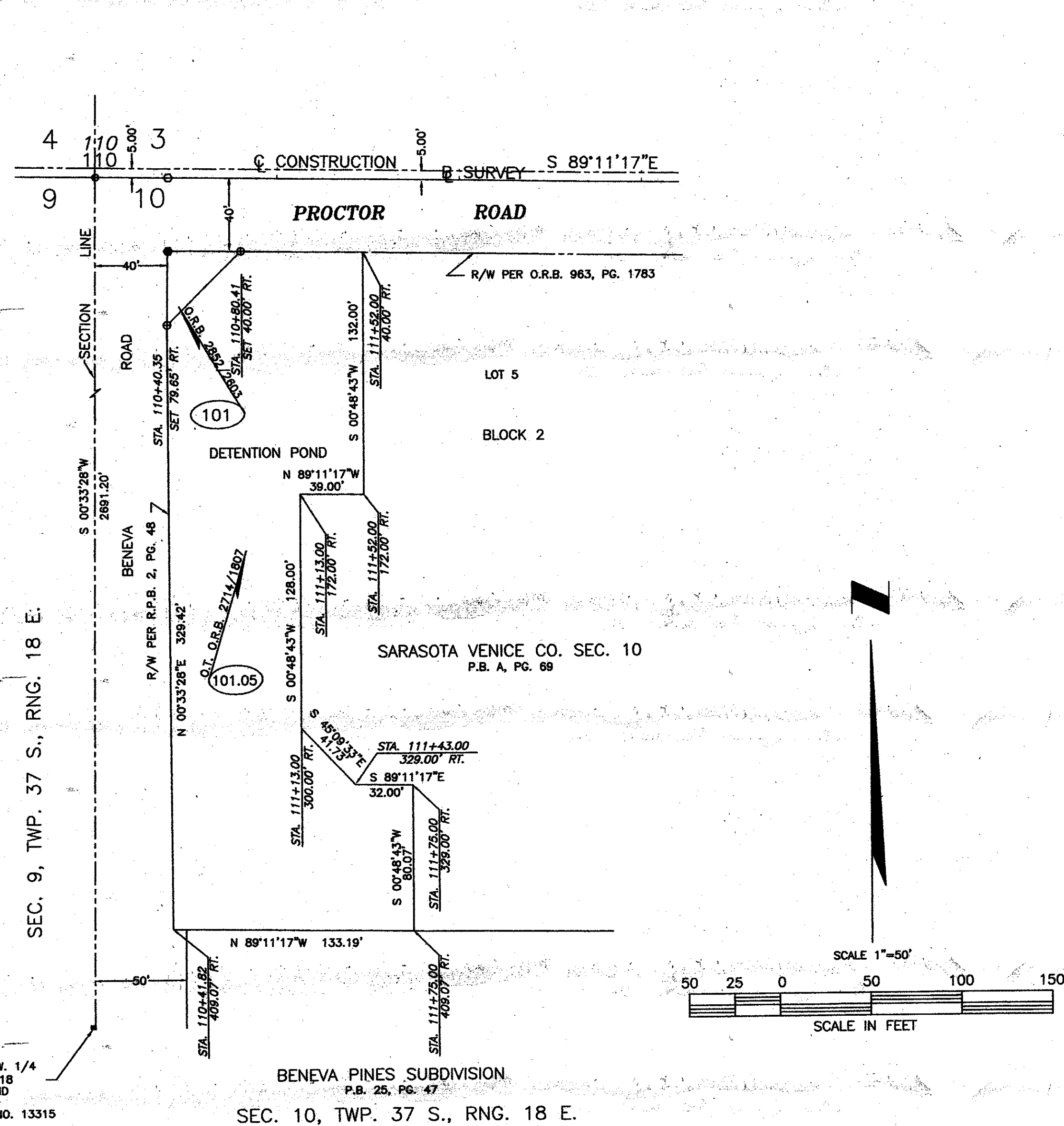
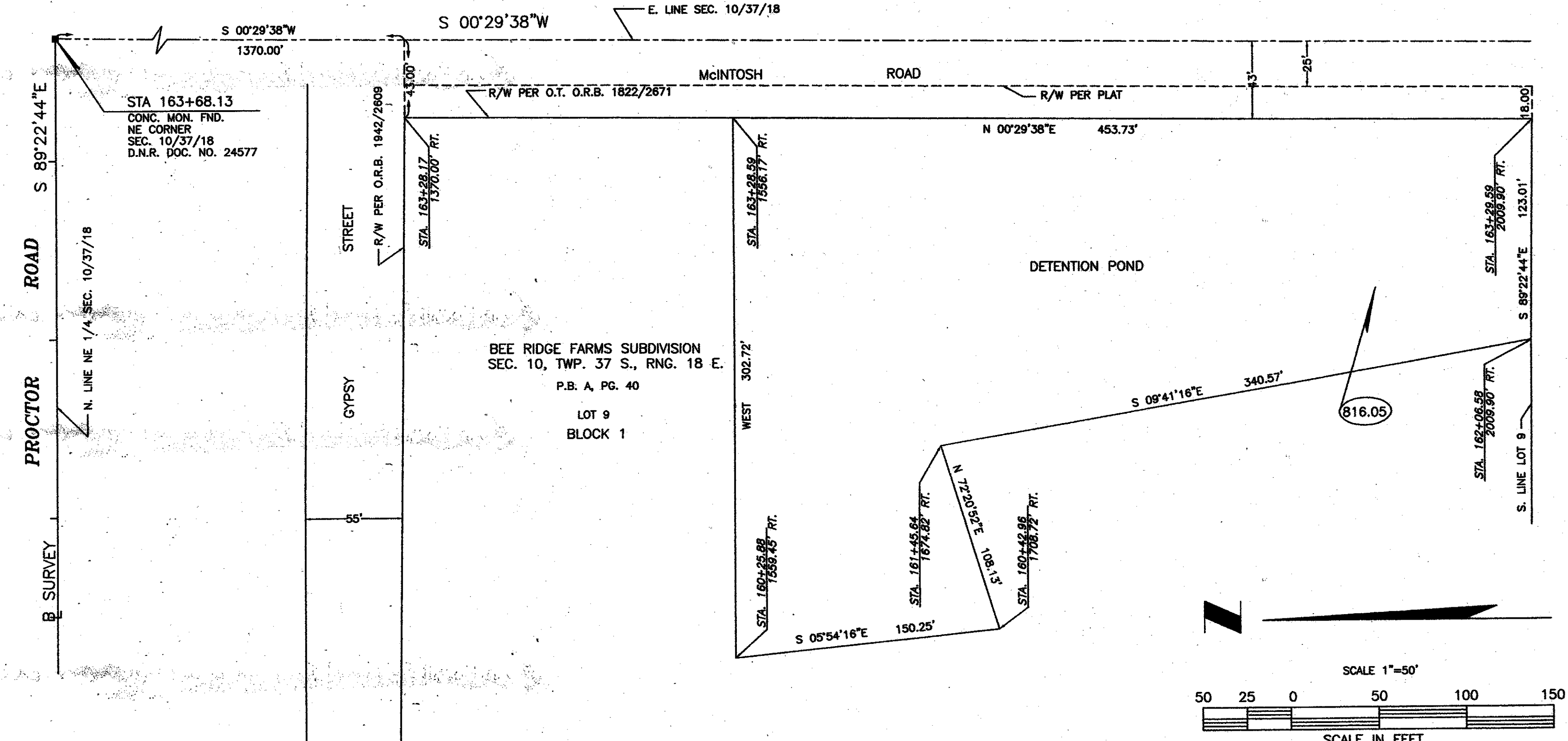
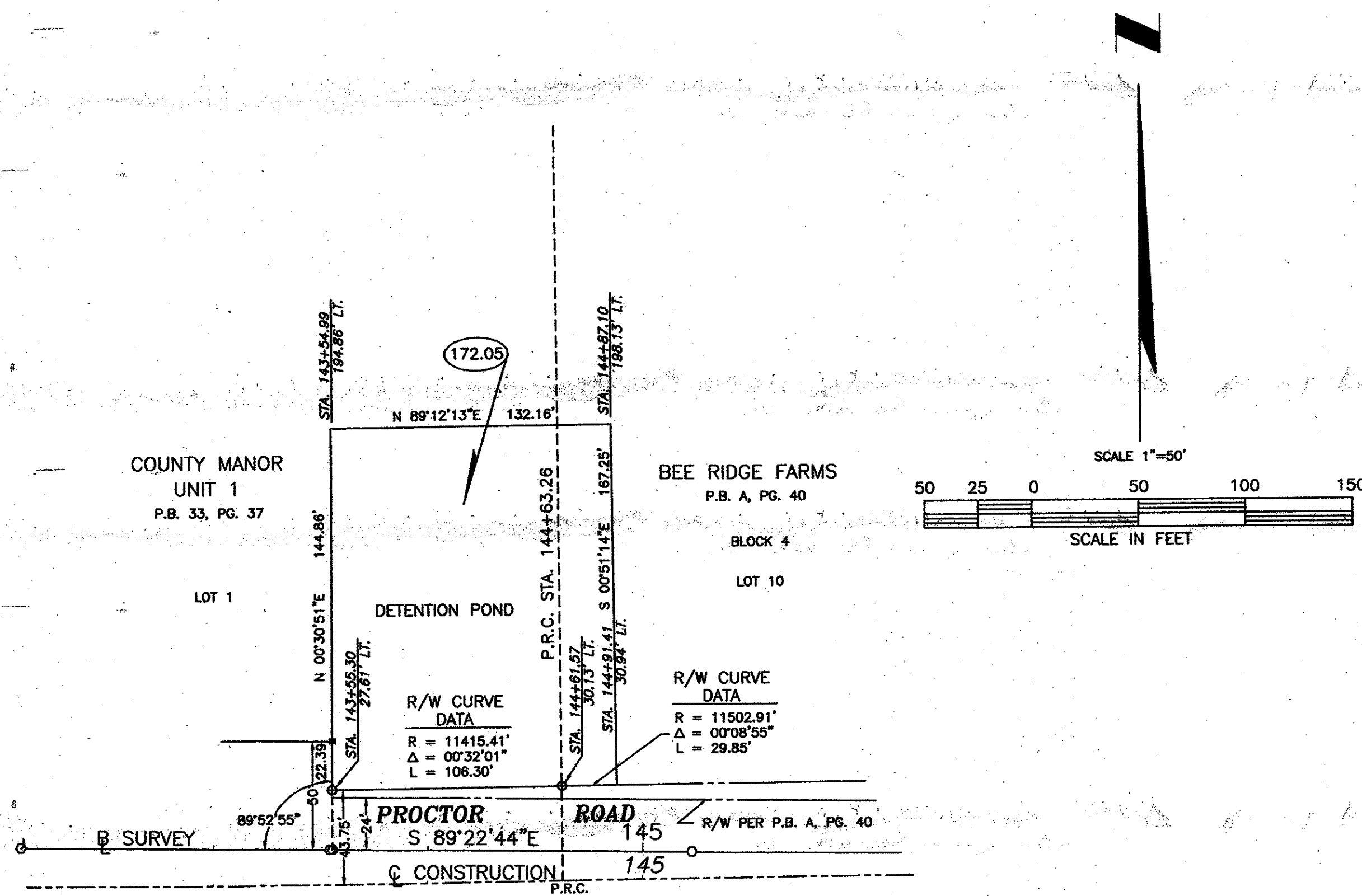


- LEGEND**
- = NAIL & DISK SET
 - = NAIL & DISK FND.
 - ⊙ = REF. NAIL & DISK SET
 - ⊙ = I.R. SET WITH RED CAP STAMPED COUNTY R/W PLS 1867
 - ⊙ = I.R. FND. RAILROAD SPIKE FND.
 - ⊙ = HUB SET
 - ⊙ = HUB FND.
 - ⊙ = CONCRETE MONUMENT SET
 - ⊙ = CONCRETE MONUMENT FND.
 - ⊙ = WATER VALVE
 - ⊙ = UTILITY POLE
 - ⊙ = G.T. & T.V. CABLE BOX
 - ⊙ = MANHOLE
 - ⊙ = LIGHT POLE
 - ⊙ = FIRE HYDRANT
 - ⊙ = GUY WIRE
 - ⊙ = TOP OF BANK
 - ⊙ = EDGE OF PAVEMENT
 - ⊙ = OAK TREE
 - ⊙ = PINE TREE
 - ⊙ = PALM TREE
 - ⊙ = R/W MARKER INSTALLED (SEE SURVEYOR'S NOTES)
 - ⊙ = AERIAL TARGET

SARASOTA COUNTY TRANSPORTATION DEPARTMENT	
ENGINEERING DIVISION - SURVEY - MAPPING SECTION	
RIGHT OF WAY CONTROL SURVEY	
PROCTOR ROAD BENEVA ROAD TO McINTOSH ROAD	
BY	DATE
K.PETERS	1-26-93
CHECKED	DATE
COMPIRED	DATE
REF.	DATE
SCALE	PROJECT NO.
1"=50'	88019
JOB NO.	SHEET
8816	4 of 6

SECTION 11, TOWNSHIP 37 SOUTH, RANGE 18 EAST

REVISIONS: CORRECTED R/W STA/OFFSET FOR PARCELS 179 & 181 T.S.O. 3-23-00



- LEGEND**
- = NAIL & DISK SET
 - = NAIL & DISK FND.
 - = REF. NAIL & DISK SET
 - = I.R. SET WITH RED CAP STAMPED COUNTY R/W PLS 1867
 - = I.R. FND.
 - = RAILROAD SPIKE FND.
 - = HUB SET
 - = HUB FND.
 - = CONCRETE MONUMENT SET
 - = CONCRETE MONUMENT FND.
 - = WATER VALVE
 - = UTILITY POLE
 - = G.T. & T.V. CABLE BOX
 - = MANHOLE
 - = LIGHT POLE
 - = FIRE HYDRANT
 - = CUY WIRE
 - = TOP OF BANK
 - = EDGE OF PAVEMENT
 - = OAK TREE
 - = PINE TREE
 - = PALM TREE
 - = I.R. W. MARKER INSTALLED (SEE SURVEYOR'S NOTES)
 - = AERIAL TARGET

SARASOTA COUNTY TRANSPORTATION DEPARTMENT
ENGINEERING DIVISION - SURVEY - MAPPING SECTION

RIGHT OF WAY CONTROL SURVEY
BENEVA PINES ROAD TO MCINTOSH ROAD

BY	DATE
K. PETERS	1-26-93
CHECKED	
COMPILED	
REF.	

SCALE 1"=50' PROJECT NO. 88019 JOB NO. 8816 SHEET 6 OF 6