

FED. ROAD DIV. No.	STATE	SEC. AND JOB No.	FISCAL YEAR	SHEET No.	TOTAL SHEETS
3	FLA.	1702-116		5	

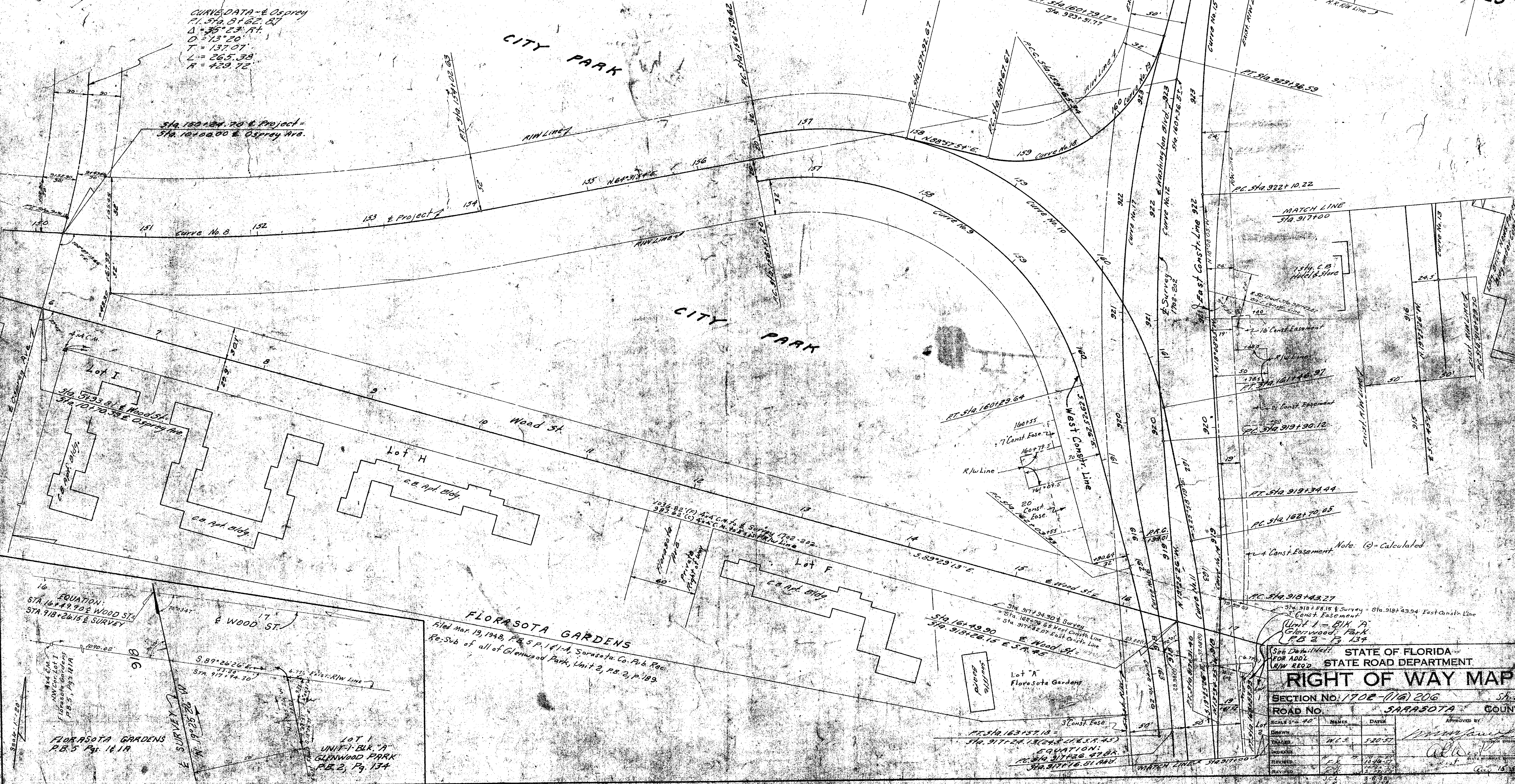
- CURVE No. 8**  
P.I. Sta. 150+37.08  
D = 26°02'47" Lt.  
T = 378.63'  
L = 744.13'  
R = 1637.02'
- CURVE No. 9**  
P.I. Sta. 158+06.38  
D = 86°32'40" Rt.  
T = 235.18'  
L = 378.44'  
R = 252.00'
- CURVE No. 10**  
P.I. Sta. 159+68.89  
D = 89°29'47" Rt.  
T = 309.27'  
L = 487.35'  
R = 312.00'
- CURVE No. 11**  
P.I. Sta. 163+27.05  
D = 6°32'53" Rt.  
T = 57.00'  
L = 113.88'  
R = 396.45'
- CURVE No. 12**  
P.I. Sta. 162+35.82  
D = 19°28'00" Rt.  
T = 245.70'  
L = 486.67'  
R = 1432.40'
- CURVE No. 13**  
P.I. Sta. 166+80.59  
D = 5°50'51" Rt.  
T = 50.89'  
L = 101.70'  
R = 396.45'
- CURVE No. 14**  
P.I. Sta. 161+88.88  
D = 4°53'30" Lt.  
T = 45.61'  
L = 91.17'  
R = 1145.92'
- CURVE No. 15**  
P.I. Sta. 162+60.27  
D = 18°40'39" Lt.  
T = 190.05'  
L = 297.59'  
R = 238.00'
- CURVE No. 16**  
P.I. Sta. 161+05.52  
D = 7°05'17" Lt.  
T = 88.91'  
L = 171.20'  
R = 1432.40'
- CURVE No. 17**  
P.I. Sta. 161+19.35  
D = 26°23'17" Rt.  
T = 225.34'  
L = 442.58'  
R = 354.23'
- CURVE No. 18**  
P.I. Sta. 159+13.67  
D = 48°39'50" Lt.  
T = 52.00'  
L = 97.87'  
R = 113.00'
- CURVE No. 19**  
P.I. Sta. 160+24.72  
D = 40°15'30" Lt.  
T = 59.38'  
L = 113.83'  
R = 162.00'
- CURVE No. 20**  
P.I. Sta. 162+80.45  
D = 10°00' Rt.  
T = 77.12'  
L = 153.85'  
R = 881.47'

**CURVE DATA - E. Osprey**  
P.I. Sta. 81+62.87  
D = 35°23' Rt.  
T = 137.07'  
L = 265.38'  
R = 429.72'

TWP. 36 S. - RGE. 18 E.

CITY PARK

CITY PARK



**FLORASOTA GARDENS**  
Filed Mar. 19, 1948, P.B. 5 P. 141-A, Sarasota Co. Pub. Rec.  
Re-Sub of all of Glenwood Park, Unit 2, P.B. 2, p. 189

STATE OF FLORIDA  
STATE ROAD DEPARTMENT

**RIGHT OF WAY MAP**

SECTION No. 1702-116 206 SH. 5  
ROAD No. SARASOTA COUNTY

SCALE 1" = 40'

APPROVED BY: *[Signature]*

DATE: 5-20-57

DESIGNED BY: W.C.S.

DRAWN BY: [Name]

CHECKED BY: [Name]

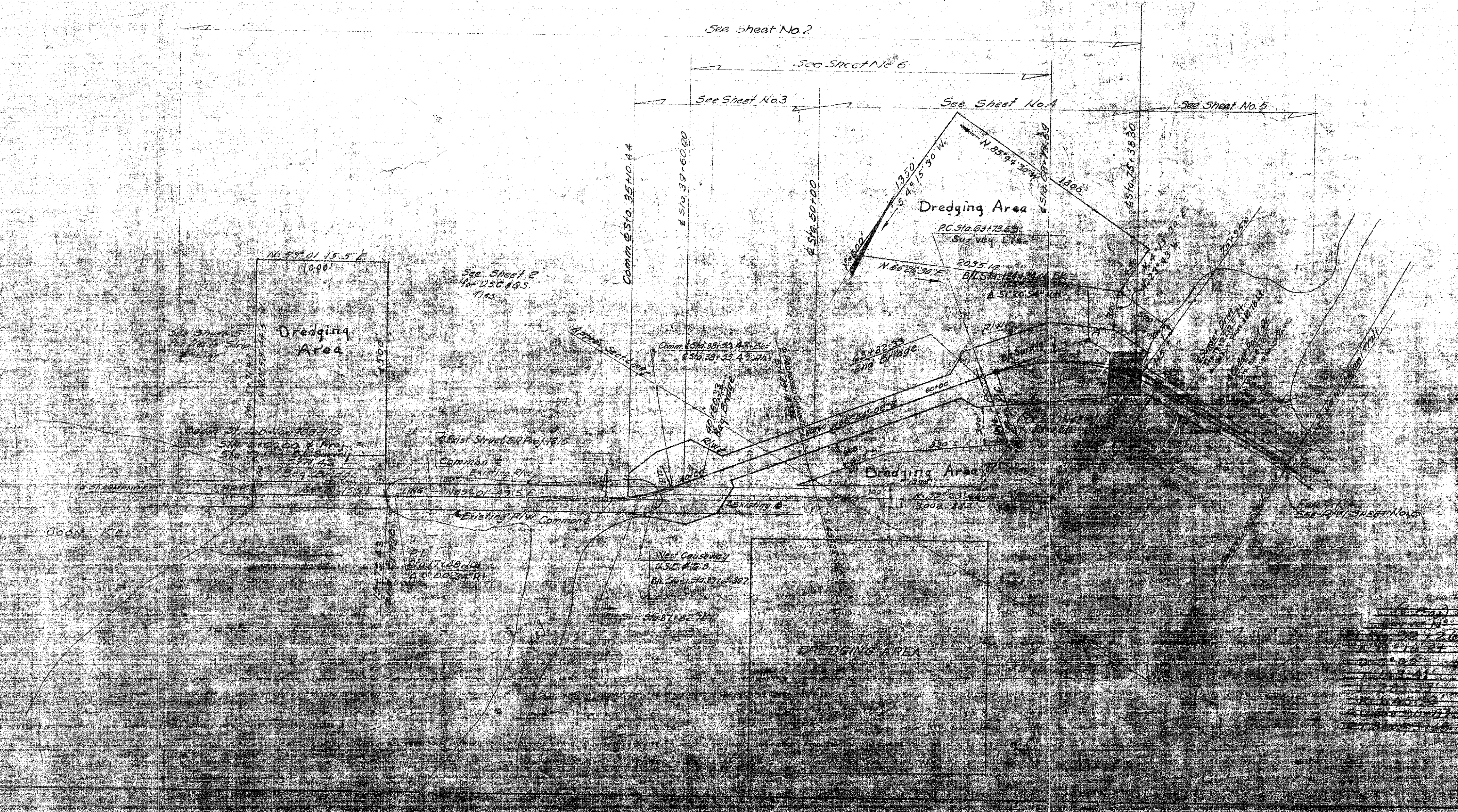
REVISIONS:

NO.	DATE	DESCRIPTION
1	5-20-57	AS SHOWN
2	5-20-57	AS SHOWN
3	5-20-57	AS SHOWN

FED. ROAD DIV. NO.	STATE PROJECT NO.	FISCAL YEAR	SHEET NO.
5	FLA. 1703-175		1

**RIW WIDTHS REQUIRED**

STA 35+10.44 to STA 36+53.49	TRANSITION 189.42' to 300' Lt
STA 35+10.44 to STA 38+55.49	TRANSITION 110.58' to 300' Rt
STA 38+55.49 to STA 41+05.58	300' Lt, 300' Rt
STA 41+05.58 to STA 43+00	TRANSITION 300' to 100' Lt
STA 41+05.58 to STA 43+00	TRANSITION 300' to 158.66' to 100' Rt
STA 43+00 to STA 61+50	100' Lt, 100' Rt
STA 61+50 to STA 65+00	TRANSITION 100' to 230' Lt
STA 63+00 to STA 69+00	TRANSITION 230' to 310' Lt
STA 61+50 to STA 62+50	TRANSITION 310' to 205' Lt
STA 62+50 to STA 65+19	TRANSITION 100' to 210' Lt
STA 65+19 to STA 65+19	TRANSITION 205' to 255' Lt
STA 65+19 to STA 65+30	TRANSITION 255' to 170.67' Lt
STA 65+30 to STA 65+30	TRANSITION 255' to 190' Lt
STA 65+30 to STA 73+30	TRANSITION 70.58' to 91.67' Lt
STA 73+30 to STA 81+84	TRANSITION 91.67' to 91.07' Lt
STA 73+30 to STA 81+84	TRANSITION 93.60' to 118.00' Lt
STA 81+84 to STA 81+84	TRANSITION 118.00' to 118.13' Lt
STA 81+84 to STA 83+43.58	TRANSITION 118.83' to 83.32' Rt
STA 83+43.58 to STA 85+43.49	TRANSITION 83.32' to 46.56' Rt
STA 85+43.49 to STA 88+198.80	TRANSITION 46.56' to 38(5) Rt



**CURVE DATA**

PT STA 35+10.44	PT STA 35+10.44	Curve No. 1 Project
PI STA 35+10.44	PI STA 35+10.44	PI STA 35+10.44
Δ = 20° 17' 47.5"	Δ = 20° 17' 47.5"	Δ = 20° 17' 47.5"
D = 4' 15' 00"	D = 4' 15' 00"	D = 4' 15' 00"
T = 241.38'	T = 241.38'	T = 241.38'
L = 607.416'	L = 607.416'	L = 607.416'
R = 1348.136'	R = 1348.136'	R = 1348.136'
PT STA 35+10.44	PT STA 35+10.44	PT STA 35+10.44
PT STA 35+10.44	PT STA 35+10.44	PT STA 35+10.44
Curve No. 2	Curve No. 3	Curve No. 4
PI STA 61+50	PI STA 73+30	PI STA 81+84
Δ = 29° 44' 42.5"	Δ = 21° 36' 12"	Δ = 5° 00' 00"
D = 6' 00' 00"	D = 5' 00' 00"	D = 5' 00' 00"
T = 507.19'	T = 182.19'	T = 182.19'
L = 991.50'	L = 360.00'	L = 360.00'
R = 995.96'	R = 95.95'	R = 95.95'
PT STA 61+50	PT STA 73+30	PT STA 81+84
PT STA 61+50	PT STA 73+30	PT STA 81+84

**KEY MAP**

STATE OF FLORIDA  
STATE ROAD DEPARTMENT

**RIGHT OF WAY MAP**

SECTION NO. 1703-175  
ROAD NO. 790

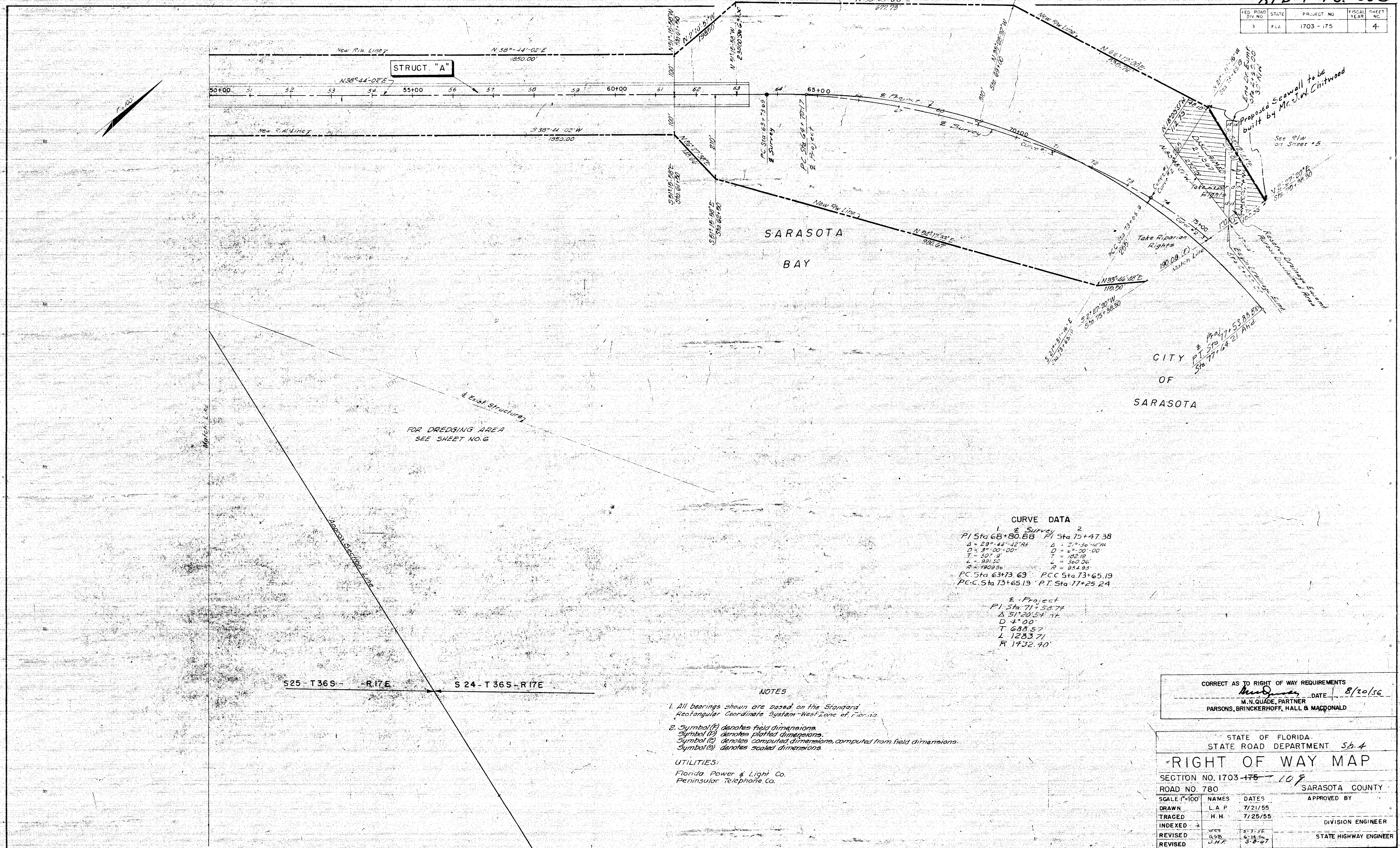
SARASOTA COUNTY

DATE: 1/25/74

APPROVED BY: [Signature]

SCALE: AS SHOWN

FED. ROAD DIST. NO.	STATE	PROJECT NO.	FISCAL YEAR	SHEET NO.
3	FLA.	1703-175		4



**CURVE DATA**

1	2
E. Survey P.I. Sta 68+80.88 $\Delta = 23^{\circ} 44' 42''$ $D = 37' 00''$ $T = 507.9'$ $L = 931.50'$ $R = 1809.36'$	P.I. Sta 75+47.38 $\Delta = 2^{\circ} 30' 42''$ $D = 6^{\circ} 00' 00''$ $T = 82.19'$ $L = 360.06'$ $R = 854.93'$
P.C. Sta 63+73.63 P.C.C. Sta 73+65.19	P.T. Sta 73+65.19 P.T. Sta 77+25.24

E. Project P.I. Sta 71+53.74 $\Delta = 51^{\circ} 20' 54''$ $D = 4^{\circ} 00'$ $T = 688.57'$ $L = 1283.71'$ $R = 1732.40'$
---

S25-T36S-R17E      S24-T36S-R17E

- NOTES**
- All bearings shown are based on the Standard Rectangular Coordinate System - West Zone of Florida.
  - Symbol (F) denotes field dimensions.  
 Symbol (P) denotes plotted dimensions.  
 Symbol (C) denotes computed dimensions, computed from field dimensions.  
 Symbol (S) denotes scaled dimensions.
- UTILITIES:**  
 Florida Power & Light Co.  
 Peninsular Telephone Co.

CORRECT AS TO RIGHT OF WAY REQUIREMENTS  
 M.N. QUADE, PARTNER  
 PARSONS, BRINCKERHOFF, HALL & MACDONALD  
 DATE 8/20/56

STATE OF FLORIDA  
 STATE ROAD DEPARTMENT Sh. 4

**RIGHT OF WAY MAP**

SECTION NO. 1703-175-10  
 ROAD NO. 780 SARASOTA COUNTY

SCALE 1"=100'	NAMES	DATES	APPROVED BY
DRAWN	L. A. P.	7/21/55	DIVISION ENGINEER
TRACED	H. H.	7/25/55	
INDEXED	WES	5-7-56	STATE HIGHWAY ENGINEER
REVISED	S.S.R.	5-18-57	