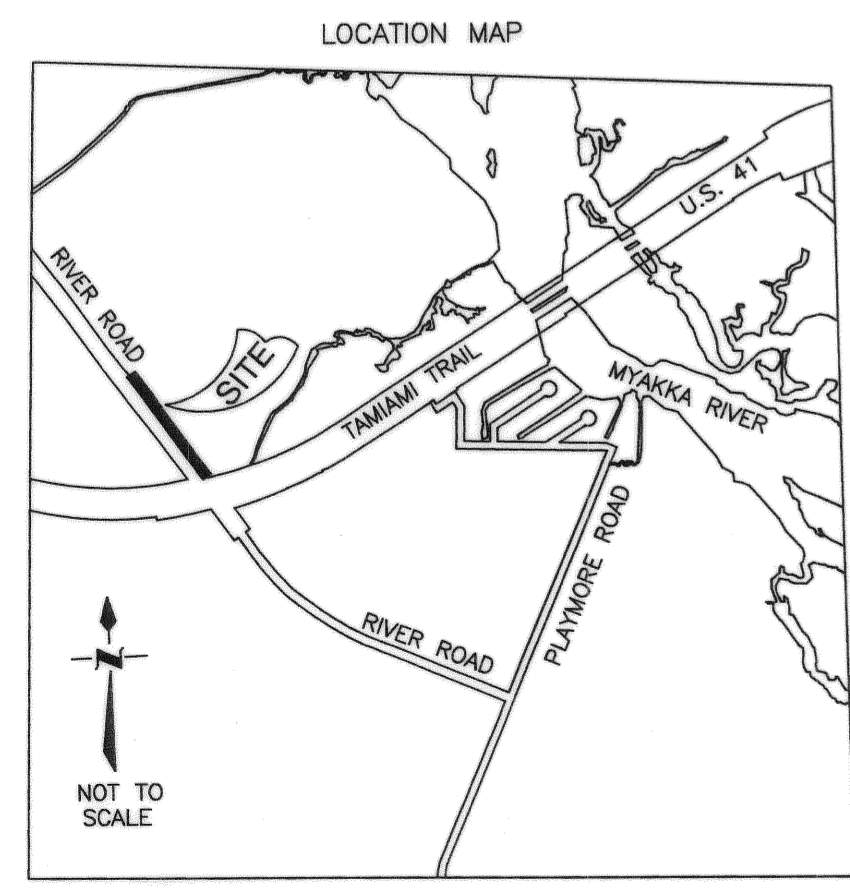
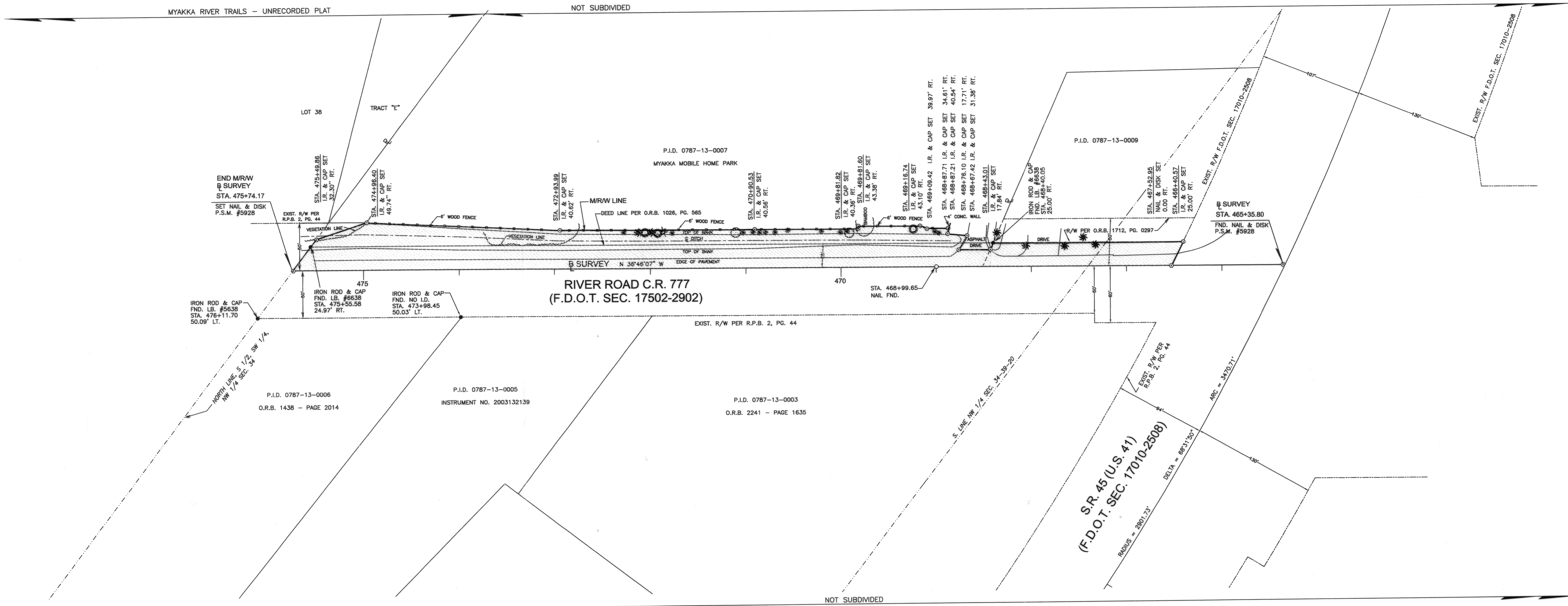
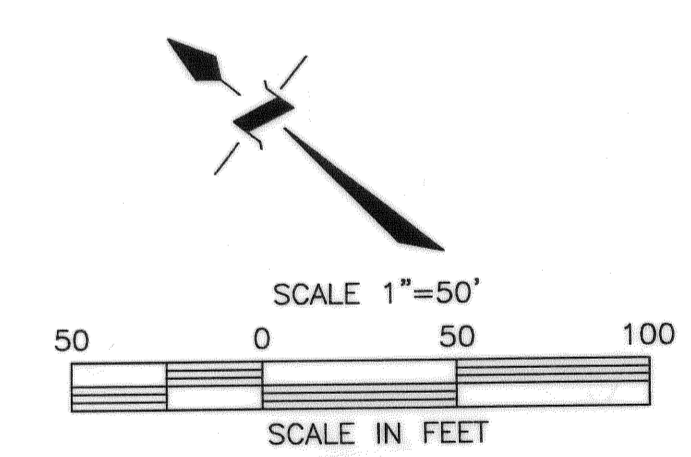


SECTION 34, TOWNSHIP 39 SOUTH, RANGE 20 EAST



SEC. 34, TWP. 39 S., RNG. 20 E.



THIS IS TO CERTIFY THAT THE NUMBERED SHEET ONE (1) OF ONE (1) CONSTITUTES THE OFFICIAL MAINTENANCE MAP SHOWING THE LOCATION AND SURVEY BY SARASOTA COUNTY, FLORIDA DEVELOPMENT SERVICES BUSINESS CENTER FOR RIVER ROAD, FROM U.S. 41 (TAMAMI TRAIL) 1050 FEET LYING IN SECTION 34, TOWNSHIP 39 SOUTH, RANGE 20 EAST, SARASOTA COUNTY, FLORIDA PURSUANT TO THE PROVISIONS OF CHAPTER 95.361, FLORIDA STATUTES OF 2011.

FILED OR RECORD IN ROAD PLAT BOOK 4 AT PAGE 72 OF THE PUBLIC RECORDS OF SARASOTA COUNTY, FLORIDA, THIS DAY OF 2011.

[Signature]
LIN KURANT, MANAGER
REAL PROPERTY

[Signature]
JAMES R. HARRIOTT JR., P.E.
COUNTY ENGINEER

KAREN E. RUSHING
CLERK OF THE CIRCUIT COURT
SARASOTA COUNTY, FLORIDA

[Signature]
DEPUTY CLERK

THIS IS TO CERTIFY THAT THIS MAINTAINED MAP WAS APPROVED BY RESOLUTION NO. 2011-060 PASSED AND ADOPTED BY THE BOARD OF COUNTY COMMISSIONERS OF SARASOTA COUNTY, FLORIDA, ON THE 9th DAY OF MARCH, 2011.

[Signature]
CHAIRMAN

ATTEST:
KAREN E. RUSHING, CLERK OF THE CIRCUIT COURT AND EX-OFFICIO CLERK OF THE BOARD OF COUNTY COMMISSIONERS OF SARASOTA COUNTY, FLORIDA BY:

DEPUTY CLERK
THIS IS TO CERTIFY THAT THE LIMITS OF THE ROADWAY OUTSIDE OF PLATTED RIGHT-OF-WAY AS SHOWN CROSS-HATCHED HEREON, HAS BEEN MAINTAINED CONTINUOUSLY FOR OVER SEVEN (7) YEARS WITHOUT INTERRUPTION.

[Signature] 9 MAR 2011
GARY SPRAGGINS, MANAGER
ROAD & BRIDGE

SURVEYOR'S NOTES

1. BEARINGS AND DISTANCES SHOWN HEREON ARE GRID, BASED ON PUBLISHED COORDINATES FOR SARASOTA COUNTY CONTINUOUS OPERATING REFERENCE STATION "EMERSON" AND "ANDERSON" RELATIVE TO THE FLORIDA STATE PLANE COORDINATE SYSTEM, WEST ZONE, BASED ON NORTH AMERICAN DATUM, 1983 ADJUSTMENT.
2. THIS MAP WAS PREPARED WITHOUT THE BENEFIT OF AN ABSTRACT OF TITLE OR AN ATTORNEY'S OPINION OF TITLE, THEREOF, ANY DEED OVERLAP OR HULLUS OR ANY RECORDED OR UNRECORDED RIGHTS-OF-WAY AND OR EASEMENTS MAY NOT BE SHOWN.
3. IMPROVEMENTS SUCH AS, BUT NOT LIMITED TO, UNDERGROUND UTILITIES, LANDSCAPE FEATURES, ECT., HAVE NOT BEEN LOCATED EXCEPT AS SHOWN.
4. A CHANGE OR JOB ON THE MAINTAINED RIGHT-OF-WAY LINE IS NOT NECESSARILY LOCATED AT AN INTERSECTING PROPERTY LINE.

ANY REPRODUCTION OF THIS MAP SHALL NOT BE "CERTIFIED A TRUE COPY" WITHOUT MY SIGNATURE AND DATE THEREOF IN INK, TOGETHER WITH MY EMBOSSED SEAL ON SAID COPY.

I HEREBY CERTIFY THAT THIS MAINTAINED RIGHT-OF-WAY MAP (SHEET 1 OF 1) REPRESENTS A SURVEY OF THE MAINTAINED ROAD LIMITS AS SHOWN HEREON, THAT THE SURVEY WAS RECENTLY PERFORMED UNDER MY DIRECTION, THAT IT IS TRUE AND CORRECT TO THE BEST OF MY KNOWLEDGE AND BELIEF AND THAT THE SURVEY MEETS THE MINIMUM TECHNICAL STANDARDS AS SET FORTH BY THE FLORIDA BOARD OF PROFESSIONAL LAND SURVEYORS IN CHAPTER 61017, FLORIDA ADMINISTRATIVE CODE, PURSUANT TO SECTION 472.027, FLORIDA STATUTES.

[Signature] 3.9.11
TERI S. OWEN, Professional Surveyor and Mapper No. 5928

ABBREVIATION		LEGEND	
P.B. = PLAT BOOK	P.I.D. = PROPERTY IDENTIFICATION	NAD = NAIL AND DISK	LP = IRON PIPE
CONC. = CONCRETE	N.C.P. = REINFORCED CONCRETE PIPE	IR. = IRON ROD	IR. & DISK FOUND
MON. = MONUMENT	C.M.P. = CORRUGATED METAL PIPE	E.P. = EDGE OF PAVEMENT	CHISEL CUT FOUND
R/W = RIGHT-OF-WAY	FND. = FOUND	DR. = DRIVE	RAILROAD SPIKE FOUND
(P) = PLAT	T.O.S. = TOP OF SURFACE	U/G = UNDERGROUND	5/8" IRON ROD & CAP SET P.S.M. 5928
(M) = MEASURED	GT. = OPEN TRENCH	DR. = DRAIN	
PC = PAGE	FL. = FLORIDA POWER & LIGHT	TEMP. = TEMPORARY	
R.P.B. = ROAD PLAT BOOK	VER. = VERIZON	BASE = EASEMENT	
O.R.B. = OFFICIAL RECORDS BOOK	OVN = CABLE TELEVISION	R = RADIUS	

SYMBOL LEGEND	
○ - NAIL & DISK SET PSM #5928	■ - CONCRETE MONUMENT FOUND
● - NAIL & DISK FOUND	□ - IRON ROD & CAP FOUND
○ - CHISEL CUT FOUND	● - IRON ROD FOUND
○ - RAILROAD SPIKE FOUND	○ - 5/8" IRON ROD & CAP SET P.S.M. 5928
○ - IRON PIPE FND.	
○ - BUSH	○ - OAK TREE
○ - PALM TREE	○ - PINE TREE
○ - TREE (TYPE UNKNOWN)	

MAINTAINED RIGHT-OF-WAY MAP RIVER ROAD U.S. 41 NORTH 1050 FEET	PROJ. NO.: 10106 SEC: 34 TWP: 39 S. RGE: 20 E. FIELD BOOK 514, PG. 12-16 & 53 I:\SURVEY\DEC_RW_MAP\M_R_W_MAP.DWG	DWG DATE: 2-23-11 FIELD DATE: 3-2-11 DRAWN BY: T.O. CHECKED BY: W.P.	SHEET NO. 1 of 1
--	---	---	---------------------------

SARASOTA COUNTY SURVEY-MAPPING
 PLANNING & DEVELOPMENT SERVICES BUSINESS CENTER
 1001 SARASOTA CENTER BOULEVARD SARASOTA, FLORIDA 34240
 941/861-6802 * 941/861-6865 * FAX 941/861-6431

B.C.C. RESO. NO. 2011-060 O.R.I.