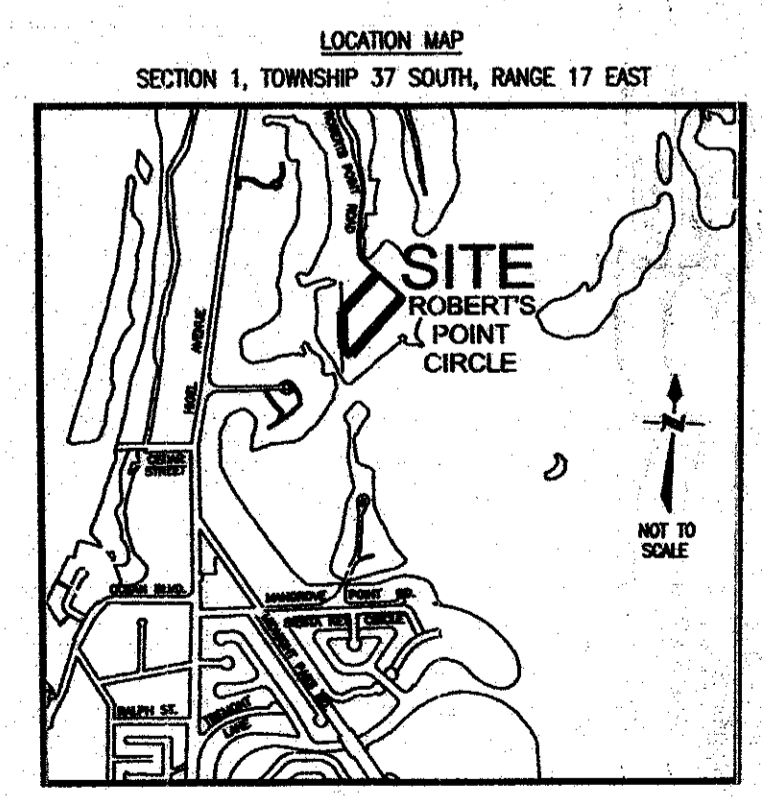
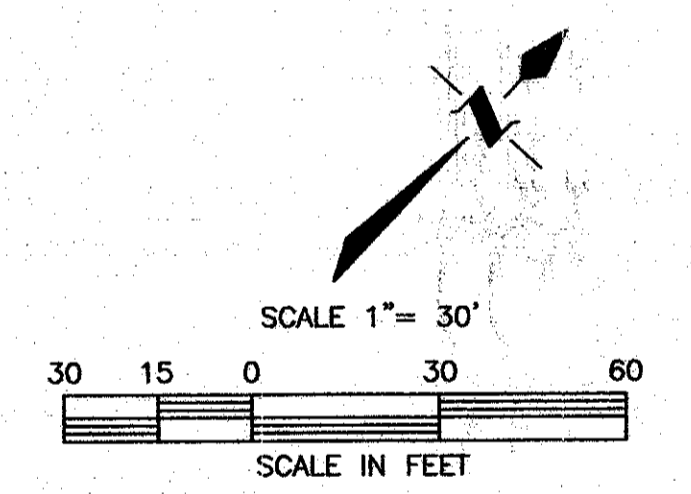
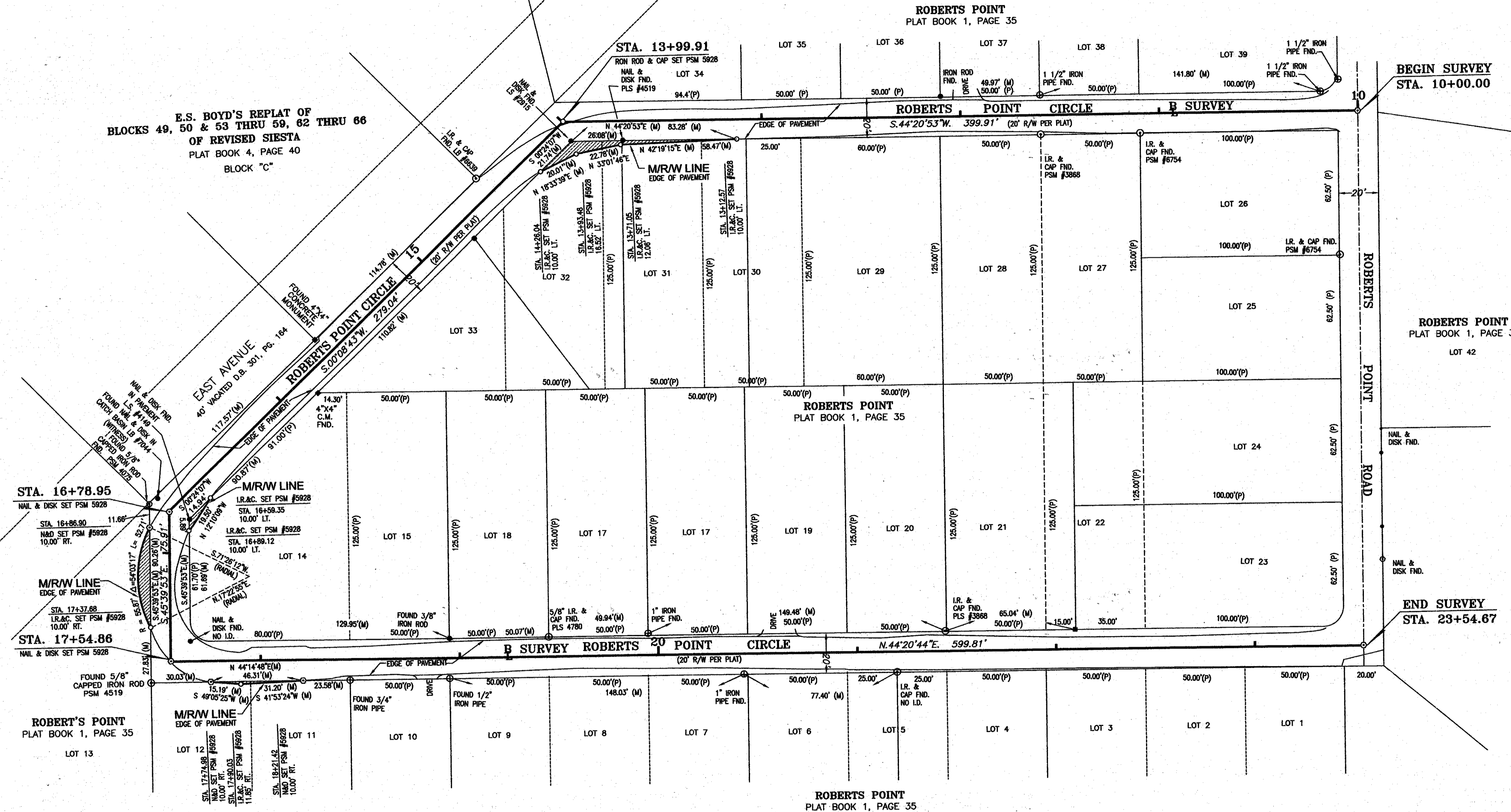


FILED FOR RECORD  
2008 AUG 13 PM 1:40  
KAREN E. RUSHING  
CLERK OF CIRCUIT COURT  
SARASOTA COUNTY, FL.



THIS IS TO CERTIFY THAT THE NUMBERED SHEET ONE (1) OF ONE (1) CONSTITUTES THE OFFICIAL MAINTENANCE MAP SHOWING THE LOCATION AND SURVEY BY SARASOTA COUNTY, FLORIDA. DEVELOPMENT SERVICES BUSINESS CENTER FOR SHANNON ROAD, LYING SOUTH OF FRUITVILLE ROAD, BEING IN SECTION 20, TOWNSHIP 36 SOUTH, RANGE 18 EAST, SARASOTA COUNTY, FLORIDA PURSUANT TO THE PROVISIONS OF CHAPTER 95.361, FLORIDA STATUTES OF 2007.

2008 -  
THIS IS TO CERTIFY THAT THIS MAINTAINED MAP WAS APPROVED BY RESOLUTION NO. 2008-145 PASSED AND ADOPTED BY THE BOARD OF COUNTY COMMISSIONERS OF SARASOTA COUNTY, FLORIDA, ON THE 13th DAY OF AUGUST, 2008.  
*Karen E. Rushing*  
CLERK

- SURVEYOR'S NOTES**
1. BEARINGS SHOWN HEREON ARE BASED ON ASSUMED DATUM, THE EAST LINE OF LOT 13, ROBERTS POINT SUBDIVISION, RECORDED IN PLAT BOOK 1, PAGE 35 OF THE PUBLIC RECORDS OF SARASOTA COUNTY, FLORIDA BEING S 45°39'53\"/>

*James K. Harriott Jr.*  
LIN KURANT, MANAGER  
REAL PROPERTY  
JAMES K. HARRIOTT JR., P.E.  
COUNTY ENGINEER

KAREN E. RUSHING  
CLERK OF THE CIRCUIT COURT  
SARASOTA COUNTY, FLORIDA  
BY: *Gary Spaggiari*  
DEPUTY CLERK

DEPUTY CLERK  
THIS IS TO CERTIFY THAT THE LIMITS OF THE ROADWAY OUTSIDE OF PLATTED RIGHT-OF-WAY AS SHOWN CROSS-HATCHED HEREON, HAS BEEN MAINTAINED FOR THE IMMEDIATE PAST SEVEN (7) YEARS WITHOUT INTERRUPTION.  
*Gary Spaggiari*  
GARY SPAGGIARI, MANAGER  
ROAD & BRIDGE

ANY REPRODUCTION OF THIS MAP SHALL NOT BE "CERTIFIED A TRUE COPY" WITHOUT MY SIGNATURE AND DATE THEREOF IN INK, TOGETHER WITH MY EMBOSSED SEAL ON SAID COPY.  
I HEREBY CERTIFY THAT THIS MAINTAINED RIGHT-OF-WAY MAP (SHEET 1 OF 1) REPRESENTS A SURVEY OF THE MAINTAINED ROAD LIMITS AS SHOWN HEREON THAT THE SURVEY WAS RECENTLY PERFORMED UNDER MY DIRECTION, THAT IT IS TRUE AND CORRECT TO THE BEST OF MY KNOWLEDGE AND BELIEF AND THAT THE SURVEY MEETS THE MINIMUM TECHNICAL STANDARDS AS SET FORTH BY THE FLORIDA BOARD OF PROFESSIONAL LAND SURVEYORS IN CHAPTER 11E17, FLORIDA ADMINISTRATIVE CODE, PURSUANT TO SECTION 472.027, FLORIDA STATUTES.  
*Teri S. Owen* 4-14-08  
TERI S. OWEN, Professional Surveyor and Mapper No. 5928

ABBREVIATION LEGEND		SYMBOL LEGEND	
P.B. = PLAT BOOK	P.I.D. = PROPERTY IDENTIFICATION NUMBER	● = NAIL & DISK FOUND	○ = ONE TREE
CONC. = CONCRETE	R.C.P. = REINFORCED CONCRETE PIPE	■ = CONCRETE MONUMENT FOUND	○ = IRON PIPE
M.O.M. = MONUMENT	L.R. & C.P. = IRON ROD AND CAP	○ = IRON ROD & CAP FOUND	○ = IRON ROD
R/W = RIGHT-OF-WAY	L.O.B. = TOP OF BANK	○ = IRON ROD FOUND	○ = BENCH MARK FND.
PL. = PLAT	U/G = UNDERGROUND	○ = IRON PIPE FOUND	○ = SERVICE BOX
PL. FOUND	TEMP. = TEMPORARY	○ = NAIL & DISK SET #5928	○ = GATE
MEASURED	BASE = EASEMENT	○ = CHISEL CUT FOUND	○ = MANHOLE
P.C. = PAGE	VER. = VERGON	○ = IRON ROD & CAP SET	○ = TRANSFORMER
OFFICIAL RECORDS BOOK	R = RADIUS	○ = IRON ROD & CAP SET	○ = BACKFLOW
Q.L.R. = OFFICIAL RECORDS BOOK			

MAINTAINED RIGHT-OF-WAY MAP		FIELD DATE: 10-24-06, 8-15-07, 4-10-08	
ROBERTS POINT CIRCLE BEGINNING AND ENDING AT ROBERTS POINT ROAD		PROJ. NO.: 06135	DWG DATE: 11-13-06
		SEC. 1, TWP. 37 S., RNG. 17 E.	SHEET NO. 1
		F.B.476, PG. 14	of 1
		I:\SURVEY\ROBPTCIR\ROBPTCIR_MRW.DWG	DRAWN BY: T.S.O.
			CHECKED BY:

B.C.C. RESO. NO. 2008-145 O.R.I. 2008.10.49.39