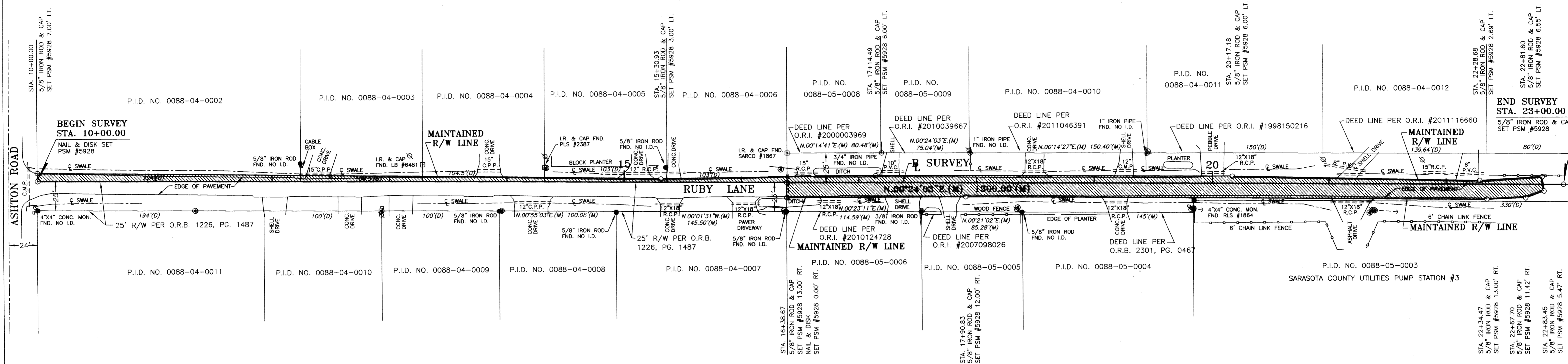


TRACT 4, BLOCK 3, SARASOTA VENICE COMPANY SUBDIVISION Sec., 9, Township 37 South, Range 18 East, P.B. A, PG. 68



TRACT 4, BLOCK 3, SARASOTA VENICE COMPANY SUBDIVISION Sec., 9, Township 37 South, Range 18 East, P.B. A, PG. 68

THIS IS TO CERTIFY THAT THE NUMBERED SHEET ONE (1) OF ONE (1) CONSTITUTES THE OFFICIAL MAINTENANCE MAP SHOWING THE LOCATION AND SURVEY BY SARASOTA COUNTY PUBLIC WORKS, REAL ESTATE SERVICES, SURVEY-MAPPING FOR RUBY LANE, FROM ASHTON ROAD EAST 1300 FEET BEING IN SECTION 9, TOWNSHIP 37 SOUTH, RANGE 18 EAST SARASOTA COUNTY, FLORIDA PURSUANT TO THE PROVISIONS OF CHAPTER 95.361, FLORIDA STATUTES.

FILED OR RECORD IN ROAD PLAT BOOK 4 AT PAGE 79 OF THE PUBLIC RECORDS OF SARASOTA, COUNTY FLORIDA, THIS 23 DAY OF December, A.D., 2014.

KAREN E. RUSHING, CLERK OF THE CIRCUIT COURT, SARASOTA COUNTY, FLORIDA. Signature: Patti Maggio, DEPUTY CLERK.

THIS IS TO CERTIFY THAT THIS MAINTAINED MAP WAS APPROVED BY RESOLUTION NO. 2014-227 PASSED AND ADOPTED BY THE BOARD OF COUNTY COMMISSIONERS OF SARASOTA COUNTY, FLORIDA, ON THE 11th DAY OF December, 2014.

ATTEST: KAREN E. RUSHING, CLERK OF THE CIRCUIT COURT AND EX-OFFICIO CLERK OF THE BOARD OF COUNTY COMMISSIONERS OF SARASOTA COUNTY, FLORIDA. BY: Teri S. Owen, DEPUTY CLERK.

THIS IS TO CERTIFY THAT THE LIMITS OF THE ROADWAY OUTSIDE OF PLATTED RIGHT-OF-WAY AS SHOWN CROSS-HATCHED HEREON, HAS BEEN MAINTAINED CONTINUOUSLY FOR OVER SEVEN (7) YEARS WITHOUT INTERRUPTION.

Signatures and dates for Spencer L. Anderson, P.E., Director Public Works, Field Services (6/30/14), Lin Kulant, Manager Real Property (8-13-14), and James K. Harriott Jr., P.E., County Engineer (08/01/14).

SURVEYOR'S NOTES

- 1. BEARINGS SHOWN HEREON ARE BASED ON THE FLORIDA STATE PLANE COORDINATE SYSTEM, WEST ZONE, NAD83 ADJUSTMENT OF 1990. CONTROL FOR THE SURVEY IS BASED ON SARASOTA COUNTY CONTINUOUS OPERATING REFERENCE STATION "FRUIT" AND WAS PROPAGATED TO THE LOCAL AREA USING REAL TIME KINETIC GPS TECHNIQUE.
2. ADDITIONS OR DELETIONS TO THE SURVEY MAP BY OTHER THAN THE SIGNING PARTY IS PROHIBITED WITHOUT THE WRITTEN CONSENT OF THE SIGNING PARTY.
3. THE SURVEY DEPICTED HERE IS NOT COVERED BY PROFESSIONAL LIABILITY INSURANCE. SARASOTA COUNTY IS SELF INSURED.
4. THIS MAP WAS PREPARED WITHOUT THE BENEFIT OF AN ABSTRACT OF TITLE OR AN ATTORNEY'S OPINION OF TITLE, THEREOF, ANY DEED OVERLAP OR HAIUS OR ANY RECORDED OR UNRECORDED RIGHTS-OF-WAY AND OR EASEMENTS MAY NOT BE SHOWN.
5. IMPROVEMENTS SUCH AS, BUT NOT LIMITED TO, UNDERGROUND UTILITIES, LANDSCAPE FEATURES, ETC., HAVE NOT BEEN LOCATED EXCEPT AS SHOWN.
6. A CHANGE OR JOG ON THE MAINTAINED RIGHT-OF-WAY LINE IS NOT NECESSARILY LOCATED AT AN INTERSECTION PROPERTY LINE.

ANY REPRODUCTION OF THIS MAP SHALL NOT BE "CERTIFIED A TRUE COPY" WITHOUT MY SIGNATURE AND DATE THEREOF IN INK, TOGETHER WITH MY EMBOSSED SEAL ON SAID COPY.

ABBREVIATION LEGEND

SYMBOL LEGEND (SYMBOLS NOT DRAWN TO SCALE)

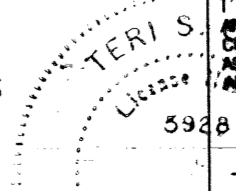
SPECIFIC PURPOSE SURVEY

MAINTAINED RIGHT-OF-WAY MAP RUBY LANE (ASHTON RD. EAST 1300 FT.)

Table with project details: PROJ. NO.: 14042, SEC: 9, TWP: 37 S., RGE: 18 E., DWG DATE: 7-14-14, FIELD DATE: 7-9-14, DRAWN BY: T.S.O., CHECKED BY: C.H.



SARASOTA COUNTY SURVEY-MAPPING PUBLIC WORKS, TRANSPORTATION AND REAL ESTATE SERVICES. 1001 SARASOTA CENTER BLVD. SARASOTA, FLORIDA 34240. 941/861-6709 • 941/861-0611 • FAX 941/861-6431



TERI S. OWEN, Professional Surveyor and Mapper No. 5928. Date: 7-30-14.

ABBREVIATION LEGEND table listing symbols for M.E.S., C.P.P., NAD, etc.

SYMBOL LEGEND table listing symbols for NAIL AND DISK SET, YARD LIGHT, SIGN, etc.

B.C.C. RESO. NO. 2014-227 O.R.I. 201447772