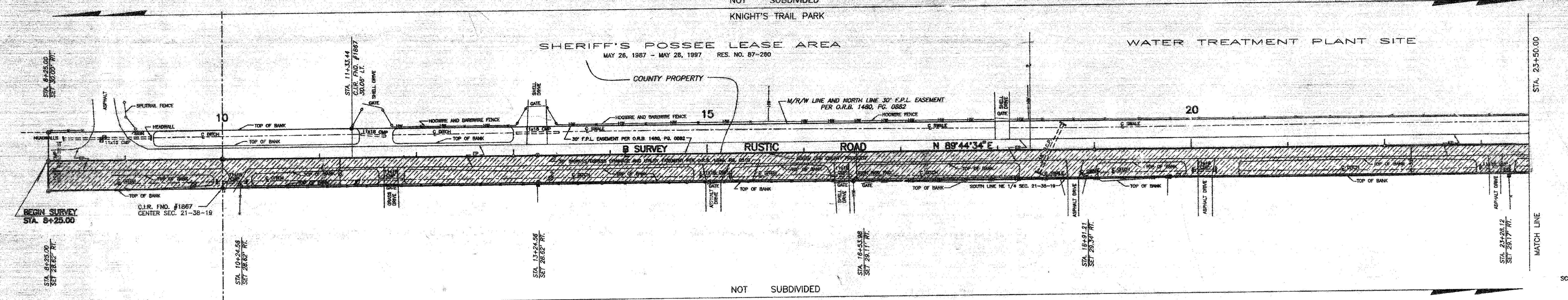


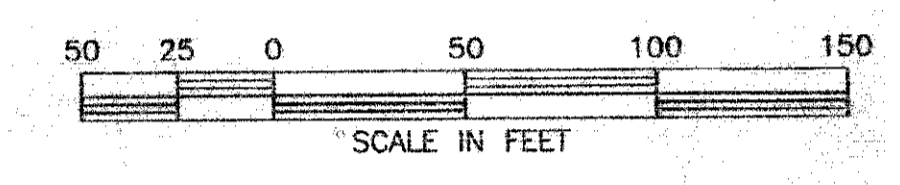
NOT SUBDIVIDED
KNIGHT'S TRAIL PARK

SHERIFF'S POSSEE LEASE AREA
MAY 26, 1987 - MAY 26, 1997 RES. NO. 87-280

WATER TREATMENT PLANT SITE

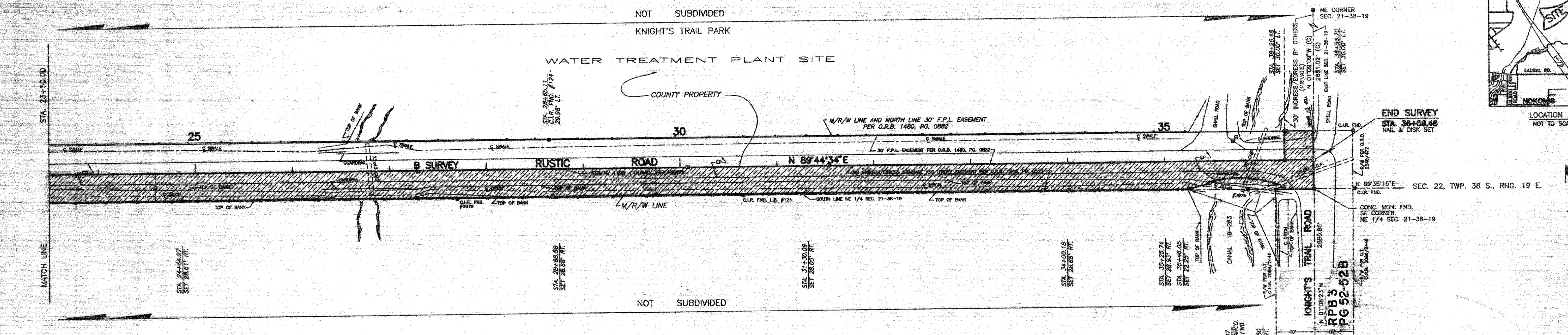


SECTION 21, TOWNSHIP 38 SOUTH, RANGE 19 EAST

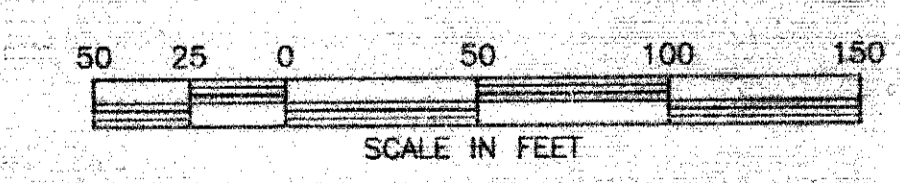


NOT SUBDIVIDED
KNIGHT'S TRAIL PARK

WATER TREATMENT PLANT SITE



SECTION 21, TOWNSHIP 38 SOUTH, RANGE 19 EAST



FILED FOR RECORD
94 MAR 21 PM 3:47
KAREN E. RUSHING
CLERK OF CIRCUIT COURT
SARASOTA COUNTY, FL

THIS IS TO CERTIFY THAT THE NUMBERED SHEETS ONE (1) OF ONE (1) CONSTITUTES THE OFFICIAL MAINTENANCE MAP SHOWING THE LOCATION AND SURVEY BY THE SARASOTA COUNTY, FLORIDA TRANSPORTATION DEPARTMENT FOR RUSTIC ROAD, LYING BETWEEN KNIGHT'S TRAIL PARK ENTRANCE AND KNIGHT'S TRAIL ROAD, ALL BEING IN SECTION 21, TOWNSHIP 38 SOUTH, RANGE 19 EAST, SARASOTA COUNTY, FLORIDA, PURSUANT TO THE PROVISIONS OF CHAPTER 96.301, FLORIDA STATUTES OF 1991.

FILED FOR RECORD IN ROAD PLAT BOOK 4 AT PAGE 7 OF THE PUBLIC RECORDS OF SARASOTA COUNTY, FLORIDA, THIS DAY OF 1994.

KAREN E. RUSHING
CLERK OF THE CIRCUIT COURT
SARASOTA COUNTY, FLORIDA
BY: Susan L. Crames
DEPUTY CLERK

THIS IS TO CERTIFY THAT THIS MAINTAINED MAP WAS APPROVED BY RESOLUTION NO. 94-058 PASSED AND ADOPTED BY THE BOARD OF COUNTY COMMISSIONERS OF SARASOTA COUNTY, FLORIDA, ON THE 15TH DAY OF MARCH, 1994.

Susan Kay Garland
CHAIRMAN

ATTEST:
KAREN E. RUSHING CLERK OF THE CIRCUIT COURT AND DEPUTY CLERK OF THE BOARD OF COUNTY COMMISSIONERS OF SARASOTA COUNTY, FLORIDA BY:

Susan Kay Garland
DEPUTY CLERK

THIS IS TO CERTIFY THAT THE LIMITS OF THE ROADWAY SOUTH OF COUNTY PROPERTY AS SHOWN CROSS-HATCHED HEREON, HAS BEEN MAINTAINED CONTINUOUSLY FOR OVER FOUR (4) YEARS WITHOUT INTERRUPTION.
Richard Christensen 10-27-93
RICHARD CHRISTENSEN
AREA SUPERINTENDENT
HIGHWAY MAINTENANCE

SURVEYOR'S CERTIFICATE

I HEREBY CERTIFY THAT THIS MAINTAINED RIGHT-OF-WAY MAP (SHEETS 1 OF 1) REPRESENTS A SURVEY OF THE ROAD ALIGNMENT AS SHOWN HEREON, THAT THE SURVEY WAS RECENTLY PERFORMED UNDER MY DIRECTION, THAT IT IS TRUE AND CORRECT TO THE BEST OF MY KNOWLEDGE AND BELIEF AND THAT THE SURVEY MEETS THE MINIMUM TECHNICAL STANDARDS AS SET FORTH BY THE FLORIDA BOARD OF PROFESSIONAL LAND SURVEYORS IN CHAPTER 21-H18, F.A.C. PURSUANT TO SECTION 472.027, F.S.

DATE OF SURVEY: 8-25-93
DATE MONUMENTS SET: 10-14-93

E.R. Emerson 1-26-94
E.R. EMERSON, COUNTY SURVEYOR
PROFESSIONAL LAND SURVEYOR NO. 1867
STATE OF FLORIDA
1361 CHATELAIN ROAD
SARASOTA, FLORIDA 34232-9834

SURVEYOR'S NOTES

- BEARINGS SHOWN ARE BASED ON THE KNIGHT'S TRAIL RIGHT-OF-WAY MAP, RECORDED IN ROAD PLAT BOOK 3, PAGE 52-52B, THE SOUTH LINE OF THE NORTHEAST QUARTER (1/4) OF SECTION 21, TOWNSHIP 38 SOUTH, RANGE 19 EAST, BEING N 89°44'28\"/>

ABBREVIATION LEGEND

- C.M. = CONCRETE MONUMENT
- CONC. = CONCRETE
- D.N.R. = DEPARTMENT OF NATURAL RESOURCES
- EP = EDGE OF PAVEMENT
- FND. = FOUND
- LT. = LEFT
- NO. = NUMBER
- O.R.B. = OFFICIAL RECORDS BOOK
- RNG. = RANGE
- RT. = RIGHT
- R/W = RIGHT-OF-WAY
- SARCO = SARASOTA COUNTY
- SEC. = SECTION
- TWP. = TOWNSHIP
- D.O.T. = DEPARTMENT OF TRANSPORTATION
- CMP. = CORRUGATED METAL PIPE
- RCF. = REINFORCED CONCRETE PIPE
- L.B. = LICENSE BUSINESS
- F.B. = FIELD BOOK
- MON. = MONUMENT
- CL.R. = CAPPED IRON ROD

LEGEND

- = IRON ROD SET
- = IRON ROD SET
- = CONC. MON. FND.
- △ = NAIL & FLASHER SET
- △ = NAIL & DISK FND.
- ⊙ = P/NAIL FOUND
- ⊙ = WOOD POWER POLE
- ⊙ = UTILITY POLE
- ⊙ = WATER VALVE
- ⊙ = WOOD FENCE
- ⊙ = BARBED WIRE FENCE
- ⊙ = IRON ROD SET WITH RED CAP STAMPED COUNTY R/W P.L.S. #1867

SARASOTA COUNTY TRANSPORTATION DEPARTMENT
ENGINEERING DIVISION, SURVEY - MAPPING SECTION

MAINTAINED RIGHT OF WAY MAP

RUSTIC ROAD
KNIGHT'S TRAIL PARK ENTRANCE TO KNIGHT'S TRAIL ROAD

DATE	BY	DATE	BY
0-20-93	T. OWEN	1-26-94	<i>[Signature]</i>
10-15-93	<i>[Signature]</i>	2-9-94	<i>[Signature]</i>
10-15-93	J.R.J.	2-9-94	<i>[Signature]</i>

SCALE: 1" = 50'

PROJECT NO. 93086 JOB NO. 0405 SHEET 1 OF 1