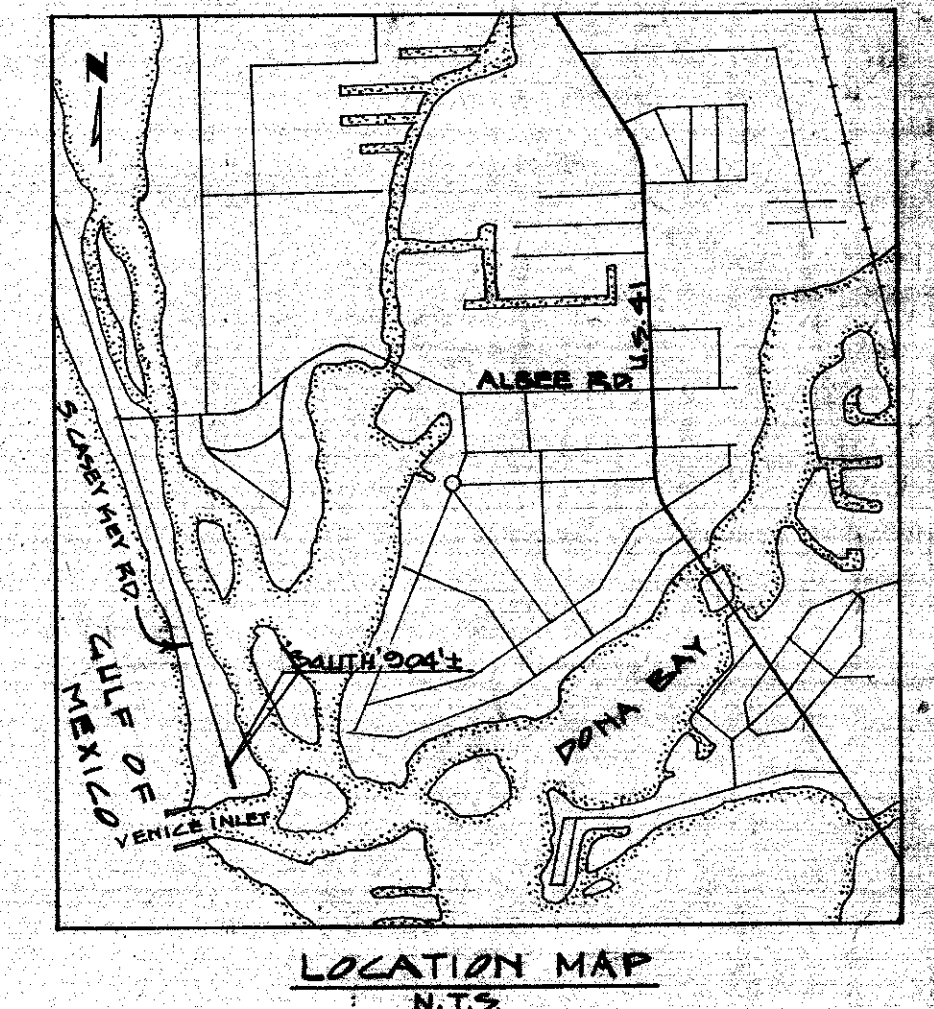
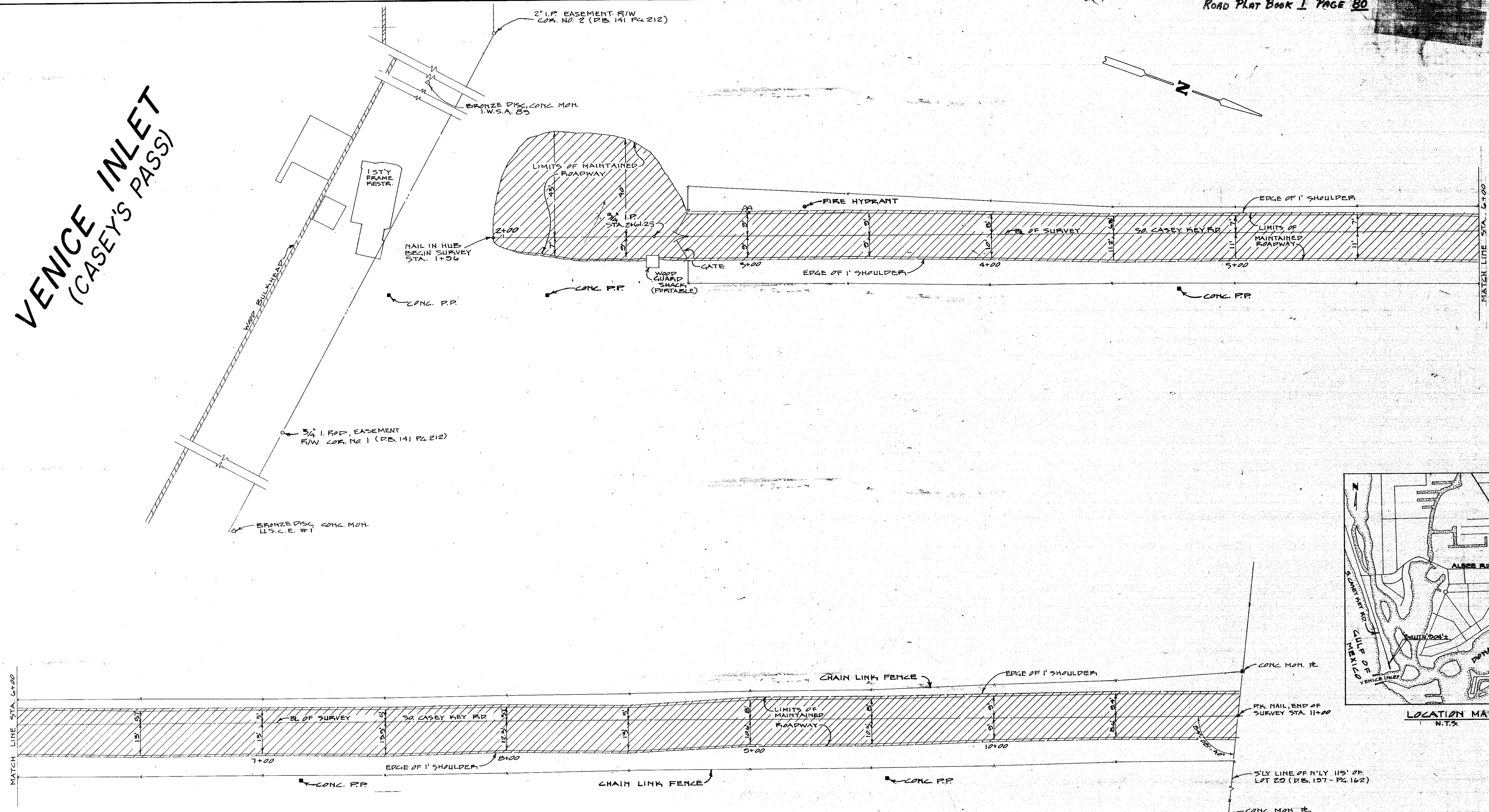


VENICE INLET (CASEY'S PASS)



THIS IS TO CERTIFY THAT THIS MAP NUMBERED SHEETS ONE(1) OF ONE(1) CONSTITUTES THE OFFICIAL MAINTENANCE MAP SHOWING LOCATION AND SURVEY BY SARASOTA COUNTY, FLORIDA, PUBLIC WORKS DEPT FOR A PORTION OF SO CASEY KEY ROAD IN SARASOTA COUNTY, FLORIDA. THE PROPERTY SHOWN CROSS-HATCHED ON SAID MAP HAS BEEN VESTED IN SARASOTA COUNTY, FLORIDA, PURSUANT TO THE PROVISIONS OF CHAPTER 337.31, FLORIDA STATUTES OF 1955, OR BY OTHER FORMAL CONVEYANCE AND OTHER INSTRUMENTS.

I HEREBY CERTIFY THAT THIS MAINTENANCE MAP REPRESENTS A SURVEY THE SOUTHERLY 004 1/2 FEET OF SOUTH CASEY KEY ROAD WHICH WAS RECENTLY MADE UNDER MY DIRECTION AND THAT IT IS TRUE AND CORRECT TO THE BEST OF MY KNOWLEDGE AND BELIEF.

E. R. Emerson
 REGISTERED LAND SURVEYOR NO 1867
 STATE OF FLORIDA

THIS MAINTENANCE MAP WAS APPROVED BY RESOLUTION NO. 74-139 PASSED AND ADOPTED BY THE BOARD OF COUNTY COMMISSIONERS OF SARASOTA COUNTY, FLORIDA ON THE 17th DAY OF JULY A.D. 1974. IN WITNESS WHEREOF, WE HAVE HEREUNTO SET OUR HANDS AND AFFIXED THE SEAL OF THE BOARD OF COUNTY COMMISSIONERS OF SARASOTA COUNTY, FLORIDA ON THE 17th DAY OF JULY A.D. 1974.

W. R. ...
 DEPUTY CLERK

R. H. Mackney, Jr.
 CLERK OF CIRCUIT COURT OF SARASOTA COUNTY, FLORIDA

By W. R. ...
 Deputy Clerk

THIS IS TO CERTIFY THAT THE LIMITS OF THE ROADWAY AS SHOWN CROSS-HATCHED ON THIS MAP HAVE BEEN MAINTAINED CONTINUOUSLY FOR OVER FOUR (4) YEARS IMMEDIATELY PAST WITHOUT INTERRUPTION OR DISTURBANCE.

W. R. ...
 SUPERINTENDENT, ROAD & BRIDGE DIVISION

ACCEPTED FOR FILE AND RECORDED IN THE PUBLIC RECORDS OF SARASOTA COUNTY, FLORIDA THIS 17th DAY OF JULY A.D. 1974 IN ROAD PLAT BOOK 1 PAGE 80.



REF: SARASOTA CO. F.B. 200, PP 1-7

PUBLIC WORKS DEPT.
 Sarasota County, Florida

MAINTENANCE MAP
 SO CASEY KEY ROAD
 (SOUTHERLY 004 1/2)

Scale: 1" = 20' Drawn: J.E. Checked: _____

Approved By: *Sebastian J. Dalli* PE
 County Engineer

Date: JULY '74 Sheet No: 10FL