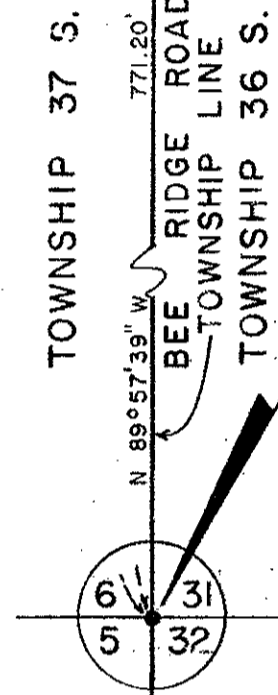


SCALE 1" = 50'

SEC. 31, TWP 36 S, RGE. 19 E.



THIS IS TO CERTIFY THAT THIS NUMBERED SHEET ONE (1) OF ONE (1) CONSTITUTES THE OFFICIAL MAINTENANCE MAP SHOWING THE LOCATION AND SURVEY BY THE SARASOTA COUNTY, FLORIDA, TRANSPORTATION DEPARTMENT FOR SARASOTA GOLF CLUB BOULEVARD LYING BETWEEN WEBBER ROAD AND MCKOWN ROAD IN SECTION 31, TOWNSHIP 36 S, RANGE 19 E, SARASOTA COUNTY, FLORIDA. THE PROPERTY SHOWN CROSS-HATCHED ON THIS MAP HAS BEEN VESTED IN SARASOTA COUNTY, FLORIDA, PURSUANT TO THE PROVISIONS OF CHAPTER 95.361, FLORIDA STATUTES OF 1963.

ACCEPTED FOR FILE AND RECORDED IN THE PUBLIC RECORDS OF SARASOTA COUNTY, FLORIDA THIS 26 DAY OF SEPT. A.D. 1985, IN ROAD PLAT BOOK 2 PAGE 65.

[Signature]
CLERK OF THE CIRCUIT COURT
SARASOTA COUNTY, FLORIDA

THIS IS TO CERTIFY THAT THIS MAINTENANCE MAP WAS APPROVED BY RESOLUTION NO. 85-386 PASSED AND ADOPTED BY THE BOARD OF COUNTY COMMISSIONERS OF SARASOTA COUNTY, FLORIDA, ON THE 24 DAY OF SEPT. A.D., 1985.

BOARD OF COUNTY COMMISSIONERS OF SARASOTA COUNTY, FLORIDA BY:
[Signature]
CHAIRMAN

ATTEST:
R.L. HACKNEY JR. CLERK OF THE CIRCUIT COURT AND EX-OFFICIO CLERK OF THE BOARD OF COUNTY COMMISSIONERS OF SARASOTA COUNTY, FLORIDA BY:
[Signature]
DEPUTY CLERK

THIS IS TO CERTIFY THAT THE LIMITS OF THE ROADWAY OUTSIDE OF THE PLATTED RIGHT-OF-WAY AS SHOWN CROSS-HATCHED HEREON, HAS BEEN MAINTAINED CONTINUOUSLY FOR OVER FOUR (4) YEARS WITHOUT INTERRUPTION.

[Signature]
SUPERINTENDENT
ROAD & BRIDGE DIVISION

SURVEYORS CERTIFICATE

I HEREBY CERTIFY THAT THIS MAINTAINED R/W MAP REPRESENTS A BOUNDARY SURVEY OF THE ROAD AS SHOWN, THAT THE SURVEY WAS RECENTLY PERFORMED UNDER MY DIRECTION, AND THAT IT IS TRUE AND CORRECT TO THE BEST OF MY KNOWLEDGE AND BELIEF, AND THAT IT MEETS THE MINIMUM TECHNICAL STANDARDS FOR LAND SURVEYING IN THE STATE OF FLORIDA (CH 21HH-6, F.A.C. EFFECTIVE SEPT 1, 1981).

DATE OF SURVEY 9/11/85, 9/17/85

[Signature]
E.A. EMERSON, COUNTY SURVEYOR
PROFESSIONAL LAND SURVEYOR NO. 1867
STATE OF FLORIDA
1501 CATTLEMEN ROAD
SARASOTA, FLORIDA

9-20-85
DATE

LEGEND
○ = IRON ROD W/RED CAP MARKED R/W 1967

BEARINGS
BEARINGS ARE BASED UPON THE DEED RECORDED IN OFFICIAL RECORD BOOK 834, PAGE 1000, THE CENTERLINE OF GOLF CLUB BLVD., STA. 10+00 TO STA. 16+60.79 BEING N2°35'54"W

SARASOTA COUNTY TRANSPORTATION DEPARTMENT
ENGINEERING DIVISION, CADASTRAL SECTION

MAINTAINED RIGHT OF WAY MAP

SARASOTA GOLF CLUB BLVD
WEBBER ROAD TO MCKOWN ROAD

BY	DATE	DATE	DATE
J.D.B.	9-17-85	9-17-85	9-17-85
CHECKED	9-20-85	9-17-85	9-17-85
PREPARED	9-17-85	9-17-85	9-17-85
F.B. 244, PG. 2		TRANSPORTATION DIRECTOR	
F.B. 293, PGS 76-77			

SCALE 1" = 50'

PROJECT NO. 0405 (85079) SHEET 1 of 1