

P.K. NAIL
S.E. CORNER
S.W. 1/4 SEC.
3-37-18

THIS IS TO CERTIFY THAT THIS MAP NUMBERED SHEETS ONE (1) OF ONE (1) CONSTITUTES THE OFFICIAL MAINTENANCE MAP SHOWING LOCATION AND SURVEY BY SARASOTA COUNTY, FLORIDA, TRANSPORTATION DEPARTMENT FOR A PORTION OF SAWYER ROAD, LYING SOUTH OF WILKINSON ROAD, AND NORTH OF PROCTOR ROAD IN SARASOTA COUNTY, FLORIDA. THE PROPERTY SHOWN SHADED ON SAID MAP HAS BEEN VESTED IN SARASOTA COUNTY, FLORIDA, PURSUANT TO THE PROVISIONS OF CHAPTER 95.361, FLORIDA STATUTES OF 1974.

THIS IS TO CERTIFY THAT THE LIMITS OF THE ROADWAY OUTSIDE OF THE PLATTED RIGHT-OF-WAY AS SHOWN SHADED HEREON, HAS BEEN MAINTAINED CONTINUOUSLY FOR OVER FOUR YEARS WITHOUT INTERRUPTION.

THIS IS TO CERTIFY THAT THIS MAINTENANCE MAP WAS APPROVED BY RESOLUTION PASSED AND ADOPTED BY THE BOARD OF COUNTY COMMISSIONERS OF SARASOTA COUNTY, FLORIDA, ON THE 7 DAY OF MARCH, A.D. 1978

L.H.M. Hines
GENERAL FOREMAN
ROAD & BRIDGE DIVISION

BOARD OF COUNTY COMMISSIONERS
OF SARASOTA COUNTY, FLORIDA
BY: *Charles H. Bell*
CHAIRMAN

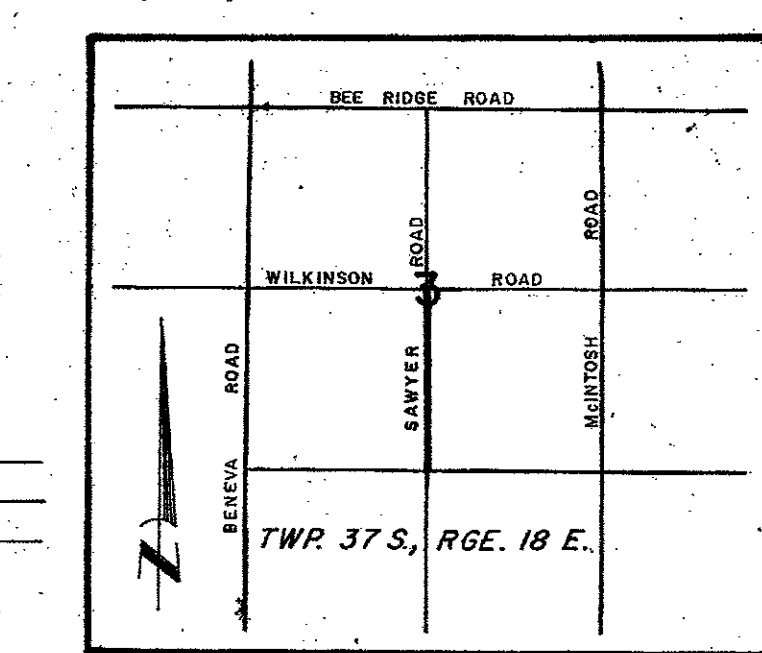
ATTEST:
R.H. HACKNEY JR., CLERK OF THE
CIRCUIT COURT AND EX OFFICIO
CLERK OF THE BOARD OF COUNTY
COMMISSIONERS OF SARASOTA
COUNTY, FLORIDA
BY: *Charles H. Bell*
DEPUTY CLERK

ACCEPTED FOR FILES AND RECORDED IN THE PUBLIC RECORDS OF SARASOTA COUNTY, FLORIDA THIS 14TH DAY OF MARCH, A.D. 1978 IN ROAD PLAT BOOK 2, PAGE 5

Shirley M. Mink
CLERK OF THE CIRCUIT COURT
SARASOTA COUNTY, FLORIDA

LEGEND

- POWER POLE
- TELEPHONE POLE
- FIRE HYDRANT
- BARB WIRE FENCE
- WOOD FENCE
- CHAIN LINK FENCE
- CONCRETE MON.



SARASOTA COUNTY TRANSPORTATION DEPARTMENT ENGINEERING DIVISION			
MAINTAINED RIGHT OF WAY MAP			
SAWYER ROAD LYING BETWEEN PROCTOR & WILKINSON			
BY	DATE		
DRAWN	J. S. DUKES	FEB. 1978	<i>J. S. Dukes</i>
CHECKED	J.W.E.	FEB. 1978	
COMPARED	H.R.B.	FEB. 1978	<i>Charles H. Bell</i>
REF. F.B. 233, Pages 9 to 21	APPROVED: DIRECTOR		
SCALE	PROJECT NO.	SHEET 1 of 1	
1" = 30'	77049		