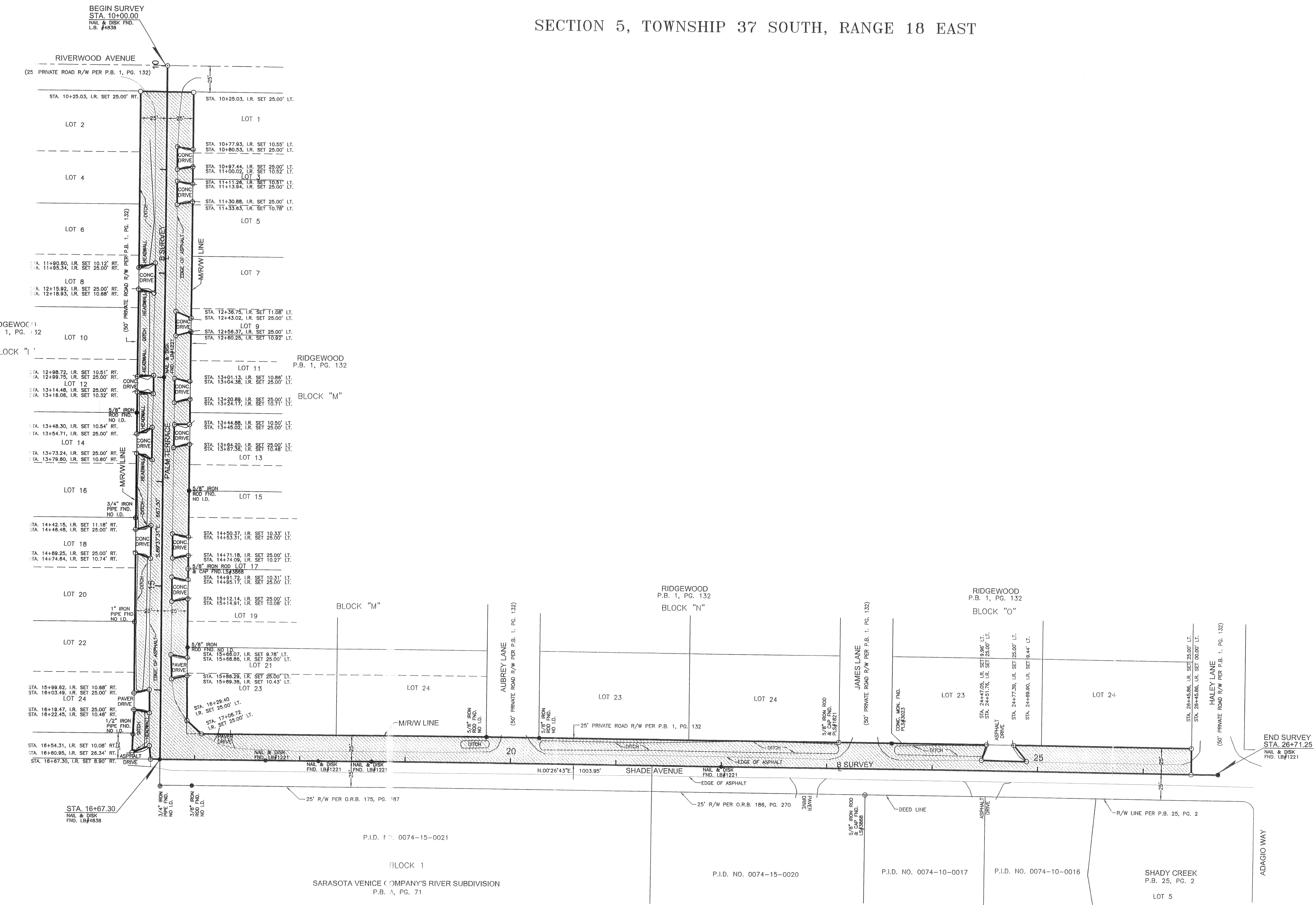
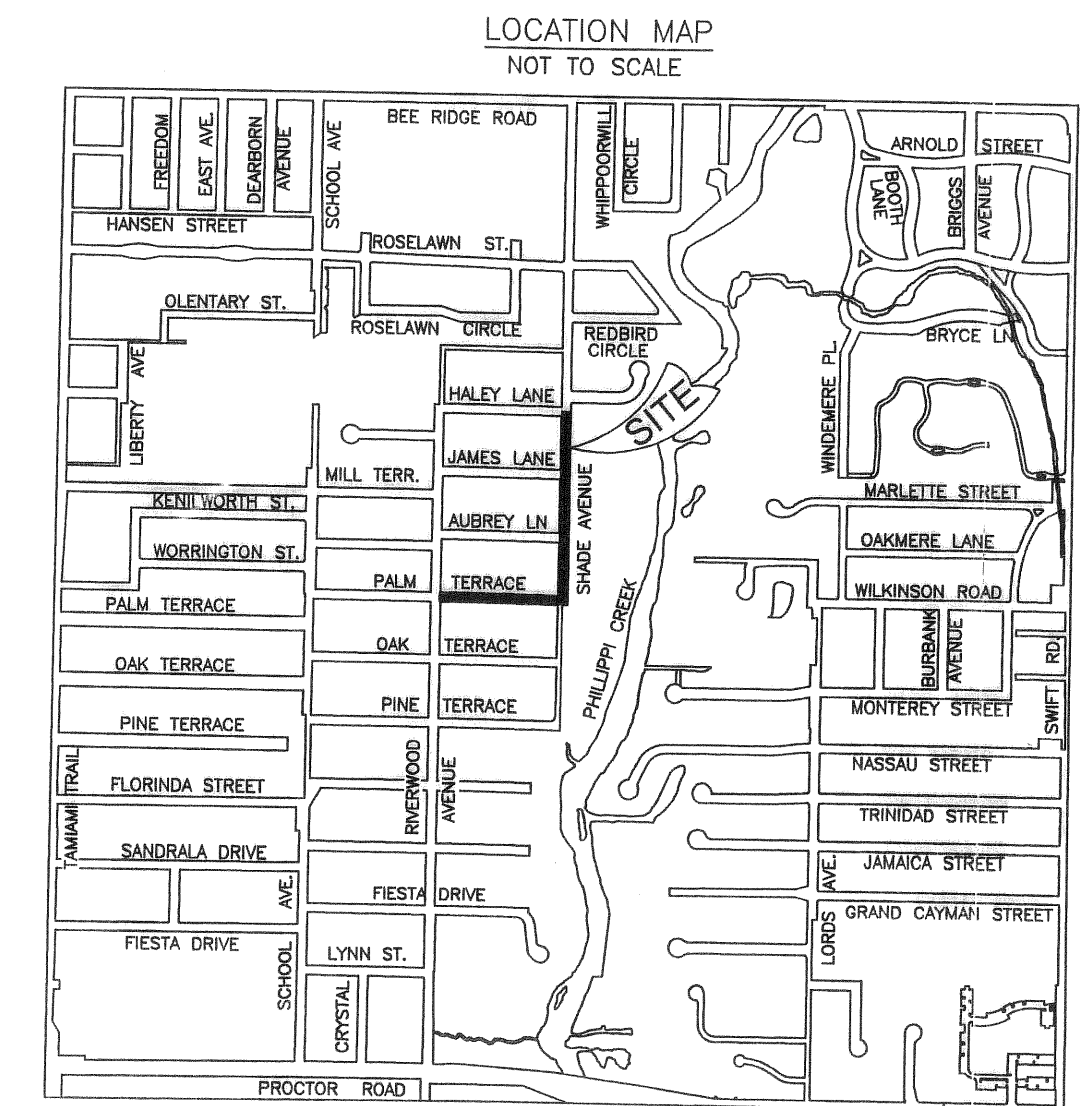
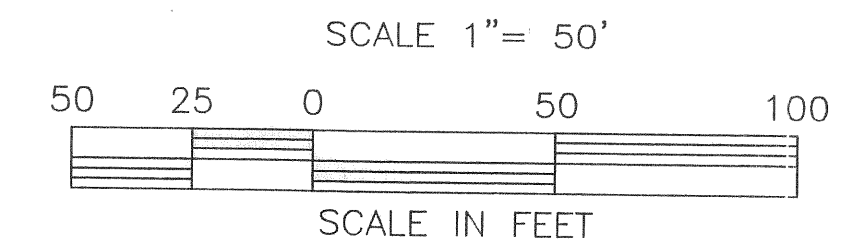
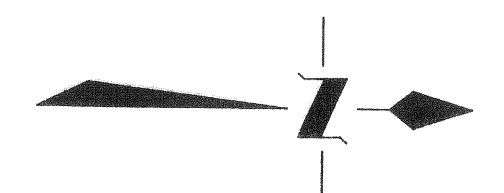


SECTION 5, TOWNSHIP 37 SOUTH, RANGE 18 EAST



SURVEYOR'S NOTES
1. BEARINGS SHOWN HEREON ARE BASED ON ASSUMED DATUM, THE CENTERLINE OF SHADE AVENUE BEING N 00°28'43"E.

THIS IS TO CERTIFY THAT THIS MAINTAINED MAP WAS APPROVED BY RESOLUTION NO. 0074-15-0021 PASSED AND ADOPTED BY THE BOARD OF COUNTY COMMISSIONERS OF SARASOTA COUNTY, FLORIDA ON THE 10th DAY OF JANUARY, 2012.

ATTEST: KAREN E. RUSHING, CLERK OF THE CIRCUIT COURT AND EX-OFFICIO CLERK OF THE BOARD OF COUNTY COMMISSIONERS OF SARASOTA COUNTY, FLORIDA BY: [Signature] DEPUTY CLERK

THIS IS TO CERTIFY THAT THE LIMITS OF THE ROADWAY OUTSIDE OF PLATTED RIGHT-OF-WAY AS SHOWN CROSS-HATCHED HEREON, HAS BEEN MAINTAINED CONTINUOUSLY FOR OVER SEVEN (7) YEARS WITHOUT INTERRUPTION. [Signature] SHARY SPRAGGINS, TECHNICAL MANAGER PUBLIC WORKS, MOBILITY

THIS IS TO CERTIFY THAT THE NUMBERED SHEET ONE (1) OF ONE (1) CONSTITUTES THE OFFICIAL MAINTENANCE MAP SHOWING THE LOCATION AND SURVEY BY SARASOTA COUNTY, FLORIDA, DEVELOPMENT SERVICES BUSINESS CENTER FOR SHADE AVENUE (LYING BETWEEN HAILEY LANE AND PALM TERRACE) AND PALM TERRACE (LYING BETWEEN SHADE AVENUE AND RIVERWOOD AVENUE), BEING IN SECTION 5, TOWNSHIP 37 SOUTH, RANGE 18 EAST, SARASOTA COUNTY, FLORIDA PURSUANT TO THE PROVISIONS OF CHAPTER 95.361, FLORIDA STATUTES OF 2011.

FILED OR RECORD IN ROAD PLAT BOOK 4 AT PAGE 75 OF THE PUBLIC RECORDS OF SARASOTA COUNTY, FLORIDA, THIS 18 DAY OF January, A.D., 2012.

KAREN E. RUSHING, CLERK OF THE CIRCUIT COURT SARASOTA COUNTY, FLORIDA BY: [Signature] DEPUTY CLERK

[Signature] IN KURATI, MANAGER REAL PROPERTY [Signature] JAMES H. HARRIS, JR., P.E. COUNTY ENGINEER

FILED FOR RECORD 2012 JAN 13 PM 12:24

SARASOTA COUNTY SURVEY-MAPPING PLANNING & DEVELOPMENT SERVICES BUSINESS CENTER 1001 SARASOTA CENTER BOULEVARD SARASOTA, FLORIDA 34240 941/650-2627 • 941/861-6865 • FAX 941/861-6157

I HEREBY CERTIFY THAT THIS MAINTAINED RIGHT-OF-WAY MAP (SHEET 1 OF 1) REPRESENTS A SURVEY OF THE MAINTAINED ROAD LINES AS SHOWN HEREON THAT THE SURVEY WAS RECENTLY PERFORMED UNDER MY DIRECTION, THAT IT IS TRUE AND CORRECT TO THE BEST OF MY KNOWLEDGE AND BELIEF AND THAT THE SURVEY MEETS THE MINIMUM TECHNICAL STANDARDS AS SET FORTH BY THE FLORIDA BOARD OF PROFESSIONAL LAND SURVEYORS IN CHAPTER 46-17, FLORIDA ADMINISTRATIVE CODE, PURSUANT TO SECTION 472.027, FLORIDA STATUTES. [Signature] TERRY S. OWEN, Professional Surveyor and Mapper No. 5928

ABBREVIATION LEGEND table with columns for symbol, description, and symbol. Includes items like P.B. = PLAT BOOK, CONC. = CONCRETE, M/W = MAINTAINED RIGHT-OF-WAY, etc.

SYMBOL LEGEND table with columns for symbol, description, and symbol. Includes items like X = CHISEL CUT FOUND, O = NAIL & DISK SET PSM #5928, etc.

MAINTAINED RIGHT-OF-WAY MAP SHADE AVENUE (HAILEY LANE TO PALM TERRACE) & PALM TERRACE (SHADE AVE. TO RIVERWOOD AVE.)

Table with columns: PROJ. NO., DWG DATE, FIELD DATE, DRAWN BY, CHECKED BY, SHEET NO. Values include PROJ. NO.: 11061, DWG DATE: 9-13-11, FIELD DATE: 11-10-11, DRAWN BY: T.S.O., CHECKED BY: W.P., SHEET NO.: 1 of 1.

FILED FOR RECORD 2012 JAN 13 PM 12:24

B.C.C. RESO. NO. O.R.I.

