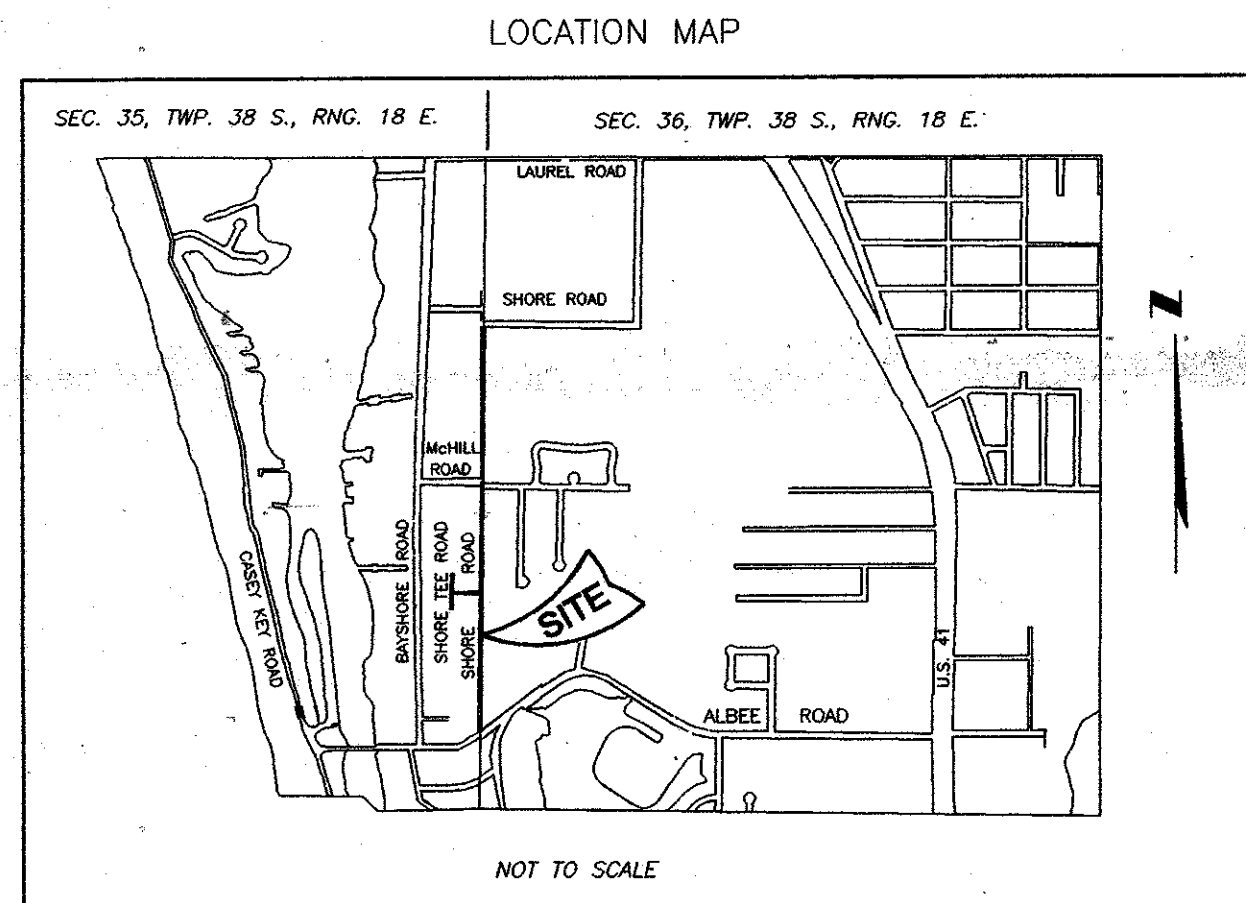
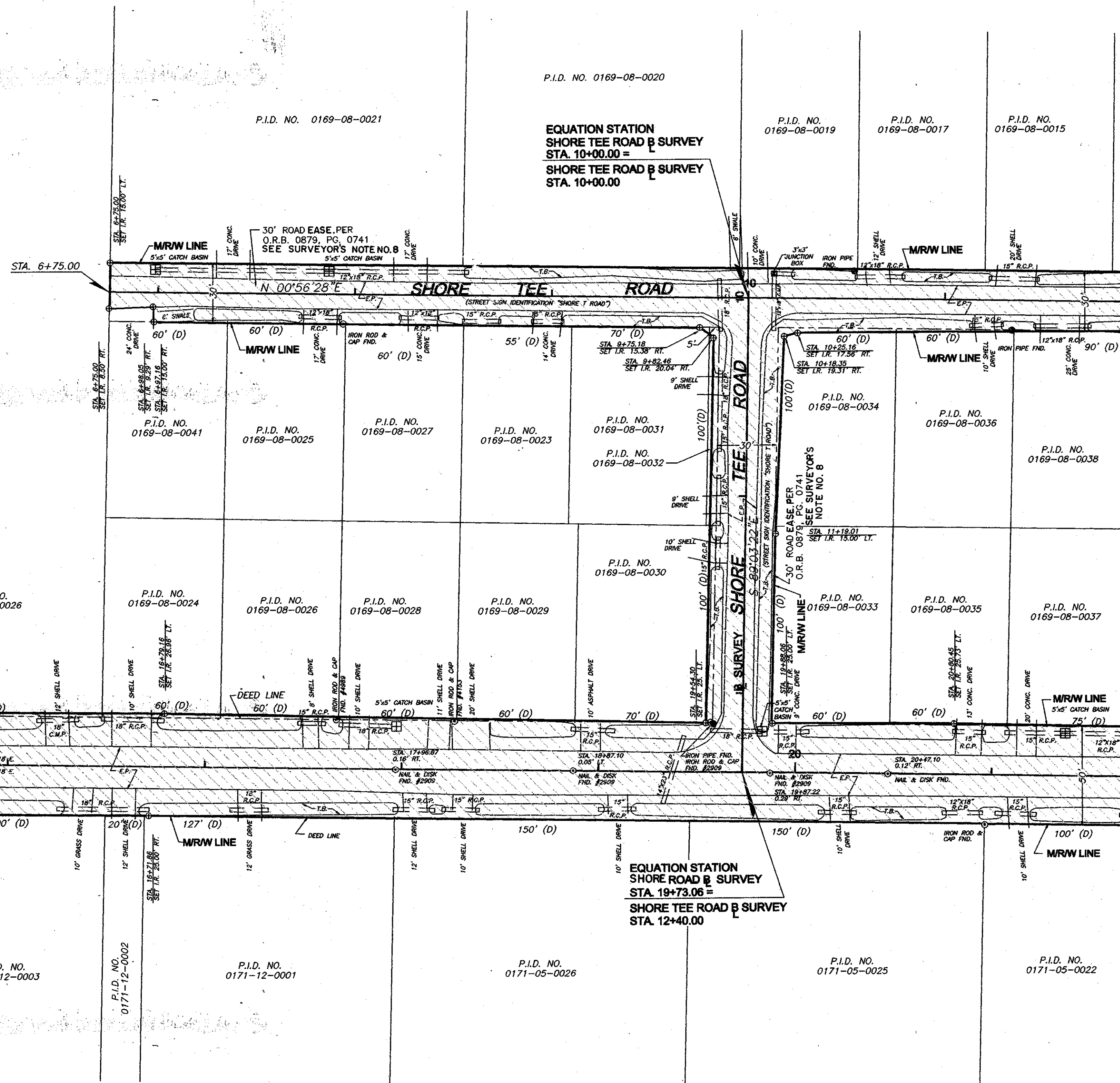


SECTION 35, TOWNSHIP 38 SOUTH, RANGE 18 EAST

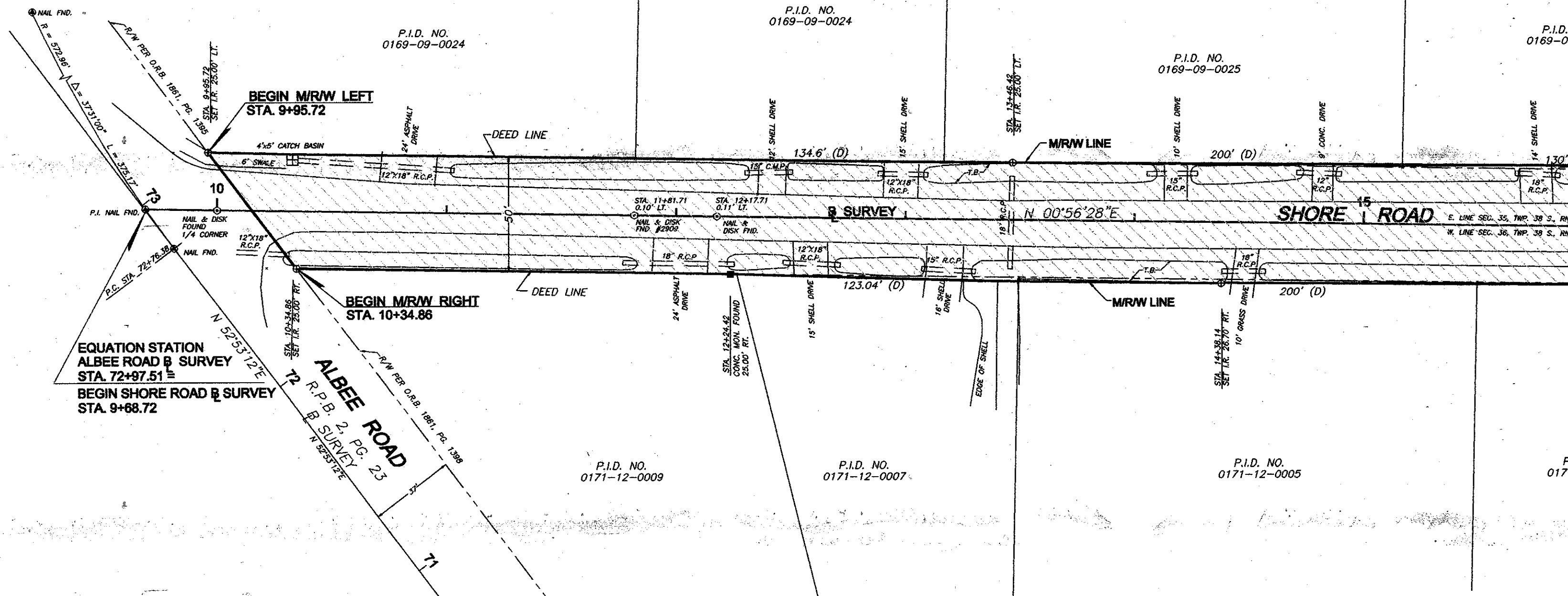
NOT SUBDIVIDED



FILED FOR RECORD
001 JUL -9 PM 1:29
KAREN E. RUSHING
CLERK OF CIRCUIT COURT
SARASOTA COUNTY, FL



NOT SUBDIVIDED



SECTION 36, TOWNSHIP 38 SOUTH, RANGE 18 EAST

NOT SUBDIVIDED

- ABBREVIATION LEGEND**
- T.B. = TOP OF BANK
 - E.P. = EDGE OF PAVEMENT
 - T.S. = TOE OF SLOPE
 - F.B. = FIELD BOOK
 - PG. = PAGE
 - NO. = NUMBER
 - P.I.D. = PROPERTY IDENTIFICATION NUMBER
 - P.L.S. = PROFESSIONAL LAND SURVEYOR
 - F.S. = FLORIDA STATUTES
 - I.P. = IRON PIPE
 - FND. = FOUND
 - MON. = MONUMENT
 - STA. = STATION
 - BL. = BASELINE
 - R.P.B. = ROAD PLAT BOOK
 - RT. = RIGHT
 - LT. = LEFT
 - EASE. = EASEMENT
 - C.M. = CONCRETE MONUMENT
 - O.R.I. = OFFICIAL RECORDS INSTRUMENT
 - U.G.T.E. = UNDERGROUND GENERAL TELEPHONE ELECTRIC
 - R.C.P. = REINFORCED CONCRETE PIPE
 - G.T.E. = GENERAL TELEPHONE ELECTRIC
 - P.B. = PLAT BOOK
 - SEC. = SECTION
 - TWP. = TOWNSHIP
 - RNG. = RANGE
 - F.A.C. = FLORIDA ADMINISTRATIVE CODE
 - M/R/W = MAINTAINED RIGHT-OF-WAY
 - CONC. = CONCRETE
 - (D) = DEED
 - R.C.P. = REINFORCED CONCRETE PIPE
 - C.M.P. = CORROGATED METAL PIPE
 - B.C.C. = BOARD OF COUNTY COMMISSIONERS

THIS IS TO CERTIFY THAT THE NUMBERED SHEETS ONE (1) AND TWO (2) CONSTITUTE THE OFFICIAL MAINTENANCE MAP SHOWING THE LOCATION AND SURVEY BY THE SARASOTA COUNTY, FLORIDA, PUBLIC WORKS BUSINESS CENTER FOR SHORE ROAD AND SHORE TEE ROAD, LYING BETWEEN ALBEE ROAD AND McHILL ROAD, BEING IN SECTIONS 35 AND 36, TOWNSHIP 38 S., RANGE 18 E., SARASOTA COUNTY, FLORIDA PURSUANT TO THE PROVISIONS OF CHAPTER 95.361, FLORIDA STATUTES OF 1999.

THIS IS TO CERTIFY THAT THIS MAINTAINED MAP WAS APPROVED BY RESOLUTION NO. 2001-124 PASSED AND ADOPTED BY THE BOARD OF COUNTY COMMISSIONERS OF SARASOTA COUNTY, FLORIDA, ON THE 12th DAY OF June, A.D., 2001.

ATTEST
KAREN E. RUSHING, CLERK OF THE CIRCUIT COURT AND EX-OFFICIO CLERK OF THE BOARD OF COUNTY COMMISSIONERS OF SARASOTA COUNTY, FLORIDA BY:
Shirley Grant
DEPUTY CLERK
THIS IS TO CERTIFY THAT THE LIMITS OF THE ROADWAY OUTSIDE OF PLATED RIGHT-OF-WAY AS SHOWN CROSS-HATCHED HEREON, HAS BEEN MAINTAINED CONTINUOUSLY FOR OVER FOUR (4) YEARS WITHOUT INTERRUPTION.
Allen Blackwood
ALLEN BLACKWOOD
ROAD & BRIDGE OPERATIONS MANAGER

SURVEYOR'S NOTES

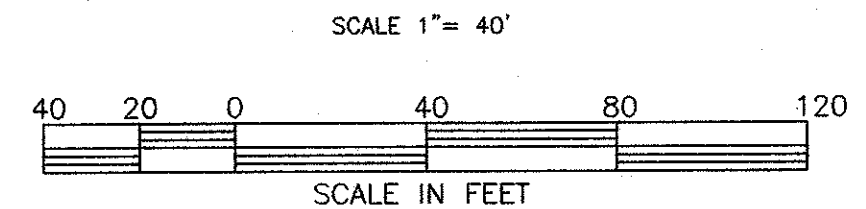
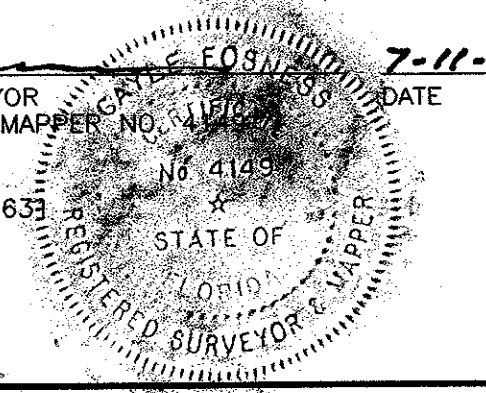
- BEARINGS SHOWN HEREON ARE BASED ON ASSUMED DATUM, THE EAST LINE OF SECTION 35, TOWNSHIP 38 SOUTH, RANGE 18 EAST BEING NORTH 00°56'28"EAST.
- ELEVATIONS SHOWN HEREON ARE BASED ON SARASOTA COUNTY BENCH MARK 171, ELEVATION BEING 4.91 FEET.
- THIS MAP WAS PREPARED WITHOUT THE BENEFIT OF AN ABSTRACT OF TITLE OR AN ATTORNEY'S OPINION OF TITLE, THEREOF, ANY DEED OVERLAP OR HIATUS OR ANY RECORDED OR UNRECORDED RIGHTS-OF-WAY AND OR EASEMENTS MAY NOT BE SHOWN.
- ANY REPRODUCTION OF THIS MAP SHALL NOT BE "CERTIFIED A TRUE COPY" WITHOUT MY SIGNATURE AND DATE THEREOF IN INK, TOGETHER WITH MY EMBOSSED SEAL ON SAID COPY.
- IMPROVEMENTS SUCH AS, BUT NOT LIMITED TO, UNDERGROUND UTILITIES, LANDSCAPE FEATURES, ECT., HAVE NOT BEEN LOCATED EXCEPT AS SHOWN.
- THIS IS NOT A BOUNDARY SURVEY.
- A CHANGE OR JOG ON THE MAINTAINED RIGHT-OF-WAY LINE IS NOT NECESSARILY LOCATED AT AN INTERSECTING PROPERTY LINE.
- SUBJECT TO A 30' WIDE NON-MAINTAINED EASE. TO SARASOTA COUNTY, PER O.R.B. 879, PG.74Q.

SURVEYOR'S CERTIFICATE

I HEREBY CERTIFY THAT THIS MAINTAINED RIGHT-OF-WAY MAP (SHEETS 1-2) REPRESENTS A SURVEY OF THE MAINTAINED ROAD LIMITS AS SHOWN HEREON, THAT THE SURVEY WAS RECENTLY PERFORMED UNDER MY DIRECTION, THAT IT IS TRUE AND CORRECT TO THE BEST OF MY KNOWLEDGE AND BELIEF AND THAT THE SURVEY MEETS THE MINIMUM TECHNICAL STANDARDS AS SET FORTH BY THE BOARD OF PROFESSIONAL LAND SURVEYORS IN CHAPTER 61G17, F.A.C. PURSUANT TO SECTION 472.027, F.S.

DATE OF SURVEY: 5-22-2000
DATE MONUMENTS SET: 5-17-2000

G.M. Fosness
G.M. FOSNESS, COUNTY SURVEYOR
PROFESSIONAL SURVEYOR AND MAPPER NO. 4416
STATE OF FLORIDA
1301 CATLEMEN ROAD
SARASOTA, FLORIDA 34232-9633



SARASOTA COUNTY PUBLIC WORKS BUSINESS CENTER
CONSTRUCTION SERVICES - SURVEY OPERATIONS

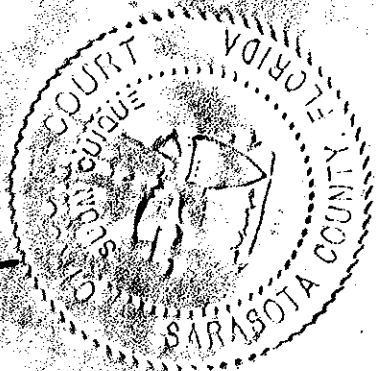
MAINTAINED RIGHT OF WAY MAP
SHORE ROAD & SHORE TEE ROAD
ALBEE ROAD TO McHILL ROAD

DRAWN	BY	DATE	DATE
T. OWEN	T. OWEN	2-25-00	7-11-2000
CHECKED	BY	DATE	DATE
K.C.W.	K.C.W.	5-19-00	7-11-2000
COMPARED	BY	DATE	DATE
K.C.W.	K.C.W.	5-17-00	7/11/00
REF.	F.B. 345, PG. 1		
SCALE	PROJECT NO.	SHEET	
1"= 40'	8752	1 OF 2	

FILED OR RECORD IN ROAD PLAT BOOK 4 AT PAGE 33-33A OF THE PUBLIC RECORDS OF SARASOTA COUNTY FLORIDA, THIS 9th DAY OF July, A.D., 2001.

KAREN E. RUSHING
CLERK OF THE CIRCUIT COURT
SARASOTA COUNTY, FLORIDA

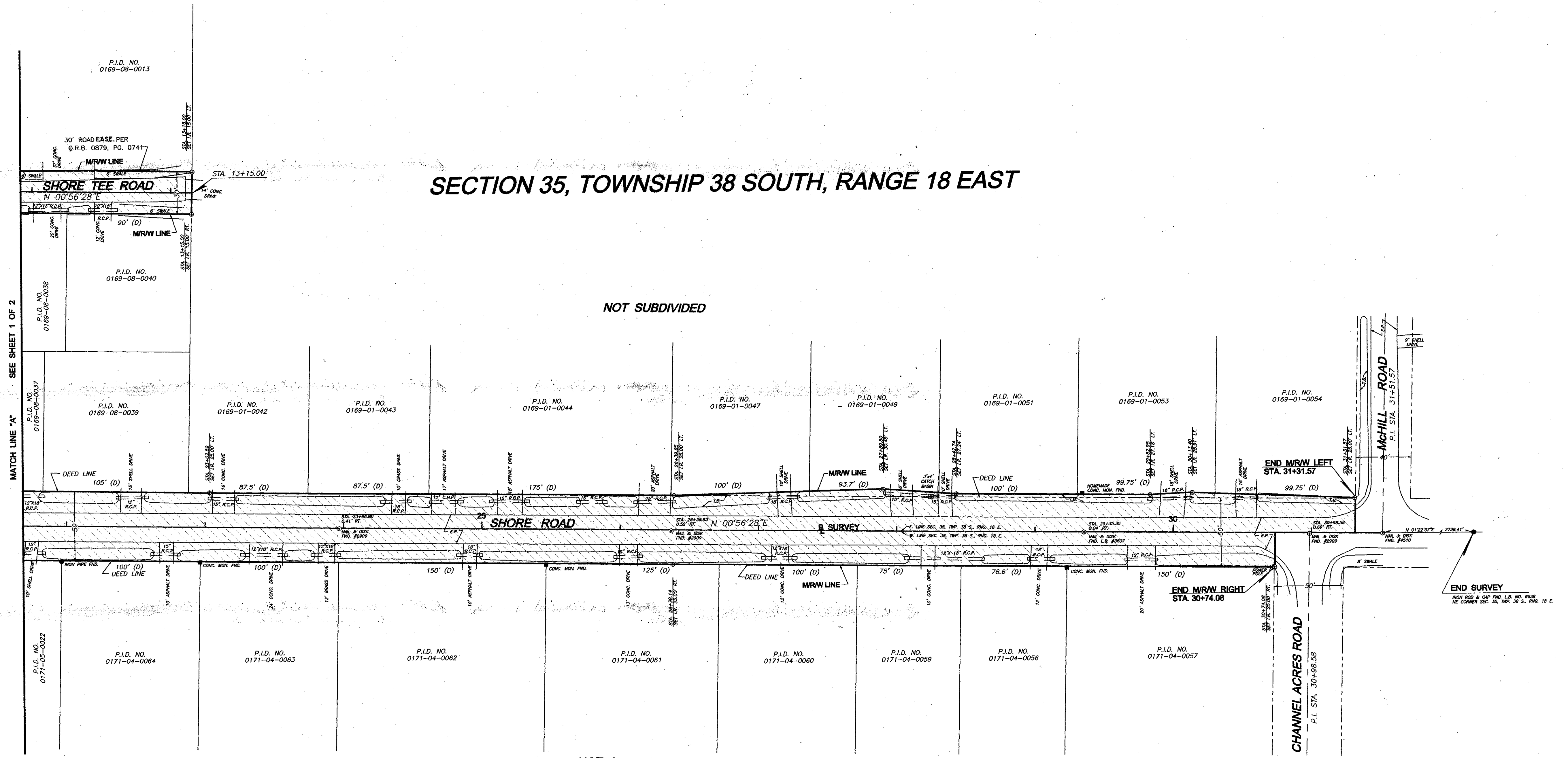
Chaine M. Hamel
DEPUTY CLERK



SEE SHEET 2 OF 2
MATCH LINE "A"
O.R.I. NO. 2001090467
B.C.C. RSO. 2001-139

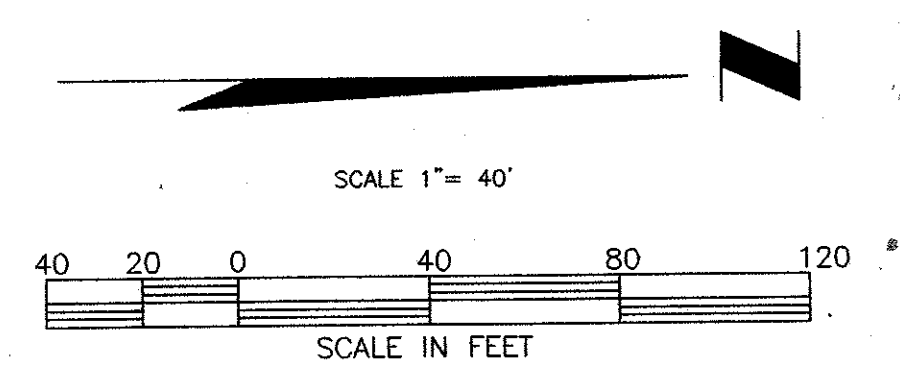
SECTION 35, TOWNSHIP 38 SOUTH, RANGE 18 EAST

NOT SUBDIVIDED



NOT SUBDIVIDED

SECTION 36, TOWNSHIP 38 SOUTH, RANGE 18 EAST



FILED FOR RECORD
 JUN 28 - 9 AM 11:00
 MAREN E. RUSHING
 CLERK OF CIRCUIT COURT
 SARASOTA COUNTY, FL

ABBREVIATION LEGEND

- T.B. = TOP OF BANK
- E.P. = EDGE OF PAVEMENT
- T.S. = TOE OF SLOPE
- F.B. = FIELD BOOK
- PG. = PAGE
- NO. = NUMBER
- P.I.D. = PROPERTY IDENTIFICATION NUMBER
- P.L.S. = PROFESSIONAL LAND SURVEYOR
- F.S. = FLORIDA STATUTES
- I.P. = IRON PIPE
- FND. = FOUND
- MON. = MONUMENT
- STA. = STATION
- B. = BASELINE
- R.P.B. = ROAD PLAT BOOK
- RT. = RIGHT
- LT. = LEFT
- EASE. = EASEMENT
- C.M. = CONCRETE MONUMENT
- O.R.I. = OFFICIAL RECORDS INSTRUMENT
- U.G.T.E. = UNDERGROUND GENERAL TELEPHONE ELECTRIC
- R.C.P. = REINFORCED CONCRETE PIPE
- G.T.E. = GENERAL TELEPHONE ELECTRIC
- P.B. = PLAT BOOK
- SEC. = SECTION
- TWP. = TOWNSHIP
- RNG. = RANGE
- F.A.C. = FLORIDA ADMINISTRATIVE CODE
- M/R/W = MAINTAINED RIGHT-OF-WAY
- CONC. = CONCRETE
- R.C.P. = REINFORCED CONCRETE PIPE
- C.M.P. = CORRUGATED METAL PIPE
- B.C.C. = BOARD OF COUNTY COMMISSIONERS

LEGEND

- = IRON ROD SET WITH RED CAP STAMPED COUNTY R/W P.S.M. #4149
- = IRON PIPE FOUND
- ⊙ = IRON ROD & CAP FOUND
- = CONCRETE MONUMENT FOUND

SARASOTA COUNTY PUBLIC WORKS BUSINESS CENTER CONSTRUCTION SERVICES - SURVEY OPERATIONS			
MAINTAINED RIGHT OF WAY MAP			
SHORE ROAD & SHORE TEE ROAD ALBEE ROAD TO MCHILL ROAD			
BY	T. OWEN	DATE	2-25-00
CHECKED	W.W.	DATE	5-19-00
COMPARED	K.C.W.	DATE	5-17-00
REF.	F.B. 345, PG. 1		
SCALE	1" = 40'	PROJECT NO.	8752
		SHEET	2 OF 2